

### ABBREVIATIONS & SYMBOLS

AC	AIR CONDITIONER
AFF	ABOVE FINISHED FLOOR
AFG	ABOVE FINISHED GRADE
AFR	ABOVE FINISHED ROOF
AFD	ADJUSTABLE FREQ. DRIVE
AHJ	AUTHORITY HAVING JURISDICTION
AHU	AIR HANDLING UNIT
BHP	BRAKE HORSE POWER
CD	CONDENSATE
CFM	CUBIC FEET PER MINUTE
CU	CONDENSING UNIT
DDC	DIRECT DIGITAL CONTROLS
DN	DOWN
EA	EXHAUST AIR
EAT	ENTERING AIR TEMPERATURE
ESP	EXTERNAL STATIC PRESSURE
EF	EXHAUST FAN
FLA	FULL LOAD AMPS
FPM	FEET PER MINUTE
GFI	GROUND FAULT CIRCUIT INTERRUPTER
GV	GRAVITY VENT ON ROOF
KW	KILOWATT
LAT	LEAVING AIR TEMPERATURE
MBH	THOUSANDS OF BTU'S PER HOUR
MCA	MINIMUM CIRCUIT AMPS
MOCP	MAXIMUM OVER CURRENT PROTECTION
NC	NORMALLY CLOSED
NO	NORMALLY OPEN
NTS	NOT TO SCALE
OA	OUTDOOR AIR
PSI	POUNDS PER SQUARE INCH
PSIG	PSI GAUGE
PVC	POLYVINYL CHLORIDE
RA	RETURN AIR
RTU	ROOF TOP UNIT
SA	SUPPLY AIR
TSP	TOTAL STATIC PRESSURE
UNO	UNLESS NOTED OTHERWISE
WP	WEATHER PROOF
ΔP	CHANGE IN PRESSURE
ΔT	CHANGE IN TEMPERATURE
SIM	SIMILAR
*CONNECT TO* SYMBOL	
*DEMOLISH TO* SYMBOL	
DEMOLISH EXISTING EQUIPMENT	
DIFFUSER TAG, NEW	
DIFFUSER TAG, EXISTING	
THERMOSTAT/TEMPERATURE SENSOR WITH CONTROL WIRING	

### DUCT SYMBOLS

SUPPLY AIR DUCTWORK DOWN	
SUPPLY AIR DUCTWORK UP	
OUTSIDE AIR DUCTWORK DOWN	
OUTSIDE AIR DUCTWORK UP	
FLEXIBLE CANVAS CONNECTION	
RETURN AIR DUCTWORK UP	
RETURN AIR DUCTWORK DOWN	
EXHAUST AIR DUCTWORK UP	
EXHAUST AIR DUCTWORK DOWN	
FIRE DAMPER EX - EXISTING	
MECHANICAL EQUIPMENT WITH MAINTENANCE CLEARANCE	
MANUAL BALANCE DAMPER	
MOTORIZED DAMPER, REFER TO SPECIFICATIONS FOR VOLTAGE REQUIREMENTS	
FLEXIBLE DUCTWORK	
SUPPLY AIR DIFFUSER	
RETURN AIR GRILLE	
EXHAUST AIR GRILLE	
DEMOLISH EXISTING DUCTWORK	

### CODE REFERENCES

FBC, BUILDING	FLORIDA BUILDING CODE, BUILDING, 2023 EIGHTH EDITION
FBC, EXISTING BUILDING	FLORIDA BUILDING CODE, EXISTING BUILDING, 2023 EIGHTH EDITION
FBC, MECHANICAL	FLORIDA BUILDING CODE, MECHANICAL, 2023 EIGHTH EDITION
FBC, EXISTING BUILDING	FLORIDA BUILDING CODE, 2023 EIGHTH EDITION
FBC, ENERGY	FLORIDA BUILDING CODE, 2023 EIGHTH EDITION
FFPC	FLORIDA FIRE PREVENTION CODE, 2023 EIGHTH EDITION
NFPA 13	STANDARD FOR THE INSTALLATION OF SPRINKLER SYSTEMS, 2019 EDITION
NFPA 51B	STANDARD FOR FIRE PREVENTION DURING WELDING, CUTTING, AND OTHER HOT WORK, 2019 EDITION
NFPA 70	NATIONAL ELECTRIC CODE, 2020 EDITION
NFPA 90A	STANDARD FOR THE INSTALLATION OF AIR CONDITIONING AND VENTILATING SYSTEMS, 2021 EDITION
NFPA 101	LIFE SAFETY CODE, 2021 EDITION
NFPA 101A	GUIDE ON ALTERNATIVE APPROACHES TO LIFE SAFETY, 2019 EDITION

### DESIGN CRITERIA

BUILDING TYPE	GROUP B, BUSINESS
CLIMATE ZONE	2A, LEON COUNTY, FLORIDA
OUTDOOR DESIGN CONDITIONS (SUMMER)	95°F DB, 78°F WB
OUTDOOR DESIGN CONDITIONS (WINTER)	25°F DB
INTERIOR DESIGN TEMPERATURES	72°F HEATING, 75°F COOLING
ENERGY COMPLIANCE METHOD	ENERGY TRADEOFF
SPACE USAGE	BUSINESS - OFFICE SPACES
COMMISSIONING	COMMISSIONING IS NOT REQUIRED PER EXCEPTION #1 OF C408.2 OF FLORIDA BUILDING CODE - ENERGY, 2023 (EIGHTH EDITION).
SCOPE OF WORK	THE SCOPE OF THIS PROJECT GENERALLY CONSISTS OF RENOVATIONS TO AN EXISTING OFFICE SPACE. THE INTENT IS THAT EXISTING AIR HANDLING EQUIPMENT BE REUSED AND AIR CONDITIONING SYSTEMS BE REBALANCED TO MEET EXISTING AND RECONFIGURED SPACES.

### PIPING SYMBOLS

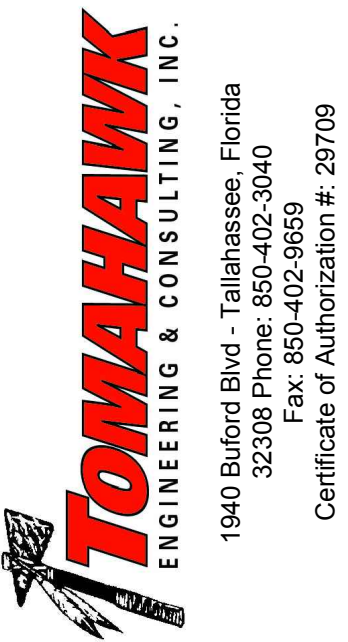
CHECK VALVE	
PIPING UP	
PIPING DOWN	
END CAP	
DIRECTION OF FLOW	
CONDENSATE & PUMPED CONDENSATE	

### HVAC SPECIFICATIONS

1	SUPPLY, RETURN AND OUTSIDE AIR DUCTWORK: ALL DUCTWORK SHALL BE CONSTRUCTED IN ACCORDANCE WITH THE LATEST EDITION OF SMACNA GUIDELINES AND SHALL BE CONSTRUCTED FROM G90 GALVANIZED SHEET STEEL. ALL SEAMS SHALL BE SEALED TO A MINIMUM OF 2" PRESSURE CLASS WITH WATER BASED MASTIC.
2	SUPPLY, RETURN, AND OUTSIDE AIR (INCLUDING FROM EXISTING SUPPLY DUCTS): INSULATE WITH MINIMUM, 2" THICK FIBERGLASS DUCT WRAP WITH A MINIMUM INSTALLED R-VALUE OF R-6. PER FBC-M. SEAL SEAMS IN DUCT WRAP WITH TAPE AND A MINIMUM OF (2) COATS OF INSULATION MASTIC, WHITE IN COLOR.
3	CONDENSATE PIPING: CONDENSATE PIPING LOCATED ON BUILDING ROOFS SHALL BE TYPE DWV COPPER WITH PRESSED JOINTS. SUPPORT PIPING AND ROUTE TO NEAREST ROOF DRAIN AS DETAILED. PIPING NEED NOT BE INSULATED.
4	FLEXIBLE DUCTWORK SHALL BE TRI-LAMINATE AROUND A HELICAL COIL AND INSULATED WITH A MINIMUM OF 2" FIBERGLASS DUCT WITH A FSK VAPOR BARRIER. FLEXIBLE DUCTS SHALL BE SECURED IN PLACED TO DUCT TAKEOFFS AND REGISTERS WITH NYLON STRAP, MINIMUM, (2) SCREWS AND DUCT MASTIC. TAPE SEAMS OF FLEXIBLE DUCT INSULATION TO MATED DUCT INSULATION AND PROVIDE WITH A MINIMUM OF (2) COATS OF WHITE INSULATION MASTIC.
5	FLEXIBLE DUCT CONNECTORS: FLEXIBLE CONNECTORS SHALL BE LISTED FOR USE. EXTERIOR DUCT CONNECTORS SHALL BE CHEMICAL, UV, AND WEATHER RESISTANT. PROVIDE HEAVY DUTY CONNECTIONS WHERE USED FOR CONNECTIONS TO EXHAUST FANS.
6	AIR CONDITIONING SYSTEMS SHALL BE TESTED AND BALANCED UPON INSTALLATION COMPLETION BY A NEBB CERTIFIED TEST AND BALANCE AGENT OR PROFESSIONAL ENGINEER OFFERING TEST AND BALANCE SERVICES AS ALLOWED BY THE FLORIDA BUILDING CODE, ENERGY. AGENT SHALL PROVIDE A SIGNED AND SEALED TEST AND BALANCE REPORT TO THE ENGINEER OF RECORD UPON COMPLETION OF TAB ACTIVITIES.
7	DIFFUSERS AND GRILLES SHALL BE FROM A SINGLE MANUFACTURER. DIFFUSERS AND GRILLES SHALL BE ALL ALUMINUM CONSTRUCTION AND BE WHITE IN COLOR, UNLESS NOTED OTHERWISE.
8	ALL ROOFING WORK SHALL BE DONE BY A LICENSED ROOFING CONTRACTOR, NO EXCEPTIONS.
9	FIRE DAMPERS SHALL BE OF THE DYNAMIC TYPE WITH BLADES OUTSIDE THE AIRSTREAM. PROVIDE WITH 165°F BURN THRU TYPE LINKAGE CONNECTIONS. REFRIGERANT PIPING SHALL BE TYPE ACR WITH SEALED ENDS. PROVIDE SIZING IN ACCORDANCE WITH MANUFACTURER'S WRITTEN INSTALLATION INSTRUCTIONS. SUCTION LINES SHALL BE INSULATED WITH 1" ELASTOMERIC INSULATION. PROVIDE A MINIMUM OF (2) COATS OF WHITE, UV MASTIC OVER TOP OF INSULATION LOCATED OUTDOORS.
10	

### GENERAL HVAC NOTES

1	TOMAHAWK ENGINEERING AND CONSULTING, INC. SHALL NOT BE HELD RESPONSIBLE FOR ANY MISUSE AND/OR MISREPRESENTATION OF THIS SET OF DOCUMENTS.
2	THE CONTRACTOR ASSUMES RESPONSIBILITY FOR USE OF THE CONTRACT DOCUMENTS. THE CONTRACTOR SHALL MAKE HIMSELF AWARE OF PROJECT CONDITIONS AND OWNER REQUIREMENTS PRIOR TO PROCUREMENT OF EQUIPMENT AND SERVICES. CHANGES IN PROJECT COST WILL NOT BE GRANTED DUE TO FIELD CONFLICTS AND/OR PROJECT CONDITIONS.
3	THIS SET OF DRAWINGS AND SPECIFICATIONS SHALL NOT BE CONSIDERED A SET OF CONSTRUCTION DOCUMENTS UNLESS A SIGNATURE AND DATE ARE AFFIXED TO THE DRAWINGS AND SPECIFICATIONS BY THE ENGINEER IN RESPONSIBLE CHARGE FOR THE GIVEN DISCIPLINE.
4	CONFLICTS BETWEEN THIS SET OF DRAWINGS AND THE CONTRACT SPECIFICATIONS SHALL BE RESOLVED BY THE ENGINEER OF RECORD. THE CONTRACTOR DOES NOT HAVE THE AUTHORITY TO INTERPRET CONFLICTS AND RESOLVE ISSUES WITHOUT WRITTEN DIRECTION FROM THE ENGINEER OF RECORD.
5	ANY CONFLICTS IN THE FIELD OR WITHIN THESE DOCUMENTS SHALL BE RECORDED AND PROVIDED TO THE ENGINEER OF RECORD ON THE CONTRACTOR'S STANDARD LETTERHEAD. WRITTEN DIRECTION RESOLVING CONFLICT WILL BE ISSUED BY THE ENGINEER OF RECORD.
6	WHERE THE CONTRACTOR DEVIATES FROM THIS SET OF CONSTRUCTION DOCUMENTS AND RESUBMISSION OF REVISED DRAWINGS IS REQUIRED BY THE PERMITTING OFFICE/OFFICIAL, A MINIMUM CHARGE OF \$750.00 PER AFFECTED DRAWING SHEET WILL BE BILLED TO THE CONTRACTOR. THE REVISED DRAWINGS WILL NOT BE PROVIDED AND/OR SUBMITTED TO THE PERMIT OFFICE UNTIL A PURCHASE ORDER OR SIGNED AGREEMENT IS ISSUED BY THE CONTRACTOR TO THE DESIGN PROFESSIONAL FOR WORK REQUIRED. THIS SHALL NOT APPLY TO UNFORESEEN CONDITIONS OR CHANGES REQUIRED FOR THE PROJECT THAT ARE NOT INITIATED BY THE CONTRACTOR.
7	DRAWINGS ARE SCHEMATIC IN NATURE. THE CONTRACTOR SHALL COORDINATE WITH OTHER TRADES AND EXISTING EQUIPMENT (WHERE APPLICABLE) TO ENSURE EQUIPMENT FURNISHED WILL WORK FOR SPACES PROVIDED. FINAL DIMENSIONS OF DUCTWORK AND PIPING SHALL BE COORDINATED IN FIELD. THE CONTRACTOR ASSUMES ALL RESPONSIBILITY FOR PROVIDING OFFSETS AND TRANSITIONS IN DUCTWORK AND PIPING TO FIT IN SPACES PROVIDED AND THESE ADDITIONAL OFFSETS AND TRANSITIONS SHALL BE PROVIDED AT NO ADDITIONAL COST TO THE OWNER.
8	DUCTWORK SHALL BE CONSTRUCTED IN ACCORDANCE WITH THE LATEST EDITION OF SMACNA GUIDELINES AT TIME OF PROJECT PERMIT.
9	THERMOSTATS, HUMIDISTATS, TEMPERATURE SENSORS, HUMIDITY SENSORS, AND/OR OTHER DEVICES REQUIRING OCCUPANT ADJUSTMENT BUT LOCATED ON WALL SHALL BE MOUNTED 48" AFF, UNLESS NOTED OTHERWISE.
10	WHERE APPLICABLE AND AVAILABLE, ACTUAL EQUIPMENT DRAWINGS ARE USED FOR SYMBOLS ON PLAN VIEWS AND IN DETAILS. HOWEVER, SIMPLE BLOCK DIAGRAMS WITH ESTIMATED DIMENSIONS ARE ALSO USED FOR PLAN VIEWS. WHERE EQUIPMENT OR DEVICES ARE NOT LABELED, INDUSTRY STANDARD TERMINOLOGY AND SYMBOLOLOGY SHALL APPLY.
11	THESE GENERAL NOTES WORK IN CONJUNCTION WITH NOTES SHOWN ON PLAN VIEWS. THESE NOTES DO NOT SUPERCEDE NOTES SHOWN ON PLAN VIEW DRAWINGS. CONVERSELY, NOTES SHOWN ON PLAN VIEW DRAWINGS DO NOT SUPERCEDE THESE GENERAL NOTES.
12	REFER TO EQUIPMENT SCHEDULES FOR AIR AND WATER PRESSURE DROPS ASSOCIATED WITH COOLING AND HEATING COILS.
13	PROVIDE ACCESS PANELS IN DUCTWORK AND/OR BUILDING CONSTRUCTION WHERE REQUIRED FOR EQUIPMENT ACCESS AND SERVICE. PANELS SHALL BE SIZED TO SUIT EQUIPMENT SERVED. WHERE PANELS WILL BE LOCATED IN FIRE RATED WALLS AND/OR PARTITIONS, THE ACCESS PANEL SHALL MEET THE RATING OF THE WALL. REFER TO ARCHITECTURAL DRAWINGS FOR RATINGS OF WALLS AND PARTITIONS.
14	UNLESS NOTED OTHERWISE, DUCTWORK, PIPING, VALVES, DAMPERS, AND ALL ASSOCIATED ANCILLARY HVAC DEVICES SHALL BE CONSTRUCTED IN ACCORDANCE WITH MECHANICAL SPECIFICATIONS. ALL EQUIPMENT INSTALLED AS PART OF THIS PROJECT SHALL BE NEW, UNLESS NOTED OTHERWISE, NO EXCEPTIONS.
15	PAINT DUCTWORK AND DAMPERS VISIBLE THRU REGISTERS FLAT BLACK PRIOR TO OWNER OCCUPANCY.
16	HVAC EQUIPMENT PROVIDED FROM THIRD PARTY MANUFACTURER SHALL BE INSTALLED IN ACCORDANCE WITH THE MANUFACTURER'S WRITTEN INSTALLATION INSTRUCTIONS. WHERE CONFLICTS BETWEEN CONTRACT DOCUMENTS AND MANUFACTURER'S INSTRUCTION ARISE, THE MANUFACTURER'S INSTALLATION INSTRUCTIONS SHALL PREVAIL.
17	THE CONTRACTOR SHALL MAKE HIS OR HERSELF AWARE OF THE OWNER'S SCHEDULE AND BE PREPARED TO WORK AT NIGHT OR ON WEEKENDS TO COMPLETE WORK SHOWN IN THESE DOCUMENTS. INTERRUPTIONS TO OWNER'S NORMAL WORK SCHEDULE SHALL NOT BE MADE WITHOUT WRITTEN INSTRUCTION TO DO SO FROM OWNER'S REPRESENTATIVE.
18	FOR EQUIPMENT DEMOLISHED UNDER THIS CONTRACT, THE CONTRACTOR SHALL ALLOW THE OWNER FIRST REFUSAL OF DEMOLISHED EQUIPMENT. IF EQUIPMENT IS REFUSED, THE CONTRACTOR SHALL DISPOSE OF DEMOLISHED EQUIPMENT IN ACCORDANCE WITH THE AUTHORITY HAVING JURISDICTION. IN ADDITION, FOR EQUIPMENT INDICATED TO BE DEMOLISHED, THE CONTRACTOR SHALL ASSUME THAT THIS ALSO REQUIRES DEMOLITION OF ALL ASSOCIATED APPURTENANCES INCLUDING ELECTRICAL CONNECTIONS, CONTROLS CONNECTIONS, ETC.
19	CONTROLS COMPONENTS INDICATED TO BE DEMOLISHED SHALL ALSO INCLUDE CONTROL WIRING AND CONDUITS, REGARDLESS OF VOLTAGE. WHERE CONTROL WIRING IS 120V AND ABOVE, A LICENSED ELECTRICAL CONTRACTOR SHALL BE PROCURED BY THE CONTROLS VENDOR TO PERFORM WORK.
20	THE CONTROLS VENDOR IS RESPONSIBLE FOR PROVIDING AND INSTALLING ALL CONTROL WIRING AND CONDUIT ASSOCIATED WITH THIS PROJECT, REGARDLESS OF VOLTAGE. WHERE CONTROL VOLTAGE IS 110V AND ABOVE, THE CONTROLS VENDOR SHALL PROCURE THE SERVICES OF A FLORIDA LICENSED ELECTRICAL CONTRACTOR TO PROVIDE AND INSTALL WIRING AND CONDUITS IN ACCORDANCE WITH NEC AND THE LOCAL AUTHORITY HAVING JURISDICTION.
21	WHERE THERE ARE CONFLICTS BETWEEN LIGHT SWITCHES AND THERMOSTAT/HUMIDISTAT LOCATIONS, THE LIGHT SWITCHES SHALL PREVAIL. MOUNT THERMOSTAT/HUMIDISTAT ADJACENT TO LIGHT SWITCHES.
22	AS REQUIRED BY BUILDING CONSTRUCTION, THE CONTRACTOR SHALL PROVIDE TRANSITIONS AND EQUIVALENT SQUARE DUCT SIZES NEEDED TO FIT THRU JOISTS AND/OR WALL 2x4 SPACING WHERE ROUND IS SHOWN ON PLANS. THE CONTRACTOR SHALL PROVIDE THESE TRANSITIONS AND SQUARE DUCTS AT NO ADDITIONAL COST TO THE OWNER. COORDINATE WITH THE GC IN FIELD FOR JOIST AND WALL 2x4 REQUIREMENTS.
23	WHERE REQUIRED BY BUILDING CONSTRUCTION AND HEIGHT TO EQUIPMENT SERVED, THE CONTRACTOR SHALL PROVIDE HOISTING MECHANISMS AS WELL AS SCAFFOLDING WHERE REQUIRED TO INSTALL EQUIPMENT SHOWN WITHIN THESE CONTRACT DOCUMENTS. EQUIPMENT USED FOR THE INSTALLATION OF EQUIPMENT SHALL MEET ALL OSHA REQUIREMENTS.
24	PROVIDE MANUAL BALANCE DAMPERS FOR SUPPLY, RETURN, AND EXHAUST TAKE-OFFS TO REGISTERS WHETHER INDICATED OR NOT. WHERE DAMPERS WILL BE LOCATED ABOVE INACCESSIBLE CEILINGS, PROVIDE OPPOSED BLADE MANUAL BALANCE DAMPERS FROM REGISTER MANUFACTURER.



1940 Buford Blvd - Tallahassee, Florida  
32308 Phone: 850-402-3040  
Fax: 850-402-9609  
Certificate of Authorization #: 29709

NOT FOR CONSTRUCTION

Hoy + Stark Architects  
Tallahassee Memorial Healthcare

Tallahassee Memorial Healthcare  
Outpatient Rehab Relocation  
1607 Saint James Court  
Tallahassee, FL 32308

This drawing is being released for the purpose of:  
100% CONTRACT DOCUMENTS

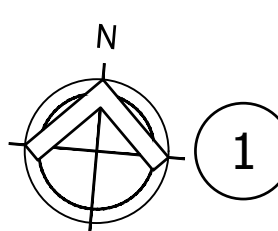
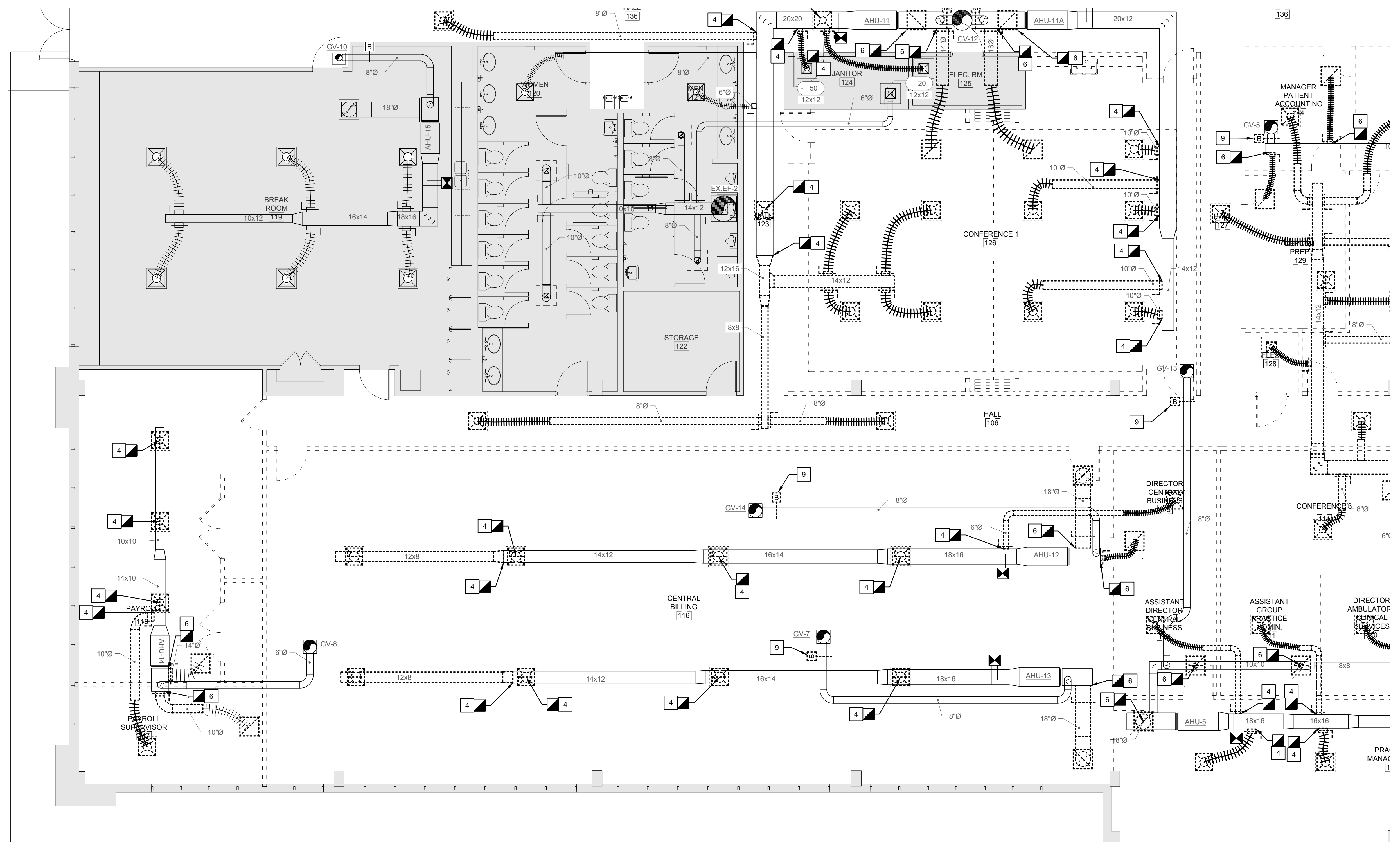
REV #	DATE	PHASE / REVISION	CHECK	DATE
04/03/26		100% OWNER REVIEW	DMM	
04/24/26		100% CONTRACT DOCUMENTS	DMM	
SHEET NAME: LEGEND & NOTES - MECHANICAL				
SHEET NUMBER: M-001				

TOMAHAWK ENGINEERING PROJECT # 25029



- SHEET DEMOLITION KEY NOTES:**
- 1 REMOVE CLEAN AND STORE EXISTING DUCT DETECTOR. DEMOLISH EXISTING WIRING AS REQUIRED TO RELOCATE DUCT DETECTOR. REFER TO RENOVATION PLANS.
  - 2 DEMOLISH EXISTING SUPPLY AIR DIFFUSER AND DUCTWORK BACK TO POINT INDICATED. CAP AND SEAL AIR AND VAPOR TIGHT.
  - 3 DEMOLISH EXISTING RETURN AIR GRILLE AND DUCTWORK BACK TO POINT INDICATED. CAP AND SEAL AIR AND VAPOR TIGHT.
  - 4 DEMOLISH EXISTING SUPPLY AIR DUCTWORK BACK TO POINT INDICATED. PREPARE EXISTING DUCTWORK FOR NEW CONNECTIONS.
  - 5 DEMOLISH EXISTING SUPPLY AIR DUCTWORK BACK TO POINT AHU AS INDICATED.
  - 6 DEMOLISH EXISTING RETURN AIR DUCTWORK BACK TO POINT INDICATED. PREPARE EXISTING DUCTWORK FOR NEW CONNECTIONS.
  - 7 DEMOLISH EXISTING EXHAUST AIR FAN, DUCTWORK AND ASSOCIATED APPURTENANCES BACK TO POINT INDICATED. CAP AND SEAL AIR AND WEATHER TIGHT.
  - 8 CONTRACTOR TO ENLARGE EXISTING OPENING IN EXTERIOR WALL AS REQUIRED TO INSTALL NEW EXHAUST FAN AND ROUTE DUCTWORK. REFER TO RENOVATION DRAWINGS FOR FURTHER INFORMATION.
  - 9 DEMOLISH EXISTING BACKDRAFT DAMPER AND SEAL DUCTWORK. INSULATE PER SPECIFICATIONS. PROVIDE MOTORIZED DAMPER AND MANUAL BALANCE DAMPER WHERE INDICATED ON RENOVATION DRAWINGS.
  - 10 DEMOLISH EXISTING MOTORIZED DAMPER AND CO2 MONITOR. REPLACE WITH NEW AS INDICATED ON RENOVATION DRAWINGS. FIELD VERIFY EXISTING DUCT SIZES.

- SHEET NOTES:**
1. ALL EXISTING SUPPLY AIR, RETURN AIR, AND OUTSIDE AIR DUCTWORK, NOT INDICATED TO BE DEMOLISHED, SHALL BE CLEANED BY A STATE LICENSED DUCT CLEANER. OPENINGS SHALL BE MADE AS REQUIRED TO CLEAN DUCTS. PATCH OPENINGS AND INSULATE ONCE COMPLETED.
  2. ALL EXISTING AIR HANDLING UNITS SHALL BE CLEANED AND DISINFECTED BY A LICENSED DUCT CLEANER. CLEANING SHALL INCLUDE INTERIOR SURFACES OF AIR HANDLING UNIT, COILS, DRAIN PANS, FANS, FAN BLADES, AND ASSOCIATED COMPONENTS.
  3. WHERE DUCT MOUNTED SMOKE DETECTORS HAVE BEEN PROVIDED FOR EXISTING EQUIPMENT BUT WILL NOT BE REMOVED, PROTECT DURING DEMOLITION AND CONSTRUCTION PROCESS. ENSURE PROPER OPERATION PRIOR TO OWNERTENANT OCCUPANCY.



**1 Partial Floor Plan - Demolition - Ductwork**  
SCALE: 3/16" = 1'-0"

This drawing is being released for the purpose of:  
**100% CONTRACT DOCUMENTS**

REV #	DATE	PHASE / REVISION	DWN	CHECK
04/03/26		100% OWNER REVIEW	BSS	WHT
04/24/26		100% CONTRACT DOCUMENTS	BSS	WHT

SHEET NAME:  
PARTIAL FLOOR PLAN - DEMOLITION - DUCTWORK

SHEET NUMBER:  
**MD-101**

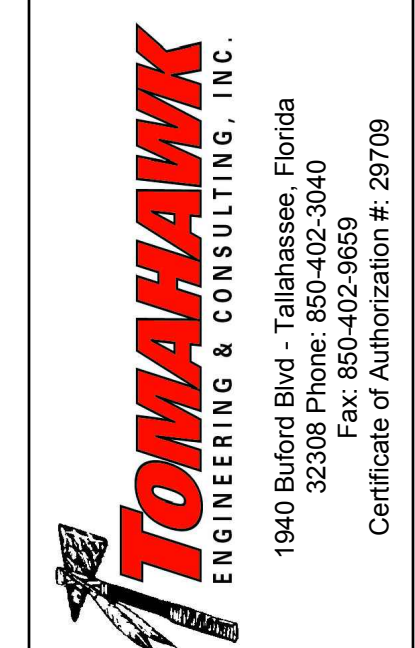
TOMAHAWK ENGINEERING PROJECT # 25029

**SHEET DEMOLITION KEY NOTES:**

1	REMOVE CLEAN AND STORE EXISTING DUCT DETECTOR. DEMOLISH EXISTING WIRING AS REQUIRED TO RELOCATE DUCT DETECTOR. REFER TO RENOVATION PLANS.
2	DEMOLISH EXISTING SUPPLY AIR DIFFUSER AND DUCTWORK BACK TO POINT INDICATED. CAP AND SEAL AIR AND VAPOR TIGHT.
3	DEMOLISH EXISTING RETURN AIR GRILLE AND DUCTWORK BACK TO POINT INDICATED. CAP AND SEAL AIR AND VAPOR TIGHT.
4	DEMOLISH EXISTING SUPPLY AIR DUCTWORK BACK TO POINT INDICATED. PREPARE EXISTING DUCTWORK FOR NEW CONNECTIONS.
5	DEMOLISH EXISTING SUPPLY AIR DUCTWORK BACK TO POINT AHU AS INDICATED.
6	DEMOLISH EXISTING RETURN AIR DUCTWORK BACK TO POINT INDICATED. PREPARE EXISTING DUCTWORK FOR NEW CONNECTIONS.
7	DEMOLISH EXISTING EXHAUST AIR FAN, DUCTWORK AND ASSOCIATED APPURTENANCES BACK TO POINT INDICATED. CAP AND SEAL AIR AND WEATHER TIGHT.
8	CONTRACTOR TO ENLARGE EXISTING OPENING IN EXTERIOR WALL AS REQUIRED TO INSTALL NEW EXHAUST FAN AND ROUTE DUCTWORK. REFER TO RENOVATION DRAWINGS FOR FURTHER INFORMATION.
9	DEMOLISH EXISTING BACKDRAFT DAMPER AND SEAL DUCTWORK. INSULATE PER SPECIFICATIONS. PROVIDE MOTORIZED DAMPER AND MANUAL BALANCE DAMPER WHERE INDICATED ON RENOVATION DRAWINGS.
10	DEMOLISH EXISTING MOTORIZED DAMPER AND CO2 MONITOR. REPLACE WITH NEW AS INDICATED ON RENOVATION DRAWINGS. FIELD VERIFY EXISTING DUCT SIZES.

**SHEET NOTES:**

- ALL EXISTING SUPPLY AIR, RETURN AIR, AND OUTSIDE AIR DUCTWORK, NOT INDICATED TO BE DEMOLISHED, SHALL BE CLEANED BY A STATE LICENSED DUCT CLEANER. OPENINGS SHALL BE MADE AS REQUIRED TO CLEAN DUCTS. PATCH OPENINGS AND INSULATE ONCE COMPLETED.
- ALL EXISTING AIR HANDLING UNITS SHALL BE CLEANED AND DISINFECTED BY A LICENSED DUCT CLEANER. CLEANING SHALL INCLUDE INTERIOR SURFACES OF AIR HANDLING UNIT, COILS, DRAIN PANS, FANS, FAN BLADES, AND ASSOCIATED COMPONENTS.
- WHERE DUCT MOUNTED SMOKE DETECTORS HAVE BEEN PROVIDED FOR EXISTING EQUIPMENT BUT WILL NOT BE REMOVED, PROTECT DURING DEMOLITION AND CONSTRUCTION PROCESS. ENSURE PROPER OPERATION PRIOR TO OWNER/TENANT OCCUPANCY.



NOT FOR CONSTRUCTION

FL Seal: RICHARD LINDBURG  
PE# 62829  
WESLEY THIGPEN, JR.  
PE# 65705

**Hoy + Stark**  
Architects  
Tallahassee Memorial  
HealthCare

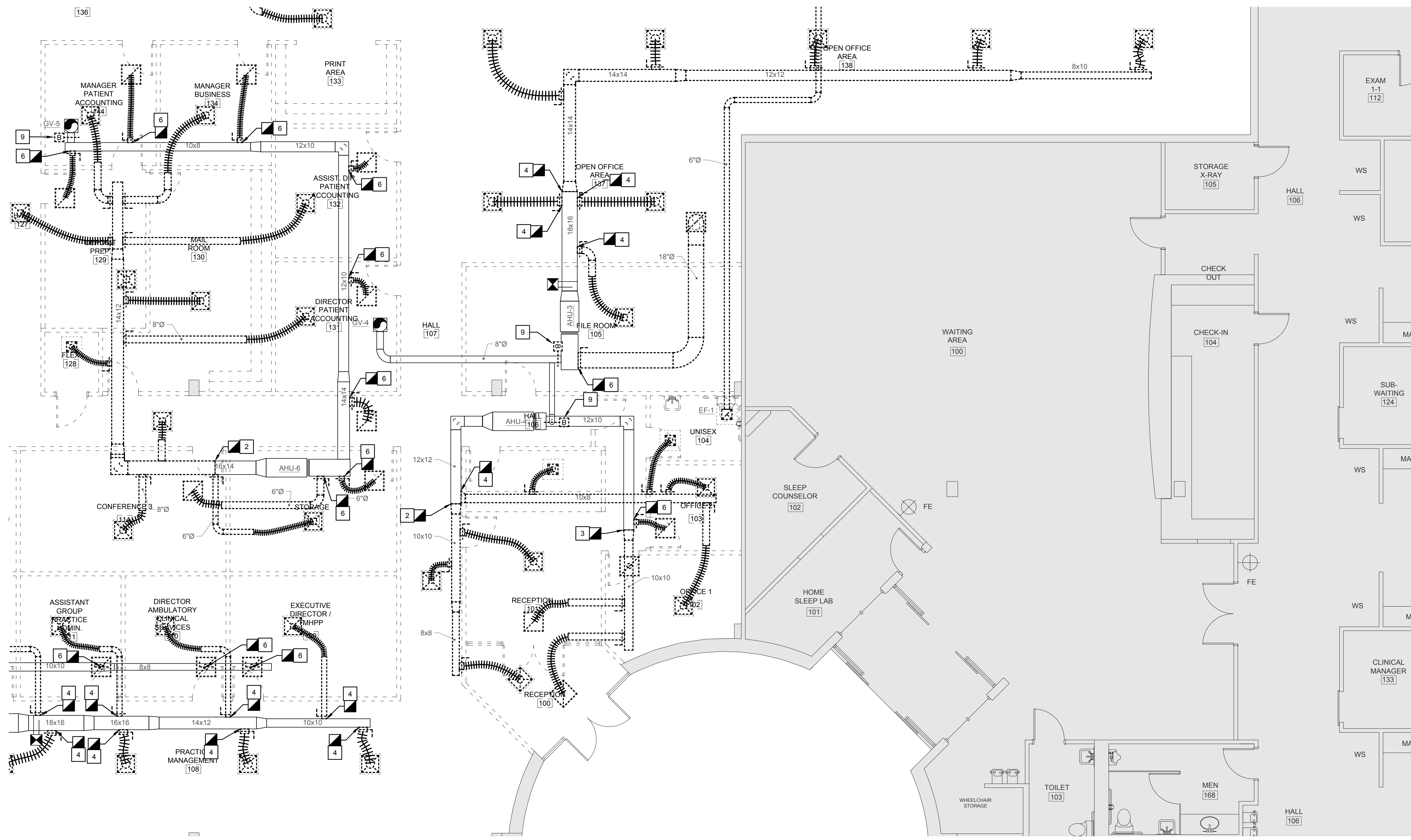
**Tallahassee Memorial Healthcare**  
Outpatient Rehab Relocation  
1607 Saint James Court  
Tallahassee, FL 32308

This drawing is being released for the purpose of:  
**100% CONTRACT DOCUMENTS**

REV #	DATE	PHASE / REVISION	DWN	CHECK
04/03/26	100% OWNER REVIEW	BSS	WHT	
04/24/26	100% CONTRACT DOCUMENTS	BSS	WHT	

SHEET NAME:  
PARTIAL FLOOR PLAN - DEMOLITION - DUCTWORK  
SHEET NUMBER:  
**MD-102**

TOMAHAWK ENGINEERING PROJECT # 25029



**1** Partial Floor Plan - Demolition - Ductwork  
SCALE: 3/16" = 1'-0"

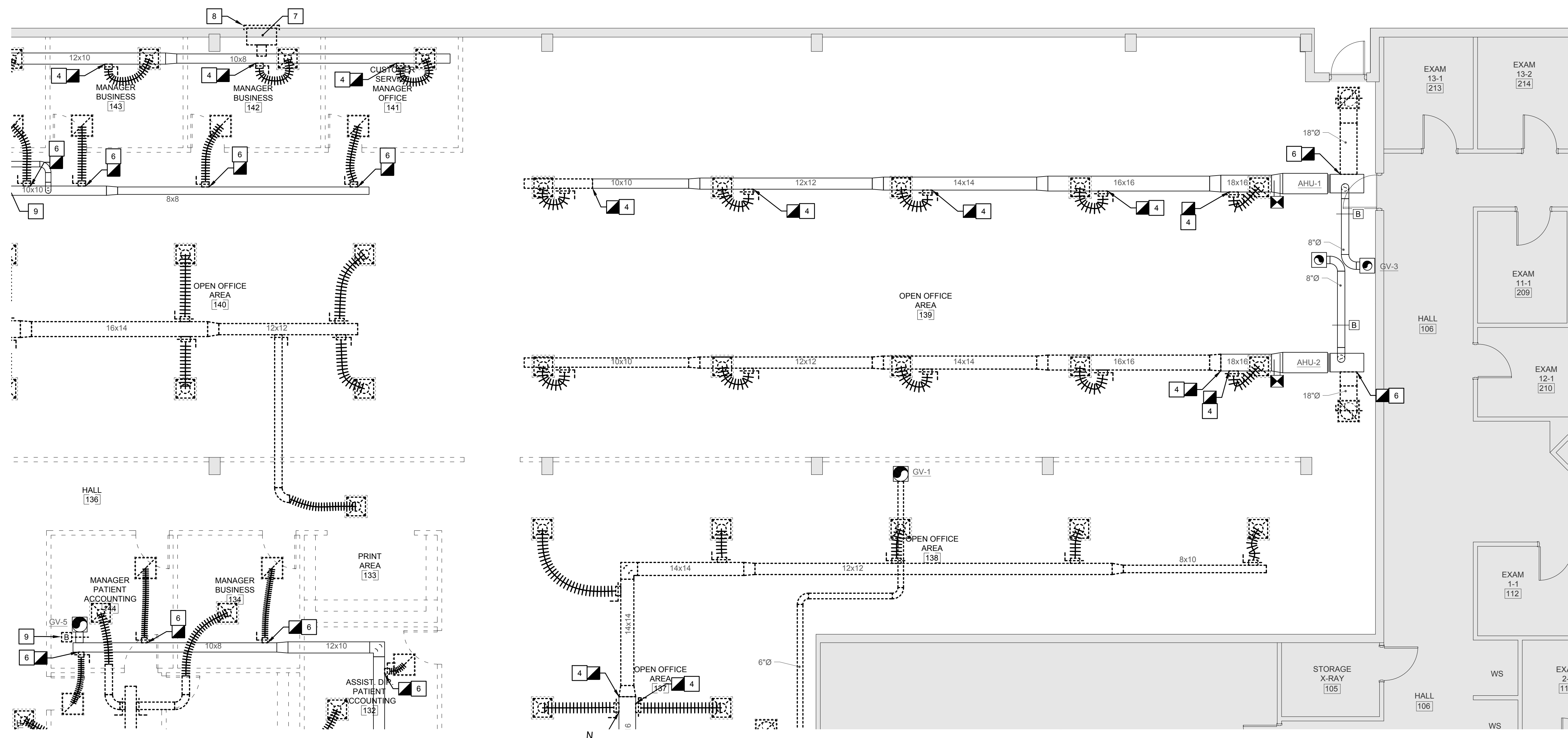


**SHEET DEMOLITION KEY NOTES:**

1	REMOVE CLEAN AND STORE EXISTING DUCT DETECTOR. DEMOLISH EXISTING WIRING AS REQUIRED TO RELOCATE DUCT DETECTOR. REFER TO RENOVATION PLANS.
2	DEMOLISH EXISTING SUPPLY AIR DIFFUSER AND DUCTWORK BACK TO POINT INDICATED. CAP AND SEAL AIR AND VAPOR TIGHT.
3	DEMOLISH EXISTING RETURN AIR GRILLE AND DUCTWORK BACK TO POINT INDICATED. CAP AND SEAL AIR AND VAPOR TIGHT.
4	DEMOLISH EXISTING SUPPLY AIR DUCTWORK BACK TO POINT INDICATED. PREPARE EXISTING DUCTWORK FOR NEW CONNECTIONS.
5	DEMOLISH EXISTING SUPPLY AIR DUCTWORK BACK TO POINT AHU AS INDICATED.
6	DEMOLISH EXISTING RETURN AIR DUCTWORK BACK TO POINT INDICATED. PREPARE EXISTING DUCTWORK FOR NEW CONNECTIONS.
7	DEMOLISH EXISTING EXHAUST AIR FAN, DUCTWORK AND ASSOCIATED APPURTENANCES BACK TO POINT INDICATED. CAP AND SEAL AIR AND WEATHER TIGHT.
8	CONTRACTOR TO ENLARGE EXISTING OPENING IN EXTERIOR WALL AS REQUIRED TO INSTALL NEW EXHAUST FAN AND ROUTE DUCTWORK. REFER TO RENOVATION DRAWINGS FOR FURTHER INFORMATION.
9	DEMOLISH EXISTING BACKDRAFT DAMPER AND SEAL DUCTWORK. INSULATE PER SPECIFICATIONS. PROVIDE MOTORIZED DAMPER AND MANUAL BALANCE DAMPER WHERE INDICATED ON RENOVATION DRAWINGS.
10	DEMOLISH EXISTING MOTORIZED DAMPER AND CO2 MONITOR. REPLACE WITH NEW AS INDICATED ON RENOVATION DRAWINGS. FIELD VERIFY EXISTING DUCT SIZES.

**SHEET NOTES:**

- ALL EXISTING SUPPLY AIR, RETURN AIR, AND OUTSIDE AIR DUCTWORK, NOT INDICATED TO BE DEMOLISHED, SHALL BE CLEANED BY A STATE LICENSED DUCT CLEANER. OPENINGS SHALL BE MADE AS REQUIRED TO CLEAN DUCTS. PATCH OPENINGS AND INSULATE ONCE COMPLETED.
- ALL EXISTING AIR HANDLING UNITS SHALL BE CLEANED AND DISINFECTED BY A LICENSED DUCT CLEANER. CLEANING SHALL INCLUDE INTERIOR SURFACES OF AIR HANDLING UNIT, COILS, DRAIN PANS, FANS, FAN BLADES, AND ASSOCIATED COMPONENTS.
- WHERE DUCT MOUNTED SMOKE DETECTORS HAVE BEEN PROVIDED FOR EXISTING EQUIPMENT BUT WILL NOT BE REMOVED, PROTECT DURING DEMOLITION AND CONSTRUCTION PROCESS. ENSURE PROPER OPERATION PRIOR TO OWNER/TENANT OCCUPANCY.



1 Partial Floor Plan - Demolition - Ductwork  
SCALE: 3/16" = 1'-0"

NOT FOR CONSTRUCTION

FL Seal: RICHARD LINDBURG  
PE# 62829  
WESLEY THIGPEN, JR.  
PE# 65705

**Hoy + Stark**  
Architects  
Tallahassee Memorial  
HealthCare

**Tallahassee Memorial Healthcare**  
Outpatient Rehab Relocation  
1607 Saint James Court  
Tallahassee, FL 32308

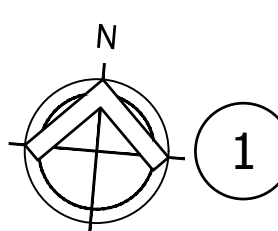
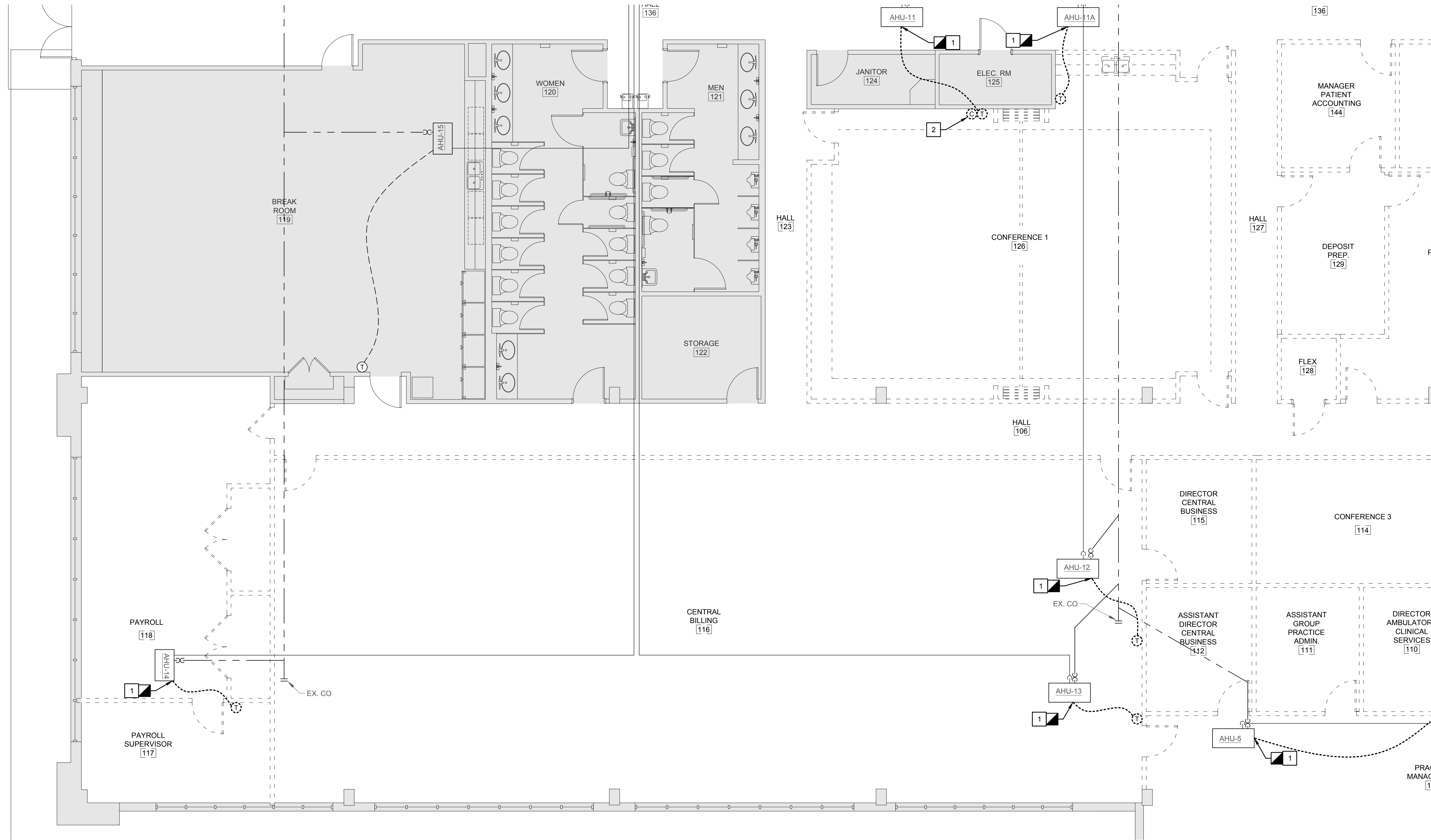
This drawing is being released for the purpose of:  
**100% CONTRACT DOCUMENTS**

REV #	DATE	PHASE / REVISION	DWN	CHECK
04/03/26	100% OWNER REVIEW	BSS	WHT	
04/24/26	100% CONTRACT DOCUMENTS	BSS	WHT	

SHEET NAME:  
PARTIAL FLOOR PLAN - DEMOLITION - DUCTWORK

SHEET NUMBER:  
MD-104

SHEET DEMOLITION KEY NOTES:	
1	DEMOLISH EXISTING THERMOSTAT, CONTROL WIRING, AND ALL ASSOCIATED APPURTENANCES. PROVIDE WITH NEW AS INDICATED ON AHU SCHEDULE. REPAIR, PATCH, AND PAINT EXISTING WALL SURFACES TO MATCH NEW. REFER TO ARCHITECTURAL DRAWINGS FOR FURTHER INFORMATION.
2	DEMOLISH EXISTING CARBON DIOXIDE DETECTOR AND ALL ASSOCIATED APPURTENANCES.



1 Partial Floor Plan - Demolition - Piping  
SCALE: 3/16" = 1'-0"

NOT FOR  
CONSTRUCTION

FL Seal:  
RICHARD LINDBURG  
PE# 62829  
WESLEY THIGPEN, JR.  
PE# 65705

This drawing is being released for the purpose of:  
**100% CONTRACT DOCUMENTS**

REV #	DATE	PHASE / REVISION	DWN	CHECK
04/03/26	100% OWNER REVIEW	BSS	WHT	
04/24/26	100% CONTRACT DOCUMENTS	BSS	WHT	

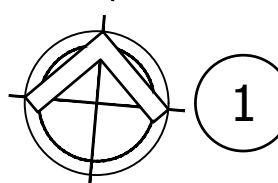
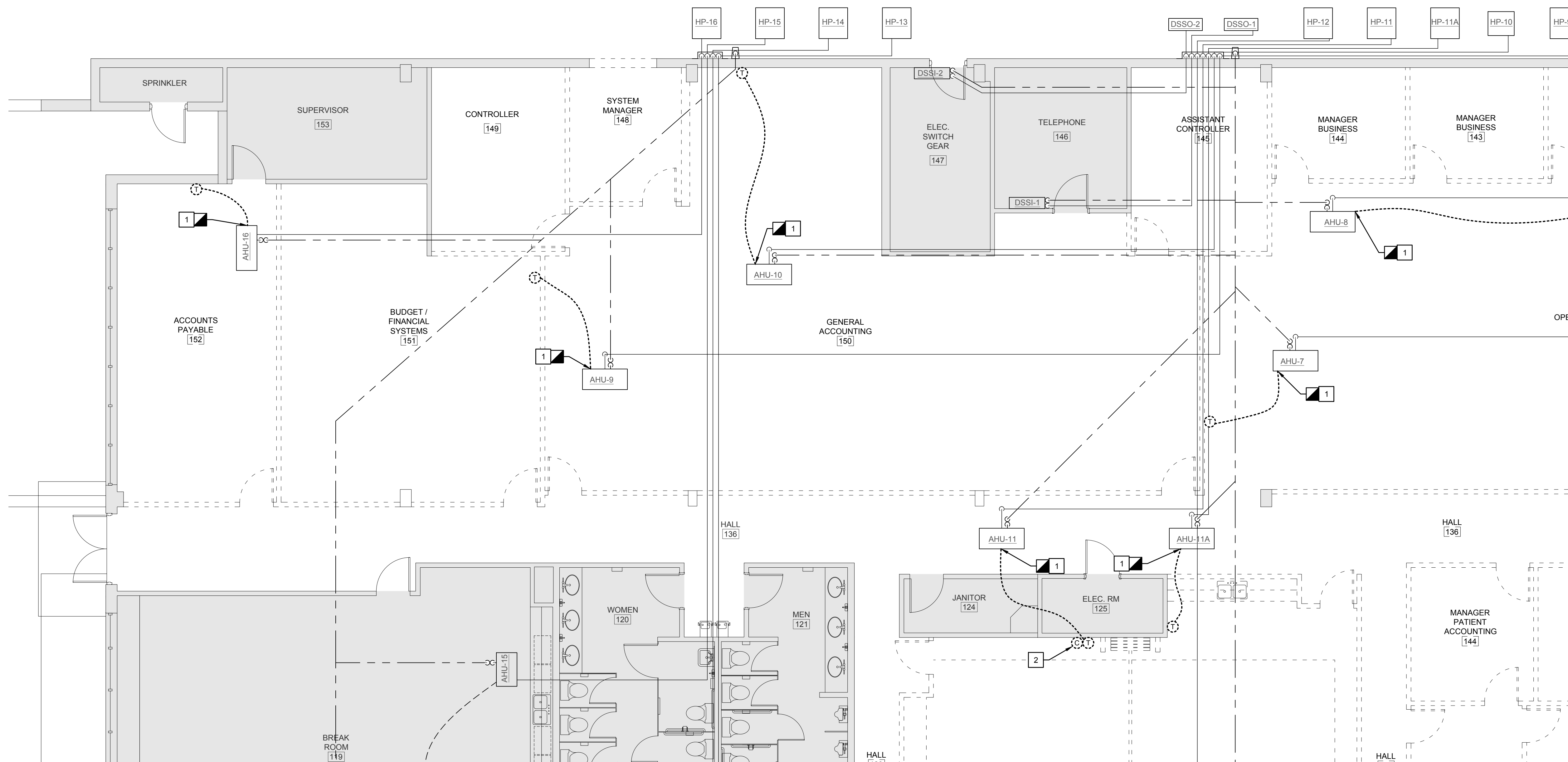
SHEET NAME:  
PARTIAL FLOOR PLAN -  
DEMOLITION - PIPING

SHEET NUMBER:  
**MD-201**

TOMAHAWK ENGINEERING PROJECT # 25029



SHEET DEMOLITION KEY NOTES:	
1	DEMOLISH EXISTING THERMOSTAT, CONTROL WIRING, AND ALL ASSOCIATED APPURTENANCES. PROVIDE WITH NEW AS INDICATED ON AHU SCHEDULE. REPAIR, PATCH, AND PAINT EXISTING WALL SURFACES TO MATCH NEW. REFER TO ARCHITECTURAL DRAWINGS FOR FURTHER INFORMATION.
2	DEMOLISH EXISTING CARBON DIOXIDE DETECTOR AND ALL ASSOCIATED APPURTENANCES.



1 Partial Floor Plan - Demolition - Piping  
SCALE: 3/16" = 1'-0"

NOT FOR  
CONSTRUCTION

REGISTERED PROFESSIONAL ELECTRICAL ENGINEER  
RICHARD LINDBURG  
PE# 62829  
WESLEY THIGPEN, JR.  
PE# 65705

**Hoy + Stark**  
Architects  
Tallahassee Memorial  
HealthCare

**Tallahassee Memorial Healthcare**  
Outpatient Rehab Relocation  
1607 Saint James Court  
Tallahassee, FL 32308

This drawing is being released for the purpose of:  
**100% CONTRACT DOCUMENTS**

REV #	DATE	PHASE / REVISION	DWN	CHECK
04/03/26		100% OWNER REVIEW	BSS	WHT
04/24/26		100% CONTRACT DOCUMENTS	BSS	WHT

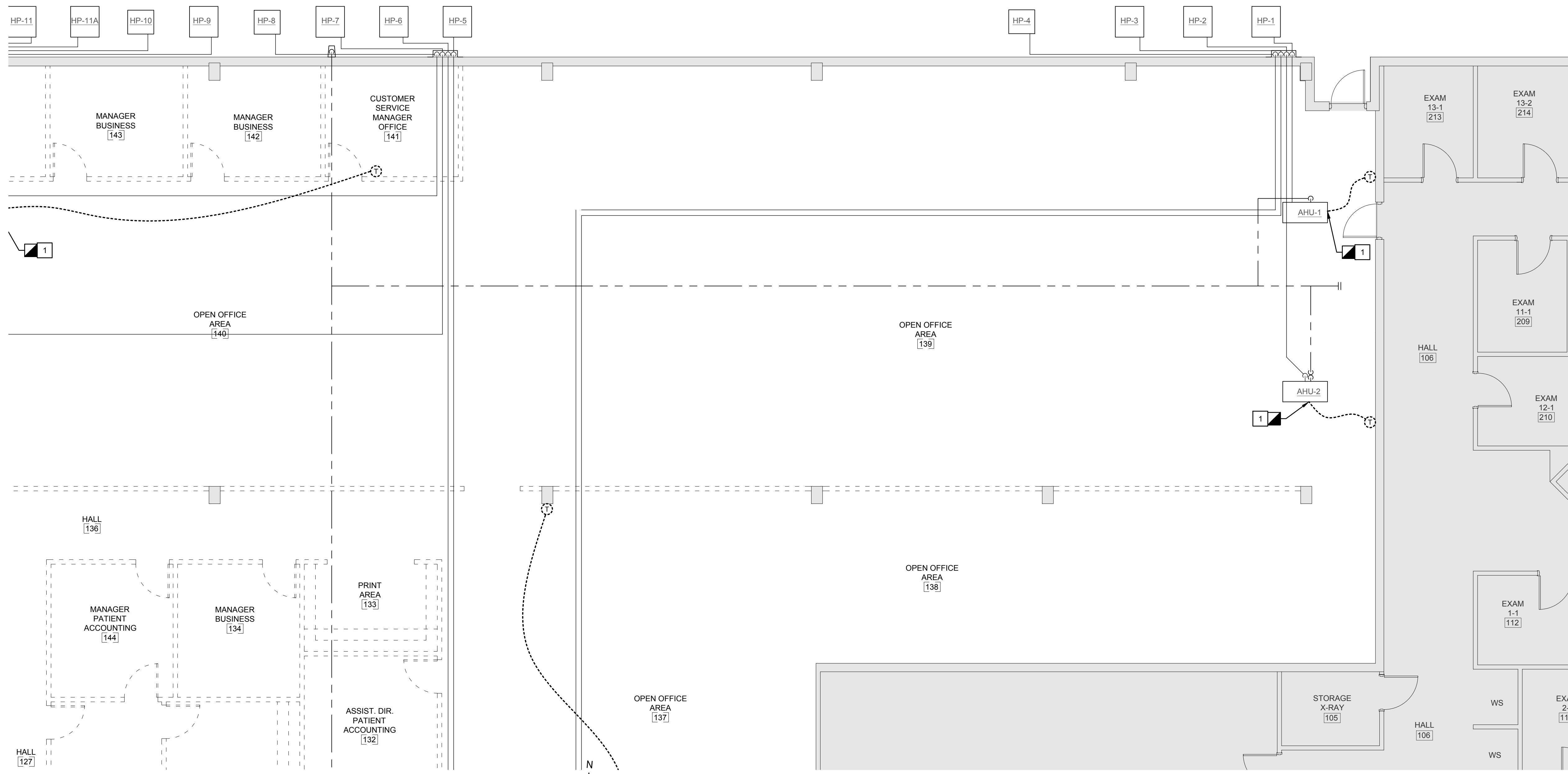
SHEET NAME:  
PARTIAL FLOOR PLAN -  
DEMOLITION - PIPING

SHEET NUMBER:  
**MD-203**

TOMAHAWK ENGINEERING PROJECT # 25029

SHEET DEMOLITION KEY NOTES:

1	DEMOLISH EXISTING THERMOSTAT, CONTROL WIRING, AND ALL ASSOCIATED APPURTENANCES. PROVIDE WITH NEW AS INDICATED ON AHU SCHEDULE. REPAIR, PATCH, AND PAINT EXISTING WALL SURFACES TO MATCH NEW. REFER TO ARCHITECTURAL DRAWINGS FOR FURTHER INFORMATION.
2	DEMOLISH EXISTING CARBON DIOXIDE DETECTOR AND ALL ASSOCIATED APPURTENANCES.



1 Partial Floor Plan - Demolition - Piping  
SCALE: 3/16" = 1'-0"

NOT FOR  
CONSTRUCTION

REGISTERED PROFESSIONAL  
ENGINEER IN THE STATE OF FLORIDA  
EXPIRES 12/31/2025  
RICHARD LINDBURG  
PE# 62829  
WESLEY THIGPEN, JR.  
PE# 65705

**Hoy + Stark**  
Architects  
Tallahassee Memorial  
HealthCare

**Tallahassee Memorial Healthcare**  
Outpatient Rehab Relocation  
1607 Saint James Court  
Tallahassee, FL 32308

This drawing is being released for the purpose of:  
**100% CONTRACT DOCUMENTS**

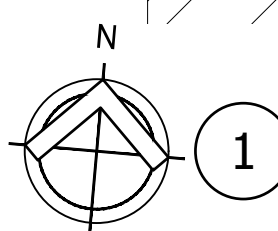
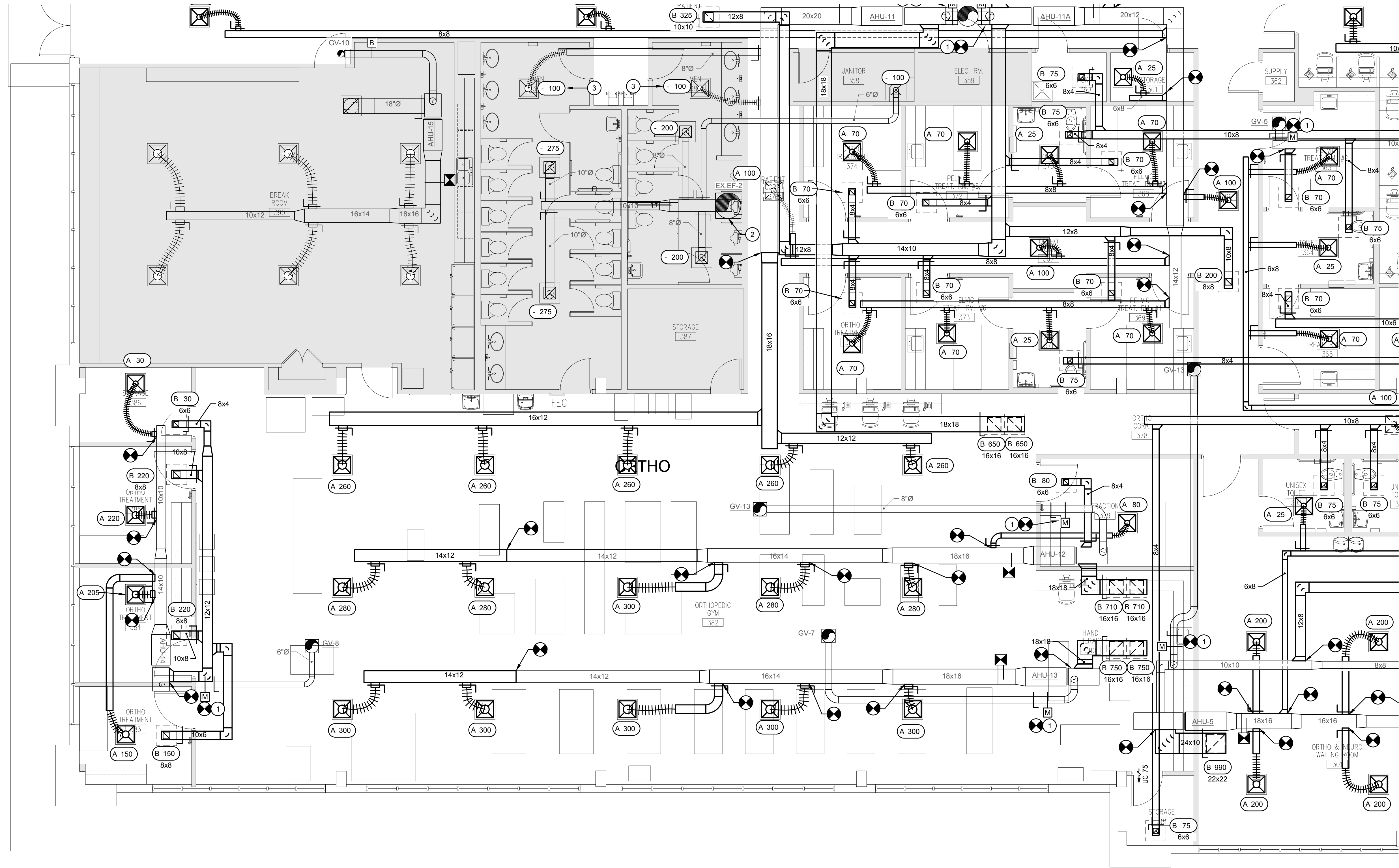
REV #	DATE	PHASE / REVISION	DWN	CHECK
04/03/26	100% OWNER REVIEW	BSS	WHT	
04/24/26	100% CONTRACT DOCUMENTS	BSS	WHT	

SHEET NAME:  
PARTIAL FLOOR PLAN -  
DEMOLITION - PIPING

SHEET NUMBER:  
**MD-204**

- SHEET NOTES:**
1. PRIOR TO PLACING AIR HANDLING EQUIPMENT BACK IN SERVICE, ENSURE PROPER OPERATION OF EXISTING DUCT MOUNTED SMOKE DETECTORS.
  2. REFER TO DETAILS FOR FURTHER INFORMATION REGARDING CONNECTIONS AND VERIFICATION OF COMPONENTS ASSOCIATED WITH EXISTING AIR HANDLING UNITS.

- SHEET RENOVATION KEY NOTES:**
1. PROVIDE A MOTORIZED DAMPER AND MANUAL BALANCE DAMPER FOR THE EXISTING FRESH AIR DUCT. FIELD VERIFY EXACT SIZE PRIOR TO ORDERING AND/OR INSTALLING. CONNECT MOTORIZED DAMPER TO CONTROL CIRCUIT FOR EXISTING UNIT. MOTORIZED DAMPER SHALL BE OPEN WHEN UNIT IS OPERATING AND CLOSED WHEN UNIT IS OFF. DAMPER NORMAL POSITION SHALL BE CLOSED. PROVIDE LOW VOLTAGE TRANSFORMER TIED INTO NEAREST RECEPTACLE CIRCUIT WITH SPARE CAPACITY TO POWER TRANSFORMER.
  2. REBALANCE EXHAUST FAN TO CFM VALUES INDICATED.
  3. BALANCE EXISTING DIFFUSER TO CFM INDICATED.



1 Partial Floor Plan - Renovation - Ductwork  
SCALE: 3/16" = 1'-0"

NOT FOR CONSTRUCTION

FL Seal: RICHARD LINDBURG  
PE# 62829  
WESLEY THIGPEN, JR.  
PE# 65705

**Hoy + Stark**  
Architects  
Tallahassee Memorial  
HealthCare

Tallahassee Memorial Healthcare  
Outpatient Rehab Relocation  
1607 Saint James Court  
Tallahassee, FL 32308

This drawing is being released for the purpose of:  
**100% CONTRACT DOCUMENTS**

REV #	DATE	PHASE / REVISION	CHECK	DWN
04/03/26	100% OWNER REVIEW	WHT	BSS	
04/24/26	100% CONTRACT DOCUMENTS	WHT	BSS	

PROJECT # 25029	
SHEET NAME: PARTIAL FLOOR PLAN - RENOVATION - DUCTWORK	
SHEET NUMBER: <b>M-101</b>	





- SHEET NOTES:**
1. PRIOR TO PLACING AIR HANDLING EQUIPMENT BACK IN SERVICE, ENSURE PROPER OPERATION OF EXISTING FRESH AIR DUCT. FIELD VERIFY EXACT SIZE PRIOR TO ORDERING AND/OR INSTALLING. CONNECT MOTORIZED DAMPER TO CONTROL CIRCUIT FOR EXISTING UNIT. MOTORIZED DAMPER SHALL BE OPEN WHEN UNIT IS OPERATING AND CLOSED WHEN UNIT IS OFF. DAMPER NORMAL POSITION SHALL BE CLOSED. PROVIDE LOW VOLTAGE TRANSFORMER TIED INTO NEAREST RECEPTACLE CIRCUIT WITH SPARE CAPACITY TO POWER TRANSFORMER.
  2. REFER TO DETAILS FOR FURTHER INFORMATION REGARDING CONNECTIONS AND VERIFICATION OF COMPONENTS ASSOCIATED WITH EXISTING AIR HANDLING UNITS.

- SHEET RENOVATION KEY NOTES:**
1. PROVIDE A MOTORIZED DAMPER AND MANUAL BALANCE DAMPER FOR THE EXISTING FRESH AIR DUCT. FIELD VERIFY EXACT SIZE PRIOR TO ORDERING AND/OR INSTALLING. CONNECT MOTORIZED DAMPER TO CONTROL CIRCUIT FOR EXISTING UNIT. MOTORIZED DAMPER SHALL BE OPEN WHEN UNIT IS OPERATING AND CLOSED WHEN UNIT IS OFF. DAMPER NORMAL POSITION SHALL BE CLOSED. PROVIDE LOW VOLTAGE TRANSFORMER TIED INTO NEAREST RECEPTACLE CIRCUIT WITH SPARE CAPACITY TO POWER TRANSFORMER.
  2. PROVIDE A MOTORIZED DAMPER FOR THE EXISTING FRESH AIR DUCT. FIELD VERIFY EXACT SIZE PRIOR TO ORDERING AND/OR INSTALLING. CONNECT MOTORIZED DAMPER TO CONTROL CIRCUIT FOR EXISTING UNIT. MOTORIZED DAMPER SHALL BE OPEN WHEN UNIT IS OPERATING AND CLOSED WHEN UNIT IS OFF. DAMPER NORMAL POSITION SHALL BE CLOSED. PROVIDE LOW VOLTAGE TRANSFORMER TIED INTO NEAREST RECEPTACLE CIRCUIT WITH SPARE CAPACITY TO POWER TRANSFORMER.

**NOT FOR CONSTRUCTION**

FL Seal: RICHARD LINDBURG  
PE# 62829  
WESLEY THIGPEN, JR.  
PE# 65705

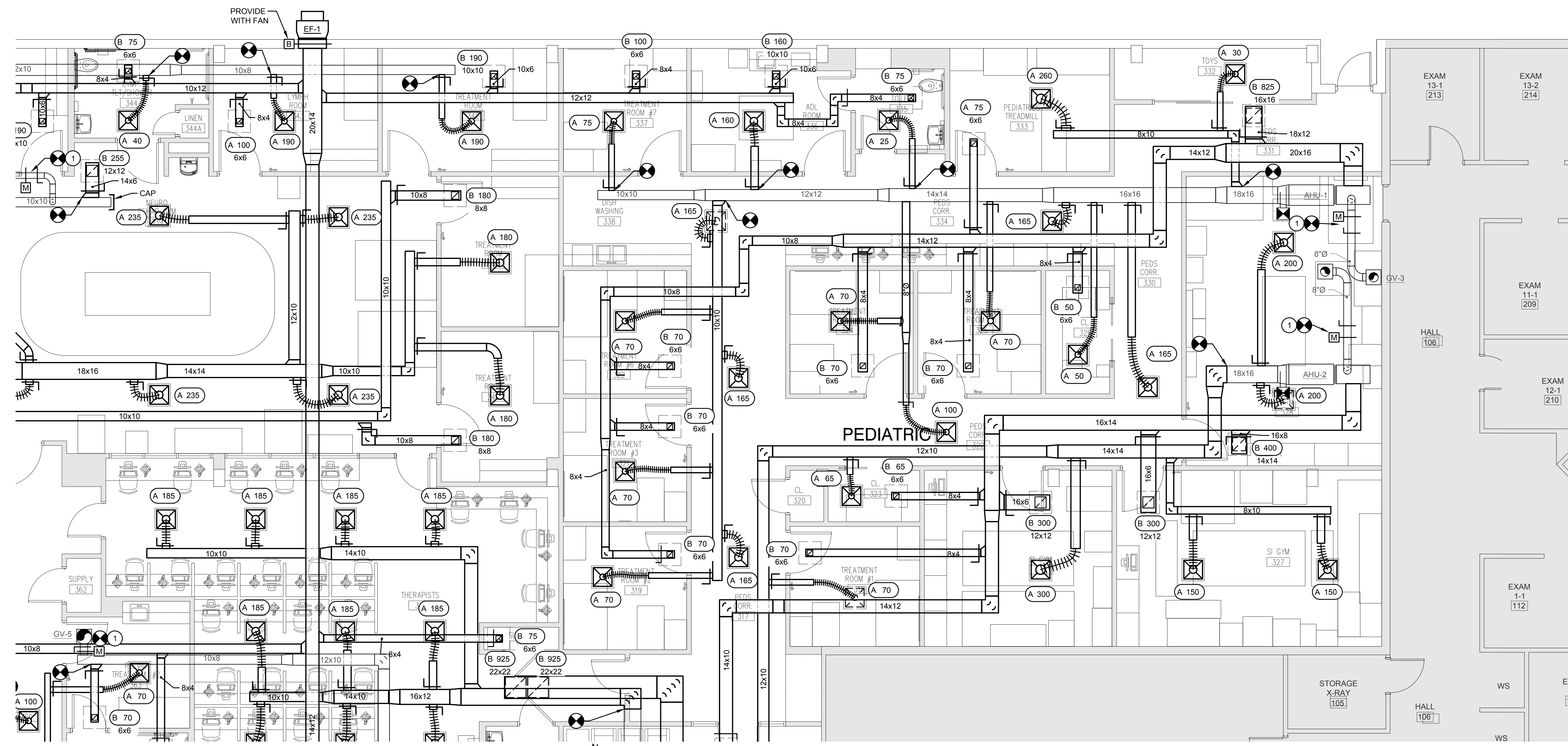
**Hoy + Stark**  
Architects  
Tallahassee Memorial  
HealthCare

**Tallahassee Memorial Healthcare**  
Outpatient Rehab Relocation  
1607 Saint James Court  
Tallahassee, FL 32308

This drawing is being released for the purpose of:  
**100% CONTRACT DOCUMENTS**

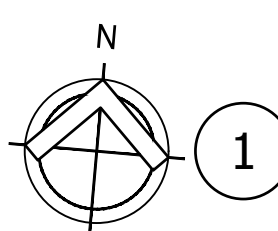
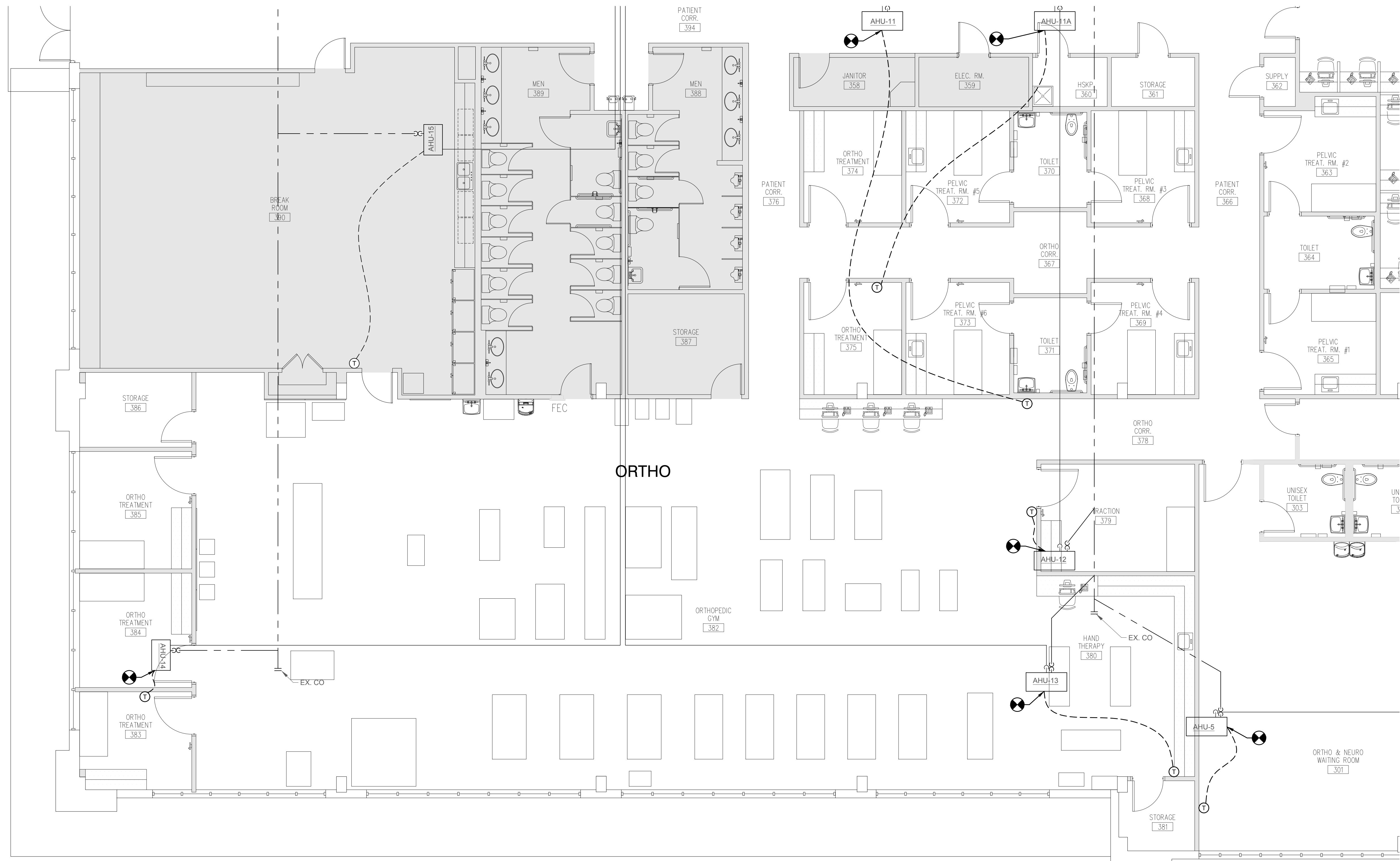
REV #	DATE	PHASE / REVISION	DWN	CHECK
1	04/03/26	100% OWNER REVIEW	BSS	WHT
2	04/24/26	100% CONTRACT DOCUMENTS	BSS	WHT

SHEET NAME:  
PARTIAL FLOOR PLAN - RENOVATION - DUCTWORK  
SHEET NUMBER:  
**M-104**



**1 Partial Floor Plan - Renovation - Ductwork**  
SCALE: 3/16" = 1'-0"

TOMAHAWK ENGINEERING PROJECT # 25029



1 Partial Floor Plan - Renovation - Piping  
SCALE: 3/16" = 1'-0"

NOT FOR  
CONSTRUCTION

REGISTERED PROFESSIONAL ENGINEER IN THE STATE OF FLORIDA  
RICHARD LINDBURG  
PE# 62829  
WESLEY THIGPEN, JR.  
PE# 65705  
FL Seal:

**Hoy + Stark**  
Architects  
Tallahassee Memorial  
HealthCare

**Tallahassee Memorial Healthcare**  
Outpatient Rehab Relocation  
1607 Saint James Court  
Tallahassee, FL 32308

This drawing is being released for the purpose of:  
**100% CONTRACT DOCUMENTS**

REV #	DATE	PHASE / REVISION	DWN	CHECK
04/03/26	100% OWNER REVIEW	BSS	WHT	
04/24/26	100% CONTRACT DOCUMENTS	BSS	WHT	

SHEET NAME:  
PARTIAL FLOOR PLAN - RENOVATION - PIPING

SHEET NUMBER:  
**M-201**

TOMAHAWK ENGINEERING PROJECT # 25029

**NOT FOR CONSTRUCTION**

FL Seal: RICHARD LINDBURG  
PE# 62829  
WESLEY THIGPEN, JR.  
PE# 65705

**Hoy + Stark**  
Architects  
Tallahassee Memorial  
HealthCare

**Tallahassee Memorial Healthcare**  
Outpatient Rehab Relocation  
1607 Saint James Court  
Tallahassee, FL 32308

This drawing is being released for the purpose of:

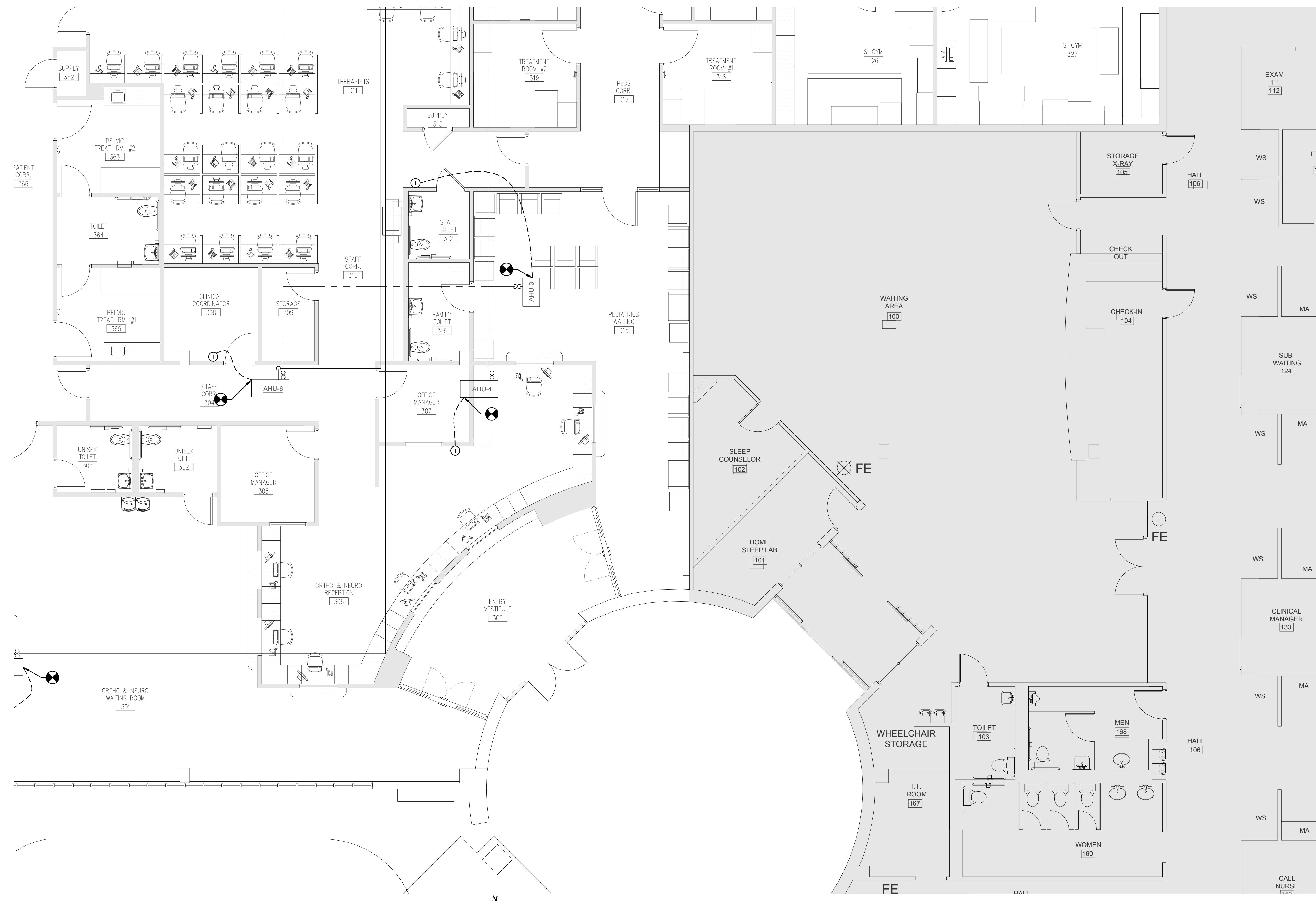
**100% CONTRACT DOCUMENTS**

REV #	DATE	PHASE / REVISION	DWN	CHECK
04/03/26	100% OWNER REVIEW	WHT	BSS	WHT
04/24/26	100% CONTRACT DOCUMENTS	WHT	BSS	WHT

SHEET NAME:  
PARTIAL FLOOR PLAN - RENOVATION - PIPING

SHEET NUMBER:  
**M-202**

TOMAHAWK ENGINEERING PROJECT # 25029



**1** Partial Floor Plan - Renovation - Piping  
SCALE: 3/16" = 1'-0"







