

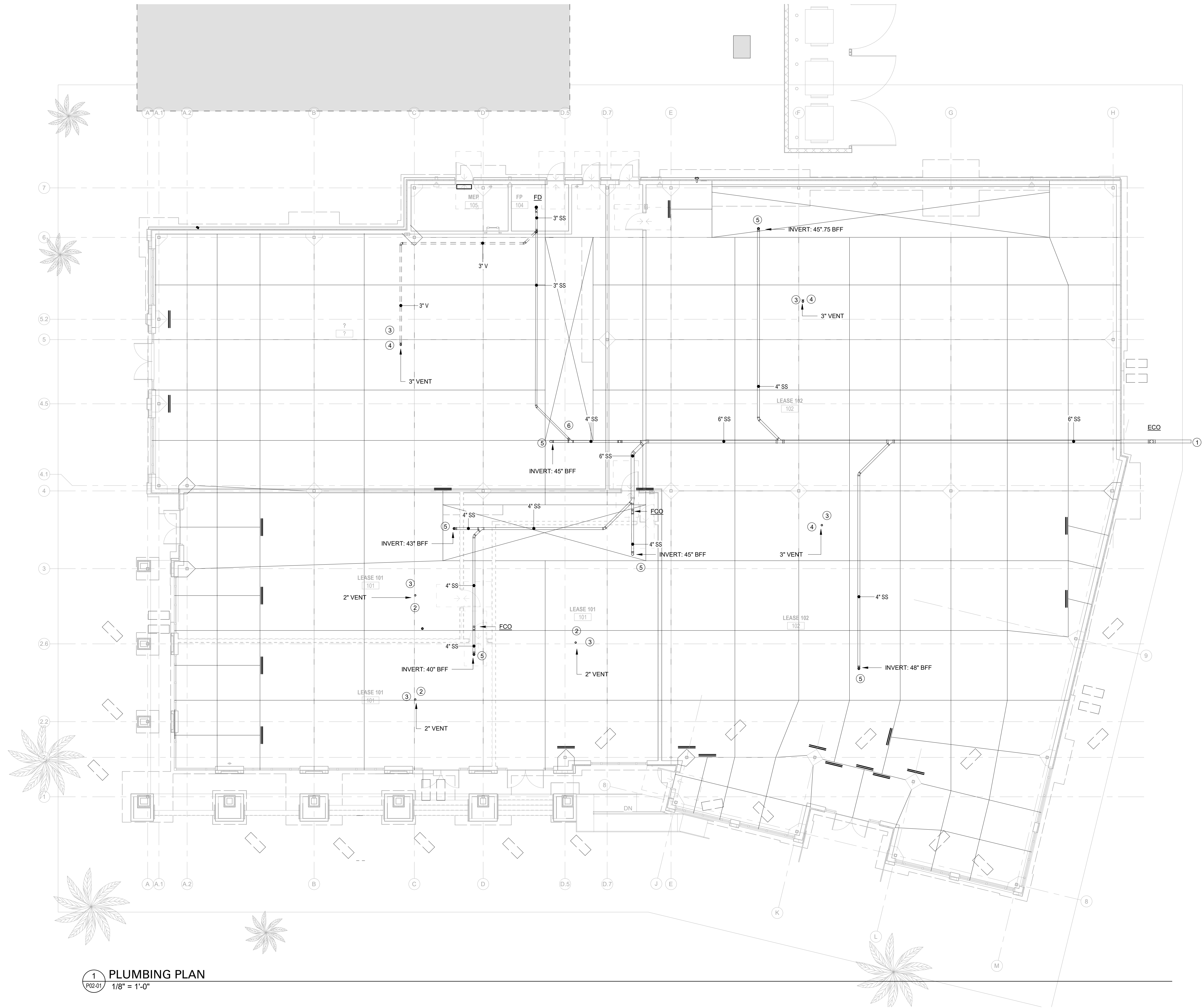
ISSUES		
1	12.19.2025	SCHEMATIC DESIGN
2	02.13.2026	DESIGN DEVELOPMENT
3	03.27.2026	ISSUE FOR PERMIT
4		
5		
6		
7		
8		
9		
10		

REVISIONS		

This Document was produced by or under the authority of Registered Engineer:

This document is incomplete and may not be used for regulatory approval, permit or construction.

Date of issue:
03.27.2026



1 PLUMBING PLAN
1/8" = 1'-0"

SANITARY

- KEYED PLUMBING NOTES:**
- PROVIDE EXTERIOR CLEANOUT WITHIN 5 FT OF BUILDING. 6" SANITARY BELOW GRADE. SEE CIVIL PLANS FOR CONTINUATION. PIPE INVERT SHALL BE 5' FT BFF.
 - RUN NEW 2" VENT THROUGH ROOF. PROVIDE TEMPORARY CAP ON TOP. VERIFY WITH LANDLORD/OWNER FOR LOCATION OF PENETRATION.
 - ALL VENTS THROUGH ROOF SHALL BE MINIMUM 10'-0" FROM AIR INTAKES.
 - RUN NEW 3" VENT THROUGH ROOF. PROVIDE TEMPORARY CAP ON TOP. VERIFY WITH LANDLORD/OWNER FOR LOCATION OF PENETRATION.
 - PROVIDE NEW 4" WASTE CAPPED AT FLOOR LEVEL FOR FUTURE TENANT.
 - CONTRACTOR SHALL CONNECT NEW 3" WASTE FROM MAIN SANITARY WASTE. 2" FLOOR DRAIN TO BE INSTALLED IN FP ROOM WITH 2" VENT UP.

WATERSOUND SPEC #10
74 ORIGINS MAIN STREET INLET BEACH, FL

PLUMBING PLAN - LEVEL ONE - OVERALL

JOB 22254.0600
DATE 03.27.2026
SHEET

P02-01

FL LICENSE #26759



WILSON & GIRGENTI, P.A.
200 E. ROBINSON STREET, STE. 970
ORLANDO, FL 32801
WORKWITHWG.COM
813.855.3330

3/26/2026 8:18:19 PM P02-01 PLUMBING PLAN - LEVEL ONE - OVERALL

ISSUES

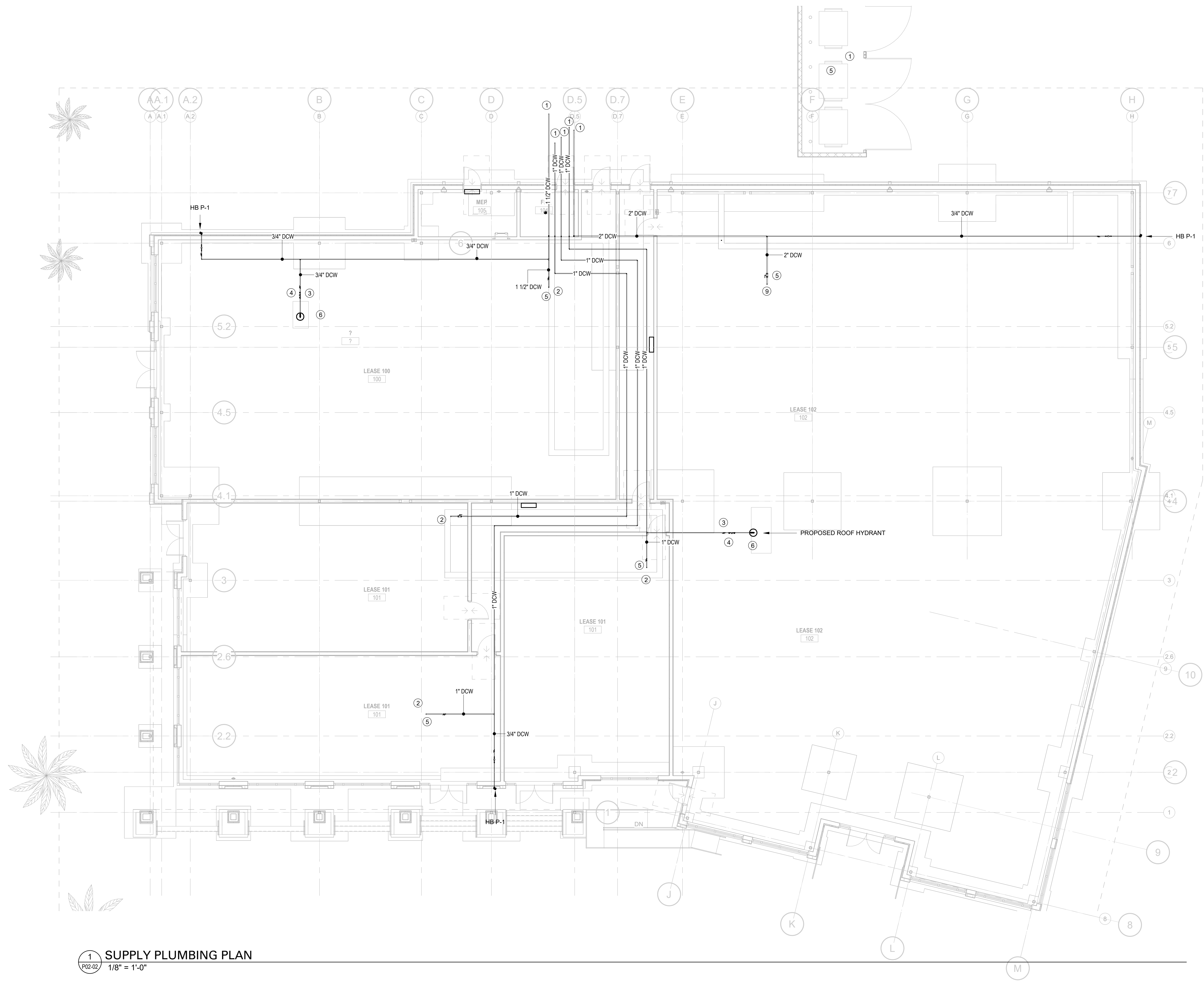
1	12.19.2025	SCHEMATIC DESIGN
2	02.13.2026	DESIGN DEVELOPMENT
3	03.27.2026	ISSUE FOR PERMIT
4		
5		
6		
7		
8		
9		
10		

REVISIONS

This Document was produced by or under the authority of Registered Engineer:

This document is incomplete and may not be used for regulatory approval, permit or construction.

Date of issue:
03.27.2026



1 SUPPLY PLUMBING PLAN
1/8" = 1'-0"

- KEYED PLUMBING NOTES:**
- CONNECT NEW COLD WATER LINE TO WATER METER. SEE CIVIL DRAWINGS FOR WATER METER CONNECTION AND POINT OF CONNECTION.
 - PROVIDE NEW 1" CW SERVICES FROM METER, AND PROVIDE SHUT-OFF VALVE WITH PERMANENT CAP FOR FUTURE CONNECTION FOR TENANT.
 - SHUT OFF VALVE TO BE INSTALLED.
 - SUB-METER SHALL BE INSTALLED.
 - PROVIDE PRESSURE REDUCING VALVE IF INCOMING PRESSURE EXCEEDS 80 PSI.
 - PROVIDE NEW ROOF HYDRANT ON UPPER ROOF. CONTRACTOR SHALL DETERMINE WITH LANDLORD / OWNER WHERE ROOF HYDRANT SHALL BE INSTALLED.
 - CONNECT NEW 1-1/2" CW SERVICES FROM METER, AND PROVIDE SHUT-OFF VALVE WITH PERMANENT CAP FOR FUTURE CONNECTION FOR TENANT.
 - CONNECT NEW 2" CW SERVICES FROM METER, AND PROVIDE SHUT-OFF VALVE WITH PERMANENT CAP FOR FUTURE CONNECTION FOR TENANT.

WATERSOUND SPEC #10
74 ORIGINS MAIN STREET INLET BEACH, FL

SUPPLY PLUMBING PLAN - LEVEL ONE - OVERALL

JOB 22254.0600
DATE 03.27.2026
SHEET

P02-02

FL LICENSE #26759

WILSON & GIRGENTI, P.A.
200 E. ROBINSON STREET, STE. 970
ORLANDO, FL 32801
WORKWITHWG.COM
813.855.3330

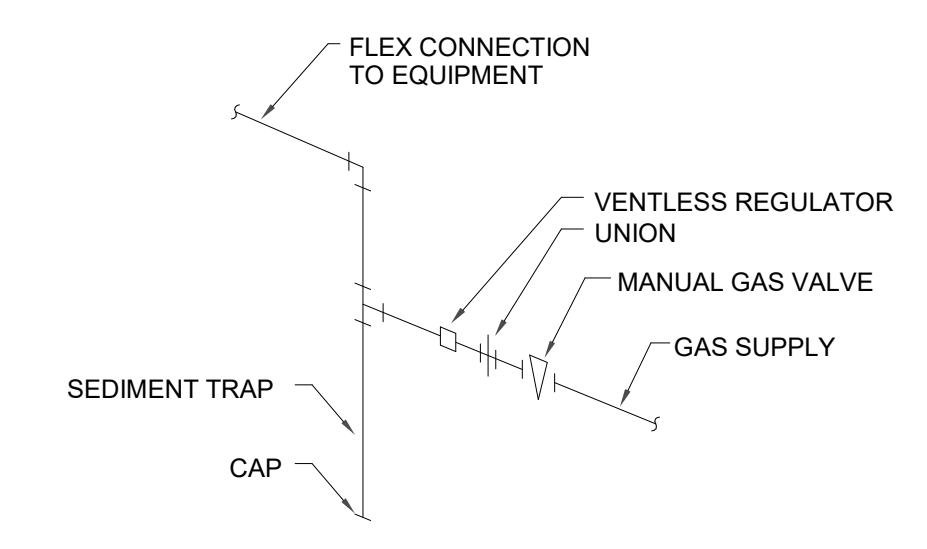


1 GAS PLUMBING PLAN
1/8" = 1'-0"

GAS EQUIPMENT SCHEDULE

MARK	DESCRIPTION	MBH	NOTES
RTU 100 A,B,C	RTU	80 MBH EA.	PROVIDE 6" DIRT LEG AT EQUIPMENT.
RTU 101 A,B,C	RTU	80 MBH EA.	
RTU 102, A,B,C,D	RTU	150 MBH EA.	
LEASE 100	TENANT	2,140 MBH	
LEASE 101	TENANT	1,040 MBH EA.	
LEASE 102	TENANT	4,000 MBH	

GAS PIPING SIZE BASED ON TOTAL ANTICIPATED LOAD OF 8,260 MBH @ . PER TABLE 402.4(5) (2 PSI, 1PSI PD, 0.60 PD.) OF THE 2023 FLORIDA FUEL GAS CODE. INSTALLATION OF PIPING SHALL COMPLY WITH ALL LOCAL, STATE BUILDING CODES. PIPING LOCATED UNDER SOLID FLOORS SHALL BE INSTALLED IN A CONDUIT OF SCHEDULE 40 PVC IN ACCORDANCE WITH SECTION 404.8 OF THE 2023 8TH EDITION FLORIDA FUEL GAS CODE.



TYPICAL GAS TRAIN DETAIL
NTS

- KEYED PLUMBING NOTES:**
- IF METER LOCATION IS DIFFERENT THAN SHOWN, NOTIFY ENGINEER FOR RESIZING OF GAS LINES.
 - CONNECT NEW 1" GAS SERVICES FROM MAIN GAS LINE, AND PROVIDE MANUAL SHUT-OFF VALVE WITH PERMANENT CAP FOR FUTURE CONNECTION FOR TENANT.
 - CONNECT NEW 1-1/4" GAS SERVICES FROM MAIN GAS LINE, AND PROVIDE MANUAL SHUT-OFF VALVE WITH PERMANENT CAP FOR FUTURE CONNECTION FOR TENANT.
 - THE MAX GAS USAGE FOR THIS END FUTURE TENANT LIMITED TO 2,140 MBH.
 - THE MAX GAS USAGE FOR THIS FUTURE TENANT LIMITED TO 1,040 MBH.
 - CONNECT NEW 2" GAS SERVICES FROM MAIN GAS LINE, AND PROVIDE MANUAL SHUT-OFF VALVE WITH PERMANENT CAP FOR FUTURE CONNECTION FOR TENANT.
 - THE MAX GAS USAGE FOR THIS END FUTURE TENANT LIMITED TO 2,000 MBH.
 - PROVIDE GAS LINE FOR NEW RTU. SHUT OFF VALVE SHALL BE INSTALLED.

ISSUES

1	12.19.2025	SCHEMATIC DESIGN
2	02.13.2026	DESIGN DEVELOPMENT
3	03.27.2026	ISSUE FOR PERMIT
4		
5		
6		
7		
8		
9		
10		

REVISIONS

This Document was produced by or under the authority of Registered Engineer:

This document is incomplete and may not be used for regulatory approval, permit or construction.

Date of issue:
03.27.2026

WATERSOUND SPEC #10
74 ORIGINS MAIN STREET INLET BEACH, FL

GAS PLAN - LEVEL ONE - OVERALL

FL LICENSE #26759

WILSON & GIRGENTI, P.A.
200 E. ROBINSON STREET, STE. 970
ORLANDO, FL 32801
WORKWITHWG.COM
813.855.3330

JOB 22254.0600
DATE 03.27.2026
SHEET

P02-03

ISSUES	
1	12.19.2025 SCHEMATIC DESIGN
2	02.13.2026 DESIGN DEVELOPMENT
3	03.27.2026 ISSUE FOR PERMIT
4	
5	
6	
7	
8	
9	
10	

REVISIONS	

This Document was produced by or under the authority of Registered Engineer:

This document is incomplete and may not be used for regulatory approval, permit or construction.

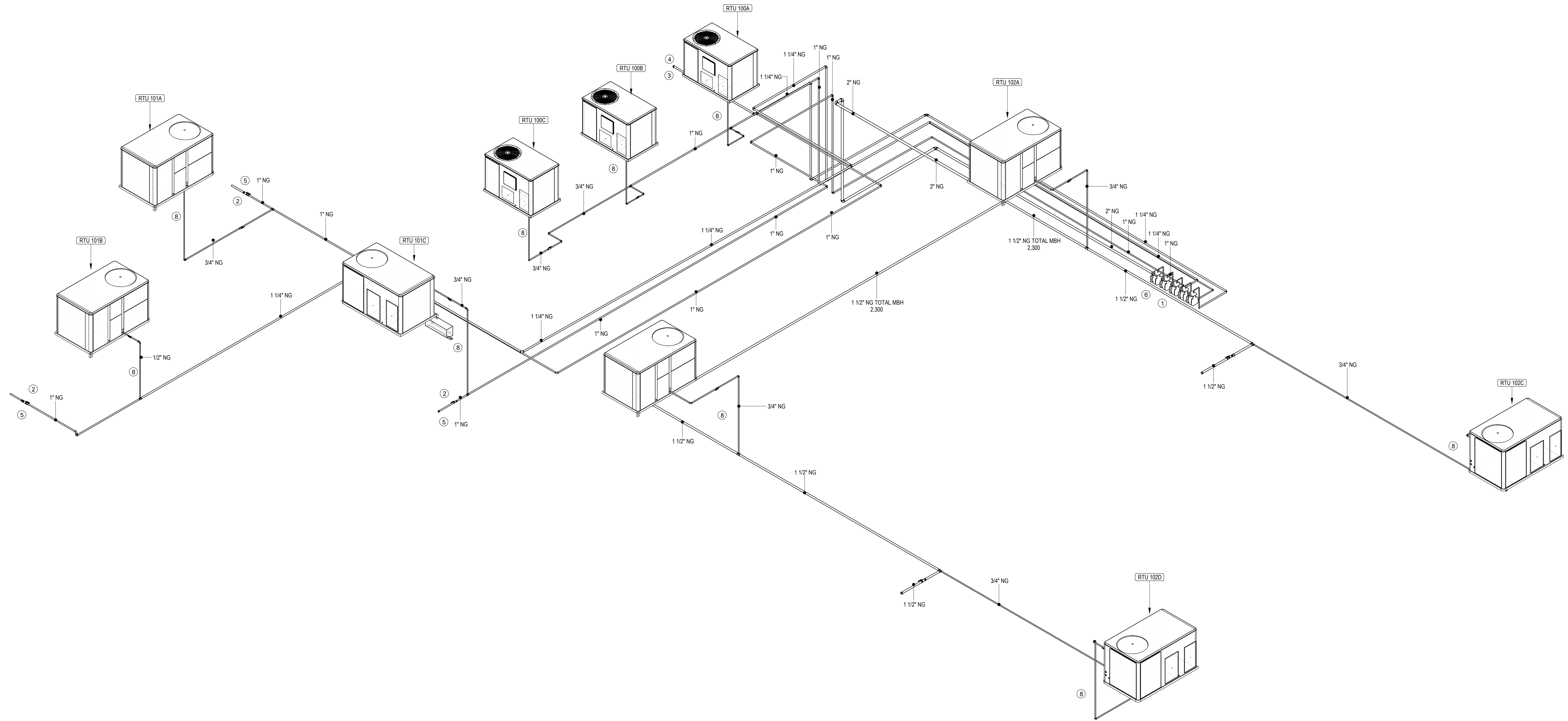
Date of issue:
03.27.2026

WATERSOUND SPEC #10
74 ORIGINS MAIN STREET INLET BEACH, FL

GAS RISER DIAGRAM

JOB 22254.0600
DATE 03.27.2026
SHEET

P05-02



1 GAS RISER DIAGRAM
P05-02

- KEYED PLUMBING NOTES:**
- ① IF METER LOCATION IS DIFFERENT THAN SHOWN, NOTIFY ENGINEER FOR RESIZING OF GAS LINES.
 - ② CONNECT NEW 1" GAS SERVICES FROM MAIN GAS LINE, AND PROVIDE MANUAL SHUT-OFF VALVE WITH PERMANENT CAP FOR FUTURE CONNECTION FOR TENANT.
 - ③ CONNECT NEW 1-1/4" GAS SERVICES FROM MAIN GAS LINE, AND PROVIDE MANUAL SHUT-OFF VALVE WITH PERMANENT CAP FOR FUTURE CONNECTION FOR TENANT.
 - ④ THE MAX GAS USAGE FOR THIS END FUTURE TENANT LIMITED TO 2,140 MBH.
 - ⑤ THE MAX GAS USAGE FOR THIS FUTURE TENANT LIMITED TO 1,040 MBH.
 - ⑥ CONNECT NEW 2" GAS SERVICES FROM MAIN GAS LINE, AND PROVIDE MANUAL SHUT-OFF VALVE WITH PERMANENT CAP FOR FUTURE CONNECTION FOR TENANT.
 - ⑦ THE MAX GAS USAGE FOR THIS END FUTURE TENANT LIMITED TO 2,000 MBH.
 - ⑧ PROVIDE GAS LINE FOR NEW RTU. SHUT OFF VALVE SHALL BE INSTALLED.

FL LICENSE #26759

WILSON & GIRGENTI, P.A.
200 E. ROBINSON STREET, STE. 970
ORLANDO, FL 32801
WORKWITHWG.COM
813.855.3330

