

**I.T. NOTE(S)**

- 12 PRIOR TO ROUGH-IN, COORDINATE WITH OWNER/I.T. CONTRACTOR FOR EXACT MOUNTING LOCATIONS OF WALL-MOUNTED JUNCTION BOX TO SERVE IP AND POE COMBINATION TALK-BACK INTERCOM/PA SPEAKER/SIGN/FLASHER/CLOCK WITH SOFTWARE VOLUME CONTROL. INSTALL 3/4" CONDUIT FROM DEVICE JUNCTION BOX TO NEW JUNCTION CABINET (SEE NOTE #18) AND THEN TO EXISTING PATHWAY TO HEAD-IN EQUIPMENT IN ADJACENT 2-STORY TOMMY SMITH CLASSROOM BUILDING COMMUNICATION ROOM 124. FOR BID PURPOSES, EC TO INSTALL TWO(2) RUNS OF CAT 6 CABLING, THAT IS YELLOW IN COLOR. FIELD-VERIFY WITH I.T. CONTRACTOR FOR ACTUAL NUMBER OF CABLES REQUIRED PRIOR TO PULLING CABLES. NOTE: DEVICE IS TO BE OWNER FURNISHED (WITH WIRE-GUARD) AND INSTALLED BY I.T. CONTRACTOR. EC TO COORDINATE WITH EXACT EQUIPMENT TO BE SUPPLIED FOR ANY SPECIAL MOUNTING REQUIREMENTS (DESIGN BASED ON VALCOM #V1520BK-F). ALL PULL-BOXES INSTALLED IN CONDUIT RUN IS TO BE PAINTED WITH YELLOW PAINT TO MATCH CABLE COLOR, OR OTHERWISE MARKED TO DENOTE PULL-BOX AS INTERCOM CABLE. ALL INSTALLED CABLES ARE TO BE IDENTIFIED AT BOTH ENDS.
- 13 PRIOR TO ROUGH-IN, EC TO FIELD-COORDINATE EXACT LOCATIONS FOR WALL-MOUNTED PA CALL BUTTON WITH EMERGENCY (VALCOM #VE2972). INSTALL 3/4" CONDUIT FROM CALL BUTTON TO TALK-BACK SPEAKER. INSTALL TWO(2) CAT 6 CABLES IN CONDUIT AND IDENTIFY CABLES AT BOTH ENDS. NOTE: CALL BUTTON IS TO BE OWNER FURNISHED AND INSTALLED BY I.T. CONTRACTOR.
- 14 EC TO COORDINATE WITH GC/I.T. CONTRACTOR FOR INSTALLATION REQUIREMENTS OF EXTERIOR ONE-WAY INTERCOM/PA SPEAKER (VALCOM #V1P-130AL). FIELD-VERIFY WITH EXACT EQUIPMENT SUPPLIED FOR ANY SPECIAL MOUNTING REQUIREMENTS. NOTE: DEVICE IS TO BE OWNER FURNISHED (WITH WIRE-GUARD) AND INSTALLED BY I.T. CONTRACTOR. SEE NOTE #12, THIS SHEET, FOR CONDUIT, CABLING, AND COLOR REQUIREMENTS. ALL INSTALLED CABLES ARE TO BE IDENTIFIED AT BOTH ENDS.
- 15 PRIOR TO ROUGH-IN, COORDINATE WITH OWNER/SECURITY CONTRACTOR FOR EXACT MOUNTING LOCATION OF WALL-MOUNTED J-BOX FOR SECURITY CAMERA. INSTALL 3/4" CONDUIT FROM DEVICE JUNCTION BOX TO NEW TERMINATION CABINET AND THEN TO EXISTING PATHWAY TO HEAD-IN EQUIPMENT IN ADJACENT 2-STORY TOMMY SMITH CLASSROOM BUILDING COMMUNICATION ROOM 124. FOR BID PURPOSES, EC TO INSTALL TWO(2) RUNS OF CAT 6 CABLING, THAT IS GREEN IN COLOR. FIELD-VERIFY WITH SECURITY CONTRACTOR ACTUAL NUMBER OF CABLES REQUIRED PRIOR TO PULLING CABLES. NOTE: INTERIOR CAMERA IS TO BE OWNER FURNISHED (I.P.R.O. W-527700-V2L 8 MP 4K) INDOOR FIXED CAMERA (COLOR-WHITE) WITH WIRE-GUARD TO BE INSTALLED BY SECURITY CONTRACTOR. EC TO COORDINATE WITH EXACT EQUIPMENT TO BE SUPPLIED FOR ANY SPECIAL MOUNTING REQUIREMENTS. ALL PULL-BOXES INSTALLED IN CONDUIT RUN IS TO BE PAINTED WITH GREEN PAINT TO MATCH CABLE COLOR, OR OTHERWISE MARKED TO DENOTE PULL-BOX AS SECURITY CAMERA CABLE. ALL INSTALLED CABLES ARE TO BE IDENTIFIED AT BOTH ENDS.
- 16 PRIOR TO ROUGH-IN, COORDINATE WITH OWNER/SECURITY CONTRACTOR FOR EXACT MOUNTING LOCATION OF EXTERIOR J-BOX FOR CORNER SECURITY CAMERA. NOTE: OUTDOOR CAMERA IS TO BE OWNER FURNISHED (I.P.R.O. W-58574L 3.7 MEGAPIXEL HI-RES 4x4K MULTI-IMAGER OUTDOOR FIXED CAMERA (COLOR-WHITE). INSTALL AND SETUP FOR 270 DEGREE VIEW PLUS DOWNLOOK. CORNER MOUNT USING PANASONIC WV-QSR502-W SHROULD. PANASONIC WV-QWL5015-W CORROSION RESISTANT OUTDOOR WALL MOUNT AND PANASONIC WV-QSR502-W CORNER MOUNT ADAPTER. REFER TO NOTE #15, THIS SHEET, FOR CONDUIT, CABLE, AND MARKING/IDENTIFICATION REQUIREMENTS.
- 17 PRIOR TO ROUGH-IN, COORDINATE WITH OWNER/I.T. CONTRACTOR FOR QUANTITY AND MOUNTING LOCATIONS OF JUNCTION BOXES FOR OWNER FURNISHED WIRELESS INTERNET ACCESS POINTS (WITH WIRE-GUARD). FIELD-COORDINATE ANY SPECIAL MOUNTING REQUIREMENTS WITH EXACT EQUIPMENT SUPPLIED. FROM EACH WIRELESS ACCESS POINT, INSTALL 3/4" CONDUIT FROM DEVICE JUNCTION BOX TO NEW TERMINATION CABINET AND THEN TO EXISTING PATHWAY TO HEAD-IN EQUIPMENT IN ADJACENT 2-STORY TOMMY SMITH CLASSROOM BUILDING COMMUNICATION ROOM 124. FOR BID PURPOSES, EC TO INSTALL TWO(2) RUNS OF CAT 6 CABLING, THAT IS RED IN COLOR. FIELD-VERIFY WITH I.T. CONTRACTOR FOR ACTUAL NUMBER OF CABLES REQUIRED PRIOR TO PULLING CABLES. NOTE: ALL PULL-BOXES INSTALLED IN CONDUIT RUN IS TO BE PAINTED WITH RED PAINT TO MATCH CABLE COLOR, OR OTHERWISE MARKED TO DENOTE PULL-BOX AS WIRELESS INTERNET CABLE. ALL INSTALLED CABLES ARE TO BE IDENTIFIED AT BOTH ENDS.
- 18 EC TO COORDINATE WITH GC/I.T. CONTRACTOR FOR INSTALLATION OF NEW 10"x10" PAINTERCOM AND INTERNET JUNCTION CABINET. THE MAIN COMMUNICATIONS HEAD-IN EQUIPMENT IS LOCATED IN ADJACENT 2-STORY TOMMY SMITH CLASSROOM BUILDING COMMUNICATION ROOM 124. DESIGN INTENT IS TO USE EXISTING COMMUNICATIONS HAND-HOLE, THAT IS LOCATED NEAR THE SIDEWALK THAT CONNECTS THE PAVILION TO MAIN CAMPUS, AND ITS EXISTING PATHWAY TO THE MAIN I.T. ROOM. SEE ELECTRICAL SITE PLAN ON SHEET 'E1.0' FOR HAND-HOLE LOCATION. COORDINATE WITH CC/OWNER FOR JUNCTION CABINET LOCATION AND ALL INTERCONNECTION ROUTING.
- 19 TO ISOLATE SECURITY CAMERA HOMERUN, EC IS TO COORDINATE WITH CC/SECURITY CONTRACTOR FOR INSTALLATION OF NEW 10"x10" SECURITY WIRING JUNCTION CABINET. COORDINATE WITH OWNER/SECURITY CONTRACTOR FOR INTERCONNECTION TO SECURITY HEAD-IN EQUIPMENT.

**GENERAL NOTE(S)**

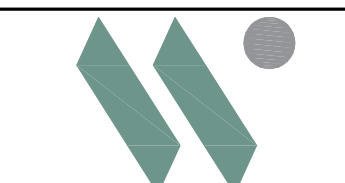
- 1. PROVIDE WIRE GUARDS FOR ALL NEW LIGHTING AND EMERGENCY LIGHTING FIXTURES IN SPORTS FLOOR AREA.

**SHEET NOTES**

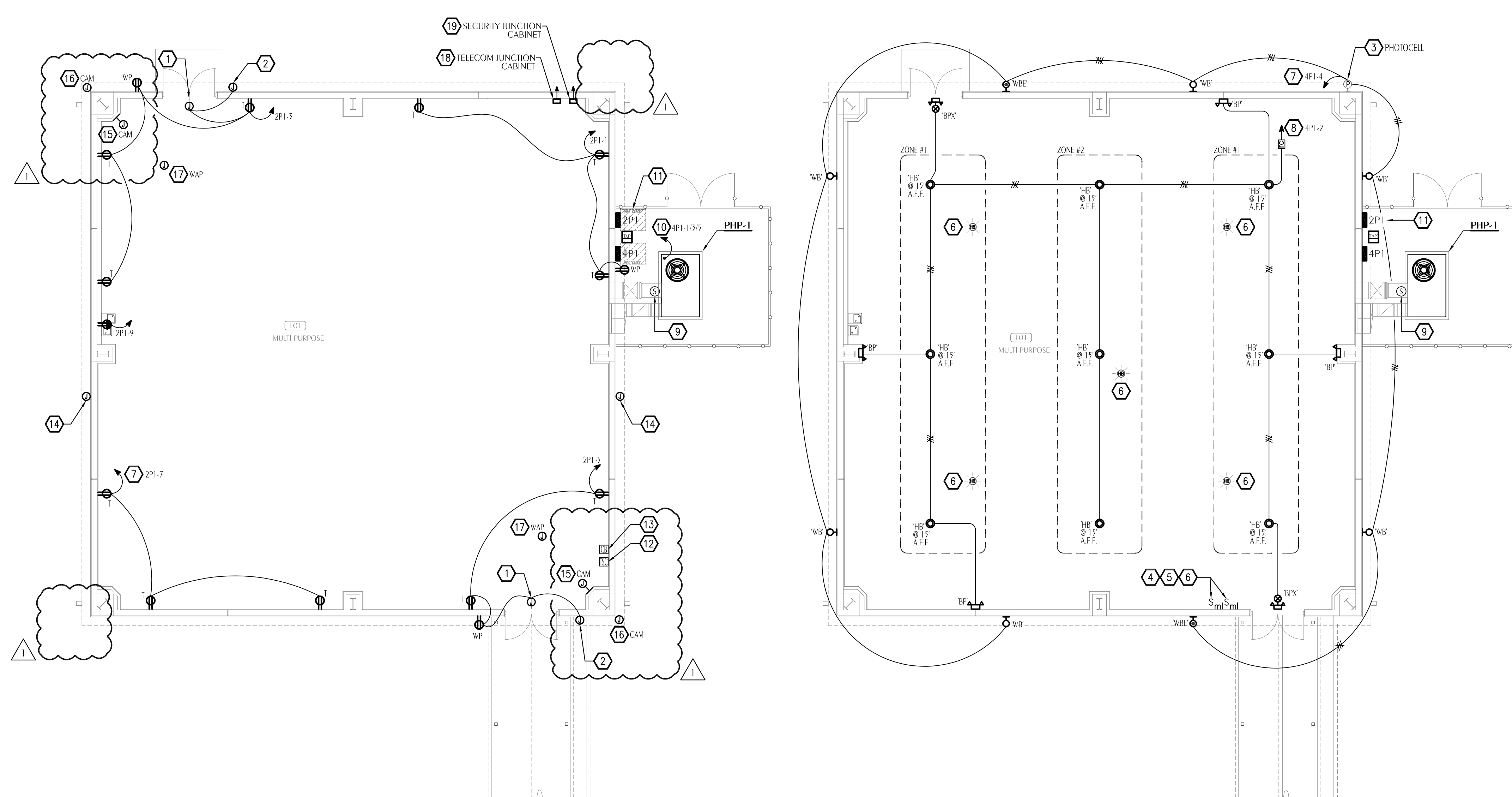
- 1 EC TO FURNISH/INSTALL SURFACE MOUNTED J-BOX ABOVE DOOR TO ACCOMMODATE CARD ACCESS DOOR POWER SUPPLY (IDK-LAMBDA RW5150B), CONTROL WIRING, AND DOOR LOCK (GR #184-12WC) WIRING. COORDINATE WITH CC SECURITY SUBCONTRACTOR FOR EXACT MOUNTING LOCATION, SIZE OF J-BOX, AND LOCATION OF (DSX-1042) CONTROLLER. NOTE: DOOR EQUIPMENT TO BE OWNER FURNISHED. CC SECURITY SUBCONTRACTOR TO INSTALL EQUIPMENT AND CABLING.
- 2 EC TO FURNISH/INSTALL J-BOX AND 3/4" CONDUIT TO ACCESSIBLE LOCATION ABOVE SECURE SIDE OF DOOR FOR OWNER FURNISHED SECURITY CARD READER (HID SIGNO #40). COORDINATE WITH CC SECURITY SUBCONTRACTOR FOR MOUNTING REQUIREMENTS OF J-BOX. NOTE: SECURITY EQUIPMENT TO BE OWNER FURNISHED. CC SECURITY SUBCONTRACTOR TO INSTALL EQUIPMENT AND CABLING.
- 3 PHOTOCELL TO BE SHIELDED/ROTATED SO THAT ADJACENT EXTERIOR LIGHTING DOES NOT INTERFERE WITH ITS PROPER OPERATION.
- 4 PRIOR TO ROUGH-IN, FIELD-VERIFY EXACT LOCATION OF LOW-VOLTAGE SWITCH WITH CC/OWNER.
- 5 PROVIDE PROTECTIVE POLYCARBONATE COVER FOR SWITCH.
- 6 SEE DETAIL #2, "DIGITAL LIGHTING MANAGEMENT DETAIL" ON SHEET 'E0.2'. STEM-MOUNT SENSOR TO 1.4" A.F.F.
- 7 TO COMBAT VOLTAGE DROP AND COMPLY WITH NEC, ENTIRE CIRCUIT TO BE A MINIMUM OF #10CU.
- 8 INSTALL NEW CIRCUITS (#10CU MIN) FOR LED HIGH-BAY FIXTURES. CIRCUIT TO BE ROUTED VIA 'RC' (ROOM CONTROLLER). FIELD-COORDINATE LOCATION OF 'RC'. REFER TO SHEET 'E0.2' FOR ADDITIONAL REQUIREMENTS FOR LOW-VOLTAGE LIGHTING CONTROLS.
- 9 DUCT-MOUNTED SMOKE DETECTOR TO BE FURNISHED BY EC/FIRE ALARM CONTRACTOR. INSTALLED BY MECHANICAL CONTRACTOR, AND THEN CONNECTED TO FIRE ALARM SYSTEM BY EC/FIRE ALARM CONTRACTOR. SEE SHEET 'E1.2'.
- 10 DUE TO DISTANCE FROM PANEL, DISCONNECT SWITCH NOT NEEDED. INSTALL #8 1#8 GND IN 1-1/4" CONDUIT IS TO BE ROUTED ABOVE GROUND TO PANEL '4P1'. LIQUID-TIGHT FLEXIBLE CONDUIT MAY BE USED PROVIDED FLEX LENGTH DOES NOT EXCEED 6' AND IS PROPERLY SECURED TO PREVENT UNWANTED MOVEMENT.
- 11 PRIOR TO ROUGH-IN, EC TO COORDINATE ALL EQUIPMENT LOCATIONS TO AVOID CONFLICTS WITH BUILDING DOWNSPOUTS AND TO ENSURE REQUIRED NEC AND HVAC MAINTENANCE CLEARANCES ARE MAINTAINED. SHIFT HVAC UNIT AND/OR ELECTRICAL EQUIPMENT AS NEEDED.

REVISIONS				
NO.	DESCRIPTION	DRAWN	CHECKED	DATE
1	ADDENDUM #1	9BH	ALD	04/29/26
PHASE				
SCHEMATIC DESIGN	DRAWN	CHECKED	DATE	
DESIGN DEVELOPMENT	EMJ	ALD	01/23/26	
CONSTRUCTION DOCUMENTS	EMJ	ALD	03/06/26	

**JRA ARCHITECTS** 2211 NAVY BLVD, STE 100  
 PANAMA CITY BEACH, FL  
 PHONE: (850) 236-9832  
 Commission Number: 25813

CONSULTANTS:  
  
**WATFORD ENGINEERING**  
 4432 Ophir Street, Melbourne, Florida 32946 Florida Certificate of Authorization: 27825  
 800.226.3447 Project Number: 2020-001 Anthony J. Davis, PE Florida License: 52163

PROJECT:  
**BAY DISTRICT SCHOOLS COVERED PLAY ENCLOSURE TOMMY SMITH ELEMENTARY**  
 PANAMA CITY, FLORIDA  
 SHEET TITLE:  
**ELECTRICAL NEW WORK POWER AND LIGHTING PLANS**  
 SHEET NUMBER:  
**E1.1**



**1 ELECTRICAL NEW WORK POWER PLAN**  
 E1.1 SCALE: 1/8" = 1'-0"

**2 ELECTRICAL NEW WORK LIGHTING PLAN**  
 E1.1 SCALE: 1/8" = 1'-0"