

# MECHANICAL ABBREVIATIONS LEGEND

<b>A</b>	ABSOLUTE ABOVE AIR CHANGES PER HOUR ACCESS DOOR ADJUSTABLE ABOVE FINISHED FLOOR ABOVE FINISHED GRADE AIR HANDLING UNIT ALTITUDE AMBIENT AMERICAN NATIONAL STANDARDS INSTITUTE ACCESS PANEL AIR PRESSURE DROP APPROXIMATE ABOVE RAISED FLOOR ALL SERVICE JACKET AUTOMATIC TEMPERATURE CONTROL ATMOSPHERE ACID WASTE ACID WASTE STACK ACID VENT STACK	<b>E</b>	(E) EACH / EXHAUST AIR ENTERING AIR TEMPERATURE EVAPORATIVE COOLING UNIT ELECTRIC DUCT HEATER ENERGY EFFICIENCY RATIO EXHAUST FAN ELEVATION ELECTRICAL / ELECTRIC EQUIVALENT ENERGY RECOVERY VENTILATOR EXTERNAL STATIC PRESSURE EXPANSION TANK ELECTRIC UNIT HEATER ELECTRIC WATER COOLER ELECTRIC WALL HEATER EMERGENCY EYEWASH/SHOWER ENTERING WATER TEMPERATURE EXHAUST AIR EXPANSION	<b>K</b>	KPA KG KVA KW	<b>L</b>	LAT LBS LBS/HR LD LG LIQ L/S LWT	<b>M</b>	MAU MAX MBH MC MCA MCC MD MECH MEZZ MIN MISC M METERS MILLIMETERS MAXIMUM OVER-CURRENT PROTECTION MAXIMUM OVER-CURRENT PROTECTION MOUNTED MAKE-UP WATER	<b>N</b>	NC NEG NIC NO. N.O. NOM NTS	<b>O</b>	OA OAI OAT OAU OBD OC OD OW OZ	<b>P</b>	P P A PA PD PDI PH POC POS PRI PRESS PSI PSIG PTAC PVC	<b>Q</b>	QTY	<b>R</b>	RA RD REF REL. A RH RHC RI RL RO RPM RS	<b>S</b>	SA SCH SD SH SKD SEER SENS SF SFM SP SPEC SOV SRD ST STL T TAD TEMP TOF TOU TOL TOS TOT TP TSP T-STAT TUP TYP T&P	<b>U</b>	UN U/F U/G	<b>V</b>	V VAV VEL VFD VOL VTR	<b>W</b>	W WC WG WH WA WO WPD WS WSHP W/TP W/W W/O	<b>Z</b>	Z ZN											
<b>B</b>	BOILER BASEBOARD HEATERS BACKDRAFT DAMPER BELOW FLOOR BRAKE HORSEPOWER BUILDING MANAGEMENT SYSTEM BOTTOM OF DUCT BOTTOM OF FAN BOTTOM OF LOUVER BOTTOM OF PIPE BOTTOM OF STEEL BRITISH THERMAL UNIT PER HOUR	<b>F</b>	FAHRENHEIT FIRE ALARM FLEXIBLE CONNECTION FLOOR CLEANOUT FAN COIL UNIT FIRE DAMPER/FLOOR DRAIN FLOOR FULL LOAD AMPERES FLOOR DRAIN FLAT ON BOTTOM FAN POWERED VARIABLE AIR VOLUME BOX FEET PER MINUTE FEET PER SECOND FLOOR SINK FIRE/SMOKE DAMPER FIBRE SCRM KRAFT FEET OR FOOT FOOTING	<b>G</b>	GAGE OR GAUGE GALLON GALVANIZED GRAVITY BACKDRAFT DAMPER GAS DUCT HEATER GALLONS PER DAY GALLONS PER HOUR GALLONS PER MINUTE GALLONS PER USE GAS UNIT HEATER GREASE WASTE	<b>H</b>	HOSE BIB HAND-OFF-AUTOMATIC SWITCH HORSEPOWER HEAT PUMP UNIT HOUR HOT WATER PUMP HOT WATER SUPPLY HOT WATER RETURN HEAT EXCHANGER	<b>I</b>	INSIDE DIAMETER INVERT ELEVATION INCHES WATER GAUGE INVERT	<b>J</b>		<b>C</b>	CELSIUS CONDENSATE DRAIN LINE CUBIC FEET PER HOUR CUBIC FEET PER MINUTE CHILLER CHILLED WATER PUMP CHILLED WATER SUPPLY CHILLED WATER RETURN CONTINUOUS INSULATION CEILING CENTIMETERS CONCRETE MASONRY UNIT CLEANOUT COLUMN CONNECT CONTINUED CONTROL PANEL CUBIC FEET COMPUTER ROOM UNIT COOLING TOWER CABINET UNIT HEATER CONSTANT VOLUME CONDENSER WATER PUMP CONDENSER WATER RETURN CONDENSER WATER SUPPLY	<b>D</b>	DUCTLESS SPLIT INDOOR UNIT DRY BULB DECIBELS DUCTLESS SPLIT OUTDOOR UNIT DIRECT DIGITAL CONTROL DEGREES DIAMETER DOWN DRAWING DIRECT EXPANSION	<b>M</b>	MAKE-UP AIR UNIT MAXIMUM BTU PER HOUR (THOUSAND) MECHANICAL CONTRACTOR MINIMUM CIRCUIT AMPS MOTOR CONTROL CENTER MOTORIZED DAMPER MECHANICAL MEZZANINE MINIMUM MISCELLANEOUS METERS MILLIMETERS MAXIMUM OVER-CURRENT PROTECTION MAXIMUM OVER-CURRENT PROTECTION MOUNTED MAKE-UP WATER NOISE CRITERIA NORMALLY CLOSED NEGATIVE NOT IN CONTRACT NUMBER NORMALLY OPEN NOMINAL NOT TO SCALE	<b>T</b>	TRANSFER AIR DUCT TEMPERATURE TOP OF DUCT TOP OF FAN TOP OF LOUVER TOP OF STRUCTURE TOTAL TOTAL PRESSURE / TRAP PRIMER TOTAL STATIC PRESSURE THERMOSTAT TILT-UP PANEL TYPICAL TEMPERATURE & PRESSURE	<b>UNLESS OTHERWISE NOTED UNDERFLOOR UNDERGROUND</b>	<b>VOLT / VENT VARIABLE AIR VOLUME VELOCITY VARIABLE FREQUENCY DRIVE VOLUME VENT THROUGH ROOF</b>	<b>WASTE WET BULB WALL CLEANOUT WATER GAUGE WALL HYDRANT WATER HAMPER ARRESTOR WALL OPENING WATER PRESSURE DROP WASTE STACK WATER SOURCE HEAT PUMP WITH TRAP PRIMER WATTS WITH WITH OUT</b>	<b>TRANSITION, CONCENTRIC</b>	<b>TRANSITION, ECCENTRIC</b>	<b>RECTANGULAR TO ROUND TRANSITION</b>	<b>VOLUME DAMPER</b>	<b>VERTICAL DUCT RISE</b>	<b>VERTICAL DUCT DROP</b>	<b>RETURN AIR REFRIGERATED AIR DRYER ROOF DRAIN REFERENCE RELIEF AIR RELATIVE HUMIDITY REHEAT COIL ROOF INTAKE REFRIGERANT LIQUID/RAIN LEADER ROOF OPENING REVOLUTIONS PER MINUTE REFRIGERANT SUCTION</b>	<b>SUPPLY AIR SCHEDULE SMOKE DETECTOR SHOWER SMOKE DAMPER SEASONAL ENERGY EFFICIENCY RATIO SENSIBLE SQUARE FEET SUPPLY FAN STATIC PRESSURE (INCHES OF WATER) SPECIFICATION SHUT-OFF VALVE SECONDARY ROOF DRAIN STAINLESS STEEL/SOIL STACK STORM DRAIN STEEL</b>	<b>TRANSFER AIR DUCT TEMPERATURE TOP OF DUCT TOP OF FAN TOP OF LOUVER TOP OF STRUCTURE TOTAL TOTAL PRESSURE / TRAP PRIMER TOTAL STATIC PRESSURE THERMOSTAT TILT-UP PANEL TYPICAL TEMPERATURE &amp; PRESSURE</b>	<b>UNLESS OTHERWISE NOTED UNDERFLOOR UNDERGROUND</b>	<b>VOLT / VENT VARIABLE AIR VOLUME VELOCITY VARIABLE FREQUENCY DRIVE VOLUME VENT THROUGH ROOF</b>	<b>WASTE WET BULB WALL CLEANOUT WATER GAUGE WALL HYDRANT WATER HAMPER ARRESTOR WALL OPENING WATER PRESSURE DROP WASTE STACK WATER SOURCE HEAT PUMP WITH TRAP PRIMER WATTS WITH WITH OUT</b>	<b>TRANSITION, CONCENTRIC</b>	<b>TRANSITION, ECCENTRIC</b>	<b>RECTANGULAR TO ROUND TRANSITION</b>	<b>VOLUME DAMPER</b>	<b>VERTICAL DUCT RISE</b>	<b>VERTICAL DUCT DROP</b>

# DESIGN CONDITIONS

LOCATION *	LATITUDE	ELEVATION	WINTER (99.6%)		SUMMER (0.4%)			CLIMATE ZONE
			OUTDOOR (Fdb)	INDOOR	OUTDOOR (Fwb)	OUTDOOR (Fwb)	INDOOR	
TALAHASSEE, FL	30.39 N	69 FT	25.7	88F ± 2F	96	76.5	75F ± 2F	2A

\* NEAREST AVAILABLE WEATHER STATION DATA: FULTON CO ARPT BROW, GA

## APPLICABLE BUILDING CODES

- FLORIDA BUILDING CODE 2023
- FLORIDA MECHANICAL CODE 2023
- NATIONAL ELECTRIC CODE - NFPA 70 2020
- FLORIDA ENERGY CONSERVATION CODE 2023
- FLORIDA PLUMBING CODE 2023
- FLORIDA EXISTING BUILDING CODE 2023

## DESIGN ASSUMPTIONS

- RENOVATION TO THE EXISTING SPACE DOES NOT ALTER THE ENVELOPE. EXISTING BUILDING MEETS MIN. ENERGY CODE REQUIREMENTS.
- EXISTING FENESTRATION METAL FRAMING WITH THERMAL BREAK U=0.6 AND SHGC (PROJECTION FACTOR ≤ 0.20) 0.5.
- ROOF R-19 BATT EXISTING, R-19 + R-11 LS NEW ADDITION.
- WALLS R-13 BATT EXISTING, R-13 + 6.5 CI NEW ADDITION.
- UNHEATED SLAB ON GRADE.
- OPAQUE DOOR SWINGING TYPE U=0.61; ENTRANCE DOOR GLAZING U=0.83
- CONTINUOUS AIR, WATER, AND THERMAL BARRIER EXISTS FOR THE BUILDING ENVELOPE.
- STEADY STATE CONDITIONS.
- ALL EXISTING WALL, ROOF, AND GENERAL ENVELOPE PENETRATIONS WILL MAINTAIN AIR BARRIER.
- EXISTING HVAC HAVE SUFFICIENT CAPACITY TO CONDITION THE SPACE. NEW EQUIPMENT WILL BE SUPPLEMENTAL TO EXISTING.
- EXISTING SANCTUARY WILL REMAIN. NEW ADDITIONS WILL EXTEND EXISTING SANCTUARY'S STAGE AREA.
- EXISTING SANCTUARY'S VENTILATION RATE WILL REMAIN UNCHANGED.
- EXISTING EXPOSED DUCTS CAN BE RELOCATED AS SHOWN.

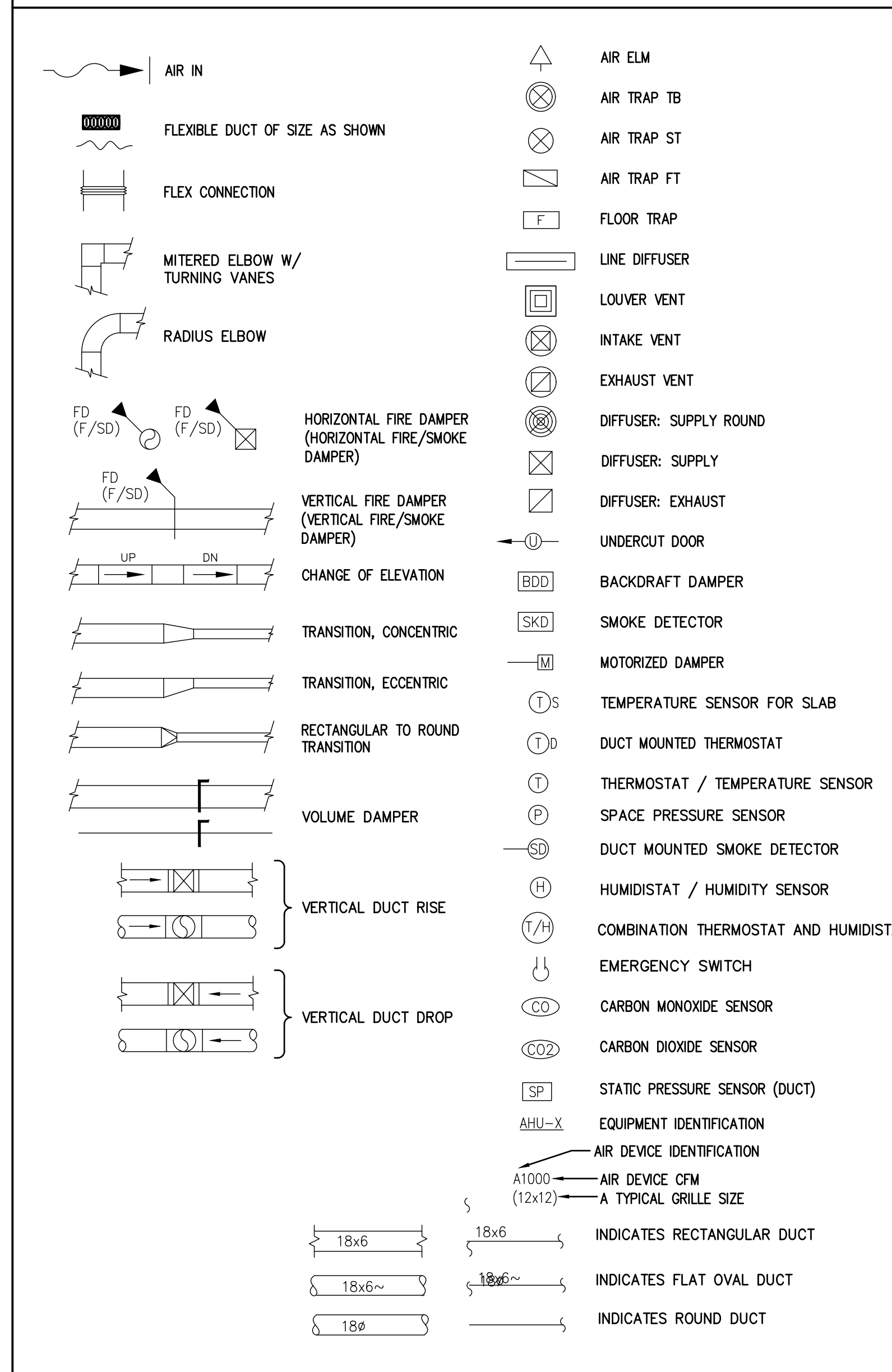
## PROJECT SCOPE

THE PROJECT WILL BE THEIR RENOVATION OF EXISTING SPACE AND AN ADDITION THAT WILL EXTEND THE STAGE OF THE EXISTING SANCTUARY.

THE EXISTING SANCTUARY WILL REMAIN AND EXISTING DUCT ABOVE NEW LOBBY WILL BE RELOCATED.

A NEW HVAC UNIT (AND DUCT) WILL BE PROVIDED FOR THE NEW LOBBY. A NEW HVAC UNIT (AND DUCT) WILL BE PROVIDED FOR THE NEW ADDITION (STAGE), AND A NEW HVAC UNIT (AND DUCT) WILL BE PROVIDED FOR NEW THE 2ND FLOOR CLASSROOMS. EXISTING HVAC CONDENSING UNITS WILL BE RELOCATED FOR THE NEW ADDITIONS.

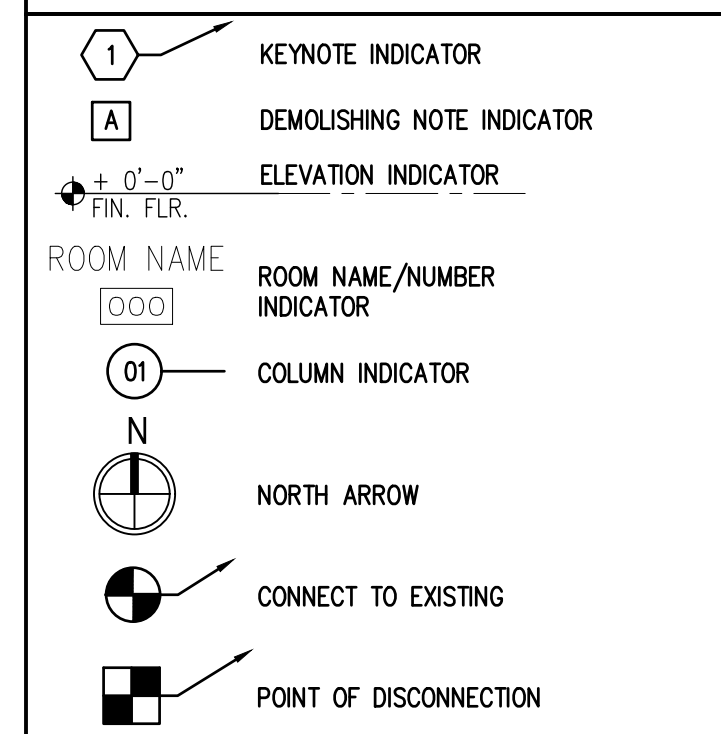
# HVAC SYMBOL LEGEND



# MECHANICAL SHEET INDEX

NO.	DESCRIPTION
M0.1	MECHANICAL LEGEND, NOTES AND SYMBOLS
M0.2	MECHANICAL VENTILATION AND AIR BALANCE
M2.1	MECHANICAL FIRST FLOOR PLAN
M2.1	MECHANICAL SECOND FLOOR PLAN
M5.1	MECHANICAL DETAILS
M6.1	MECHANICAL SCHEDULES
M7.1	MECHANICAL CONTROLS
M9.1	MECHANICAL SPECIFICATIONS

# SYMBOLS LEGEND



# MECHANICAL NOTES

- PROVIDE ALL MATERIALS AND EQUIPMENT AND PERFORM ALL LABOR REQUIRED TO INSTALL COMPLETE AND OPERABLE MECHANICAL SYSTEMS AS INDICATED ON THE DRAWINGS, AS SPECIFIED AND AS REQUIRED BY CODE.
- CONTRACT DOCUMENT DRAWINGS FOR MECHANICAL WORK(S) ARE DIAGRAMMATIC AND ARE INTENDED TO CONVEY SCOPE AND GENERAL ARRANGEMENT ONLY.
- INSTALL ALL MECHANICAL EQUIPMENT AND APPURTENANCES IN ACCORDANCE WITH MANUFACTURERS' RECOMMENDATIONS, CONTRACT DOCUMENTS, AND APPLICABLE CODES AND REGULATIONS.
- PROVIDE VIBRATION ISOLATION FOR ALL MECHANICAL EQUIPMENT TO PREVENT TRANSMISSION OF VIBRATION TO BUILDING STRUCTURE.
- COORDINATE CONSTRUCTION OF ALL MECHANICAL WORK WITH ARCHITECTURAL, STRUCTURAL, CIVIL, ELECTRICAL WORK, ETC., SHOWN ON OTHER CONTRACT DOCUMENT DRAWINGS.
- ALL TESTS SHALL BE COMPLETED BEFORE ANY MECHANICAL EQUIPMENT OR PIPING INSULATION IS APPLIED.
- LOCATE ALL TEMPERATURE, PRESSURE, AND FLOW MEASURING DEVICES IN ACCESSIBLE LOCATIONS WITH STRAIGHT SECTION OF PIPE OR DUCT UP AND DOWNSTREAM AS RECOMMENDED BY THE MANUFACTURER FOR GOOD ACCURACY.
- WHERE TWO OR MORE ITEMS OF THE SAME TYPE OF EQUIPMENT ARE REQUIRED, THE PRODUCT OF ONE MANUFACTURER SHALL BE USED.
- REINFORCEMENT, DETAILING, AND PLACEMENT OF CONCRETE SHALL CONFORM TO ASTM 315 AND ACI 318. CONCRETE SHALL CONFORM TO ASTM C94. CONCRETE WORK SHALL CONFORM TO ACI 318, PART ENTITLED "CONSTRUCTION REQUIREMENTS." COMPRESSIVE STRENGTH IN 28 DAYS SHALL BE 3,000 PSI. TOTAL AIR CONTENT OF EXTERIOR CONCRETE SHALL BE BETWEEN 5 AND 7 PER-CENT BY VOLUME. SLUMP SHALL BE BETWEEN 3 AND 4 INCHES. CONCRETE SHALL BE CURED FOR 7 DAYS AFTER PLACEMENT.
- WHERE APPLICABLE THE MECHANICAL SYSTEMS SHALL BE COMMISSIONED AS REQUIRED BY THE ENERGY CODE; REFER TO C408 OF THE ENERGY CODE FOR FURTHER CLARIFICATION. ALL REQUIRED DOCUMENTS OF THE ABOVE SECTION SHALL BE PROVIDED TO THE OWNER WITHIN 90 DAYS OF CERTIFICATE OF OCCUPANCY.
- COORDINATE ALL EQUIPMENT CONNECTIONS WITH MANUFACTURERS' CERTIFIED DRAWINGS. COORDINATE AND PROVIDE ALL DUCT AND PIPING TENSIONS REQUIRED FOR FINAL EQUIPMENT CONNECTIONS TO FURNISHED EQUIPMENT. FIELD VERIFY AND COORDINATE ALL DUCT AND PIPING DIMENSIONS BEFORE FABRICATION.
- ALL CONTROL WIRE AND CONDUIT SHALL COMPLY WITH THE NATIONAL ELECTRIC CODE AND ELECTRICAL SPECIFICATION.
- CONCRETE HOUSEKEEPING PADS TO SUIT MECHANICAL EQUIPMENT SHALL BE SIZED AND LOCATED BY THE MECHANICAL CONTRACTOR. MINIMUM CONCRETE PAD THICKNESS SHALL BE 6 INCHES. PAD SHALL EXTEND BEYOND THE EQUIPMENT A MINIMUM OF 6 INCHES ON EACH SIDE. CONCRETE HOUSEKEEPING PADS SHALL BE PROVIDED BY THE GENERAL CONTRACTOR. IT SHALL BE THE RESPONSIBILITY OF THE MECHANICAL CONTRACTOR TO COORDINATE SIZE AND LOCATION OF CONCRETE HOUSEKEEPING PADS WITH GENERAL CONTRACTOR.
- WHEN MECHANICAL WORK IS SUB-CRATED, IT SHALL BE THE MECHANICAL CONTRACTOR'S RESPONSIBILITY TO COORDINATE SUBCONTRACTORS AND THE ASSOCIATED CONTRACTS. WHEN DISCREPANCIES ARISE PERTAINING TO WHICH CONTRACTOR PROVIDES A PARTICULAR ITEM OF THE MECHANICAL CONTRACT OR WHICH CONTRACTOR PROVIDES FINAL CONNECTIONS FOR A PARTICULAR ITEM OF THE MECHANICAL CONTRACT, IT SHALL BE BROUGHT TO THE ATTENTION OF THE MECHANICAL CONTRACTOR, WHOSE DECISION SHALL BE FINAL.
- THE LOCATIONS OF ALL ITEMS SHOWN ON THE DRAWINGS OR CALLED FOR IN THE SPECIFICATIONS THAT ARE NOT IDENTIFIED BY DIMENSIONS ARE APPROXIMATE ONLY. THE EXACT LOCATIONS NECESSARY TO SECURE THE BEST CONDITIONS AND RESULTS MUST BE DETERMINED BY THE PROJECT SITE CONDITIONS AND SHALL HAVE THE APPROVAL OF THE ENGINEER BEFORE BEING INSTALLED. DO NOT SCALE DRAWINGS.
- ALL MISCELLANEOUS STEEL REQUIRED TO ENSURE PROPER INSTALLATION AND AS SHOWN IN DETAILS FOR PIPING, DUCTWORK, AND EQUIPMENT (UNLESS OTHERWISE NOTED) SHALL BE FURNISHED AND INSTALLED BY THE MECHANICAL CONTRACTOR.
- PROVIDE AND INSTALL ACCESS PANELS FOR INSTALLATION IN WALLS AND CEILINGS, WHERE REQUIRED, TO SERVICE DAMPERS, VALVES, SMOKE DETECTORS, AND OTHER CONCEALED MECHANICAL EQUIPMENT.
- ALL EQUIPMENT, PIPING, DUCTWORK, ETC., SHALL BE SUPPORTED AS DETAILED, SPECIFIED, AND REQUIRED TO PROVIDE A VIBRATION FREE INSTALLATION.
- ALL DUCTWORK, PIPING AND EQUIPMENT SUPPORTED FROM STRUCTURAL SHALL BE COORDINATED WITH GENERAL CONTRACTOR. ALL ATTACHMENTS TO BAR JOISTS, TRUSSES, OR JOIST GRIDDERS SHALL BE AT PANEL POINTS. PROVIDE BEAM CLAMPS MEETING MSS STANDARDS. WELDING TO STRUCTURAL MEMBERS SHALL NOT BE PERMITTED.
- MECHANICAL EQUIPMENT, DUCTWORK, AND PIPING SHALL NOT BE SUPPORTED FROM THE DECK.
- LOCATIONS AND SIZES OF ALL FLOOR, WALL, AND ROOF OPENINGS SHALL BE COORDINATED WITH ALL OTHER TRADES INVOLVED.
- ALL AIR CONDITIONING CONDENSATE DRAIN LINES FROM EACH AIR HANDLING UNIT AND ROOFTOP UNIT SHALL BE PIPED FULL SIZE OF THE UNIT DRAIN OUTLET (OR AS SHOWN ON PLANS), WITH "T" TRAP. SEE DETAILS SHOWN ON THE DRAWINGS OR THE CONTRACT SPECIFICATIONS FOR DEPTH OF AIR CONDITIONING CONDENSATE TRAP.
- REFER TO TYPICAL DETAILS FOR DUCTWORK, PIPING, AND EQUIPMENT INSTALLATION.
- IF DUCTWORK SIZE IS NOT SHOWN, PROVIDE SIZING ACCORDING TO EQUAL FRICTION METHOD: SUPPLY 0.10"SP WG/100 EQ.FT. AND RETURN 0.05"SP WG/100 EQ.FT.
- PROVIDE BLADE SEALS FOR ALL DAMPERS WHETHER THEY ARE GRAVITY BACKDRAFT TYPE OR MOTOR OPERATED TYPE.
- CAULK (MOISTURE & AIR TIGHT) ALL PENETRATIONS THRU EXTERIOR WALLS.
- ALL INTERIOR SUPPLY/RETURN DUCT SHALL HAVE MIN R-6 INSULATION, HAVE ASJ, AND MEET UL REQUIREMENTS.
- ALL AIR SYSTEMS SHALL BE TESTED AND BALANCED IN ACCORDANCE WITH NEBB, OR AABC, NATIONAL STANDARD. A TEST AND BALANCE REPORT SHALL BE PROVIDED TO THE ENGINEER AND OWNER.
- PROVIDE AIR TURNING VANES IN ALL 90° RECTANGULAR DUCT ELBOWS.

# M. TODD ALBRITTON ARCHITECT

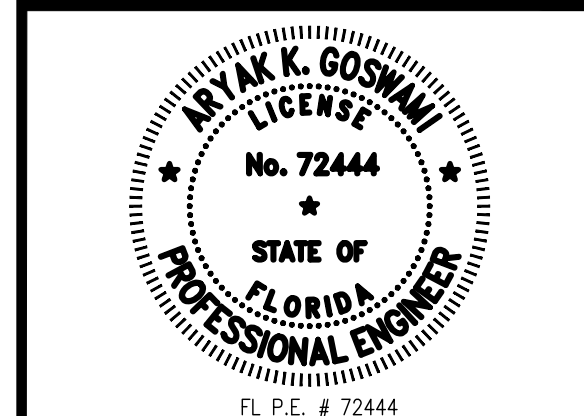
202 EAST MAIN STREET  
THOMASTON, GEORGIA  
30286  
PH 770-550-3275  
mtoddalbrintonarchitect@gmail.com

COPYRIGHT 2025 GOSWAMI ENGI., LLC ALL RIGHTS RESERVED. THESE DRAWINGS AND SPECIFICATIONS ARE INSTRUMENTS OF SERVICE AND SHALL REMAIN THE PROPERTY OF GOSWAMI ENGI., LLC. WHETHER THE PROJECT FOR WHICH THEY WERE PREPARED IS EXECUTED OR NOT. THEY ARE NOT TO BE USED IN ANY MANNER ON OTHER PROJECTS OR EXTENSIONS TO THIS PROJECT EXCEPT BY THE AGREEMENT IN WRITING AND WITH THE APPROPRIATE PERMISSION OF GOSWAMI ENGI., LLC. REPRODUCTIONS OF THESE DRAWINGS WITHOUT THE WRITTEN CONSENT OF GOSWAMI ENGI., LLC IS PROHIBITED.



12179 endersleigh court | jacksonville, fl 32258  
www.goswamiengineering.com  
904.337.9953 | info@goswamiengineering.com  
FL COA: 31627

GELLC PROJ. #25023



# NEW ADDITION & RENOVATIONS MORNINGSIDE CHURCH

1560 PEDRICK RD  
TALLAHASSEE,  
FLORIDA 32317

MARK	DATE	DESCRIPTION
A	09/21/2025	PERMIT ISSUE

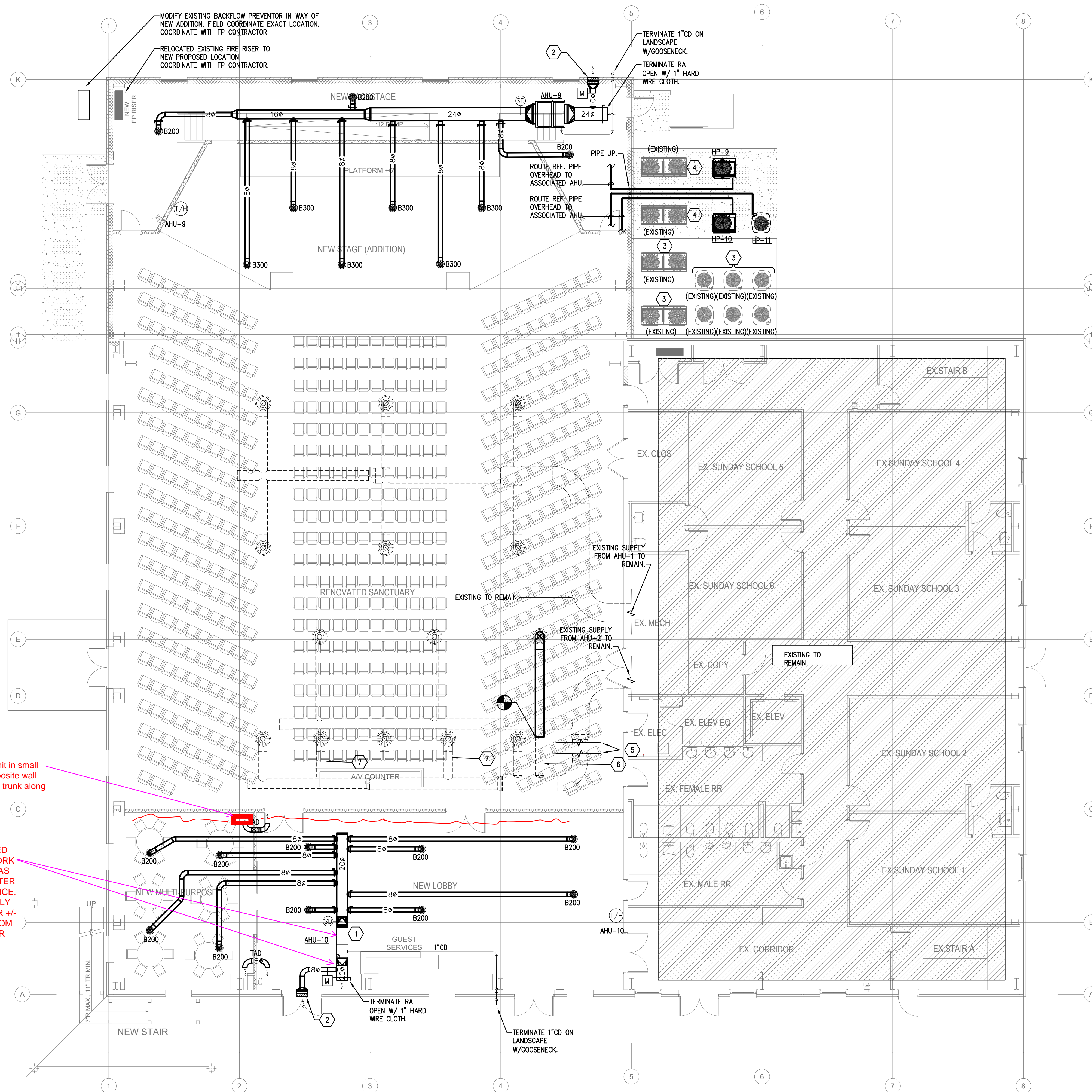
# MECHANICAL GENERAL LEGEND, NOTES, AND SYMBOLS

PROJECT DATE: 09/01/2025  
PROJECT NUMBER: --  
DRAWN BY: AKG

# M0.1

THIS ITEM HAS BEEN DIGITALLY SIGNED AND SEALED BY ARYAN GOSWAMI PE ON 10/20/2025  
PRINTED COPIES OF THIS DOCUMENT ARE NOT CONSIDERED SIGNED AND SEALED AND THE SIGNATURE MUST BE VERIFIED ON ANY ELECTRONIC COPIES.





maybe put unit in small closet on opposite wall and run main trunk along wall

WILL NEED TO REWORK LAYOUT AS PER BETTER CLEARANCE. HAVE ONLY 10' CLEAR +/- TO BOTTOM OF FLOOR JOIST

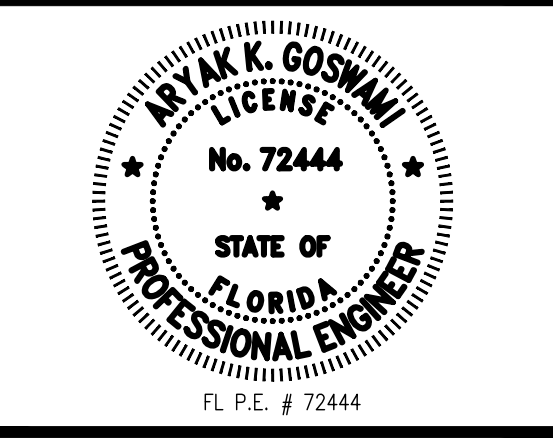
- GENERAL PLAN NOTES:**
1. THE PROJECT IS A RENOVATION OF AN EXISTING SPACE. THE CONTRACTOR SHALL FIELD VERIFY ALL EXISTING CONDITIONS AND EQUIPMENT. PLANS AND ASSOCIATED NOTATIONS PRESENTS BEST KNOWN LOCATIONS AND EQUIPMENT CONFIGURATIONS.
  2. THE DRAWINGS REPRESENT BEST KNOWN CONDITION AND LOCATIONS BASED ON GENERAL SITE OBSERVATIONS. ALL ITEMS ON DRAWINGS ARE TO BE VERIFIED BY CONTRACTOR AND FIELD COORDINATED ACCORDINGLY.
  3. EXISTING HVAC EQUIPMENT ARE TO REMAIN. MODIFY DUCT AS SHOWN ON PLANS.
  4. NEW DUCT WORK SHALL MATCH EXISTING DUCT TYPE.
  5. ALL CONCEALED DUCT SHALL HAVE MIN. R-6 INSULATION.
  6. THE CONTRACTOR TO MAKE FIELD ADJUSTMENTS NECESSARY TO FACILITATE INSTALLATION.
  7. PROVIDE PROTECTION FOR EXISTING CONDENSING UNITS DURING CONSTRUCTION.
- PLAN NOTES**
1. INSTALL AHU IN BETWEEN TRUSSES. RUN BRANCH DUCT THROUGH TRUSS WEBBING. MAKE FIELD MODIFICATIONS AS REQUIRED.
  2. PROVIDE INTAKE LOUVER W/ BIRD SCREEN EQUAL TO GREENHECK ESD-635 20x20x6.
  3. EXISTING CONDENSING UNIT TO REMAIN.
  4. FIELD COORDINATE AND RELOCATED EXISTING CONDENSING UNITS HP-1 AND QA-2 TO NEW PAD. COORDINATE WITH ELECTRICAL TO EXTEND ELECTRICAL SERVICE TO RELOCATED UNITS.
  5. MODIFY EXISTING DUCT:
    - 5.1. TRIM LENGTH OF DUCT IN BETWEEN BREAK LINES TO SHORTEN EXISTING DUCT.
    - 5.2. RECONNECT TO EXISTING SUPPLY DUCT TRUNK.
  6. RELOCATE EXISTING SUPPLY BRANCH (14 IN. Ø):
    - 6.1. REMOVE THE EXISTING 14 IN. Ø SUPPLY BRANCH FROM ITS CURRENT LOCATION (OPPOSITE THE NEW LOCATION SHOWN ON THE PLANS).
    - 6.2. CAP/PATCH THE OPENING AT THE MAIN SUPPLY TRUNK WHERE THE BRANCH WAS REMOVED; RESTORE INSULATION (IF APPLICABLE).
    - 6.3. INSTALL THE 14 IN. Ø SUPPLY BRANCH AT THE LOCATION INDICATED ON THE DRAWINGS; PROVIDE NEW TAKEOFF.
    - 6.4. EXTEND THE 14 IN. Ø BRANCH AS REQUIRED TO ALIGN WITH THE EXISTING DIFFUSERS; RECONNECT AND REUSE THE EXISTING ROUND SUPPLY DIFFUSER.
    - 6.5. SEAL ALL DUCT JOINTS AND SEAMS TO SMAENA SEAL CLASS A.
    - 6.6. PROVIDE SUPPORTS AND HANGERS IN ACCORDANCE WITH SMAENA REQUIREMENTS.
  7. RELOCATE EXISTING SUPPLY BRANCH (14 IN. Ø):
    - 7.1. REMOVE THE EXISTING 14 IN. Ø SUPPLY BRANCH FROM ITS CURRENT LOCATION (OPPOSITE THE NEW LOCATION SHOWN ON THE PLANS).
    - 7.2. CAP/PATCH THE OPENING AT THE MAIN SUPPLY TRUNK WHERE THE BRANCH WAS REMOVED; RESTORE INSULATION (IF APPLICABLE).
    - 7.3. INSTALL THE 14 IN. Ø SUPPLY BRANCH AT THE LOCATION INDICATED ON THE DRAWINGS; RECONNECT AND REUSE THE EXISTING ROUND SUPPLY DIFFUSER.
    - 7.4. SEAL ALL DUCT JOINTS AND SEAMS TO SMAENA SEAL CLASS A.
    - 7.5. PROVIDE SUPPORTS AND HANGERS IN ACCORDANCE WITH SMAENA REQUIREMENTS.

**M. TODD ALBRITTON**  
**ARCHITECT**  
 202 EAST MAIN STREET  
 THOMASTON, GEORGIA  
 30286  
 PH 770-550-3275  
 mtoddalbrittonarchitect@gmail.com

COPYRIGHT 2025 GOSWAMI ENGI., LLC ALL RIGHTS RESERVED. THESE DRAWINGS AND SPECIFICATIONS ARE INSTRUMENTS OF SERVICE AND SHALL REMAIN THE PROPERTY OF GOSWAMI ENGI., LLC. WHETHER THE PROJECT FOR WHICH THEY WERE PREPARED IS EXECUTED OR NOT. THEY ARE NOT TO BE USED IN ANY MANNER ON OTHER PROJECTS OR EXTENSIONS TO THIS PROJECT EXCEPT BY THE AGREEMENT IN WRITING AND WITH THE APPROPRIATE COMPENSATION TO GOSWAMI ENGI., LLC. REPRODUCTIONS OR MODIFICATIONS WITHOUT THE WRITTEN CONSENT OF GOSWAMI ENGI., LLC IS PROHIBITED.

**GOSWAMI ENGINEERING**  
 Your Engineer™  
 12179 endersleigh court | jacksonville, fl 32258  
 www.goswamiengineering.com  
 904.337.9953 | info@goswamiengineering.com  
 FL COA: 31627  
 GELLC PROJ. #25023

**PELLICANO CONSTRUCTION**



**NEW ADDITION & RENOVATIONS MORNINGSIDE CHURCH**  
 1560 PEDRICK RD  
 TALLAHASSEE, FLORIDA 32317

MARK	DATE	DESCRIPTION
A	09/21/2025	PERMIT ISSUE

**MECHANICAL FIRST FLOOR PLAN**

PROJECT DATE: 09/01/2025  
 PROJECT NUMBER: --  
 DRAWN BY: AKG

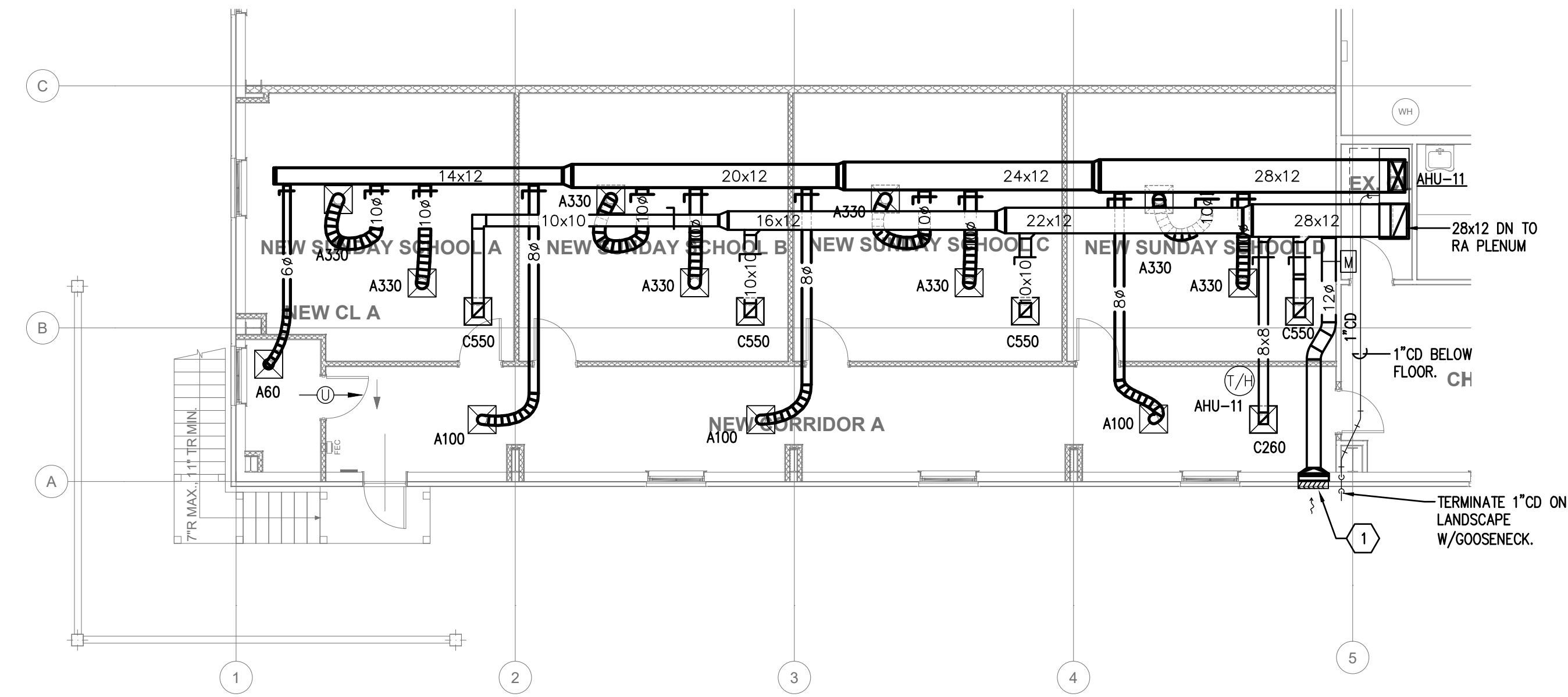
**M2.1**

**GENERAL PLAN NOTES:**

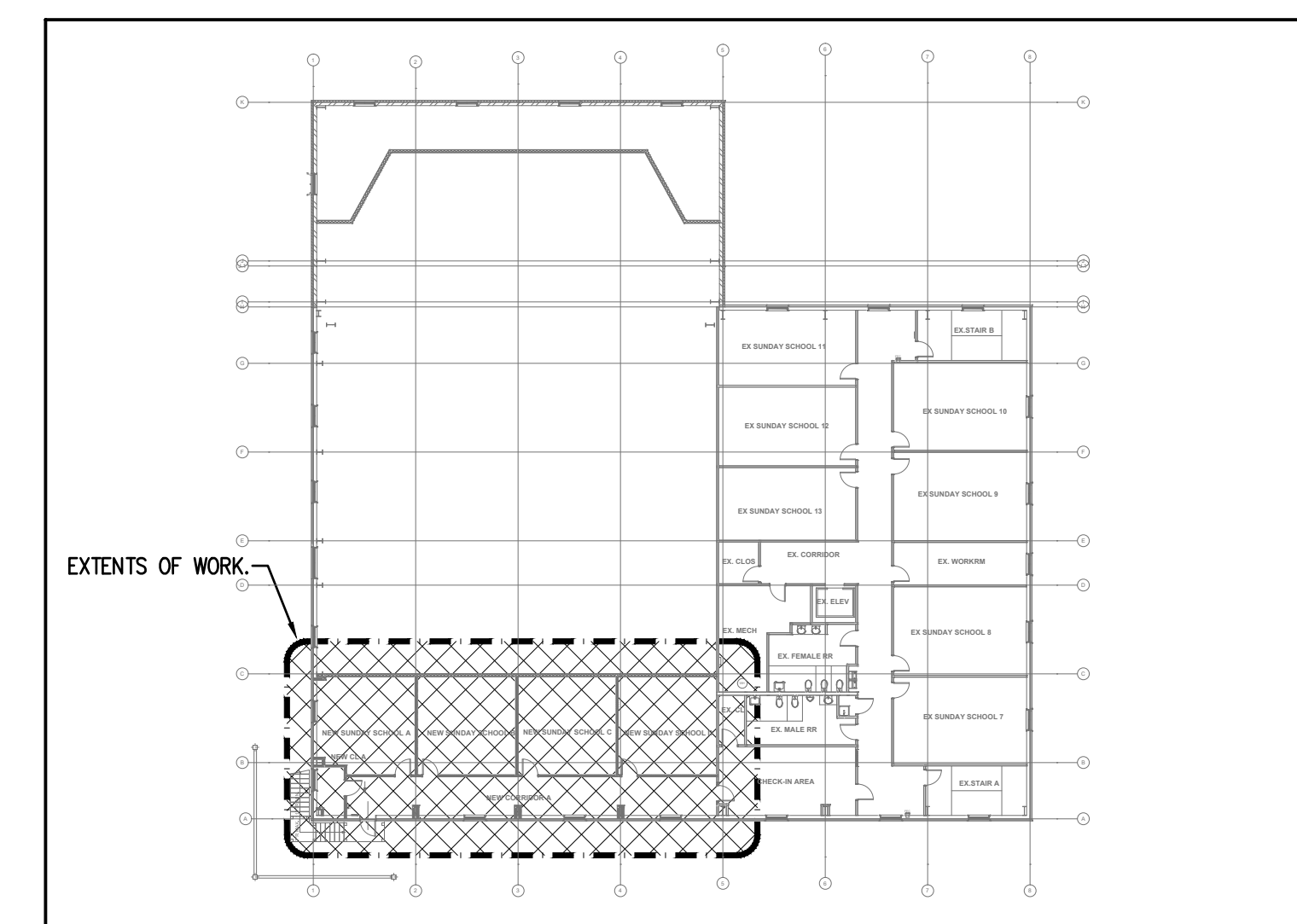
1. THE PROJECT IS A RENOVATION OF AN EXISTING SPACE. THE CONTRACTOR SHALL FIELD VERIFY ALL EXISTING CONDITIONS AND EQUIPMENT. PLANS AND ASSOCIATED NOTATIONS PRESENTS BEST KNOWN LOCATIONS AND EQUIPMENT CONFIGURATIONS.
2. THE DRAWINGS REPRESENT BEST KNOWN CONDITION AND LOCATIONS BASED ON GENERAL SITE OBSERVATIONS. ALL ITEMS ON DRAWINGS ARE TO BE VERIFIED BY CONTRACTOR AND FIELD COORDINATED ACCORDINGLY.
3. EXISTING HVAC EQUIPMENT ARE TO REMAIN. MODIFY DUCT AS SHOWN ON PLANS.
4. ALL CONCEALED DUCT SHALL HAVE MIN. R-6 INSULATION.
5. THE CONTRACTOR TO MAKE FIELD ADJUSTMENTS NECESSARY TO FACILITATE INSTALLATION.

# PLAN NOTES

1. PROVIDE INTAKE LOUVER W/ BIRD SCREEN EQUAL TO GREENHECK ESD-635 26x20x6.



**1 MECHANICAL SECOND FLOOR PLAN**  
**M2.2** Scale: 1/8" = 1'-0"



**KEY PLAN**  
 Scale: NTS

**M. TODD ALBRITTON**  
**ARCHITECT**

202 EAST MAIN STREET  
 THOMASTON, GEORGIA  
 30286  
 PH 770-550-3275  
 mtoddalbrittonarchitect@gmail.com

COPYRIGHT 2025 GOSWAMI ENGI., LLC ALL RIGHTS RESERVED. THESE DRAWINGS AND SPECIFICATIONS ARE INSTRUMENTS OF SERVICE AND SHALL REMAIN THE PROPERTY OF GOSWAMI ENGI., LLC. WHETHER THE PROJECT FOR WHICH THEY WERE PREPARED IS EXECUTED OR NOT. THEY ARE NOT TO BE USED IN ANY MANNER ON OTHER PROJECTS OR EXTENSIONS TO THIS PROJECT EXCEPT BY THE AGREEMENT IN WRITING AND WITH THE APPROPRIATE COMPENSATION TO GOSWAMI ENGI., LLC. REPRODUCTIONS OR REVISIONS WITHOUT THE WRITTEN CONSENT OF GOSWAMI ENGI., LLC IS PROHIBITED.

**GOSWAMI ENGINEERING**  
 Your Engineer™

12179 endersleigh court | jacksonville, fl 32258  
 www.goswamiengineering.com  
 904.337.9953 | info@goswamiengineering.com  
 FL COA: 31627  
 GELLC PROJ. #25023

**PELLICANO CONSTRUCTION**

**AK K. GOSWAMI**  
 LICENSE  
 No. 72444  
 STATE OF FLORIDA  
 PROFESSIONAL ENGINEER  
 FL P.E. # 72444

**NEW ADDITION & RENOVATIONS MORNINGSIDE CHURCH**

1560 PEDRICK RD  
 TALLAHASSEE, FLORIDA 32317

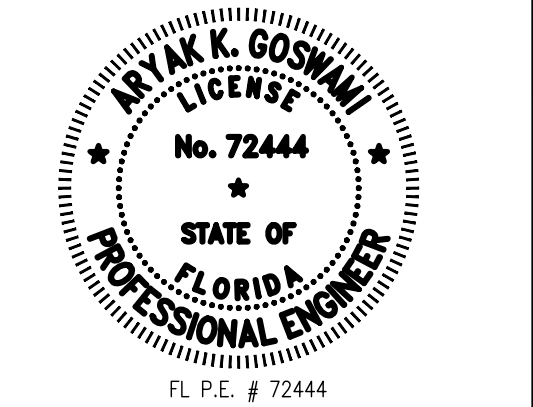
MARK	DATE	DESCRIPTION
A	09/21/2025	PERMIT ISSUE

**MECHANICAL SECOND FLOOR PLAN**

PROJECT DATE: 09/01/2025  
 PROJECT NUMBER: --  
 DRAWN BY: AKG

**M2.2**





NEW  
ADDITION &  
RENOVATIONS  
MORNINGSIDE  
CHURCH  
1560 PEDRICK RD  
TALLAHASSEE,  
FLORIDA 32317

MARK	DATE	DESCRIPTION
A	09/21/2025	PERMIT ISSUE

MECHANICAL  
SCHEDULES

PROJECT DATE: 09/01/2025

PROJECT NUMBER: --

DRAWN BY: AKG

M6.1

MARK	AREA SERVED	SPLIT SYSTEM HEAT PUMP SCHEDULE																		ACCESSORIES														
		AIR HANDLING UNIT										HEAT PUMP CONDENSING UNIT																						
		FAN				COOLING				ELECTRIC HEAT		AIR HANDLING UNIT		MARK	AMBIENT AIR TEMP °F (DB)	HEAP PUMP CAPACITY	NOMINAL TONS	COMPRESSOR TYPE	VOLTS/PH	MCA	MOCP	WEIGHT	MANUFACTURER	MODEL	SEER / EER	HPSF / COP								
TOTAL AIR (CFM)	OUTSIDE AIR (CFM)	EXT. S.P. (IN. W.G)	(HP)	ENT. AIR DB (°F)	WB (°F)	LVG AIR DB (°F)	WB (°F)	COIL TOTAL (MBH)	COIL SENS. (MBH)	EAT DB (°F)	LAT DB (°F)	KW	MCA														MOCP	VOLT/PH	WEIGHT	MANUFACTURER	MODEL NUMBER	MARK	AMBIENT AIR TEMP °F (DB)	HEAP PUMP CAPACITY
AHU-9	NEW STAGE	2,400	270	0.75	1	78.0	64.8	54.9	54.1	78.0	61.9	60.0	68.0	5.0	12.0	15.0	460/30	400	TRANE	TWE072K4BAA	HP-9	95	67	6	DUAL SCROLL	460/30	17	20	400	TRANE	TWA072K4DAA	14.8 / 11.5	9.0 / 3.4	1,2,3,4,5,6,7,8,9
AHU-10	NEW LOBBY	2,000	365	0.75	0.75	79.0	65.8	54.7	54.1	55.7	41.4	60.0	68.0	--	9.0	15.0	208/10	200	TRANE	STAMSD07AC51	HP-10	95	52	5	SCROLL	460/30	11	15	300	TRANE	5TWA4060A4	14.3 / 11.7	9.5 / 4.1	1,2,3,4,5,6,7,8
AHU-11	NEW CLASSROOMS	3,000	540	1	1.87 BHP	78.0	63.2	55.8	54.6	95.1	82.4	60.0	68.0	5.0	12.0	15.0	460/30	400	TRANE	TWE090K4BAA	HP-11	95	90.6	7.5	DUAL SCROLL	460/30	18	20	400	TRANE	TWA90K4DAA	14.8 / 11.5	9.0 / 3.4	1,2,3,4,5,6,7,8,9

**REMARKS**  
A FAN HP IS ESTIMATED FOR ELECTRICAL SERVICING REQUIREMENTS ONLY. MANUFACTURER/CONTRACTOR SHALL DETERMINE FAN HP BASED ON SCHEDULED EXT. S.P., MANUFACTURER'S ESTIMATED INTERNAL S.P., AND CFM.  
B REFRIGERANT TYPE R-454 OR EQUIVALENT.  
C PROVIDE AUXILIARY DRAIN PAN UNDER UNIT SIZED PER STANDARD BUILDING CODE.  
D UNIT SENS. AND UNIT TOTAL MBH ARE NET UNIT CAPACITIES & DO NOT REPRESENT COIL CAPACITIES ONLY. NET CAPACITIES SHALL BE MET & SHALL INCLUDE BOTH THE MECHANICAL & THE THERMAL ENERGY TRANSFERRED TO THE AIR STREAM VIA THE FAN/MOTOR COMBINATION.  
E UNIT CAPACITY SHALL BE MET REGARDLESS OF MODEL NUMBER REFERENCED.  
F SIZE REFRIGERANT LINE PER MANUFACTURE'S RECOMMENDATIONS

**ACCESSORIES**  
1 PROVIDE NEMA 1 DISCONNECT FOR AHU AND PROVIDE NEMA 3R DISCONNECT FOR HP. MECHANICAL CONTRACTOR TO PROVIDE DISCONNECTS AND ELECTRICAL CONTRACTOR TO INSTALL. MECHANICAL CONTRACTOR TO COORDINATE.  
2 PROVIDE INVERTER CONTROLLED SCROLL COMPRESSORS.  
3 PROVIDE AHU WITH VARIABLE SPEED ECM MOTOR, AND ELECTRONIC EXPANSION VALVE.  
4 PROVIDE MERV 11 FILTERS FOR AHU  
5 PROVIDE MOTORIZED OUTDOOR AIR DAMPERS WITH BLADE SEALS AS SHOWN ON PLANS. DAMPER SHALL BE INTERLOCKED WITH AHU.  
6 AHU SHALL BE HAVE BOTH VERTICAL AND HORIZONTAL INSTALLATION CAPABILITIES.  
7 PROVIDE SOFT START AND LOW AMBIENT KIT FOR HEAT PUMP DOWN TO 15°F  
8 PROVIDE DUAL REFRIGERANT CIRCUIT, AND 2 SPEED CONTROLS WITH VFD.



**Project Information**  
Energy Code: 90.1 (2019) Standard  
Project Title: Morning Side Church Renovation and Addition to  
Location: Athens, Georgia  
Climate Zone: 3a  
Project Type: Addition

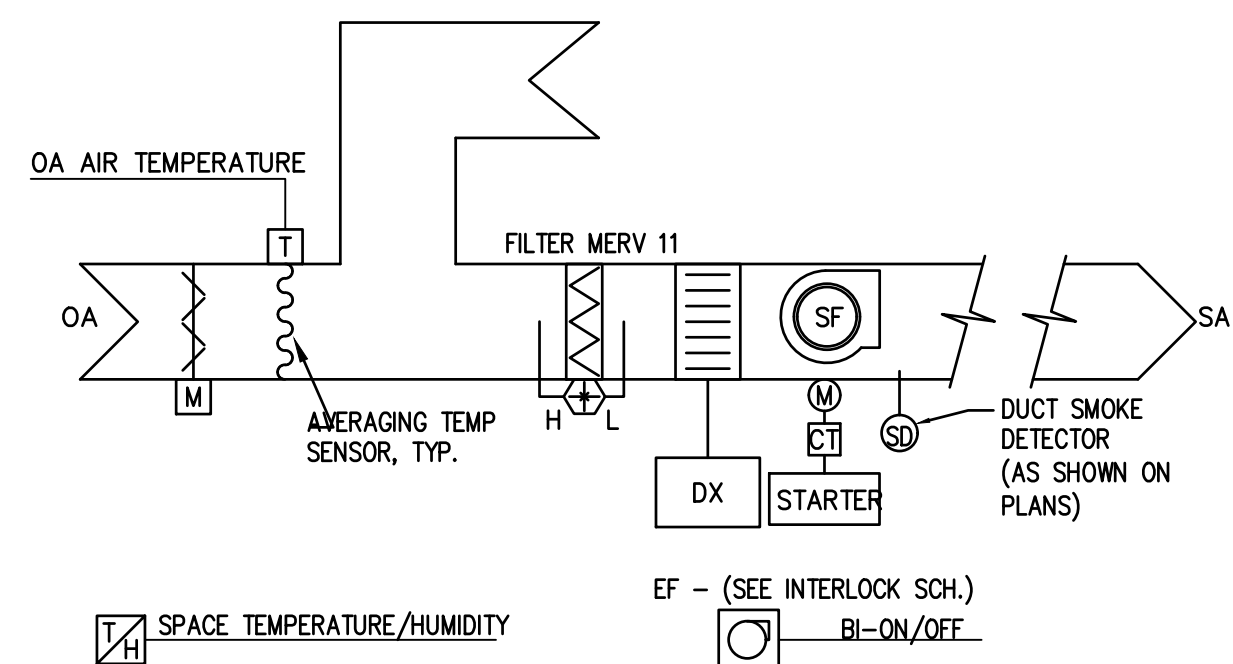
Construction Site: 1560 Pedrick Road, Tallahassee, Florida 32317  
Owner/Agent: \_\_\_\_\_  
Designer/Contractor: \_\_\_\_\_

**Mechanical Systems List**  
**Quantity System Type & Description**  
1 AHU/HP-9 (Single Zone):  
Split System Heat Pump  
Heating Mode: Capacity = 67 kBtu/h, Proposed Efficiency = 3.40 COP, Required Efficiency = 3.30 COP  
Cooling Mode: Capacity = 74 kBtu/h, Air Economizer  
Proposed Efficiency = 11.40 EER, Required Efficiency = 11.00 EER  
Proposed Part Load Efficiency = 14.80 IEER, Required Part Load Efficiency = 14.10 IEER  
Fan System: FAN SYSTEM 1 -- Compliance (Motor nameplate HP and fan efficiency method) : Passes  
Fans:  
FAN 1 Supply, Constant Volume, 2400 CFM, 0.8 motor nameplate hp, 1.00 fan energy index, fan exception: Single fan < 1 HP or < 0.89 kW  
1 AHU/HP-10 (Single Zone):  
Split System Heat Pump  
Heating Mode: Capacity = 52 kBtu/h, Proposed Efficiency = 9.50 HSPF2, Required Efficiency = 7.50 HSPF2  
Cooling Mode: Capacity = 55 kBtu/h, Air Economizer  
Proposed Efficiency = 14.30 SEER2, Required Efficiency = 14.30 SEER2  
Proposed Part Load Efficiency = 14.80, Required Part Load Efficiency = 0.00  
Fan System: FAN SYSTEM 2 -- Compliance (Motor nameplate HP and fan efficiency method) : Passes  
Fans:  
FAN 2 Supply, Constant Volume, 2000 CFM, 0.8 motor nameplate hp, 1.00 fan energy index  
1 AHU/HP-11 (Single Zone):  
Split System Heat Pump  
Heating Mode: Capacity = 90 kBtu/h, Proposed Efficiency = 3.40 COP, Required Efficiency = 3.30 COP  
Cooling Mode: Capacity = 91 kBtu/h, Air Economizer  
Proposed Efficiency = 11.50 EER, Required Efficiency = 11.00 EER  
Proposed Part Load Efficiency = 14.80 IEER, Required Part Load Efficiency = 14.10 IEER  
Fan System: FAN SYSTEM 3 -- Compliance (Motor nameplate HP and fan efficiency method) : Passes  
Fans:  
FAN 3 Supply, Constant Volume, 3000 CFM, 2.0 motor nameplate hp, 1.00 fan energy index

**Mechanical Compliance Statement**  
Compliance Statement: The proposed mechanical design represented in this document is consistent with the building plans, specifications, and other calculations submitted with this permit application. The proposed mechanical systems have been designed to meet the 90.1 (2019) Standard requirements in COMcheck Version COMcheckWeb and to comply with any applicable mandatory requirements listed in the Inspection Checklist.

Aryak K. Goswami P.E.  
Name - Title \_\_\_\_\_  
Signature \_\_\_\_\_  
Date: 9/23/2025

## DX-SPLIT HP WITH ELECT HEAT



POINTS LIST FOR AHU, AND CU				
POINT DESCRIPTION	PHYSICAL POINTS			
	ANALOG INPUT	BINARY INPUT	ANALOG OUTPUT	BINARY OUTPUT
OA DAMPER	X		X	
SPACE TEMPERATURE	X			
SPACE HUMIDITY	X			
PHYSICAL POINTS TOTAL	3		1	

NOTES:  
1. --

**SEQUENCE OF OPERATIONS:**  
THE SYSTEM SHALL BE MONITORED, ENABLED/DISABLED THROUGH MANUFACTURE'S STAND ALONE UNIT CONTROLS AND INTERLOCKS AND SHALL START/STOP THE UNIT AUTOMATICALLY.

THE INTERLOCKED FAN(S) SHALL RUN CONTINUOUSLY WHILE AHU IS ENERGIZED.

**COOLING MODE:**  
THE UNIT(S) SHALL COME ON LINE AND PROVIDE COOLING BASED ON SPACE COOLING SET-POINT TEMPERATURE OF 75F (ADJ.). WHEN UNOCCUPIED COOLING SET BACK TO BE 85F, AND OA DAMPER TO BE SHUT.

**HEATING MODE:**  
THE UNIT(S) SHALL COME ON LINE AND PROVIDE HEATING BASED ON SPACE HEATING SET-POINT TEMPERATURE OF 70F (ADJ.). IF NEEDED SET-POINT CANNOT BE MAINTAINED THE AUXILIARY ELECTRIC HEATING SHALL BE ENERGIZED. WHEN UNOCCUPIED HEATING SET BACK TO BE 55F, AND OA DAMPER TO BE SHUT.

**DEHUMIDIFICATION MODE:**  
THE UNIT SHALL BE IN DEHUMIDIFICATION MODE IF SPACE HUMIDITY IS ABOVE 60% RH. THE UNIT SHALL ENERGIZE COMPRESSORS AND SHALL DEHUMIDIFY THE SPACE BELOW 50% RH.

**OCCUPIED/UN-OCCUPIED SCHEDULED CONTROL:**  
THE SYSTEMS SHALL BE CONTROLLED BY AN OCCUPANCY SCHEDULE.  
THERMOSTAT SHALL BE CONTROLLED BY AN OCCUPANCY SCHEDULE PER BUILDING LEVEL CONTROLLER. DURING UN-OCCUPIED MODE, AS DETERMINED BY OCCUPANCY SCHEDULE, THE OUTSIDE AIR DAMPER SHALL MODULATE TO 10% OF THE SUPPLY AIR CAPACITY AND PROVIDE MINIMUM AIR FLOW. DURING OCCUPIED MODE, AS DETERMINED BY OCCUPANCY SCHEDULE, THE OUTSIDE AIR DAMPER SHALL MODULATE TO MAX SCHEDULED OUTSIDE AIR FLOW RATE.

**AHU FAN SPEED CONTROL:**  
THE VARIABLE FREQUENCY DRIVE SHALL MODULATE FAN SPEED AS REQUIRED TO MAINTAIN A SPACE TEMPERATURE AS SENSED BY SPACE THERMOSTAT.

**SAFETY:**  
UPON SIGNAL FROM DUCT MOUNTED SMOKE DETECTOR THE AHU SHALL DE-ENERGIZE AND CLOSE OUTSIDE AIR DAMPER. THE OUTSIDE AIR DAMPER SHALL FAIL CLOSE.

**ECONOMIZER MODE (FOR UNITS WITH > 56 MBH TOTAL):**

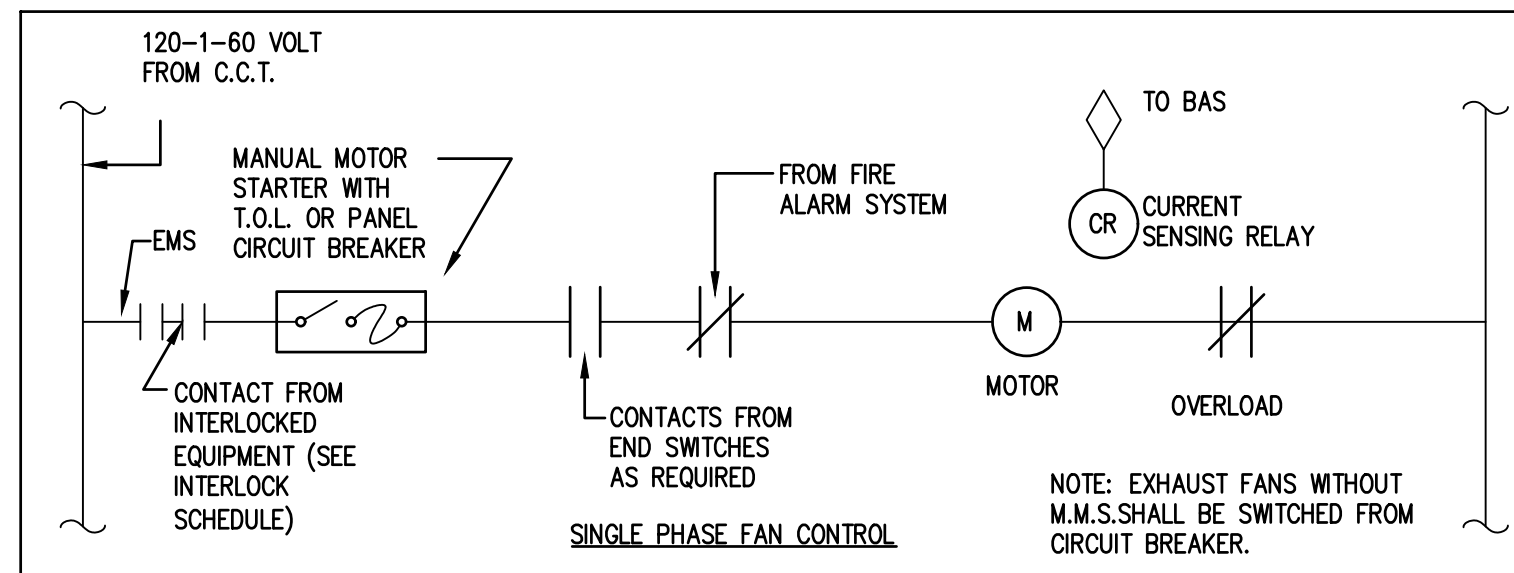
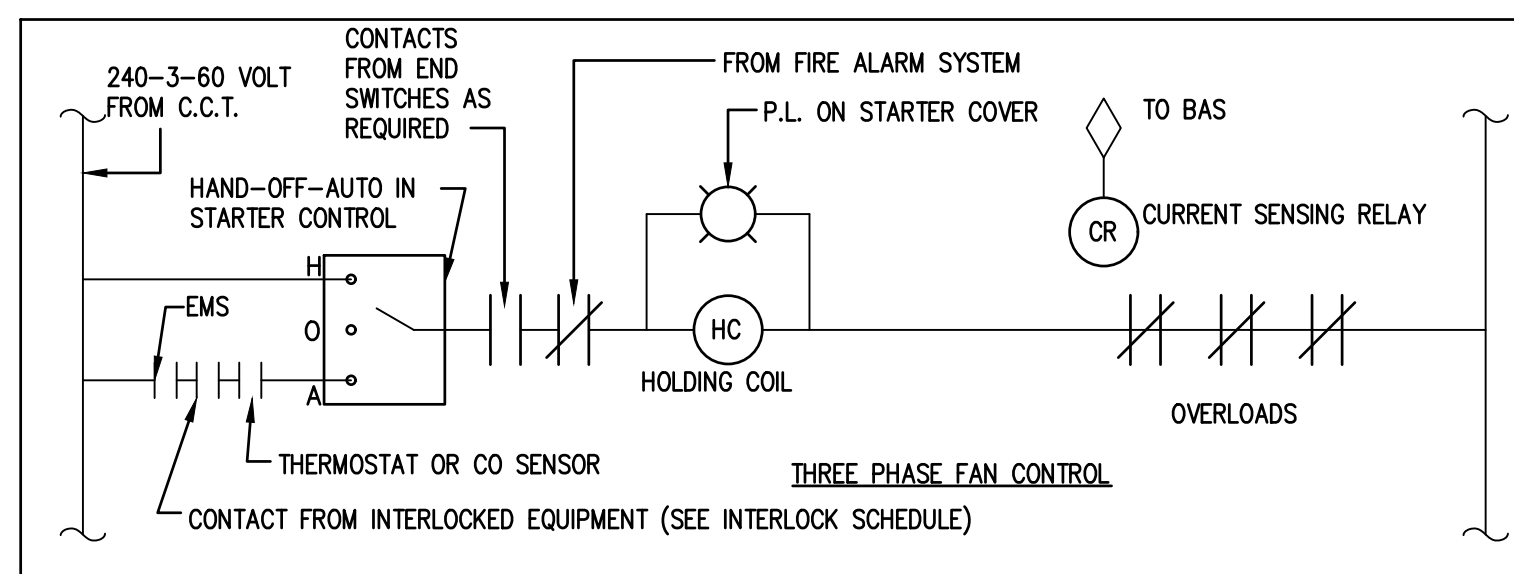
IF THE OA TEMPERATURE IS BELOW 65F (AS SENSED BY THE OA TEMP. SENSOR) THE UNIT SHALL BE IN ECONOMIZER MODE.

IN ECONOMIZER MODE THE UNIT SHALL MODULATE OPEN THE OA DAMPER.  
IF SPACE HUMIDITY RISES ABOVE 55%RH THE UNIT SHALL EXIT ECONOMIZER MODE AND RESUME NORMAL OPERATION. IF THE OA TEMPERATURE (AS SENSED BY THE OA TEMP. SENSOR) IS BELOW 55F THE UNIT SHALL EXIT ECONOMIZER MODE AND RESUME NORMAL OPERATION.

**MISCELLANEOUS**

THE OA DAMPER SHALL CLOSE WHEN AHU IS DE-ENERGIZED. THE OA DAMPER SHALL FAIL CLOSE.

## CONTROLS - 1 & 3 PHASE MOTOR STARTERS



## INTERLOCK SCHEDULE

UNIT	INTERLOCKS WITH
AHU-9	MOTORIZED OA DAMPER
AHU-10	MOTORIZED OA DAMPER
AHU-11	MOTORIZED OA DAMPER

## CONTROL SYSTEM NOTES

1. CONTROLS CONTRACTOR TO PROVIDE COMPLETE STAND-ALONE CONTROLS FOR AIR CONDITIONING EQUIPMENT. ALL CONTROLS SHALL HAVE 7-DAY PROGRAMMABLE, OCCUPIED, UNOCCUPIED, AND SET-BACK CONTROLS. WHERE POSSIBLE UTILIZE THE RTU CONTROL PANEL TO ACHIEVE SEQUENCE OF OPERATIONS.
2. THE CONTROLS SYSTEM SHALL INCLUDING ALL HARDWARE, SOFTWARE, AND PROGRAMMING AS REQUIRED TO ACHIEVE HVAC SEQUENCE OF OPERATION. COORDINATE WITH EQUIPMENT VENDORS AND PROVIDE REQUIRED INTERFACING CONTROL DEVICES TO ACHIEVE SEQUENCE OF OPERATION.
3. ALL SEQUENCES ARE SUBJECT TO SAFETIES. CONTRACTOR SHALL PROVIDE ALL NECESSARY AND CUSTOMARY SAFETIES.
4. ALL WIRING SHALL BE IN CONDUIT. ALL CONDUIT SHALL BE INSTALLED BY CONTROLS CONTRACTOR IN ACCORDANCE WITH ELECTRICAL SPECIFICATIONS AND REQUIREMENTS FOR 120 VAC CIRCUITS.
5. THE CONTROLS CONTRACTOR SHALL PROVIDE ALL POWER REQUIREMENTS AND CONTROL VOLTAGE TRANSFORMERS AS REQUIRED FOR A FULLY FUNCTIONAL SYSTEM. COORDINATE WITH ELECTRICAL CONTRACTOR FOR TRANSFORMER LOCATIONS AND REQUIREMENTS.
6. ALL EQUIPMENT AND DEVICES SHALL BE INSTALLED PER MANUFACTURER'S UL-LISTED INSTALLATION INSTRUCTIONS.
7. CONTROLS CONTRACTOR TO COORDINATE WITH TEST AND BALANCE CONTRACTOR AND ESTABLISH CALIBRATED READINGS FOR ALL EQUIPMENT, TEMPERATURE/HUMIDITY SENSORS, AIR PRESSURE DEVICES, AND VARIABLE SPEED DRIVES.
8. CONTROLS CONTRACTOR TO PROVIDE ALL SENSORS, ACTUATORS, AND ACCESSORIES NECESSARY FOR COMPLETE INSTALL.
9. CONTROLS CONTRACTOR SHALL MAKE AVAILABLE ALL NECESSARY RELATED WORK FORCES FOR THE PURPOSE OF MECHANICAL SYSTEMS START-UP AND COMMISSIONING. SAID WORK FORCES SHALL COOPERATE FULLY WITH OTHER TRADE PERSONNEL UNTIL SUCH TIME AS THE MECHANICAL SYSTEMS ARE PROVEN SATISFACTORY AND FUNCTIONING IN ACCORDANCE WITH THE PROJECT DOCUMENTS.

M. TODD ALBRITTON  
ARCHITECT

202 EAST MAIN STREET  
THOMASTON, GEORGIA  
30286  
PH 770-550-3275  
mtoddalbrittonarchitect@gmail.com

COPYRIGHT 2025 GOSWAMI ENGI., LLC ALL RIGHTS RESERVED. THESE DRAWINGS AND SPECIFICATIONS ARE INSTRUMENTS OF SERVICE AND SHALL REMAIN THE PROPERTY OF GOSWAMI ENGI., LLC. WHETHER THE PROJECT FOR WHICH THEY WERE PREPARED IS EXECUTED OR NOT. THEY ARE NOT TO BE USED IN ANY MANNER ON OTHER PROJECTS OR EXTENSIONS TO THIS PROJECT EXCEPT BY THE AGREEMENT IN WRITING AND WITH THE APPROPRIATE COMPENSATION TO GOSWAMI ENGI., LLC. REPRODUCTIONS OR REVISIONS WITHOUT THE WRITTEN CONSENT OF GOSWAMI ENGI., LLC IS PROHIBITED.

**GOSWAMI ENGINEERING**  
Your Engineer™

12179 endersleigh court | jacksonville, fl 32258  
www.goswamiengineering.com  
904.337.9953 | info@goswamiengineering.com  
FL COA: 31627

GELLC PROJ. #25023

**PELLICANO**  
CONSTRUCTION



NEW  
ADDITION &  
RENOVATIONS  
MORNINGSIDE  
CHURCH

1560 PEDRICK RD  
TALLAHASSEE,  
FLORIDA 32317

MARK	DATE	DESCRIPTION
A	09/21/2025	PERMIT ISSUE

MECHANICAL  
CONTROLS

PROJECT DATE: 09/01/2025

PROJECT NUMBER: --

DRAWN BY: AKG

M7.1

# SPECIFICATIONS

## AIR SUPPLY, DISTRIBUTION, VENTILATION, AND EXHAUST SYSTEMS

Furnish ductwork, piping offsets, fittings, and accessories as required to provide a complete installation. Coordinate the work of the different trades to avoid interference between piping, equipment, structural, and electrical work. Provide complete, in place, all necessary offsets in piping and ductwork, and all fittings, and other components, required to install the work as indicated and specified.

### QUALITY ASSURANCE

Where materials and equipment are specified to conform to the standards of the Underwriters Laboratories, the label of or listing with reexamination in UL Bid Mat Dir, and UL 6 is acceptable as sufficient evidence that the items conform to Underwriters Laboratories requirements.

Protect metallic materials against corrosion. Provide rust-inhibiting treatment and standard finish for the equipment enclosures.

Protect stored equipment at the jobsite from the weather, humidity and temperature variations, dirt and dust, or other contaminants. Additionally, cap or plug all pipes until installed.

Provide anchor bolts for equipment placed on concrete equipment pads or on concrete slabs. Bolts to be of the size and number recommended by the equipment manufacturer and located by means of suitable templates. Installation of anchor bolts must not degrade the surrounding concrete.

### ELECTRIC HEATING COIL

Provide an electric duct heater coil in accordance with UL 1995 and NFPA 70. Provide unit-mounted coil. Provide nickel chromium resistor type coil. Provide coil with a built-in or surface-mounted high-limit thermostat interlocked electrically so that the coil cannot be energized unless the fan is energized. Provide galvanized steel or aluminum coil casing and support brackets. Mount coil to eliminate noise from expansion and contraction and for complete accessibility for service.

### DIRECT EXPANSION COIL

Provide suitable direct-expansion coils for the refrigerant involved. Provide refrigerant piping that conforms to ASTM B280 and clean, dehydrate and seal. Provide seamless copper tubing suction headers or seamless or resistance welded steel tube suction headers with copper connections. Provide supply headers that consist of a distributor which distributes the refrigerant through seamless copper tubing equally to all circuits in the Provide circuited tubes to ensure minimum pressure drop and maximum heat transfer. Provide circuiting that permits refrigerant flow from inlet to suction outlet without causing oil slugging or restricting refrigerant flow in coil. Provide field installed coils which are completely dehydrated and sealed at the factory upon completion of pressure tests. Pressure test coils in accordance with UL 1995.

## COMMON MOTOR REQUIREMENTS FOR HVAC EQUIPMENT

Coordinate features of motors, installed units, and accessory devices to be compatible with the following:

1. Motor controllers.
2. Torque, speed, and horsepower requirements of the load.
3. Ratings and characteristics of supply circuit and required control sequence.
4. Ambient and environmental conditions of installation location.

Mechanical subcontractor shall furnish motor controllers (starters) for all mechanical equipment.

## TESTING ADJUSTING AND BALANCING FOR HVAC

Instrument calibration reports, to include the following:

1. Instrument type and make.
2. Serial number.
3. Application.
4. Dates of use.
5. Dates of calibration.

TAB Contractor Qualifications: Engage a TAB entity certified by AABC, NEBB, or TABB

### EXAMINATION

Examine the Contract Documents to become familiar with Project requirements and to discover conditions in systems' designs that may preclude proper TAB of systems and equipment. Examine systems for installed balancing devices, such as test ports, gage cocks, thermometer wells, flow-control devices, balancing valves and fittings, and manual volume dampers. Verify that locations of these balancing devices are accessible. Examine the approved submittals for HVAC systems and equipment.

### GENERAL PROCEDURES FOR BALANCING AIR SYSTEMS

Prepare test reports for both fans and outlets. Obtain manufacturer's outlet factors and recommended testing procedures. Crosscheck the summation of required outlet volumes with required fan volumes. Prepare schematic diagrams of systems "as-built" duct layouts.

Adjust fans to deliver total indicated airflow within the maximum allowable fan speed listed by fan manufacturer.

1. Measure total airflow.
  - a. Where sufficient space in ducts is unavailable for Pitot-tube traverse measurements, measure airflow at terminal outlets and inlets and calculate the total airflow.
2. Measure fan static pressures as follows to determine actual static pressure:
  - a. Measure outlet static pressure as far downstream from the fan as practical and upstream from restrictions in ducts such as elbows and transitions.
  - b. Measure static pressure directly at the fan outlet or through the flexible connection.
  - c. Measure inlet static pressure of single-inlet fans in the inlet duct as near the fan as possible, upstream from the flexible connection, and downstream from duct restrictions.
  - d. Measure inlet static pressure of double-inlet fans through the wall of the plenum that houses the fan.

Adjust volume dampers for main duct, submain ducts, and major branch ducts to indicated airflows within specified tolerances.

1. Measure airflow of submain and branch ducts.
  - a. Where sufficient space in submain and branch ducts is unavailable for Pitot-tube traverse measurements, measure airflow at terminal outlets and inlets and calculate the total airflow for that zone.
2. Measure static pressure at a point downstream from the balancing damper, and adjust volume dampers until the proper static pressure is achieved.
3. Re-measure each submain and branch duct after all have been adjusted. Continue to adjust submain and branch ducts to indicated airflows within specified tolerances.

Measure air outlets and inlets without making adjustments.

1. Measure terminal outlets using a direct-reading hood or outlet manufacturer's written instructions and calculating factors.

Adjust air outlets and inlets for each space to indicated airflows within specified tolerances of indicated values. Make adjustments using branch volume dampers rather than extractors and the dampers at air terminals.

1. Adjust each outlet in same room or space to within specified tolerances of indicated quantities without generating noise levels above the limitations prescribed by the Contract Documents.
2. Adjust patterns of adjustable outlets for proper distribution without drafts.

Motors, 1/2 HP and Larger: Test at final balanced conditions and record the following data:

1. Manufacturer's name, model number, and name number.
2. Motor horsepower rating.
3. Motor rpm.
4. Efficiency rating.
5. Nameplate and measured voltage, each phase.
6. Nameplate and measured amperage, each phase.
7. Starter thermal-protection-element rating.

For condensing units and systems.

- A. Verify proper rotation of fans.
- B. Measure entering- and leaving-air temperatures.
- C. Record compressor data.

TAB report

General: Prepare a certified written report; tabulate and divide the report into separate sections for tested systems and balanced systems.

1. Include a certification sheet at the front of the report's binder, signed and sealed by the certified testing and balancing engineer.
2. Include a list of instruments used for procedures, along with proof of calibration.
2. Provide report on measured air flow before and after TAB, provide report on all mechanical equipment

## DUCT INSULATION

### QUALITY ASSURANCE

Surface-Burning Characteristics: For insulation and related materials, as determined by testing identical products according to ASTM E 84, by a testing agency acceptable to authorities having jurisdiction. Factory label insulation and jacket materials and adhesive, mastic, tapes, and cement material containers, with appropriate markings of applicable testing agency.

1. Insulation Installed Indoors: Flame-spread index of 25 or less, and smoke-developed index of 50 or less.
2. Insulation Installed Outdoors: Flame-spread index of 75 or less, and smoke-developed index of 150 or less.

### INSULATION MATERIALS

Products shall not contain asbestos, lead, mercury, or mercury compounds.

Products that come in contact with stainless steel shall have a leachable chloride content of less than 50 ppm when tested according to ASTM C 871.

Insulation materials for use on austenitic stainless steel shall be qualified as acceptable according to ASTM C 795.

Foam insulation materials shall not use CFC or HCFC blowing agents in the manufacturing process.

1. Flexible Elastomeric Insulation: Closed-cell, sponge- or expanded-rubber materials. Comply with ASTM C 534, Type II for sheet materials.**Products:** The Basis of Design product is as indicated on the drawings. In addition to the Basis of Design product, equivalent products from Approved Alternative Manufacturers may be submitted from the list below; however, those submittals must include a coversheet itemizing every difference from the Basis of Design product as indicated on the drawings or in the specifications. Products from manufacturers other than the Basis of Design or an Approved Alternative Manufacturer will not be reviewed or returned 'Rejected' until the Substitute product's manufacturer is approved. Any delay in reviewing a submittal due to a Substitute product is the responsibility of the party submitting the product.
  - a. Aeroflex USA, Inc.; Aerocel.
  - b. Armocell LLC; AP Armoflex.
  - c. K-Flex USA; Insul-Sheet, K-Flex Gray Duct Liner, and K-FLEX LS.

### ADHESIVES

Materials shall be compatible with insulation materials, jackets, and substrates and for bonding insulation to itself and to surfaces to be insulated unless otherwise indicated.

Flexible Elastomeric and Polyolefin Adhesive: Comply with MIL-A-24179A, Type II, Class I.

1. Products: The Basis of Design product is as indicated on the drawings. In addition to the Basis of Design product, equivalent products from Approved Alternative Manufacturers may be submitted from the list below; however, those submittals must include a coversheet itemizing every difference from the Basis of Design product as indicated on the drawings or in the specifications. Products from manufacturers other than the Basis of Design or an Approved Alternative Manufacturer will not be reviewed or returned 'Rejected' until the Substitute product's manufacturer is approved. Any delay in reviewing a submittal due to a Substitute product is the responsibility of the party submitting the product.
  - a. Aeroflex USA, Inc.; Aeroseal.
  - b. Armocell LLC; Armoflex 520 Adhesive.
  - c. Foster Brand, Specialty Construction Brands, Inc., a business of H. B. Fuller Company, 85-75K-Flex USA, R-373 Contact Adhesive.
2. For indoor applications, adhesive shall have a VOC content of 50 g/L or less when calculated according to 40 CFR 59, Subpart D (EPA Method 24).

ASJ Adhesive, and FSK Jacket Adhesive: Comply with MIL-A-3316C, Class 2, Grade A for bonding insulation jacket lap seams and joints.

1. Products: The Basis of Design product is as indicated on the drawings. In addition to the Basis of Design product, equivalent products from Approved Alternative Manufacturers may be submitted from the list below; however, those submittals must include a coversheet itemizing every difference from the Basis of Design product as indicated on the drawings or in the specifications. Products from manufacturers other than the Basis of Design or an Approved Alternative Manufacturer will not be reviewed or returned 'Rejected' until the Substitute product's manufacturer is approved. Any delay in reviewing a submittal due to a Substitute product is the responsibility of the party submitting the product.
  - a. Childers Brand, Specialty Construction Brands, Inc., a business of H. B. Fuller Company, CP-82.
  - b. Eagle Bridges - Marathon Industries; 225.
  - c. Foster Brand, Specialty Construction Brands, Inc., a business of H. B. Fuller Company, 85-50 Mon-Eco Industries, Inc.; 22-25.
2. For indoor applications, adhesive shall have a VOC content of 50 g/L or less when calculated according to 40 CFR 59, Subpart D (EPA Method 24).

### MASTIC

Materials shall be compatible with insulation materials, jackets, and substrates; comply with MIL-PRF-19565C, Type II.

1. For indoor applications, use mastics that have a VOC content of 50 g/L or less when calculated according to 40 CFR 59, Subpart D (EPA Method 24).

Breather Mastic: Water based; suitable for indoor and outdoor use on above ambient services.

1. Products: The Basis of Design product is as indicated on the drawings. In addition to the Basis of Design product, equivalent products from Approved Alternative Manufacturers may be submitted from the list below; however, those submittals must include a coversheet itemizing every difference from the Basis of Design product as indicated on the drawings or in the specifications. Products from manufacturers other than the Basis of Design or an Approved Alternative Manufacturer will not be reviewed or returned 'Rejected' until the Substitute product's manufacturer is approved. Any delay in reviewing a submittal due to a Substitute product is the responsibility of the party submitting the product.
  - a. Childers Brand, Specialty Construction Brands, Inc., a business of H. B. Fuller Company, CP-10.
  - b. Eagle Bridges - Marathon Industries; 550.
  - c. Foster Brand, Specialty Construction Brands, Inc., a business of H. B. Fuller Company, 46-50.
  - d. Mon-Eco Industries, Inc.; 55-50.
  - e. Vinsoco Corporation; WC-1/WC-5.
2. Water-Vapor Permeance: ASTM F 1249, 1.8 perms at 0.0625-inch dry film thickness.
3. Service Temperature Range: Minus 20 to plus 180 deg F.
4. Solids Content: 60 percent by volume and 66 percent by weight.
5. Color: White.

### SEALANTS

FSK and Metal Jacket Flashing Sealants:

Products: The Basis of Design product is as indicated on the drawings. In addition to the Basis of Design product, equivalent products from Approved Alternative Manufacturers may be submitted from the list below; however, those submittals must include a coversheet itemizing every difference from the Basis of Design product as indicated on the drawings or in the specifications. Products from manufacturers other than the Basis of Design or an Approved Alternative Manufacturer will not be reviewed or returned 'Rejected' until the Substitute product's manufacturer is approved. Any delay in reviewing a submittal due to a Substitute product is the responsibility of the party submitting the product.

- a. Childers Brand, Specialty Construction Brands, Inc., a business of H. B. Fuller Company, CP-76 Eagle Bridges - Marathon Industries; 405.
  - b. Foster Brand, Specialty Construction Brands, Inc., a business of H. B. Fuller Company, 95-44.
  - c. Mon-Eco Industries, Inc.; 44-05.
2. Materials shall be compatible with insulation materials, jackets, and substrates.
  3. Fire- and water-resistant, flexible, elastomeric sealant.
  4. Service Temperature Range: Minus 40 to plus 250 deg F.
  5. Color: Aluminum.

ASJ Flashing Sealants, and Vinyl and PVC Jacket Flashing Sealants:

1. Products: The Basis of Design product is as indicated on the drawings. In addition to the Basis of Design product, equivalent products from Approved Alternative Manufacturers may be submitted from the list below; however, those submittals must include a coversheet itemizing every difference from the Basis of Design product as indicated on the drawings or in the specifications. Products from manufacturers other than the Basis of Design or an Approved Alternative Manufacturer will not be reviewed or returned 'Rejected' until the Substitute product's manufacturer is approved. Any delay in reviewing a submittal due to a Substitute product is the responsibility of the party submitting the product.
  - a. Childers Brand, Specialty Construction Brands, Inc., a business of H. B. Fuller Company, CP-76.
2. Materials shall be compatible with insulation materials, jackets, and substrates.
3. Fire- and water-resistant, flexible, elastomeric sealant.
4. Service Temperature Range: Minus 40 to plus 250 deg F.
5. Color: White.

## METAL DUCTS

### PERFORMANCE REQUIREMENTS

Delegated Duct Design: Duct construction, including sheet metal thicknesses, seam and joint construction, and hangers and supports, shall comply with SMACNA's "HVAC Duct Construction Standards - Metal and Flexible" and performance requirements and design criteria indicated in "Duct Schedule" Article.

Structural Performance: Duct hangers and supports and seismic restraints shall withstand the effects of gravity and seismic loads and stresses within limits and under conditions described in SMACNA's "HVAC Duct Construction Standards - Metal and Flexible" and ASCE/SEI 7. SMACNA's "Seismic Restraint Manual: Guidelines for Mechanical Systems."

Documentation of work performed for compliance with ASHRAE/IESNA 90.1, Section 6.4.4.2.2 - "Duct Leakage Tests."

Documentation of work performed for compliance with ASHRAE 62.1, Section 7.2.4 - "Ventilation System Start-up."

### SINGLE WALL RECTANGULAR DUCTS AND FITTINGS

General Fabrication Requirements: Comply with SMACNA's "HVAC Duct Construction Standards - Metal and Flexible" based on indicated static-pressure class unless otherwise indicated.

Transverse Joints: Select joint types and fabricate according to SMACNA's "HVAC Duct Construction Standards - Metal and Flexible," Figure 2-1, "Rectangular Duct/Transverse Joints," for static-pressure class, applicable sealing requirements, materials involved, duct-support intervals, and other provisions in SMACNA's "HVAC Duct Construction Standards - Metal and Flexible."

Longitudinal Seams: Select seam types and fabricate according to SMACNA's "HVAC Duct Construction Standards - Metal and Flexible," Figure 2-2, "Rectangular Duct/Longitudinal Seams," for static-pressure class, applicable sealing requirements, materials involved, duct-support intervals, and other provisions in SMACNA's "HVAC Duct Construction Standards - Metal and Flexible."

Elbows, Transitions, Offsets, Branch Connections, and Other Duct Construction: Select types and fabricate according to SMACNA's "HVAC Duct Construction Standards - Metal and Flexible," Chapter 4, "Fittings and Other Construction," for static-pressure class, applicable sealing requirements, materials involved, duct-support intervals, and other provisions in SMACNA's "HVAC Duct Construction Standards - Metal and Flexible."

### SINGLE WALL ROUND DUCTS AND FITTINGS

General Fabrication Requirements: Comply with SMACNA's "HVAC Duct Construction Standards - Metal and Flexible," Chapter 3, "Round, Oval, and Flexible Duct," based on indicated static-pressure class unless otherwise indicated.

Manufacturers: The Basis of Design product is as indicated on the drawings. In addition to the Basis of Design product, equivalent products from Approved Alternative Manufacturers may be submitted from the list below; however, those submittals must include a coversheet itemizing every difference from the Basis of Design product as indicated on the drawings or in the specifications. Products from manufacturers other than the Basis of Design or an Approved Alternative Manufacturer will not be reviewed or returned 'Rejected' until the Substitute product's manufacturer is approved. Any delay in reviewing a submittal due to a Substitute product is the responsibility of the party submitting the product.

- a. Lindab Inc.
- b. McGill AirFlow LLC.
- c. SEMCO Incorporated.
- d. Sheet Metal Connectors, Inc.
- e. Spiral Manufacturing Co., Inc.
- f. Crown Products Co Inc.

Transverse Joints: Select joint types and fabricate according to SMACNA's "HVAC Duct Construction Standards - Metal and Flexible," Figure 3-1, "Round Duct Transverse Joints," for static-pressure class, applicable sealing requirements, materials involved, duct-support intervals, and other provisions in SMACNA's "HVAC Duct Construction Standards - Metal and Flexible."

1. Transverse Joints in Ducts Larger Than 60 Inches (1524 mm) in Diameter: Flanged.
- Longitudinal Seams: Select seam types and fabricate according to SMACNA's "HVAC Duct Construction Standards - Metal and Flexible," Figure 3-2, "Round Duct Longitudinal Seams," for static-pressure class, applicable sealing requirements, materials involved, duct-support intervals, and other provisions in SMACNA's "HVAC Duct Construction Standards - Metal and Flexible."

1. Fabricate round ducts larger than 90 inches (2286 mm) in diameter with butt-welded longitudinal seams.
2. Fabricate flat-oval ducts larger than 72 inches (1830 mm) in width (major dimension) with butt-welded longitudinal seams.

Tees and Laterals: Select types and fabricate according to SMACNA's "HVAC Duct Construction Standards - Metal and Flexible," Figure 3-5, "90 Degree Tees and Laterals," and Figure 3-6, "Conical Tees," for static-pressure class, applicable sealing requirements, materials involved, duct-support intervals, and other provisions in SMACNA's "HVAC Duct Construction Standards - Metal and Flexible."

### HANGERS AND SUPPORTS

Hanger Rods for Noncorrosive Environments: Cadmium-plated steel rods and nuts.

Hanger Rods for Corrosive Environments: Electrogalvanized, all-thread rods or galvanized rods with threads painted with zinc-chromate primer after installation.

Strap and Rod Sizes: Comply with SMACNA's "HVAC Duct Construction Standards - Metal and Flexible," Table 5-1 (Table 5-1M), "Rectangular Duct Hangers Minimum Size," and Table 5-2, "Minimum Hanger Sizes for Round Duct."

Steel Cables for Galvanized-Steel Ducts: Galvanized steel complying with ASTM A 603.

Steel Cables for Stainless-Steel Ducts: Stainless steel complying with ASTM A 492.

Steel Cable End Connections: Cadmium-plated steel assemblies with brackets, seal, and bolts designed for duct hanger service; with an automatic-locking and clamping device.

Duct Attachments: Sheet metal screws, blind rivets, or self-tapping metal screws; compatible with duct materials.

Trapeze and Riser Supports:

1. Supports for Galvanized-Steel Ducts: Galvanized-steel shapes and plates.
2. Supports for Stainless-Steel Ducts: Stainless-steel shapes and plates.
3. Supports for Aluminum Ducts: Aluminum or galvanized steel coated with zinc chromate.

## AIR DUCT ACCESSORIES

### MANUAL VOLUME DAMPERS

Standard, Steel, Manual Volume Dampers:

The Basis of Design product is from Ruskin Company.

1. Standard leakage rating.
2. Suitable for horizontal or vertical applications.
3. Frames:
  - a. Frame: Hat-shaped, 0.094-inch- (2.4-mm-) thick, galvanized sheet steel.
  - b. Mitered and welded corners.
  - c. Flanges for attaching to walls and flangeless frames for installing in ducts.
4. Blades:
  - a. Multiple or single blade.
  - b. Parallel- or opposed-blade design.
  - c. Stiffen damper blades for stability.
  - d. Galvanized -steel, 0.064 inch (1.62 mm) thick.
  - e. Blade Axles: Galvanized steel.
5. Bearings:
  - a. Oil-impregnated bronze.
  - b. Dampers in ducts with pressure classes of 3-inch wg (750 Pa) or less shall have axes full length of damper blades and bearings at both ends of operating shaft.
7. Tie Bars and Brackets: Galvanized steel.

### TURNING VANES

The Basis of Design product is from Ductmate Industries, Inc.

Manufactured Turning Vanes for Nonmetal Ducts: Fabricate curved blades of resin-bonded fiberglass with acrylic polymer coating; support with bars perpendicular to blades set; set into vane runners suitable for duct mounting.

General Requirements: Comply with SMACNA's "HVAC Duct Construction Standards - Metal and Flexible," Figures 4-3, "Vanes and Vane Runners," and 4-4, "Vane Support in Elbows."

Vane Construction: Single wall for ducts up to 48 inches (1200 mm) wide and double wall for larger dimensions.

### INSTALLATION

Install duct accessories according to applicable details in SMACNA's "HVAC Duct Construction Standards - Metal and Flexible" for metal ducts and in NAIMA AH116, "Fibrous Glass Duct Construction Standards," for fibrous-glass ducts.

Install duct accessories of materials suited to duct materials; use galvanized-steel accessories in galvanized-steel and fibrous-glass ducts, stainless-steel accessories in stainless-steel ducts, and aluminum accessories in aluminum ducts.

# M. TODD ALBRITTON ARCHITECT

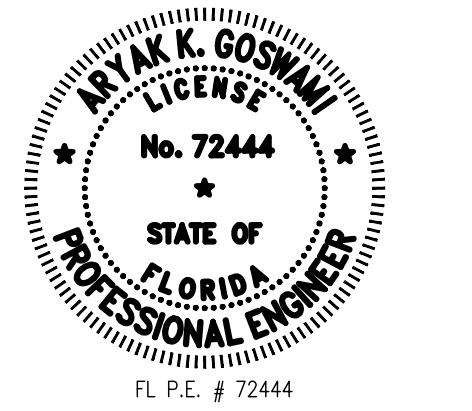
202 EAST MAIN STREET  
THOMASTON, GEORGIA  
30286  
PH 770-550-3275  
mtoddalbrintonarchitect@gmail.com

COPYRIGHT 2025 GOSWAMI ENGI., LLC ALL RIGHTS RESERVED. THESE DRAWINGS AND SPECIFICATIONS ARE INSTRUMENTS OF SERVICE AND SHALL REMAIN THE PROPERTY OF GOSWAMI ENGI. LLC. WHETHER THE PROJECT FOR WHICH THEY WERE PREPARED IS EXECUTED OR NOT. THEY ARE NOT TO BE USED IN ANY MANNER ON OTHER PROJECTS OR EXTENSIONS TO THIS PROJECT EXCEPT BY THE AGREEMENT IN WRITING AND WITH THE APPROPRIATE COMPENSATION TO GOSWAMI ENGI. LLC. REPRODUCTIONS OF THESE DRAWINGS WITHOUT THE WRITTEN CONSENT OF GOSWAMI ENGI., LLC IS PROHIBITED.



12179 endersleigh court | jacksonville, fl 32258  
www.goswamiengineering.com  
904.337.9953 | info@goswamiengineering.com  
FL COA: 31627

GELLC PROJ. #J25023



# NEW ADDITION & RENOVATIONS MORNINGSIDE CHURCH

1560 PEDRICK RD  
TALLAHASSEE,  
FLORIDA 32317

A	09/21/2025	PERMIT ISSUE
MARK	DATE	DESCRIPTION

## MECHANICAL SPECIFICATIONS

PROJECT DATE: 09/01/2025

PROJECT NUMBER: --

DRAWN BY: AKG

# M9.1