

MECHANICAL SYSTEMS SUMMARY, SETPOINTS, AND CONTROL MATRIX															
UNIT NO.	SERVICE LOCATION	FLOOR AREA (SF)	PEOPLE (NO.)	SUPPLY (CFM)	RETURN (CFM)	OUTDOOR (CFM)	EXHAUST (CFM)	OCCUPIED CLG SETPOINT	OCCUPIED HTG SETPOINT	NIGHT SET-BACK HTG SETPOINT	NIGHT SET-BACK CLG SETPOINT	OCCUPIED	UNOCCUPIED	UNIT ZONE CONTROL OR INTERLOCK	
DHU-1	MAIN SALES	7693		4,000	1,870	2,130	0	72°F DB, 52°F DP	70°F DB, 52°F DP	76°F DB, 52°F DP	68°F DB, 52°F DP	FAN ON AND OA DAMPER OPEN	FAN AUTO AND OA DAMPER CLOSED	INTERLOCK WITH EF-3	
RTU-1	MAIN SALES	7693		4,000	4,000	0	0	72°F DB, 52°F DP	70°F DB, 52°F DP	76°F DB, 52°F DP	68°F DB, 52°F DP	FAN ON AND OA DAMPER OPEN	FAN AUTO AND OA DAMPER CLOSED	CONTROL A	
RTU-2	DELI PREP	1212	9	2,000	1,690	310	0	70°F DB, 50% RH	70°F DB, 50% RH	76°F DB, 50% RH	65°F DB, 50% RH	FAN ON AND OA DAMPER OPEN	FAN AUTO AND OA DAMPER CLOSED	CONTROL B	
RTU-3	STOCK / RECEIVING	1911	2	4,000	3,630	370	0	75°F DB, 50% RH	70°F DB, 50% RH	76°F DB, 50% RH	65°F DB, 50% RH	FAN ON AND OA DAMPER OPEN	FAN AUTO AND OA DAMPER CLOSED	CONTROL C	
ERV-1	FRONT OF HOUSE OFFICES	969	12	230	230	230	230	--	--	--	--	FANS ON	FANS OFF	CONTROL D	
EDH-1	FRONT OF HOUSE OFFICES	--	--	230	--	--	--	--	45°F DB	--	--	--	--	CONTROL D	
IU-1	CLICK COLLECT & RR	176	4	700	700	0	0	75°F DB	70°F DB	80°F DB	65°F DB	FAN AUTO	FAN AUTO	CONTROL J	
IU-2	CASHIER	241	1	175	175	0	0	75°F DB	70°F DB	80°F DB	65°F DB	FAN AUTO	FAN AUTO	CONTROL J	
IU-3	BOOKKEEPING	92	1	175	175	0	0	75°F DB	70°F DB	80°F DB	65°F DB	FAN AUTO	FAN AUTO	CONTROL J	
IU-4	VESTIBULE	316	0	700	700	0	0	85°F DB	60°F DB	90°F DB	55°F DB	FAN AUTO	FAN AUTO	CONTROL J	
IU-5	BREAK ROOM	70	5	280	280	0	0	75°F DB	70°F DB	80°F DB	65°F DB	FAN AUTO	FAN AUTO	CONTROL J	
IU-6	MOTHER'S ROOM	74	1	175	175	0	0	75°F DB	70°F DB	80°F DB	65°F DB	FAN AUTO	FAN AUTO	CONTROL J	
IU-7	SCAN	601	3	350	315	35	0	75°F DB	70°F DB	80°F DB	65°F DB	FAN ON AND OA DAMPER OPEN	FAN AUTO AND OA DAMPER CLOSED	CONTROL J	
IU-8	MANAGER	75	1	350	330	20	0	75°F DB	70°F DB	80°F DB	65°F DB	FAN ON AND OA DAMPER OPEN	FAN AUTO AND OA DAMPER CLOSED	CONTROL J	
AC-1	TRUCK DOCK DOOR	--	--	--	--	--	--	--	--	--	--	FAN AUTO	FAN AUTO	CONTROL G	
AC-2	GROUND DELIVERY DOOR	--	--	--	--	--	--	--	--	--	--	FAN AUTO	FAN AUTO	CONTROL G	
AC-3	ENTRY VESTIBULE	--	--	--	--	--	--	--	--	--	--	FAN AUTO	FAN AUTO	CONTROL G	
EF-1	#31A	--	--	--	--	--	790	--	--	--	--	FAN AUTO, HEAT SENSOR	FAN AUTO, HEAT SENSOR	CONTROL M	
EF-2	RESTROOM	--	--	--	--	--	500	--	--	--	--	FAN AUTO	FAN AUTO	CONTROL D	
EF-3	#21E	--	--	--	--	--	480	--	--	--	--	FAN AUTO, HEAT SENSOR	FAN AUTO, HEAT SENSOR	CONTROL N	
TAF-1	MANAGER	--	--	--	--	--	N/A	--	--	--	--	FAN ON	FAN ON	CONTROL H	
DF 1-11	SALES FLOOR	--	--	--	--	--	--	--	--	--	--	FAN AUTO	FAN AUTO	CONTROL H	
GUH-1	RECEIVING	--	--	--	--	--	--	--	65°F DB	--	65°F DB	--	FAN AUTO	FAN AUTO	CONTROL K

PROJECT DESIGN CONDITIONS				SCHEDULE NOTES			
TALLAHASSEE, FL				ASHRAE COOLING 0.4% COOLING DB / MCWB			
ELEVATION 173				ASHRAE DEHUMID 0.4% DEW POINT TEMPERATURE			
CLIMATE DATA				96.2°F DB / 76.4°F MCWB			
				83.1°F MCOB / 78.1°F DP			
				ASHRAE HEATING 99.6% DRY BULB TEMPERATURE			
				26.9°F			
				EQUIPMENT RATING DRY BULB TEMPERATURE			
				101.2°F			

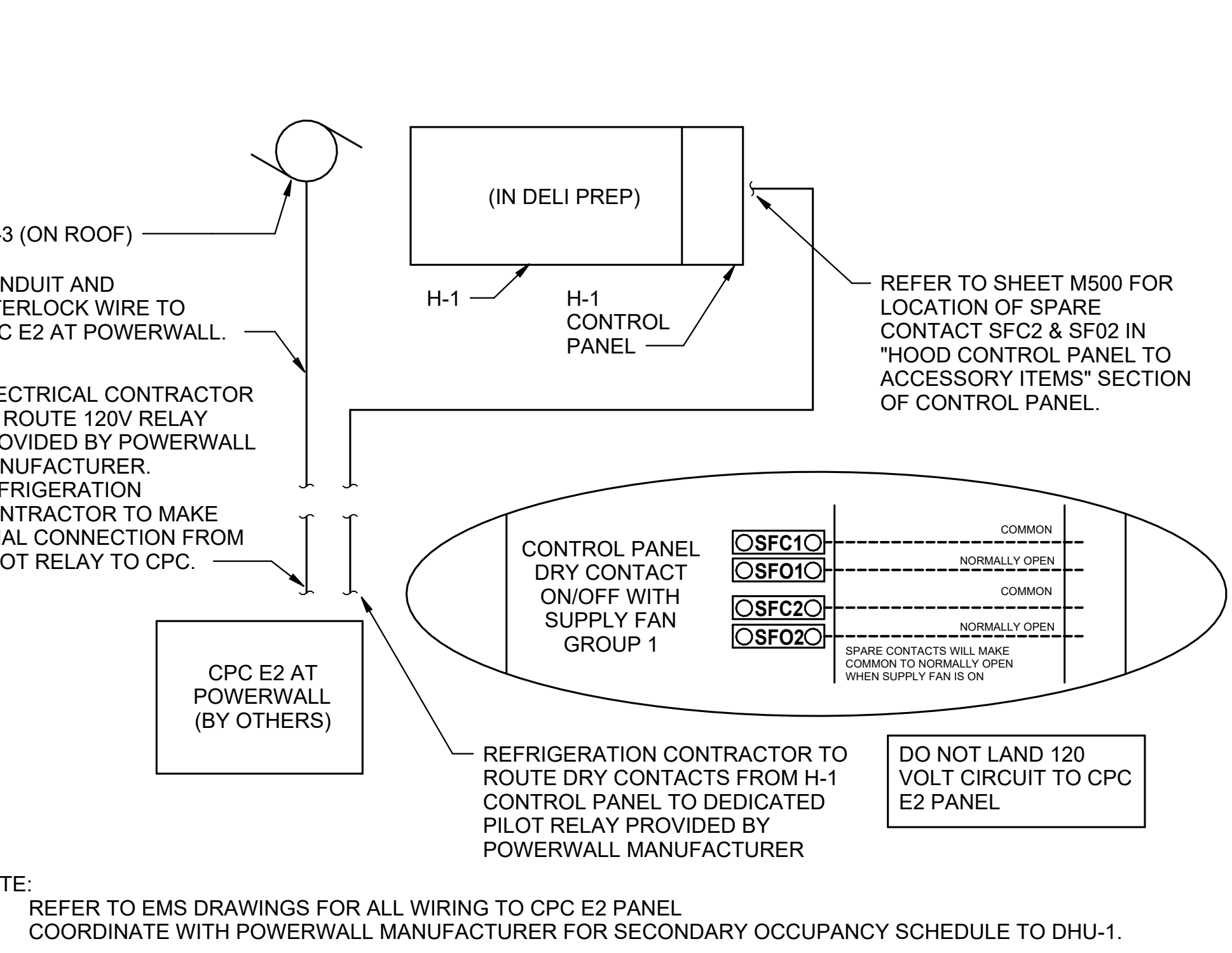
CONTROL NOTES

- REMOTE AVERAGING TEMPERATURE SENSORS, HUMIDITY SENSOR, AND INTERNAL UNIT TEMPERATURE AND HUMIDITY SENSORS MONITORED THROUGH CPC. FAN PROOF MONITORED THROUGH INTERNAL CONTROLLER.
- REMOTE TEMPERATURE (WITH OCCUPANT OVERRIDE) AND INTERNAL UNIT TEMPERATURE AND HUMIDITY SENSORS MONITORED THROUGH CPC. FAN PROOF MONITORED THROUGH INTERNAL CONTROLLER.
- REMOTE TEMPERATURE AND HUMIDITY SENSOR MONITORED THROUGH CPC. FAN PROOF MONITORED THROUGH INTERNAL CONTROLLER.
- EQUIPMENT SHALL BE CONTROLLED VIA EMS CONTRACTOR AND SHALL OPERATE BASED ON TIME OF DAY SCHEDULE.
- INTERNAL HOOD HEAT SENSORS WITH MANUAL OVERRIDE SWITCH.
- INTERLOCK WITH MICROSWITCH.
- OPERATE CONTINUOUSLY, 24 HOURS A DAY.
- WIRED THERMOSTAT AND REMOTE TEMPERATURE SENSOR MONITORED THROUGH CPC.
- REMOTE WALL THERMOSTAT CONTROL.
- INTERLOCK WITH DOOR CONTACTS.
- INTERLOCK WITH ASSOCIATED EQUIPMENT RELAY.

SENSOR MATRIX

UNIT NUMBER	TEMP. SENSOR	WALL THERMOSTAT	ADDITIONAL TEMP. SENSOR FOR CPC	AVERAGING SENSOR	HUMIDITY SENSOR	NOTES
DHU-1	-	-	-	MNF	MNF	1
RTU-1	-	-	-	MNF	MNF	1
RTU-2	MNF	-	-	-	MNF	1
RTU-3	MNF	-	-	-	MNF	1
IU-1	-	MNF	PS	-	-	2
IU-2	-	MNF	PS	-	-	2
IU-3	-	MNF	PS	-	-	2
IU-4	-	MNF	PS	-	-	2
IU-5	-	MNF	PS	-	-	2
IU-6	-	MNF	PS	-	-	2
IU-7	-	MNF	PS	-	-	2
IU-8	-	MNF	PS	-	-	2

- ALL SENSORS SHALL BE INSTALLED BY REFRIGERATION CONTRACTOR AND ROUTED TO UNIT CONTROLLER.
- CPC SENSOR WIRED BY REFRIGERATION CONTRACTOR, THERMOSTAT WIRED BY MECHANICAL CONTRACTOR.
- INT = INTEGRAL
- MNF = MANUFACTURER (SHIPPED LOOSE)
- PS = POWERWALL SUPPLIER (SHIPPED LOOSE)



H-1 SEQUENCE OF OPERATION:
WHEN SIGNAL FROM H-1(EF-1) IS ACTIVE, CPC TO SEND OCCUPIED SIGNAL TO DHU-1 TO OVERRIDE CURRENT SCHEDULE. WHEN SIGNAL FROM H-1(EF-1) IS NOT ACTIVE, DHU-1 SHALL OPERATE ON ACTIVE SCHEDULE.

INTEGRAL #21E SEQUENCE OF OPERATION:
WHEN SIGNAL FROM EF-3 IS ACTIVE, CPC TO SEND OCCUPIED SIGNAL TO DHU-1 TO OVERRIDE CURRENT SCHEDULE. WHEN SIGNAL FROM H-1(EF-1) IS NOT ACTIVE, DHU-1 SHALL OPERATE ON ACTIVE SCHEDULE.

INTERLOCKING SCHEMATIC

CONSTRUCTION RESPONSIBILITIES:

- MECHANICAL CONTRACTOR SHALL INSTALL ALL ROOFTOP AND INDOOR EQUIPMENT. PLACE INTO LOCAL MODE. COMPLETE MANUFACTURER PROVIDED CONTRACTOR ACKNOWLEDGEMENT CHECKLIST FORM, AND SEND TO RESPECTIVE MANUFACTURER. UPON THIS TIME GENERAL CONTRACTOR SHALL COORDINATE STARTUP SERVICES WITH MECHANICAL CONTRACTOR.
 - TEST AND BALANCE REPORT SHALL BE PROVIDED PER THE RESPONSIBILITY MATRIX LOCATED ON THE ARCHITECTURAL SHEETS. THE RESPONSIBLE PARTY FOR PROVIDING THE TEST AND BALANCE REPORT MUST ALSO COORDINATE THE TEST AND BALANCE COMPANY WITH COMMISSIONING AGENT. TEST AND BALANCE REPORT SHALL BE COMPLETED AND SUBMITTED TO THE OWNER, ARCHITECT, AND ENGINEER OF RECORD FOR REVIEW FOR COMPLIANCE WITH THE CONSTRUCTION DOCUMENTS NO LATER THAN 10 DAYS PRIOR TO PUBLIC OCCUPANCY OF THE BUILDING. REPORT SHALL INCLUDE ALL OF THE REQUIREMENTS PER SPECIFICATION SECTION 230999 WHICH INCLUDE, BUT IS NOT LIMITED TO, DOCUMENTED VERIFICATION OF ALL UNIT CONTROL SETPOINTS, DELIVERY AIR FLOW QUANTITIES, REFRIGERATION CHARGE, PRESSURE, TEMPERATURES, AND OUTDOOR AIR DAMPER SETTINGS. REFER TO DETAILS SHEETS FOR COMPLETE HVAC BASELINE EQUIPMENT SETPOINTS SCHEDULE. SCOPE OF WORK SHALL BE PERFORMED WITH NEW AIR FILTERS INSTALLED ONLY.
- GENERAL PROVISIONS BY DIVISION 23:**
- ENERGY MANAGEMENT PANEL BY COMPUTER PROCESS CONTROLS INC. (CPC) TO CONTROL ROOFTOP UNITS AND OTHER HVAC EQUIPMENT AS NOTED ON PLANS BY REMOTE TEMPERATURE/AVERAGING AND/OR HUMIDITY SENSORS. (NO EQUALS)
 - REFRIGERATION CONTROL PANEL LOCATED IN POWERWALL.
 - EMS CONTRACTOR TO INSTALL ALL CPC CONTROLS FURNISHED BY SPROUTS FARMERS MARKET.
 - REFER TO DIVISION 23 SPECIFICATIONS FOR ADDITIONAL INFORMATION.

ROOFTOP PACKAGED DEHUMIDIFICATION SALES FLOOR UNIT(S):

- CONTROL RTU UNITS WITH ZONE TEMPERATURE AND HUMIDITY SENSORS INTERLOCKED WITH CPC PANEL. TEMPERATURE AND HUMIDITY SETPOINTS INDICATED IN CONTROLS MATRIX THIS SHEET.
 - CONTROL UNITS OUTDOOR AIR DAMPER MINIMUM AND MAXIMUM POSITION ADJUSTMENT THROUGH CPC PANEL AS INDICATED IN CONTROLS MATRIX THIS SHEET.
 - SEND AN ALARM TO CPC PANEL IF UNIT IS COMMANDED TO RUN BUT IT FAILS TO RUN.
 - SHUT DOWN UNIT OPERATION IF SMOKE IS DETECTED AND ALARM SIGNAL IS SENT TO FACP PANEL. SMOKE DETECTORS WIRED TO FIRE ALARM CONTROL PANEL BY FIRE ALARM CONTRACTOR.
 - DISABLE UNIT IF THE DISCHARGE AIR TEMPERATURE EXCEEDS 130 DEGREES F OR DROPS BELOW 45 DEGREES F. SEND AN ALARM TO CPC PANEL.
- ROOFTOP PACKAGED ANCILLARY UNIT(S):**
- CONTROL UNITS WITH ZONE TEMPERATURE AND HUMIDITY SENSORS INTERLOCKED WITH CPC PANEL. TEMPERATURE SETPOINTS INDICATED IN CONTROLS MATRIX THIS SHEET.
 - CONTROL UNITS OUTDOOR AIR DAMPER MINIMUM AND MAXIMUM POSITION ADJUSTMENT THROUGH CPC PANEL AS INDICATED IN CONTROLS MATRIX THIS SHEET.
 - SEND AN ALARM TO CPC PANEL IF UNIT IS COMMANDED TO RUN BUT IT FAILS TO RUN.
 - SHUT DOWN UNIT OPERATION IF SMOKE IS DETECTED AND ALARM SIGNAL IS SENT TO FACP PANEL. SMOKE DETECTORS WIRED TO FIRE ALARM CONTROL PANEL BY FIRE ALARM CONTRACTOR.
 - DISABLE UNIT IF THE DISCHARGE AIR TEMPERATURE EXCEEDS 130 DEGREES F OR DROPS BELOW 45 DEGREES F. SEND AN ALARM TO CPC PANEL.

KITCHEN EXHAUST HOODS AND EXHAUST FANS:

- EXHAUST HOOD FAN IS CONTROLLED BY A TOGGLE SWITCH MOUNTED ON HOOD OR REMOTE SPACE TEMPERATURE SENSOR. REFER TO CONTROL MATRIX ON THIS SHEET.
- INTERLOCK EXHAUST FAN EF-1 WITH HOOD H-1, AND INTERLOCK WITH RTU-1. REFER TO INTERLOCKING SCHEMATIC ON THIS SHEET.
- PROVIDE PERFORMANCE TEST CERTIFICATE OF THE HOOD SYSTEM. IT SHALL BE PROVIDED TO OWNER BEFORE FINAL APPROVAL. TEST SHALL VERIFY PROPER OPERATION, THE RATE OF EXHAUST, MAKEUP AIR, AND CAPTURE AND CONTAINMENT PERFORMANCE OF THE EXHAUST AT NORMAL OPERATING CONDITIONS.
- INTERLOCK EF-3 WITH INTEGRAL HOOD ON EQUIPMENT #21E. REFER TO INTERLOCKING SCHEMATIC THIS SHEET.

AIR CURTAINS:

- RECEIVING DOCK AIR CURTAIN FANS STARTED BY DOOR CONTACTOR SWITCH.
- ADJUST MULTI-SPEED FAN AND DISCHARGE LOUVER BLADES TO PROVIDE FRESH AIR FLOW ACROSS DOOR OPENING.
- VESTIBULE AIR CURTAIN FANS ARE STARTED BY MAGNETIC CONTACTOR SWITCH WITH AUTODOORS.

DE-STRATIFICATION FANS:

- DE-STRATIFICATION FANS SHALL OPERATE CONTINUOUSLY, 24 HOURS A DAY.

ENERGY RECOVERY VENTILATOR (ERV) CONTROL NOTES:

- ERV SHALL BE CONTROLLED BY CPC BASED ON TIME OF DAY SCHEDULE. UNIT SHALL BE ON ONE HOUR BEFORE OCCUPIED HOURS AND OFF DURING UNOCCUPIED HOURS.

MINI-SPLIT SYSTEM CONTROL NOTES:

- MONITOR UNITS WITH ZONE TEMPERATURE SENSORS INTERLOCKED WITH CPC PANEL. TEMPERATURE SETPOINTS INDICATED IN CONTROLS MATRIX THIS SHEET.
- CONTROL UNITS OUTDOOR AIR DAMPER MINIMUM AND MAXIMUM POSITION ADJUSTMENT THROUGH CPC PANEL AS INDICATED IN CONTROLS MATRIX THIS SHEET.

DUCT HEATER (ELECTRIC):

- UNIT HEATER IS CONTROLLED BY DUCT TEMPERATURE SENSOR INTERLOCKED WITH CPC CONTROL PANEL PER SETPOINTS INDICATED IN CONTROLS MATRIX ON THIS SHEET.

UNIT HEATER (NATURAL GAS):

- UNIT HEATER IS CONTROLLED BY WALL THERMOSTAT PER SETPOINTS INDICATED IN CONTROLS MATRIX THIS SHEET.

GENERAL NEW NOTES:

- PRIOR TO SUBMITTING BID, VISIT THE JOB SITE AND BECOME FULLY ACQUAINTED WITH THE EXISTING CONDITIONS OF THE PROJECT. REVIEW THE GENERAL NOTES, SPECIFICATIONS AND OTHER DRAWINGS FOR ADDITIONAL REQUIREMENTS WHICH MAY NOT BE SPECIFICALLY CALLED OUT IN THIS PORTION OF THE CONSTRUCTION DOCUMENTS. NOTIFY ARCHITECT, ENGINEER AND/OR OWNER OF CONFLICTS OR DISCREPANCIES PRIOR TO SUBMISSION OF BID.
- PROVIDE SEISMIC RESTRAINTS AS NEEDED FOR THE MECHANICAL SYSTEMS IN THE PROJECT BASED ON THE SEISMIC ANALYSIS REQUIRED BY THE SPECIFICATIONS.
- COORDINATE THE INSTALLATION OF THE MECHANICAL SYSTEMS WITH OTHER TRADES TO ENSURE A NEAT AND ORDERLY INSTALLATION. INSTALL DUCTWORK AND PIPING AS TIGHT TO STRUCTURE AS POSSIBLE. COORDINATE WITH OTHER TRADES TO AVOID CONFLICTS WITH ELECTRICAL PANELS, LIGHTING FIXTURES, ETC. ANY MODIFICATIONS REQUIRED DUE TO LACK OF COORDINATION WILL BE THE RESPONSIBILITY OF THE CONTRACTOR AT NO EXTRA COST TO THE OWNER.
- DURING INSTALLATION OF NEW WORK, AVOID DAMAGING EXISTING SURFACES AND EQUIPMENT TO REMAIN. REPAIR DAMAGE CAUSED DURING CONSTRUCTION AT NO EXTRA COST TO THE OWNER.
- PROVIDE TEMPORARY BARRIERS TO CONTAIN DUST AND DEBRIS RESULTING FROM THE PERFORMANCE OF THE WORK TO THE AREA WHERE WORK IS BEING PERFORMED.
- ALL MECHANICAL EQUIPMENT SHOWN ON THE MECHANICAL PLANS SHALL BE PROVIDED BY DIVISION 23 UNLESS OTHERWISE NOTED.
- NEW MECHANICAL EQUIPMENT, DUCTWORK AND PIPING ARE SHOWN AT APPROXIMATE LOCATIONS. FIELD MEASURE FINAL DUCTWORK AND PIPING LOCATIONS PRIOR TO FABRICATION AND MAKE ADJUSTMENTS AS REQUIRED TO FIT THE DUCTWORK AND PIPING WITHIN THE AVAILABLE SPACE. VERIFY THAT FINAL EQUIPMENT LOCATIONS MEET MANUFACTURER'S RECOMMENDATIONS REGARDING SERVICE CLEARANCE AND PROPER AIRFLOW CLEARANCE AROUND EQUIPMENT.
- REFER TO ARCHITECTURAL DRAWINGS FOR RELATED CONSTRUCTION DETAILS AS APPLICABLE TO THE HVAC SYSTEM. VERIFY CHASES AND PENETRATIONS SHOWN ON ARCHITECTURAL DRAWINGS THAT ARE INTENDED FOR DUCTWORK AND PIPING MEET REQUIREMENTS.
- COORDINATE LOCATION OF ROOF MOUNTED HVAC EQUIPMENT AND ROOF PENETRATIONS WITH THE ARCHITECTURAL AND STRUCTURAL DRAWINGS.
- INDOOR AIR QUALITY MEASURES: PROTECT INSIDE OF (INSTALLED AND DELIVERED) DUCTWORK AND HVAC UNITS FROM EXPOSURE TO DUST, DIRTY PAINT AND MOISTURE. REPLACE INSULATION THAT HAS BECOME WET AT ANY TIME DURING CONSTRUCTION. DRYING THE INSULATION IS NOT ACCEPTABLE. SEAL ANY TEARS OR JOINTS OF INTERNAL FIBERGLASS INSULATION. REMOVE DEBRIS FROM CEILING/RETURN AIR FLEEN INCLUDING DUST. AN INDEPENDENT PROFESSIONAL DUCT CLEANING COMPANY SHALL VACUUM CLEAN ANY DUCTWORK CONNECTED TO HVAC UNITS THAT WERE OPERATED DURING CONSTRUCTION. REMOVE ALL NEW FILTERS AND INSTALL AND PRIOR TO TURNING SYSTEM OVER TO THE OWNER. THE INTERNAL SURFACES AND ASSOCIATED COILS OF ANY HVAC UNITS THAT WERE OPERATED SHALL ALSO BE CLEANED.
- INSTALL DUCTWORK AND PIPING PARALLEL TO BUILDING COLUMN LINES UNLESS OTHERWISE SHOWN OR NOTED.
- OVERHEAD HANGERS AND SUPPORTS FOR EQUIPMENT, DUCTWORK AND PIPING SHALL BE FASTENED TO BUILDING JOISTS OR BEAMS. DO NOT ATTACH HANGERS AND SUPPORTS TO THE ABOVE FLOOR SLAB OR ROOF EXCEPT WHERE CONCRETE INSERTS IN CONCRETE SLABS ARE ALLOWED BY THE SPECIFICATIONS.
- COORDINATE LOCATION OF EQUIPMENT SUPPORTS WITH LOCATION OF EQUIPMENT ACCESS PANELS/DOORS TO ENABLE SERVICE OF EQUIPMENT AND/OR FILTER REPLACEMENT.
- SEAL PENETRATIONS THROUGH THE BUILDING COMPONENTS IN ACCORDANCE WITH THE CONTRACT SPECIFICATIONS. FIREPROOF PENETRATIONS THROUGH FIRE RATED COMPONENTS IN ACCORDANCE WITH ALL REQUIREMENTS.
- COORDINATE THE EXACT MOUNTING SIZE AND FRAME TYPE OF DIFFUSERS, REGISTERS AND GRILLES WITH THE SUPPLIER TO MEET THE CEILING, WALL AND DUCT INSTALLATION REQUIREMENTS.
- ADJUST LOCATION OF CEILING DIFFUSERS, REGISTERS AND GRILLES AS REQUIRED TO ACCOMMODATE FINAL CEILING GRID AND LIGHTING LOCATIONS.
- LOCATE AND SET THERMOSTATS, TEMPERATURE SENSORS, AND HUMIDITY SENSORS AT LOCATIONS SHOWN ON PLANS. INSTALL THERMOSTAT WITH TOP OF DEVICE AT MAXIMUM 46" AFF TO MEET ADA REQUIREMENTS UNLESS NOTED OTHERWISE ON PLANS.
- COORDINATE THE LOCATION AND ELEVATION OF WALL-MOUNTED DEVICES WITH PRESENTATION BOARDS, DISPLAY CABINETS, SHELVES OR OTHER COMPONENTS SHOWN ON THE ARCHITECTURAL DRAWINGS THAT ARE TO BE INSTALLED UNDER OTHER DIVISIONS. CONTRACTOR WILL NOT BE RESPONSIBLE FOR RELOCATION OF WALL-MOUNTED DEVICES CAUSED BY A LACK OF COORDINATION.
- PROVIDE A MANUAL BALANCING DAMPER IN EACH DUCT TAKEOFF FROM SUPPLY, RETURN, OUTDOOR AND EXHAUST AIR DUCTS.
- PROVIDE A PREFABRICATED 45 DEGREE, HIGH EFFICIENCY, RECTANGULAR AROUND BRANCH DUCT TAKEOFF FITTING FOR BRANCH DUCT CONNECTIONS AND TAKE-OFFS TO INDIVIDUAL DIFFUSERS, REGISTERS AND GRILLES. PROVIDE WITH INTEGRAL MANUAL BALANCING DAMPER AND LOCK QUADRANT WHERE INDICATED ON PLANS.
- BRANCH DUCTWORK TO AIR OUTLETS SHALL BE SAME SIZE AS OUTLET NECK SIZE UNLESS OTHERWISE NOTED.
- REFER TO SPECIFICATIONS FOR DUCTWORK AND PIPING INSULATION REQUIREMENTS. DUCT SIZES ON MECHANICAL PLANS INDICATE CLEAR INSIDE AIRFLOW DIMENSIONS. INCREASE SHEET METAL SIZES ACCORDINGLY TO ACCOUNT FOR THICKNESS OF DUCT LINER.
- FLEXIBLE DUCTWORK SHALL NOT EXCEED 5'-0" IN LENGTH AND SHALL BE INSTALLED AND SUPPORTED TO AVOID SHARP BENDS AND SAGGING. REFER TO SPECIFICATIONS FOR ADDITIONAL REQUIREMENTS.
- RIGIDLY SUSPEND UNIT HEATER FROM STRUCTURE WITH SUPPORTING ANGLES AND ALL-THREAD HANGING RODS IN ACCORDANCE WITH MANUFACTURER'S RECOMMENDATIONS.
- PROVIDE EQUIPMENT VENTS AND FLUES PER EQUIPMENT MANUFACTURERS RECOMMENDATIONS AND EQUIPMENT SPECIFICATIONS. KEEP PENETRATIONS THROUGH ROOF A MINIMUM OF 10'-0" FROM HVAC EQUIPMENT FRESH AIR INLETS AND 2'-0" FROM PARAPETS.
- PROVIDE TYPE I GREASE HOOD EXHAUST DUCTWORK OF MINIMUM 16 GAUGE BLACK IRON WITH LIQUID TIGHT WELDS, WITH ACCESS PANELS FOR GREASE CLEANING AS REQUIRED BY APP 66 AND LOCAL CODES. SLOPE DUCT BACK TOWARDS HOOD AT MINIMUM OF 1/4" PER LINEAL FOOT MAINTAINING 18" CLEARANCE TO COMBUSTIBLE MATERIALS. INSTALL GREASE DUCTS IN AN APPROVED FIRE-RATED ENCLOSURE SEPARATED FROM THE EXHAUST DUCT BY A MINIMUM OF 6" AND MAXIMUM OF 12". VENTILATE ENCLOSURE TO THE OUTSIDE AIR IF REQUIRED BY CODE. PROVIDE AN APPROVED WRAP SYSTEM IN LIEU OF THE RATED DUCT ENCLOSURE SYSTEM. DUCT WRAP SYSTEM SHALL MEET UL REQUIREMENTS FOR GREASE DUCT ENCLOSURES.
- PROVIDE A NEW SET OF AIR FILTERS IN UNITS PRIOR TO TESTING, ADJUSTING AND BALANCING AND BEFORE TURNING SYSTEMS) OVER TO OWNER.
- INSTALL ALL EXPOSED DUCTWORK TIGHT TO ROOF STRUCTURE AS POSSIBLE, UNO

MECHANICAL SYMBOLS

THIS IS A MASTER LEGEND AND NOT ALL SYMBOLS OR ABBREVIATIONS ARE USED. VLS

STANDARD MOUNTING HEIGHT

THERMOSTATS (USER ADJUSTABLE) 46"
CONTROLS 46"

INSTALL DEVICES AT THE MOUNTING HEIGHTS SHOWN ABOVE UNO IN THE CONSTRUCTION DOCUMENTS. MOUNTING HEIGHTS LISTED ABOVE OR ELSEWHERE IN THE CONSTRUCTION DOCUMENTS ARE AFF OR AFG TO TOP OF THE DEVICE UNO. ALL DEVICES SHALL BE INSTALLED IN COMPLIANCE WITH CURRENT ADA AND LOCAL REQUIREMENTS.

ANNOTATION

MECHANICAL PLAN NOTE CALLOUT

MECHANICAL EQUIPMENT DESIGNATION (CONTRACTOR FURNISHED AND INSTALLED UNLESS NOTED OTHERWISE)

CONNECTION POINT OF NEW WORK TO EXISTING

DETAIL REFERENCE. UPPER NUMBER INDICATES DETAIL NUMBER LOWER NUMBER INDICATES SHEET NUMBER

SECTION CUT DESIGNATION

ABBREVIATIONS

A/C	AIR CONDITIONING	L	LOUVER
AFC	ABOVE FINISHED CEILING	LAT	LEAVING AIR TEMPERATURE
AFF	ABOVE FINISHED FLOOR	LWB	LEAVING WET BULB
AFG	ABOVE FINISHED GRADE	MAU	MAKE-UP AIR UNIT
AHJ	AUTHORITY HAVING JURISDICTION	MAX	MAXIMUM
AHU	AIR HANDLING UNIT	MBH	1000 BTU PER HOUR
AP	ACCESS PANEL	MD	MOTORIZED DAMPER
BD	BACKDRAFT DAMPER	MFR	MANUFACTURER
BFC	BELOW FINISHED CEILING	MIN	MINIMUM
BFF	BELOW FINISHED FLOOR	N/A	NOT APPLICABLE
BFG	BELOW FINISHED GRADE	NOM	NORMAL
BHP	BRAKE HORSEPOWER	NC	NOISE CRITERIA
BODT	BOTTOM OF DUCT	NF	NON-FUSED
BOS	BOTTOM OF STRUCTURE	NTC	NOT IN CONTRACT
BTU	BRITISH THERMAL UNIT	OA	OUTSIDE AIR
CFM	CUBIC FEET PER MINUTE	QTY	QUANTITY
CJ	CONDENSING UNIT	RA	RETURN AIR
CU	CONDENSING UNIT	RD	RETURN DUCT
DB	DECIBELS	REA	RELIEF AIR
DBA	DECIBEL AVERAGE	RFR	REFRIGERANT
DISC	DISCONNECT	RH	RELATIVE HUMIDITY
DN	DOWN	RPM	REVOLUTIONS PER MINUTE
DX	DIRECT EXPANSION	RTU	ROOFTOP UNIT
(E)	EXISTING	SA	SUPPLY AIR
EA	EXHAUST AIR	SD	SMOKE DUCT DETECTOR
EAT	ENTERING AIR TEMPERATURE	SH	STATIC PRESSURE
EAH	EXHAUST FAN	SH	SENSIBLE HEAT CAPACITY
EFF	EFFICIENCY	SOW	SCOPE OF WORK
EMS	ENERGY MANAGEMENT SYSTEM	TBD	TO BE DETERMINED TRANSFER FAN
ESP	EXTERNAL STATIC PRESSURE	TF	TO FLOOR ABOVE
ETR	EXISTING TO REMAIN	TFA	TO FLOOR BELOW
EWB	ENTERING WET BULB	TFB	TOTAL HEAT CAPACITY
FCU	FAN COIL UNIT	TSP	TOTAL STATIC PRESSURE
FFA	FROM FLOOR ABOVE	TH	TYPICAL
FFB	FROM FLOOR BELOW	UH	UNIT HEATER
FF	FRONT OF FLOOR	UNO	UNLESS NOTED OTHERWISE
FFH	FRONT OF HOUSE	UNO	VARIABLE AIR VOLUME
FPI	FINS PER INCH	VEL	VELOCITY
FFM	FEET PER MINUTE	VFL	VARIABLE FREQUENCY DRIVE
GC	GENERAL CONTRACTOR	W/	WITH
HP	HORSEPOWER	WO	WITHOUT
HTG	HEATING	WTO	WET BULB
IN WC	INCHES OF WATER COLUMN	WC	WATER COLUMN

HVAC DUCTWORK AND ACCESSORIES

DUCTWORK/EQUIPMENT TO BE REMOVED OR RELOCATED

EXISTING DUCTWORK/EQUIPMENT TO REMAIN

LINEAR SLOT DIFFUSER

INSULATED FLEXIBLE DUCT (MAX. 5'-0" LONG)

BRANCH DUCT WITH 45° RECTANGLE-ROUND BRANCH FITTING AND MANUAL VOLUME DAMPER

ELBOW WITH TURNING VANES

BRANCH DUCT WITH BELL-MOUTH FITTING & MANUAL VOLUME CONTROL DAMPER

DUCT UP

DUCT DOWN

EQUIPMENT WITH FLEXIBLE DUCT CONNECTION

10" (NECK SIZE) CSD-1 (TYPE) 300 CFM (CFM OF SUPPLY DIFFUSER OR REGISTER)

24x24 (NECK SIZE) CEG-1 (TYPE) 800 CFM (CFM OF EXHAUST GRILLE)

MANUAL VOLUME DAMPER

SQUARE TO ROUND TRANSITION

DUCT MOUNTED SMOKE DETECTOR (SD=SUPPLY/RD=RETURN)

ROUND DUCT TAG INDICATING DIAMETER

RECTANGULAR DUCT TAG INDICATING INTERNAL DUCT DIMENSIONS.

FLAT OVAL DUCT TAG INDICATING INTERNAL DUCT DIMENSIONS

RISER DESIGNATION

FIRE DAMPER

FIRE SMOKE DAMPER

SMOKE DAMPER

AIR BALANCE SCHEDULE

EXHAUST EQUIPMENT	AREA/EQUIPMENT SERVED	EXHAUST (CFM)	TOTALS (CFM)	
EF-1	DELI PREP	790	1,980	
EF-2	MEN / WOMEN RESTROOM EXHAUST	500		
EF-3	DELI PREP EQUIPMENT EXHAUST	460		
ERV-1	FRONT OF HOUSE OFFICES ERV EXHAUST AIR	230		
OUTDOOR AIR EQUIPMENT	AREA/EQUIPMENT SERVED	SUPPLY AIR (CFM)		DESIGN OA (CFM)
DHU-1	MAIN SALES	4,000	2,130	53.3%
RTU-1	MAIN SALES	4,000	0	0.0%
RTU-2	DELI PREP	2,000	310	15.5%
RTU-3	STOCK / RECEIVING	4,000	370	9.3%
IU-1	CLICK COLLECT & RR	700	0	0.0%
IU-2	CASHIER	175	0	0.0%
IU-3	BOOKKEEPING	175	0	0.0%
IU-4	VESTIBULE	700	0	0.0%
IU-5	BREAK ROOM	280	0	0.0%
IU-6	MOTHER'S ROOM	175	0	0.0%
IU-7	SCAN	350	35	10.0%
IU-8	MANAGER	350	20	5.7%
ERV-1	FRONT OF HOUSE OFFICES	230	230	100.0%
TOTAL AIRFLOW		17,135	3,095	18.1%
TOTAL POSITIVE AIR FLOW (CFM)				1115
PERCENT POSITIVE AIR FLOW				36%

GRILLE, REGISTER AND DIFFUSER SCHEDULE

MARK	MANUFACTURER	MODEL	FACE TYPE	MOUNTING LOCATION	FACE SIZE (IN)	MAX. NC	MAX. PRESS. DROP (IN. W.C.)	NOTES
SD-1	TITUS	MCD	MODULAR	GYP.	12x12	25	0.1	A-D,G,H,L
SD-2	TITUS	MCD	MODULAR	LAY-IN	24x24	25	0.1	A,D,G,H
SD-3	TITUS	DL	DRUM	DUCT	SEE PLAN	30	0.1	A,E,F,J,K
SD-4	TITUS	300F-S	LOUVERED	DUCT	NECK +1-3/4	30	0.1	A,C,F,J,K
SD-5	TITUS	300RL	LOUVERED	WALL	NECK +1-3/4	30	0.1	A,C,E,F,G,M
RG-1	TITUS	350RL	LOUVERED	LAY-IN	24x24	25	0.1	A,C,D,G,H
RG-2	TITUS	350RL	LOUVERED	GYP.	12x12	25	0.1	A,C,D,G,H,L
EG-1	TITUS	350RL	LOUVERED	GYP.	12x12	25	0.1	A,C,E,G,H,L,L
TG-1	TITUS	350RL	LOUVERED	WALL	NECK +1-3/4	25	0.1	A,C,E,G,M
TG-2	TITUS	350RL	LOUVERED	GYP.	12x12	25	0.1	A,C,D,G,H,L

- A. NECK SIZE SHOWN ON DRAWINGS.
- B. 4-WAY THROW PATTERN UNLESS OTHERWISE SHOWN ON DRAWINGS.
- C. BRANCH DUCT SIZE SHALL BE SAME AS NECK SIZE UNLESS OTHERWISE SHOWN ON DRAWINGS.
- D. BAKED ENAMEL FINISH, WHITE TO MATCH CEILING COLOR.
- E. FRONT BLADES PARALLEL TO LONG DIMENSION.
- F. DOUBLE DEFLECTION BARS SHALL BE ADJUSTABLE.
- G. PROVIDE NECK FOR DUCT CONNECTION.
- H. FRAME TYPE TO MATCH CEILING CONSTRUCTION, COORDINATE WITH ARCHITECTURAL REFLECTED CEILING PLAN.
- I. PROVIDE OPPOSED BLADE DAMPER ADJUSTABLE FROM FACE OF DEVICE.
- J. ALUMINUM CONSTRUCTION AND ALUMINUM FINISH.
- L. PROVIDE RAPID MOUNT FRAME FOR GYP. CEILING INSTALLATION.
- M. BAKED ENAMEL FINISH TO MATCH WALL COLOR.

FAN SCHEDULE

MARK	SERVICE (EA, RA, TA)	MANUFACTURER	MOUNTING	MODEL	CFM	ESP (IN)	DRIVE (BELT/DIRECT)	MIN. HP	FAN RPM	VFD (Y/N)	ELECTRICAL V/PH	DISC. TYPE	WEIGHT (LBS)	NOTES
EF-1	EA	GREASEMASTER	ROOF	GMDU50H	790	1.15	DIRECT	1/2	1460	N	115/1	NON-FUSED	79	B-F
EF-2	EA	GREASEMASTER	ROOF	GMDR12H	500	0.50	DIRECT	1/4	1520	N	115/1	NON-FUSED	53	A-D,F
EF-3	EA	GREASEMASTER	ROOF	GMDU33H	460	0.80	DIRECT	1/3	1447	N	115/1	NON-FUSED	68	A-D,F
TAF-1	TA	GREASEMASTER	PLENUM	GMSIF11DD	550	0.50	DIRECT	1/2	1273	N	115/1	NON-FUSED	127	B-D,F,G

- A. PROVIDE WITH MINIMUM 8" HIGH ROOF CURB, BIRDSCREEN AND BACKDRAFT DAMPER.
- B. PROVIDE WITH FACTORY MOUNTED DISCONNECT SWITCH.
- C. STARTERS FOR ALL MOTORS SHALL BE FURNISHED INTEGRAL WITH UNIT.
- D. REFER TO MECHANICAL SYSTEMS SUMMARY, SETPOINTS, AND CONTROL MATRIX ON M000 FOR FAN INTERLOCKS AND CONTROL.
- E. PROVIDE WITH MINIMUM 12" HIGH ROOF CURB, VENTED ROOF CURB EXTENSION FOR 40" MINIMUM DISCHARGE HEIGHT ABOVE ROOF SURFACE, GREASE TRAP AND DRAIN CONNECTION, HINGE KIT, AND INTEGRAL MOTOR OVERLOAD PROTECTION.
- F. PROVIDE WITH ELECTRICALLY COMMUTATED MOTOR (ECM) AND INTERNAL MOUNTED SPEED CONTROLLER.
- G. PROVIDE RUBBER IN SHEAR ISOLATION AND ALL-THREAD HANGING RODS.

MINI SPLIT INDOOR UNIT SCHEDULE (HEAT PUMP)

MARK	MANUFACTURER	MODEL	UNIT TYPE	ASSOCIATED OUTDOOR UNIT	SUPPLY FAN CFM	TH (MBH)	SH (MBH)	EAT (°F DB) (°F WB)	(°F DB) (°F WB)	REFR. TYPE	MIN OUT (MBH)	AMBIENT (DB)	EAT (°F DB)	MIN O/A (CFM)	ELECTRICAL V/PH	DISC. TYPE	WEIGHT (LBS)	NOTES	
IU-1	CARRIER	45MBAQ24	DUCTED	CU-1	700	18.1	14.8	75.0	62.5	55.6	R-454B	21.3	26.9	70.0	0	208/1	NON-FUSED	81	A-H
IU-2	CARRIER	45MBAQ12	WALL MOUNTED	CU-1	175	2.4	2.2	75.0	62.5	63.4	R-454B	1.8	26.9	70.0	0	208/1	NON-FUSED	23	A-F
IU-3	CARRIER	45MAHAQ06	WALL MOUNTED	CU-1	175	2.5	2.3	75.0	62.5	62.8	R-454B	1.9	26.9	70.0	0	208/1	NON-FUSED	23	A-F
IU-4	CARRIER	45MBAQ24	DUCTED	CU-2	700	18.2	14.1	85.0	70.7	66.6	R-454B	24.7	26.9	70.0	0	208/1	NON-FUSED	81	A-H
IU-5	CARRIER	45MBAQ12	DUCTED	CU-2	280	5.8	4.8	75.0	62.5	59.2	R-454B	0.5	26.9	70.0	0	208/1	NON-FUSED	64	A-H
IU-6	CARRIER	45MAHAQ06	WALL MOUNTED	CU-2	175	0.9	0.7	75.0	62.5	71.4	R-454B	0.1	26.9	70.0	0	208/1	NON-FUSED	23	A-F
IU-7	CARRIER	45MBAQ12	DUCTED	CU-3	350	10.6	8.0	75.8	64.5	55.0	R-454B	5.1	26.9	65.7	35	208/1	NON-FUSED	64	A-H
IU-8	CARRIER	45MBAQ12	DUCTED	CU-3	350	8.6	7.3	75.5	63.6	56.4	R-454B	6.3	26.9	67.5	20	208/1	NON-FUSED	64	A-H

MODEL NUMBERS SHALL NOT BE CONSIDERED COMPLETE AND MATERIAL SHALL NOT BE ORDERED BY MANUFACTURER AND MODEL NUMBERS ONLY. REVIEW THE COMPLETE DESCRIPTION, NOTES AND SPECIFICATIONS TO DETERMINE THE EXACT MATERIAL AND ACCESSORIES TO BE ORDERED. THE MANUFACTURERS LISTED ARE THE BASIS FOR THE DESIGN.

- A. REFER TO SHEET MECHANICAL SYSTEMS SUMMARY, SETPOINTS, AND CONTROL MATRIX ON SHEET M000 FOR CLIMATE CRITERIA USED FOR SELECTION.
- B. REFER TO MINI SPLIT OUTDOOR UNIT SCHEDULE FOR ADDITIONAL INFORMATION.
- C. INDOOR UNIT POWERED THROUGH OUTDOOR UNIT. WIRING BETWEEN INDOOR AND OUTDOOR UNITS PROVIDED BY DIVISION 26 CONTRACTOR. COORDINATE CONDUCTOR QUANTITY WITH MANUFACTURER'S REQUIREMENTS.
- D. DISCONNECT SWITCH FOR INDOOR UNIT PROVIDED BY DIVISION 26 CONTRACTOR.
- E. PROVIDE FIRST YEAR LABOR WARRANTY.
- F. PROVIDE WITH WIRED THERMOSTAT FOR UNIT.
- G. PROVIDE RESERVOIR AND DRAIN PAN LEVEL SENSOR, FACTORY MOUNTED.
- H. PROVIDE RUBBER IN SHEAR ISOLATION AND ALL-THREAD HANGING RODS.

MINI SPLIT OUTDOOR UNIT SCHEDULE (HEAT PUMP)

MARK	MANUFACTURER	MODEL	ASSOCIATED INDOOR UNIT	REFR. TYPE	TH (MBH)	AMBIENT (DB)	MIN EFF (EER2) (SEER2)	CAP (MBH)	HEATING CAPACITY (DB) (HSPF2)	MCA	MOCP	ELECTRICAL V/PH	DISC. TYPE	WEIGHT (LBS)	NOTES		
CU-1	CARRIER	37MHAQ30	IU-1, 2, 3	R-454B	23.0	96.2	13.2	24	25.0	26.9	10.7	40	208/1	NON-FUSED	212	ALL	
CU-2	CARRIER	37MHAQ48	IU-4, 5, 6	R-454B	24.9	96.2	11.7	20.5	25.3	26.9	11.0	43	45	208/1	NON-FUSED	247	ALL
CU-3	CARRIER	37MHAQ18	IU-7, 8	R-454B	19.2	96.2	13.0	20.0	11.4	26.9	10.0	17.5	20	208/1	NON-FUSED	137	ALL

MODEL NUMBERS SHALL NOT BE CONSIDERED COMPLETE AND MATERIAL SHALL NOT BE ORDERED BY MANUFACTURER AND MODEL NUMBERS ONLY. REVIEW THE COMPLETE DESCRIPTION, NOTES AND SPECIFICATIONS TO DETERMINE THE EXACT MATERIAL AND ACCESSORIES TO BE ORDERED. THE MANUFACTURERS LISTED ARE THE BASIS FOR THE DESIGN.

- A. REFER TO SHEET MECHANICAL SYSTEMS SUMMARY, SETPOINTS, AND CONTROL MATRIX ON SHEET M000 FOR CLIMATE CRITERIA USED FOR SELECTION.
- B. REFER TO MINI SPLIT INDOOR UNIT SCHEDULE FOR ADDITIONAL INFORMATION.
- C. INDOOR UNIT POWERED THROUGH OUTDOOR UNIT. WIRING BETWEEN INDOOR AND OUTDOOR UNITS PROVIDED BY DIVISION 26 CONTRACTOR. COORDINATE CONDUCTOR QUANTITY WITH MANUFACTURER'S REQUIREMENTS.
- D. CONTRACTOR SHALL VERIFY WITH EQUIPMENT SUPPLIER EXACT ROUTING AND SIZE OF INSULATED REFRIGERANT PIPING. INSTALL PER MANUFACTURER'S RECOMMENDATIONS.
- F. PROVIDE PRE-ENGINEERED ROOF EQUIPMENT SUPPORTS WITH MINIMUM HEIGHT REQUIRED TO MAINTAIN BOTTOM OF EQUIPMENT A MINIMUM OF 4 INCHES ABOVE FINISHED ROOF SURFACE. COORDINATE WITH ROOF INSULATION THICKNESS AND ROOF TAPER AT INSTALLED LOCATION.
- G. PROVIDE FIRST YEAR LABOR WARRANTY.
- H. SELECT EQUIPMENT FOR ELEVATION OF 173 FEET ABOVE SEA LEVEL.
- I. PROVIDE LOW AMBIENT KIT FOR COOLING OPERATION DOWN TO 25°F.

ELECTRIC DUCT HEATER SCHEDULE

MARK	MANUFACTURER	MODEL	MIN OUT (MBH)	NOM INPUT (KW)	SIZE (W" x H")	MAX SPD (IN)	CFM	MAX TEMP (°F)	DISC TYPE	V/PH	NOTES
EDH-1	INDEECO	OJA	4.6	1.5	12 X 6	0.1	230	18	NON-FUSED	208/1	ALL

MODEL NUMBERS SHALL NOT BE CONSIDERED COMPLETE AND MATERIAL SHALL NOT BE ORDERED BY MANUFACTURER AND MODEL NUMBERS ONLY. REVIEW THE COMPLETE DESCRIPTION, NOTES AND SPECIFICATIONS TO DETERMINE THE EXACT MATERIAL AND ACCESSORIES TO BE ORDERED. THE MANUFACTURERS LISTED ARE THE BASIS FOR THE DESIGN.

- A. UNIT AIR PRESSURE DROP SHALL NOT EXCEED SCHEDULED VALUE.
- B. SUPPORT UNIT FROM STRUCTURE WITH ALL-THREAD HANGING RODS.
- C. PROVIDE FACTORY MOUNTED DISCONNECT INSTALLED ON SERVICE SIDE OF UNIT.
- D. PROVIDE AIRFLOW PROVING SWITCH AND THERMAL OVERLOAD PROTECTION.
- E. PROVIDE MAGNETIC CONTACTORS.
- F. PROVIDE SCR CONTROLS DESIGNED TO MODULATE THE HEATER OUTPUT FROM 0 TO 100 PERCENT CAPACITY.
- G. PROVIDE CONTROL POWER TRANSFORMER AND LOW VOLTAGE DUCT THERMOSTAT WITH STAGES AS REQUIRED TO CONTROL HEATER.

DEHUMIDIFICATION UNIT SCHEDULE (NATURAL GAS HEAT)

MARK	MANUFACTURER	MODEL	REFR. TYPE	SUPPLY FAN FAN TYPE	CFM	ESP (IN)	MIN HP (Y/N)	VFD (Y/N)	TH (MBH)	SH (MBH)	EAT (DB/WB)	COIL LAT (DB/WB)	DEHUMIDIFICATION (ASHRAE 0.4%) TH (MBH)	SH (MBH)	EAT (DB/WB)	MAX LAT (GR/LB)	MIN. O/A (CFM)	MIN. EFF.	HEAT EXCHANGER EFF. (%)	NOM. INPUT (MBH)	EAT	MIN. NO. STAGES	MCA	MOCP	V/PH	DISC. TYPE	DIMENSIONS (LxWxH)	WEIGHT (LBS)	NOTES		
DHU-1	ADDISON	PRAK24053	R-454B	DWDI BIA	4,000	1.00	3	Y	208.4	133.7	85 / 69	54 / 52	256.4	111.3	78 / 72	54.1	2130	13.8	EER	180	80	250	47.2	5-1	127.0	150	208/3	NON-FUSED	116x87x77	3,459	ALL

- A. REFER TO MECHANICAL SYSTEMS SUMMARY, SETPOINTS, AND CONTROL MATRIX ON SHEET M0.0 FOR INTERLOCKS, CONTROL, AND CLIMATE CRITERIA USED FOR SELECTION. REFER TO RESPONSIBILITY LIST ON ARCHITECTURAL SHEET(S) FOR FURNISHED BY AND INSTALLED BY.
- B. STARTERS FOR ALL MOTORS SHALL BE FURNISHED INTEGRAL WITH UNIT.
- C. PROVIDE 14" PITCHED INSULATED ROOF CURB. CURB SHALL HAVE FLORIDA PRODUCT APPROVAL AND BE DESIGNED TO WITHSTAND HURRICANE WIND FORCES.
- D. COORDINATE SIZE OF CONDUCTOR TERMINATION LUGS WITH CONDUCTOR SIZES SHOWN ON ELECTRICAL DRAWINGS.
- E. PROVIDE UNPOWERED DUPLEX RECEPTACLE MOUNTED ON UNIT WITH THRU-THE-BASE POWER SUPPLY. FIELD WIRING PROVIDED BY ELECTRICAL CONTRACTOR.
- F. MANUFACTURER SHALL FURNISH INTEGRAL RETURN AIR DUCT SMOKE DETECTOR AND FURNISH SUPPLY AIR DUCT SMOKE DETECTOR SHIPPED LOOSE AND FIELD INSTALLED. FURNISH REMOTE TEST STATIONS, SHIPPED LOOSE AND FIELD INSTALLED.
- G. SPECIFIED FAN ESP ACCOUNTS FOR DUCT LOSSES EXTERNAL TO UNIT.
- H. SELECT EQUIPMENT FOR ELEVATION OF 173 FEET ABOVE SEA LEVEL.
- I. PROVIDE WITH FACTORY INSTALLED DRAIN PAN OVERFLOW SWITCH FOR UNIT SHUT DOWN UPON DETECTION OF WATER.
- J. PROVIDE FACTORY INSTALLED SUPPLY FAN PROVING SWITCH.
- K. EMS CONTRACTOR TO INSTALL POWERWALL SUPPLIER PROVIDED TEMPERATURE SENSOR, AND HUMIDITY SENSOR. REFER TO ELECTRICAL SHEETS FOR EMS CONTROL DIAGRAM.
- L. COOLING COIL LAT IS LEAVING AIR TEMPERATURE OF COIL.
- M. PROVIDE HEATER TO MEET OR EXCEED SCHEDULED MINIMUM MBH OUTPUT. NOMINAL INPUT IS BASED ON LISTED MANUFACTURER'S STANDARD PRODUCT. COORDINATE EQUIPMENT GAS LOAD WITH PLUMBING CONTRACTOR IF DIFFERENT FROM THAT SCHEDULED.
- N. PROVIDE FACTORY RECOMMENDED SEISMIC/WIND HOLD DOWN BRACKETS.
- O. PROVIDE GUARDS TO PROTECT CONDENSER COIL FROM HAIL OR OTHER DAMAGE.
- P. PROVIDE FACTORY MOUNTED NON-FUSED DISCONNECT.
- R. FACTORY TO PROVIDE DUCT MOUNTED TEMPERATURE SENSOR SHIPPED LOOSE WITH UNIT. EMS CONTRACTOR TO INSTALL TEMPERATURE SENSOR IN DUCTWORK AT MINIMUM 8'-0" FROM UNIT OUTLET. SEE M200 FOR APPROXIMATE LOCATION.
- S. PROVIDE 2" MERV 13, EFFICIENT THROU-WAY FILTERS.

ROOFTOP UNIT SCHEDULE (NATURAL GAS HEAT)

MARK	MANUFACTURER	MODEL	UNIT TYPE	SUPPLY FAN FAN TYPE	CFM	ESP (IN)	MIN HP (Y/N)	MSAV (Y/N)	DRIVE (BELT/DIRECT)	REFR. TYPE	TH (MBH)	SH (MBH)	EAT (DB/WB)	COIL LAT (DB/WB)	DEHUMIDIFICATION (ASHRAE 0.4%) TH (MBH)	SH (MBH)	EAT (DB/WB)	MIN. O/A (CFM)	MIN. EFF.	HEAT EXCHANGER EFF. (%)	NOM. INPUT (MBH)	EAT	MIN. NO. STAGES	MCA	MOCP	V/PH	DISC. TYPE	DIMENSIONS (LxWxH)	WEIGHT (LBS)	NOTES		
RTU-1	LENNOX	LGT120H5	SINGLE ZONE	FC	4,000	3.75	0.75	Y	DIRECT	R-454B	89.7	80.4	72	60	54	52	104.0	80	130	70	2	0	12	1	48	60	208/3	NON-FUSED	101x60x47	1322	A-R, U-W, Y	
RTU-2	LENNOX	LGT072H5	SINGLE ZONE	FC	2,000	1.50	0.75	Y	DIRECT	R-454B	65.7	40.6	76	65	57	54	87.0	80	108	63	2	3	10	12	1	32	50	208/3	NON-FUSED	85x47x47	831	A-W
RTU-3	LENNOX	LGT120H5	SINGLE ZONE	FC	4,000	3.75	0.75	Y	DIRECT	R-454B	103.1	80.8	76	64	57	55	104.0	80	130	66	2	3	10	12	1	48	60	208/3	NON-FUSED	101x60x47	1408	A-V, X

MODEL NUMBERS AND NOMINAL TONS LISTED SHALL NOT BE CONSIDERED COMPLETE AND MATERIAL SHALL NOT BE ORDERED BY MANUFACTURER, MODEL NUMBERS, OR NOMINAL TONS ONLY. REVIEW THE COMPLETE DESCRIPTION, NOTES AND SPECIFICATIONS TO DETERMINE THE EXACT MATERIAL AND ACCESSORIES TO BE ORDERED. THE MANUFACTURERS LISTED ARE THE BASIS FOR THE DESIGN.

- A. REFER TO MECHANICAL SYSTEMS SUMMARY, SETPOINTS, AND CONTROL MATRIX ON SHEET M000 FOR CLIMATE CRITERIA, INTERLOCKS AND CONTROLS. REFER TO RESPONSIBILITY LIST ON ARCHITECTURAL SHEET(S) FOR FURNISHED BY AND INSTALLED BY.
- B. REFRIGERATION CONTRACTOR SHALL INSTALL SENSORS AS SCHEDULED ON SENSOR MATRIX ON SHEET M000. REFER TO ELECTRICAL SHEETS FOR EMS CONTROL DIAGRAM.
- C. SELECT EQUIPMENT FOR ELEVATION OF 173 FEET ABOVE SEA LEVEL.
- D. PROVIDE 2" MERV 13, EFFICIENT PLEATED THROUWAY AIR FILTERS.
- E. SPECIFIED FAN ESP ACCOUNTS FOR DUCT LOSSES EXTERNAL TO UNIT.
- F. STARTERS FOR ALL MOTORS SHALL BE FURNISHED INTEGRAL WITH UNIT.
- G. COORDINATE SIZE OF CONDUCTOR TERMINATION LUGS WITH CONDUCTOR SIZES SHOWN ON ELECTRICAL DRAWINGS.
- H. PROVIDE FACTORY INSTALLED DUPLEX CONVENIENCE RECEPTACLE. CONVENIENCE RECEPTACLE SHALL BE MOUNTED ON UNIT AND FIELD WIRING PROVIDED BY ELECTRICAL CONTRACTOR.
- I. FRONT WITH MANUFACTURER STANDARD THRU-THE-BASE WIRING FOR MAIN POWER SUPPLY AND GENERAL CONVENIENCE RECEPTACLE.
- J. COOLING COIL LAT IS LEAVING AIR TEMPERATURE OF COIL.
- K. MANUFACTURER SHALL FURNISH INTEGRAL RETURN AND SUPPLY AIR SMOKE DETECTORS. FURNISH REMOTE TEST STATIONS, SHIPPED LOOSE AND FIELD INSTALLED.
- L. PROVIDE HEATER TO MEET OR EXCEED SCHEDULED MINIMUM MBH OUTPUT. NOMINAL INPUT IS BASED ON LISTED MANUFACTURER'S STANDARD PRODUCT. COORDINATE EQUIPMENT GAS LOAD WITH PLUMBING CONTRACTOR IF DIFFERENT FROM THAT SCHEDULED.
- M. PROVIDE FACTORY INSTALLED SUPPLY FAN PROVING SWITCH AND HINGED PANELS.
- N. PROVIDE WITH FACTORY INSTALLED DRAIN PAN OVERFLOW SWITCH FOR UNIT SHUT DOWN UPON DETECTION OF WATER.
- O. MECHANICAL CONTRACTOR TO PROVIDE SET UP AND START-UP SERVICES.
- P. SCHEDULED WEIGHT IS THE MAXIMUM ALLOWABLE OPERATING WEIGHT OF THE EQUIPMENT.
- Q. PROVIDE HOT GAS REHEAT COIL FOR DEHUMIDIFICATION CONTROL SEQUENCE.
- R. PROVIDE 14" PITCHED INSULATED ROOF CURB. CURB SHALL HAVE FLORIDA PRODUCT APPROVAL AND BE DESIGNED TO WITHSTAND HURRICANE WIND FORCES.
- U. PROVIDE FACTORY RECOMMENDED SEISMIC/WIND HOLD DOWN BRACKETS.
- V. PROVIDE GUARDS TO PROTECT CONDENSER COIL FROM HAIL OR OTHER DAMAGE.
- W. PROVIDE 0 TO 50% MOTOR OPERATED OUTDOOR AIR RATE.
- X. PROVIDE MOUNTED OUTDOOR AIR DAMPER CAPABLE OF 100% OUTSIDE AIR, INTEGRATED DUAL ENTHALPY ECONOMIZER WITH FAULT DETECTION DIAGNOSTIC, AND INTEGRAL BAROMETRIC RELIEF DAMPER.
- Y. PROVIDE CURB ADAPTER. CURB SHALL HAVE FLORIDA PRODUCT APPROVAL AND BE DESIGNED TO WITHSTAND HURRICANE WIND FORCES.

ENERGY RECOVERY VENTILATION UNIT SCHEDULE

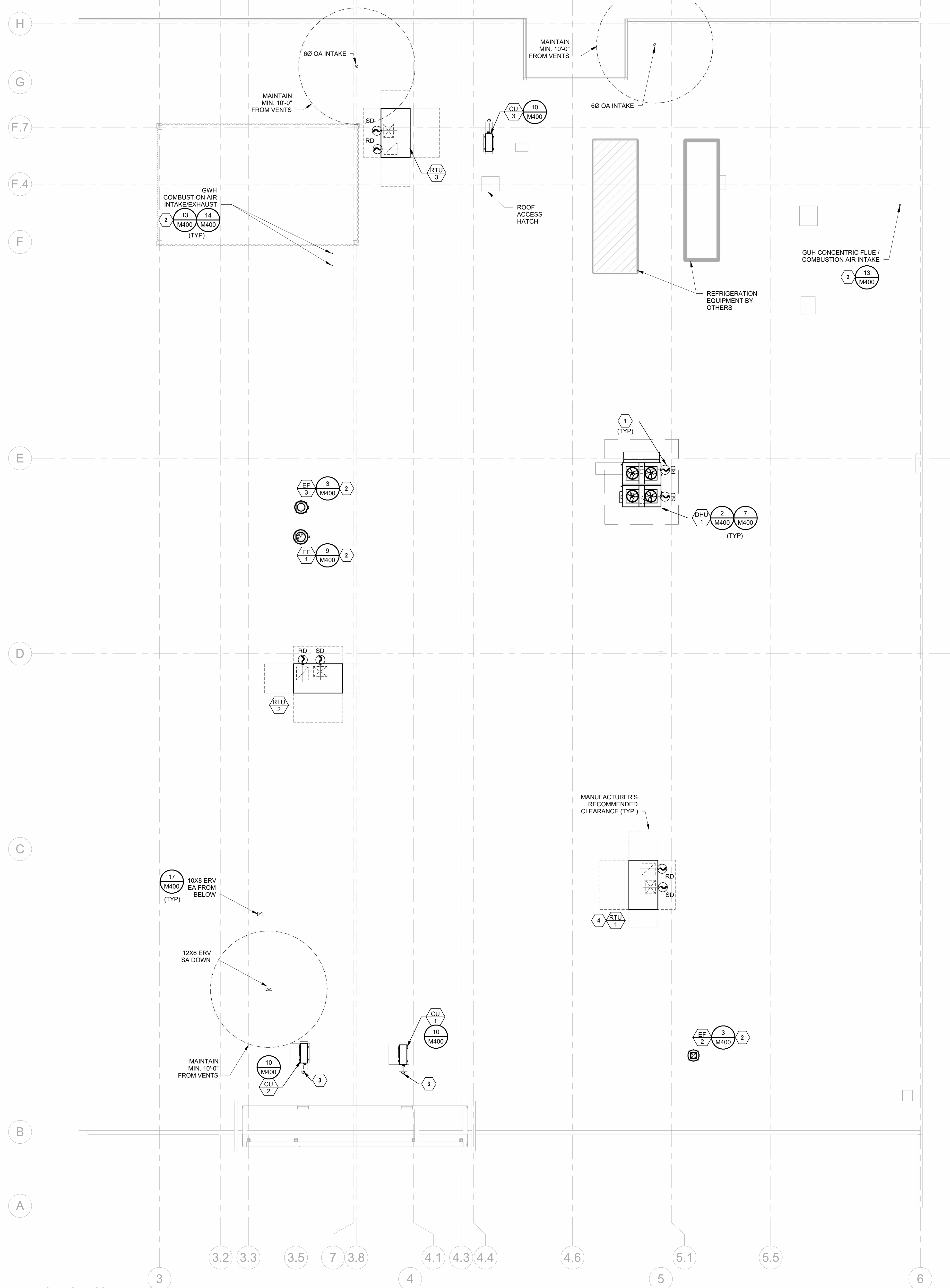
MARK	MANUFACTURER	MODEL	SUPPLY FAN FAN TYPE	CFM	ESP (IN)	NOM HP (Y/N)	VFD (Y/N)	FAN TYPE	EXHAUST FAN CFM	ESP (IN)	NOM HP (Y/N)	VFD (Y/N)	SUMMER EXHAUST EAT (°F DB) (°F WB)	LAT (°F DB) (°F WB)	SUMMER SUPPLY OAT (°F DB) (°F WB)	WINTER EXHAUST EAT (°F DB) (°F WB)	LAT (°F DB) (°F WB)	WINTER SUPPLY OAT (°F DB) (°F WB)	LAT (°F DB) (°F WB)	ELECTRICAL V/PH	DISC. TYPE	WEIGHT (LBS)	NOTES											
ERV-1	GREENHECK	MINVENT-450-VG	ECM	230	0.50	1/4	N	ECM	230	0.50	1/4	N	75.0	62.5	91.4	73.2	96.2	76.4	79.2	66.3	72.0	55.8	36.6	31.7	45.0	37.6	62.6	49.5	115/1	7.1	15	NON-FUSED	160	ALL

MODEL NUMBERS SHALL NOT BE CONSIDERED COMPLETE AND MATERIAL SHALL NOT BE ORDERED BY MANUFACTURER AND MODEL NUMBERS ONLY. REVIEW THE COMPLETE DESCRIPTION, NOTES AND SPECIFICATIONS TO DETERMINE THE EXACT MATERIAL AND ACCESSORIES TO BE ORDERED. THE MANUFACTURERS LISTED ARE THE BASIS FOR THE DESIGN.

- A. PROVIDE 1" MERV 13, PLEATED THROUWAY AIR FILTER IN OUTSIDE AIR AIRSTREAM AND 1" MERV 8, PLEATED THROUWAY AIR FILTER IN RETURN AIRSTREAM.
- B. DISCONNECT SWITCHES PROVIDED BY DIVISION 26 CONTRACTOR.
- C. SCHEDULED WEIGHT IS THE MAXIMUM ALLOWABLE OPERATING WEIGHT OF THE EQUIPMENT.
- D. PROVIDE FIRST YEAR LABOR WARRANTY.

OUTSIDE AIR REQUIREMENTS, 2023 FLORIDA BUILDING CODE - MECHANICAL - 8TH EDITION

SYSTEM DESIGNATION	SYSTEM TAB NAME OR LIST SINGLE	SINGLE-ZONE SYSTEMS ONLY		MULTI-ZONE SYSTEMS ONLY		FLOOR AREA SERVED BY SYSTEM [Aa] (SF)	SYSTEM AVERAGED AREA-BASED OUTDOOR AIR RATE (CFM/SF)	POPULATION (PEOPLE)	SYSTEM AVERAGED PEOPLE-BASED OUTDOOR AIR RATE (CFM/PEOPLE)	REQUIRED OA INTAKE FLOW [Vol] (CFM)	REQUIRED DCV OA INTAKE FLOW [Vol] (CFM)	DESIGN OA INTAKE FLOW [Vol] (CFM)	NOTES
		ASSOCIATED VENTILATION ZONE	ZONE AIR DISTRIBUTION EFFECTIVENESS [Ez]	SYSTEM VENTILATION EFFICIENCY [Ev]	SYSTEM VENTILATION EFFICIENCY [Ev]								
DHU-1	SINGLE ZONE	MAIN SALES BACK	0.80	-	7,089	0.060	56,712	7.50	1,063	N/A	2,130	A, B	
RTU-1	SINGLE ZONE	MAIN SALES FRONT	0.80	-	7,089	0.060	56,712	7.50	1,063	N/A	0	B	
RTU-2	SINGLE ZONE	DELI PREP	0.80	-	1,474	0.120	9	7.50	306	N/A	310	-	
RTU-3	SINGLE ZONE	RECEIVING & STOCK	0.80	-	2,284	0.120	2	10.00	368	N/A	370	-	
IU-7	SINGLE ZONE	SCAN	0.80	-	175	0.080	3	5.00	32	N/A	35	-	
IU-8	SINGLE ZONE	MANAGER	0.80	-	119	0.060	1	5.00	15	N/A	20	-	
ERV													



1 MECHANICAL ROOF PLAN
1/8" = 1'-0"

- GENERAL NOTES:**
- ALL CURBS AND/OR PLATFORMS SHALL BE PROVIDED AS SCHEDULED ON SHEET M100.
 - ALL STUB-UPS FOR MECHANICAL EQUIPMENT SHOWN HEREIN SHALL BE LOCATED BY THE MECHANICAL CONTRACTOR. EACH DISCIPLINE SHALL BE RESPONSIBLE FOR COMPLYING WITH LOCAL CODES AND/OR ORDINANCES. PROVIDE GOOSENECK HOUSING FOR ALL INTAKE/EXHAUST OPENINGS.
 - ALL FRESH AIR INTAKES SHALL BE 10'-0" MIN. AWAY OR 3'-0" BELOW ANY EXHAUST OUTLET.
 - TYPE 1 EXHAUST EQUIPMENT OUTLET SHALL BE 10'-0" MIN. AWAY FROM ANY FRESH AIR INTAKE AND FROM ANY PARAPET (INCLUDING MANSARDS) OR ANY ADJACENT BUILDING OR PROPERTY LINE.

- MECHANICAL PLAN NOTES:**
- FACTORY FURNISHED DUCT SMOKE DETECTORS. REFER TO RTU SCHEDULE AND FIRE ALARM DRAWING, SHEET F200, FOR MORE INFORMATION.
 - MAINTAIN EXHAUST DISCHARGE AND FLUE TERMINATIONS A MINIMUM OF 10'-0" AWAY FROM ANY FRESH AIR INTAKES.
 - REFRIGERANT LINE SET SHOWN AS SINGLE LINE FOR CLARITY. PROVIDE SEPARATE REFRIGERANT LINE SETS FOR EACH INDOOR UNIT. REFER TO FLOOR PLAN AND SCHEDULES FOR CONFIGURATION. REFER TO ARCHITECTURAL SHEETS FOR PIPE PENETRATION AND DOGHOUSE DETAILS.
 - MOUNT NEW RTU ON CURB ADAPTER ON EXISTING CURB. CONTRACTOR TO FIELD VERIFY EXACT LOCATION OF EXISTING CURB.

CLIENT
SPROUTS FARMERS MARKET
5455 E. HIGH ST., SUITE 111
PHOENIX, AZ 85054
P: 480-814-8016 F: 480-814-8017

COPYRIGHT NOTICE
THIS DRAWING WAS PREPARED FOR USE ON A SPECIFIC SITE CONTINGENT UPON THE DATE AND IT IS NOT SUITABLE FOR USE ON ANOTHER PROJECT WITHOUT THE WRITTEN CONSENT OF THE ARCHITECT. THE ARCHITECT'S LIABILITY IS LIMITED TO THE PROFESSIONAL SERVICES PROVIDED AND DOES NOT INCLUDE ANY CONSEQUENTIAL DAMAGES OR LOSS OF PROFITS OR BUSINESS OPPORTUNITIES. THE ARCHITECT'S LIABILITY IS LIMITED TO THE PROFESSIONAL SERVICES PROVIDED AND DOES NOT INCLUDE ANY CONSEQUENTIAL DAMAGES OR LOSS OF PROFITS OR BUSINESS OPPORTUNITIES.

ARCHITECT OF RECORD
LDG
Larson Design Group
3000 WESTINGHOUSE DRIVE
SUITE 400
CRANBERRY TWP, PA 16866
(877) 323-6603

ISSUES AND REVISIONS

NUMBER	DATE	DESCRIPTION

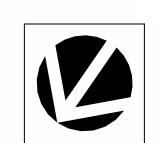
CONSULTANT
HENDERSON ENGINEERS
6345 LENEXA DRIVE, SUITE 300
LENEXA, KS 66214
TEL 913.742.5000 FAX 913.742.5001
WWW.HENDERSONENGINEERS.COM
255003487
FL REGISTRY NO. EB 7606
EXPIRES 2/28/2027

PROFESSIONAL SEAL
JARROD M. EASTERWOOD
LICENSE # 89988
4/24/2026

STORE INFORMATION
SPROUTS FARMERS MARKET
#0680
3111 MAHAN DR. SUITE #18
TALLAHASSEE, FL 32308
SHEET NAME
MECHANICAL ROOF PLAN

DATE: 04/24/2026
DRAWN BY: MLJ
CHECKED BY: SW
BUILD TYPE: EBTS
PROTOTYPE VERSION: V6.2.9_20250305
PROJECT NUMBER: 13624-031
SHEET NUMBER
M300

THIS ITEM HAS BEEN ELECTRONICALLY SIGNED AND SEALED BY JARROD M. EASTERWOOD ON THE DATE LISTED BELOW USING A DIGITAL SIGNATURE.
PRINTED COPIES OF THIS DOCUMENT ARE NOT CONSIDERED SIGNED AND SEALED AND THE SIGNATURE MUST BE VERIFIED ON ANY ELECTRONIC COPIES.



04/24/2026

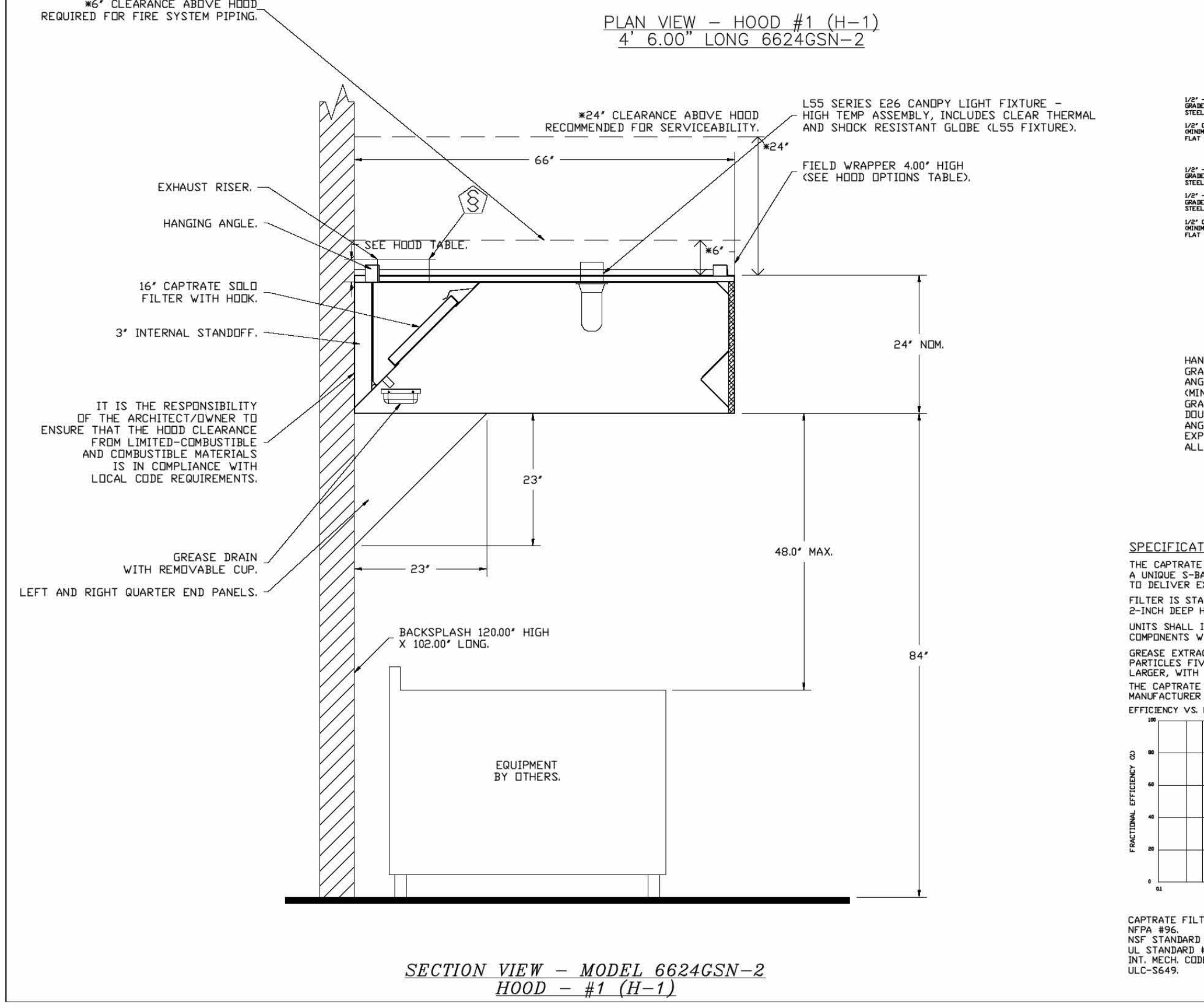
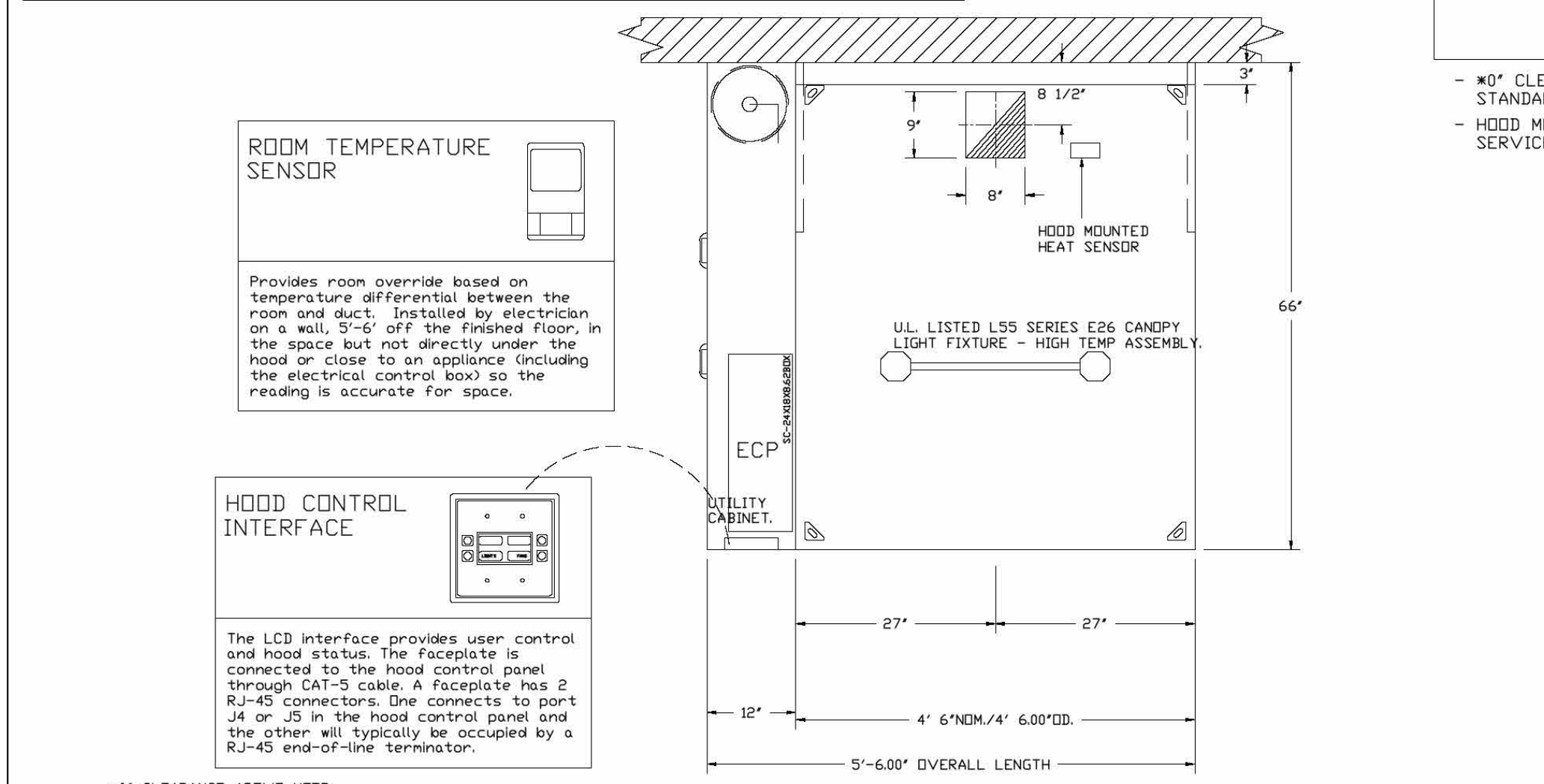
JARROD M. EASTERWOOD

M300 MECHANICAL ROOF PLAN - #0680

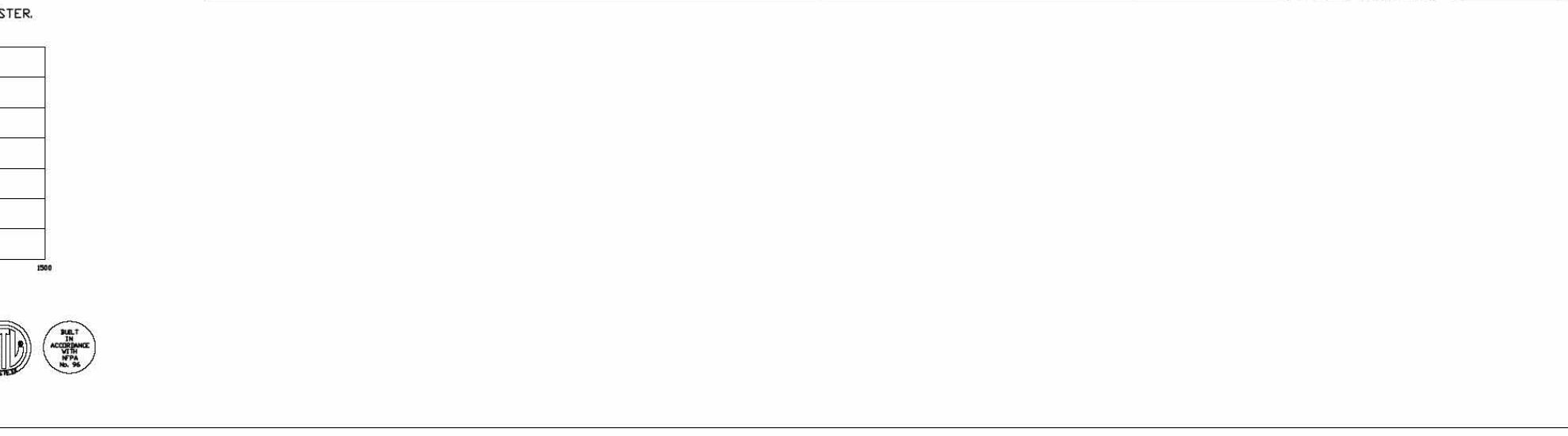
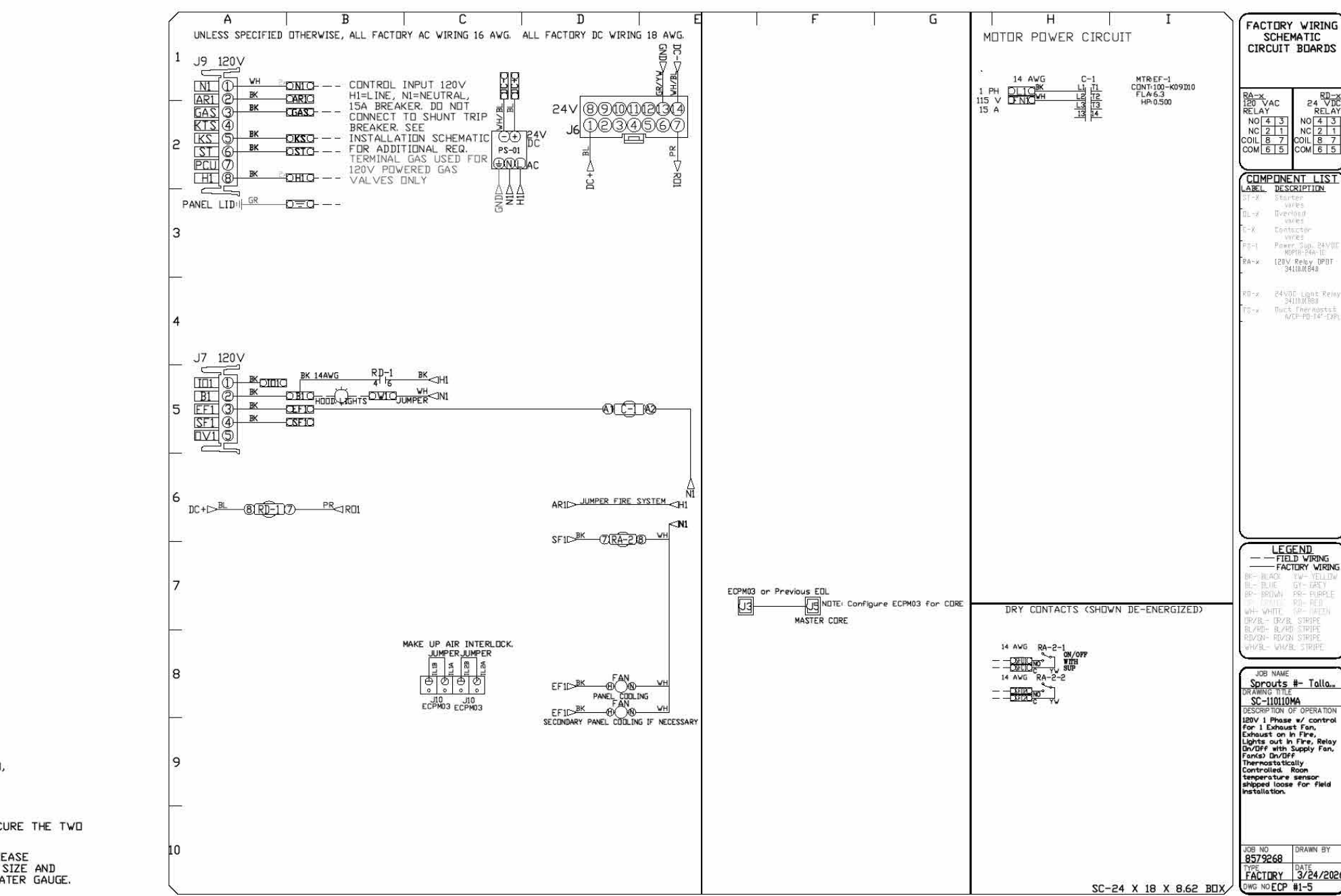
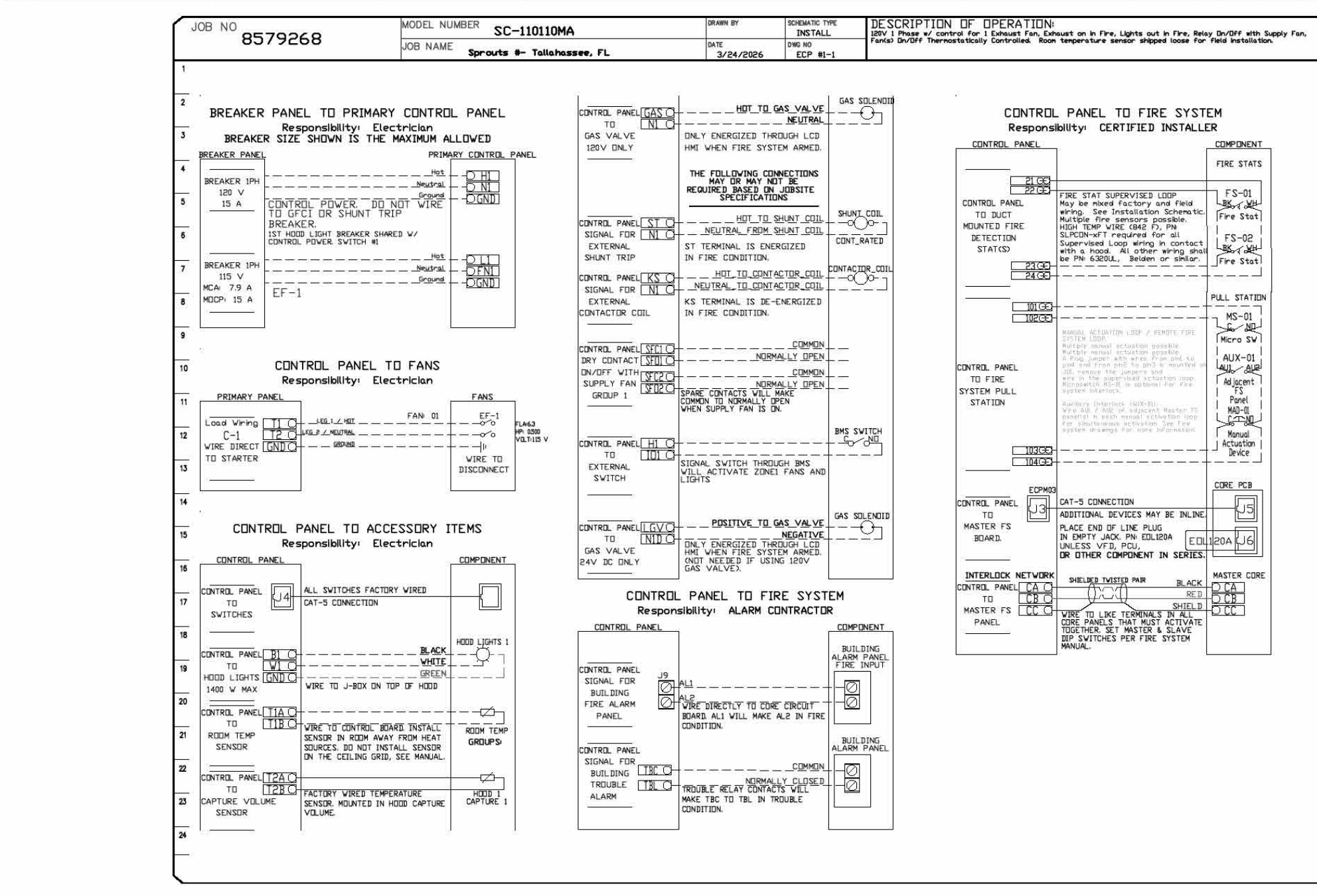
HOOD INFORMATION - JOB#8579268										
HOOD NO.	TAG	MODEL	MANUFACTURER	LENGTH	MAX COOKING TEMP	TYPE	APPLIANCE DUTY	DESIGN CFM/FT	TOTAL EXH CFM	EXHAUST FLEXIBLE RISER
1	H-1	6624	GREASEMASTER	4' 6"	450 DEG	I	MEDIUM	176	790	9' 8" 4' 1" 790 1580 -0.600"

HOOD INFORMATION									
HOOD NO.	TAG	TYPE	QTY	HEIGHT	LENGTH	EFFICIENCY @ 7 FEET	QTY	TYPE	WIRE
1	H-1	CAPTATE SOLID FILTER	3	16"	16"	85% SEE FILTER SPEC	2	L55 SERIES E26	ND

HOOD OPTIONS									
HOOD NO.	TAG	FIELD WRAPPER	4.00" HIGH	FRONT, LEFT, RIGHT					
1	H-1	FIELD WRAPPER	4.00" HIGH	FRONT, LEFT, RIGHT					



ELECTRICAL PACKAGE - JOB#8579268									
NO.	TAG	PACKAGE #	LOCATION	LOCATION	QUANTITY	OPTION	FAN TAG	TYPE	# HP
1	H-1	SC-100109A	UTILITY CABINET LEFT	UTILITY CABINET LEFT	1 LIGHT	SMART CONTROLS THERMOSTATIC CONTROL V/V RELAY ON/OFF WITH SUPPLY	EF-1	EXHAUST	1



REVISIONS

NO.	DESCRIPTION	DATE

GREASE MASTER
 608 MATTHEWS MINT HILL RD. SE. 105 MATTHEWS, NC 28105
 TELEPHONE 704-844-6907 FAX 704-844-8013
 WWW.GREASEMASTER.COM INFO@GREASEMASTER.COM

Sprouts # Tallahassee, FL
 3111 Mahan Drive, Suite #18
 Tallahassee, FL, 32308

DATE: 3/24/2026
 DWG.#: 8579268
 DRAWN BY: obreiat
 SCALE: 3/4" = 1'-0"
 MASTER DRAWING

SHEET NO. 1

NO.	LOCATION	HOOD CALCULATION	NO.	EXHAUST FANS
1	DELI PREP. AREA	SEE GREASE MASTER DETAILS. ALSO, SEE SHEET M100	1	SEE GREASE MASTER DETAILS. ALSO, SEE SHEET M100

GENERAL NOTES:

- THE GENERAL CONTR. SHALL BE RESPONSIBLE FOR ALL ROOF OPENING, CURBS, FLASHING, AND STRUCTURAL SUPPORT. SEE ARCHITECTURAL AND STRUCTURAL PLANS FOR MORE DETAILS.
- THE GENERAL CONTR. SHALL PROVIDE MIN. 1-HOUR FIRE WRAP ON GREASE DUCT TO ROOF, PLUS 1-HOUR RATED CEILING AND WALLS FOR 18" MIN. PAST THE HOOD AND 24" MIN. PAST THE COOKING EQUIPMENT.
- THE GENERAL CONTR. SHALL PROVIDE A GREASE DUCT CLEAN-OUT EVERY 10' AND AT EVERY TURN OR AS NECESSARY CALLED OUT IN LOCAL CODE.
- THE HVAC SUB-CONTR. SHALL PROVIDE A SLIDING OR HINGED DUCT CLEAN-OUT DOOR. THE DOOR MUST OPEN WITHOUT THE NEED OF ANY TOOL.
- ALL SURFACE FINISHES SHALL BE NON-COMBUSTIBLE AND MUST MEET ALL APPLICABLE CODES. SEE ARCHITECTURAL SET FOR MORE SPECIFICATIONS.
- FOR ALL CANOPY TYPE COMMERCIAL COOKING HOODS THE INSIDE EDGE SHALL OVERHAND OR EXTEND A HORIZONTAL DISTANCE OF NOT LESS THAN 6" BEYOND THE EDGE OF THE COOKING SURFACE/EQUIPMENT ON ALL OPEN SIDES, AND THE VERTICAL DISTANCE BETWEEN THE LIP OF THE HOOD AND THE COOKING SURFACE/EQUIPMENT SHALL NOT EXCEED 4 FEET.
- THE GENERAL CONTR. SHALL PROVIDE 1-HOUR FIRE RATED CEILING ABOVE COOKING EQUIPMENT AND TO BE 18" MIN. PAST HOOD AT BOTH SIDES.
- ALL HOODS SHALL BE U.L. LISTED AND SHALL BE CONSTRUCTED AND INSTALLED TO ALL U.L. SPECIFICATIONS.

2 HOOD AND EXHAUST FAN CHART

GREASE MASTER
 505 CUTHBERTSON STREET MONROE, NC 28110
 TELEPHONE 704-289-4663 FAX 704-289-4662
 WWW.GREASEMASTER.COM
 INFO@GREASEMASTER.COM

SPROUTS FARMERS MARKET
 5455 E. HIGH ST., SUITE 111
 PHOENIX, AZ 85054
 P. 480-814-8016 F. 480-814-8017

ARCHITECT OF RECORD
LDG
 Larson Design Group
 3000 WESTINGHOUSE DRIVE
 SUITE 400
 CRANBERRY TWP, PA 16066
 (877) 323-6603

ISSUES AND REVISIONS

NUMBER	DATE	DESCRIPTION

CONSULTANT

PROFESSIONAL SEAL

FOR REFERENCE ONLY

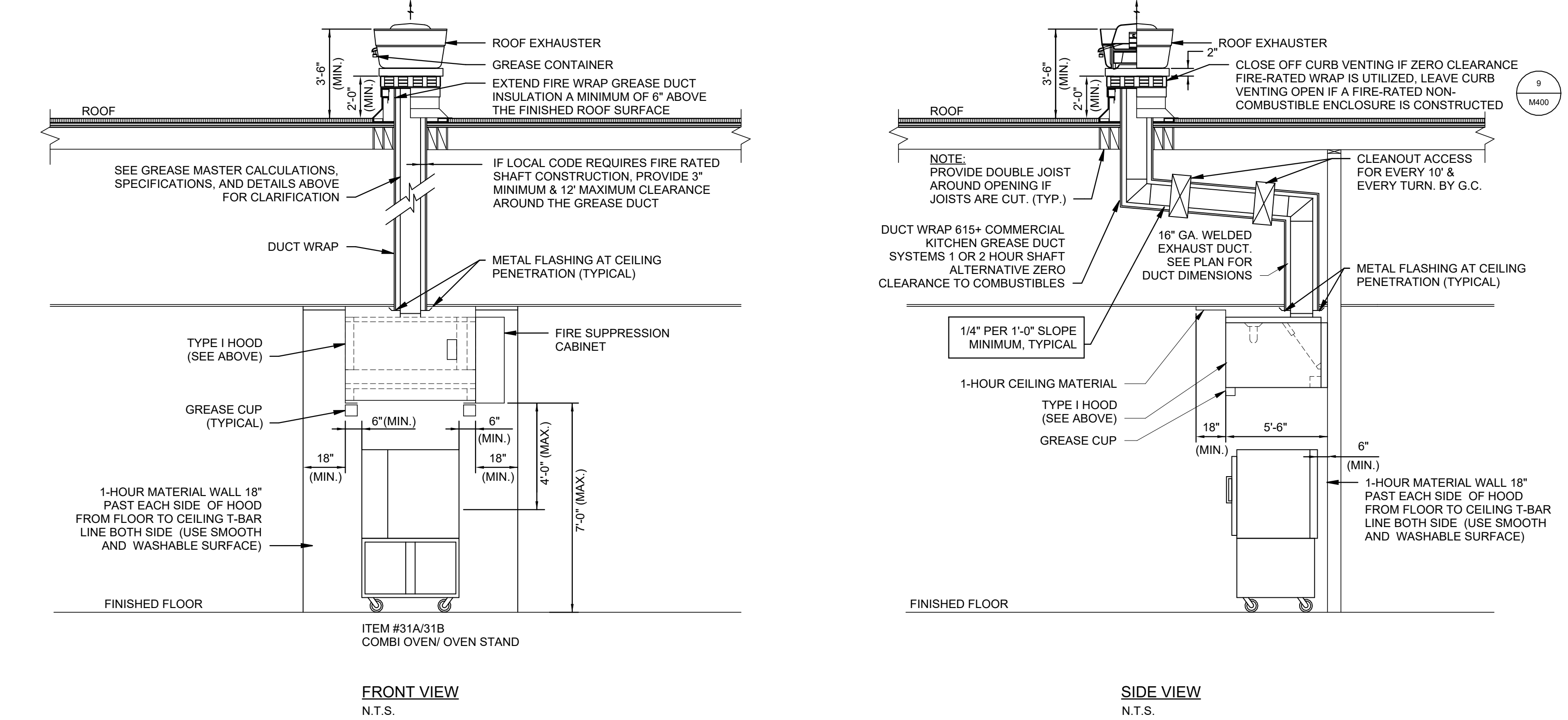
SPROUTS FARMERS MARKET
 #0680
 3111 MAHAN DR. SUITE #18
 TALLAHASSEE, FL 32308

MECHANICAL HOOD SCHEDULES AND DETAILS

DATE: 04/24/26
 DRAWN BY: M.L.
 CHECKED BY: SW
 BUILD TYPE: EBTS
 PROTOTYPE VERSION: V6.2.9_20250305
 PROJECT NUMBER: 13624-031
 SHEET NUMBER

M500

1 GREASE MASTER HOOD DETAILS



3 HOOD #1 TYPE I - SERVICE AREA

NOTE:
 THE DOCUMENTATION CONTAINED ON THIS SHEET WAS NOT PREPARED BY HENDERSON ENGINEERS AND IS INCLUDED IN THIS SET FOR REFERENCE ONLY. HENDERSON ENGINEERS REVIEWED THE DOCUMENTATION ON THIS SHEET FOR GENERAL COMPLIANCE WITH DESIGN INTENT. SUPPLIER IS RESPONSIBLE THAT ALL FURNISHED EQUIPMENT ON THIS SHEET COMPLIES WITH APPLICABLE LOCAL, STATE, AND FEDERAL LAWS, CODES, AND REGULATIONS.

COPYRIGHT NOTICE
 THIS DRAWING WAS PREPARED FOR USE ON A SPECIFIC SITE AND IS NOT TO BE REPRODUCED OR TRANSMITTED IN ANY FORM OR BY ANY MEANS, ELECTRONIC OR MECHANICAL, INCLUDING PHOTOCOPYING, RECORDING, OR BY ANY INFORMATION STORAGE AND RETRIEVAL SYSTEM. ANY REUSE OF THIS DRAWING FOR ANY OTHER PROJECT WITHOUT THE WRITTEN PERMISSION OF THE ARCHITECT IS PROHIBITED. THE ARCHITECT ASSUMES NO LIABILITY FOR ANY DAMAGE OR INJURY TO PERSONS OR PROPERTY ARISING FROM THE USE OF THIS DRAWING FOR ANY OTHER PROJECT.

ARCHITECT OF RECORD



ISSUES AND REVISIONS

NUMBER	DATE	DESCRIPTION

CONSULTANT

PROFESSIONAL SEAL

FOR REFERENCE ONLY

SPROUTS FARMERS MARKET #0680
3111 MAHAN DR. SUITE #18 TALLAHASSEE, FL 32308
MECHANICAL HOOD SCHEDULES AND DETAILS

DATE: 04/24/2026
DRAWN BY: M.L.
CHECKED BY: SW
BUILD TYPE: EBTS
PROTOTYPE VERSION: V6.2.9_20250305
PROJECT NUMBER: 13624-031
SHEET NUMBER: M501

FIRE SYSTEM INFORMATION - JOB#8579268

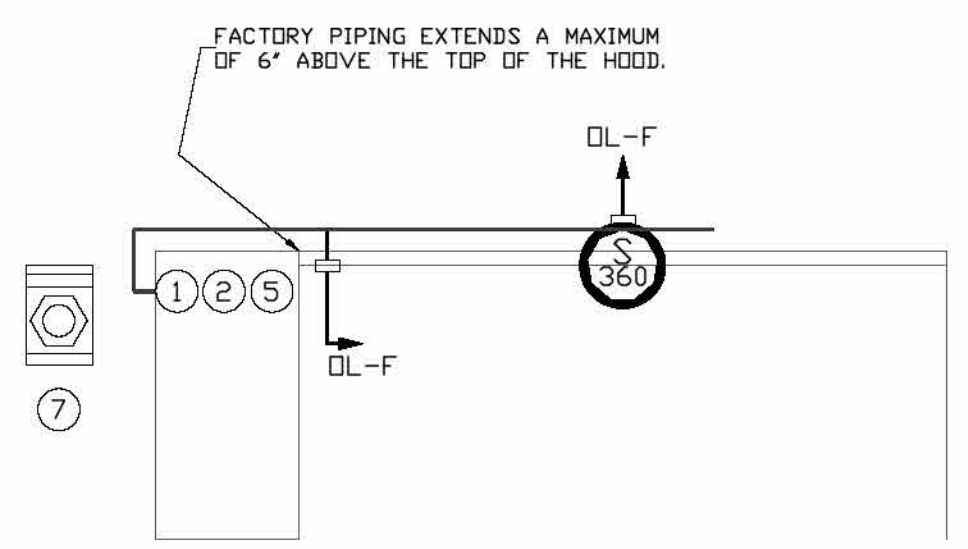
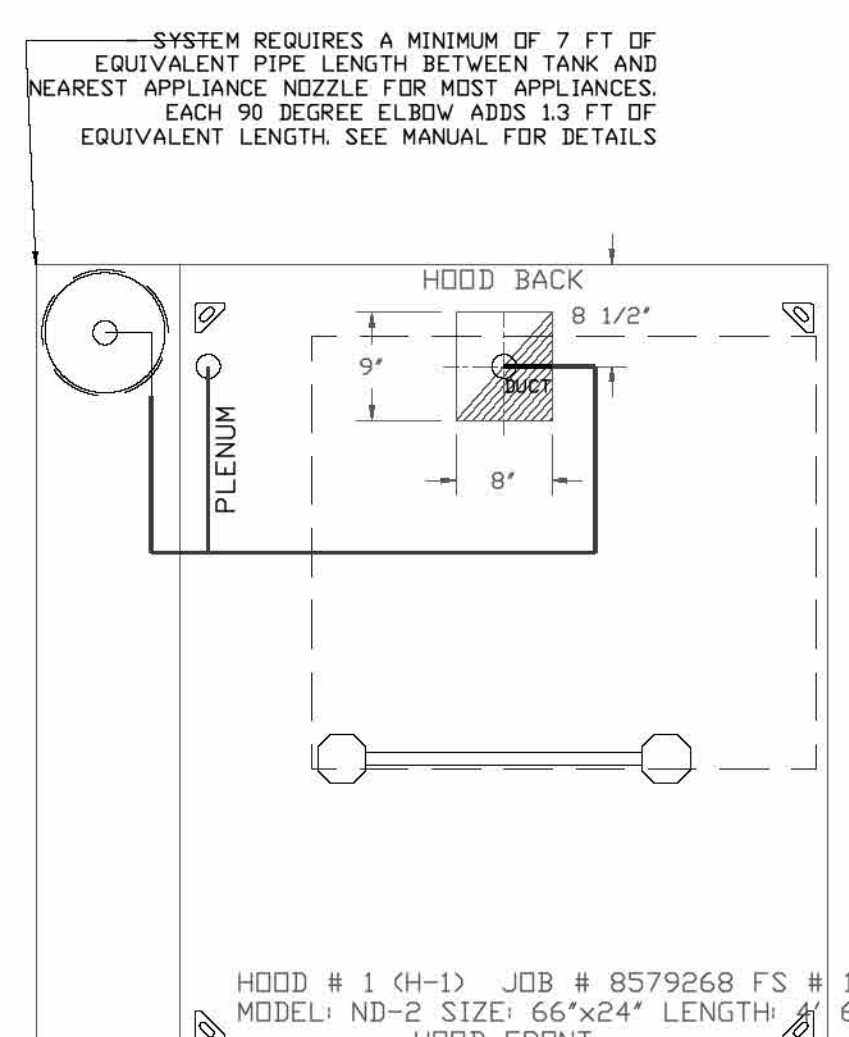
FIRE SYSTEM NO.	TAG	TYPE	SIZE	MAX FP	DESIGN FP	INSTALLATION SYSTEM	LOCATION ON HOOD
1	H-1	TANK FS	4.0	20	8	FIRE CABINET LEFT	LEFT, HOOD 1

GAS VALVE(S)

FIRE SYSTEM NO.	TAG	TYPE	SIZE	SUPPLIED BY
1	H-1	SC ELECTRICAL	2.000	GREASEMASTER

FIRE SYSTEM PARTS LIST KEY

FIRE SYSTEM NO.	TAG	KEY NUMBER - PART DESCRIPTION	QTY BY FACTORY	QTY BY DIST
		0 - 0 - TANK FIRE SUPPRESSION POST-DISCHARGE PROCEDURE UTILITY CABINET LABEL SHEET.	1	0
		0 - 0 - TANK FIRE SUPPRESSION MAINTENANCE GUIDE UTILITY CABINET LABEL SHEET.	1	0
		0 - 0 - 12-F28021-32144-01-360 DUCT FIRE THERMOSTAT WITH 12 FOOT WIRE LEADS. NO. CLOSE ON TEMP RISE AT 360°F. (A0034310).	1	0
		0 - 0 - 4429K153 1/2" MALE NPT TO 1/2" FEMALE NPT ELBOW, BRASS.	1	0
		0 - 0 - 4429K422 1/2" X 1/4" BRASS REDUCING BUSHING.	1	0
		0 - 0 - 79525 1/2" 90 DEG-PRESS ELBOW WITH 1/2" NPT FEMALE CONNECTION, VIEGA.	1	0
		0 - 0 - 79580 1/2" X 1/2" PRO-PRESS TEE X 1/2" NPT FEMALE CONNECTION, VIEGA.	1	0
		0 - 0 - 87-30000-001 TANK - PRESSURIZED TANK USED FOR TANK FIRE SUPPRESSION.	1	0
		0 - 0 - 87-300030-001 PRIMARY ACTUATOR KIT (PAK) - ACTUATOR AND RELEASE SOLENOID ASSEMBLY, ONE NEEDED PER FIRE SYSTEM, SUPERVISED, TANK FIRE SUPPRESSION.	1	0
		0 - 0 - 87-300033-001 DIN CONNECTOR, CANFIELD PART #5J560-201-EU0A, TANK FIRE SUPPRESSION, SUBMINUTE SOLENOID CONNECTION (CEN) VENDOR: 30377).	1	0
		0 - 0 - 87-300152-001 HARDWARE, SVA BOLTS, TANK FIRE SUPPRESSION.	4	0
		0 - 0 - 98694115 HARDWARE, DATANKLOCK LOCKING BRACKET SQUARE NUTS 5/16" ZINC, TANK FIRE SUPPRESSION.	2	0
		0 - 0 - A0034322 JUNCTION BOX FOR MANUAL PULL, STATION, 1.5" DEEP BACK BOX, RED COLOR.	1	0
		0 - 0 - A31484 1/4" NPT SCHRADER VALVE AND CAP, JB INDUSTRIES, 1/4" FLARE X 1/4" MPT HALF UNION, USED IN TANK SERVICE PORT.	1	0
		0 - 0 - DATANKLOCK DISCHARGE ADAPTER TANK LOCKING PLATE FOR FIRE SYSTEM TANK INSTALLATION IN UTILITY CABINETS, TANK FIRE SUPPRESSION.	1	0
		0 - 0 - TANK STRAP TANK STRAP - USED FOR TANK FIRE SUPPRESSION.	3	0
		0 - 0 - TFS-LUCTANKBRACKET TANK BRACKET FOR FIRE SYSTEM TANK INSTALLATION IN UTILITY CABINETS, TANK FIRE SUPPRESSION.	1	0
		0 - 0 - WK-283952-000 DISCHARGE ADAPTER, TANK FIRE SUPPRESSION.	1	0
		34 - 34 - A0034331 RED COLOR - 24VDC SINGLE ACTION MANUAL ACTUATION DEVICE (PUSH/PULL STATION) WITH PROTECTIVE COVER, ONE (1) NORMALLY OPEN CONTACT.	1	0



NOTES

- FIELD PIPE DROPS AS SHOWN
- PIPING, ELBOWS, TEES, AND NOZZLES SUPPLIED BY CAS.
- FIELD INSTALLED DROP: FACTORY WILL PROVIDE QTY 2 60IN LONG PIECES OF CHROME PLATED PIPING SHIPPED LOOSE TO BE FIELD-INSTALLED.
- SHIP LOOSE DROP: FACTORY WILL PROVIDE THE EXACT CHROME PIPE LENGTH NEEDED SHIPPED LOOSE TO BE FIELD-INSTALLED.
- RELOCATE NOZZLES IF FLOW PATTERN IS BLOCKED BY SHELVING, SALAMANDERS, ETC.
- OVERLAPPING COVERAGE SHALL NOT BE USED ON ANY APPLIANCE WITH AN OBSTRUCTION.
- IF APPLICABLE, EXTENDED PRE-PIPED DROPS ARE SHIPPED LOOSE.
- FACTORY PIPING EXTENDS A MAXIMUM OF 6' ABOVE THE TOP OF THE HOOD.
- APPLIANCE DIMENSIONS LISTED REPRESENT THE COOKING SURFACE SIZE, NOT THE OVERALL APPLIANCE SIZE.
- THIS PRE-ENGINEERED FIRE SYSTEM COMPLIES WITH UL 300 REQUIREMENTS.
- DL-F NOZZLE PART NUMBER REPLACES 3070-3/8H-10-SS

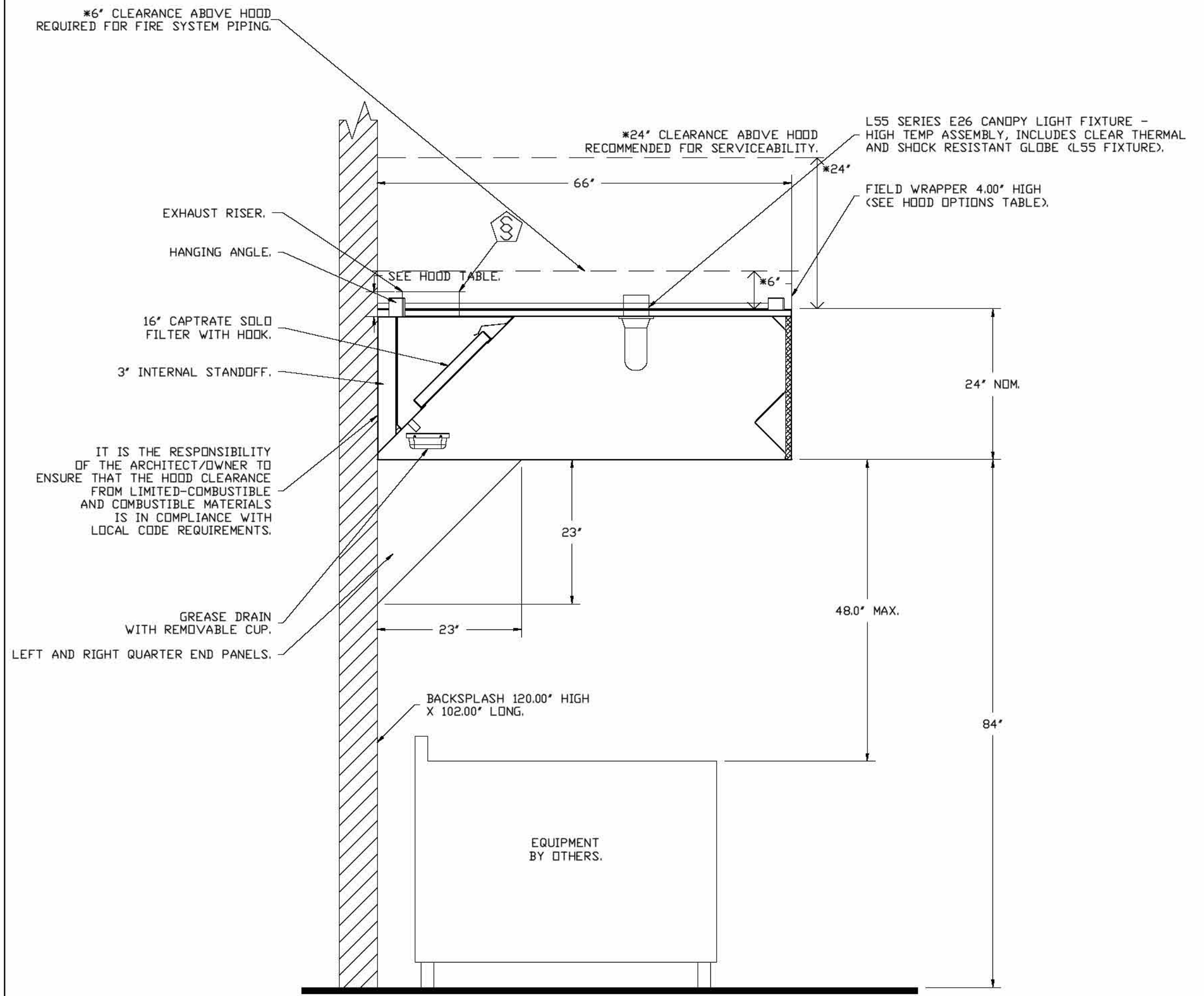
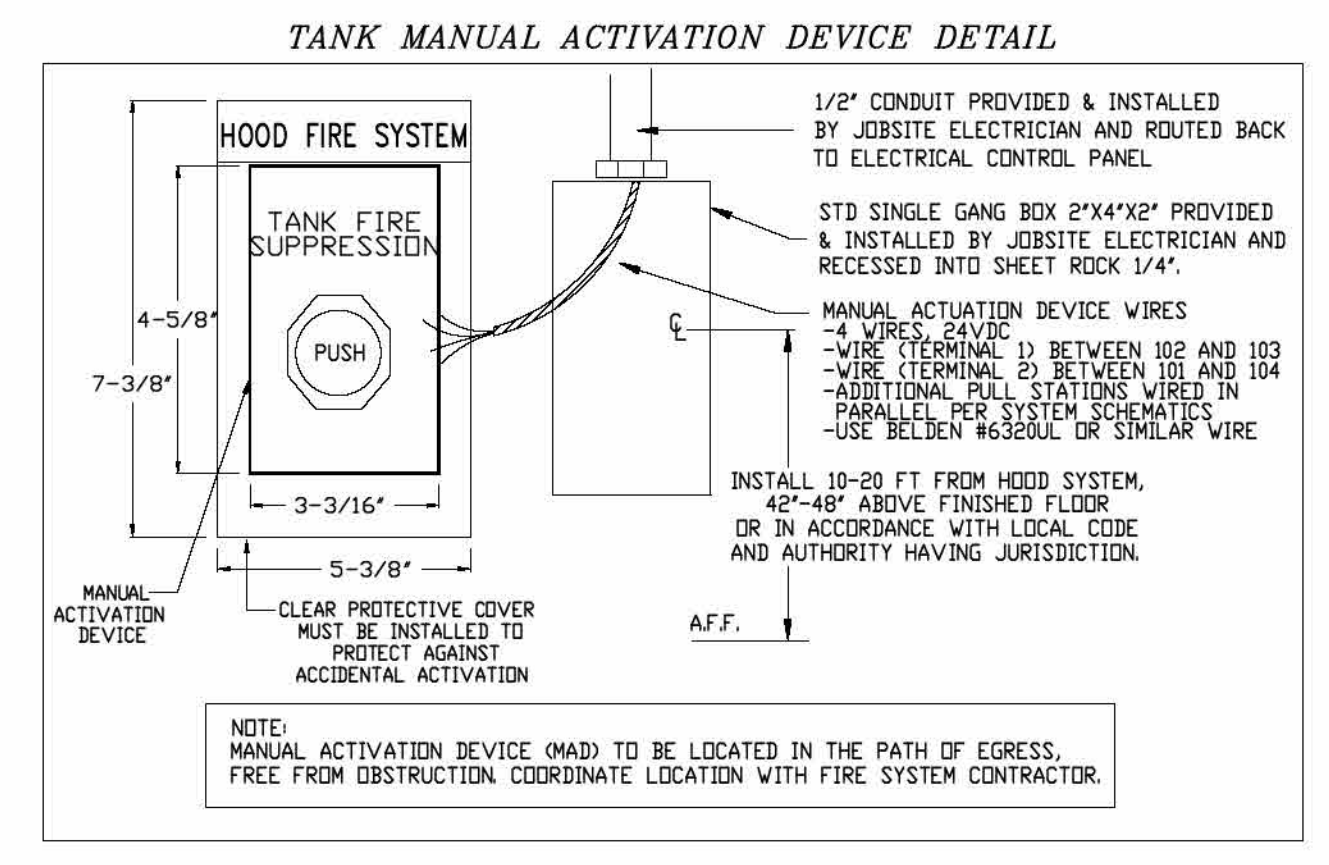
JOB # 8579268.
 JOB NAME: SPROUTS #- TALLAHASSEE, FL.
 SYSTEM SIZE: TANK-SP-1 DESIGN FP: 8. MAXIMUM FP: 20.
 HOOD # 1 4' 6.00' LONG x 66" WIDE x 24" HIGH.
 RISER # 1 SIZE: 9" x 8".
 HOOD # 1 METAL BLOW-OFF CAPS INCLUDED.

- HEAVY-DUTY APPLIANCES (RATED 600°F) WILL REQUIRE AN ADDITIONAL DOWNSTREAM FIRESTAT IN THE EVENT THAT THE DUCTWORK CONTAINS ANY HORIZONTAL RUNS OVER 25 FT IN LENGTH.
 - MEDIUM TO LIGHT-DUTY APPLIANCES (RATED 450°F) WILL NOT REQUIRE ANY ADDITIONAL DOWNSTREAM DETECTION.

AGENT DISTRIBUTION PIPING LIMITATIONS

PIPE SECTION	MAX PIPE LENGTH (FT)
MAX SUPPLY LINE TO FIRST OVERLAPPING NOZZLE	42
OVERLAPPING NOZZLE APPLIANCE BRANCH	10
DEDICATED NOZZLE APPLIANCE BRANCH	10

- LEGEND - FIRE CABINET TANK SYSTEM**
- 4 GALLON TANK.
 - PRIMARY ACTUATOR RELEASE.
 - SECONDARY ACTUATOR RELEASE.
 - PRESSURE SUPERVISION SWITCH.
 - PRIMARY HOSE ASSEMBLY.
 - SECONDARY HOSE ASSEMBLY.
 - REMOTE MANUAL ACTUATION DEVICE.



SECTION VIEW - MODEL 6624GSN-2
 HOOD - #1


GREASE MASTER WILL PIPE THE HOOD FOR THE TANK FIRE SYSTEM AND INCLUDE THE TANK INSTALLED IN THE HOOD UTILITY CABINET. THE GC IS RESPONSIBLE FOR HIRING THE TANK CERTIFIED INSTALLER FOR HOOK-UP OF THE TANK SYSTEM AS WELL AS OBTAINING FIRE SYSTEM PERMIT AND AND TESTING WITH THE FIRE MARSHAL.

NOTE:
 THE DOCUMENTATION CONTAINED ON THIS SHEET WAS NOT PREPARED BY HENDERSON ENGINEERS AND IS INCLUDED IN THIS SET FOR REFERENCE ONLY. HENDERSON ENGINEERS REVIEWED THE DOCUMENTATION ON THIS SHEET FOR GENERAL COMPLIANCE WITH DESIGN INTENT. SUPPLIER IS RESPONSIBLE THAT ALL FURNISHED EQUIPMENT ON THIS SHEET COMPLIES WITH APPLICABLE LOCAL, STATE, AND FEDERAL LAWS, CODES, AND REGULATIONS.

1 GREASE MASTER HOOD DETAILS

COPYRIGHT NOTICE
 THIS DRAWING WAS PREPARED FOR USE ON A SPECIFIC SITE CONTINGENT UPON THE DATE AND IT IS NOT SUITABLE FOR USE ON ANOTHER PROJECT SITE OR AT A LATER TIME. THE USE OF THIS DRAWING FOR REFERENCE OR EXAMPLE ON ANOTHER PROJECT REQUIRES THE SERVICES OF A PROPERLY LICENSED ARCHITECT AND ENGINEER. REPRODUCTION OF THIS DRAWING FOR USE ON ANOTHER PROJECT IS NOT AUTHORIZED AND MAY BE CONTRARY TO THE LAW.

ARCHITECT OF RECORD



Larson Design Group
 3000 WESTINGHOUSE DRIVE
 SUITE 400
 CRANBERRY TWP, PA 16866
 (877) 323-6603

ISSUES AND REVISIONS

NUMBER	DATE	DESCRIPTION

CORRELANT

PROFESSIONAL SEAL

FOR REFERENCE ONLY

SPROUTS FARMERS MARKET
 #0680
 3111 MAHAN DR. SUITE #18
 TALLAHASSEE, FL 32308

MECHANICAL HOOD SCHEDULES AND DETAILS

DATE: 04/24/2026
 DRAWN BY: M.L.
 CHECKED BY: SW
 BUILD TYPE: EBTS
 PROTOTYPE VERSION: V6.2.9_20250305
 PROJECT NUMBER: 13624-031
 SHEET NUMBER: M503

EXHAUST FAN INFORMATION - JOB#8579268

FAN UNIT NO.	TAG	QTY	FAN UNIT MODEL #	MANUFACTURER	CFM	ESP	RPM	MOTOR ENCL.	HP	BHP	PHASE	VOLT	FLA	DISCHARGE VELOCITY	WEIGHT (LBS)	SDNES
1	EF-1	1	GMDU50H	GREASEMASTER	790	1.150	1460	TEAD-ECM	0.500	0.3690	1	115	6.3	300 FPM	79	14.6
2	EF-2	1	GMDR12H	GREASEMASTER	500	0.500	1520	TEAD-ECM	0.250	0.1950	1	115	2.9		53	8.9
3	EF-3	1	GMDU33H	GREASEMASTER	460	0.800	1447	TEAD-ECM	0.333	0.1710	1	115	4.3	228 FPM	68	14.5
4	TAF-1	1	GMSIF11DD	GREASEMASTER	550	0.500	1273	TEAD-ECM	0.500	0.1840	1	115	6.3		127	6.7

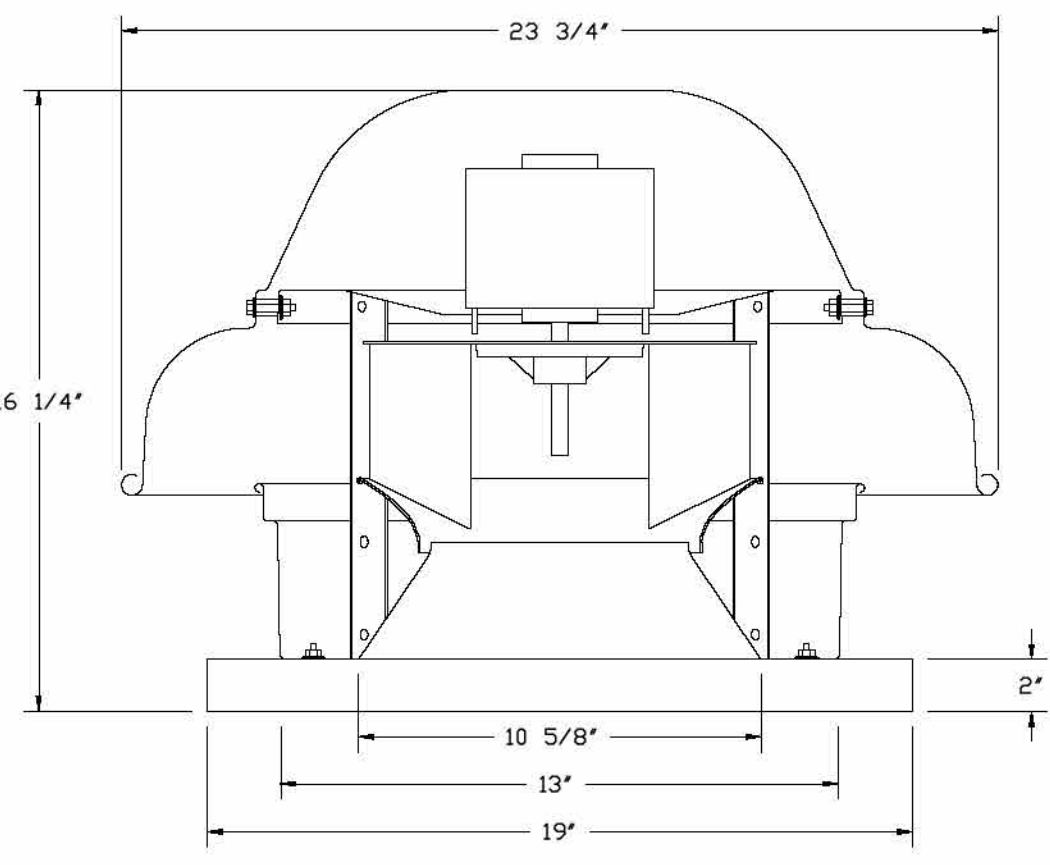
CURB ASSEMBLIES

NO	ON FAN	TAG	WEIGHT	ITEM	SIZE
1	# 1	EF-1	53 LBS	CURB	19.500"W X 19.500"L X 24.000"H VENTED HINGED 16 GAUGE.
2	# 2	EF-2	16 LBS	CURB	17.500"W X 17.500"L X 14.000"H.
3	# 3	EF-3	20 LBS	CURB	19.500"W X 19.500"L X 18.000"H.

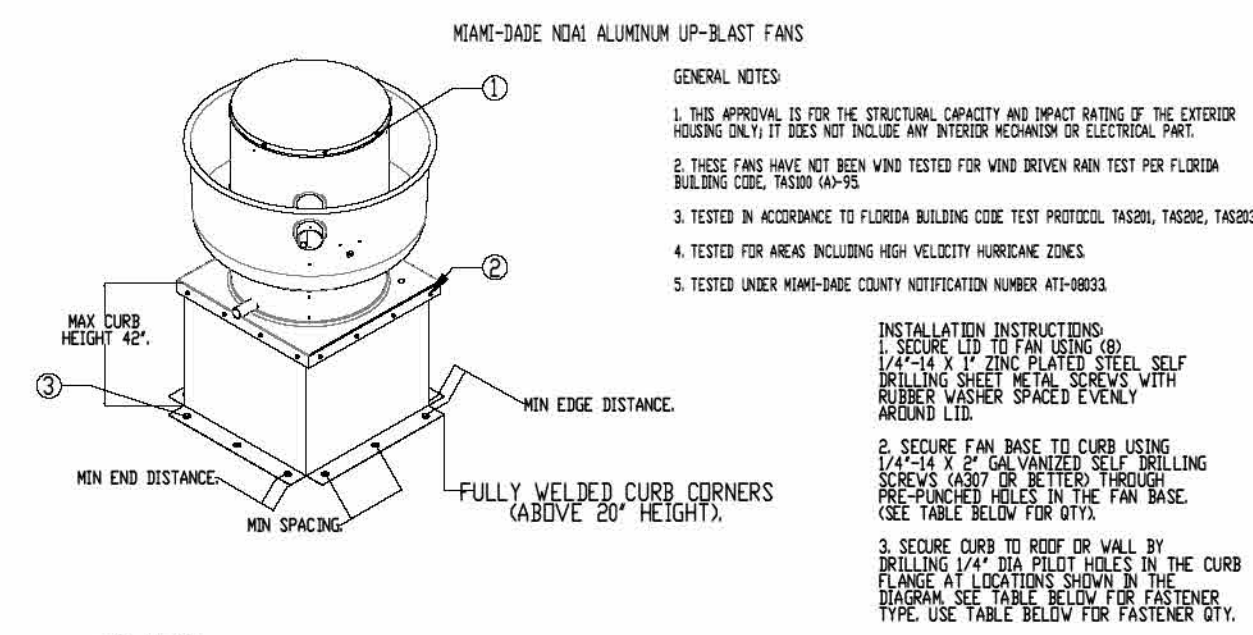
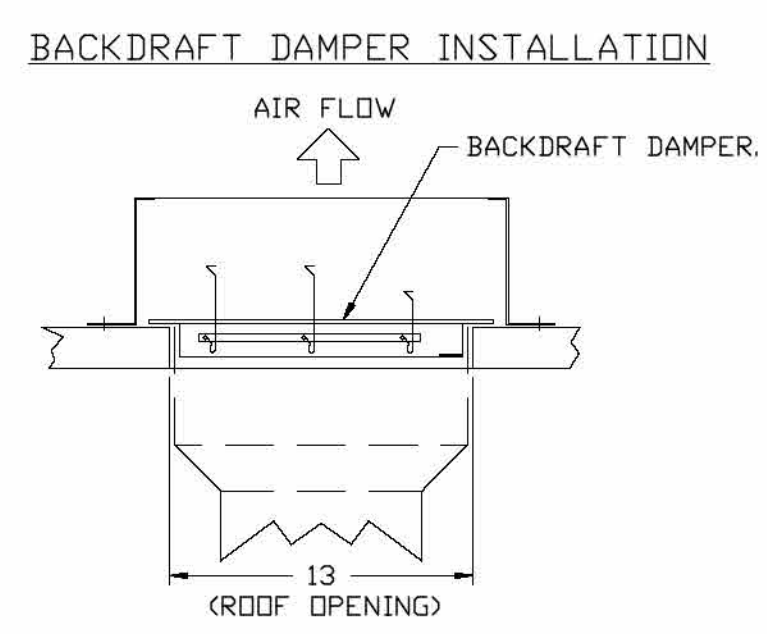
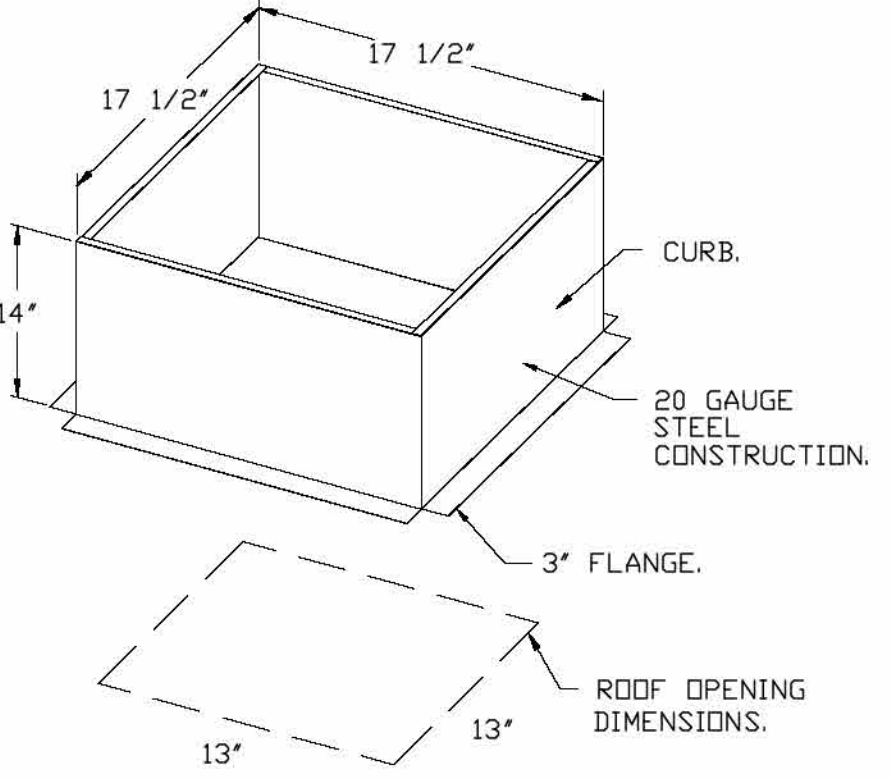
FAN OPTIONS

FAN UNIT NO.	TAG	QTY	DESCRIPTION
1	EF-1	1	GREASE BDX
		1	FAN BASE CERAMIC SEAL - DU/DR50HFA - INSTALLED AT PLANT - FOR GREASE DUCTS
2	EF-2	1	MIAMI DADE CERTIFICATION - NDA-1 ALUMINUM UPBLAST
		1	ECM WIRING PACKAGE - MANUAL DR 0-10VDC REFERENCE SPEED CONTROL -RTC- (TELCO MOTOR), CCW ROTATION
3	EF-3	1	2 YEAR PARTS WARRANTY
		1	ECM WIRING PACKAGE - MANUAL DR 0-10VDC REFERENCE SPEED CONTROL -RTC- (TELCO MOTOR), CCW ROTATION
4	TAF-1	1	12-BDD DAMPER
		1	MIAMI DADE CERTIFICATION - NDA-1 ALUMINUM DOWNBLAST 10
3	EF-3	1	2 YEAR PARTS WARRANTY
		1	ECM WIRING PACKAGE - MANUAL DR 0-10VDC REFERENCE SPEED CONTROL -RTC- (TELCO MOTOR), CCW ROTATION
4	TAF-1	1	SCR-11 BIRD SCREEN
		1	15-BDD DAMPER
1	EF-1	1	MIAMI DADE CERTIFICATION - NDA-1 ALUMINUM UPBLAST
		1	2 YEAR PARTS WARRANTY
1	EF-1	1	SIF11 - STRAIGHT DISCHARGE, SQUARE DUCT CONNECTION
		1	SIF11 - INLET - SQUARE DUCT CONNECTION
1	EF-1	1	SIF - HORIZONTAL OVERHEAD MOUNT - PRE-INSTALLED MOUNTS (11-36)
		1	HANGING SPRING VIBRATION ISOLATORS (SET OF 4), FOR INDOOR OR OUTDOOR USE WITH SQUARE IN-LINE FANS (HSA125)
1	EF-1	1	15-BDD DAMPER
		1	ECM WIRING PACKAGE - EXHAUST - MANUAL DR 0-10VDC REFERENCE SPEED CONTROL -MSC- (TELCO), CCW ROTATION
1	EF-1	1	2 YEAR PARTS WARRANTY

FAN #2 GMDR12H - EXHAUST FAN (EF-2)



- FEATURES:**
- DIRECT DRIVE CONSTRUCTION AND BELTS/PULLEYS.
 - ROOF MOUNTED FANS.
 - UL705.
 - SAFETY DISCONNECT.
 - STANDARD BIRD SCREEN.
 - SPEED CONTROL.
 - THERMAL OVERLOAD PROTECTION (SINGLE PHASE).
- OPTIONS**
- ECM WIRING PACKAGE - MANUAL DR 0-10VDC REFERENCE SPEED CONTROL -RTC- (TELCO MOTOR), CCW ROTATION.
 - 12-BDD DAMPER.
 - MIAMI DADE CERTIFICATION - NDA-1 ALUMINUM DOWNBLAST 10.
 - 2 YEAR PARTS WARRANTY.



CURB MATERIAL: 30" HIGH & LESS = 20 GA. STEEL. ABOVE 30" THRU 42" = 16 GA. STEEL.

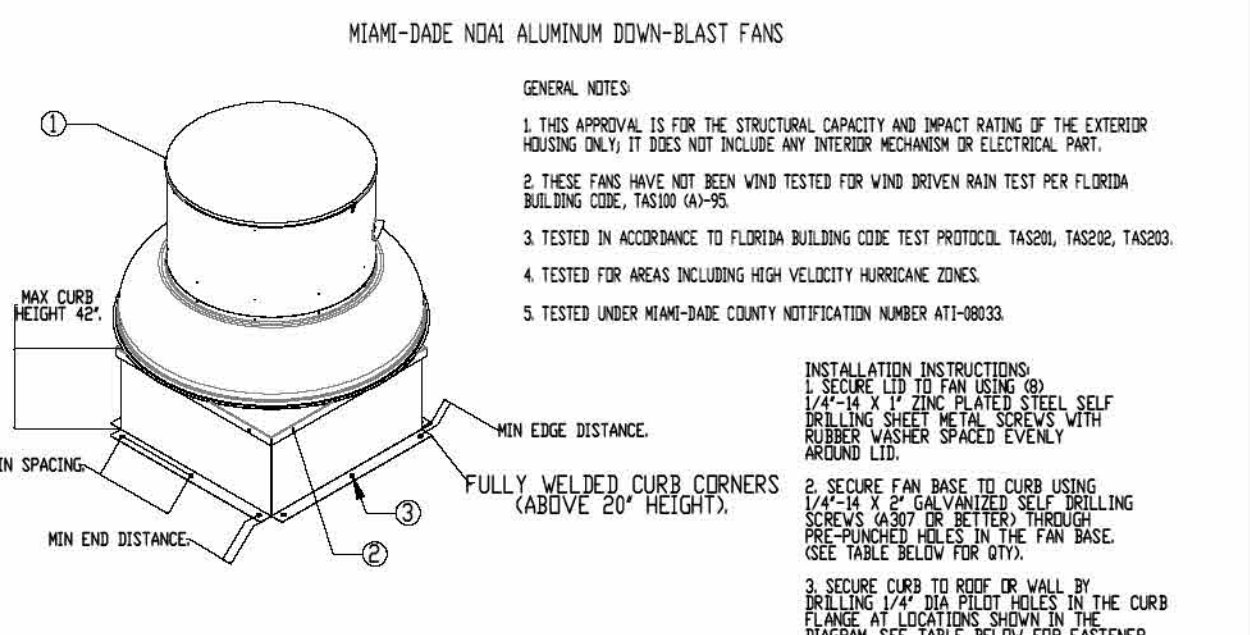
MINIMUM THREAD: N/A

MINIMUM END DISTANCE: N/A

MINIMUM SPACING: N/A

INSTALLATION FASTENER TYPES

FASTENER	WOOD (SG - 0.42 MIN)	STEEL (2 GAUGE MIN)	CONCRETE (5000 PSI MIN. CURED/30 CONCRETE)
MINIMUM THREAD	3/8" DIA. ZINC PLATED LAG BOLT	1/2" DIA. ZINC PLATED LAG BOLT	3/4" DIA. ZINC PLATED LAG BOLT
MINIMUM END DISTANCE	1-1/2"	1-1/2"	1-1/2"
MINIMUM SPACING	1-1/2"	1-1/2"	1-1/2"



CURB MATERIAL: 30" HIGH & LESS = 20 GA. STEEL. ABOVE 30" THRU 42" = 16 GA. STEEL.

MINIMUM THREAD: N/A

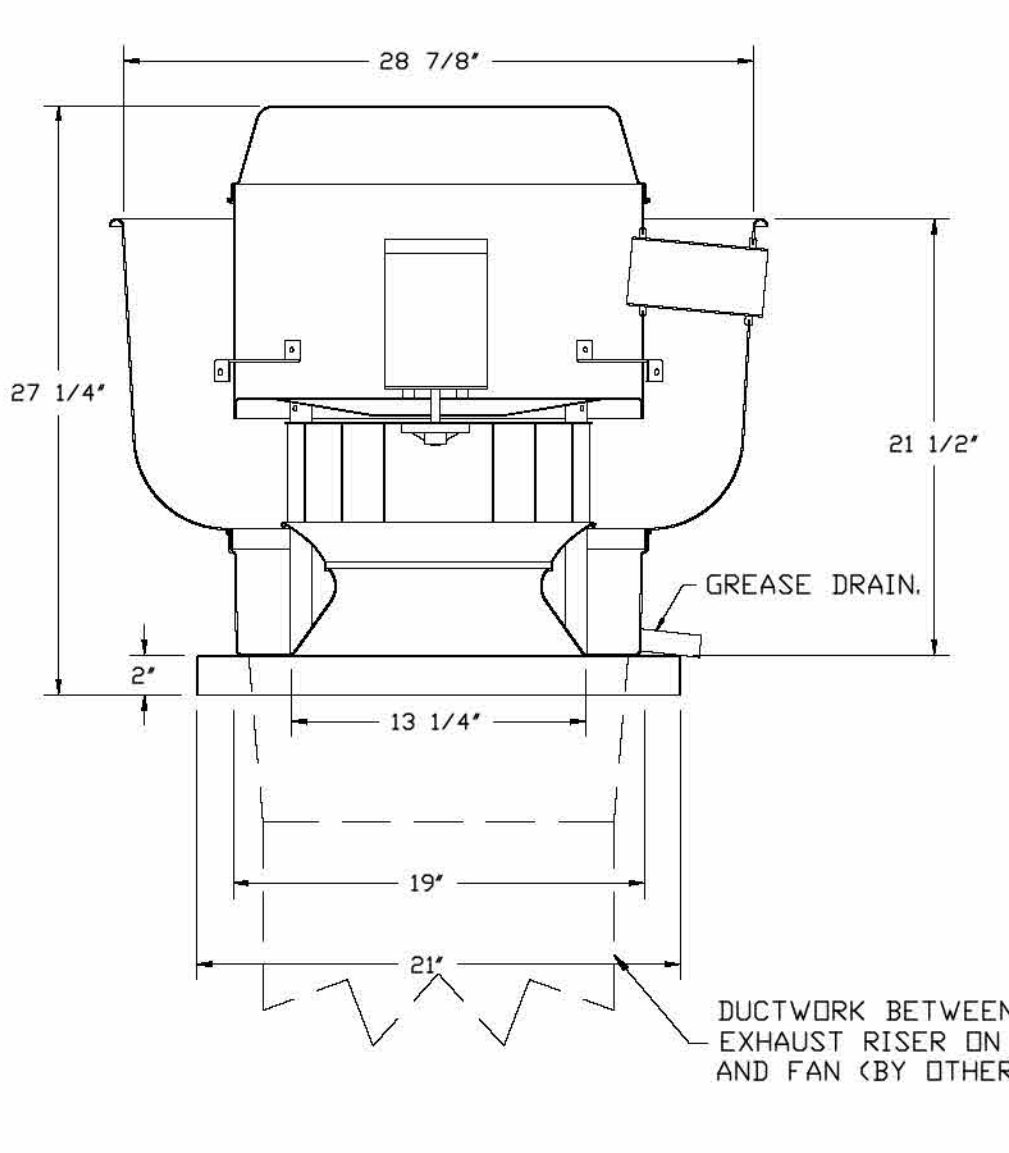
MINIMUM END DISTANCE: N/A

MINIMUM SPACING: N/A

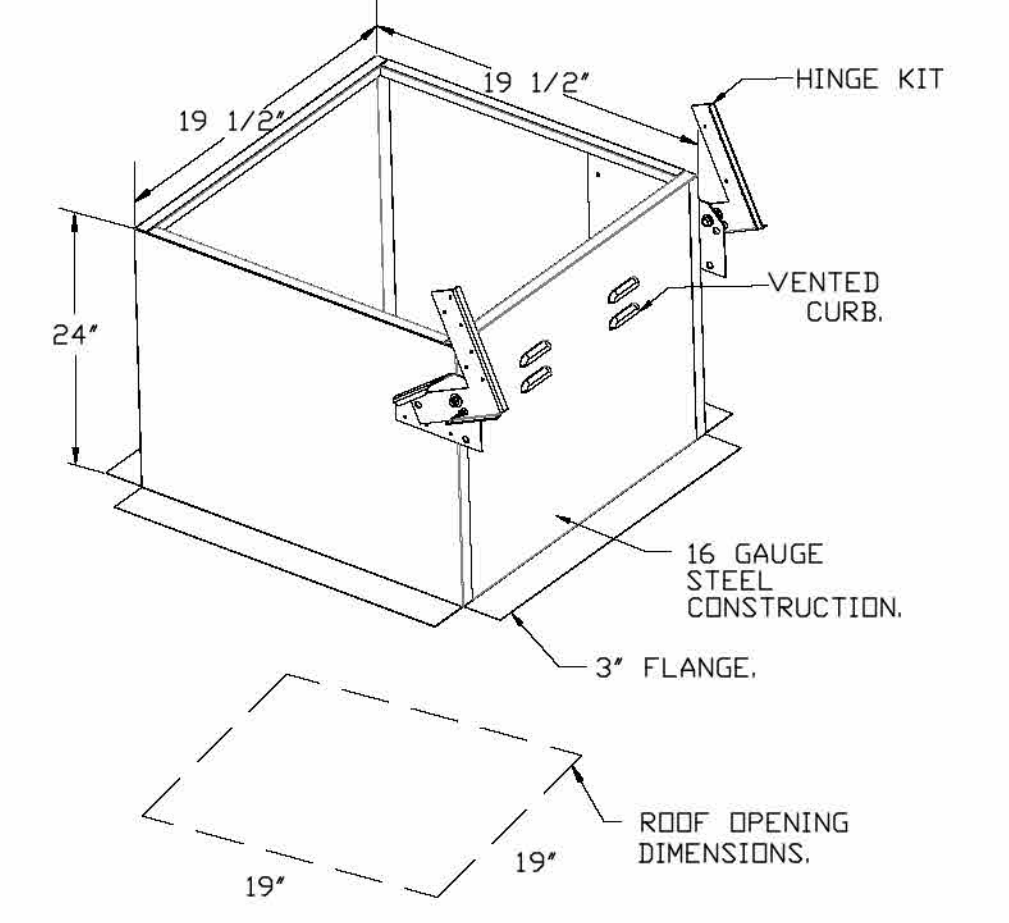
INSTALLATION FASTENER TYPES

FASTENER	WOOD (SG - 0.42 MIN)	STEEL (2 GAUGE MIN)	CONCRETE (5000 PSI MIN. CURED/30 CONCRETE)
MINIMUM THREAD	3/8" DIA. ZINC PLATED LAG BOLT	1/2" DIA. ZINC PLATED LAG BOLT	3/4" DIA. ZINC PLATED LAG BOLT
MINIMUM END DISTANCE	1-1/2"	1-1/2"	1-1/2"
MINIMUM SPACING	1-1/2"	1-1/2"	1-1/2"

FAN #1 GMDU50H - EXHAUST FAN (EF-1)



- FEATURES:**
- DIRECT DRIVE CONSTRUCTION AND BELTS/PULLEYS.
 - ROOF MOUNTED FANS.
 - RESTAURANT MODEL.
 - UL705 AND UL762 AND UL-6645
 - VARIABLE SPEED CONTROL.
 - INTERNAL WIRING.
 - THERMAL OVERLOAD PROTECTION (SINGLE PHASE).
 - HIGH HEAT OPERATION 300°F (149°C).
 - GREASE CLASSIFICATION TESTING.
 - NEMA 3R SAFETY DISCONNECT SWITCH.
- NORMAL TEMPERATURE TEST**
 EXHAUST FAN MUST OPERATE CONTINUOUSLY WHILE EXHAUSTING AIR AT 300°F (149°C) UNTIL ALL FAN PARTS HAVE REACHED THERMAL EQUILIBRIUM, AND WITHOUT ANY DETERIORATING EFFECTS TO THE FAN WHICH WOULD CAUSE UNSAFE OPERATION.
- ABNORMAL FLARE-UP TEST**
 EXHAUST FAN MUST OPERATE CONTINUOUSLY WHILE EXHAUSTING BURNING GREASE VAPORS AT 600°F (316°C) FOR A PERIOD OF 15 MINUTES WITHOUT THE FAN BECOMING DAMAGED TO ANY EXTENT THAT COULD CAUSE AN UNSAFE CONDITION.
- OPTIONS**
- GREASE BDX.
 - FAN BASE CERAMIC SEAL - DU/DR50HFA - INSTALLED AT PLANT - FOR GREASE DUCTS.
 - MIAMI DADE CERTIFICATION - NDA-1 ALUMINUM UPBLAST.
 - ECM WIRING PACKAGE - MANUAL DR 0-10VDC REFERENCE SPEED CONTROL -RTC- (TELCO MOTOR), CCW ROTATION.
 - 2 YEAR PARTS WARRANTY.



1 GREASE MASTER HOOD DETAILS

NOTE:
 THE DOCUMENTATION CONTAINED ON THIS SHEET WAS NOT PREPARED BY HENDERSON ENGINEERS AND IS INCLUDED IN THIS SET FOR REFERENCE ONLY. HENDERSON ENGINEERS REVIEWED THE DOCUMENTATION ON THIS SHEET FOR GENERAL COMPLIANCE WITH DESIGN INTENT. SUPPLIER IS RESPONSIBLE THAT ALL FURNISHED EQUIPMENT ON THIS SHEET COMPLIES WITH APPLICABLE LOCAL, STATE, AND FEDERAL LAWS, CODES, AND REGULATIONS.

COPYRIGHT NOTICE
 THIS DRAWING WAS PREPARED FOR USE ON A SPECIFIC SITE CONTINGENT UPON THE DATE AND IT IS NOT SUITABLE FOR USE ON A DIFFERENT PROJECT SITE OR AT A LATER TIME. USE OF THIS DRAWING FOR REFERENCE OR EXAMPLE ON ANOTHER PROJECT REQUIRES THE SERVICES OF PROPERLY LICENSED ARCHITECTS AND ENGINEERS. REPRODUCTION OF THIS DRAWING FOR USE ON ANOTHER PROJECT IS NOT AUTHORIZED AND MAY BE CONTRARY TO THE LAW.

ARCHITECT OF RECORD



Larson Design Group
 3000 WESTINGHOUSE DRIVE
 SUITE 400
 CRANBERRY TWP, PA 16866
 (877) 323-6603

ISSUES AND REVISIONS

NUMBER	DATE	DESCRIPTION

CONSULTANT

PROFESSIONAL SEAL

FOR REFERENCE ONLY

SPROUTS FARMERS MARKET
 #0680
 3111 MAHAN DR. SUITE #18
 TALLAHASSEE, FL 32308
MECHANICAL HOOD SCHEDULES AND DETAILS

DATE: 04/24/26
 DRAWN BY: ML
 CHECKED BY: SW
 BUILD TYPE: EBTS
 PROTOTYPE VERSION: V6.2.9_20250305
 PROJECT NUMBER: 13624-031
 SHEET NUMBER

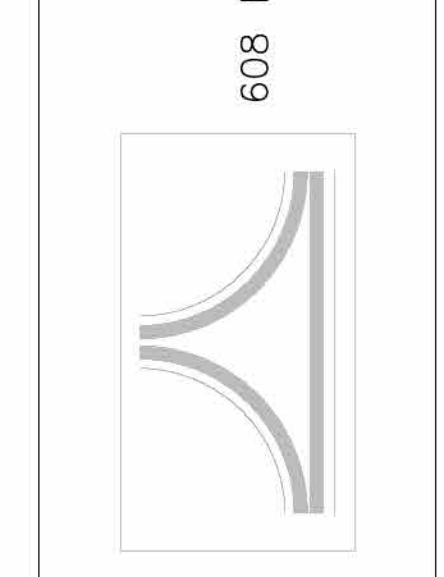
M505

M505 MECHANICAL HOOD SCHEDULES AND DETAILS - #0680

REVISIONS

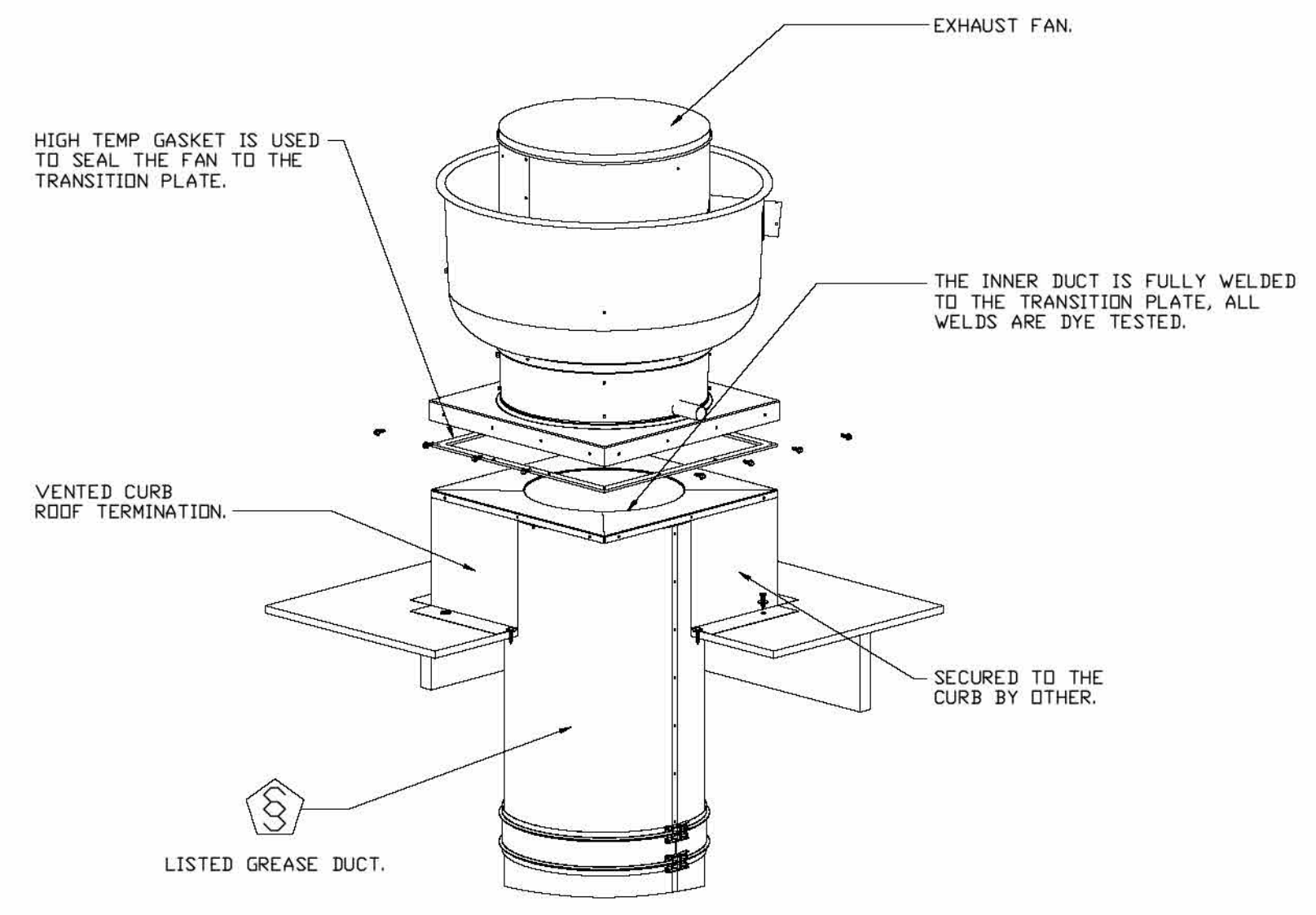
DESCRIPTION	DATE

GREASE MASTER™
 608 MATTHEWS-MINT HILL RD, STE 105, MATTHEWS, NC 28105
 TELEPHONE 704-844-6907, FAX 704-844-8013
 WWW.GREASEMASTER.COM INFO@GREASEMASTER.COM



Sprouts # - Tallahassee, FL
 3111 Mahan Drive, Suite #18
 Tallahassee, FL, 32308

DATE: 3/24/2026
 DWG.#: 8579268
 DRAWN BY: gloriealt
 SCALE: 3/4" = 1'-0"
MASTER DRAWING
SHEET NO.
 6



GREASE DUCT & CHIMNEY SPECIFICATIONS:
 PROVIDE GREASE DUCT EQUAL TO GREASEMASTER MODEL "GDW" ROUND 20 GAUGE 430 STAINLESS STEEL DUCTWORK. MODEL "GDW" IS LISTED TO UL-1978 AND IS INSTALLED USING "V" CLAMP LOCKING CONNECTIONS SEALED WITH 3M FIRE BARRIER 2000 PLUS. MODEL "GDW" DOES NOT REQUIRE WELDING PROVIDING IT HAS BEEN INSTALLED PER THE MANUFACTURES INSTALLATION GUIDE.
 PROVIDE RATED ACCESS DOORS AT EVERY CHANGE IN DIRECTION AND EVERY 12' ON CENTER. PER MANUFACTURES LISTING MODEL "GDW" HORIZONTAL RUNS LESS THAN 75 FT. CAN BE SLOPED 1/16" PER 12", HORIZONTAL RUNS MORE THAN 75 FT. CAN BE SLOPED 3/16" PER 12". DUCT SHOULD BE SLOPED AS MUCH AS POSSIBLE TO REDUCE THE CHANCE OF GREASE ACCUMULATION IN HORIZONTAL RUNS.
 IF THE DUCT OR CHIMNEY IS WITHIN 18 INCHES OF COMBUSTIBLE MATERIAL, PROVIDE UL-2221 OR UL-103 HT LISTED DOUBLE WALL GREASE DUCT OR DOUBLE WALL CHIMNEY EQUAL TO GREASEMASTER MODEL "GDW- 2R, 2R TYPE HT, 3R, OR 3Z" ROUND 20 GAUGE 430 STAINLESS INNER DUCT INSULATED WITH A 24 GAUGE 430 STAINLESS OUTER SHELL.

CUSTOMER APPROVAL TO MANUFACTURE:

APPROVED AS NOTED	<input type="checkbox"/>
APPROVED WITH NO EXCEPTION TAKEN	<input type="checkbox"/>
REVISE AND RESUBMIT	<input type="checkbox"/>
SIGNATURE _____	_____
YOUR TITLE _____	DATE _____

GREASE MASTER IS THE APPROVED PROVIDER OF LISTED PREFABRICATED EXHAUST GREASE DUCT FOR SPROUTS. CONTACT GREASE MASTER DIRECTLY FOR PRICING SHOULD PREFABRICATED DUCT WANT TO USED VS. FIELD WELDED DUCT.

NOTE:
 THE DOCUMENTATION CONTAINED ON THIS SHEET WAS NOT PREPARED BY HENDERSON ENGINEERS AND IS INCLUDED IN THIS SET FOR REFERENCE ONLY. HENDERSON ENGINEERS REVIEWED THE DOCUMENTATION ON THIS SHEET FOR GENERAL COMPLIANCE WITH DESIGN INTENT. SUPPLIER IS RESPONSIBLE THAT ALL FURNISHED EQUIPMENT ON THIS SHEET COMPLIES WITH APPLICABLE LOCAL, STATE, AND FEDERAL LAWS, CODES, AND REGULATIONS.