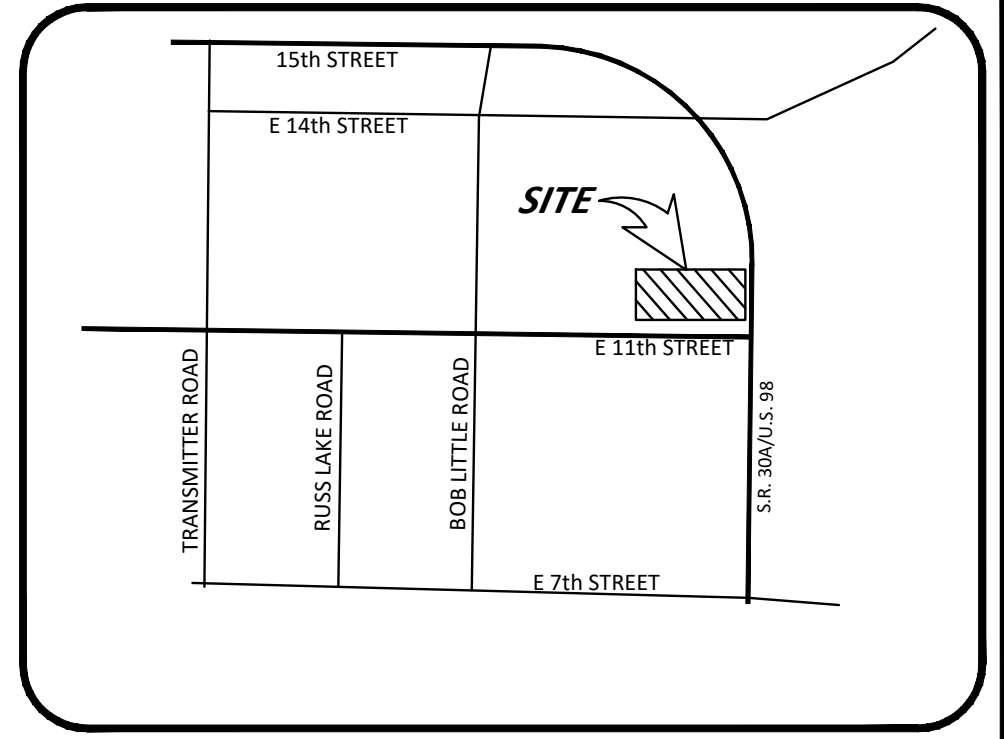
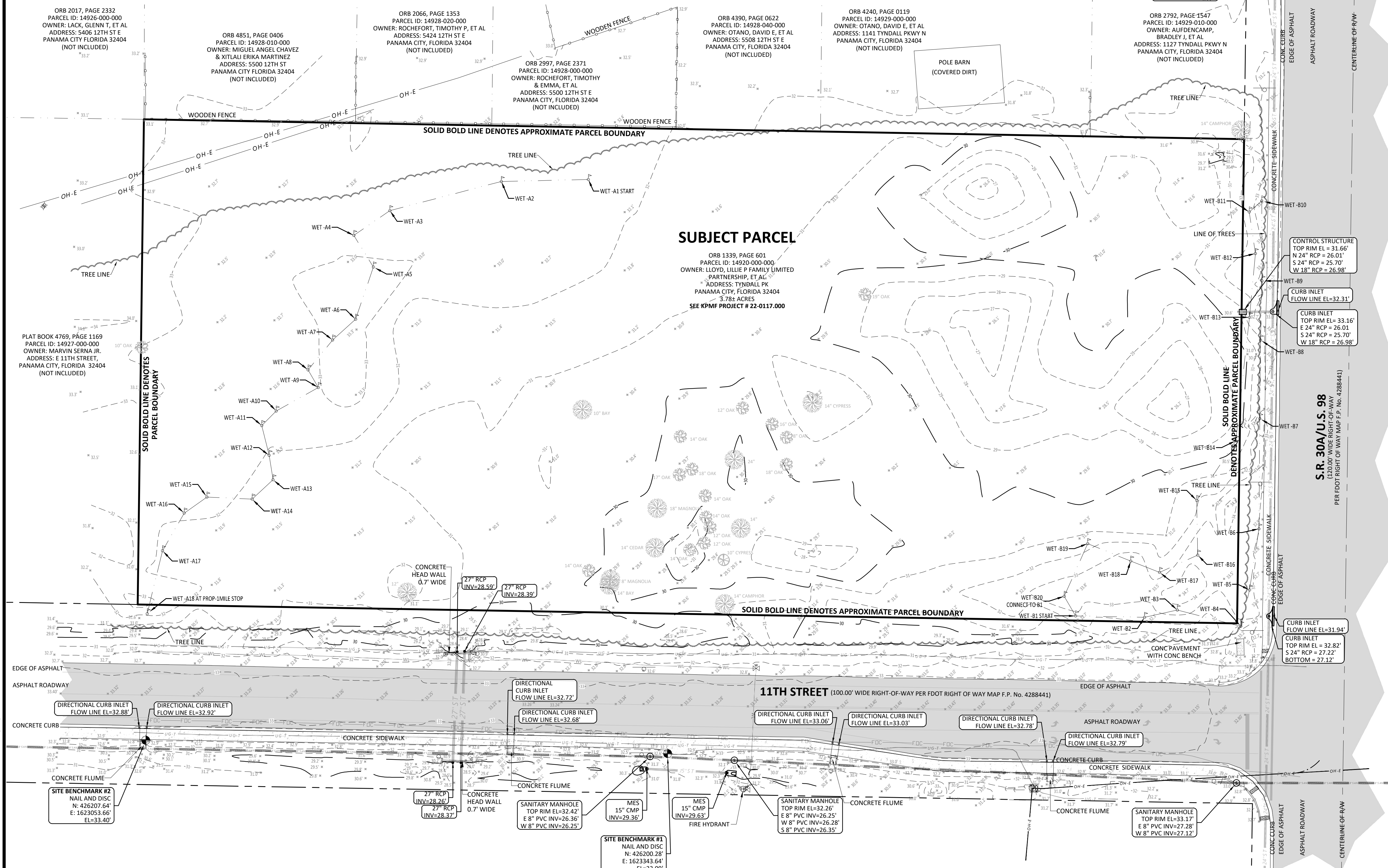


MAP OF TOPOGRAPHIC SURVEY

A PARCEL OF LAND LYING WITHIN A PORTION OF SECTION 1 TOWNSHIP 4 SOUTH, RANGE 14 WEST, BAY COUNTY, FLORIDA



SURVEYOR'S REPORT:

- THIS IS A TOPOGRAPHIC SURVEY, AS DEFINED IN CHAPTER 51-17.05(1) OF THE FLORIDA ADMINISTRATIVE CODE (FAC). MORE SPECIFICALLY THE PURPOSE OF THIS SURVEY, WAS TO CONVEY IMPROVEMENTS TOPOGRAPHICALLY. THIS IS NOT A BOUNDARY SURVEY.
- THE ACCURACY STANDARD USED FOR HORIZONTAL CONTROL FOR THIS SURVEY EXCEEDS A MINIMUM RELATIVE DISTANCE OF 1 FOOT IN 10,000 FEET. ("STANDARDS OF PRACTICE (S)-17.051 FAC") PURSUANT TO SECTION 472.027, FLORIDA STATUTES.
- THE HORIZONTAL CONTROL NETWORK WAS COMPLETED UTILIZING A TOPCON HIPER VR GNSS RECEIVER. THE CONTROL FOR THIS SURVEY IS BASED ON REDUNDANT RTK (REAL TIME KINEMATICS) OBSERVATIONS BASED ON FFRN (FLORIDA PERMANENT REFERENCE NETWORK).
 - THE REDUNDANT RTK (REAL TIME KINEMATICS) OBSERVATIONS WERE PERFORMED TO ESTABLISH THE PRIMARY NETWORK CONTROL. THE OBSERVATIONS WERE PERFORMED ON MAY 15, 2022.
 - A FIELD TRAVERSE WAS USED TO ESTABLISH INTERMITTENT CONTROL BETWEEN THE GPS POINTS. HORIZONTAL CONTROL IS BASED ON FLORIDA STATE PLANE COORDINATE NORTH (9011 NAD (NORTH AMERICAN DATUM) 1983/2011AD).
- THE ACCURACY STANDARD USED FOR THE VERTICAL CONTROL FOR THIS SURVEY MEETS OR EXCEEDS THE REQUIREMENT CLASSIFIED IN THE STANDARDS OF PRACTICE (S)-17.051 FAC). THE MAXIMUM ERROR OF ACCURACY ALLOWED FOR THIS TYPE OF SURVEY IS 0.05 TIMES THE SQUARE ROOT OF THE DISTANCE IN MILES (0.05*V^{1/2}). THE ACCURACY OBTAINED BY MEASUREMENT AND CALCULATION EXCEEDS THIS REQUIREMENT.
- VERTICAL CONTROL IS BASED ON GPS LEVELING UTILIZING THE FLORIDA PERMANENT REFERENCE NETWORK.
 - VERTICAL DATA IS BASED ON NAVD (NORTH AMERICAN VERTICAL DATUM) 1988 (U.S. SURVEY FOOT).
 - VERTICAL DATA IS BASED ON NGS CONTROL POINT DESIGNATED AS "Q-780," PID=DQ8032, ELEV=26.26' (NORTH AMERICAN VERTICAL DATUM) 1988 (U.S. SURVEY FOOT)
 - TWO TEMPORARY BENCH MARKS WERE SET ON THE SITE.
- DISTANCES THAT WERE MEASURED WITH E.D.M. EQUIPMENT HAVE BEEN ADJUSTED FOR TEMPERATURE.
- PROPERTY LINES SHOWN HEREON WERE COMPUTED FROM THE EXISTING PUBLIC RECORDS OF BAY COUNTY, FLORIDA AND ARE BASED ON FOUND MONUMENTATION. MONUMENT SYMBOLS SHOWN HEREON ARE NOT TO SCALE.
- INSTRUMENTS OF RECORD REFLECTING EASEMENTS, ENCUMBRANCES, RIGHTS-OF-WAY, AND/OR OWNERSHIP WERE FURNISHED TO THIS SURVEYOR, AS SHOWN. LANDS SHOWN HEREON WERE ABSTRACTED FOR SUCH BY FIRST AMERICAN TITLE INSURANCE COMPANY, FILE NUMBER NCS-1122547A-NAS, THROUGH A PERIOD ENDING ON AUGUST 18, 2025 AT 8:00AM.
- SURVEYOR'S LIABILITY FOR THE DOCUMENT SHALL BE LIMITED TO THE ORIGINAL PURCHASER AND DOES NOT EXTEND TO ANY OTHER ENTITIES WITHOUT AN EXPRESSED RE-CERTIFICATION BY WHOSE SIGNATURE APPEARS UPON THE SURVEY.
- ABOVE GROUND UTILITIES SHOWN WERE LOCATED BY FIELD OBSERVATIONS. UTILITIES SYMBOLS ARE NOT TO SCALE.
 - G.P.R. (GROUND PENETRATING RADAR) WAS UTILIZED DURING THIS SURVEY AND MARKED UTILITIES WERE LOCATED AND SHOWN HEREON.
 - McKIM & CREED, 7003 UNIVERSITY BLVD, ORLANDO, FL 32792, SERVED AS A SUBCONSULTANT TO KPMFRANKLIN FOR THIS PROJECT, PROVIDING SUBSURFACE UTILITY ENGINEERING AT AREAS SPECIFIED BY THE CLIENT AND/OR THIS FIRM, INCLUDING ASCE 38-02 QUALITY LEVEL "B" ELECTROMAGNETIC AND GEOPHYSICAL PROSPECTING SERVICES IN CONJUNCTION WITH ASCE 38-02 QUALITY LEVELS "C" AND "D."
 - NO S.U.E. (SUBSURFACE UTILITY ENGINEERING) QUALITY ASCE 38-02 LEVEL "A", WHICH INVOLVES EXCAVATION AND EXPOSURE OF SUBSURFACE UTILITIES, WAS PERFORMED.
- THIS PROPERTY LIES WITHIN FLOOD ZONE X AND A WHERE NO BASE FLOOD ELEVATION WAS DETERMINED FROM THE CURRENT FEMA FLOOD RATE MAPS AND IS REFLECTED ON THE SURVEY. THE MAP IDENTIFICATION IS MAP NUMBER 12005C0362J WITH AN EFFECTIVE DATE OF OCTOBER 10, 2024.
- ONE FOOT CONTOUR INTERVALS ARE SHOWN HEREON.
- PRIOR TO ANY CONSTRUCTION, EXCAVATION OR ANY DISTURBANCE OF THE EXISTING GROUND ELEVATION, THE OWNER AND/OR CONTRACTOR SHOULD ASSUME RESPONSIBILITY OF CONTACTING THE LOCAL UTILITY AUTHORITIES FOR EXACT LOCATION OF UNDERGROUND GAS LINES, TELEPHONE LINES, ELECTRIC CABLES, WATER LINES, ETC. TO AVOID ANY HAZARD OR CONFLICT.
- ALL TYPES, SIZES, LOCATIONS, GRADES, ETC. OF ALL FEATURES, SHOULD BE VERIFIED BY CONTRACTOR PRIOR TO CONSTRUCTION.
- THIS SURVEY DOES INCLUDE THE LOCATION OF POSSIBLE WETLAND, JURISDICTIONAL BOUNDARIES, OR HABITATS FOR PROTECTED SPECIES AS SHOWN. WETLAND DEMARCATION FLAGS SHOWN HEREON PROVIDED BY (CYPRUS ENVIRONMENTAL OF BAY CO., LLC), HAVING OFFICES AT (2532 LISENBY, PO BOX 16062, PANAMA CITY, FL 32406), AND WERE LOCATED BY THIS FIRM ON (SEPTEMBER 3, 2025).
- ADDITIONS OR DELETIONS TO SURVEY MAPS OR REPORTS BY OTHER THAN THE SIGNING PARTY OR PARTIES IS PROHIBITED WITHOUT EXPRESSED WRITTEN CONSENT OF THE SIGNING PARTY OR PARTIES.
- TREE SYMBOLS, IF ANY, ARE NOT TO SCALE. TREE DIAMETER BREAST HEIGHT IS DENOTED BY EACH TREE ON THIS SURVEY. TREE SIZE AND SPECIES SHOULD BE VERIFIED BY A REGISTERED LANDSCAPE ARCHITECT (R.L.A.), ARBORIST OR PERSON OF A SIMILAR PROFESSION AS DEFINED BY THE LOCAL MUNICIPALITY.

222 CHURCH STREET, PANAMA CITY, FL 32404
PHONE (904) 846-1216
COA 32069 LB 6605

REVNO	DATE	DESCRIPTION
1		
2		
3		
4		
5		
6		
7		
8		
9		
10		

- TREE LEGEND:**
- UNKNOWN TREE SPECIES
 - CYPRESS TREE
 - OAK TREE
 - PALM TREE
 - PINE TREE
 - TREE LINE
- HATCH LEGEND:**
- ASPHALT SURFACE
 - CONCRETE SURFACE
 - DIRT DRIVEWAY
 - DETECTABLE WARNING

- LINE LEGEND:**
- STORM DRAIN PIPE
 - UNDERGROUND TELEPHONE LINE
 - UNDERGROUND POWER LINE
 - OVERHEAD POWER LINE
 - FIBER OPTIC CABLE
 - FORCE MAIN SANITARY LINE
 - GAS LINE
 - HANDRAIL
 - CHAINLINK FENCE
 - WOODEN FENCE
 - RIGHT OF WAY LINE
 - MINOR CONTOUR LINE
 - MAJOR CONTOUR LINE
 - WETLAND FLAG

- SYMBOLS LEGEND:**
- PARKING SPACES
 - BOLLARD
 - CATCH BASIN
 - ELECTRIC RISER
 - FIRE HYDRANT
 - FIBER OPTIC MARKER
 - GUY WIRE ANCHOR
 - LIGHT POLE
 - ELECTRIC CONTROL PANEL
 - MITERED END SECTION
 - STORM DRAIN MANHOLE
 - SANITARY MANHOLE
 - WOOD UTILITY POLE
 - UTILITY VAULT
 - STREET SIGN
 - BACKFLOW PREVENTER
 - SANITARY VALVE
 - WATER VALVE

- ABBREVIATIONS LEGEND:**
- ADJ ADJUSTED
 - ALTA AMERICAN LAND TITLE ASSOCIATION
 - (C) CALCULATED DATA
 - COA CERTIFICATE OF AUTHORIZATION
 - CONC CONCRETE
 - CLK CHAINLINK
 - (D) DEED DATA
 - E.A.M. ELECTRONIC DISTANCE MEASUREMENT
 - EL/ELEV ELEVATION
 - FAC FLORIDA ADMINISTRATIVE CODE
 - FEMA FEDERAL EMERGENCY MANAGEMENT AGENCY
 - G.P.R. GROUND PENETRATING RADAR
 - GPS GLOBAL POSITIONING SYSTEM
 - ID IDENTIFICATION
 - INV INVERT
 - LB LICENSED BUSINESS
 - LS LICENSED SURVEYOR
 - (M) MEASURED DATA
 - NSPS NATIONAL SOCIETY OF PROFESSIONAL SURVEYORS
 - ORB OFFICIAL RECORDS BOOK
 - (P) PLAT DATA
 - (P-C) PLAT CALCULATED
 - P.O.B. POINT OF BEGINNING
 - P.O.C. POINT OF COMMENCEMENT
 - PVC POLYVINYL CHLORIDE
 - PCP REINFORCED CONCRETE PIPE
 - RTK REAL TIME KINEMATICS
 - R/W RIGHT-OF-WAY
 - SEC SECTION
 - S.U.E. SUBSURFACE UTILITY ENGINEERING
 - (TYP) TYPICAL
 - U.S. UNITED STATES
 - CMP CORRUGATED METAL PIPE

PROJECT INFORMATION:

FIELD DATE: 8/21/25, 9/11/25
 PARTY CHIEF: WY, RF
 DRAWN BY: ELM
 CHECKED BY: MWH
 APPROVED BY: MWH
 JOB NUMBER: 25-0236.000
 DRAWING: 25-0236.000 CALLAWAY FSER - topo.dwg
 DRAWING DATE: 8/27/25
 FIELD BOOK: 655

MAP OF TOPOGRAPHICAL SURVEY

CALLAWAY FSER

CAUTION

IF THIS SCALE BAR DOES NOT MEASURE 1" THE DOCUMENT IS NOT TO SCALE

DATE:	09-12-2025
JOB NO.:	25-0236.000
DESIGNER:	ELM
DRAWN BY:	MWH
CHECKED BY:	
APPROVED BY:	
SHEET NO.:	1 OF 1

S:\PROJECT SURVEY PROJECTS\25-0236.000 CALLAWAY FSER - TOPO.DWG - 9/12/2025 5:19 PM