

GRAPHIC	TYPE	DESCRIPTION
		LIGHT FIXTURE - SEE ELECTRICAL
	TYPE C1	1/2" AQUATOUGH GYPSUM BOARD ON 1X P.T. FURRING SECURED TO BOTTOM CHORD OF WOOD TRUSSES, PAINT AS SCHEDULED
	D1 8'-0"	EXTERIOR FINISH SYSTEM ON 5/8" EXTERIOR GYPSUM SHEATHING ON 3-5/8" METAL STUD FRAMING
	D2 8'-0"	VENTED FIBER CEMENT PANEL SECURED TO BOTTOM CHORD OF TRUSS, PROVIDE 1X4 BATTEN AT JOINTS, PAINT PT-2

J1 CEILING LEGEND AND NOTES
1/8" = 1'-0"

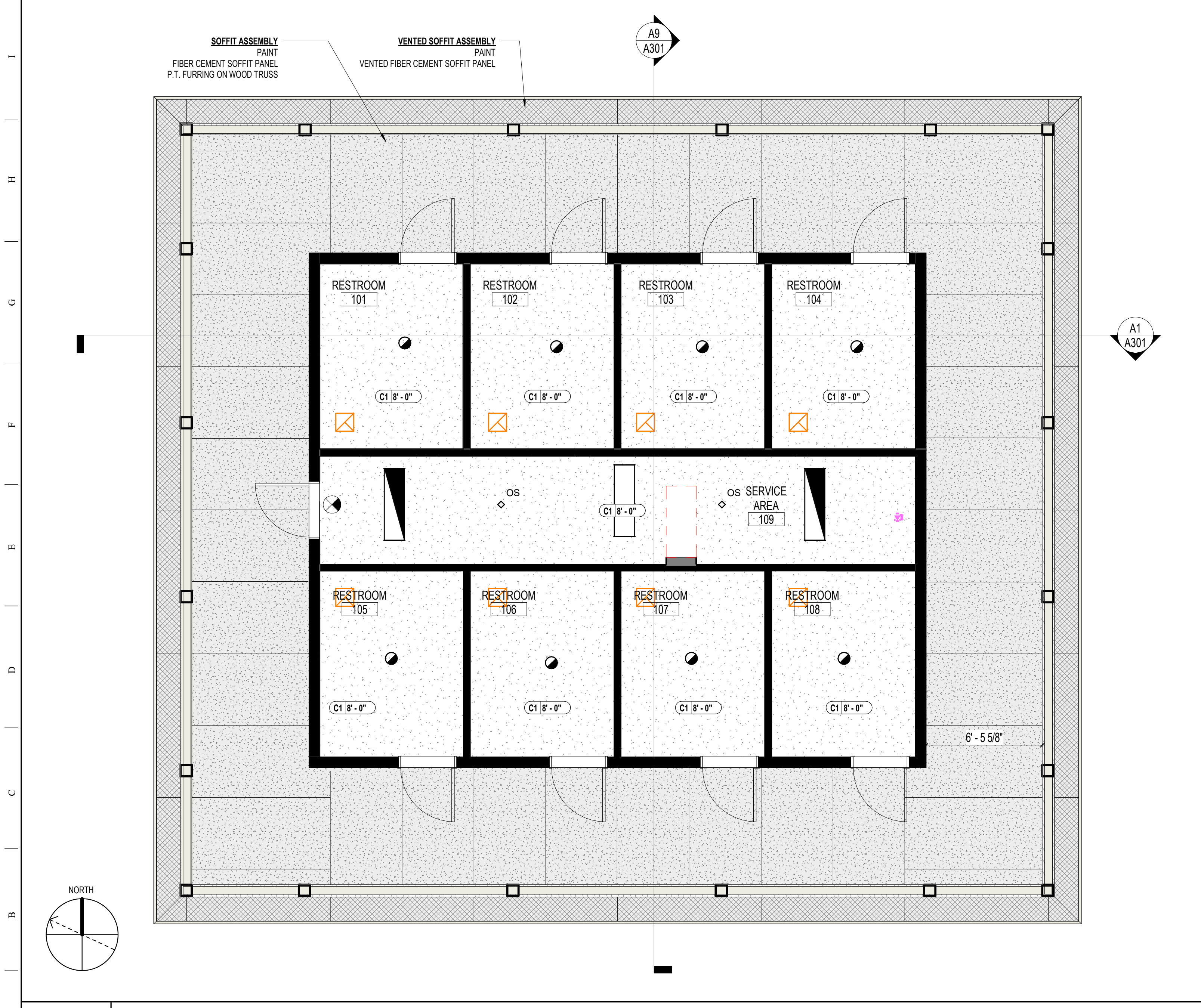
REFLECTED CEILING PLAN GENERAL NOTES

- THIS REFLECTED CEILING PLAN IS PROVIDED TO DOCUMENT CEILING DESIGN INTENT. SEE ALSO MECHANICAL AND ELECTRICAL DOCUMENTATION FOR COMPLETE INFORMATION INCLUDING SWITCH LOCATION, CIRCUITING AND WIRING LAYOUT. ALL MEP-FP DEVICE LOCATIONS NOT SHOWN ON DRAWINGS, OR IN CONFLICT WITH MEP-FP DRAWINGS, ARE TO BE COORDINATED WITH ARCHITECT PRIOR TO INSTALLATION. IN THE EVENT OF DISCREPANCIES BETWEEN THE ARCHITECT'S REFLECTED CEILING PLAN AND THE ENGINEER'S PLANS, IMMEDIATELY NOTIFY THE ARCHITECT IN WRITING BEFORE ORDERING MATERIALS OR PROCEEDING WITH THE WORK.
- IN ALL ROOMS OR AREAS, THE CONTRACTOR SHALL ESTABLISH A SINGLE FLOOR ELEVATION THAT IS TO BE USED AS THE ORIGIN FOR ALL CEILING HEIGHTS ABOVE FINISHED FLOOR.
- VERIFY FIELD CONDITIONS AND LOCATIONS OF ALL MEP-FP AND STRUCTURAL ELEMENTS. CONTRACTOR TO COORDINATE THE WORK OF ALL TRADES NECESSARY TO MAINTAIN THE FINISHED CEILING HEIGHTS INDICATED. INSTALL DUCTWORK TIGHT TO UNDERSIDE OF BEAMS, WITH A SMALL SPACE TO AVOID VIBRATION. INSTALLATION AND/OR ALTERATION OF DUCTWORK, PIPING OR OTHER EQUIPMENT THAT WILL REQUIRE FASCIAS, SOFFITS AND OTHER TRANSITIONS IN CEILING HEIGHT SHALL BE REVIEWED WITH THE ARCHITECT PRIOR TO PROCEEDING. CONTRACTOR TO PROVIDE COMPLETE COORDINATION DRAWINGS FOR THE ARCHITECT AND ENGINEER'S REVIEW.
- PROVIDE BLOCKING ABOVE CEILING REQUIRED FOR ALL CEILING MOUNTED EQUIPMENT. PROVIDE ADDITIONAL SUPPORT FOR LIGHT FIXTURES AS RECOMMENDED BY FIXTURE MANUFACTURER.
- PROVIDE CEILING ACCESS REQUIRED FOR EQUIPMENT AND SYSTEM MAINTENANCE. MATCH ADJACENT CEILING FINISH U.N.O. SYSTEMS AND EQUIPMENT REQUIRING ACCESS SHALL BE LOCATED AT ACCESSIBLE CEILING ACCESS PANELS NOT SHOWN ON DRAWINGS SHALL NOT BE INSTALLED IN GYPSUM BOARD CEILING WITHOUT PRIOR APPROVAL.
- ALL ACCESS PANELS IN GYPSUM BOARD CEILINGS SHALL BE FRAMELESS. LOCATIONS SHALL BE COORDINATED WITH ARCHITECT. GROUP DEVICES TO MINIMIZE THE NUMBER AND SIZE OF ACCESS PANELS.
- ALL CONDUITS, BOXES, DUCTS, HVAC UNITS, PIPES, ETC., SHALL BE INSTALLED AS HIGH AS POSSIBLE, NOT LOWER THAN 8" ABOVE LINE OF HIGHEST FINISHED CEILING.
- THERE SHALL BE NO COMBUSTIBLE MATERIALS IN THE PLENUM SPACE.

FINISH PLAN GENERAL NOTES

- ALL FINISH SELECTIONS IDENTIFIED IN LEGENDS, SCHEDULES, AND SPECIFICATIONS ARE NOT SUBJECT TO 'OR EQUAL' SUBSTITUTIONS U.N.O. THE CONTRACTOR AND SUBCONTRACTORS SHALL SUBMIT PRODUCTS AND FINISHES AS INDICATED IN THE DOCUMENTS.
- NOTIFY ARCHITECT OF SCHEDULED FINISHES THAT ARE UNAVAILABLE OR DISCONTINUED AT THE EARLIEST OPPORTUNITY SUCH THAT A SUBSTITUTION CAN BE SELECTED WITHOUT JEOPARDIZING THE CONSTRUCTION SCHEDULE.
- INSTALL ALL FINISH MATERIALS IN ACCORDANCE WITH THE MANUFACTURER'S RECOMMENDED SPECIFICATIONS, SURFACE PREPARATION, ADHESIVES AND BACKINGS. INCLUDING WALLCOVERINGS, COATINGS, FLOORING MATERIALS, LAMINATES, ETC.
- FLOOR MATERIAL TRANSITIONS AT DOOR OPENINGS ARE TO BE CENTERED BELOW THE DOOR IN THE CLOSED POSITION, UNLESS NOTED OTHERWISE. SEE ALSO TRANSITION DETAILS THIS SHEET.
- PROVIDE TRANSITION STRIPS AT ALL FLOORING MATERIAL CHANGES, UNLESS NOTED OTHERWISE.
- REFER TO ELEVATIONS FOR ACCENT TILE LOCATION, TYPICAL.
- ACCESS PANELS, VISIBLE COVES OR ENCASEMENTS, VISIBLE ELECTRICAL PANELS, ETC. TO SHALL BE PAINTED TO MATCH ADJACENT SURFACES.
- ALL EXPOSED FERROUS METAL SURFACES INCLUDING JOISTS, TRUSSES, BEAMS, DRAINS & LEADER PIPES, PLUMBING PIPES, HANGARS, STRAPS, A.C. DUCTS, ELECTRICAL CONDUITS AND OTHER MISCELLANEOUS ITEMS, IF NOT REQUIRED TO BE SHOP PRIMED, SHALL RECEIVE ONE (1) COAT OF PRIMER FOR GALVANIZED OR NON-GALVANIZED METAL (AS THE CASE MAY BE) PLUS TWO (2) COATS OR PAINT AS INDICATED IN THE FINISH SCHEDULE AND SPECIFICATIONS.
- PROVIDE SCHLUTER METAL EDGE TRIM AT WALL TILE OUTSIDE CORNERS AND END CAPS, TYPICAL.

KEYNOTE LEGEND	
MARK	DESCRIPTION



Room Schedule						
Number	Name	Wall Finish	Base Finish	Floor Finish	Ceiling Finish	Comments
101	RESTROOM	CT-1 / CT-2	CT-3	CT-3	PT-2	
102	RESTROOM	CT-1 / CT-2	CT-3	CT-3	PT-2	
103	RESTROOM	CT-1 / CT-2	CT-3	CT-3	PT-2	
104	RESTROOM	CT-1 / CT-2	CT-3	CT-3	PT-2	
105	RESTROOM	CT-1 / CT-2	CT-3	CT-3	PT-2	
106	RESTROOM	CT-1 / CT-2	CT-3	CT-3	PT-2	
107	RESTROOM	CT-1 / CT-2	CT-3	CT-3	PT-2	
108	RESTROOM	CT-1 / CT-2	CT-3	CT-3	PT-2	
109	SERVICE AREA	PT-1	VB-1	FP-1	PT-2	

MATERIAL FINISH SCHEDULE			
CERAMIC TILE			
CT-1	AMERICAN OLEAN	4" X 4" DESIGNER WHITE #61, MATTE FINISH - WALL TILE FIELD	GROUT, 1/8", MAPEI #00 WHITE EPOXY, STACKED BOND
CT-2	AMERICAN OLEAN	4" X 4" ALMOND #87, MATTE FINISH - WALL TILE ACCENT	GROUT, 1/8", MAPEI #00 WHITE EPOXY, STACKED BOND
CT-3	AMERICAN OLEAN	2" X 2" MOSAIC FLOOR TILE, WILLOW SPECKLE	GROUT, 1/8", COLOR TBD (DARK), 4X12 BUILD UP BASE
EPOXY FLOOR COATING			
FP-1			SEE SPECIFICATIONS
EXTERIOR PAINT			
EPT-1	BENJAMIN MOORE	#HC-170 STONINGTON GRAY	SEE SPECIFICATIONS
EPT-2	BENJAMIN MOORE	#2142-70 ICICLE	SEE SPECIFICATIONS
INTERIOR PAINT			
PT-1	BENJAMIN MOORE	#OC-17 WHITE DOVE	SEE SPECIFICATIONS
PT-2	BENJAMIN MOORE	#OC-162 SUPER WHITE	SEE SPECIFICATIONS
VINYL BASE			
VB-1	BURKE	MERCER 4" COVE 37, GREXE FINISH	SEE SPECIFICATIONS

A1 REFLECTED CEILING PLAN
1/4" = 1'-0"

Department of Environmental Protection
Division of Recreation and Parks
Bureau of Design and Construction
3800 Commonwealth Blvd., Tallahassee, FL 32399 (851) 425-2300

ISSUE DATE: 04/10/2024
COMP FILE NO: 61437C
START PROJECT NO: 61437C

DESIGNER: CPH
DRAWN BY: CPH
REVIEWED BY: BKS

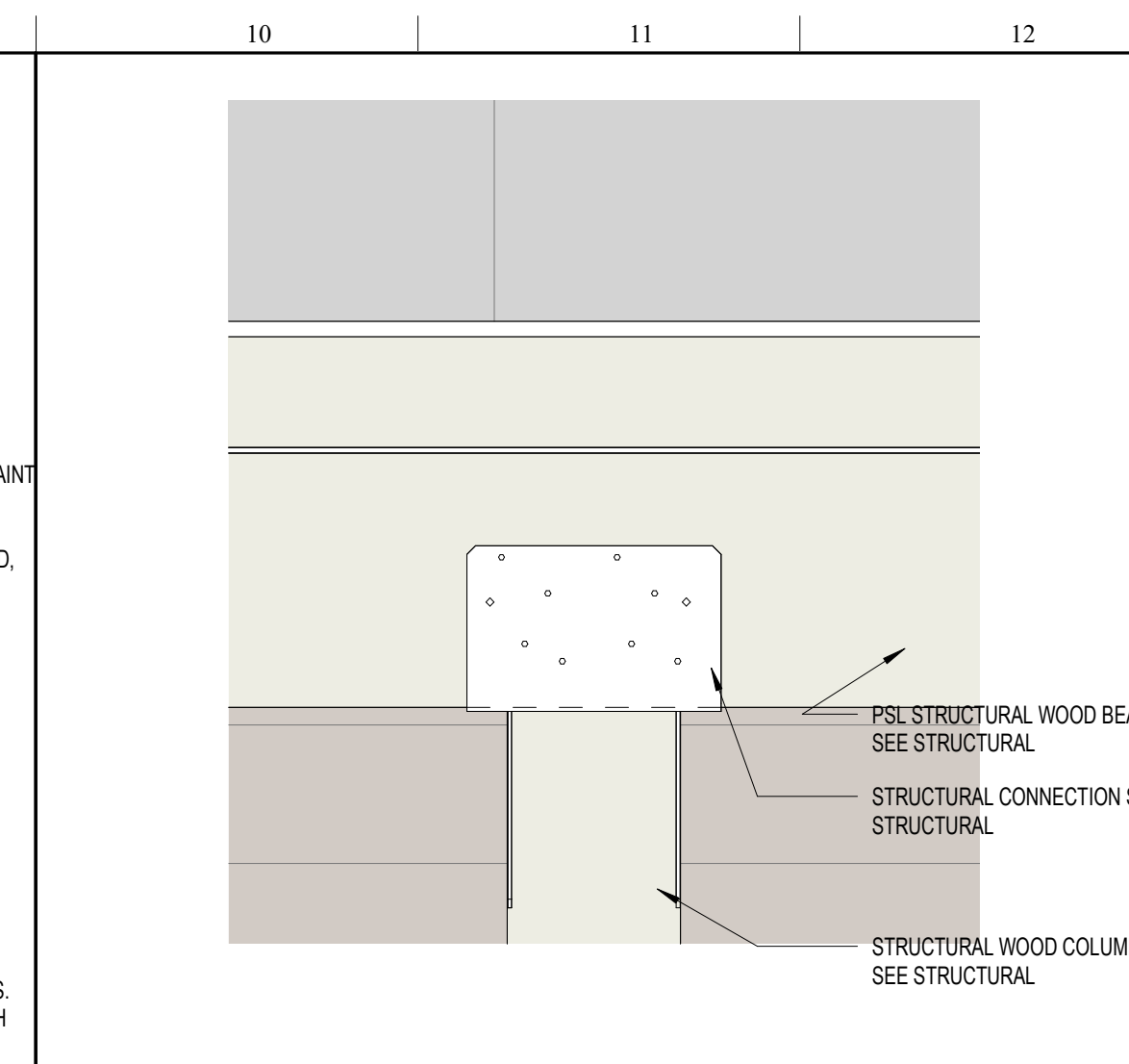
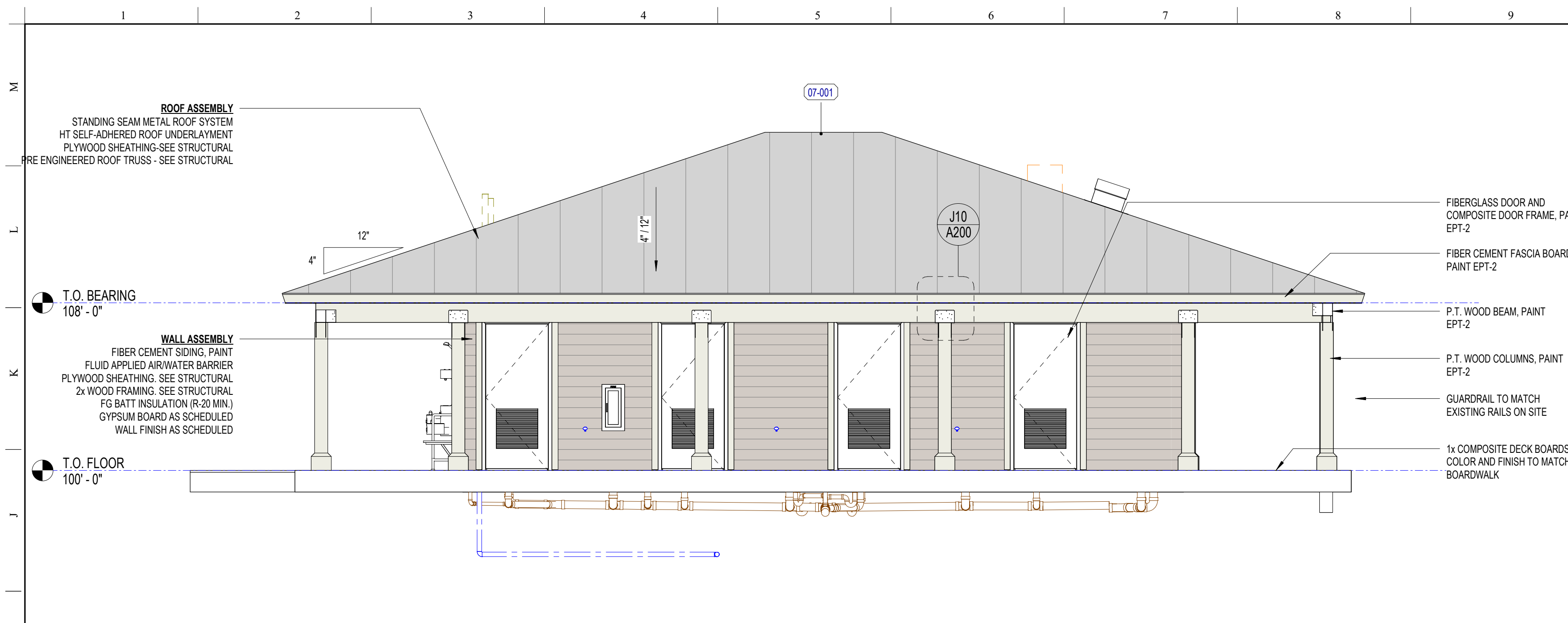
PROFESSIONAL REGISTRATION
CPH CONSULTING LLC
LICENSE NUMBER - #92946

PROJECT TITLE
WILLIAM J. "RISH" PARK
REFLECTED CEILING PLAN

SHEET TITLE
BEACH SIDE DAY USE RESTROOM

SHEET NO.
A141

A Full Service A & E Firm
Professional Engineer
Professional Architect
Professional Landscape Architect
www.cphcorp.com



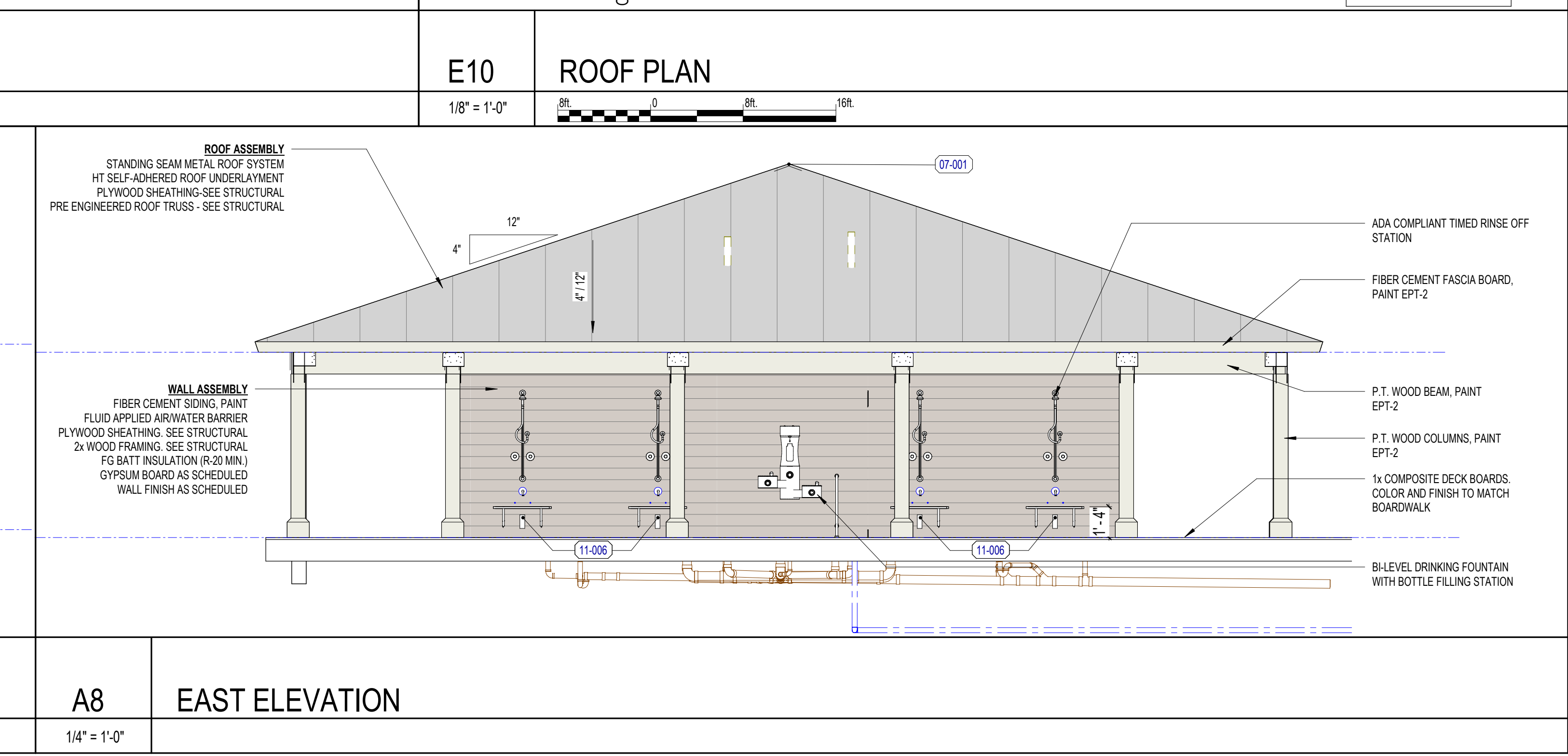
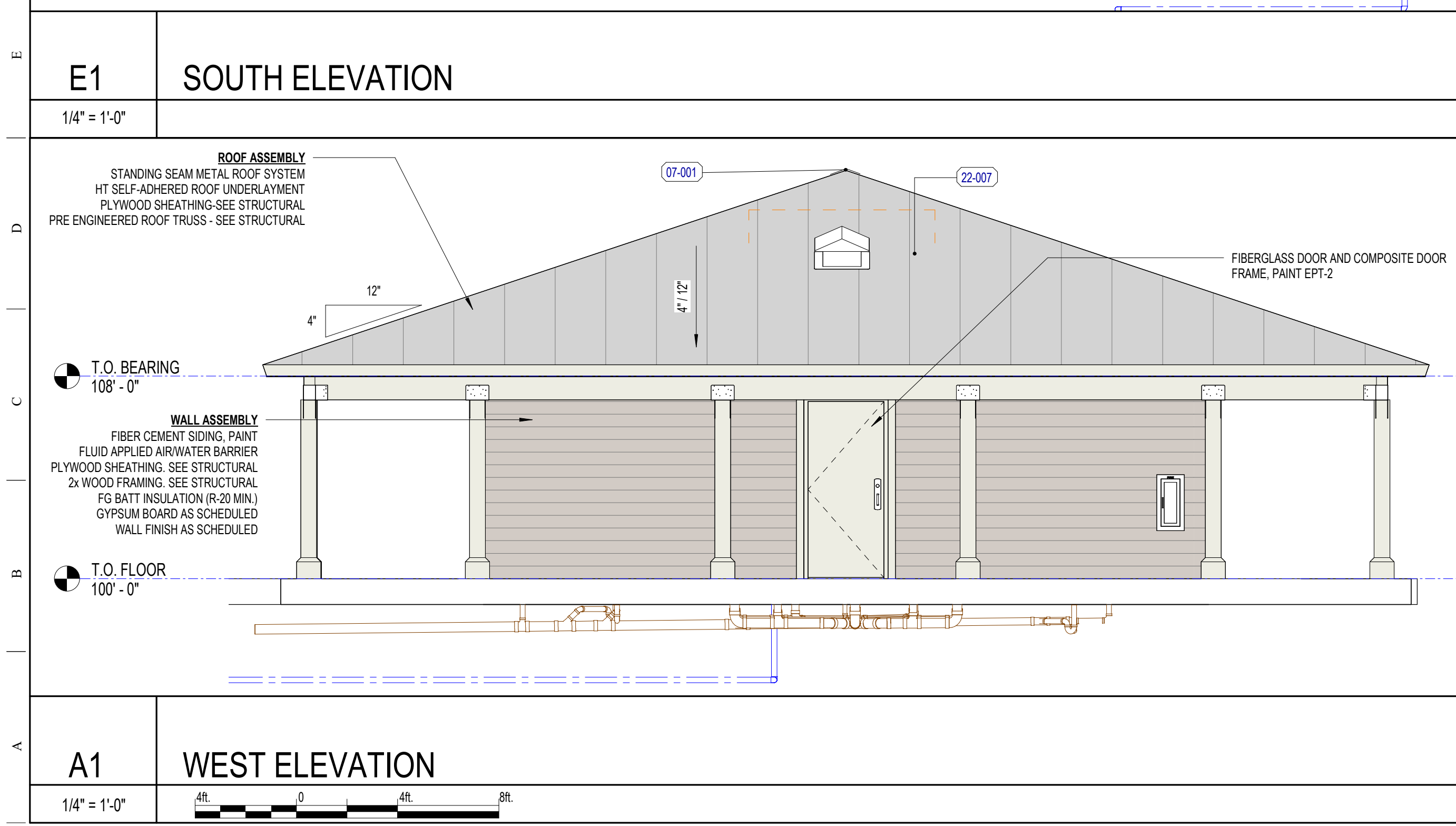
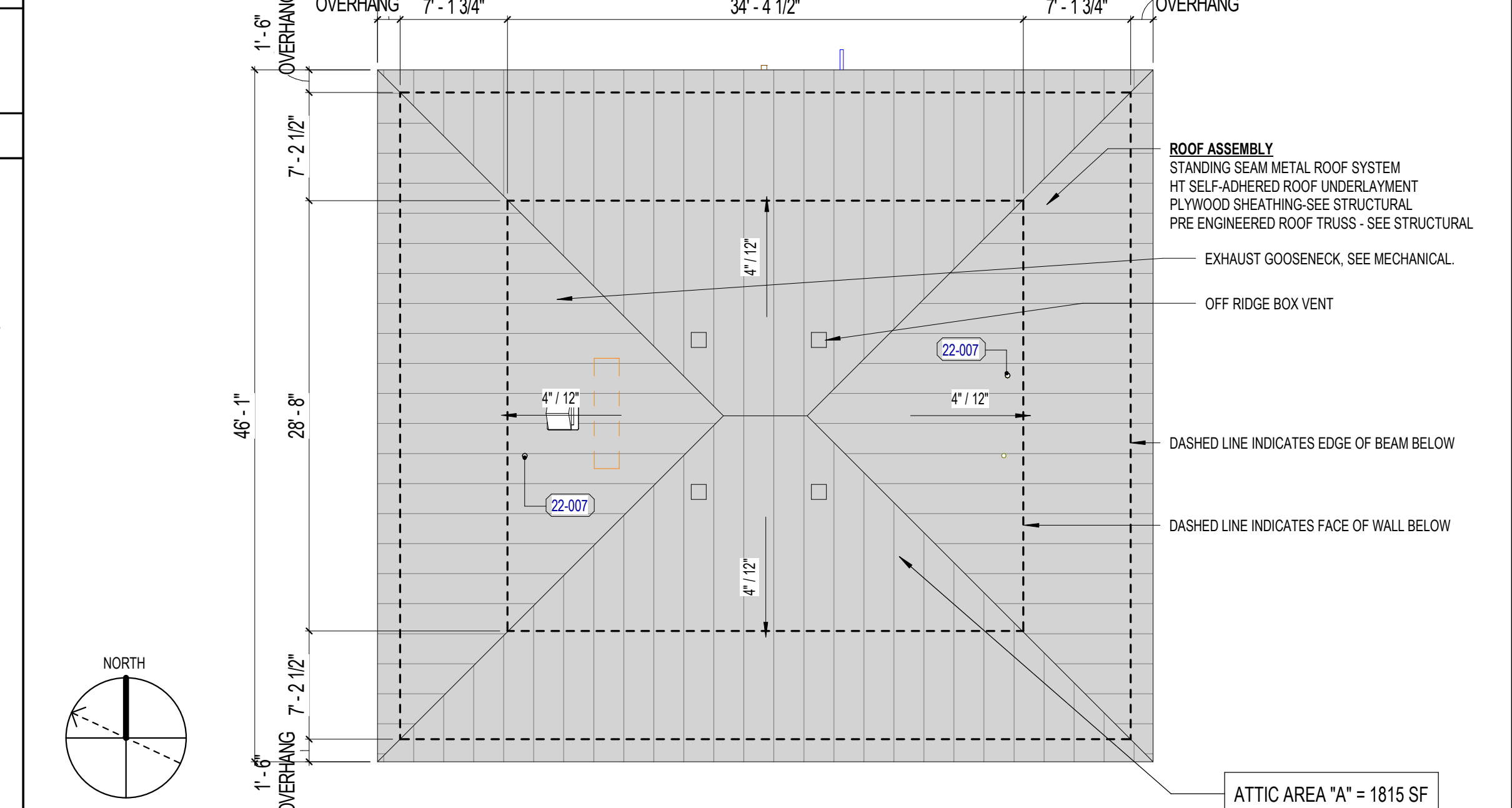
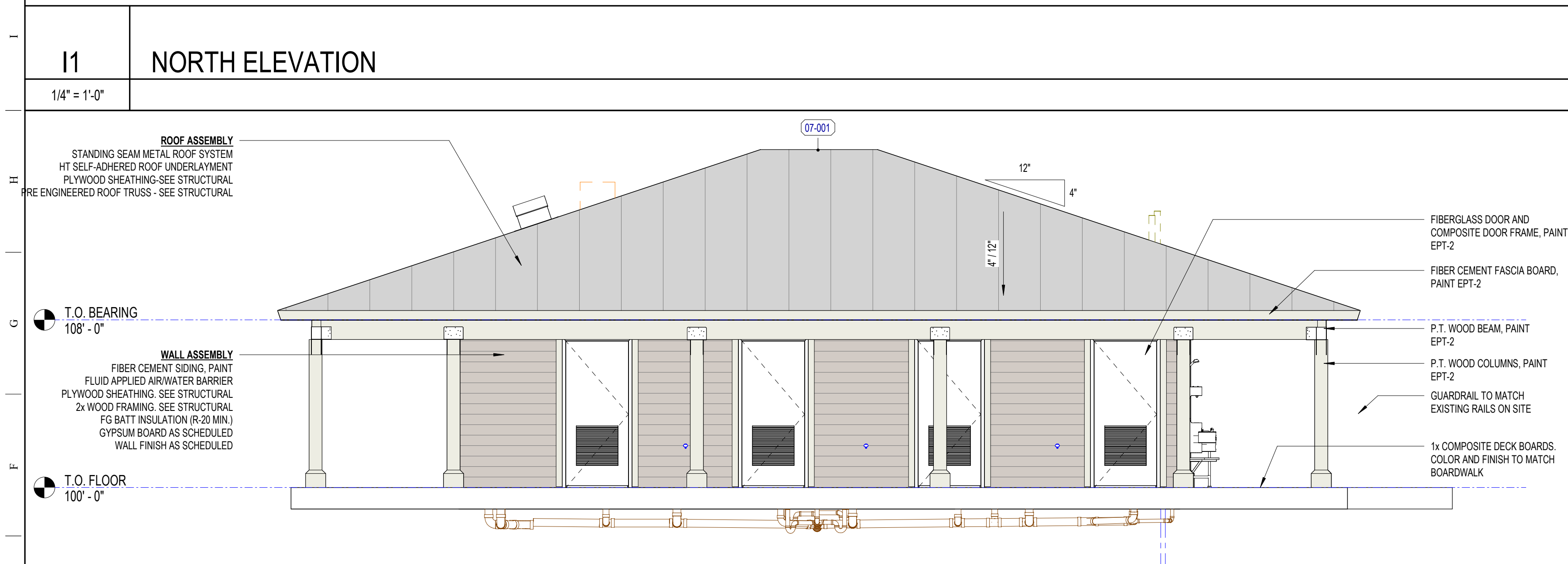
J13 ROOF VENTILATION CALCULATIONS
NOT TO SCALE

KEYNOTE LEGEND

MARK	DESCRIPTION
07-001	RIDGE VENT TO MATCH ROOF COLOR
11-006	FOLDING BENCH
22-007	VENT THROUGH ROOF - SEE PLUMBING FOR LOCATION

Section 1203 Ventilation

Attic Area "A"	
Square Feet (SF) of Attic Space	2381 SF
Required Net Free Area (NFA) Ventilation	300 SF
SF of Ventilation Required	2381 SF / 300 SF = 7.94 SF
Required Upper Portion NFA	7.93 SF / 2 = 3.97 SF
Square Inches (SI) of Ventilation Required	3.96 SF x 144 = 571 SI
Provided NFA Thru Ridge Vents	12 SI per LF of Ridge Vent = 0 LF of Ridge Vent
Provided NFA Thru Box Vents	12 SI/LF x 0 LF of Ridge Vent = 0 SI
Total Upper Portion Net Free Area (NFA)	150 SI / Unit = 600 SI
Required Lower Portion NFA	7.93 SF / 2 = 3.97 SF
Square Inches (SI) of Ventilation Required	3.96 SF x 144 = 571 SI
Provided SF of Vented Soffit	5 SI per LF of Soffit = 196 LF of Soffit = 980 SI



DATE: _____
REVISION: _____
SYMBOL: _____
DATE: _____
REVISION: _____
SYMBOL: _____

ISSUE DATE: 04/10/2024
COMP FILE NO: 61437C
START PROJECT NO: 61437C

DESIGNER: CPH
DRAWN BY: CPH
REVIEWED BY: BKS

PROFESSIONAL REGISTRATION
CPH CONSULTING, LLC
LICENSE NUMBER: 4892446

A Full Service A & E Firm
Architectural
Mechanical
Electrical
Environmental
Structural
Landscape Architects
www.cphncorp.com

WILLIAM J. "RISH" PARK
BUILDING ELEVATIONS

BEACH SIDE DAY USE RESTROOM

SHEET NO. **A200**

DOOR SCHEDULE

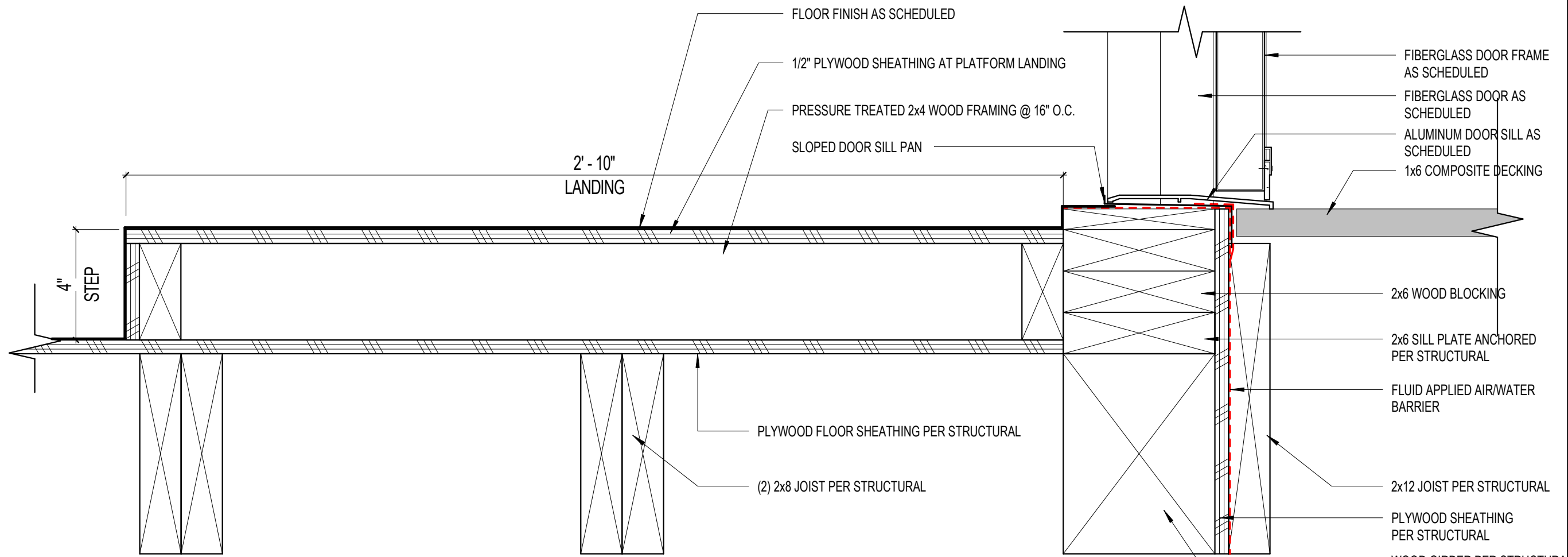
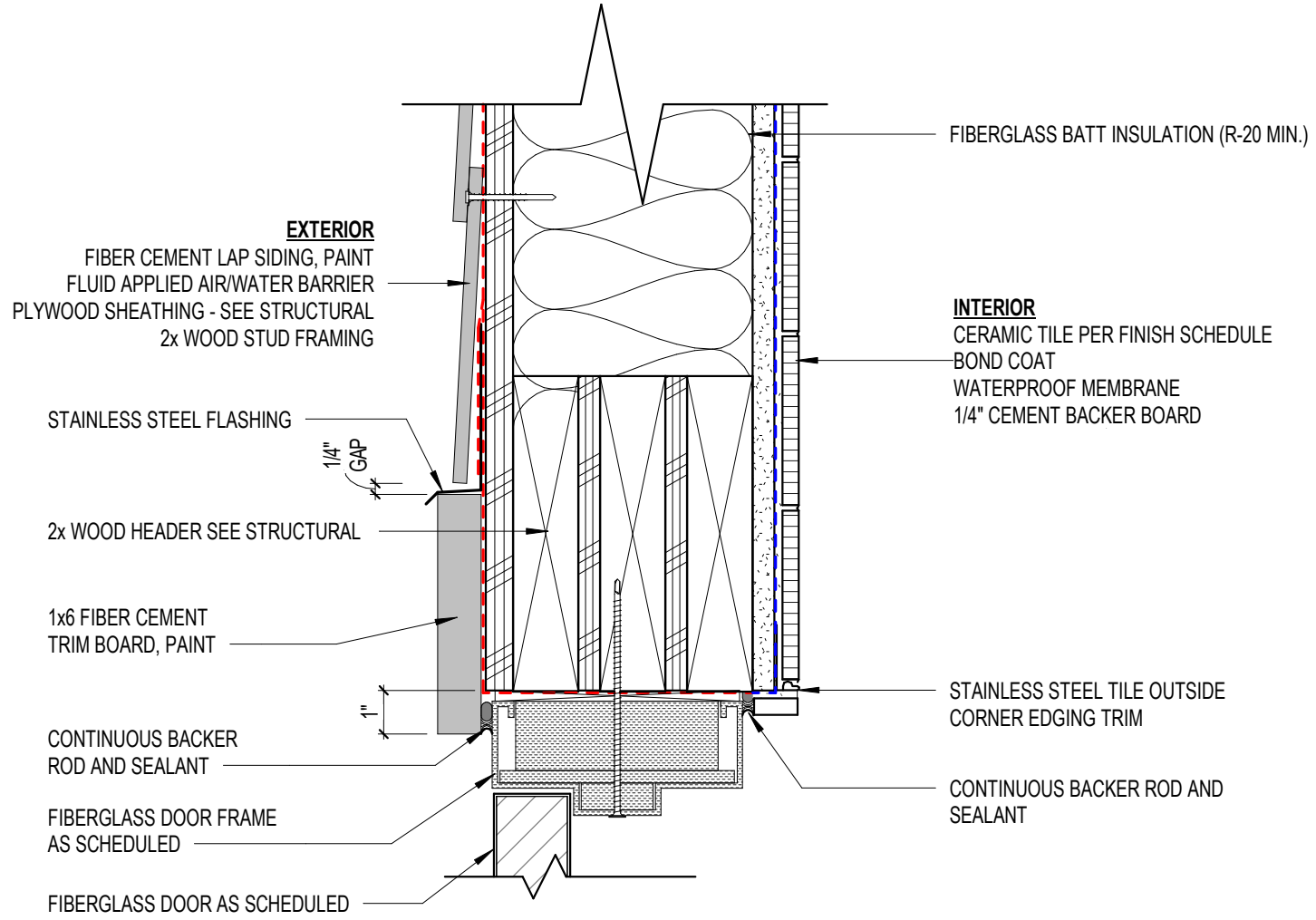
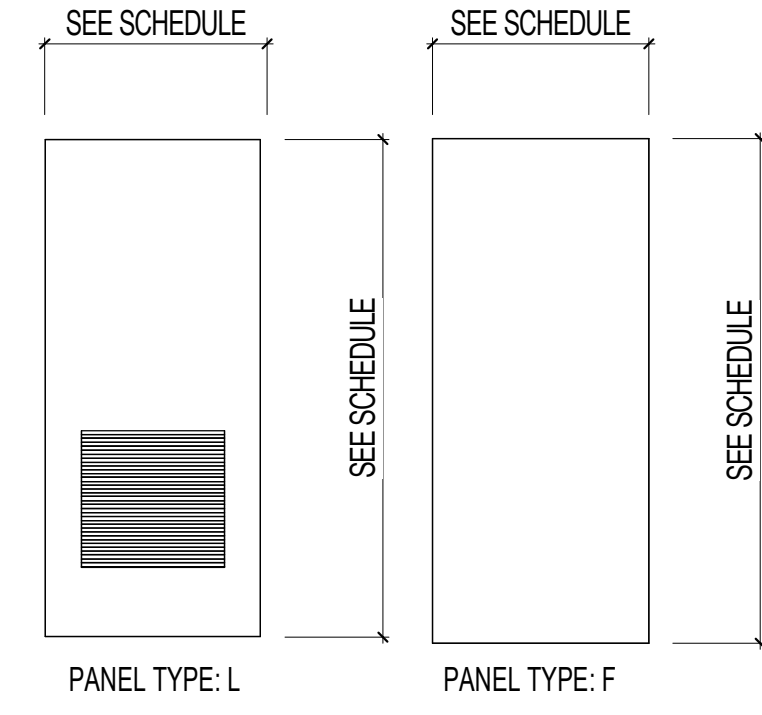
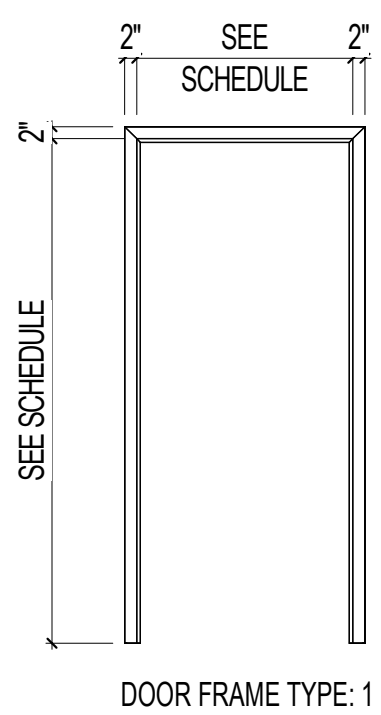
MARK	DOOR FRAME			DOOR PANEL		DETAILS			DOOR HARDWARE SET	COMMENTS	
	HEIGHT	WIDTH	TYPE	TYPE	MATERIAL	HEAD	JAMB	SILL			
101A	7'-0"	3'-0"	1	FG	L	FG	E5/A501	A5/A501	A13/501	1	
102A	7'-0"	3'-0"	1	FG	L	FG	E5/A501	A5/A501	A13/501	1	
103A	7'-0"	3'-0"	1	FG	L	FG	E5/A501	A5/A501	A13/501	1	
104A	7'-0"	3'-0"	1	FG	L	FG	E5/A501	A5/A501	A13/501	1	
105A	7'-0"	3'-0"	1	FG	L	FG	E5/A501	A5/A501	A13/501	1	
106A	7'-0"	3'-0"	1	FG	L	FG	E5/A501	A5/A501	A13/501	1	
107A	7'-0"	3'-0"	1	FG	L	FG	E5/A501	A5/A501	A13/501	1	
108A	7'-0"	3'-0"	1	FG	L	FG	E5/A501	A5/A501	A13/501	1	
109A	7'-0"	3'-0"	3	FG	F	FG	E5/A501	A5/A501	E9/A501	2	

DOOR & HARDWARE GENERAL NOTES

- DOOR NUMBERING MUST BE FOLLOWED EXACTLY PER PLANS. ANY CONFLICTS SHOULD BE BROUGHT TO ARCHITECTS OR TENANT CM'S ATTENTION.
- ALL WOOD BLOCKING REQUIRED AT EXTERIOR WALL/WINDOW DETAILS TO BE PRESSURE TREATED.
- VERIFY ROUGH OPENING SIZES AND REQUIREMENTS WITH DOOR/FRAME MANUFACTURER.
- MAXIMUM PULL FORCES FOR EXTERIOR DOORS TO BE 8.5 LBS.
- PROVIDE RUST INHIBITOR COATING AND STAINLESS STEEL SCREWS/FASTENERS ON ALL HARDWARE ITEMS AT EXTERIOR DOORS PER MANUFACTURER SPECIFICATIONS.
- EXTERIOR DG DOORS TO BE INSULATED WITH A U-VALUE OF 0.50.
- G.C. TO VERIFY ALL HARDWARE FUNCTION, KEYING AND SECURITY REQUIREMENTS WITH OWNER PRIOR TO PURCHASE.
- ALL DOOR HARDWARE SHALL BE FULLY ACCESSIBLE PER THE PROVISIONS OF FBC-A SECTION 404.
- ALL DOORS TO BE READILY OPERABLE IN THE DIRECTION OF EGRESS TRAVEL WITHOUT THE USE OF A KEY OR SPECIAL EFFORT.
- DOORS OPENING INTO SEMI-HEATED SPACE, UNCONDITIONED SPACE, OR TO THE EXTERIOR SHALL COMPLY WITH LOCAL ENERGY CODES.

DOOR & WINDOW ABBREVIATIONS

- FG: FIBERGLASS - PRE-FINISHED



E1	DOOR FRAME TYPES	E4	DOOR PANEL TYPES	E5	FIBERGLASS DOOR HEAD DETAIL	E9	DOOR TRESHOLD AT
3/8" = 1'-0"		3/8" = 1'-0"		3" = 1'-0"		3" = 1'-0"	

HARDWARE SET 1 - RESTROOM

1 SET	HINGES	STANLEY	FBB168 4.5x4.5	US32D	
1	LOCKSET	YALE	AU 5422 LN	US32D	CORRIDOR, DORMITORY
1	CLOSER	NORTON	8301 BF	US32D	
1	THRESHOLD	NATIONAL GUARD	898V-36	MILL	ADA COMPLIANT
1	KICKPLATE	BATTALION	5U656 8"x34"	.04 S.S.	LOCATE ON BOTH SIDES
1	DOOR SWEEP	PEMCO	321SSN	SS	
3	SILENCERS	ROCKWOOD	608		
1	DOOR SEAL	PEMCO	PK33BL		

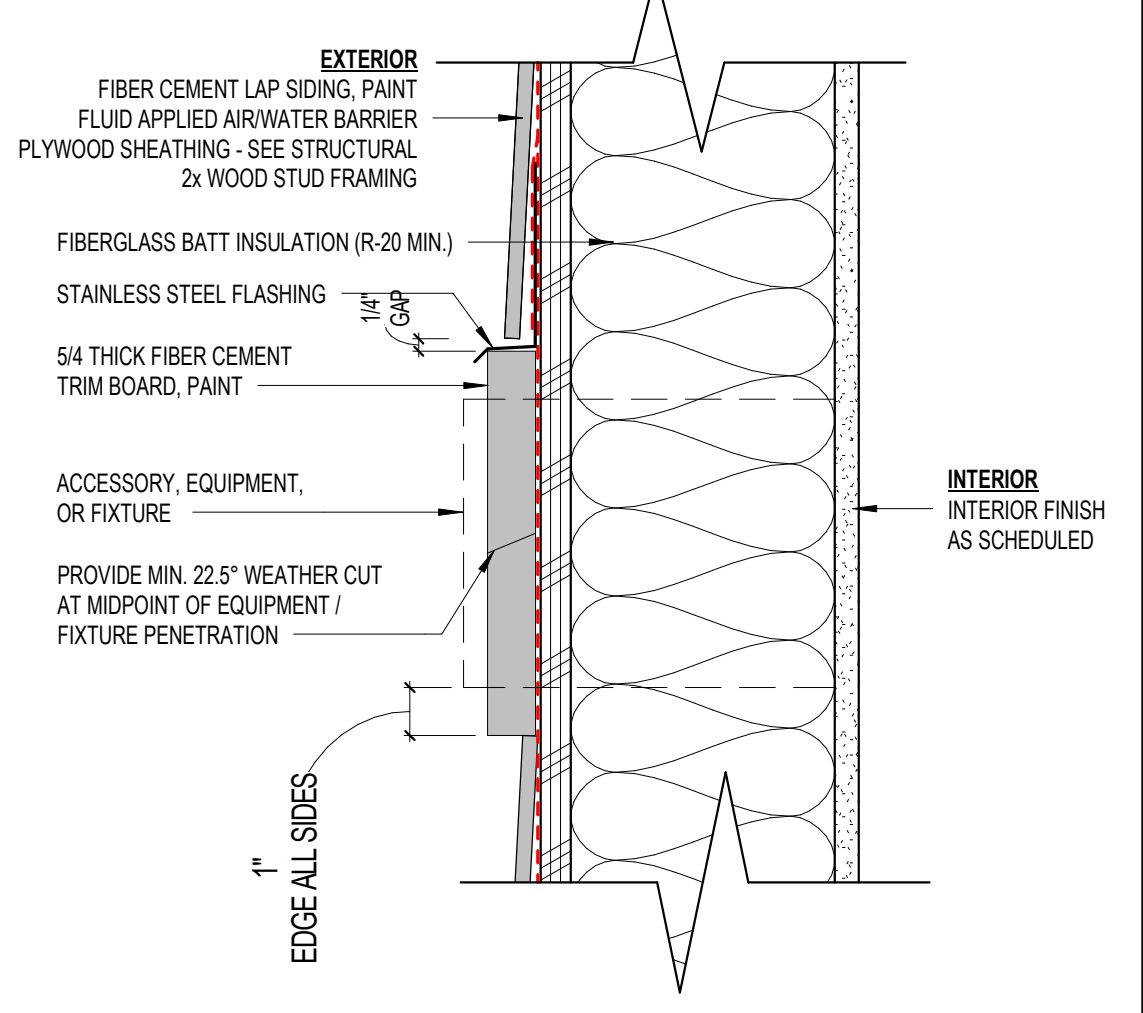
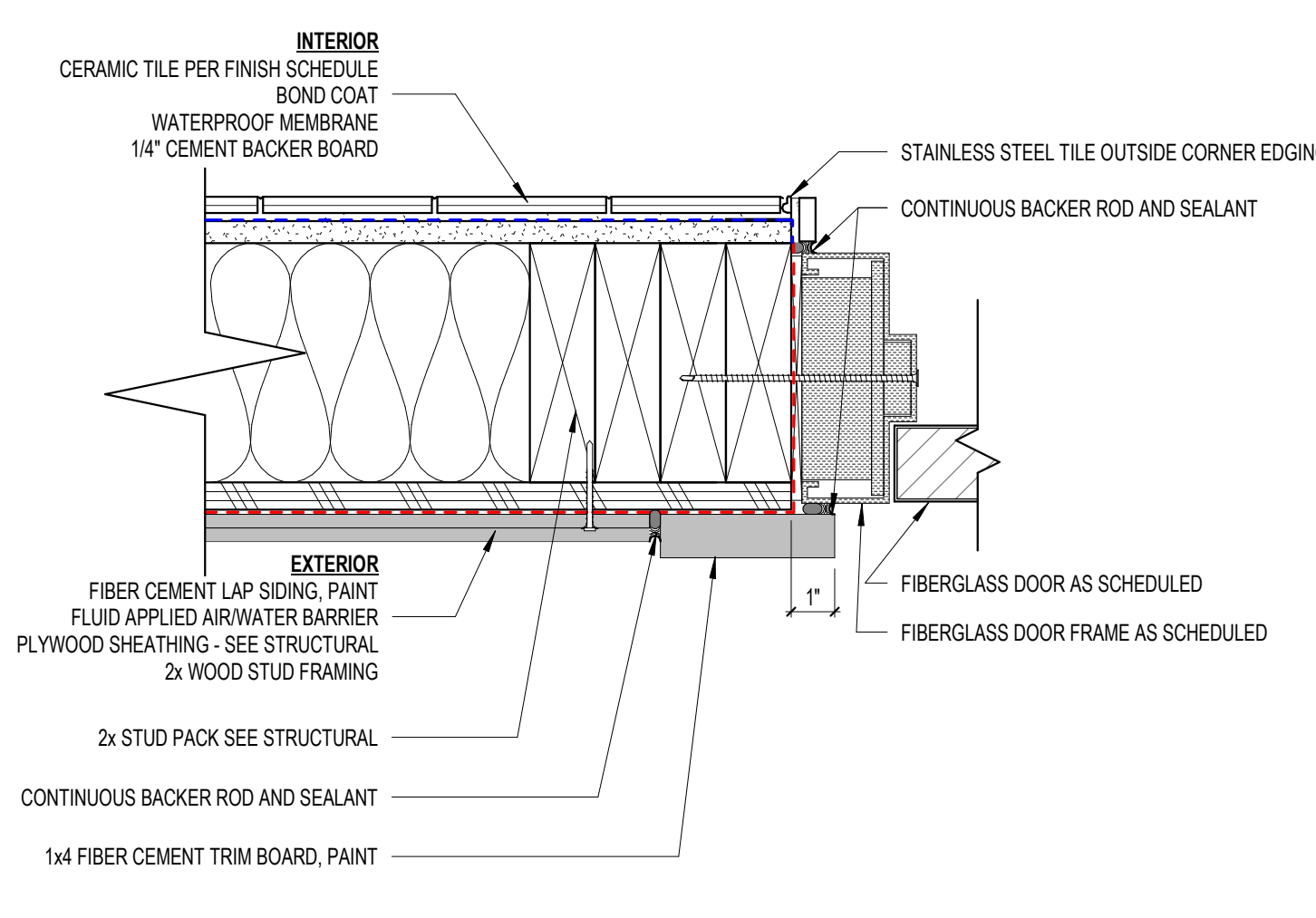
HARDWARE SET 2 - CHASE / STORAGE

1 SET	HINGES	STANLEY	FBB168 4.5x4.5	US32D	
1	LOCKSET	YALE	PB 5405 LN	US32D	STOREROOM/CLOSET
1	HOLD	BATTALION	5U618		
1	THRESHOLD	NATIONAL GUARD	898V-36	MILL	ADA COMPLIANT
1	DOOR SWEEP	PEMCO	321SSN	SS	
3	SILENCERS	ROCKWOOD	608		
1	DOOR SEAL	PEMCO	PK33BL		

HARDWARE SETS ARE ALL ON DOORS THAT REQUIRE A FLORIDA APPROVAL NUMBER. CONFIRM W/ MANUFACTURER OF THE DOORS THAT THE HARDWARE LISTED WILL MEET OR EXCEED THE TESTED HARDWARE. WHERE TESTED HARDWARE IS REQUIRED TO MAINTAIN THE FLORIDA APPROVAL RATING.

ALL DOORS SHALL BE FULLY ADA COMPLIANT

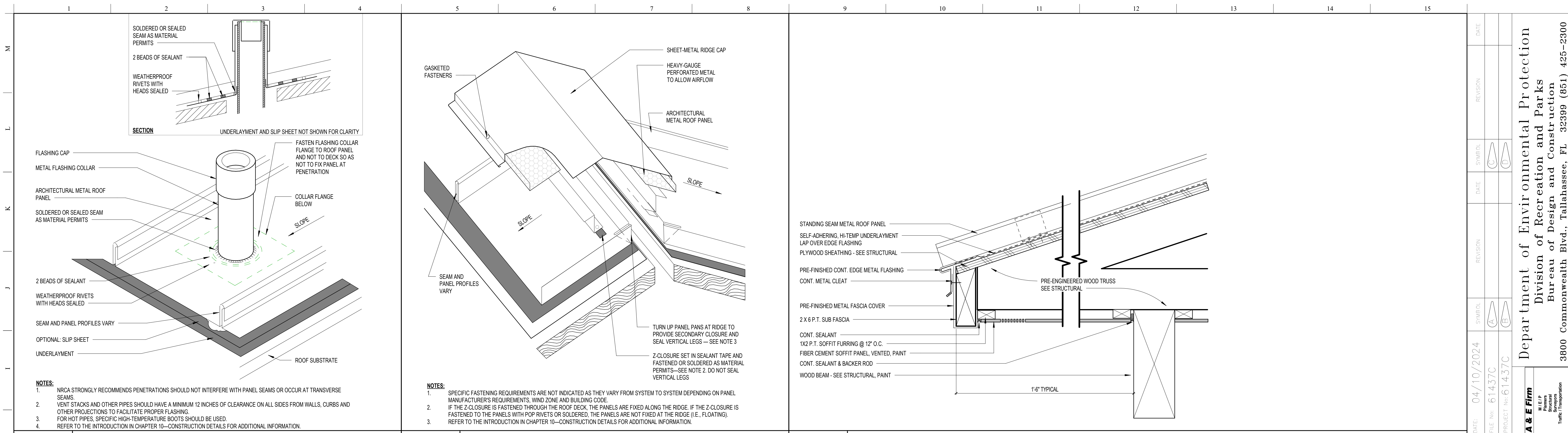
ALL DOOR HARDWARE SHALL BY TYPE 316 STAINLESS STEEL WHERE AVAILABLE AS FIRST OPTION AND TYPE 304 STAINLESS STEEL IF NOT AVAILABLE IN 316 SS.



A1	DOOR HARDWARE SCHEDULE	A5	FIBERGLASS DOOR JAMB	A13	EXT SURFACE MOUNT FIXT., EQUIP., OR ACC. DETAIL
12" = 1'-0"		3" = 1'-0"		3" = 1'-0"	

DATE: 04/10/2024
 REVISION: 61437C
 SW/ED: A, E
 DATE: 04/10/2024
 REVISION: 61437C
 SW/ED: A, E
 ISSUE DATE: 04/10/2024
 COMP FILE NO: 61437C
 START PROJECT NO: 61437C
 DESIGNER: CPH
 DRAWN BY: CPH
 REVIEWED BY: BKS
 PROFESSIONAL REGISTRATION: CPH CONSULTING, LLC - #092946
 LICENSE NUMBER: #092946
William J. "Rish" Park
 DOOR & FRAME TYPES
 BEACH SIDE DAY USE RESTROOM
A501
 SHEET NO.
 A Full Service A & E Firm
 Environmental
 Engineering
 Professional
 Traffic Transportation
 Landscape Architects
 www.cphncorp.com

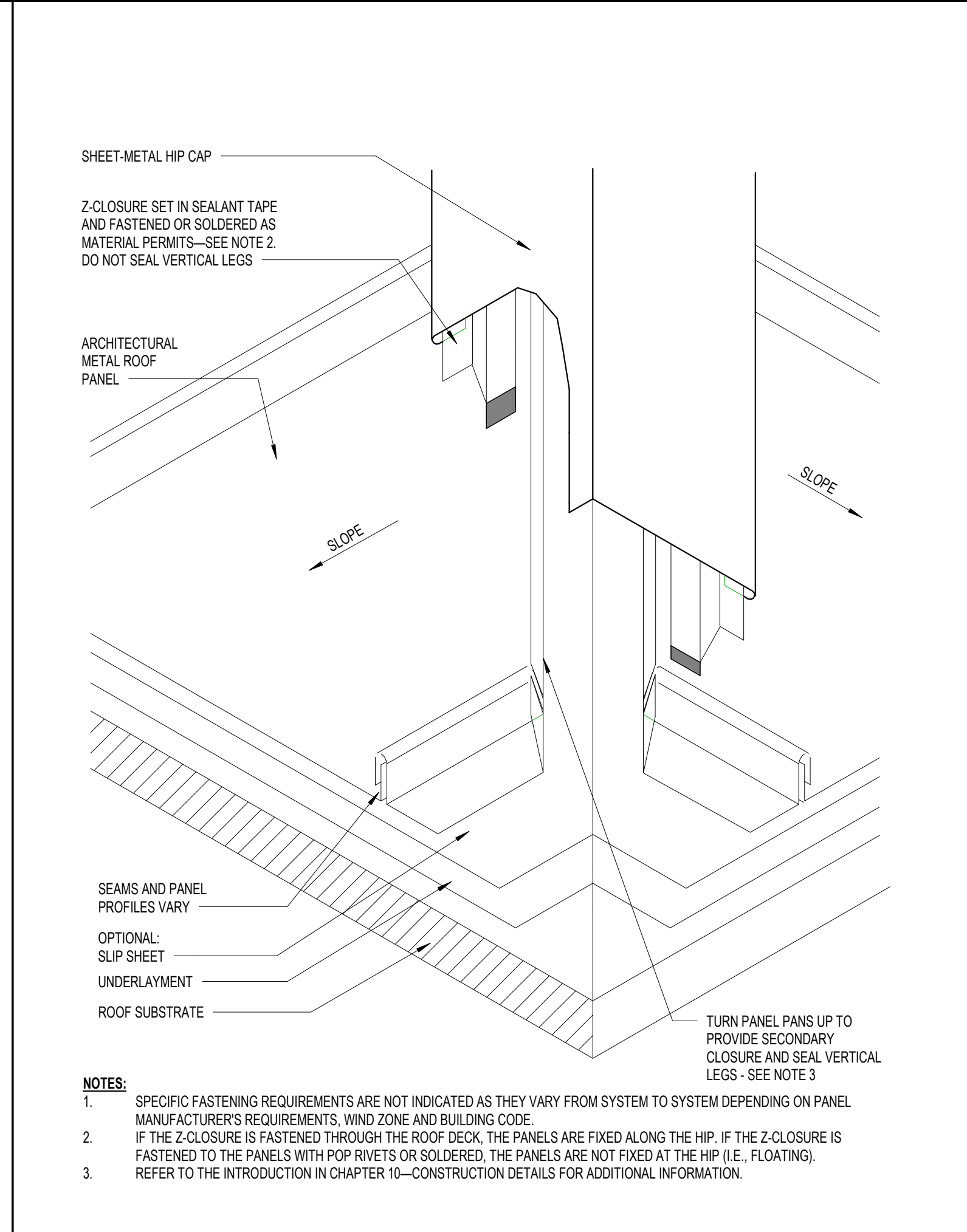
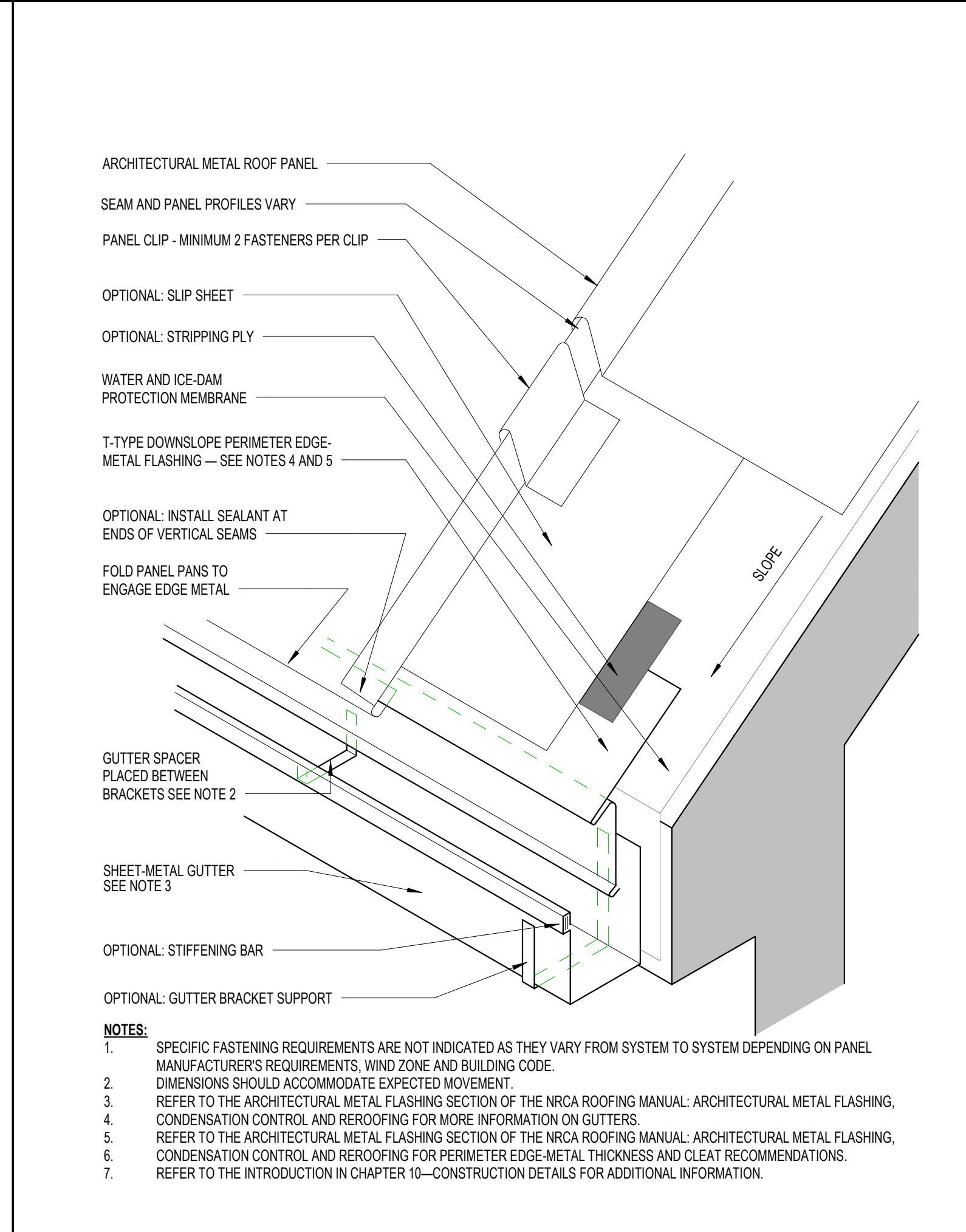
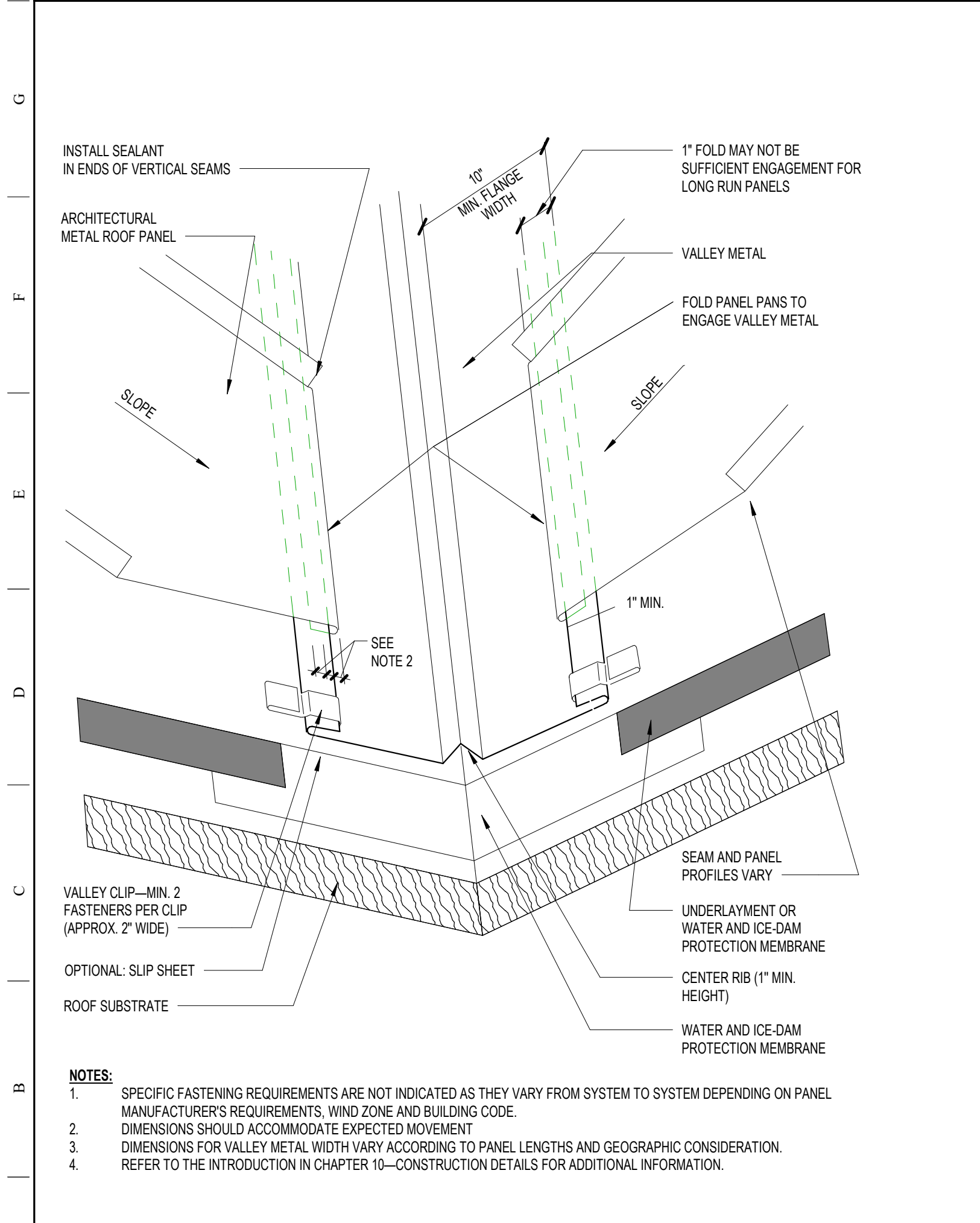
Department of Environmental Protection
 Division of Recreation and Parks
 Bureau of Design and Construction
 3800 Commonwealth Blvd., Tallahassee, FL 32399 (851) 425-2300



H1 PIPE PENETRATION FLASHING DETAIL
12" = 1'-0"

H5 VENTING RIDGE CAP FLASHING DETAIL
12" = 1'-0"

H9 EAVE DETAIL
3" = 1'-0"



A1 OPEN METAL VALLEY DETAIL
12" = 1'-0"

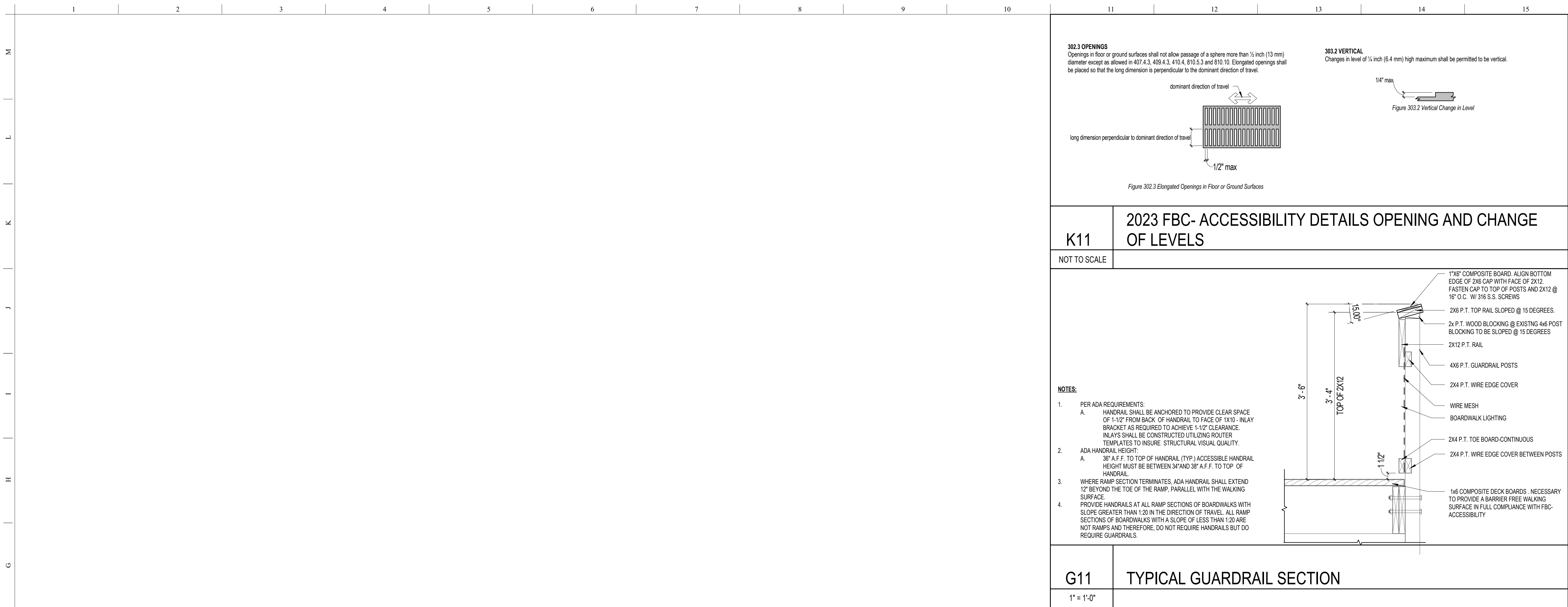
A5 EAVE WITH GUTTER DETAIL
12" = 1'-0"

A9 HIP CAP FLASHING DETAIL
12" = 1'-0"

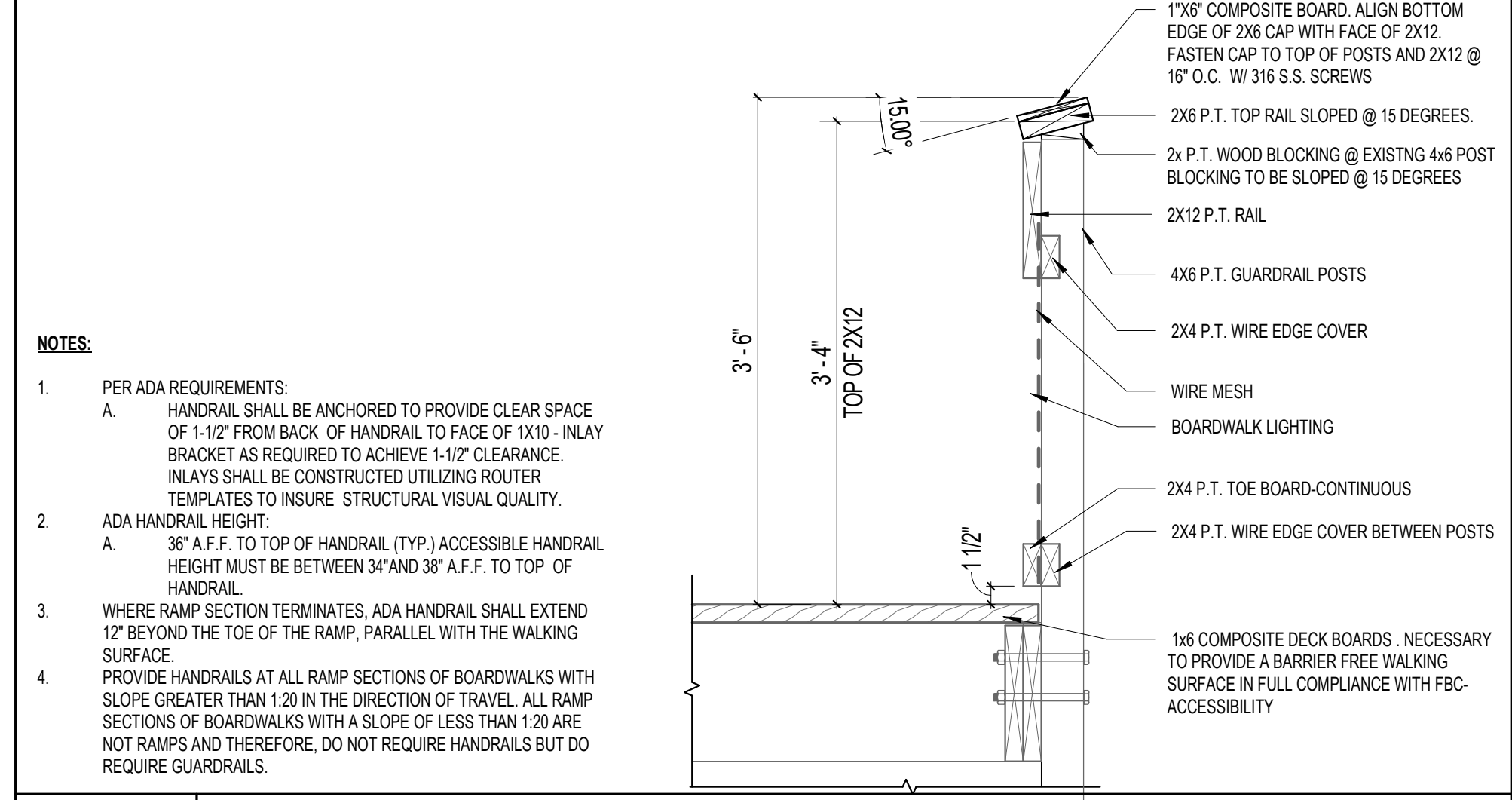
DATE	REVISION	SYMBOL	DATE	REVISION	SYMBOL
04/10/2024		A			
ISSUE DATE	COMP FILE NO	START PROJECT NO	DESIGNER	CPH	CPH
04/10/2024	61437C	61437C	DRAWN BY	BKS	BKS
			REVIEWED BY		
			CONSULTANT		
<p>Professional Registration CPH CONSULTING, LLC LICENSE NUMBER - 4982946</p>					
<p>Product Title WILLIAM J. "RISH" PARK DETAILS - EXTERIOR</p>					
<p>Project Title BEACH SIDE DAY USE RESTROOM</p>					
<p>Sheet No. A521</p>					

Department of Environmental Protection
Division of Recreation and Parks
Bureau of Design and Construction
3800 Commonwealth Blvd., Tallahassee, FL 32399 (851) 425-2300

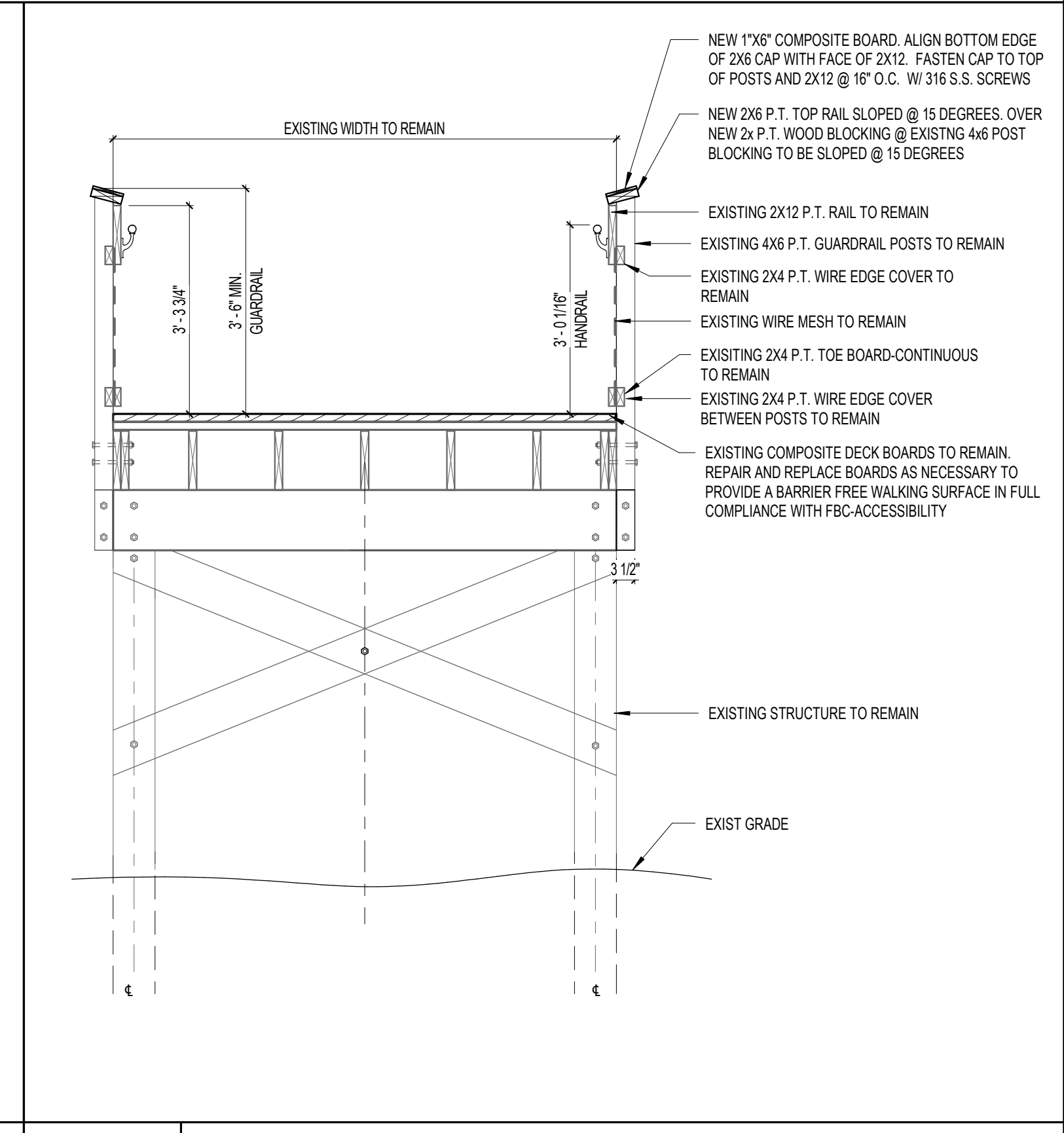
A Full Service A & E Firm
Architectural
Civil
Electrical
Environmental
Mechanical
Structural
Traffic/Transportation
Landscape Architects
www.cphncpa.com



K11
2023 FBC- ACCESSIBILITY DETAILS OPENING AND CHANGE OF LEVELS
NOT TO SCALE



G11
TYPICAL GUARDRAIL SECTION
1" = 1'-0"



A12
SECTION THRU BOARDWALK
1/2" = 1'-0"

DATE	REVISION	SYMBOL	DATE	REVISION	SYMBOL
ISSUE DATE: 04/10/2024	COMP FILE NO: 61437C	START PROJECT NO: 61437C	DESIGNER: CPH	DRAWN BY: CPH	REVIEWED BY: BKS
<p>A Full Service A & E Firm Landscape Architects Environmental Engineers Professional Engineers Surveyors Traffic Transportation Consultants</p> <p>CPH www.cphcorp.com</p>					
<p>WILLIAM J. "RISH" PARK DETAILS - RAILING</p>					
<p>PROJECT TITLE: BEACH SIDE DAY USE RESTROOM</p>					
<p>SHEET NO. A590</p>					