

SHEET INDEX

P0.01 NOTES & DETAILS
 P1.01 DOMESTIC WATER PLANS & SCHEDULES
 P1.02 SANITARY PLANS & SCHEDULES

DESIGN CONDITIONS

OUTDOOR: SUMMER: 95F; WINTER: 27.0F (DB)
 INDOOR: SUMMER: 75F; WINTER: 70F DB
 SUPPLY PRESSURE: 30PSI

ABBREVIATIONS

AD ACCESS DOOR
 AFF ABOVE FINISHED FLOOR
 AP ACCESS PANEL
 ASTM AMERICAN SOCIETY FOR TESTING AND MATERIALS
 BOP BOTTOM OF PIPE
 CD CONDENSATE DRAIN
 CFM CUBIT FEET PER MINUTE
 CO CLEAN-OUT
 CT COOLING TOWER
 DN DOWN
 ENR ENGINEER OF RECORD
 EWT ENTERING WATER TEMPERATURE
 EXT EXISTING
 FBC FLORIDA BUILDING CODE
 FD FLOOR DRAIN
 FF FINAL FILTERS
 FMC FLORIDA MECHANICAL CODE
 FPC FLORIDA PLUMBING CODE
 FPM FEET PER MINUTE
 GC GENERAL CONTRACTOR
 GPM GALLONS PER MINUTE
 ID INSIDE DIAMETER
 IN INCHES
 JHA JURISDICTION HAVING AUTHORITY
 LBS POUNDS
 LWT LEAVING WATER TEMPERATURE
 MAX MAXIMUM
 MIN MINIMUM
 NC NORMALLY CLOSED
 NEC NATIONAL ELECTRICAL CODE
 NFPA NATIONAL FIRE PROTECTION ASSOCIATION
 NO NORMALLY OPEN
 NTS NOT TO SCALE
 OD OUTSIDE DIAMETER
 POC POINT OF CONTACT
 PPM PARTS PER MILLION
 PRS PRESSURE REDUCING STATION
 PRV PRESSURE REDUCING VALVE
 PSI POUNDS PER SQUARE INCH
 PSIA POUNDS PER SQUARE INCH ABSOLUTE
 PSIG POUNDS PER SQUARE INCH GAGUE
 PVC POLYVINYL CHLORIDE PIPE
 RD ROOF DRAIN
 RHC REHEAT COIL
 RPM REVOLUTIONS PER MINUTE
 RV RELIEF VALVE
 SAN SANITARY
 SF SQUARE FEET
 SMACNA SHEET METAL AIR CONDITIONING CONTRACTORS NATIONAL ASSOCIATION
 UL UNDERWRITERS LABORATORIES
 UNO UNLESS NOTED OTHERWISE
 VTR VENT THROUGH ROOF

PIPING SYMBOLS

— SERVICE S — PIPING SERVICE SUPPLY
 — SERVICE R — PIPING SERVICE RETURN
 — SERVICE (E) — EXISTING PIPING SERVICE
 — V — VENT
 — X X — SERVICE — X X — PIPE TO BE REMOVED
 — BBD — BOILER BLOW DOWN
 — BFW — BOILER FEED WATER
 — PC — PUMPED CONDENSATE DISCHARGE
 — VPD — VACUUM PUMP DISCHARGE
 — FOS — FUEL OIL SUPPLY
 — FOD — FUEL OIL DISCHARGE
 — FOR — FUEL OIL RETURN
 — FOV — FUEL OIL VENT LINE
 — FOF — FUEL OIL FILL
 — FOG — FUEL OIL GAGE LINE
 — A — COMPRESSED AIR
 — LPS — LOW PRESSURE STEAM
 — MPS — MEDIUM PRESSURE STEAM
 — HPS — HIGH PRESSURE STEAM
 — VAC — VACUUM SERVICE
 — RS — REFRIGERANT COMP SUCTION (COLD GAS)
 — RL — REFRIGERANT LIQUID LINE
 — RHG — REFRIGERANT HOT GAS LINE
 — RLR — REFRIGERANT LIQUID/GAS RECIRCULATION LINE
 — CWS — CONDENSER WATER SUPPLY
 — CWR — CONDENSER WATER RETURN
 — CHWS — CHILLED WATER SUPPLY
 — CHWR — CHILLED WATER RETURN
 — CD — CONDENSATE DRAIN LINE (HVAC)
 — HPWS — HEAT PUMP WATER SUPPLY
 — HPWR — HEAT PUMP WATER RETURN
 — NPW — NON-POTABLE WATER
 — SS — SANITARY SOIL PIPING
 — CW — COLD WATER (POTABLE DOMESTIC)
 — HWS — HOT WATER (POTABLE DOMESTIC) SUPPLY
 — HWR — HOT WATER (POTABLE DOMESTIC) RETURN
 — G — NATURAL GAS SERVICE
 — LOCK — LOCKSHIELD MANUAL VALVE ACTUATOR
 — LEVER — LEVER MANUAL VALVE
 — M — MOTORIZED VALVE
 — THREE — THREE-WAY VALVE
 — BALL — BALL VALVE
 — CHECK — CHECK VALVE
 — LATERAL — LATERAL
 — TEE — TEE
 — TEE UP — TEE UP
 — TEE DOWN — TEE DOWN
 — CROSS — CROSS
 — ELBOW — ELBOW WITH RADIUS
 — 90 — 90 DEGREE ELBOW
 — 45 — 45 DEGREE ELBOW
 — ELBOW UP — ELBOW FACING UP
 — ELBOW DOWN — ELBOW FACING DOWN
 — BASE — BASE SUPPORTED ELBOW
 — PIPE — PIPE CAP
 — SPRING — SPRING HANGER
 — THERM — THERMOMETER WELL
 — THERM IN — THERMOMETER IN WELL

PIPING SYMBOLS (CONT'D)

— TEMPERATURE AND PRESSURE TAP
 — Y-TYPE STRAINER
 — PIPING FLEXIBLE CONNECTION
 — ORIFICE FLANGE WITH DESCRIPTION "N"
 — VENTURI FLOW MEASURING DEVICE
 — PITOT DEVICE
 — FLOOR DRAIN
 — SHUTOFF COCK
 — PRESSURE GAGE, WITH SHUTOFF COCK
 — PRESS GAGE, WITH SNUBBER AND S.O. COCK
 — AUTOMATIC AIR VENT
 — AIR SEPARATOR
 — HOSE BIB
 — C — DOMESTIC COLD WATER
 — HW — DOMESTIC HOT WATER

PLUMBING SPECIFICATIONS

THE GENERAL SPECIFICATIONS APPLY TO THE WORK DESCRIBED IN THIS SECTION. ALL LABOR, MATERIALS, SERVICES, EQUIPMENT, AND APPLIANCES FOR FABRICATION, INSTALLATION, AND/OR RENOVATION OF PLUMBING AND OTHER MISCELLANEOUS SYSTEMS AS INDICATED IN THE DESIGN DRAWINGS AND AS OUTLINED IN THESE DRAWINGS SHALL BE PROVIDED BY THE CONTRACTOR.

1. ABBREVIATIONS AND SYMBOLS

NOT ALL SYMBOLS AND ABBREVIATIONS WILL APPEAR ON THE PROJECT DRAWINGS.

2. APPLICABLE CODES AND STANDARDS

- * 2023 FBC
- * 2023 FPC
- * 2023 FEC
- * 2023 FRC
- * NFPE - LATEST EDITION
- * SMACNA - LATEST EDITION
- * NEC - LATEST EDITION

IN ADDITION TO THE ABOVE-MENTIONED CODES AND STANDARDS, THE CONTRACTOR SHALL OBTAIN AND PAY ALL FEES FOR ALL REQUIRED PERMITS AND INSPECTIONS PRESCRIBED BY THE JHA.

3. CONTRACTOR REQUIREMENTS

THE CONTRACTOR SHALL FURNISH AND INSTALL COMPLETE PLUMBING AS INDICATED IN THE DESIGN DRAWINGS AND AS OUTLINED WITHIN THE SPECIFICATIONS. WORK SHALL INCLUDE, BUT NOT BE LIMITED TO THE FABRICATION AND/OR INSTALLATION OF THE SCHEDULED PLUMBING UNITS, PUMPS, AND PIPING DISTRIBUTION SYSTEMS. THE CONTRACTOR SHALL CLEAN, REPAIR, ADJUST, CHECK, AND PLACE IN SERVICE THE VARIOUS SYSTEMS DESCRIBED HEREIN. THE CONTRACTOR SHALL FURNISH ALL LABOR, MATERIALS, EQUIPMENT AND TOOLS REQUIRED TO PERFORM TESTS REQUIRED BY THE JHA AND THESE DRAWINGS. ALL ACTIONS REQUIRED BY THIS PARAGRAPH SHALL BE INCLUDED IN THE CONTRACTOR'S FEE. THE CONTRACTOR IS RESPONSIBLE FOR COORDINATING WITH OTHER TRADES AND FOR PERFORMING ALL NECESSARY FIELD MEASUREMENTS REQUIRED TO PROVIDE A FUNCTIONAL INSTALLATION APPROVED BY THE JHA.

4. EXECUTION

NO WORK SHALL BE COVERED OR CONCEALED UNTIL INSPECTED AND APPROVED BY THE JHA. ALL LOCATIONS OF EQUIPMENT, PIPING, ETC. INDICATED WITHIN THESE DRAWINGS IS DIAGRAMMATIC. AS SUCH THE DRAWINGS SHOULD BE FOLLOWED AS CLOSELY AS POSSIBLE. HOWEVER, THE CONTRACTOR SHALL MAKE CHANGES REQUIRED TO ACCOMMODATE THE BUILDING STRUCTURE, AND INTERFERENCES WITH OTHER TRADES. NOT ALL COMPONENTS REQUIRED FOR A COMPLETE INSTALLATION ARE SHOWN IN THESE DRAWINGS. REFER TO EQUIPMENT SCHEDULES, MANUFACTURER'S INSTALLATION INSTRUCTIONS AND APPLICABLE CODES FOR ADDITIONAL INFORMATION, INCLUDING REQUIRED CLEARANCES, CONNECTION LOCATIONS, EQUIPMENT TYPES AND SIZES.

5. INSULATION

THE CONTRACTOR SHALL BE RESPONSIBLE FOR FURNISHING AND INSTALLING ADEQUATE AND PROPER INSULATION AND MOISTURE-SEAL IN A MANNER THAT WILL PERMANENTLY PREVENT THE ACCUMULATION OF ANY OBJECTIONABLE MOISTURE ON THE EXTERIOR OF SERVICE PIPING, REFRIGERANT PIPING, CONDENSATE DRAIN PIPING, OR OTHER PARTS OF THE SYSTEM. THE CONTRACTOR SHALL CORRECT THE CAUSE OF ANY CONDENSATION AND REPLACE OR REPAIR ANY ASSOCIATED DAMAGES CAUSED BY CONDENSATION TO MATERIALS, EQUIPMENT, OR FINISHES AT NO COST TO THE OWNER FOR THE FULL PERIOD OF GUARANTEE.

6. HANGERS AND SUPPORTS

THE USE OF BAILING WIRE OR PERFORATED METAL STRAPPING IS NOT ACCEPTABLE FOR USE AS SUPPORTS. PROVIDE ALL NECESSARY HANGER RODS, CLAMPS, AND ATTACHMENTS TO PROPERLY SECURE, PIPING, AND EQUIPMENT TO THE BUILDING STRUCTURE. PROVIDE ANY ANGLE IRON OR UNISTRUT AND SUSPENSION RODS REQUIRED TO INSTALL EQUIPMENT PIPING. ALL SUPPORTS EXPOSED TO THE OUTSIDE ENVIRONMENTS SHALL BE CLEANED, PRIMED, AND PAINTED TO PREVENT RUSTING. THE FINISH COLOR SHALL BE SELECTED BY THE OWNER.

7. SUBSTITUTIONS

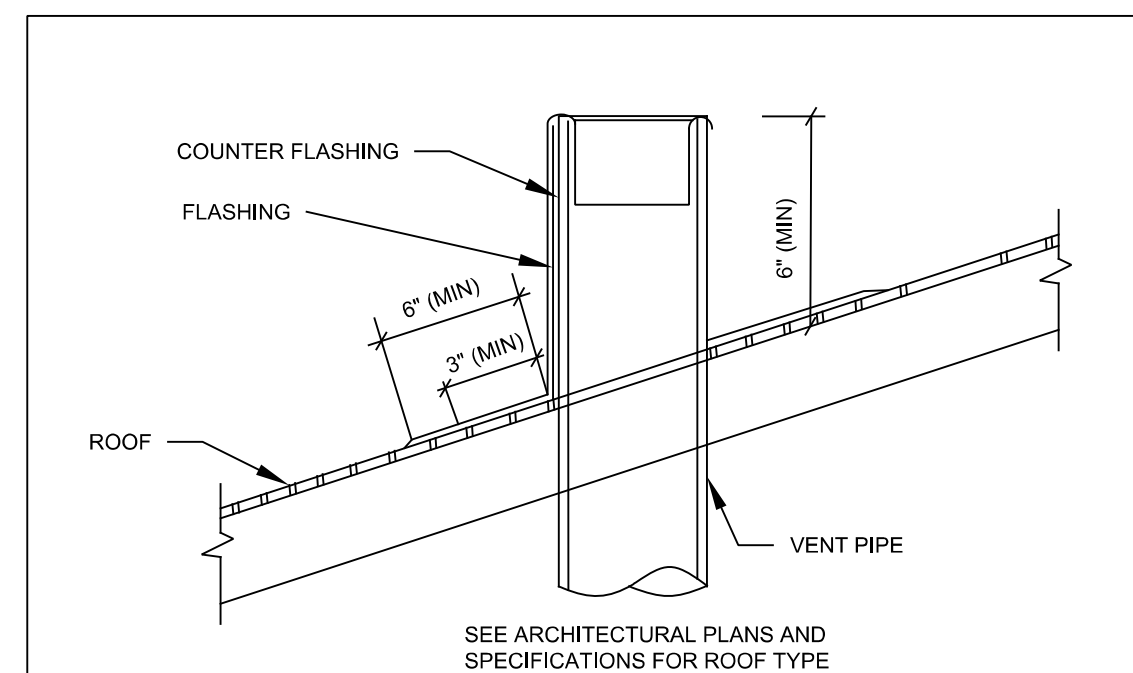
THE EQUIPMENT AND DESIGN OF SYSTEMS INDICATED ON THE DRAWING, AND WITHIN THESE SPECIFICATIONS SHALL BE CONSIDERED AS THE "STANDARD OF QUALITY". ALL EQUIPMENT SHALL BE NEW UNLESS OTHERWISE NOTED. ALL EQUIPMENT SHALL BE FREE OF DEFECTS. DEVIATIONS FROM THE SPECIFIED EQUIPMENT AFFECTING ELECTRICAL REQUIREMENTS SHALL BE COORDINATED WITH THE ELECTRICAL CONTRACTOR, AND THE VENDOR PRIOR TO SUBMITTING BIDS. FAILURE TO DO SO WILL NOT BE CAUSE FOR A CHANGE ORDER AT A LATER DATE. IN ADDITION, THE CONTRACTOR WILL BE HELD RESPONSIBLE FOR ANY AND ALL SUCH CHANGES TO THE ENGINEERING PLANS REQUIRED BY THE JHA TO ACCOMMODATE DEVIATIONS FROM THE EQUIPMENT SPECIFIED.

8. TESTING

THE PLUMBING SYSTEM SHALL BE ADJUSTED SUCH THAT PUMPS, PIPING NETWORKS, ETC. DELIVER NOT LESS THAN THE REQUIRED FLOW QUANTITIES IN EXCESS OF THE SPECIFIED VALUES ARE SUBJECT TO THE APPROVAL OF THE EOR IF FOUND TO HAVE OBJECTIONABLE EFFECTS SUCH AS NOISE.

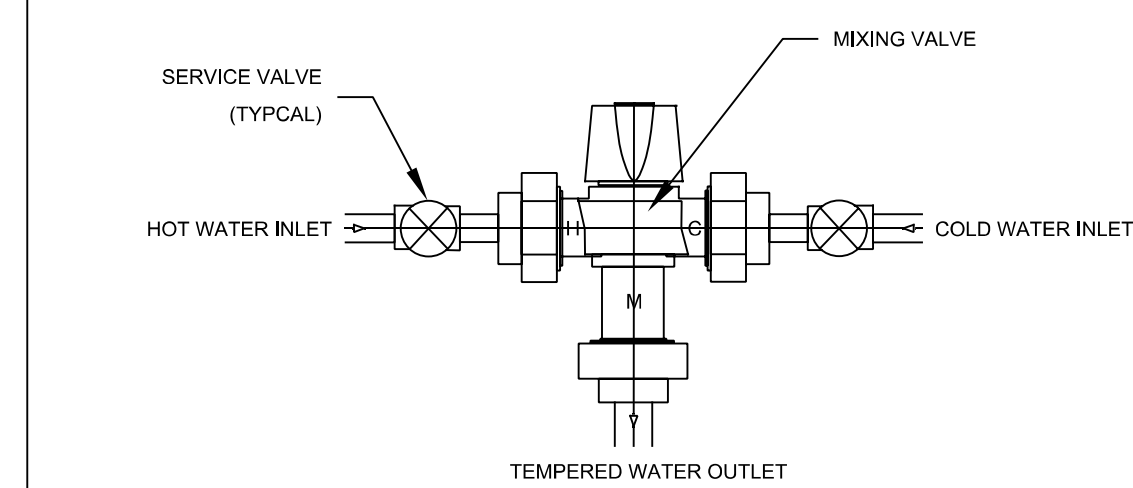
9. WARRANTY AND GUARANTEE

THE CONTRACTOR SHALL WARRANTY/GUARANTEE AND MAINTAIN THE STABILITY OF WORK AND MATERIALS AND KEEP THE SAME IN PERFECT OPERATING CONDITION FOR ONE (1) YEAR. DEFECTS OF ANY KIND DUE TO FAULTY WORKMANSHIP OR MATERIALS APPEARING DURING THE WARRANTY PERIOD MUST BE IMMEDIATELY CORRECTED BY THE CONTRACTOR AT HIS OR HER OWN EXPENSE TO THE SATISFACTION OF THE OWNER, THE ARCHITECT, AND THE EOR. SUCH REPAIRS AND RECONSTRUCTION SHALL INCLUDE ALL DAMAGE TO FINISHES, FURNISHINGS OF THE BUILDING RESULTING FROM THE ORIGINAL DEFECT OR DAMAGES RESULTANT TO THE REQUIRED REPAIRS.



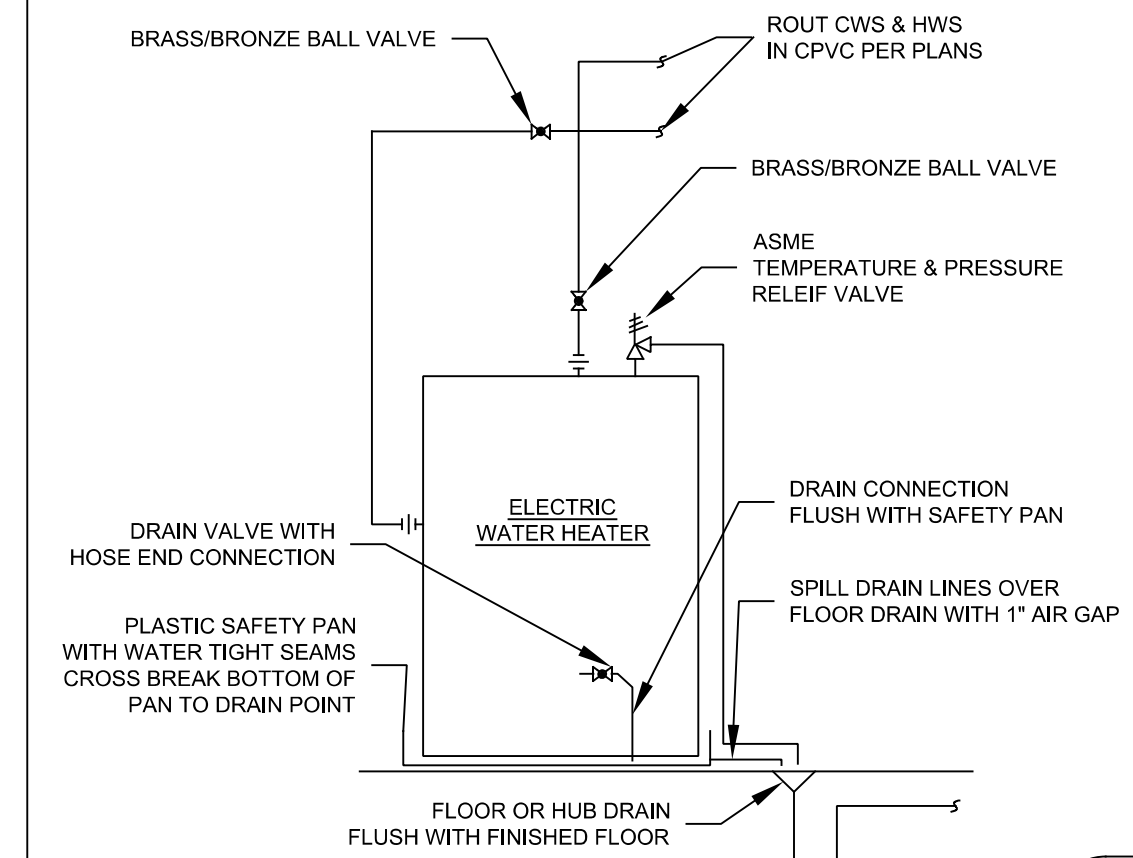
NOTES:
 1. FLASHING AND COUNTERFLASHING FURNISHED BY PLUMBING CONTRACTOR AND INSTALLED BY ROOFING CONTRACTOR
 2. PAINT VENT TO MATCH ROOF

VENT THROUGH ROOF DETAIL
 SCALE: NONE



NOTE: THERMOSTATIC POINT OF USE MIXING VALVE TO BE INSTALLED AT ALL LAVATORIES, SHOWERS, AND SINKS

THERMOSTATIC MIXING VALVE DETAIL
 SCALE: NONE



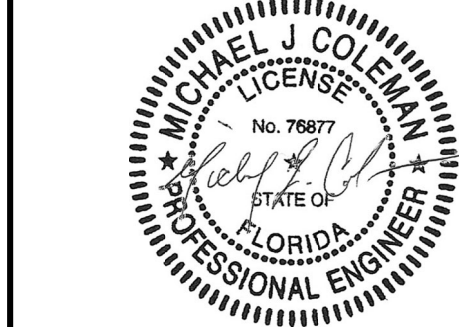
ELECTRIC WATER HEATER DETAIL
 SCALE: NONE

TAG	PLUMBING FIXTURE SCHEDULE		SUGGESTED DEVICE	RUN-OUT SIZES		
	MANUFACTURER	MODEL NUMBER		DESCRIPTION	SANITARY (IN.)	COLD WATER (IN.)
efd-1,2,34	ZURN	FD2200	SMALL AREA FLOOR DRAIN	2	N/A	N/A
fd-1,2,34,5,6,7,8	ZURN	FD2200	SMALL AREA FLOOR DRAIN	2	N/A	N/A
lav-1,2,3,4,5,6,7,8	KOHLER	K-2214	LADENA 21" RECTANGULAR UNDERMOUNT SINK	1-1/2	N/A	N/A
	KOHLER	K-393-N4	CENTERSET BATHROOM SINK FAUCET	N/A	1/2	1/2
lav-9, 10	KOHLER	K-2028-8-0	PINOIR 22" OVAL WALL-MOUNT BATHROOM SINK	1-1/2	N/A	N/A
	KOHLER	K-R76257-4D-BN	WORTH WIDESPREAD BATHROOM SINK FAUCET, 1.2 GPM	N/A	1/2	1/2
sh-1,2,3,6,7,8	MOEN	L23552	CHATEAU CHROME POSI-TEMP(R) SHOWER	N/A	1/2	1/2
sh-4,5	MOEN	26112EPSRN	ENGAGE SIX-FUNCTION 5 1/2" DIAMETER ECO-PERFORMANCE SPRAY HEAD HANDHELD SHOWER	N/A	1/2	1/2
	ZURN	Z1996-24	MOP SERVICE BASIN BUILDING DRAIN	1-1/2	1/2	1/2
ss-1	CENTRAL BRASS	0184-LE0	TWO HANDLE CAST BRASS WALLMOUNT FAUCET	N/A	1/2	1/2
	KOHLER	K-5452-ET-0	DEXTER 0.125 GPF URINAL WITH TOP SPUD IN WHITE	2	N/A	N/A
unl-1	AMERICAN STANDARD	6045013.002	ULTIMA MANUAL Flowise 0.125 GPF EXPOSED URINAL FLUSH VALVE IN POLISHED CHROME FOR 0.75 IN. TOP SPUD	N/A	3/4	N/A
wc-1	KOHLER	K-3493-SS	HIGHLINE CLASSIC 1.6 GPF TWO-PIECE ELONGATED CHAIR HEIGHT TOILET	3	1	N/A

HAMMOND Design GROUP, LLC ARCHITECTS

ARCHITECTURE AA 0003346
 LANDSCAPE ARCHITECTURE LA 0001313

2627 BLAIR STONE ROAD
 TALLAHASSEE, FLORIDA 32301 - 5905
 850-222-2092 PHONE
 www.hdg-architects.com



SIGNATURE & SEAL

THIS ITEM HAS BEEN ELECTRONICALLY SIGNED AND SEALED BY MICHAEL J 1/5/2026 USING SHA AUTHENTICATION. PRINTED COPIES OF THIS DOCUMENT ARE NOT CONSIDERED SIGNED AND SEALED, AND THE SHA CODE MUST BE VERIFIED ON ANY ELECTRONIC COPIES.

WAKULL COUNTY COMMUNITY CENTER GYMNASIUM ADDITION
 CONSTRUCTION DOCUMENTS
 NOTES & DETAILS

REVISIONS

DATE: 1/5/2026
 DRAWN: MJC
 CHECKED: MJC
 JOB NO.: HDGA

CONSULTANTS

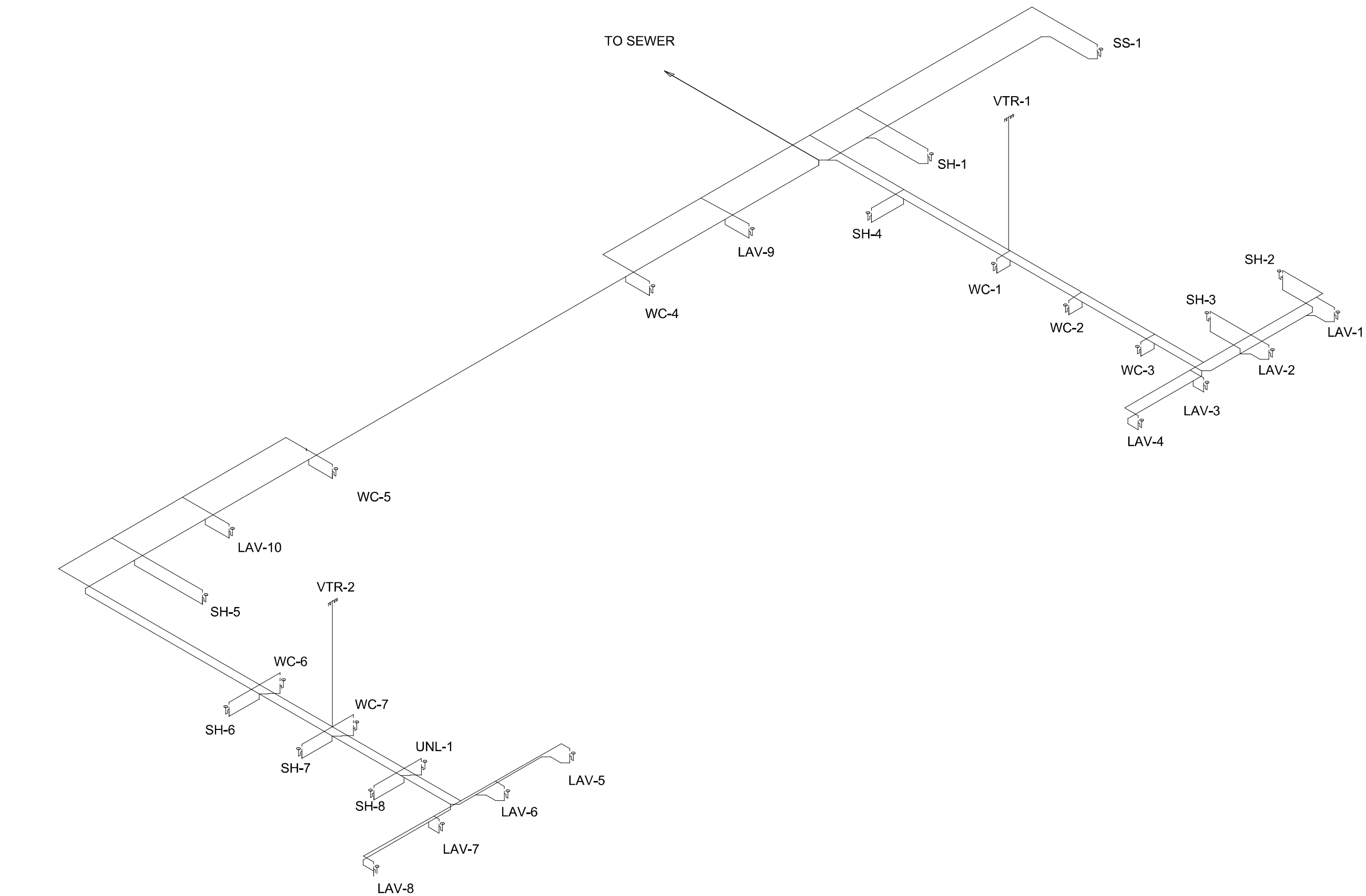
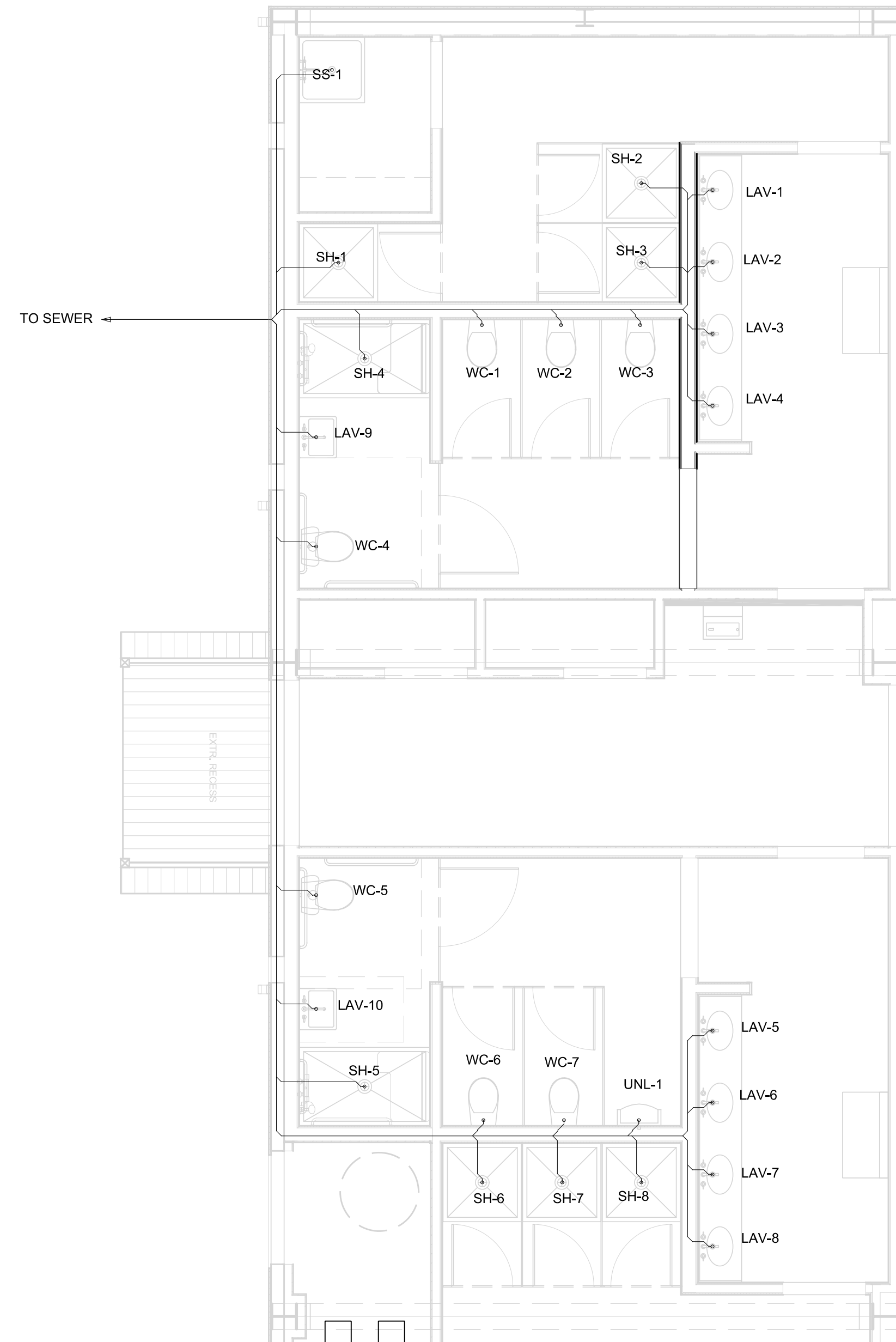


DRAWING

P0.01

REFERENCED NOTES

- ① SANITARY SLOPE 1/4" PER FOOT UNO
- ② ALL VENT PIPING 2.5" UNO



SANITARY PLAN

1/4" = 1'-0"

SANITARY RISER

NTS

TAG	FIXTURE	DRAINAGE WATER FUs		TOTAL DFUs	MINIMUM SIZE OF TRAP (IN)	NOTE
		FIXTURE QUANTITY	DRAINAGE FIXTURE UNIT VALUES			
LAV-1,2,3,4,5,6,7,8,9,10	LAVATORY	10.0	1.0	10.0	1-1/4	
SH-1,2,3,4,5,6,7,8	SHOWERHEAD (5.7GPM OR LESS)	8.0	2.0	16.0	1-1/2	
SS-1	SERVICE SINK	1.0	2.0	2.0	1-1/2	
UNL-1	URINAL (1GPF OR LESS)	1.0	2.0	2.0	SEE NOTE	1
WC-1,2,3,4,5,6,7	WATER CLOSET (FLUSHOMETER TANK)	7.0	4.0	28.0	SEE NOTE	1-2
			TOTAL DFUs:	30		

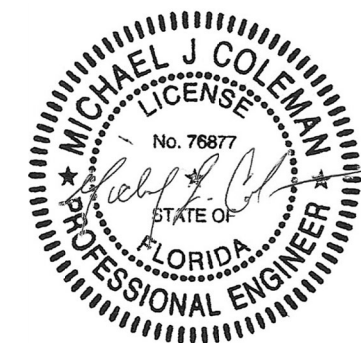
- 1. Trap size shall be consistent with the fixture outlet size
- 2. The minimum size of any building drain serving a water closet shall be 3 inches

HAMMOND
Design
GROUP, LLC

ARCHITECTS

ARCHITECTURE AA 0003346
LANDSCAPE ARCHITECTURE LA 0001313

2627 BLAIR STONE ROAD
TALLAHASSEE, FLORIDA 32301 - 5905
850-222-2092 PHONE
www.hdg-architects.com



SIGNATURE & SEAL
THIS ITEM HAS BEEN ELECTRONICALLY SIGNED AND SEALED BY MICHAEL J 1/5/2026 USING SHA AUTHENTICATION. PRINTED COPIES OF THIS DOCUMENT ARE NOT CONSIDERED SIGNED AND SEALED, AND THE SHA CODE MUST BE VERIFIED ON ANY ELECTRONIC COPIES.

WAKULL COUNTY COMMUNITY CENTER
GYMNASIUM ADDITION
CONSTRUCTION DOCUMENTS
NOTES & DETAILS

REVISIONS

DATE 1/5/2026
DRAWN MJC
CHECKED MJC
JOB NO. HDGA

CONSULTANTS

Emerc Engineering, LLC
P.O. BOX 181444 | TALLAHASSEE, FL 32318
850-264-4940

DRAWING
P1.02