

DEER MOSS CREEK NEW TOWN CENTER

NICEVILLE, FLORIDA



**NOELKER
AND HULL**
ASSOCIATES, INC.
ARCHITECTS

30 WEST KING STREET
CHAMBERSBURG, PA | 17201-1540
P: 717.263.8464 | F: 717.263.6031
NOELKERHULL.COM
PA | MD

BAKER, INGRAM & ASSOCIATES

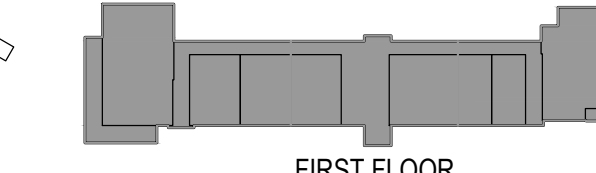
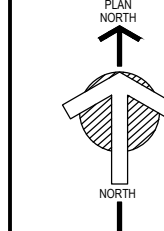
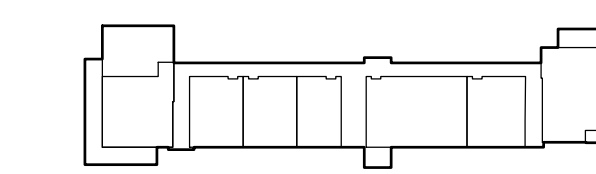
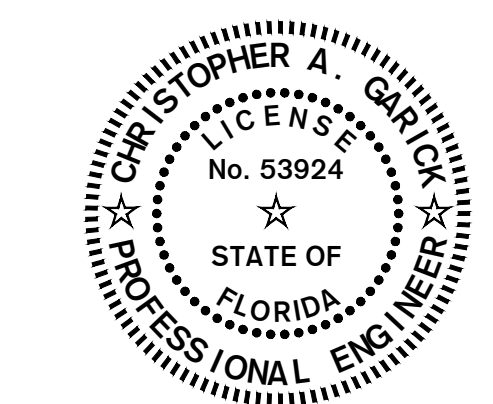
1547 OREGON PIKE
LANCASTER, PA | 17601
P: 717.290.7400 | F: 717.290.7402
MECHICAL & PLUMBING ENGINEER

75 SOUTH F STREET
PENSACOLA, FL | 32502
P: 850.434.0513 | F: 850.434.9674
ELECTRICAL ENGINEER

142 EGLIN PKWY SE
FORT WALTON BEACH, FL | 32548
P: 850.243.6723 | F: 850.644.5420
OWNERS REPRESENTATIVE

320 BAYSHORE DRIVE, SUITE 8
NICEVILLE, FL | 32578
P: 850.279.4298
CIVIL & LANDSCAPE ENGINEER

320 BAYSHORE DRIVE, SUITE 8
NICEVILLE, FL | 32578
P: 850.279.4298



REV. #:	DESCRIPTION:	DATE:
1	ADDENDUM NO.01	31 MAR 2026

BID & PERMIT SET

JOB NUMBER:	25027
ISSUE DATE:	17 MARCH 2026
SCALE:	AS INDICATED
SHEET TITLE:	

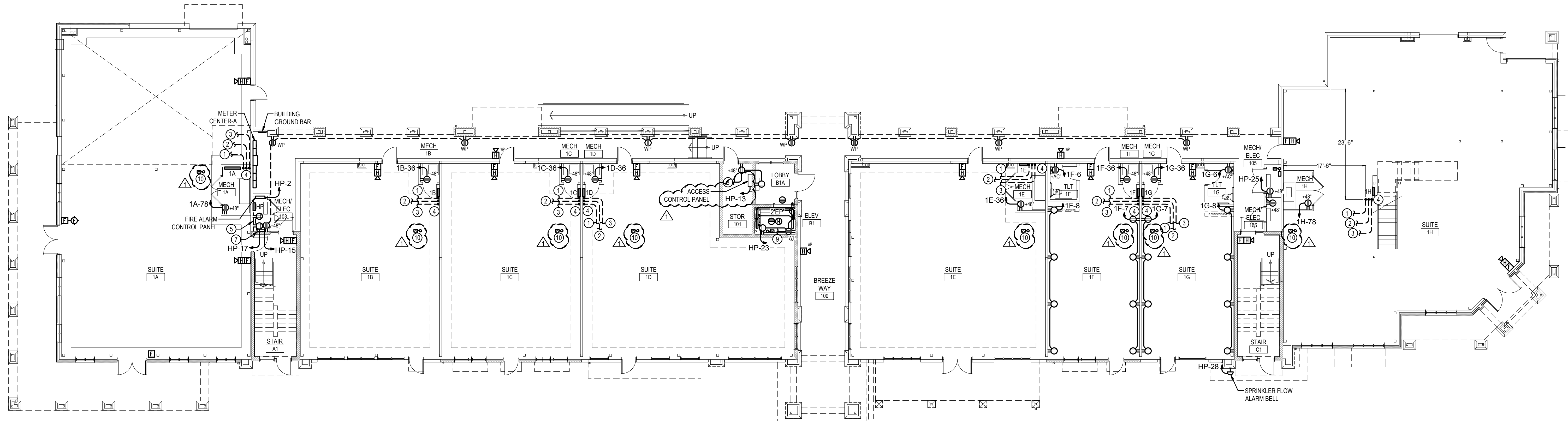
FIRST FLOOR PLAN ELECTRICAL

SHEET NUMBER:

E300

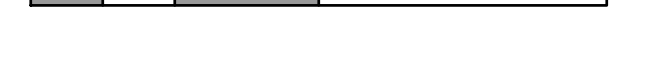
25056
Job No.

- NOTES:**
- INSTALL 1-1/2" EMPTY CONDUIT WITH PULL RIBBON BACK TO FIRE ALARM CONTROL PANEL FOR FUTURE TENANT USE.
 - INSTALL 1" EMPTY CONDUIT WITH PULL RIBBON BACK TO TELECOM GROUNDING BAR FOR FUTURE TENANT USE.
 - INSTALL 2" EMPTY CONDUIT WITH PULL RIBBON BACK TO TELECOM BACKBOARD FOR FUTURE TENANT USE.
 - EXTEND FUTURE TENANT USE CONDUITS 12" ABOVE GRADE INTO SUITE AND LABEL CONDUIT ORIGINATION LOCATION ACCORDINGLY.
 - TELECOMMUNICATIONS BACKBOARD, 4 FT. x 6 FT., HIGH x 3/4" EXTERIOR PLYWOOD. PAINT TWO COATS FIRE RETARDANT PAINT. INSTALL ONE NO.6 COPPER GROUND CONDUCTOR IN 3/4" CONDUIT TO BUILDING GROUND, LEAVE 4 FT. SLACK CONDUCTOR AT BACKBOARD.
 - EXTEND CIRCUIT TO ELEVATOR PENTHOUSE ABOVE FOR CIRCUIT CONTINUATION.
 - CONNECT LIGHTING NETWORK CONTROLLER TO CIRCUIT AS INDICATED.
 - CONNECT TO LIGHTING CIRCUIT SERVING THIS SPACE.
 - EXTEND CIRCUIT TO ELEVATOR CEILING ABOVE FOR CIRCUIT CONTINUATION.
 - INSTALL TAMPER SWITCH AT TENANT ISOLATION VALVE FOR FIRE ALARM SYSTEM NOTIFICATION. REFER TO SPRINKLER PLANS FOR LOCATION.



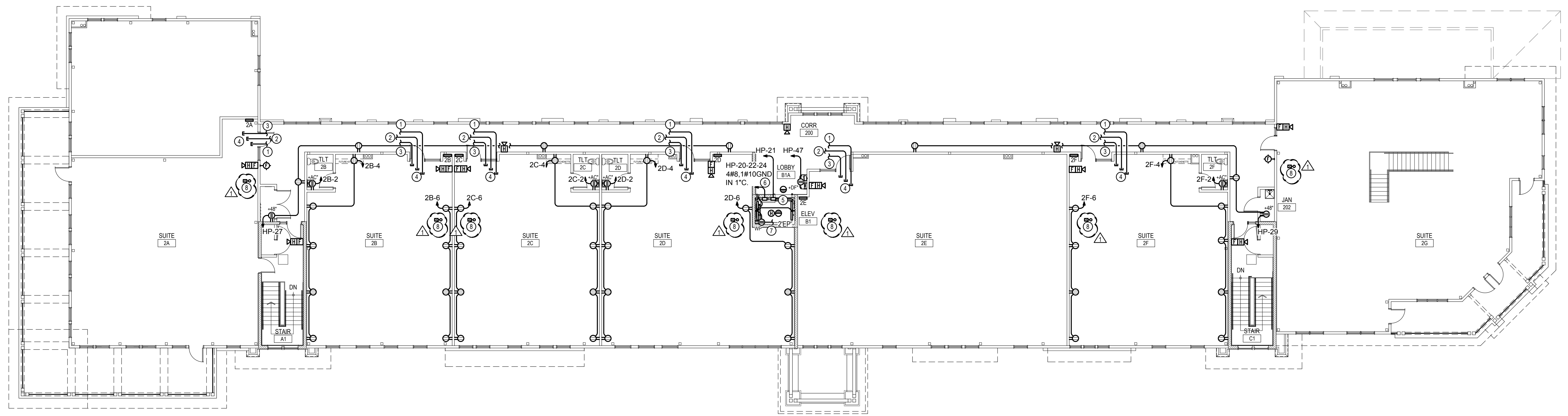
FIRST FLOOR PLAN ELECTRICAL

3/32" = 1'-0"



HG ENGINEERS
142 EGLIN PARKWAY SE
FORT WALTON BEACH, FLORIDA, 32548
E-MAIL: OFFICE@HGENGINERS.COM
PH: 850.243.6723
FL AUTHORIZATION NO. 00000660
Christopher A. Garock, FL PE No. 53924
Thomas R. Abner, FL PE No. 79172
Daniel J. White, FL PE No. 73790
Caleb W. Leonard, FL PE No. 91762

- NOTES:**
- ① INSTALL 1-1/2" EMPTY CONDUIT WITH PULL RIBBON BACK TO FIRE ALARM CONTROL PANEL FOR FUTURE TENANT USE.
 - ② INSTALL 1" EMPTY CONDUIT WITH PULL RIBBON BACK TO TELECOM GROUNDING BAR FOR FUTURE TENANT USE.
 - ③ INSTALL 2" EMPTY CONDUIT WITH PULL RIBBON BACK TO TELECOM BACKBOARD FOR FUTURE TENANT USE.
 - ④ EXTEND FUTURE TENANT USE CONDUITS 5FT. INTO SUITE ABOVE FUTURE CEILING HEIGHT AND LABEL CONDUIT ORIGIN LOCATION ACCORDINGLY.
 - ⑤ 30/30R FUSED DISCONNECT FOR ELEVATOR CAB LIGHTS, CONTROLS, AND AUXILIARY POWER. LOCKABLE IN THE OPEN POSITION. VERIFY LOCATION WITH ELEVATOR SUPPLIER.
 - ⑥ 60/30R FUSED DISCONNECT FOR ELEVATOR MACHINE. CURRENT LIMITING CLASS RK1 FUSES OR EQUIVALENT. LOCKABLE IN THE OPEN POSITION. EQUIPPED WITH TWO AUXILIARY CONTACTS. VERIFY LOCATION WITH ELEVATOR SUPPLIER.
 - ⑦ COORDINATE RECEPTACLE INSTALLATION LOCATION WITH ELEVATOR SUPPLIER PRIOR TO ROUGHING IN FOR LOCATION.
 - ⑧ EXTEND CIRCUIT TO ELEVATOR PIT BELOW FOR CIRCUIT CONTINUATION.
 - ⚠ ⑨ INSTALL TAMPER SWITCH AT TENANT ISOLATION VALVE FOR FIRE ALARM SYSTEM NOTIFICATION. REFER TO SPRINKLER PLANS FOR LOCATION.



PROJECT INFORMATION

PROJECT TITLE
**DEER MOSS CREEK
NEW TOWN CENTER**

PROJECT ADDRESS
NICEVILLE, FLORIDA

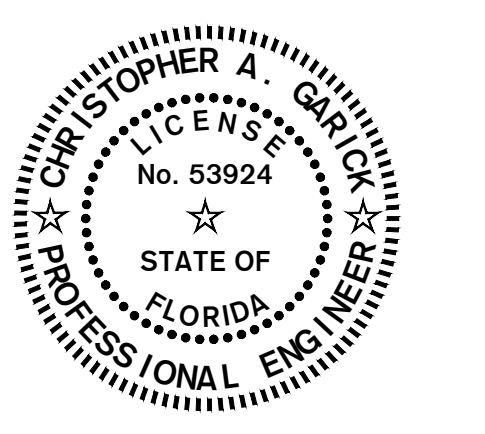
PROJECT OWNER
7CRPi
ANNIVERSARY 1988-2024
Ruckel Properties, Inc.
REAL ESTATE & DEVELOPMENT

PROJECT TEAM

ARCHITECT
**NOELKER
AND HULL**
ASSOCIATES, INC.
ARCHITECTS

30 WEST KING STREET
CHAMBERSBURG, PA | 17201-1540
P: 717.263.8464 | F: 717.263.6031
NOELKERHULL.COM
PA | MD

- STRUCTURAL ENGINEER
BAKER, INGRAM & ASSOCIATES
1547 OREGON PIKE
LANCASTER, PA | 17601
P: 717.290.7400 | F: 717.290.7402
- MECHANICAL & PLUMBING ENGINEER
PETERSON ENGINEERING
75 SOUTH F STREET
PENSACOLA, FL | 32502
P: 850.434.0513 | F: 850.434.9674
ELECTRICAL ENGINEER
- ELECTRICAL ENGINEER
HG ENGINEERS
142 EGLIN PKWY SE
FORT WALTON BEACH, FL | 32548
P: 850.243.6723 | F: 850.644.5420
OWNERS REPRESENTATIVE
- OWNERS REPRESENTATIVE
MATRIX DESIGN GROUP, INC.
320 BAYSHORE DRIVE, SUITE 8
NICEVILLE, FL | 32578
P: 850.279.4298
- CIVIL & LANDSCAPE ENGINEER
MATRIX DESIGN GROUP, INC.
320 BAYSHORE DRIVE, SUITE 8
NICEVILLE, FL | 32578
P: 850.279.4298



SHEET INFORMATION

KEY PLAN

SECOND FLOOR

FIRST FLOOR

REVISIONS

REV. #:	DESCRIPTION:	DATE:
1	ADDENDUM NO.01	31 MAR 2026

PROJECT STATUS

BID & PERMIT SET

JOB NUMBER: **25027**

ISSUE DATE: **17 MARCH 2026**

SCALE: **AS INDICATED**

SHEET TITLE:
**SECOND FLOOR PLAN
ELECTRICAL**

SHEET NUMBER:
E301

SECOND FLOOR PLAN ELECTRICAL
3/32" = 1'-0"

HG ENGINEERS

HG Engineers
142 EGLIN PARKWAY SE
FORT WALTON BEACH, FLORIDA, 32548
E-MAIL: OFFICE@HGENGINERS.COM
P: 850.243.6723
FL AUTHORIZATION NO. 00000660

Christopher A. Garock, FL PE No. 53924
Thomas R. Abner, FL PE No. 73772
Daniel J. White, FL PE No. 73790
Caleb W. Leonard, FL PE No. 91762

25056
Job No.

Published by: RENSLE - 2:42 PM - E301 SECOND FLOOR PLAN ELECTRICAL.dwg - Project Manager: Rick Engle

HOUSE POWER PANEL											
HP		SYSTEM		208/120V		3Ø		4W			
RATING		400A		M.C.B.		10,000 AIC MINIMUM					
ENCLOSURE		NEMA 1		SURFACE MOUNT							
OPTIONS		BOLT ON BREAKERS									
CKT #	SERVING	CKT BKR	CONNECTED LOAD (VA)	CKT BKR	SERVING	CKT #	TRIP	POLE	TRIP		
1	CU-1AHU-A1	45	2	8700	500	1	20		FIRE ALARM CONTROL PANEL	2	
3				8700	2	45			CU-C1AHU-C1	4	
5	CU-106AHU-106	25	2	2500						6	
7				2500	2	25			CU-103AHU-103	8	
9	RTU-CO1	50	2	784						10	
11				2500	2	25			CU-105AHU-105	12	
13	ACCESS CONTROL PANEL	20	1	500						14	
15	REC-MECH 1A	20	1	414	7804	2	50		RTU-CO2	16	
17	REC-TELECOM BACKBOARD	20	1	720						18	
19	REC-ROOF	20	1	900	15516	**3	50		ELEVATOR MOTOR	20	
21	ELEVATOR CONTROLS AND CAB LITS	20	1	850						22	
23	ELEVATOR SHUNT LIGHTS AND RECEPIS	20	1	760						24	
25	REC-MECH/ELEC 106/106	20	1	360					ELEVATOR SHUNT TRIP	26	
27	REC-CORR 20V/10R	20	1	900	200	1	20		SPRINKLER FLOW ALARM BELL	28	
29	REC-CORR 200/AN 202	20	1	720	1136	1	20		LTS-1ST FLR EXTERIOR BLDG FAÇADE	30	
31	LTS-REC-STOR 101, ELEV LOBBY B1A	20	1	603	558	1	20		LTS-1ST FLR EXTERIOR BLDG FAÇADE	32	
33	LTS STAIR A1	20	1	211	784	1	20		LTS-1ST FLR EXTERIOR BLDG FAÇADE	34	
35	LTS STAIR C1	20	1	211	540	1	20		LTS-BREEZEWAY	36	
37	LTS-EXTERIOR WALKWAY SOFFIT	20	1	762	676	1	20		LTS-2ND FLR EXTERIOR BLDG FAÇADE	38	
39	LTS-EXTERIOR WALKWAY SOFFIT	20	1	624	910	1	20		LTS-2ND FLR EXTERIOR BLDG FAÇADE	40	
41	LTS-CORR 200	20	1	1333	1200	1	20		BEER GARDEN FESTOON LIGHTING	42	
43	CU-101	25	2	2500	2500	2	25		CU-B1A	44	
45										46	
47	ELECTRIC WATER COOLER	20	1	600	200	1	20		IRRIGATION CONTROLS	48	
49	SPARE	20	1	0	0	1	20		SPARE	50	
51	SPARE	20	1	0	0	1	20		SPARE	52	
53	SPARE	20	1	0	0	1	20		SPARE	54	
55	SPARE ONLY									56	
57	SPARE ONLY									58	
59	SPARE ONLY									60	
TOTAL CONNECTED LOAD =				7865 VA		/ 360		= 221.3 A			

NOTES:
 * Provide "RED" breaker labeled "FIRE ALARM CIRCUIT", capable of being locked in the "ON" position. Per NFPA-70 - Article 760.12(B)
 ** Provide LSF Main Circuit Breaker
 *** Install Shunt Trip Breaker, provide two additional auxiliary contacts.

TENANT SUITE '1C'											
1C		SYSTEM		208/120V		3Ø		4W			
RATING		225A		M.C.B.		10,000 AIC MINIMUM					
ENCLOSURE		NEMA 1		SURFACE MOUNT							
OPTIONS		BOLT ON BREAKERS									
CKT #	SERVING	CKT BKR	CONNECTED LOAD (VA)	CKT BKR	SERVING	CKT #	TRIP	POLE	TRIP		
1	AHU-1C	70	2	1224	8619	2	60		CU-1C	2	
3										4	
5	LTS-MECH 1C/TEMPORARY	20	1	98		1			SPACE ONLY	6	
7	SPACE ONLY									8	
9	SPACE ONLY									10	
11	SPACE ONLY									12	
13	SPACE ONLY									14	
15	SPACE ONLY									16	
17	SPACE ONLY									18	
19	SPACE ONLY									20	
21	SPACE ONLY									22	
23	SPACE ONLY									24	
25	SPACE ONLY									26	
27	SPACE ONLY									28	
29	SPARE	20	1	0	0	1	20		SPARE	30	
31	SPARE	20	1	0	0	1	20		SPARE	32	
33	SPARE	20	1	0	0	1	20		SPARE	34	
35	SPACE ONLY				180	1	20		REC-MECH 1C	36	
37	SPACE ONLY				0	3	30		SURGE PROTECTIVE DEVICE	38	
39	SPACE ONLY									40	
41	SPACE ONLY									42	
TOTAL CONNECTED LOAD =				2111 VA		/ 360		= 58.6 A			

NOTES:
 * Provide LSF Main Circuit Breaker

TENANT SUITE '1F'											
1F		SYSTEM		208/120V		3Ø		4W			
RATING		225A		M.C.B.		10,000 AIC MINIMUM					
ENCLOSURE		NEMA 1		SURFACE MOUNT							
OPTIONS		BOLT ON BREAKERS									
CKT #	SERVING	CKT BKR	CONNECTED LOAD (VA)	CKT BKR	SERVING	CKT #	TRIP	POLE	TRIP		
1	AHU-1F	60	2	8614	7419	2	50		CU-1F	2	
3										4	
5	LTS-MECH 1F/LTS/SUITE	20	1	620	180	1	20		REC-TLT	6	
7	REC-SUITE	20	1	720	720	1	20		REC-SUITE	8	
9	SPACE ONLY									10	
11	SPACE ONLY									12	
13	SPACE ONLY									14	
15	SPACE ONLY									16	
17	SPACE ONLY									18	
19	SPACE ONLY									20	
21	SPACE ONLY									22	
23	SPACE ONLY									24	
25	SPACE ONLY									26	
27	SPACE ONLY									28	
29	SPARE	20	1	0	0	1	20		SPARE	30	
31	SPARE	20	1	0	0	1	20		SPARE	32	
33	SPARE	20	1	0	0	1	20		SPARE	34	
35	SPACE ONLY				180	1	20		REC-MECH 1F	36	
37	TWH-1	70	3	18000	0	3	30		SURGE PROTECTIVE DEVICE	38	
39										40	
41										42	
TOTAL CONNECTED LOAD =				36453 VA		/ 360		= 101.3 A			

NOTES:
 * Provide LSF Main Circuit Breaker

TENANT SUITE '1A'											
1A		SYSTEM		208/120V		3Ø		4W			
RATING		400A		M.C.B.		10,000 AIC MINIMUM					
ENCLOSURE		NEMA 1		SURFACE MOUNT							
OPTIONS		BOLT ON BREAKERS		TWO EQUAL SECTIONS, 100% RATED MAIN BRAKER							
CKT #	SERVING	CKT BKR	CONNECTED LOAD (VA)	CKT BKR	SERVING	CKT #	TRIP	POLE	TRIP		
1	AHU-BR1	70	3	21780	12069	3	50		CU-BR1	2	
3										4	
5										6	
7	RTU-BR2	100	3	17030	567	1	20		EXTERIOR DINING CEILING FANS	8	
9				720	1	20			LTS-EXTERIOR DINING	10	
11	LTS-MECH 1A/TEMPORARY	20	1	932		1			SPACE ONLY	12	
13	SPACE ONLY									14	
15	SPACE ONLY									16	
17	SPACE ONLY									18	
19	SPACE ONLY									20	
21	SPACE ONLY									22	
23	SPACE ONLY									24	
25	SPACE ONLY									26	
27	SPACE ONLY									28	
29	SPACE ONLY									30	
31	SPACE ONLY									32	
33	SPACE ONLY									34	
35	SPACE ONLY									36	
37	SPACE ONLY									38	
39	SPACE ONLY									40	
41	SPACE ONLY									42	
43	SPACE ONLY									44	
45	SPACE ONLY									46	
47	SPACE ONLY									48	
49	SPACE ONLY									50	
51	SPACE ONLY									52	
53	SPACE ONLY									54	
55	SPACE ONLY									56	
57	SPACE ONLY									58	
59	SPACE ONLY									60	
61	SPACE ONLY									62	
63	SPACE ONLY									64	
65	SPACE ONLY									66	
67	SPACE ONLY									68	
69	SPACE ONLY									70	
71	SPARE	20	1	0	0	1	20		SPARE	72	
73	SPARE	20	1	0	0	1	20		SPARE	74	
75	SPARE	20	1	0	0	1	20		SPARE	76	
77	SPACE ONLY				180	1	20		REC-MECH 1A	78	
79	SPACE ONLY				0	3	30		SURGE PROTECTIVE DEVICE	80	
81	SPACE ONLY									82	
83	SPACE ONLY									84	
TOTAL CONNECTED LOAD =				52658 VA		/ 360		= 146.3 A			

NOTES:
 * Provide LSF Main Circuit Breaker

TENANT SUITE '1D'											
1D		SYSTEM		208/120V		3Ø		4W			
RATING		225A		M.C.B.		10,000 AIC MINIMUM					
ENCLOSURE		NEMA 1		SURFACE MOUNT							
OPTIONS		BOLT ON BREAKERS									
CKT #	SERVING	CKT BKR	CONNECTED LOAD (VA)	CKT BKR	SERVING	CKT #	TRIP	POLE	TRIP		
1	AHU-1D	70	2	1224	8619	2	60		CU-1D	2	
3										4	
5	LTS-MECH 1D/TEMPORARY	20	1	98		1			SPACE ONLY	6	
7	SPACE ONLY									8	
9	SPACE ONLY									10	
11	SPACE ONLY									12	
13	SPACE ONLY									14	
15	SPACE ONLY									16	
17	SPACE ONLY									18	
19	SPACE ONLY									20	
21	SPACE ONLY									22	
23	SPACE ONLY									24	
25	SPACE ONLY									26	
27	SPACE ONLY									28	
29	SPARE	20	1	0	0	1	20		SPARE	30	
31	SPARE	20	1	0	0	1	20		SPARE	32	
33	SPARE	20	1	0	0	1	20		SPARE	34	
35	SPACE ONLY				180	1	20		REC-MECH 1D	36	
37	SPACE ONLY				0	3	30		SURGE PROTECTIVE DEVICE	38	
39	SPACE ONLY									40	
41	SPACE ONLY									42	
TOTAL CONNECTED LOAD =				2111 VA		/ 360		= 58.6 A			

NOTES:
 * Provide LSF Main Circuit Breaker

TENANT SUITE '1G'									
1G		SYSTEM		208/120V		3Ø		4W	
RATING		225A		M.C.B.		10,000 AIC MINIMUM			
ENCLOSURE		NEMA 1		SURFACE MOUNT					
OPTIONS		BOLT ON BREAKERS							
CKT #	SERVING	CKT BKR	CONNECTED LOAD (VA)	CKT BKR	SERVING	CKT #	TRIP	POLE	TRIP
1	AHU-1G	60	2	8614	7419	2	50		