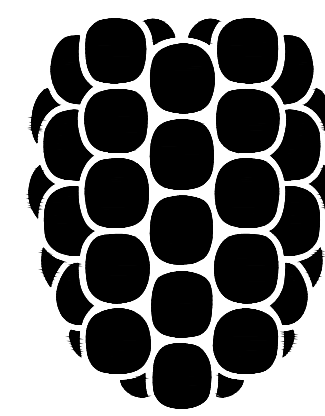


# RISING LEADERS ACADEMY DUCT AND BUILDING ENVELOPE IMPROVEMENTS

PANAMA CITY, FLORIDA

MAY 5, 2026

DEWBERRY PROJECT NO. 50193543  
BIDDING PURPOSES ONLY



# Dewberry®

Dewberry

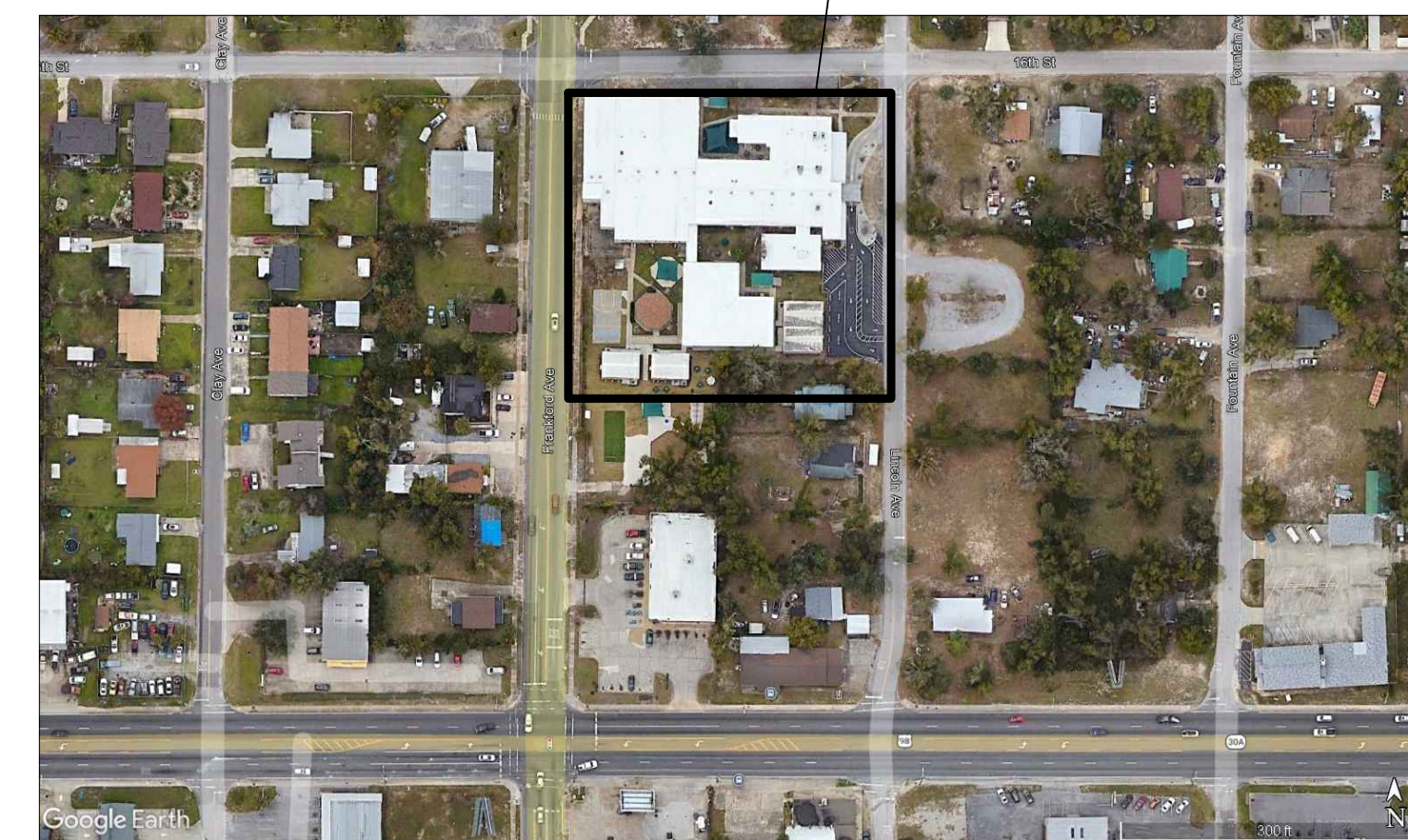
203 Aberdeen Parkway  
Panama City, FL 32405

### DRAWING INDEX

A-100 - EXISTING ROOF SOFFIT REMEDIATION DETAIL  
MD1.0 - PARTIAL FLOOR PLAN - MECHANICAL DEMOLITION  
MD1.1 - PARTIAL FLOOR PLAN - MECHANICAL DEMOLITION  
M1.0 - PARTIAL FLOOR PLAN - MECHANICAL  
M1.1 - PARTIAL FLOOR PLAN - MECHANICAL

### BUILDING CODES

- \* FLORIDA BUILDING CODE, BUILDING 2023 8th EDITION
- \* FLORIDA BUILDING CODE, ACCESSIBILITY 2023 8th EDITION
- \* FLORIDA BUILDING CODE, MECHANICAL 2023 8th EDITION
- \* FLORIDA BUILDING CODE, ENERGY CONSERVATION 2023 8th EDITION
- \* FLORIDA BUILDING CODE, FUEL GAS 2023 8th EDITION
- \* FLORIDA BUILDING CODE, PLUMBING 2023 8th EDITION
- \* FLORIDA FIRE PREVENTION CODE, 2023 8th EDITION
- \* FLORIDA ELECTRICAL CODE, 2020



Dewberry  
203 Aberdeen Parkway  
Panama City, FL 32405

RISING LEADERS ACADEMY  
DUCT AND BUILDING  
ENVELOPE IMPROVEMENTS

PANAMA CITY, FLORIDA

SEAL

### REVISIONS

NO.	DESCRIPTION	DATE

DRAWN BY \_\_\_\_\_ DCM  
APPROVED BY \_\_\_\_\_ TEG  
CHECKED BY \_\_\_\_\_ CLR  
DATE \_\_\_\_\_ 5 MAY 2026

TITLE

COVER SHEET

PROJECT NO.

Dewberry No. 50193543

# C1.0

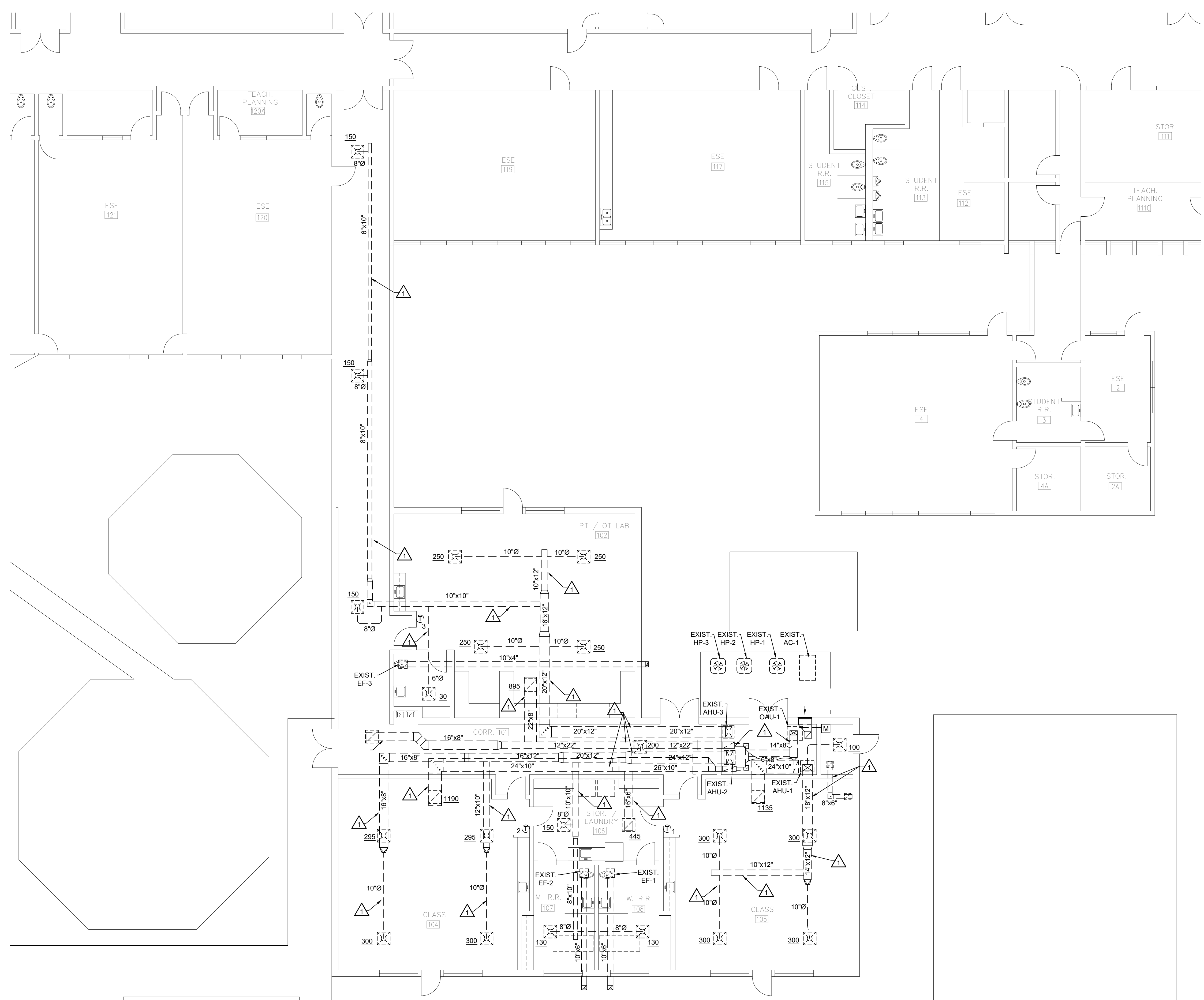
SHEET NO.





1 2 3 4 5

E  
D  
C  
B  
A



**PARTIAL FLOOR PLAN - MECHANICAL**  
 SCALE: 1/8" = 1'-0"

**NOTES:**  
 △ SEAL ALL JOINTS ON EXISTING SUPPLY, RETURN AND OUTSIDE AIR DUCTS. PROVIDE NEW 3" EXTERNAL DUCT INSULATION.

**GENERAL NOTE:**  
 1. CONTRACTOR IS TO REMOVE EXISTING CEILING GRID AND TILE AS REQUIRED FOR DUCT REMEDIATION WORK. CEILINGS ARE TO BE RE-INSTALLED AFTER WORK IS COMPLETED.  
 2. ALL EXISTING STAINED OR BROKEN LAY-IN CEILING TILES ARE TO BE REPLACED AS REQUIRED AFTER DUCT REMEDIATION WORK IS COMPLETED

**HVAC GENERAL NOTES**

- MECHANICAL DRAWINGS ARE DIAGRAMMATIC AND SUBJECT TO REQUIREMENTS OF ARCHITECTURAL DRAWINGS AND CONDITIONS EXISTING IN THE FIELD. MECHANICAL DRAWINGS INDICATE GENERALLY THE LOCATION OF COMPONENTS AND ARE NOT INTENDED TO SHOW ALL FITTINGS OR ALL DETAILS OF THE WORK TO BE PERFORMED.
- FOLLOW THE DRAWINGS CLOSELY, COORDINATE DIMENSIONS WITH ARCHITECTURAL DRAWINGS AND FIELD CONDITIONS. DO NOT SCALE MECHANICAL DRAWINGS FOR LOCATIONS OF SYSTEM COMPONENTS.
- COORDINATE CONSTRUCTION OF ALL MECHANICAL WORK WITH ARCHITECTURAL, STRUCTURAL, CIVIL, ELECTRICAL WORK, ETC., SHOWN ON OTHER CONTRACT DOCUMENT DRAWINGS.
- MAKE NO CHANGES WITHOUT THE ENGINEER'S WRITTEN PERMISSION. IN CASE OF DOUBT, OBTAIN ENGINEER'S DECISION BEFORE PROCEEDING WITH WORK. FAILURE TO FOLLOW THIS INSTRUCTION SHALL MAKE THE CONTRACTOR LIABLE FOR DAMAGE TO OTHER WORK AND RESPONSIBLE FOR REMOVING AND REPAIRING DEFECTIVE OR MISLOCATED WORK IN PROPER MANNER.
- DO NOT SCALE DRAWINGS TO LOCATE DIFFUSERS AND EQUIPMENT. COORDINATE WITH NEW AND EXISTING LIGHTING, ELECTRICAL CONDUIT, AND ALL EXISTING FIELD CONDITIONS.
- PRIOR TO PREPARING SUBMITTALS, VERIFY ALL EQUIPMENT VOLTAGES WITH ELECTRICAL DRAWINGS AND ELECTRICAL CONTRACTOR AND REPORT ANY INCONSISTENCIES TO THE ARCHITECT PRIOR TO ORDERING EQUIPMENT. ANY FAILURE TO DO SO WILL MAKE THE MECHANICAL CONTRACTOR RESPONSIBLE FOR ANY EQUIPMENT ORDERED WITH THE INCORRECT VOLTAGE.
- ALL WORK SHALL COMPLY WITH ALL APPLICABLE CODES AND STANDARDS (SEE SPECIFICATIONS).

**HVAC SPECIFICATIONS**

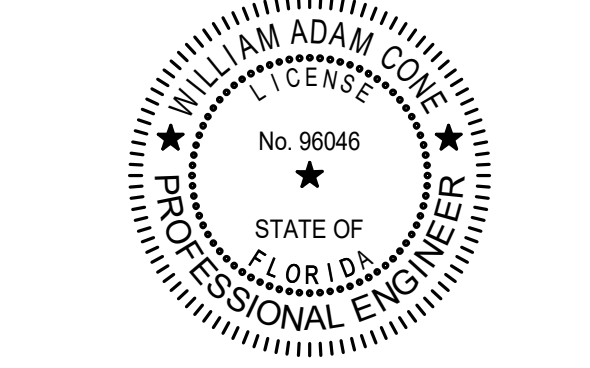
- ALL DUCTWORK TO BE GALVANIZED SHEET METAL CONSTRUCTION ACCORDING TO CURRENT ADDITION OF SMACNA HVAC DUCT CONSTRUCTION STANDARDS. SIZES SHOWN ARE INSIDE INSULATION.
  - LOW PRESSURE: SUPPLY, RETURN, AND OSA: 2" PRESSURE CLASS, "B" SEAL.
  - EXHAUST: 2 PRESSURE CLASS, "B" SEAL.
- ALL CONCEALED SUPPLY, MECHANICAL ROOM SUPPLY, AND OSA DUCTWORK SHALL BE EXTERNALLY WRAPPED WITH 3" THICK FLEXIBLE GLASS FIBER INSULATION WITH FOIL SCRIM KRAFT (FSK) FACING. FLAME SPREAD CLASSIFICATION, 25 OR LESS, SMOKE DEVELOPED RATING NOT EXCEEDING 50. MINIMUM DENSITY, 1 LB./CU. FT., MAXIMUM THERMAL CONDUCTIVITY AT 75°F MEAN TEMPERATURE 0.26 BTU/(HR)(SQ. FT.)(°F/IN).
- BRANCH DUCT CONNECTIONS FOR CONNECTING ROUND LOW PRESSURE BRANCHES TO RECTANGULAR LOW PRESSURE TRUNKS: GALVANIZED STEEL SPIN-IN FITTINGS WITH INTEGRAL DAMPERS, AND BEADED COLLARS, SIMILAR AND EQUAL TO FLEXMASTER, SERIES FLD FOR SHEET METAL TRUNKS WITH STAND OFFS FOR DAMPER QUADRANTS. GAUGES: AS REQUIRED FOR PRESSURE CLASS. (26 GAUGE MINIMUM.)
- ALL EXPOSED SUPPLY AND ALL RETURN DUCTWORK SHALL BE EXTERNALLY WRAPPED WITH 3" THICK FLEXIBLE GLASS FIBER INSULATION WITH FOIL SCRIM KRAFT (FSK) FACING. FLAME SPREAD CLASSIFICATION, 25 OR LESS, SMOKE DEVELOPED RATING NOT EXCEEDING 50. MINIMUM DENSITY, 1 LB./CU. FT., MAXIMUM THERMAL CONDUCTIVITY AT 75°F MEAN TEMPERATURE 0.26 BTU/(HR)(SQ. FT.)(°F/IN).
- FLEXIBLE DUCTS SHALL BE THERMAFLEX MKC, FLEXMASTER TYPE 4, OR EQUAL WITH MINIMUM R5 RATING. HANG DUCTS IN ACCORDANCE WITH MANUFACTURER'S RECOMMENDATIONS. MAKE CONNECTIONS BETWEEN FLEXIBLE DUCTS AND AIR DEVICES OR SPIN-INS WITH NYLON DRAW BANDS. MAXIMUM LENGTH = 5 FT.
- AIR DEVICES SHALL BE TITUS, PRICE, OR NAILOR. SEE AIR DEVICE LEGEND.
- MANUAL BALANCING DAMPERS: COMPLY WITH SMACNA HVAC DUCT CONSTRUCTION STANDARDS, FIGURE 2-12 AND 2-13. EQUIP ALL DAMPERS WITH LOCKING QUADRANTS AND END BEARINGS. SAW-MARK ENDS OF DAMPER RODS PARALLEL TO BLADES. END BEARINGS AND QUADRANTS SHALL HAVE AIR TIGHT DUCT CONNECTIONS AND SHAFT SEALS, DURO-DYNE OR EQUAL.



Dewberry  
 203 Aberdeen Parkway  
 Panama City, FL 32405

**RISING LEADERS ACADEMY  
 DUCT AND BUILDING  
 ENVELOPE IMPROVEMENTS**  
 PANAMA CITY, FLORIDA

SEAL  
 This item has been digitally signed and sealed by William Adam Conner, PE on the date adjacent to the seal. Printed copies of this document are not considered signed and sealed and the signature must be verified on any electronic copies.



REVISIONS

NO.	DESCRIPTION	DATE

DRAWN BY: DCM  
 APPROVED BY: TEG  
 CHECKED BY: CLR  
 DATE: 5 MAY 2026  
 TITLE: \_\_\_\_\_

**PARTIAL FLOOR PLAN - MECHANICAL**

PROJECT NO.  
 Dewberry No. 50193543

**M1.0**

SHEET NO.

1

2

3

4

5

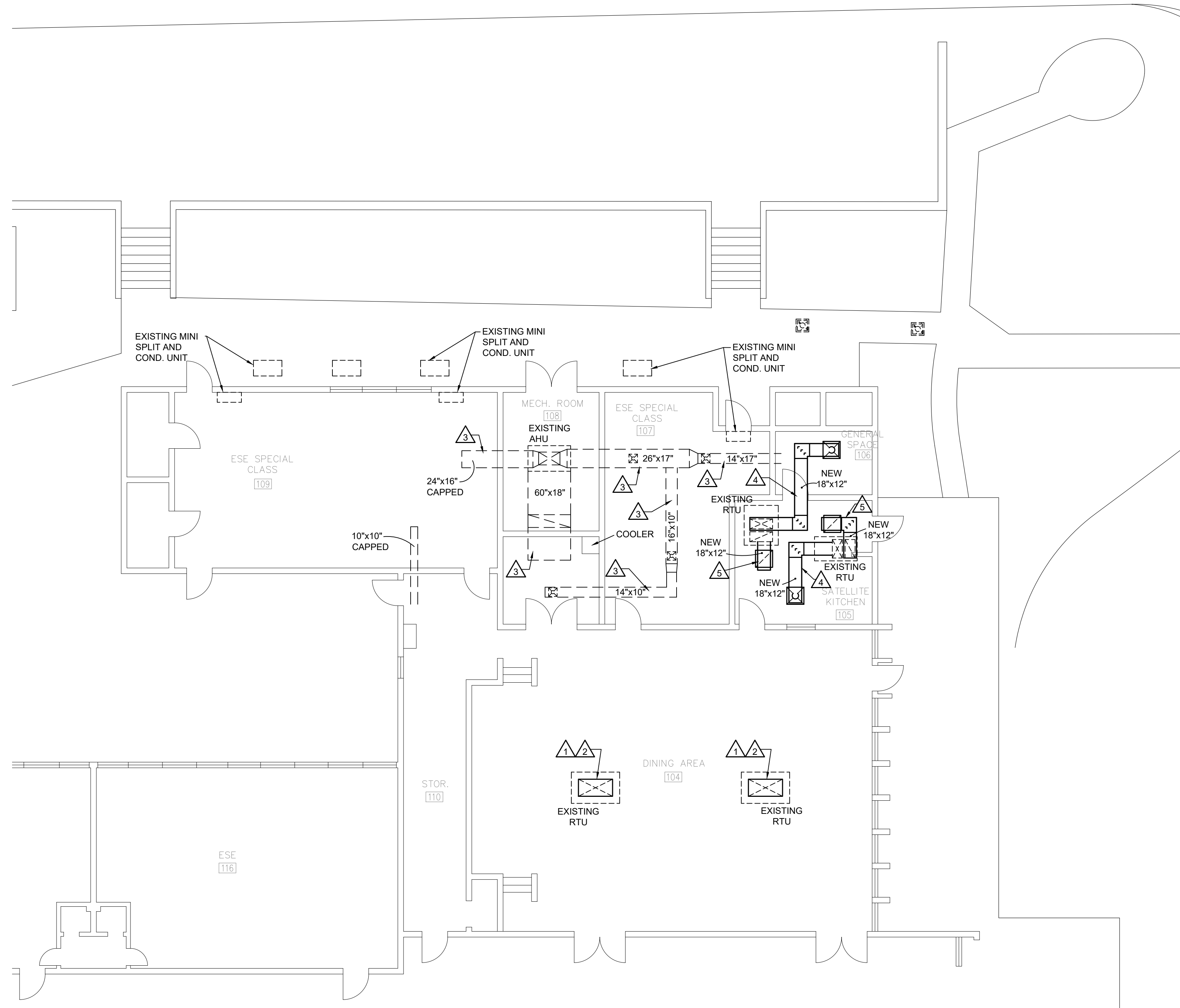
E

D

C

B

A



**PARTIAL FLOOR PLAN - MECHANICAL**  
 SCALE: 1/8" = 1'-0"

- NOTES:**
- △ PROVIDE NEW 48"x24" CONCENTRIC DIFFUSER EQUAL TO PRICE CSRD-PLD WITH FACTORY SUPPLY / RETURN PLENUM.
  - △ PROVIDE NEW SUPPLY AND RETURN DUCT BETWEEN EXISTING RTU AND NEW CONCENTRIC DIFFUSER.
  - △ SEAL ALL JOINTS ON EXISTING SUPPLY, RETURN AND OUTSIDE AIR DUCTS. PROVIDE NEW 3" EXTERNAL DUCT INSULATION.
  - △ PROVIDE NEW 18"x12" SUPPLY DUCT BETWEEN EXISTING RTU AND NEW SUPPLY DIFFUSER. SUPPLY DIFFUSER EQUAL TO PRICE AND WITH 18"x18" NECK AND 24"x24" FACE SIZE.
  - △ PROVIDE NEW 18"x12" RETURN DUCT BETWEEN EXISTING RTU AND NEW RETURN GRILLE. RETURN GRILLE EQUAL TO PRICE 635 WITH 22"x22" NECK AND 24"x24" FACE SIZE.

**GENERAL NOTE:**  
 CONTRACTOR IS TO REMOVE EXISTING CEILING GRID AND TILE AS REQUIRED FOR DUCT REMEDIATION WORK. CEILINGS ARE TO BE RE-INSTALLED AFTER WORK IS COMPLETED.

**HVAC GENERAL NOTES**

1. MECHANICAL DRAWINGS ARE DIAGRAMMATIC AND SUBJECT TO REQUIREMENTS OF ARCHITECTURAL DRAWINGS AND CONDITIONS EXISTING IN THE FIELD. MECHANICAL DRAWINGS INDICATE GENERALLY THE LOCATION OF COMPONENTS AND ARE NOT INTENDED TO SHOW ALL FITTINGS OR ALL DETAILS OF THE WORK TO BE PERFORMED.
2. FOLLOW THE DRAWINGS CLOSELY, COORDINATE DIMENSIONS WITH ARCHITECTURAL DRAWINGS AND FIELD CONDITIONS. DO NOT SCALE MECHANICAL DRAWINGS FOR LOCATIONS OF SYSTEM COMPONENTS.
3. COORDINATE CONSTRUCTION OF ALL MECHANICAL WORK WITH ARCHITECTURAL, STRUCTURAL, CIVIL, ELECTRICAL WORK, ETC., SHOWN ON OTHER CONTRACT DOCUMENT DRAWINGS.
4. MAKE NO CHANGES WITHOUT THE ENGINEER'S WRITTEN PERMISSION. IN CASE OF DOUBT, OBTAIN ENGINEER'S DECISION BEFORE PROCEEDING WITH WORK. FAILURE TO FOLLOW THIS INSTRUCTION SHALL MAKE THE CONTRACTOR LIABLE FOR DAMAGE TO OTHER WORK AND RESPONSIBLE FOR REMOVING AND REPAIRING DEFECTIVE OR MISLOCATED WORK IN PROPER MANNER.
5. DO NOT SCALE DRAWINGS TO LOCATE DIFFUSERS AND EQUIPMENT. COORDINATE WITH NEW AND EXISTING LIGHTING, ELECTRICAL CONDUIT, AND ALL EXISTING FIELD CONDITIONS.
6. PRIOR TO PREPARING SUBMITTALS, VERIFY ALL EQUIPMENT VOLTAGES WITH ELECTRICAL DRAWINGS AND ELECTRICAL CONTRACTOR AND REPORT ANY INCONSISTENCIES TO THE ARCHITECT PRIOR TO ORDERING EQUIPMENT. ANY FAILURE TO DO SO WILL MAKE THE MECHANICAL CONTRACTOR RESPONSIBLE FOR ANY EQUIPMENT ORDERED WITH THE INCORRECT VOLTAGE.
7. ALL WORK SHALL COMPLY WITH ALL APPLICABLE CODES AND STANDARDS (SEE SPECIFICATIONS).

**HVAC SPECIFICATIONS**

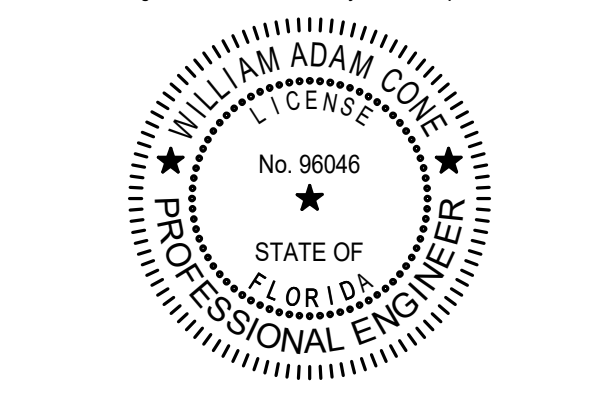
1. ALL DUCTWORK TO BE GALVANIZED SHEET METAL CONSTRUCTION ACCORDING TO CURRENT ADDITION OF SMACNA HVAC DUCT CONSTRUCTION STANDARDS. SIZES SHOWN ARE INSIDE INSULATION.
  - A. LOW PRESSURE: SUPPLY, RETURN, AND OSA: 2" PRESSURE CLASS, "B" SEAL.
  - B. EXHAUST: 2 PRESSURE CLASS, "B" SEAL.
2. ALL CONCEALED SUPPLY, MECHANICAL ROOM SUPPLY, AND OSA DUCTWORK SHALL BE EXTERNALLY WRAPPED WITH 3" THICK FLEXIBLE GLASS FIBER INSULATION WITH FOIL SCRIM KRAFT (FSK) FACING. FLAME SPREAD CLASSIFICATION, 25 OR LESS, SMOKE DEVELOPED RATING NOT EXCEEDING 50. MINIMUM DENSITY, 1 LB./CU. FT., MAXIMUM THERMAL CONDUCTIVITY AT 75°F MEAN TEMPERATURE 0.26 BTU/(HR)(SQ. FT.)(F/IN).
3. BRANCH DUCT CONNECTIONS FOR CONNECTING ROUND LOW PRESSURE BRANCHES TO RECTANGULAR LOW PRESSURE TRUNKS: GALVANIZED STEEL SPIN-IN FITTINGS WITH INTEGRAL DAMPERS, AND BEADED COLLARS. SIMILAR AND EQUAL TO FLEXMASTER, SERIES FLD FOR SHEET METAL TRUNKS WITH STAND OFFS FOR DAMPER QUADRANTS. GAUGES: AS REQUIRED FOR PRESSURE CLASS. (26 GAUGE MINIMUM.)
4. ALL EXPOSED SUPPLY AND ALL RETURN DUCTWORK SHALL BE EXTERNALLY WRAPPED WITH 3" THICK FLEXIBLE GLASS FIBER INSULATION WITH FOIL SCRIM KRAFT (FSK) FACING. FLAME SPREAD CLASSIFICATION, 25 OR LESS, SMOKE DEVELOPED RATING NOT EXCEEDING 50. MINIMUM DENSITY, 1 LB./CU. FT., MAXIMUM THERMAL CONDUCTIVITY AT 75°F MEAN TEMPERATURE 0.26 BTU/(HR)(SQ. FT.)(F/IN).
5. FLEXIBLE DUCTS SHALL BE THERMAFLEX MKC, FLEXMASTER TYPE 4, OR EQUAL WITH MINIMUM R5 RATING. HANG DUCTS IN ACCORDANCE WITH MANUFACTURER'S RECOMMENDATIONS. MAKE CONNECTIONS BETWEEN FLEXIBLE DUCTS AND AIR DEVICES OR SPIN-INS WITH NYLON DRAW BANDS. MAXIMUM LENGTH = 5 FT.
6. AIR DEVICES SHALL BE TITUS, PRICE, OR NAILOR. SEE AIR DEVICE LEGEND.
7. MANUAL BALANCING DAMPERS: COMPLY WITH SMACNA HVAC DUCT CONSTRUCTION STANDARDS, FIGURE 2-12 AND 2-13. EQUIP ALL DAMPERS WITH LOCKING QUADRANTS AND END BEARINGS. SAW-MARK ENDS OF DAMPER RODS PARALLEL TO BLADES. END BEARINGS AND QUADRANTS SHALL HAVE AIR TIGHT DUCT CONNECTIONS AND SHAFT SEALS. DURO-DYNE OR EQUAL.



Dewberry  
 203 Aberdeen Parkway  
 Panama City, FL 32405

**RISING LEADERS ACADEMY  
 DUCT AND BUILDING  
 ENVELOPE IMPROVEMENTS**  
 PANAMA CITY, FLORIDA

SEAL  
This item has been digitally signed and sealed by William Adam Conner, PE on the date adjacent to the seal. Printed copies of this document are not considered signed and sealed and the signature must be verified on any electronic copies.



**REVISIONS**

NO.	DESCRIPTION	DATE

NO. DESCRIPTION DATE

DRAWN BY DCM

APPROVED BY TEG

CHECKED BY CLR

DATE 5 MAY 2026

**PARTIAL FLOOR PLAN - MECHANICAL**

PROJECT NO.  
 Dewberry No. 50193543

**M1.1**

SHEET NO.