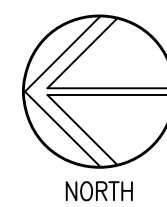
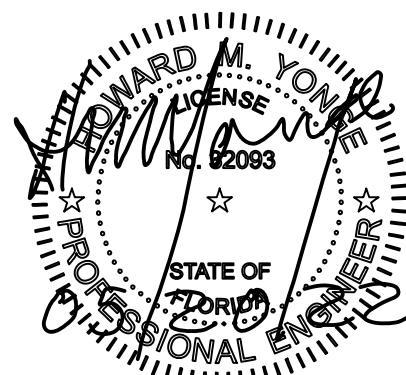


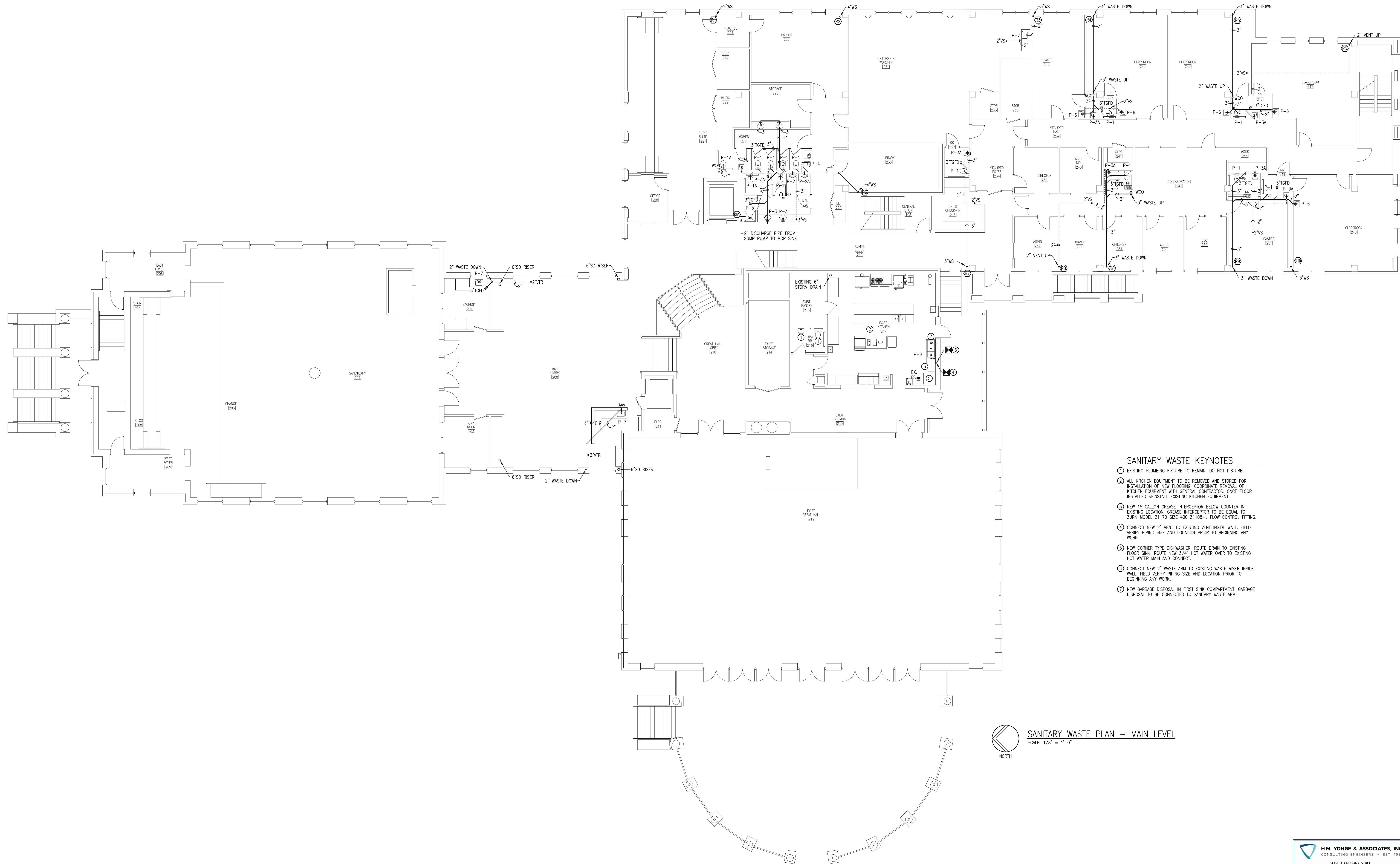
SANITARY WASTE KEYNOTES

- EXISTING PLUMBING FIXTURE TO REMAIN, DO NOT DISTURB.
- ELEVATOR PIT STAND-OR OIL-WINDER CONTROL SYSTEM OR APPROVED EQUAL, TO BE USED IN LIEU OF SUMP PUMP AND OIL/WATER SEPARATOR SUBJECT TO APPROVAL FROM CITY INSPECTOR. PIPING INSIDE SHAFT SHALL BE COPPER OR STEEL.
- 2\"/>
- CONNECT NEW SANITARY WASTE PIPING TO EXISTING SANITARY WASTE PIPING. FIELD VERIFY PIPE SIZE AND LOCATION PRIOR TO BEGINNING ANY WORK.
- CONNECT NEW STORM DRAIN PIPING TO EXISTING 6\"/>
- 4\"/>



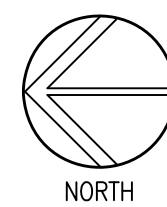
SANITARY WASTE PLAN - LOWER LEVEL
SCALE: 1/8\"/>





SANITARY WASTE KEYNOTES

- EXISTING PLUMBING FIXTURE TO REMAIN, DO NOT DISTURB.
- ALL KITCHEN EQUIPMENT TO BE REMOVED AND STORED FOR INSTALLATION OF NEW FLOORING. COORDINATE REMOVAL OF KITCHEN EQUIPMENT WITH GENERAL CONTRACTOR. ONCE FLOOR INSTALLED REINSTALL EXISTING KITCHEN EQUIPMENT.
- NEW 15 GALLON GREASE INTERCEPTOR BELOW COUNTER IN EXISTING LOCATION. GREASE INTERCEPTOR TO BE EQUAL TO ZURN MODEL Z1170 SIZE 400 Z1108-L FLOW CONTROL FITTING.
- CONNECT NEW 2" VENT TO EXISTING VENT INSIDE WALL. FIELD VERIFY PIPING SIZE AND LOCATION PRIOR TO BEGINNING ANY WORK.
- NEW CORNER TYPE DISHWASHER. ROUTE DRAIN TO EXISTING FLOOR SINK. ROUTE NEW 3/4" HOT WATER OVER TO EXISTING HOT WATER MAIN AND CONNECT.
- CONNECT NEW 2" WASTE ARM TO EXISTING WASTE RISER INSIDE WALL. FIELD VERIFY PIPING SIZE AND LOCATION PRIOR TO BEGINNING ANY WORK.
- NEW GARBAGE DISPOSAL IN FIRST SINK COMPARTMENT. GARBAGE DISPOSAL TO BE CONNECTED TO SANITARY WASTE ARM.

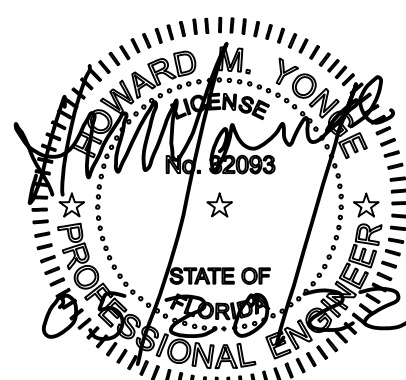


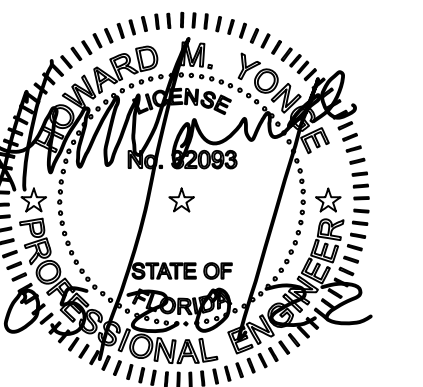
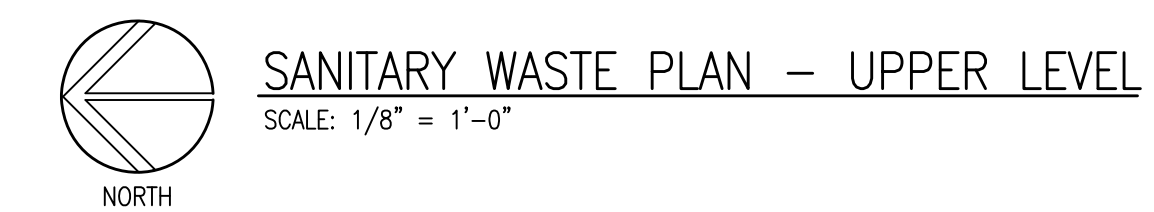
SANITARY WASTE PLAN - MAIN LEVEL

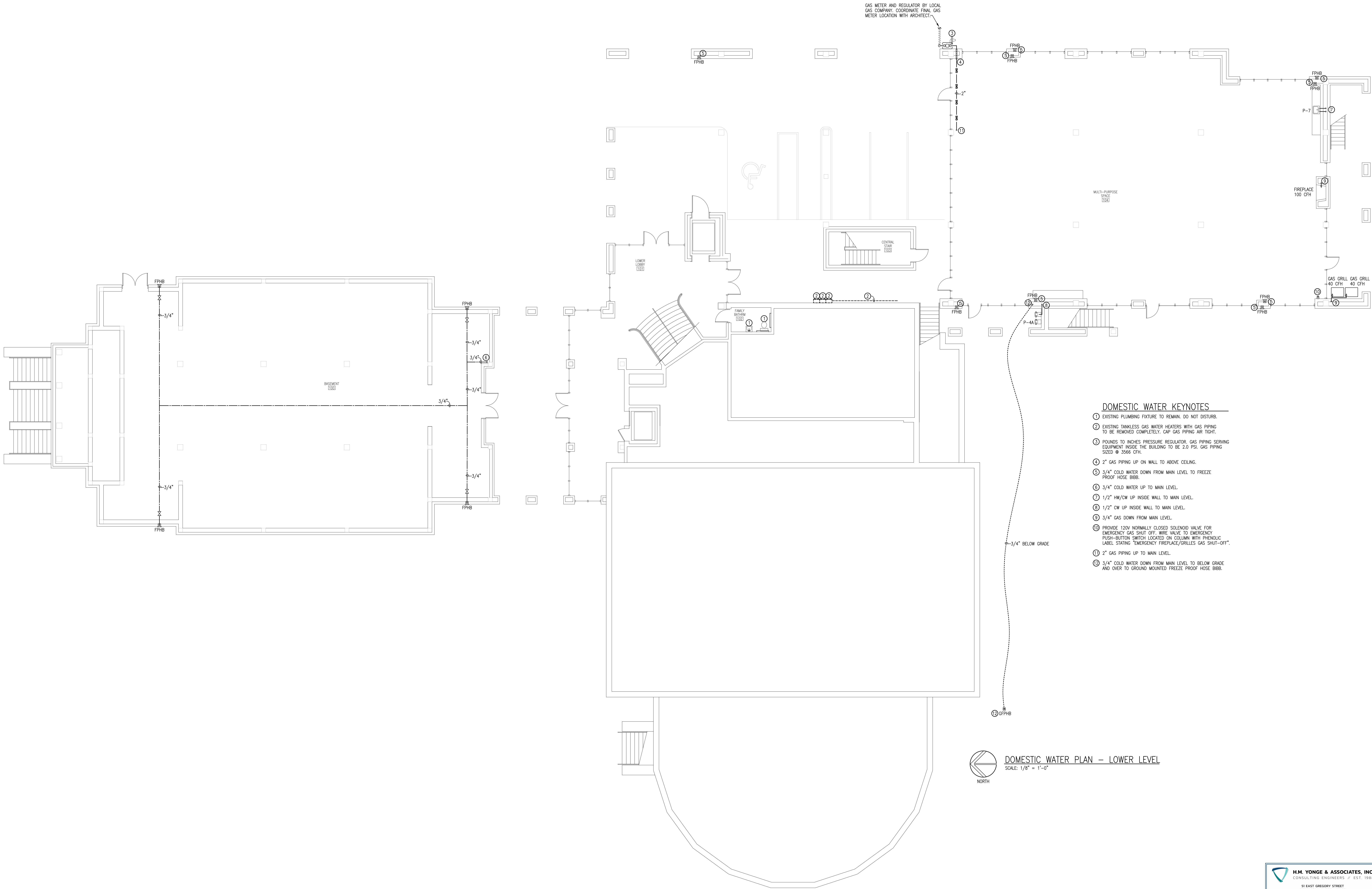
SCALE: 1/8" = 1'-0"

H.M. YONGE & ASSOCIATES, INC.
CONSULTING ENGINEERS • EST. 1988
51 EAST GREGORY STREET
PENSACOLA, FLORIDA 32502
PHONE: (850)433-2601
CERTIFICATION OF AUTHORIZATION No. 5254
MECHANICAL ENGINEER HARMON H. YONGE, P.E. FLORIDA REG. NO. 35093
ELECTRICAL ENGINEER ARUN T. YARGHSE, P.E. FLORIDA REG. NO. 7835Project
**FUMC
Port St. Joe
Rebuild**
Additions and Renovations

Port St. Joe, Florida

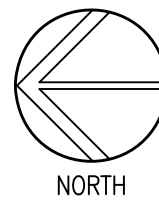
Date: 05-20-22
Project No. 1519
Sheet No. **P1.2**



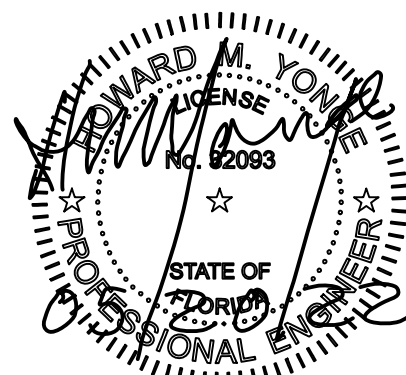


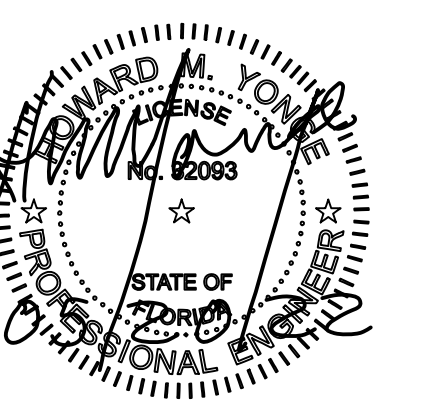
DOMESTIC WATER KEYNOTES

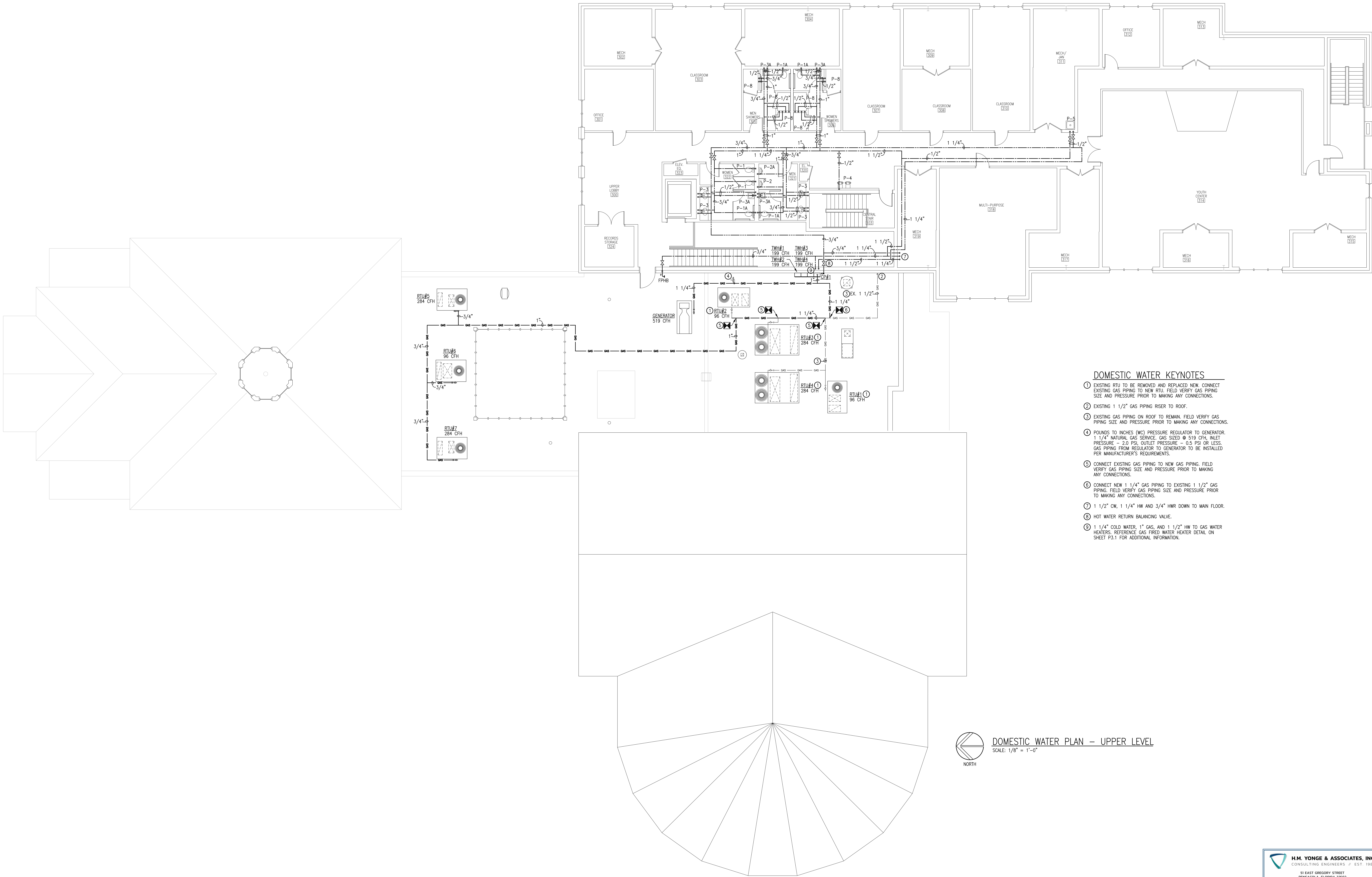
- EXISTING PLUMBING FIXTURE TO REMAIN. DO NOT DISTURB.
- EXISTING TANKLESS GAS WATER HEATERS WITH GAS PIPING TO BE REMOVED COMPLETELY. CAP GAS PIPING AIR TIGHT.
- POUNDS TO INCHES PRESSURE REGULATOR. GAS PIPING SERVING EQUIPMENT INSIDE THE BUILDING TO BE 2.0 PSI. GAS PIPING SIZED @ 3566 CFH.
- 2" GAS PIPING UP ON WALL TO ABOVE CEILING.
- 3/4" COLD WATER DOWN FROM MAIN LEVEL TO FREEZE PROOF HOSE BIBB.
- 3/4" COLD WATER UP TO MAIN LEVEL.
- 1/2" HW/CW UP INSIDE WALL TO MAIN LEVEL.
- 1/2" CW UP INSIDE WALL TO MAIN LEVEL.
- 3/4" GAS DOWN FROM MAIN LEVEL.
- PROVIDE 120V NORMALLY CLOSED SOLENOID VALVE FOR EMERGENCY GAS SHUT OFF. WIRE VALVE TO EMERGENCY PUSH-BUTTON SWITCH LOCATED ON COLUMN WITH PHENOLIC LABEL STATING "EMERGENCY FIREPLACE/GRILLES GAS SHUT-OFF".
- 2" GAS PIPING UP TO MAIN LEVEL.
- 3/4" COLD WATER DOWN FROM MAIN LEVEL TO BELOW GRADE AND OVER TO GROUND MOUNTED FREEZE PROOF HOSE BIBB.



DOMESTIC WATER PLAN - LOWER LEVEL
SCALE: 1/8" = 1'-0"

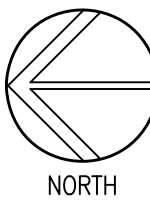




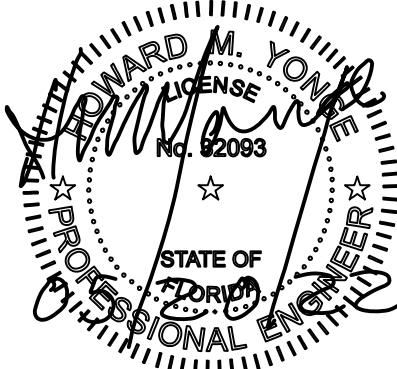


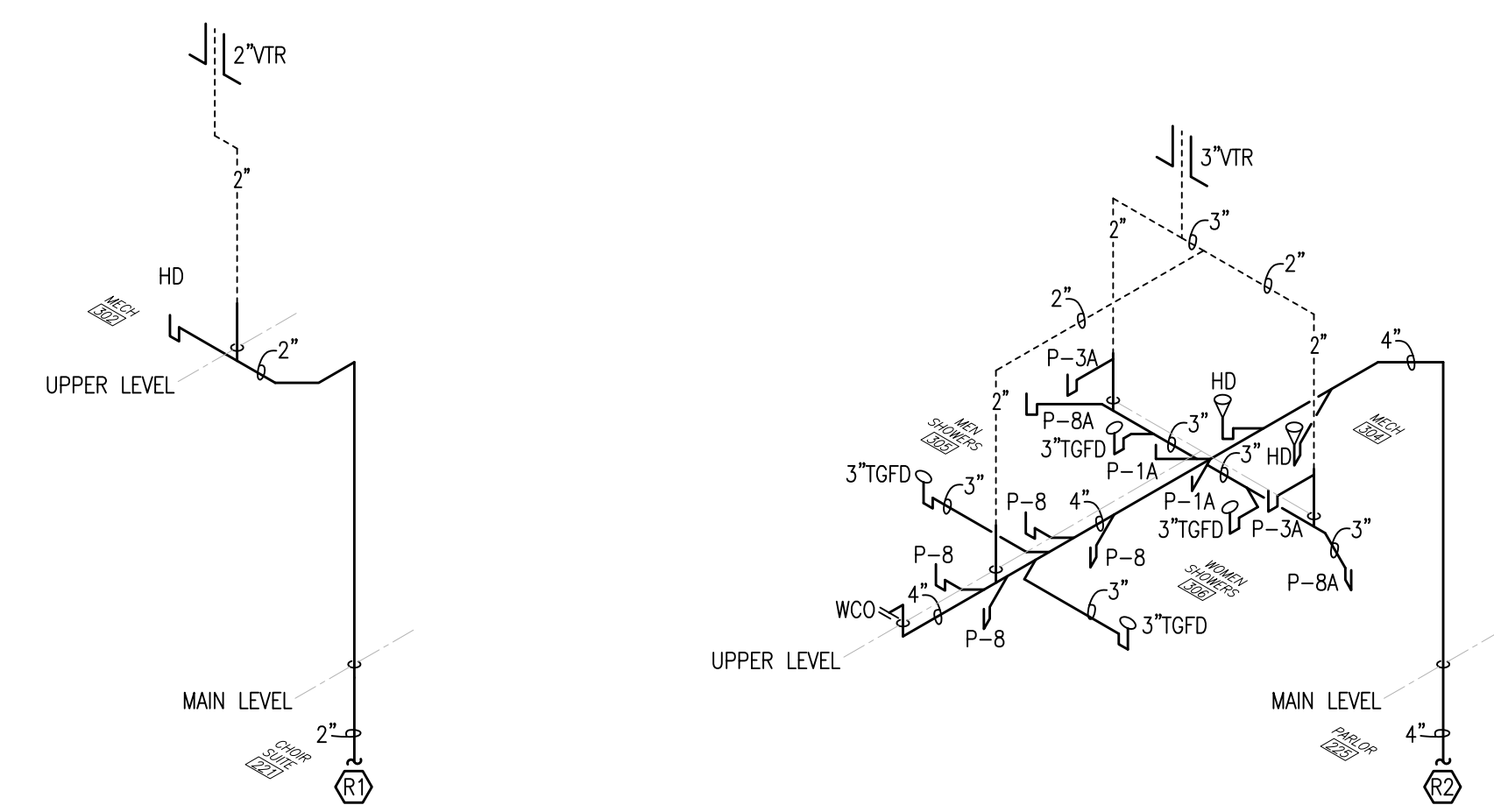
DOMESTIC WATER KEYNOTES

- EXISTING RTU TO BE REMOVED AND REPLACED NEW. CONNECT EXISTING GAS PIPING TO NEW RTU. FIELD VERIFY GAS PIPING SIZE AND PRESSURE PRIOR TO MAKING ANY CONNECTIONS.
- EXISTING 1 1/2\" GAS PIPING RISER TO ROOF.
- EXISTING GAS PIPING ON ROOF TO REMAIN. FIELD VERIFY GAS PIPING SIZE AND PRESSURE PRIOR TO MAKING ANY CONNECTIONS.
- POUNDS TO INCHES (W) PRESSURE REGULATOR TO GENERATOR. 1 1/4\" NATURAL GAS SERVICE. GAS SIZED @ 519 CFH, INLET PRESSURE = 2.0 PSI, OUTLET PRESSURE = 0.5 PSI OR LESS. GAS PIPING FROM REGULATOR TO GENERATOR TO BE INSTALLED PER MANUFACTURER'S REQUIREMENTS.
- CONNECT EXISTING GAS PIPING TO NEW GAS PIPING. FIELD VERIFY GAS PIPING SIZE AND PRESSURE PRIOR TO MAKING ANY CONNECTIONS.
- CONNECT NEW 1 1/4\" GAS PIPING TO EXISTING 1 1/2\" GAS PIPING. FIELD VERIFY GAS PIPING SIZE AND PRESSURE PRIOR TO MAKING ANY CONNECTIONS.
- 1 1/2\" CW, 1 1/4\" HW AND 3/4\" HWR DOWN TO MAIN FLOOR.
- HOT WATER RETURN BALANCING VALVE.
- 1 1/4\" COLD WATER, 1\" GAS, AND 1 1/2\" HW TO GAS WATER HEATERS. REFERENCE GAS FIRED WATER HEATER DETAIL ON SHEET P3.1 FOR ADDITIONAL INFORMATION.



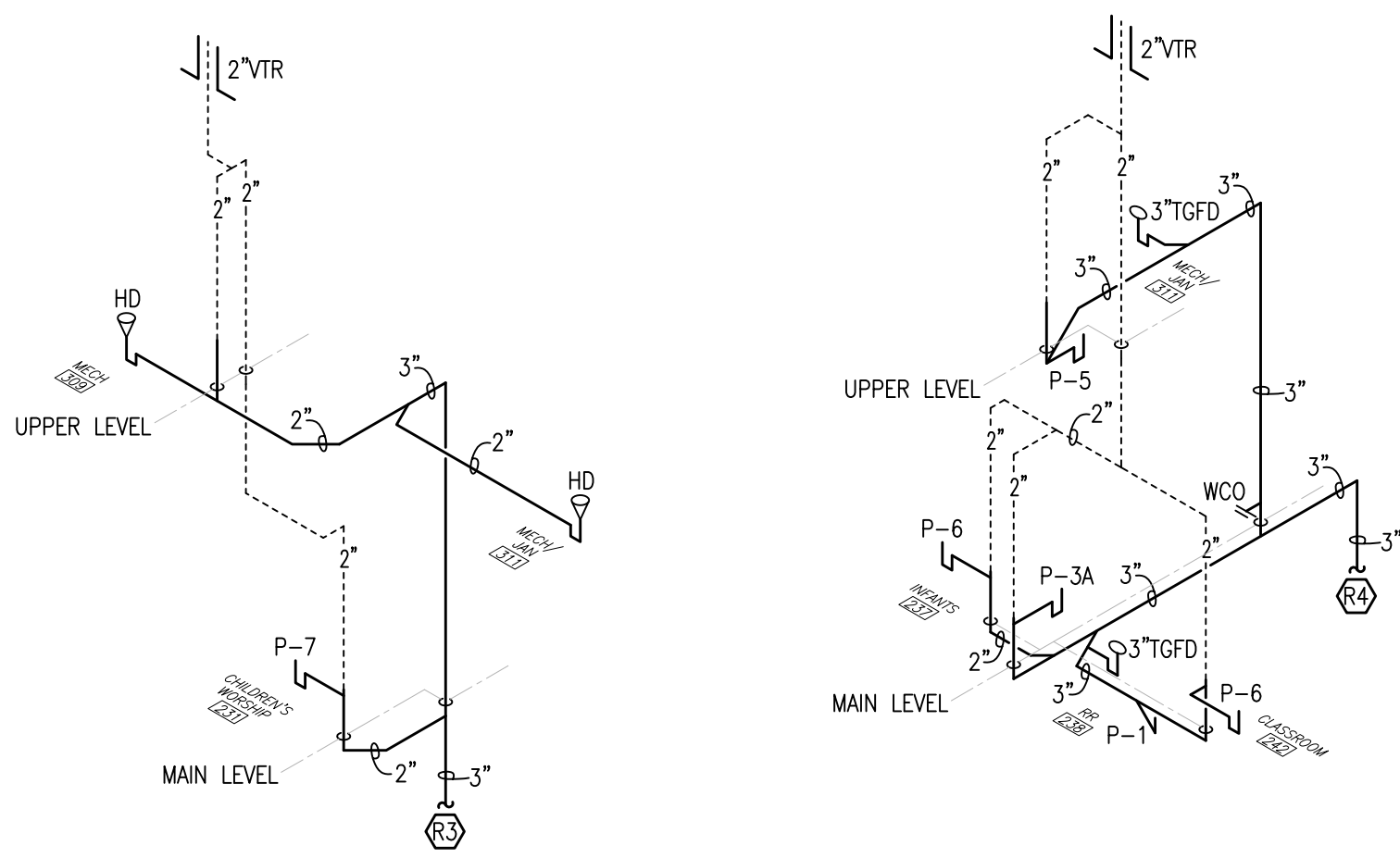
DOMESTIC WATER PLAN - UPPER LEVEL
SCALE: 1/8\" = 1'-0\"





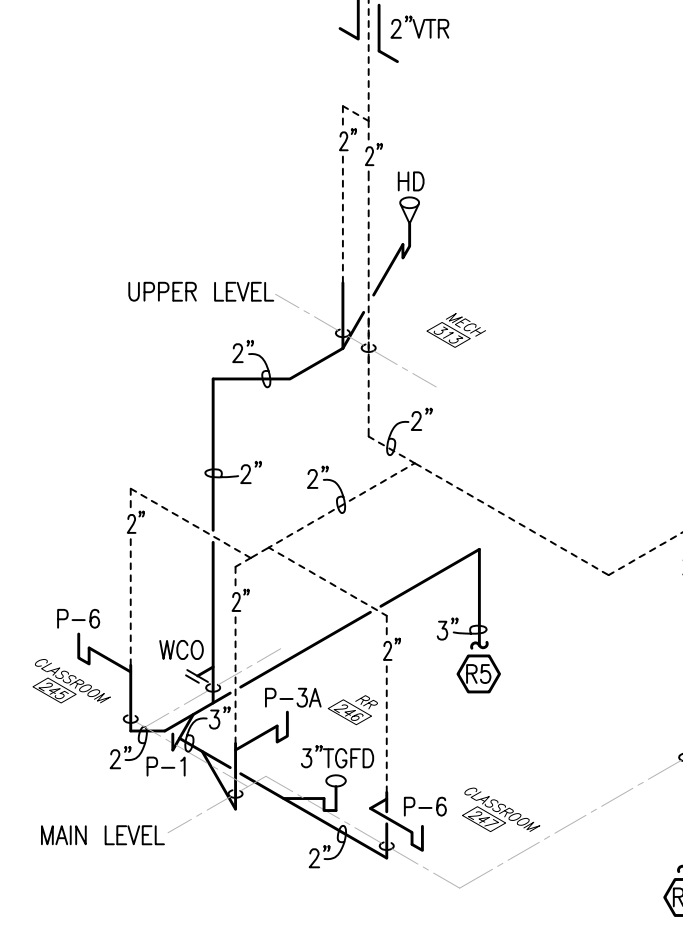
SANITARY WASTE RISER - R1
NOT TO SCALE

SANITARY WASTE RISER - R2
NOT TO SCALE

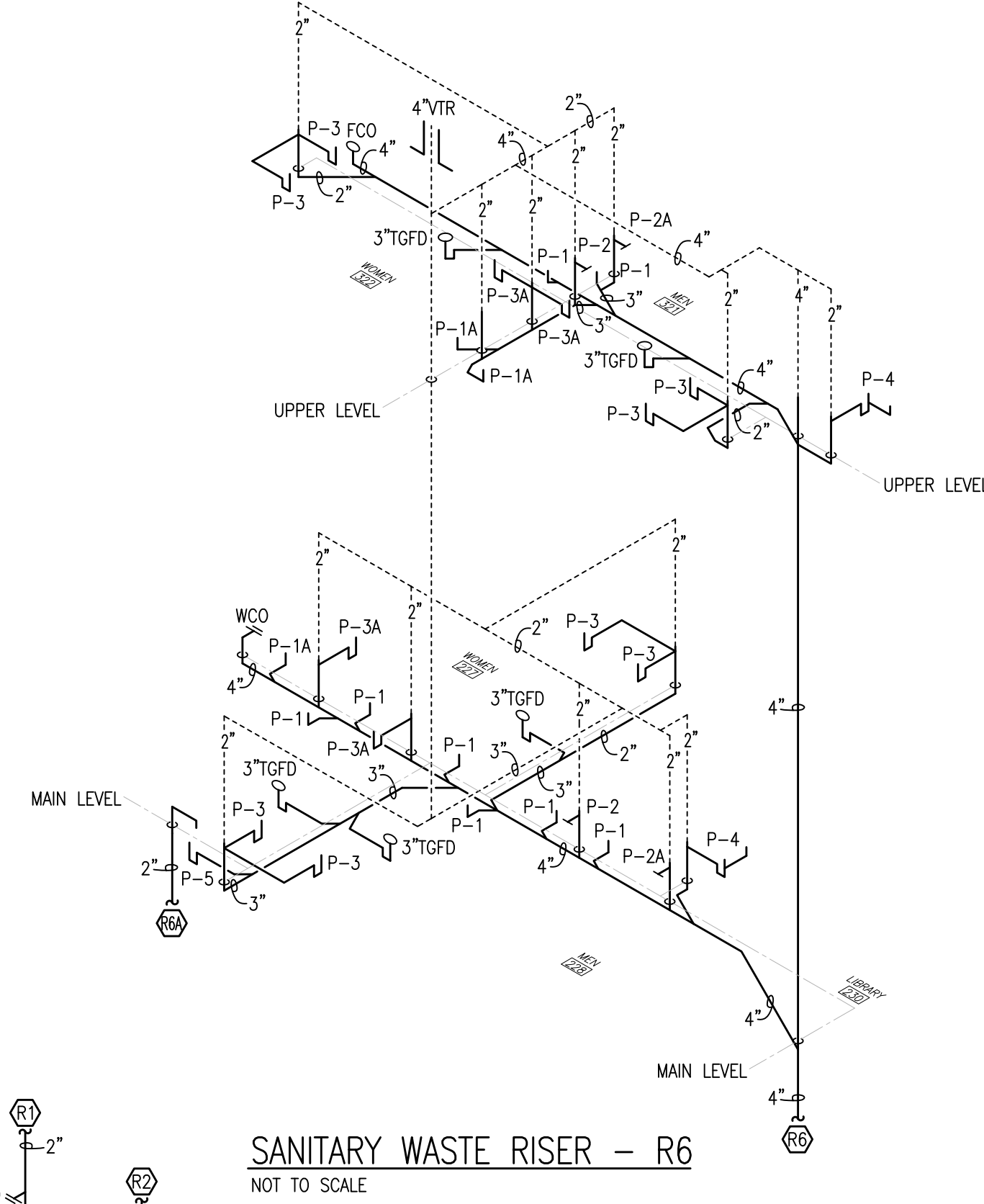


SANITARY WASTE RISER - R3
NOT TO SCALE

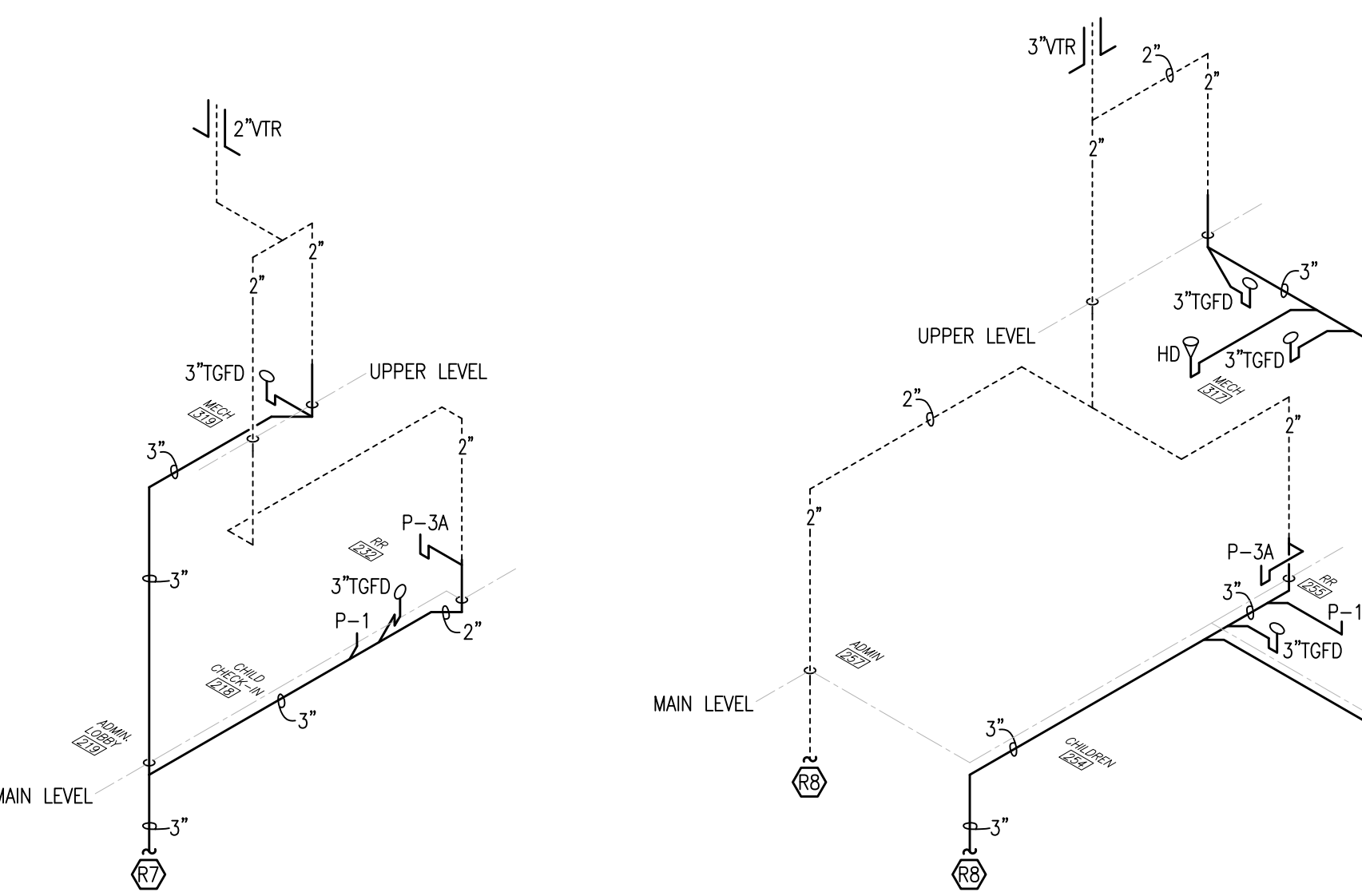
SANITARY WASTE RISER - R4
NOT TO SCALE



SANITARY WASTE RISER - R5
NOT TO SCALE

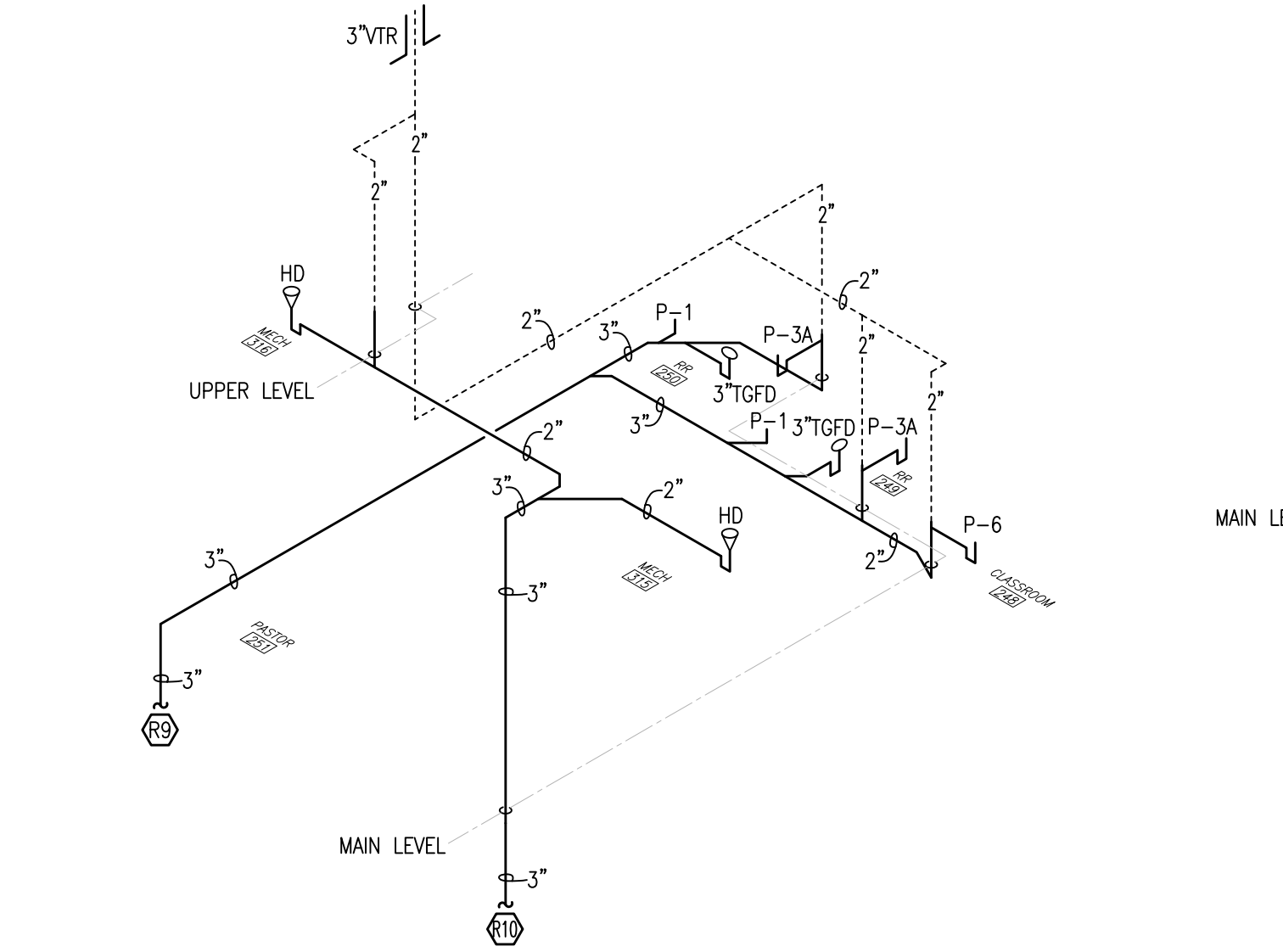


SANITARY WASTE RISER - R6
NOT TO SCALE

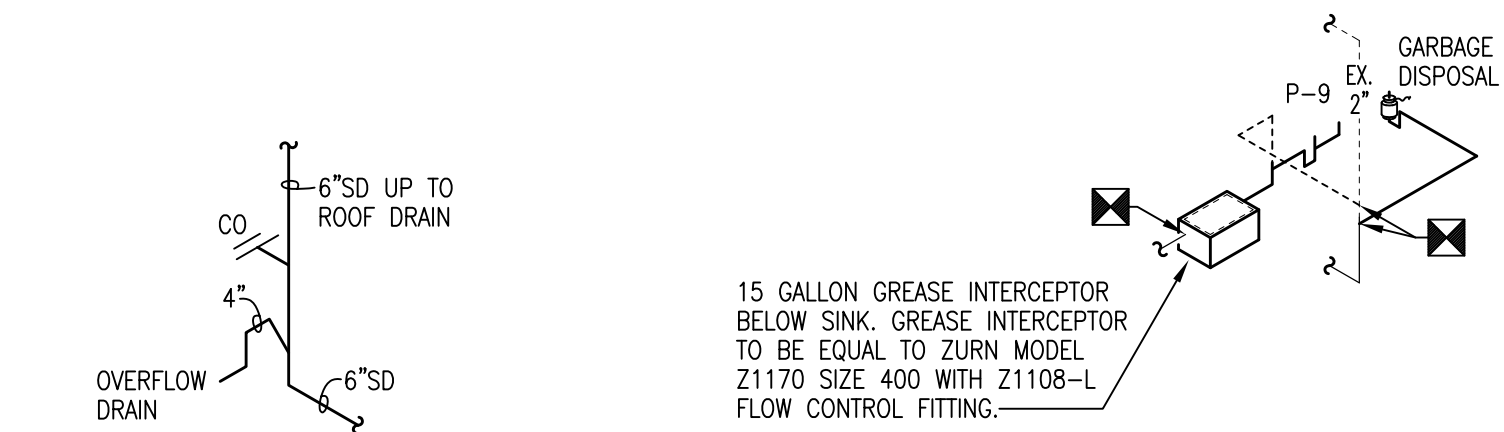


SANITARY WASTE RISER - R7
NOT TO SCALE

SANITARY WASTE RISER - R8
NOT TO SCALE



SANITARY WASTE RISER - R9 & R10
NOT TO SCALE



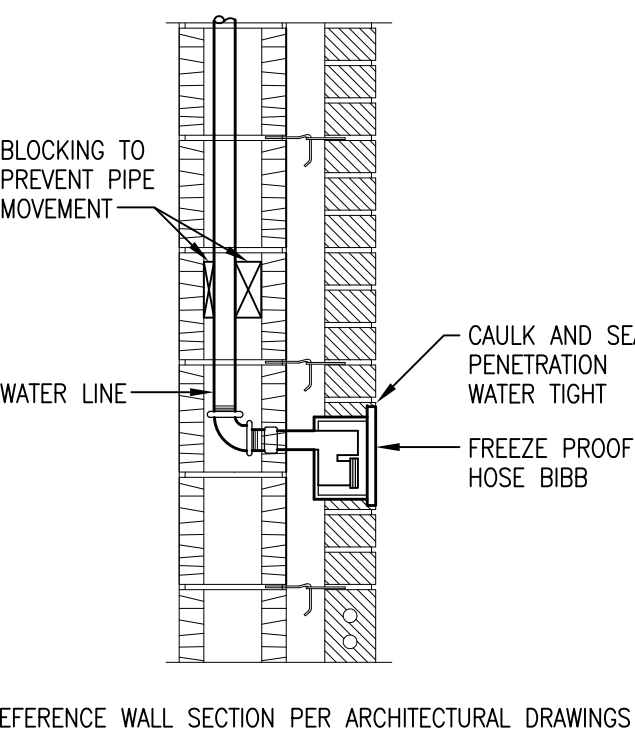
OVERFLOW DRAIN DETAIL
NOT TO SCALE

SANITARY WASTE RISER - KITCHEN
NOT TO SCALE

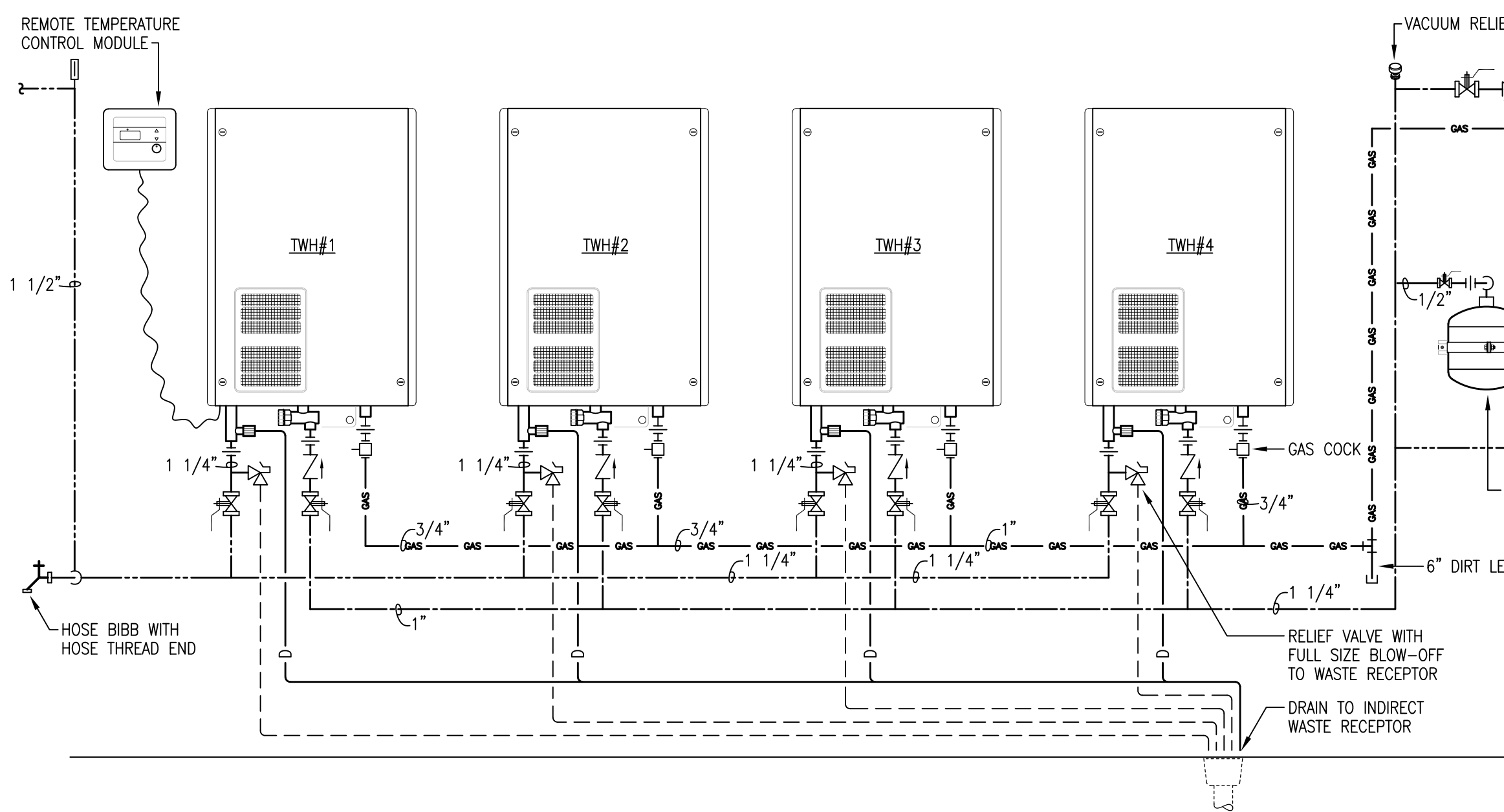
WT PRELOAD PSI	FIXTURE UNITS	P.D.I. SYMBOL
60	1-11	A
60	12-32	B
60	33-60	C

NOTE: WATER HAMMER ARRESTORS TO BE LOCATED ABOVE ELEVATION OF CEILING AND BE ACCESSIBLE THROUGH CEILING TILE IN AREAS WITHOUT CEILING ACCESS. PROVIDE 12"X12" ACCESS PANELS. ACCESS PANEL LOCATIONS TO BE COORDINATED WITH ARCHITECT AND APPROVED BY OWNER PRIOR TO INSTALLATION.

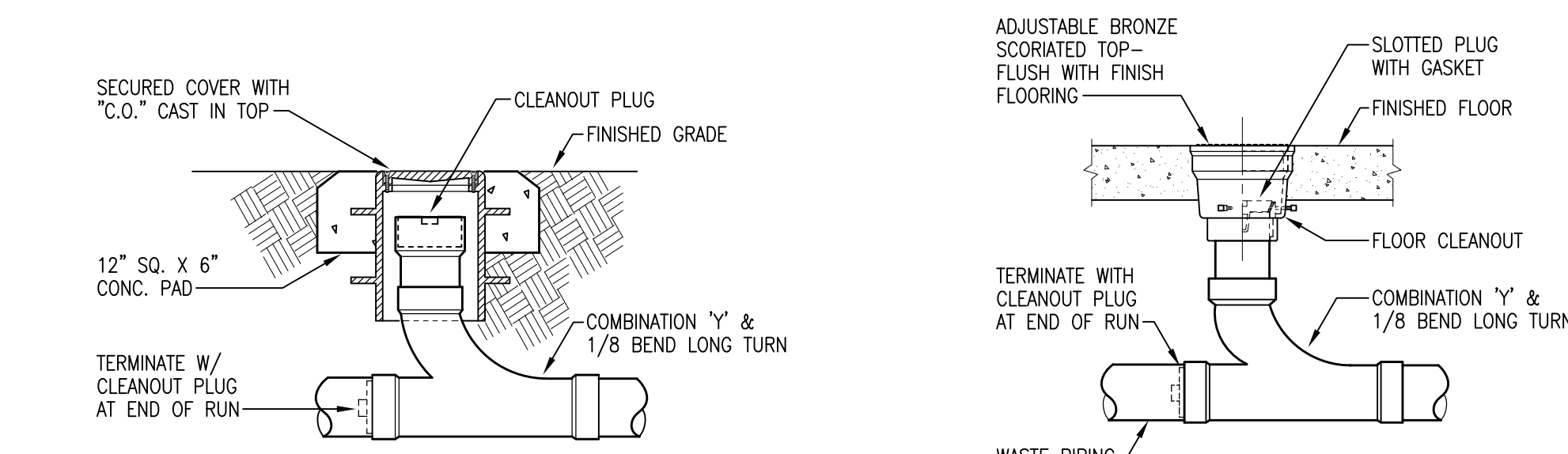
WATER HAMMER DETAIL
NOT TO SCALE



FREEZE PROOF HOSE BIBB DETAIL
NOT TO SCALE

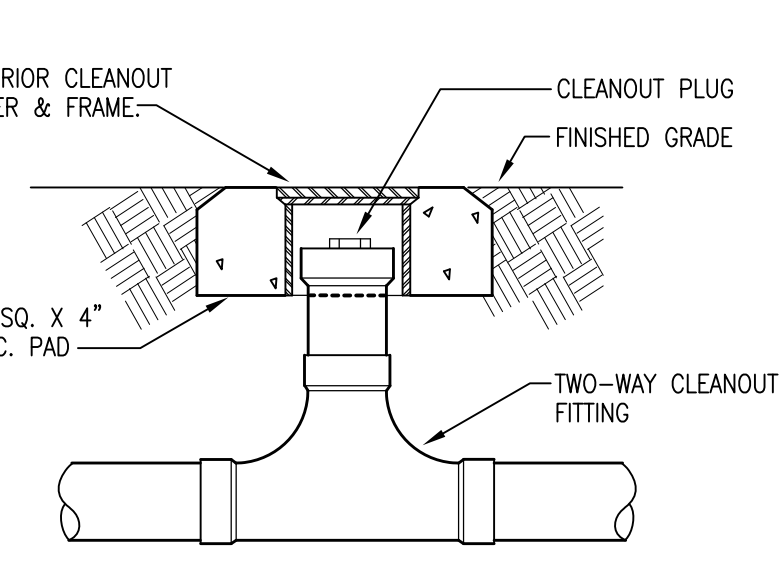


GAS FIRED TANKLESS WATER HEATER DETAIL
NOT TO SCALE

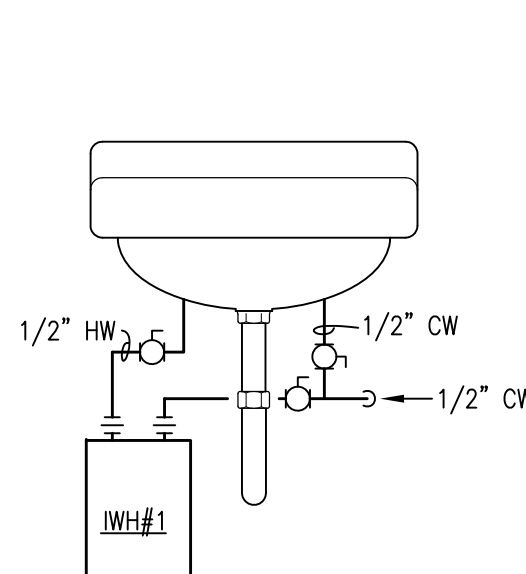


EXTERIOR CLEANOUT DETAIL
NOT TO SCALE

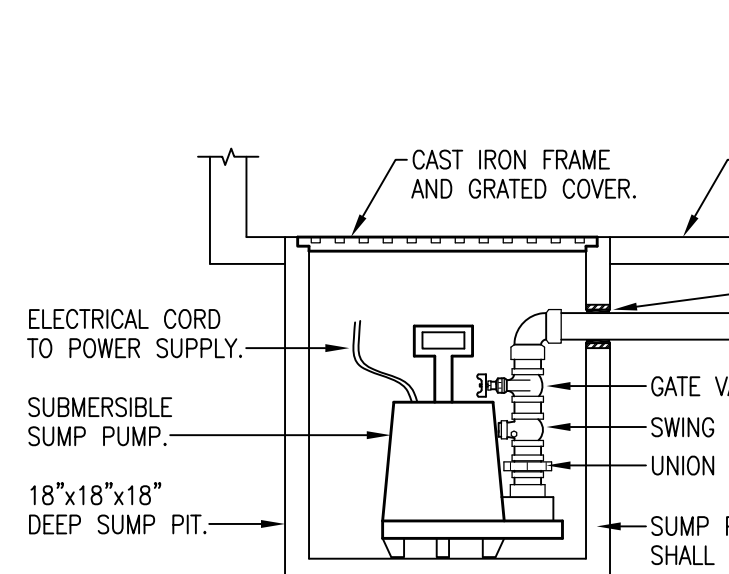
FLOOR CLEANOUT DETAIL
NOT TO SCALE



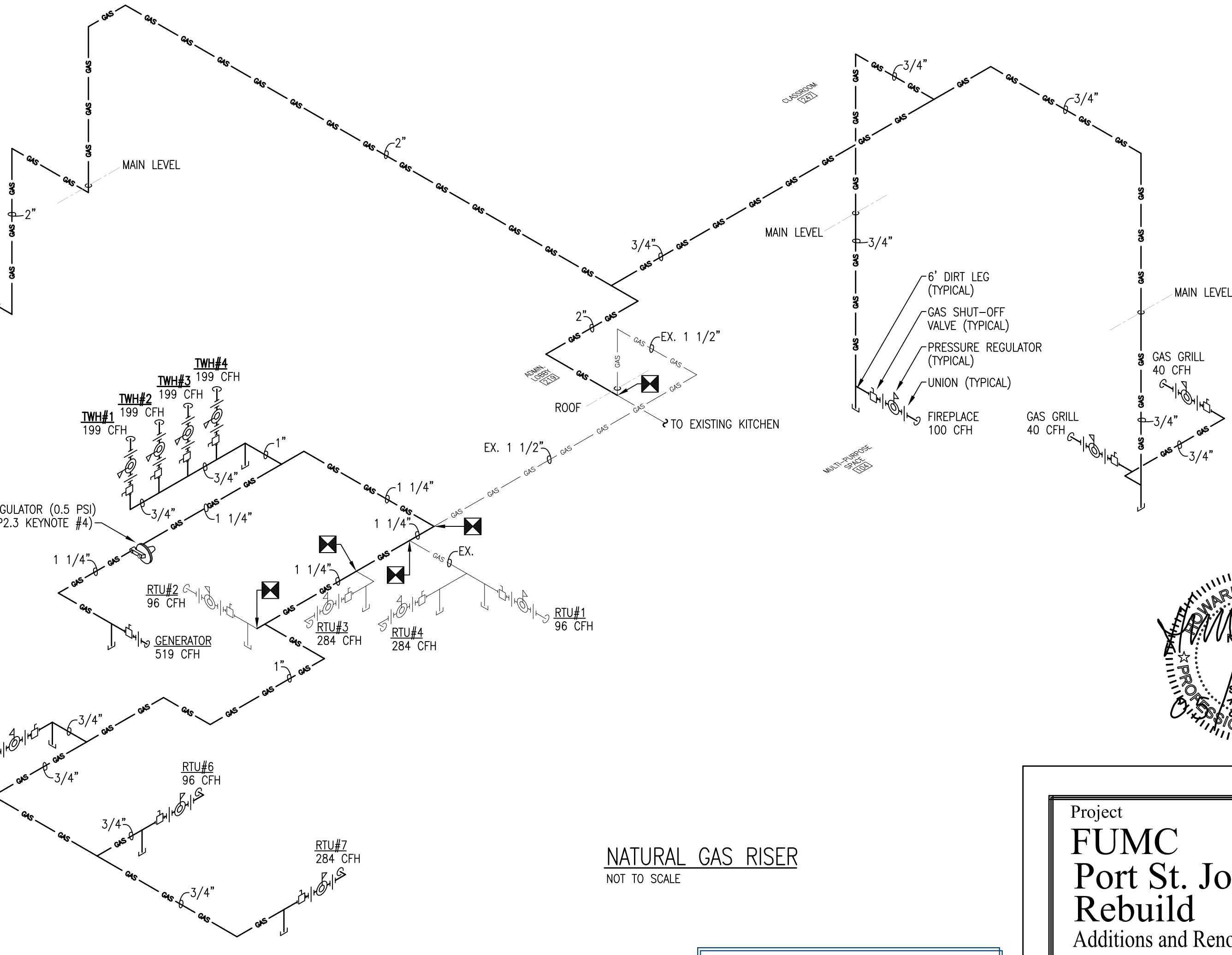
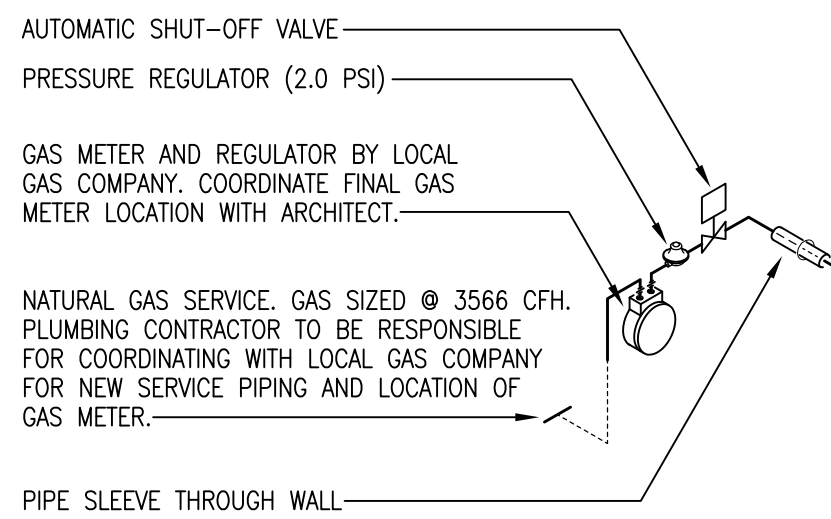
TWO-WAY CLEANOUT DETAIL
NOT TO SCALE



INSTANTANEOUS WATER HEATER DETAIL
NOT TO SCALE



SUMP PUMP PIT DETAIL
NOT TO SCALE



NATURAL GAS RISER
NOT TO SCALE

MARK	FIXTURE	CONNECTIONS			DESCRIPTION
		WASTE	CW	HW	
P-1	WATER CLOSET	3"	1 1/2"	---	18" HIGH ELONGATED BOWL, FLOOR MOUNTED, FLOOR OUTLET, FLUSH TANK TYPE. PROVIDE WHITE OPEN FRONT SEAT LESS COVER AND FLEXIBLE SUPPLY WITH STOP.
P-1A	WATER CLOSET (HANDICAPPED)	3"	1 1/2"	---	17" HIGH ELONGATED BOWL, FLOOR MOUNTED, FLOOR OUTLET, FLUSH TANK TYPE. PROVIDE WHITE OPEN FRONT SEAT LESS COVER, AND FLEXIBLE SUPPLY WITH STOP. INSTALL PER ADA REQUIREMENTS.
P-2	URINAL	2"	3/4"	---	WALL HUNG TYPE WITH FLUSH VALVE AND FLOOR MOUNTED CARRIER.
P-2A	URINAL (HANDICAPPED)	2"	3/4"	---	WALL HUNG TYPE WITH FLUSH VALVE AND FLOOR MOUNTED CARRIER. INSTALL PER ADA REQUIREMENTS.
P-3	LAVATORY	1 1/2"	1 1/2"	1 1/2"	20" OVAL SELF RIMMING COUNTER MOUNTED VITREOUS CHINA. PROVIDE WITH SINGLE LEVER FAUCET, GRID WASTE, 17 GA. P-TRAP, AND FLEXIBLE SUPPLIES WITH STOPS.
P-3A	LAVATORY (HANDICAPPED)	1 1/2"	1 1/2"	1 1/2"	WALL HUNG TYPE. PROVIDE WITH SINGLE FAUCET, GRID WASTE, 17 GA. P-TRAP, FLEXIBLE SUPPLIES WITH STOPS, TRAP INSULATION KIT, AND FLOOR MOUNTED CONCEALED ARM CARRIER. INSTALL PER ADA REQUIREMENTS.
P-4	WATER COOLER	1 1/2"	1 1/2"	---	DUAL HEIGHT WITH BOTTLE FILLING STATION, BARRIER FREE, WALL MOUNTED TYPE WITH ROUGH BRASS STOPS, 17 GA. P-TRAP, AND WALL HANGER. INSTALL PER ADA REQUIREMENTS.
P-4A	WATER COOLER (HANDICAPPED)	1 1/2"	1 1/2"	---	VANDAL RESISTANT, DUAL HEIGHT, FREEZE RESISTANT, BARRIER FREE, WALL MOUNTED TYPE WITH ROUGH BRASS STOPS, 17 GA. P-TRAP, AND WALL HANGER. INSTALL PER ADA REQUIREMENTS.
P-5	MOP SINK	3"	1 1/2"	1 1/2"	24"x24" TERRAZZO CORNER TYPE SERVICE BASIN WITH WALL MOUNTED SERVICE SINK FAUCET, VACUUM BREAKER, WALL BRACE, 3" STAINLESS STEEL DRAIN, AND STAINLESS STEEL RIM GUARD.
P-6	HAND SINK	1 1/2"	1 1/2"	1 1/2"	WALL HUNG TYPE. PROVIDE WITH SINGLE FAUCET, GRID WASTE, 17 GA. P-TRAP, FLEXIBLE SUPPLIES WITH STOPS, TRAP INSULATION KIT, AND FLOOR MOUNTED CONCEALED ARM CARRIER. INSTALL PER ADA REQUIREMENTS.
P-7	SINK	1 1/2"	1 1/2"	1 1/2"	21"x19"x7-1/2" DEEP, SINGLE COMPARTMENT STAINLESS STEEL SINK. PROVIDE WITH GOOSENECK FAUCET, WRIST BLADES, GRID STRAINER, 1 1/2" P-TRAP, AND FLEXIBLE SUPPLIES WITH STOPS.
P-8	SHOWER	2"	1 1/2"	1 1/2"	FIELD CONSTRUCTED TILE ENCLOSURE WITH PRESSURE BALANCED ANTI-SCALD SHOWER VALVE, SHOWER HEAD, COMMERCIAL GRADE CURTAIN AND CURTAIN ROD, AND 2" STAINLESS STEEL DRAIN WITH 4"x4" SQUARE STRAINER. INSTALL PER ADA REQUIREMENTS.
P-8A	SHOWER (HANDICAPPED)	2"	1 1/2"	1 1/2"	FIELD CONSTRUCTED TILE ENCLOSURE WITH PRESSURE BALANCED ANTI-SCALD SHOWER VALVE, HAND HELD SHOWER HEAD, GRAB BARS, SEAT, COMMERCIAL GRADE CURTAIN AND CURTAIN ROD, AND 2" STAINLESS STEEL DRAIN WITH 4"x4" SQUARE STRAINER. INSTALL PER ADA REQUIREMENTS.
P-9	3 COMPARTMENT SINK	2"	1 1/2"	1 1/2"	THREE COMPARTMENT STAINLESS STEEL SINK WITH RIGHT DRAINBOARD. PROVIDE WITH 16" SWING FAUCET, WRIST BLADES, THREE DRAINS WITH BASKET STRAINERS, 17 GA. P-TRAP, FLEXIBLE SUPPLIES WITH STOPS, AND GARBAGE DISPOSAL.

NOTE: FIXTURES SHALL BE WHITE AND FAUCETS SHALL BE POLISHED CHROME UNLESS OTHERWISE INDICATED. REFER TO SPECIFICATIONS FOR ADDITIONAL INFORMATION. ALL HANDICAPPED FIXTURES SHALL BE ADA COMPLIANT AND INSTALLED PER ADA REQUIREMENTS. REFERENCE ARCHITECTURAL PLANS FOR INSTALLATION HEIGHTS. ALL DOMESTIC WATER PIPING ABOVE THE SLAB SHALL BE INSULATED INCLUDING PIPING INSIDE WALLS. PIPING SHALL NOT BE INSTALLED IN A MANNER IN WHICH CONTACT WITH MASONRY PRODUCTS IS ALLOWED.

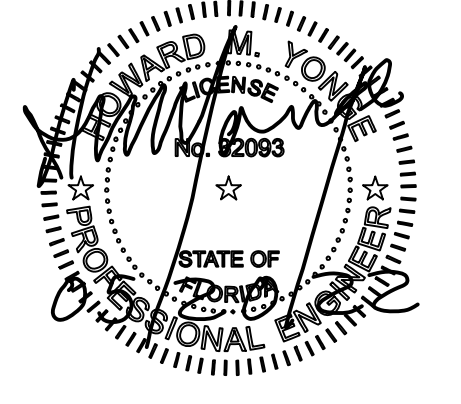
MARK	TEMPERATURE RISE @ D.B. GPM	ACTIVATION FLOW	OUTLET LWT	ELECTRICAL DATA				REMARKS
				VOLTS	Hz	PHASE	KW	
1	33°F	0.5 GPM	110°F	120	60	1	2.4	EQUAL TO EEMAX MODEL SP2412 WITH MICROPROCESSOR CONTROLS.
2	33°F	0.5 GPM	110°F	120	60	1	2.4	EQUAL TO EEMAX MODEL SP2412 WITH MICROPROCESSOR CONTROLS.

MARK	TWH#	MINIMUM GAS INPUT BTU/Hr	MAXIMUM GAS INPUT BTU/Hr	GPM @ 35° RISE	ELECTRICAL DATA				REMARKS
					VOLTS	Hz	PHASE	KW	
1	15,200	199,000	0.4 - 9.8	120	60	1			EQUAL TO RINNAI RL944N WITH MCC-91 CONTROLLER AND RECESSED BOX AND ASSOCIATED PIPE COVERS. COORDINATE CONTROLLER LOCATION WITH OWNER. SET FOR 120° TEMPERATURE.
2	15,200	199,000	0.4 - 9.8	120	60	1			EQUAL TO RINNAI RL944N WITH MCC-91 CONTROLLER AND RECESSED BOX AND ASSOCIATED PIPE COVERS. COORDINATE CONTROLLER LOCATION WITH OWNER. SET FOR 120° TEMPERATURE.
3	15,200	199,000	0.4 - 9.8	120	60	1			EQUAL TO RINNAI RL944N WITH MCC-91 CONTROLLER AND RECESSED BOX AND ASSOCIATED PIPE COVERS. COORDINATE CONTROLLER LOCATION WITH OWNER. SET FOR 120° TEMPERATURE.
4	15,200	199,000	0.4 - 9.8	120	60	1			EQUAL TO RINNAI RL944N WITH MCC-91 CONTROLLER AND RECESSED BOX AND ASSOCIATED PIPE COVERS. COORDINATE CONTROLLER LOCATION WITH OWNER. SET FOR 120° TEMPERATURE.

Quina Grundhoefer Architects

400 West Romana Street Pensacola, FL 32502
850 433-5575 Fax 850 433-5366
E-mail: qg@qgarchitects.com

PLUMBING LEGEND	
AAV	AIR ADMITTANCE VALVE
AFV	ABOVE FINISHED FLOOR
CP	CIRCULATING PUMP
CW	COLD WATER
ECO	EXTERIOR CLEANOUT
EX	EXISTING
FCO	FLOOR CLEANOUT
FPHB	FREEZE PROOF HOSE BIBB
FS	FLOOR SINK
GFFPHB	GROUND FREEZE PROOF HOSE BIBB
HD	HUB DRAIN WITH TRAP GUARD
HW	HOT WATER
HWR	HOT WATER RETURN
KHB	KITCHEN HOSE BIBB
RD	ROOF DRAIN
SD	STORM DRAIN
TGFD	TRAP GUARD FLOOR DRAIN
WCO	WALL CLEANOUT
WH	WATER HEATER
VTR	VENT THRU ROOF
----	COLD WATER PIPING
----	GREASE WASTE PIPING
----	HOT WATER PIPING
----	HOT WATER RETURN PIPING
----	WASTE PIPING
----	VENT PIPING
⊗	BALL VALVE
⊠	CONNECT NEW TO EXISTING
└─┘	P-TRAP
└─┘	VENT THRU ROOF



Project
FUMC
Port St. Joe
Rebuild
Additions and Renovations
Port St. Joe, Florida
Date: 05-20-22
Project No. 1519
Sheet No. **P3.1**

H.M. YONGE & ASSOCIATES, INC.
CONSULTING ENGINEERS • EST. 1988
51 EAST GREGORY STREET
PENSACOLA, FLORIDA 32502
PHONE (850)435-2601
MECHANICAL ENGINEER: H.M. YONGE, P.E. FLORIDA REG. NO. 35093
ELECTRICAL ENGINEER: ANJUN T. YARGUES, P.E. FLORIDA REG. NO. 7935