



[illegible]

[illegible]

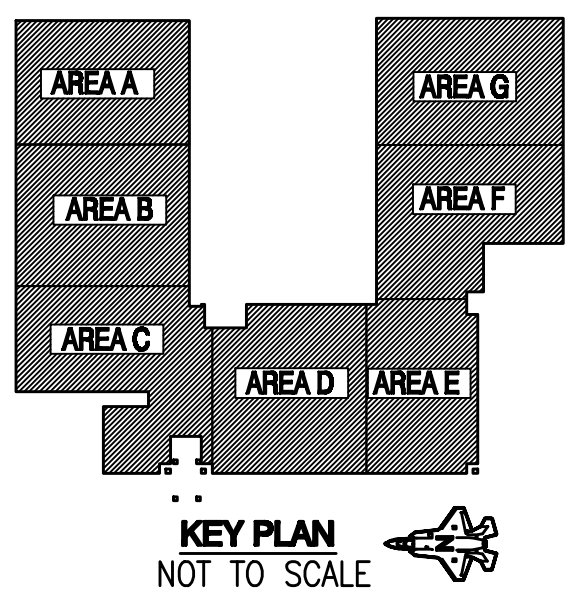
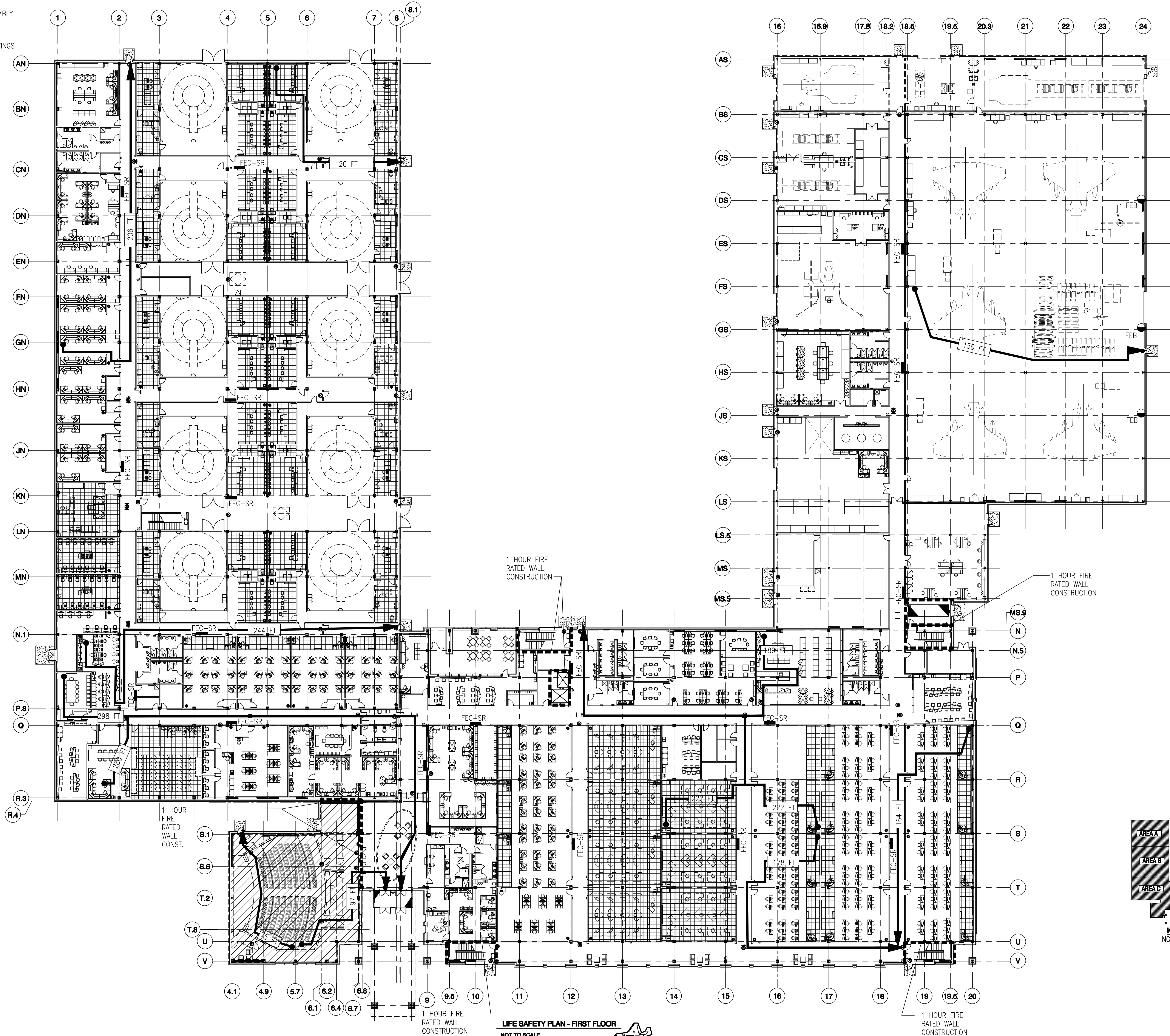
U.S. ARMY ENGINEER DISTRICT CORPS OF ENGINEERS MOBILE, ALABAMA	Drawn By: L. FOSTER	Checked By: J. REHAK	15.0. Sheet File Name: A003EB45.DWG	File No.	JUL 7, 2008
		Reviewed By: K. FRANCIS	Solicitation Number: URGC-08-0006		

USF ACADEMIC TRAINING CENTER (ATC)  
PROJECT NO. FTFA083950  
**AS-BUILT**  
LIFE SAFETY PLAN  
FIRST FLOOR

A-003

FIRE EXTINGUISHER LEGEND	
	FIRE EXTINGUISHER ON MOUNTING BRACKET
	FIRE EXTINGUISHER INSIDE SEMI-RECESSED CABINET

1. REFERENCE DRAWING A-002 FOR BUILDING CODE AND LIFE SAFETY CRITERIA.
2. REFERENCE SPECIFICATION SECTION 104416  
FIRE-PROTECTION SPECIALTIES FOR FIRE EXTINGUISHERS,  
FIRE-RATED AND NON-FIRE RATED FIRE EXTINGUISHER CABINETS,  
AND VALVE CABINETS.
3. FIRE EXTINGUISHER AND CABINET LOCATIONS SUBJECT TO  
CHANGE TO ACCOMMODATE FURNITURE AND COMPLY WITH CODE  
REQUIREMENTS.



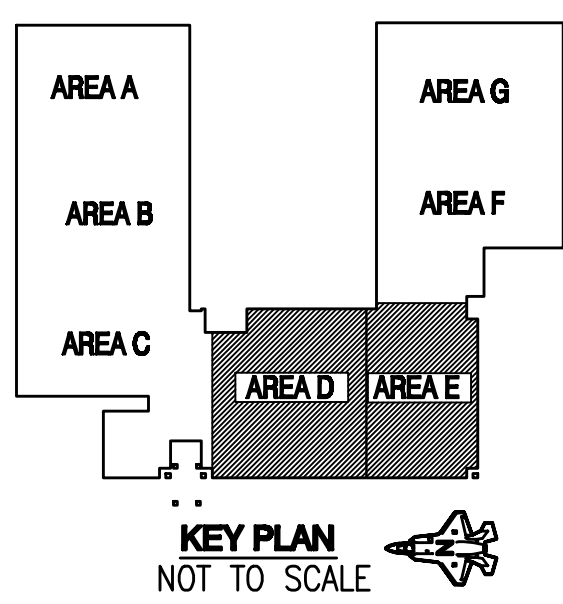


[illegible]

U.S. ARMY ENGINEER DISTRICT CORPS OF ENGINEERS MOBILE, ALABAMA	Designed By: K. FRANCIS	Date: JULY, 2008
	Drawn By: L. FOSTER	File No. —
	Checked By: J. REHAK	I.S.O. Sheet File Name: A004EB45.DWG
BURNS & McDONNELL 9400 WARD PARKWAY KANSAS CITY, MISSOURI	Reviewed By: K. FRANCIS	Solicitation Number: URGC-08-0006

EGLIN AIR FORCE BASE, FLORIDA  
USF ACADEMIC TRAINING CENTER (ATC)  
PROJECT NO. FTF A083950  
**AS-BUILT**  
LIFE SAFETY PLAN  
SECOND FLOOR

Sheet  
Reference  
Number:  
  
A-004



ROOM DESIGNATIONS BASE BID

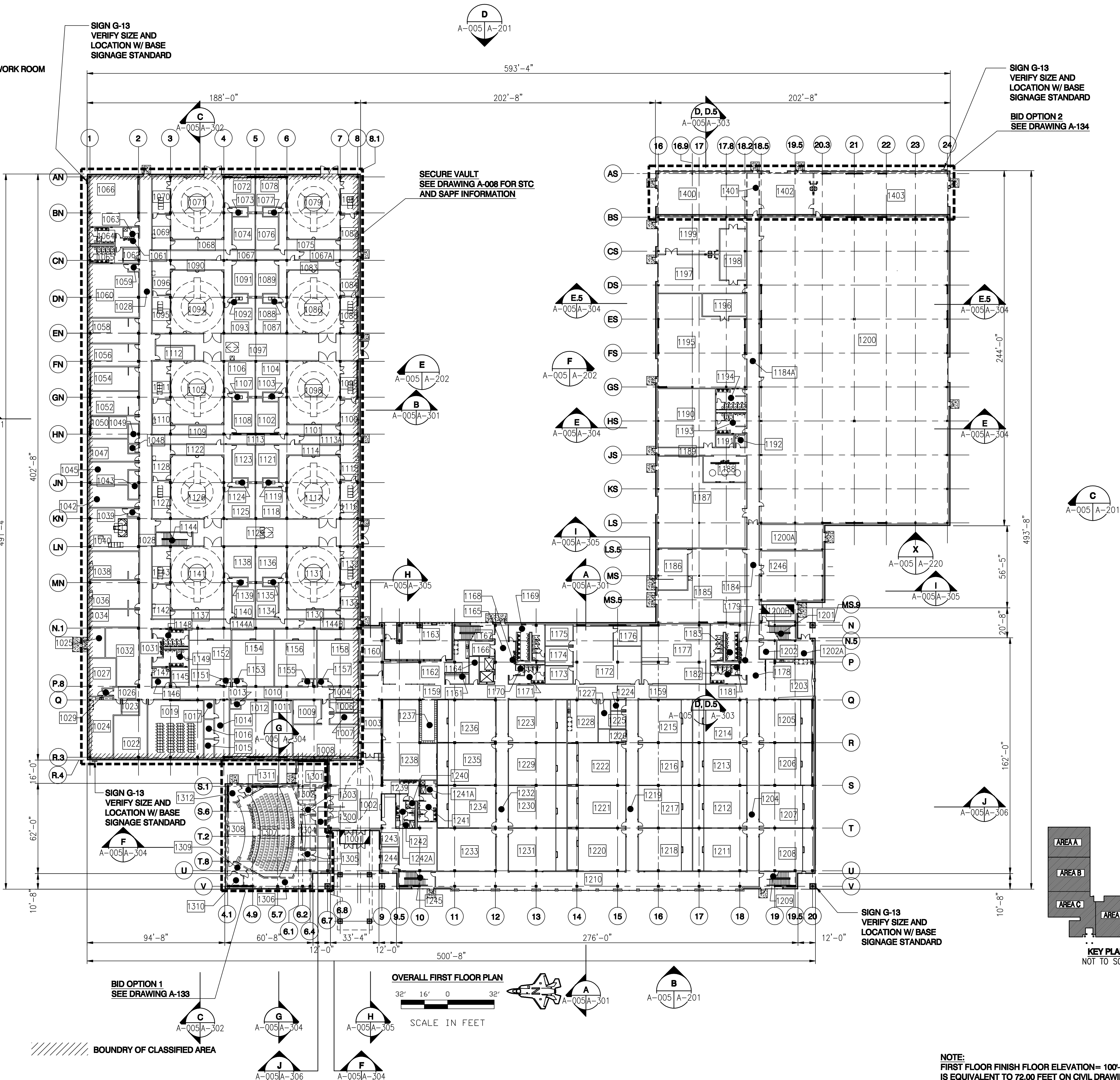
1001	ENTRY VESTIBULE	1087	DEBRIEFING ROOM	1174	LRC CONFERENCE ROOM
1002	LOBBY	1088	SERVER	1175	LRC CONFERENCE ROOM
1003	CORRIDOR	1089	BRIEFING ROOM	1176	LRC CONFERENCE ROOM
1004	SECURITY VESTIBULE	1090	HALL	1177	TRAINING LIBRARY
1006	SECURITY CONTROL ROOM	1091	BRIEFING ROOM	1178	CORRIDOR
1007	SUPPLY	1092	SERVER	1179	ALCOVE
1008	SECURITY OPEN OFFICE	1093	DEBRIEFING ROOM	1180	NOT USED
1009	SECURITY CONFERENCE ROOM	1094	FMS POD	1181	JANITOR
1010	CORRIDOR	1095	SERVER ROOM	1182	WOMEN'S TOILET
1011	SECURITY DOCUMENT PROCESSING	1096	IOS ROOM	1183	MEN'S TOILET
1012	PILOT ICW CLASSROOM	1097	CORRIDOR	1184	CORRIDOR
1013	MAN-TRAP	1098	FMS POD	1184A	CORRIDOR
1014	LEARNING RESOURCE CENTER	1099	SERVER ROOM	1185	MECHANICAL ROOM
1015	LRC - LAB 1	1100	IOS ROOM	1186	ELECTRICAL ROOM
1016	LRC - LAB 2	1101	HALL	1187	LOADING DOCK / WAREHOUSE
1017	LRC - LAB 3	1102	BRIEFING ROOM	1188	WASHROOM
1018	NOT USED	1103	SERVER	1189	CORRIDOR
1019	DATA CENTER	1104	DEBRIEFING ROOM	1190	TD REPAIR / STORAGE
1020	NOT USED	1105	FMS POD	1191	SHARED GOV'T COMM AND DIST. NETWORK ROOM
1021	NOT USED	1106	DEBRIEFING ROOM	1192	JANITOR
1022	MP REHEARSAL	1107	SERVER	1193	MEN'S TOILET
1023	SECURITY EQUIPMENT ROOM	1108	BRIEFING ROOM	1194	WOMEN'S TOILET
1024	CLASSIFIED BREAK ROOM	1109	HALL	1195	EJECTION SEAT MAINT. TRAINING
1025	MAIN TELEPHONE ROOM	1110	IOS ROOM	1196	EJECTION SEAT TRAINING ROOM
1026	HALL	1111	SERVER ROOM	1197	PW HANDS-ON
1027	CLASSIFIED CONFERENCE ROOM	1112	PATCH PANEL ROOM	1198	SHARED STORAGE ROOM
1027A	NOT USED	1113	CORRIDOR	1199	FET HANDS-ON
1028	CORRIDOR	1113A	CORRIDOR	1200	WEAPONS LOADING TRAINING / STOR.
1028A	NOT USED	1114	HALL	1200A	MECHANICAL ROOM
1029	MAN-TRAP	1115	IOS ROOM	1200B	VESTIBULE
1030	NOT USED	1116	SERVER ROOM	1201	STAIR
1031	ALCOVE	1117	FMS POD	1202	ELECTRICAL ROOM
1032	TSSC CM LIBRARY	1118	DEBRIEFING ROOM	1202A	FIRE PUMP ROOM
1033	NOT USED	1119	SERVER	1203	MAINTAINER STUDENT BREAK ROOM
1034	CPI	1120	NOT USED	1204	CORRIDOR
1035	NOT USED	1121	BRIEFING ROOM	1205	Mx EML/ICW CLASSROOM
1036	DBGS	1122	HALL	1206	Mx EML/ICW CLASSROOM
1037	NOT USED	1123	BRIEFING ROOM	1207	Mx EML/ICW CLASSROOM
1038	DBGS	1124	SERVER	1208	Mx EML/ICW CLASSROOM
1039	MAN-TRAP	1125	DEBRIEFING ROOM	1209	STAIR
1040	TSSC SDC	1126	FMS POD	1210	CORRIDOR
1041	NOT USED	1127	SERVER ROOM	1211	Mx EML/ICW CLASSROOM
1042	TSSC SDE	1128	IOS ROOM	1212	Mx EML/ICW CLASSROOM
1043	ELECTRICAL	1129	CORRIDOR	1213	Mx EML/ICW CLASSROOM
1044	NOT USED	1130	HALL	1214	Mx EML/ICW CLASSROOM
1045	TSSC SDE	1131	FMS POD	1215	FUTURE CLASSROOM
1046	NOT USED	1132	SERVER ROOM	1216	Mx EML/ICW CLASSROOM
1047	TSSC SDE	1133	IOS ROOM	1217	Mx EML/ICW CLASSROOM
1048	GOVERNMENT COMM.	1134	BRIEFING ROOM	1218	Mx EML/ICW CLASSROOM
1049	DISTRIBUTED NETWORK ROOM	1135	SERVER	1219	CORRIDOR
1050	TSSC SDE	1136	DEBRIEFING ROOM	1220	ASMT CLASSROOM
1051	NOT USED	1137	HALL	1221	ASMT CLASSROOM
1052	TSSC DEVELOPER	1138	DEBRIEFING ROOM	1222	ASMT CLASSROOM
1053	NOT USED	1139	SERVER	1223	ASMT CLASSROOM
1054	TSSC DEVELOPER	1140	BRIEFING ROOM	1224	ELECTRICAL ROOM
1055	NOT USED	1141	FMS POD	1225	COMMUNICATIONS ROOM
1056	TSSC DEVELOPER	1142	IOS ROOM	1226	STORAGE
1057	NOT USED	1143	SERVER ROOM	1227	DISTRIBUTED NETWORK ROOM
1058	TSSC DEV. BUILD ROOM	1144	STAIR	1228	PILOT STUDENT BREAK ROOM
1059	MAN-TRAP	1144A	CORRIDOR	1229	ASMT CLASSROOM
1060	ISSM / ISSO	1144B	CORRIDOR	1230	ASMT CLASSROOM
1061	HALL	1145	DISTRIBUTED NETWORK ROOM	1231	ASMT CLASSROOM
1062	GOVERNMENT COMM.	1146	GOVERNMENT COMM.	1232	CORRIDOR
1063	JANITOR	1147	JANITOR	1233	PILOT ICW CLASSROOM
1064	MEN'S TOILET	1148	WOMEN'S TOILET	1234	PILOT EML CLASSROOM
1064A	NOT USED	1149	MEN'S TOILET	1235	PILOT EML CLASSROOM
1065	WOMEN'S TOILET	1150	NOT USED	1236	PILOT EML CLASSROOM
1066	FM REPAIR / STORAGE	1151	MAN-TRAP	1237	LOCKERS
1067	CORRIDOR	1152	PILOT EML CLASSROOM	1238	SCHEDULING
1067A	CORRIDOR	1153	MAN-TRAP	1239	CORRIDOR
1068	HALL	1154	PILOT EML CLASSROOM	1240	JANITOR
1069	IOS ROOM	1155	MAN-TRAP	1241	MEN'S TOILET
1070	SERVER ROOM	1156	PILOT EML CLASSROOM	1241A	SHOWER
1071	FMS POD	1157	MAN-TRAP	1242	WOMEN'S TOILET
1072	DEBRIEFING ROOM	1158	PILOT EML CLASSROOM	1242A	SHOWER
1073	SERVER	1159	CORRIDOR	1243	SECURITY
1074	BRIEFING ROOM	1160	FLIGHT EQUIPMENT ROOM	1244	SECURITY OFFICE
1075	HALL	1161	MAILROOM	1245	STAIR
1076	BRIEFING ROOM	1162	COMMON BREAK RM / VEND	1246	OML TRAINING
1077	SERVER	1163	COVERED PATIO		
1078	DEBRIEFING ROOM	1164	ELEVATOR EQUIPMENT ROOM		
1079	FMS POD	1165	CORRIDOR		
1080	NOT USED	1166	STORAGE		
1081	SERVER ROOM	1167	STAIR		
1082	IOS ROOM	1168	ALCOVE		
1083	HALL	1169	MEN'S TOILET		
1084	IOS ROOM	1170	JANITOR		
1085	SERVER ROOM	1171	WOMEN'S TOILET		
1086	FMS POD	1172	LEARNING RESOURCE CENTER		
		1173	LRC CONFERENCE ROOM		

ROOM DESIGNATIONS BID OPTION 1

1300	AUDITORIUM LOBBY
1301	MECHANICAL ROOM
1302	ELECTRICAL
1303	VESTIBULE
1304	CONTROL ROOM
1305	VESTIBULE
1306	HALL
1307	AUDITORIUM
1308	STAGE
1309	VESTIBULE
1310	GREEN ROOM
1311	STORAGE
1312	VESTIBULE

ROOM DESIGNATIONS BID OPTION 2

1400	LDG
1401	CORRIDOR
1402	BORESCOPE
1403	ENGINE REMOVAL
1500	NOT USED
1501	NOT USED
1502	NOT USED
1503	NOT USED



US Army Corps of Engineers  
Mobile District

Revisions	Description	Date	Approved

Date: JULY, 2008

Designed By: K. FRANCIS

Drawn By: L. FOSTER

Checked By: J. REHAK

Reviewed By: K. FRANCIS

U.S. ARMY ENGINEER DISTRICT  
CORPS OF ENGINEERS  
MOBILE, ALABAMA

BURNS & MCDONNELL  
9400 WARD PARKWAY  
KANSAAS CITY, MISSOURI

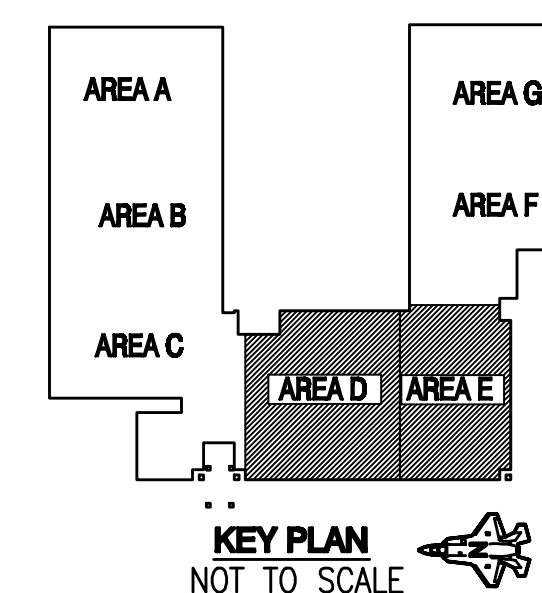
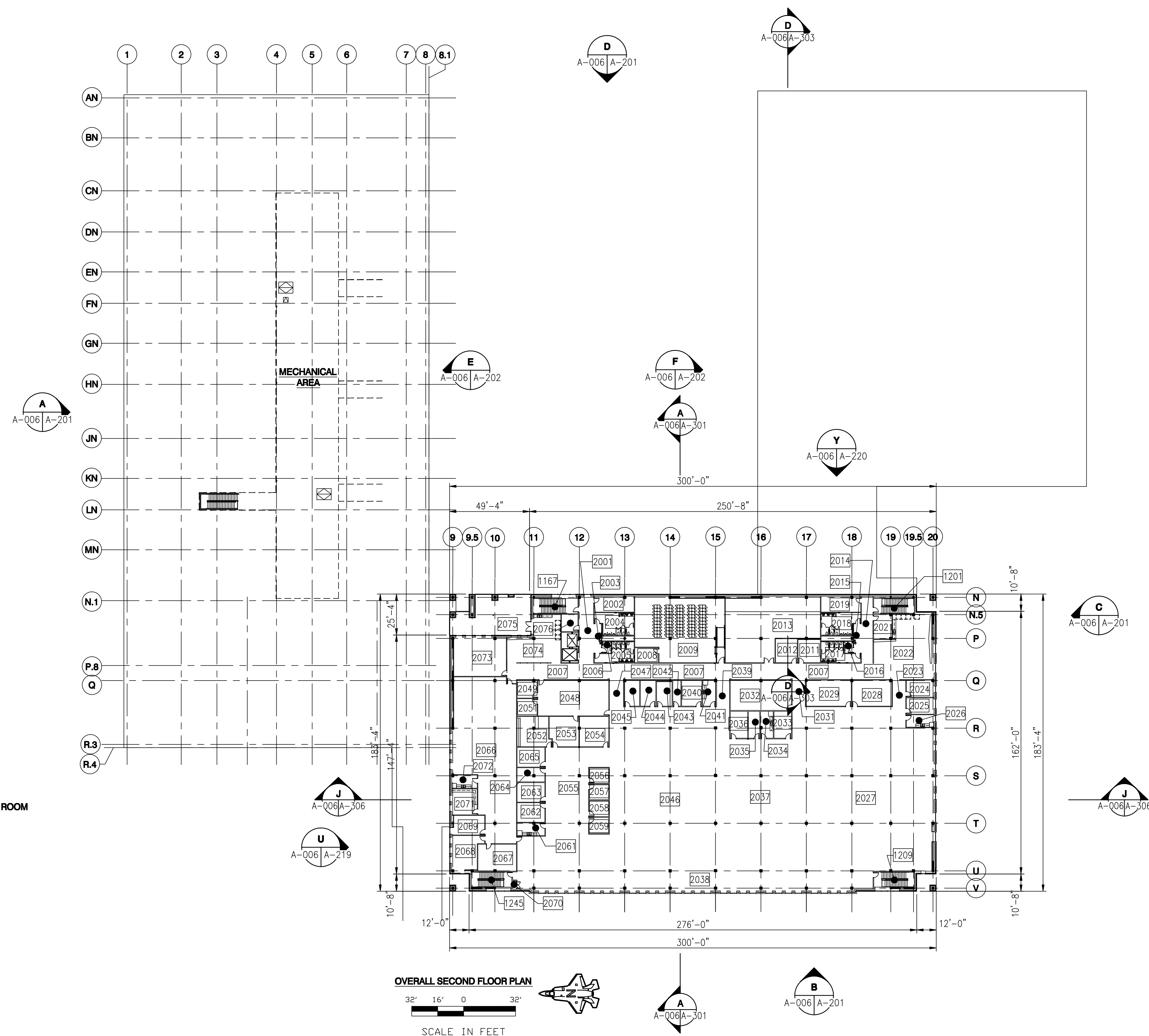
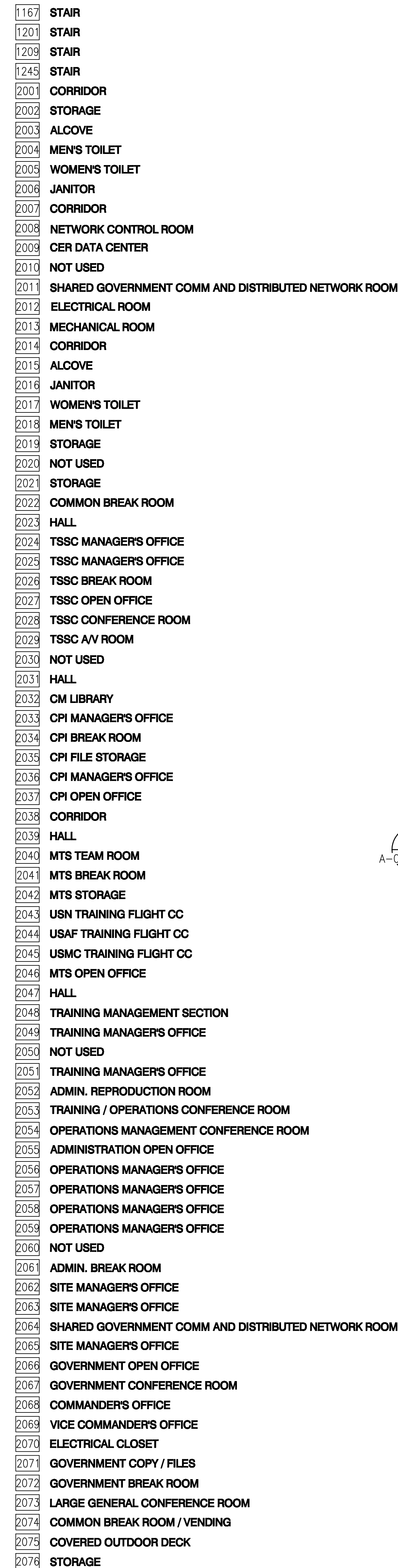
EGLIN AIR FORCE BASE, FLORIDA  
JSF ACADEMIC TRAINING CENTER (ATC)  
PROJECT NO. FTF4083950

**AS-BUILT**  
OVERALL FIRST FLOOR PLAN

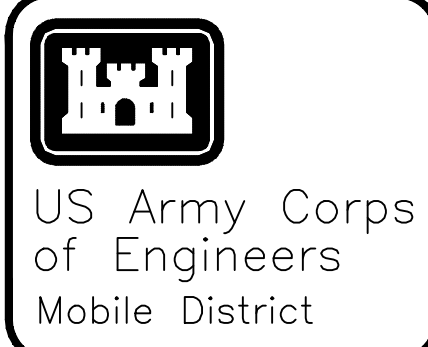
Sheet Reference Number:  
**A-005**

NOTE:  
FIRST FLOOR FINISH FLOOR ELEVATION= 100'-0" WHICH  
IS EQUIVALENT TO 72.00 FEET ON CIVIL DRAWINGS





GENERAL NOTES:  
1. DIMENSIONS SHOWN ARE TO FACE OF WALL.

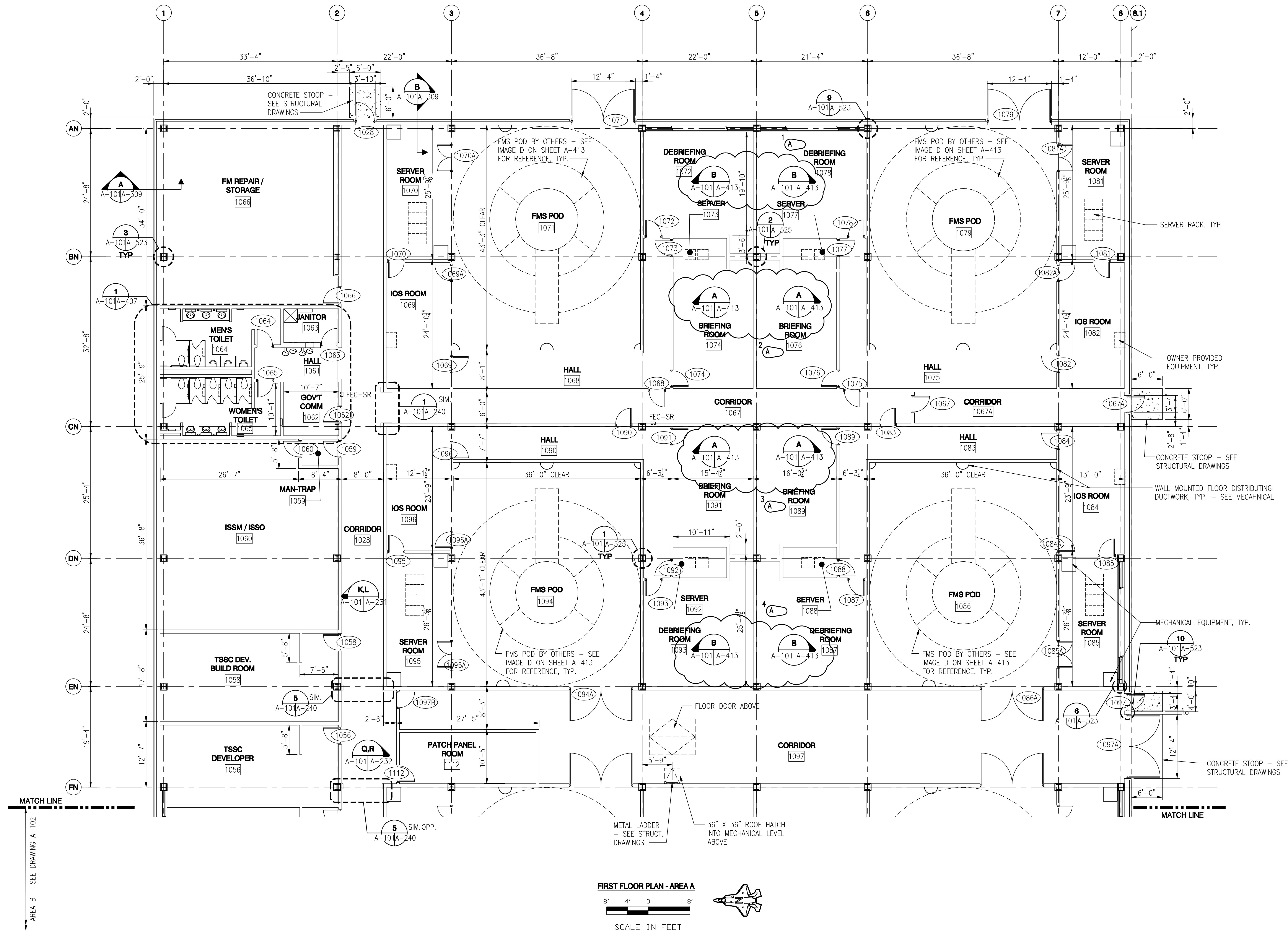


Symbol	No.	Description	Date	Approved
(A)	4	AS-BUILT: REF#165 - CHANGED SECTION VIEWS	12/15/09	JDC

Designed By:	K. FRANCIS	Date:	JULY, 2008
Drawn By:	T. HEIDMANN	File No.:	-
Checked By:	J. REHAK	I.S.O. Sheet File Name:	A101EB45.DWG
Reviewed By:	K. FRANCIS	Selection Number:	URGC-08-0006

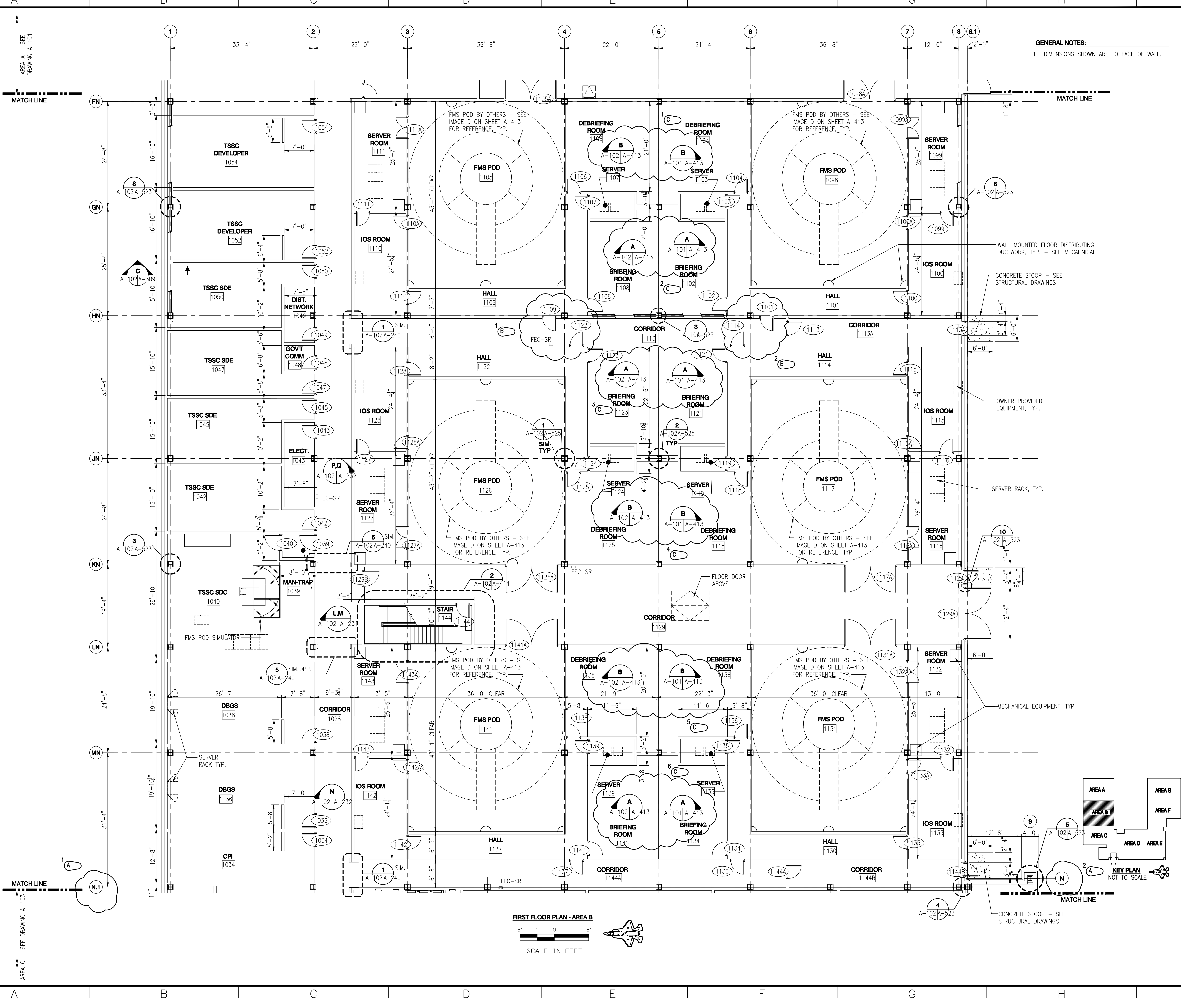
EGUN AIR FORCE BASE, FLORIDA  
JSF ACADEMIC TRAINING CENTER (ATC)  
PROJECT NO. FIFAO83950  
**AS-BUILT**  
FIRST FLOOR PLAN  
AREA A

Sheet  
Reference  
Number:  
  
A-101

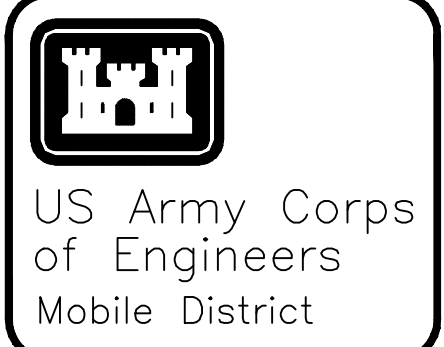


FIRST FLOOR PLAN - AREA A  
8' 4' 0' 8'  
SCALE IN FEET





GENERAL NOTES:  
1. DIMENSIONS SHOWN ARE TO FACE OF WALL.



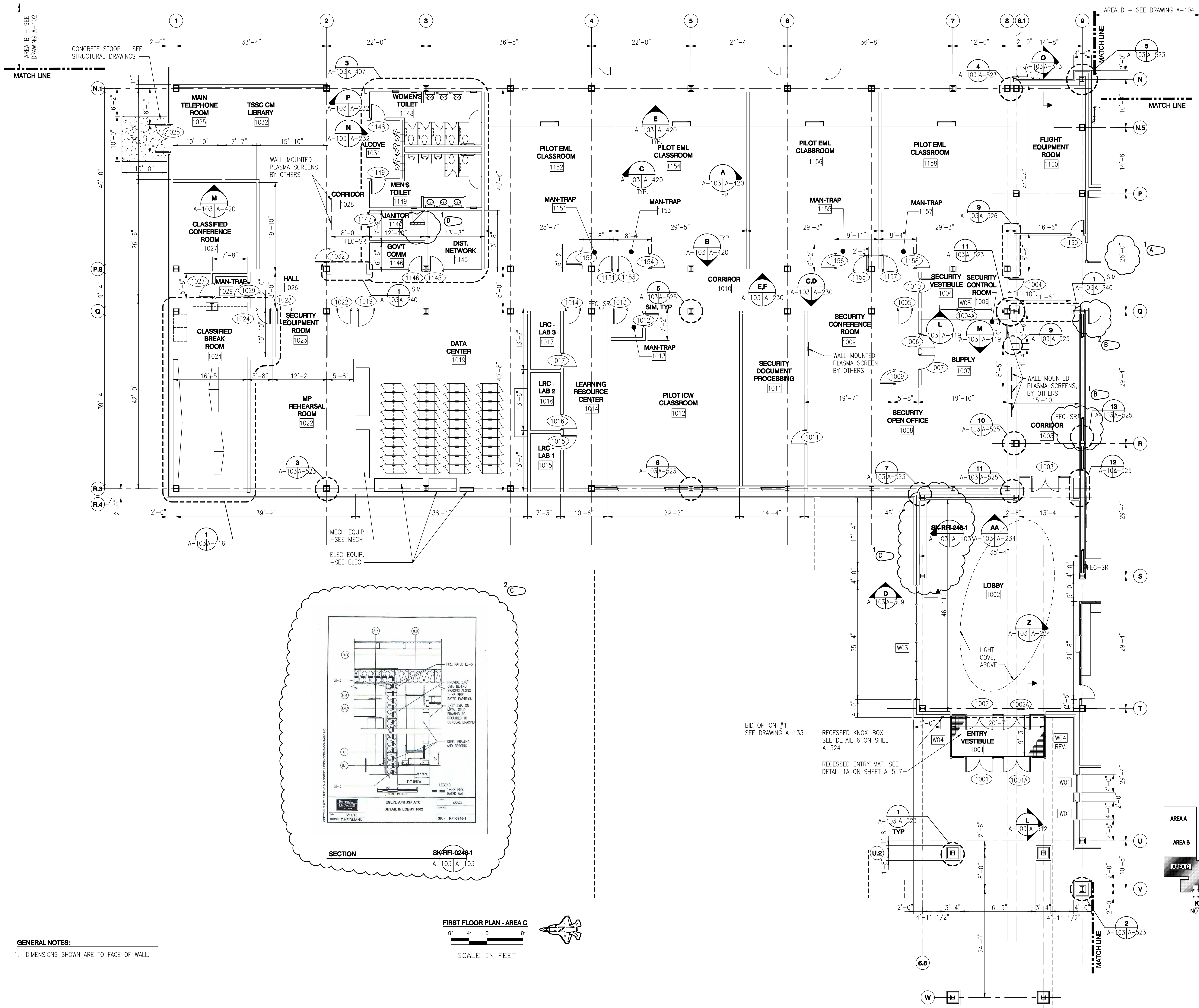
Symbol	No.	Description	Date	Revisions
C	6	AS-BUILT: REF#165 - CHANGED SECTION VIEWS	12/15/09	JDC
B	2	AS-BUILT: RELOCATED DOORS 1101, 1109, 1114, 1122 AND FEC-SR	8/28/09	JDC
A	2	AS-BUILT: REF#32 - CORRECTED GRID LINE NOTATION	4/16/09	JDC

Designed By:	K. FRANCIS	Date:	JULY, 2008
Drawn By:	T. HEIDMANN	File No.:	-
Checked By:	J. REHAK	I.S.O. Sheet File Name:	A102EB45.DWG
Reviewed By:	K. FRANCIS	Selection Number:	URGC-08-0006

EGJIN AIR FORCE BASE, FLORIDA  
JSF ACADEMIC TRAINING CENTER (ATC)  
PROJECT NO. F1FA083950  
**AS-BUILT**  
FIRST FLOOR PLAN  
AREA B

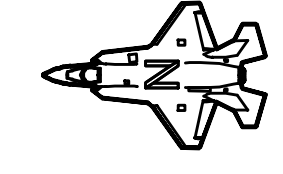
Sheet  
Reference  
Number:  
**A-102**





GENERAL NOTES:  
1. DIMENSIONS SHOWN ARE TO FACE OF WALL.

FIRST FLOOR PLAN - AREA C  
SCALE IN FEET  
8' 4' 0' 8'



US Army Corps of Engineers  
Mobile District

Symbol	No.	Description	Date	Approved
1	AS-BUILT: GEOSD - ADD SS PANEL			
2	AS-BUILT: RE#246 - ADD FALSE WALL TO CONCEAL STRUCTURAL STEEL X-BRACING		5/5/10	JDC
3	AS-BUILT: RE#140 RELOCATED DOOR 1238		11/12/09	JDC
4	AS-BUILT: CORRECTED DIMENSION BETWEEN COLUMNS P & Q		4/22/09	JDC

Revisions

Symbol	No.	Description	Date	Approved
1	AS-BUILT: GEOSD - ADD SS PANEL			
2	AS-BUILT: RE#246 - ADD FALSE WALL TO CONCEAL STRUCTURAL STEEL X-BRACING		5/5/10	JDC
3	AS-BUILT: RE#140 RELOCATED DOOR 1238		11/12/09	JDC
4	AS-BUILT: CORRECTED DIMENSION BETWEEN COLUMNS P & Q		4/22/09	JDC

U.S. ARMY ENGINEER DISTRICT  
CORPS OF ENGINEERS  
MOBILE, ALABAMA

Designed By: K. FRANCIS  
Drawn By: T. HEIDMANN  
Checked By: J. REHAK  
Reviewed By: K. FRANCIS

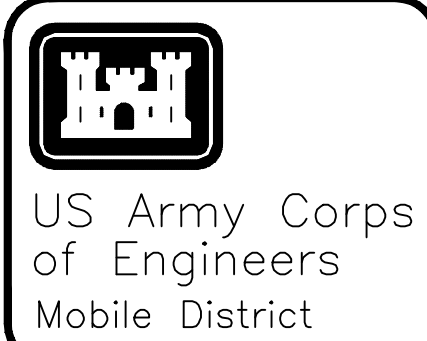
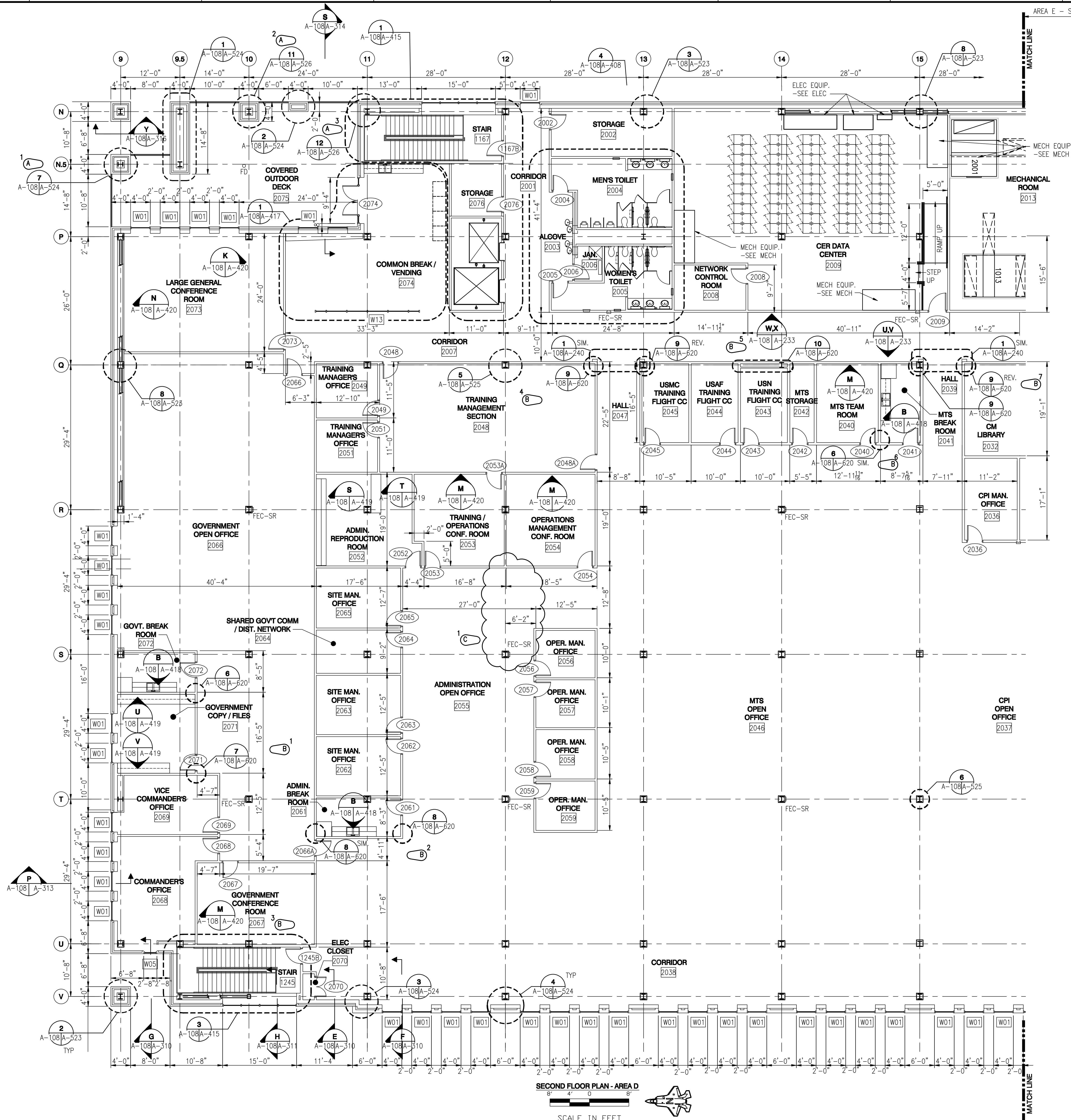
Date: JULY, 2008  
File No.:  
I.S.O. Sheet File Name: A103EB45.DWG  
Solicitation Number: URGC-08-0006

EGULIN AIR FORCE BASE, FLORIDA  
JSF ACADEMIC TRAINING CENTER (ATC)  
PROJECT NO. FTFA083950

**AS-BUILT**  
FIRST FLOOR PLAN  
AREA C

Sheet Reference Number:  
**A-103**





Revisions	Date	Description	Symbol	No.
1	03/09/10	AS-BUILT: REF#200 RELOCATED FIRE EXTINGUISHER CABINET		
2	07/15/10	REVISED CASEWORK AND CALLOUTS IN RESPONSE TO REF-0173		
3	06/03/09	REVISED AND ADDED DETAIL CALLOUTS FOR ADDED DETAILS		

Designed By:	K. FRANCIS	Date:	JULY, 2008
Drawn By:	T. HEIDMANN	File No.:	
Checked By:	J. REHAK	I.S.O. Sheet File Name:	A108EB45.DWG
Reviewed By:	K. FRANCIS	Solicitation Number:	URGC-08-0006

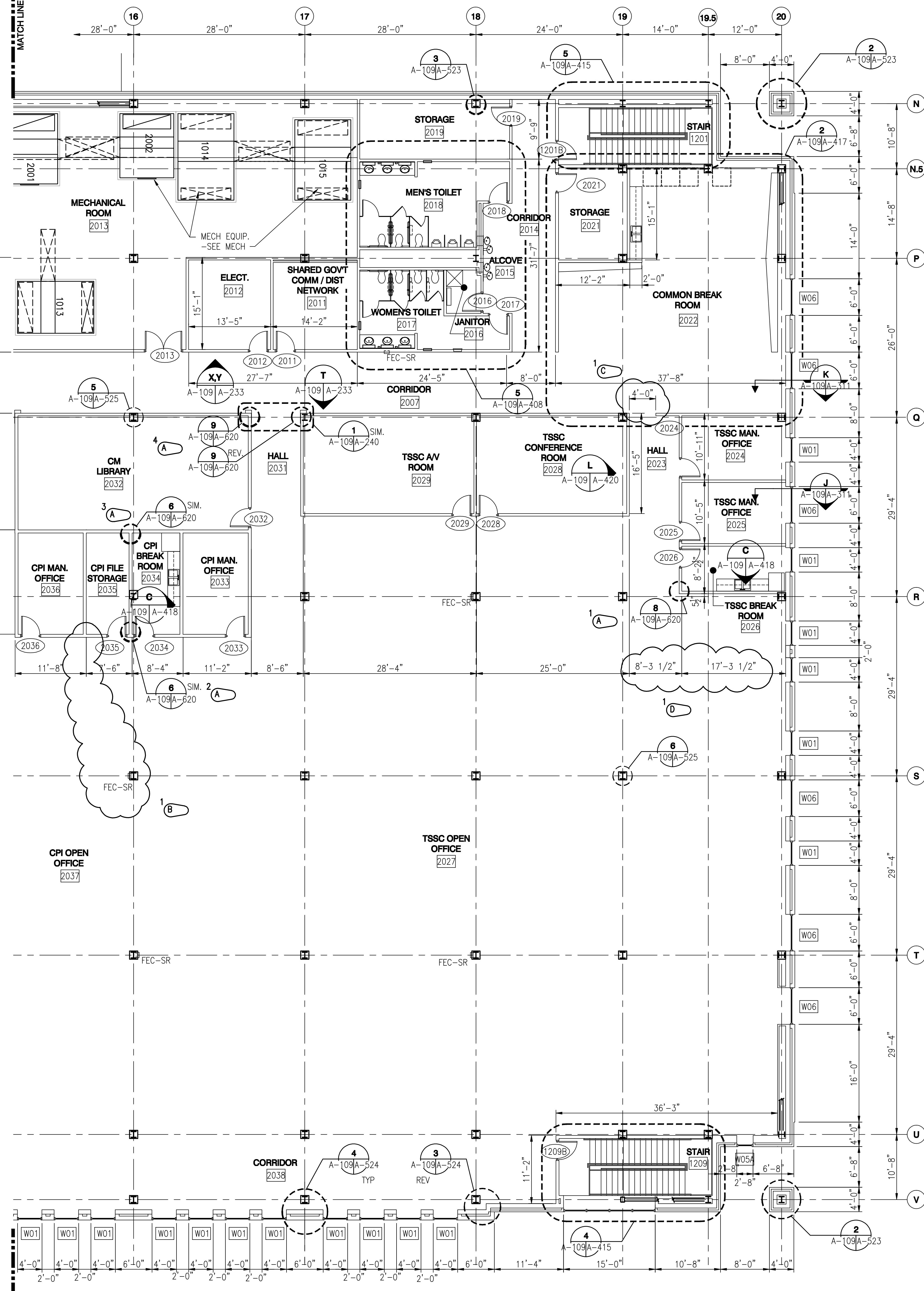
EGLIN AIR FORCE BASE, FLORIDA  
JSF ACADEMIC TRAINING CENTER (ATC)  
PROJECT NO. FTFA083950  
**AS-BUILT**  
SECOND FLOOR PLAN  
AREA D

Sheet  
Reference  
Number:  
**A-108**

AREA D - SEE DRAWING A-108

MATCH LINE

MATCH LINE

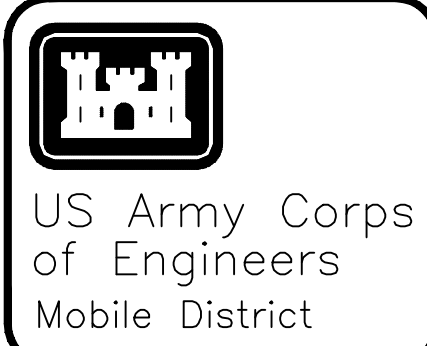


SECOND FLOOR PLAN - AREA E

SCALE IN FEET

GENERAL NOTES:

1. DIMENSIONS SHOWN ARE TO FACE OF WALL.



Symbol	No.	Description	Date	Approved
1	AS-BUILT: REVISED WALL LOCATIONS		04/07/10	JDC
2	1 AS-BUILT: REVISED OPENING WIDTH, PER THEIDMANN		03/26/10	JDC
3	1 AS-BUILT: REF#200 - RELOCATED FIRE EXTINGUISHER CABINET		03/09/10	JDC
4	REVISED WALL LOCATION DUE TO RFI 0188, ADDED DETAIL CUTS PER RFI 0173		02/15/10	K. FRANCIS

Designed By:	K. FRANCIS	Date:	JULY, 2008
Drawn By:	T. HEIDMANN	File No.:	-
Checked By:	J. REHAK	I.S.O. Sheet File Name:	A109EB45.DWG
Reviewed By:	K. FRANCIS	Solicitation Number:	URGC-08-0006

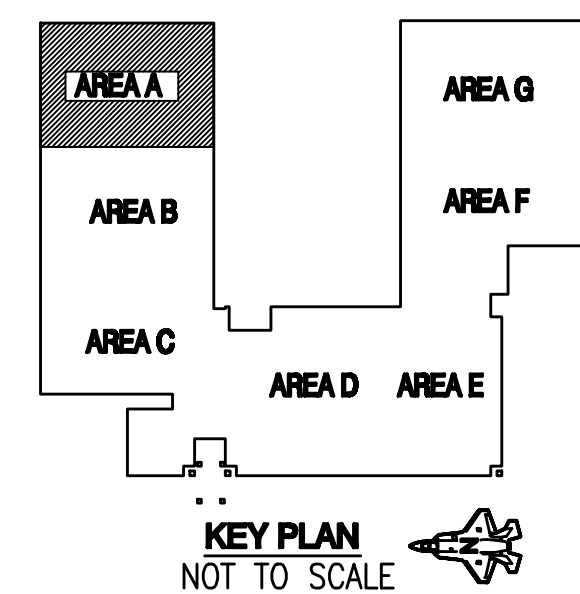
EGLIN AIR FORCE BASE, FLORIDA  
JSF ACADEMIC TRAINING CENTER (ATC)  
PROJECT NO. FTFA083950  
**AS-BUILT**  
SECOND FLOOR PLAN  
AREA E

Sheet  
Reference  
Number:  
**A-109**



**GENERAL NOTES:**


1. TYPICAL ACCESS FLOOR SYSTEM HEIGHT IS 12" ABOVE STRUCTURAL SUBFLOOR EXCEPT AS NOTED.
2. REFERENCE DRAWINGS A-601 THRU A-607 FOR ROOM FINISH SCHEDULES & MATERIAL LEGEND FOR THE ACCESS FLOOR SYSTEM PANEL FINISH AND THE FINISH FLOOR MATERIAL. REFERENCE DRAWINGS I-101 THRU I-109 FOR FURNITURE PLACEMENT PLANS TO COORDINATE HVAC SUPPLY DIFFUSERS WITH FURNITURE PLACEMENT.
3. SOME FINISH FLOORS OF THIS BUILDING CONSIST OF A RAISED ACCESS FLOOR SYSTEM INSTALLED OVER A CONCRETE STRUCTURAL SUBFLOOR. WHERE OCCURS, THE ACCESS FLOOR SYSTEM INCORPORATES UNDERFLOOR VOICE, DATA, AND OTHER CABLE MANAGEMENT, AND, IN THE DATA CENTERS ONLY, HVAC DISTRIBUTION SYSTEMS. COORDINATION BETWEEN THE CONTRACTING OFFICER'S REPRESENTATIVE, AND THE ACCESS FLOOR SYSTEM MANUFACTURER AND INSTALLER, THE FURNITURE MANUFACTURER AND INSTALLER, THE PLUMBING, HVAC, ELECTRICAL, AND FIRE PROTECTION SUBCONTRACTORS IS REQUIRED FOR THE PROPER INSTALLATION OF THE ACCESS FLOOR SYSTEM AND TO MAINTAIN THE INTEGRITY OF THE UNDERFLOOR AIR DISTRIBUTION PLENUM BY SEALING ALL PENETRATIONS IN THE ACCESS FLOOR BEFORE THE INSTALLATION OF THE FLOOR PANELS, FINISHES, FURNITURE, OR EQUIPMENT. REFERENCE SECTION 09 69 00 - ACCESS FLOORING, FOR SPECIAL PROJECT PROCEDURES.
4. COORDINATE ACCESS FLOOR SYSTEM AND AIR SUPPLY PANELS IN ALL DATA CENTER ROOMS WITH EQUIPMENT RACKS. THERE MUST BE MINIMUM ONE PANEL ROW AVAILABLE (BETWEEN RACKS) FOR REMOVAL AND ACCESS.
5. ALIGN ACCESS FLOOR SYSTEM PANELS WITH WALLS - PROVIDE CONTROL JOINT THROUGH ACCESS FLOOR SYSTEM AND FINISH FLOOR.
6. ISOLATE ACCESS FLOOR SYSTEM AT FLOOR FINISH CHANGE - TERMINATE PANEL LAYOUT.
7. REFERENCE DRAWING A-516 FOR TYPICAL ACCESS FLOOR DETAILS.
8. REFERENCE MECHANICAL DRAWINGS FOR NUMBER AND LOCATION OF PERFORATED TILES AND DAMPERS.
9. WHERE PARTITIONS HAVE 3 LAYERS OF GYP. BOARD, INSTALL THE 2 LAYERS OF GYP BOARD ON THE NON-CORRIDOR SIDE.
10. ACCESS FLOOR PANELS ARE STANDARD DUTY UNLESS NOTED OTHERWISE.

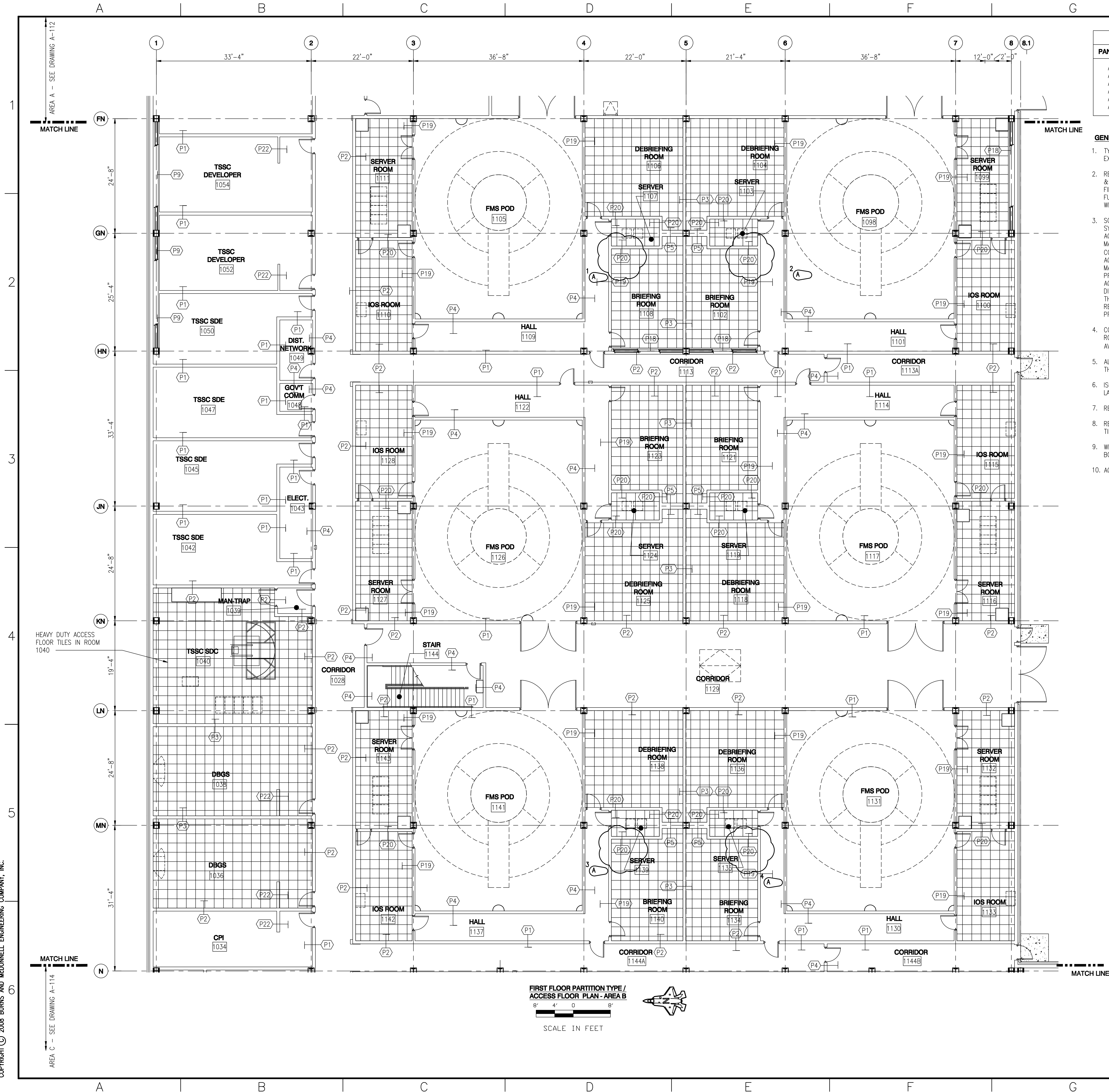



**FIRST FLOOR PARTITION TYPE /  
ACCESS FLOOR PLAN - AREA A**

8' 4' 0 8'

SCALE IN FEET

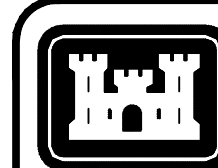




ACCESS FLOOR LEGEND	
PANEL TYPE	DESCRIPTION
AFS-1, AFS-2, AFS-3, AFS-4, AFS-5, AFS-6	 ACCESS FLOOR SYSTEM (2' x 2' PANELS) (AFS-2 OR AFS 4) IN ALL LAN, MECH/ELECT., COMPUTER AND UPS ROOMS. SEE FINISH SCHEDULE FOR EXACT LOCATION  REFERENCE COLOR SCHEDULE 090690 SECTION

**GENERAL NOTES:**

1. TYPICAL ACCESS FLOOR SYSTEM HEIGHT IS 12" ABOVE STRUCTURAL SUBFLOOR EXCEPT AS NOTED.
2. REFERENCE DRAWINGS A-601 THRU A-607 FOR ROOM FINISH SCHEDULES & MATERIAL LEGEND FOR THE ACCESS FLOOR SYSTEM PANEL FINISH AND THE FINISH FLOOR MATERIAL. REFERENCE DRAWINGS I-101 THRU I-109 FOR FURNITURE PLACEMENT PLANS TO COORDINATE HVAC SUPPLY DIFFUSERS WITH FURNITURE PLACEMENT.
3. SOME FINISH FLOORS OF THIS BUILDING CONSIST OF A RAISED ACCESS FLOOR SYSTEM INSTALLED OVER A CONCRETE STRUCTURAL SUBFLOOR. WHERE OCCURS, THE ACCESS FLOOR SYSTEM INCORPORATES UNDERFLOOR VOYCE, DATA, AND OTHER CABLE MANAGEMENT, AND, IN THE DATA CENTERS ONLY, HVAC DISTRIBUTION SYSTEMS. COORDINATION BETWEEN THE CONTRACTING OFFICER'S REPRESENTATIVE, AND THE ACCESS FLOOR SYSTEM MANUFACTURER AND INSTALLER, THE FURNITURE MANUFACTURER AND INSTALLER, THE PLUMBING, HVAC, ELECTRICAL, AND FIRE PROTECTION SUBCONTRACTORS IS REQUIRED FOR THE PROPER INSTALLATION OF THE ACCESS FLOOR SYSTEM AND TO MAINTAIN THE INTEGRITY OF THE UNDERFLOOR AIR DISTRIBUTION PLENUM BY SEALING ALL PENETRATIONS IN THE ACCESS FLOOR BEFORE THE INSTALLATION OF THE FLOOR PANELS, FINISHES, FURNITURE, OR EQUIPMENT. REFERENCE SECTION 09 69 00 - ACCESS FLOORING, FOR SPECIAL PROJECT PROCEDURES.
4. COORDINATE ACCESS FLOOR SYSTEM AND AIR SUPPLY PANELS IN ALL DATA CENTER ROOMS WITH EQUIPMENT RACKS. THERE MUST BE MINIMUM ONE PANEL ROW AVAILABLE (BETWEEN RACKS) FOR REMOVAL AND ACCESS.
5. ALIGN ACCESS FLOOR SYSTEM PANELS WITH WALLS - PROVIDE CONTROL JOINT THROUGH ACCESS FLOOR SYSTEM AND FINISH FLOOR.
6. ISOLATE ACCESS FLOOR SYSTEM AT FLOOR FINISH CHANGE - TERMINATE PANEL LAYOUT.
7. REFERENCE DRAWING A-516 FOR TYPICAL ACCESS FLOOR DETAILS.
8. REFERENCE MECHANICAL DRAWINGS FOR NUMBER AND LOCATION OF PERFORATED TILES AND DAMPERS.
9. WHERE PARTITIONS HAVE 3 LAYERS OF GYP. BOARD, INSTALL THE 2 LAYERS OF GYP BOARD ON THE NON-CORRIDOR SIDE.
10. ACCESS FLOOR PANELS ARE STANDARD DUTY UNLESS NOTED OTHERWISE.



US Army Corps  
of Engineers  
Mobile District

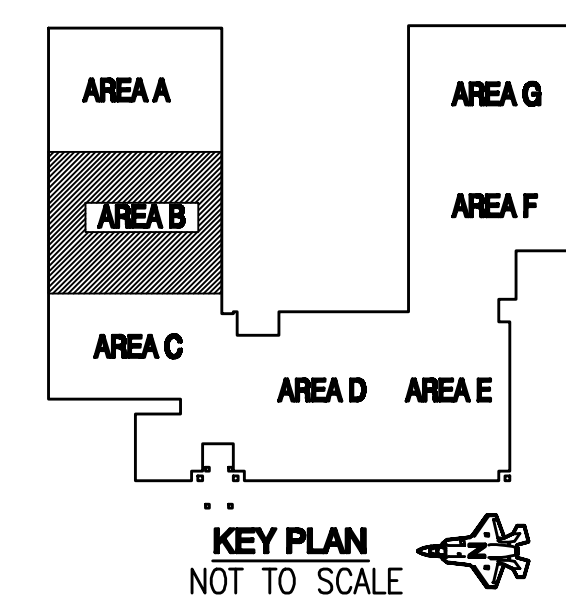
Symbol No.	Description	Date	Approved
4	AS-BUILT: RF#135 - MODIFIED PARTITION	10/16/09	JDC

U.S. ARMY ENGINEER DISTRICT CORPS OF ENGINEERS MOBILE, ALABAMA	Designed By: K. FRANCIS	Date: JULY, 2008
	Drawn By: T. HEIDMANN	File No. —
	Checked By: J. REHAK	ISO. Sheet File Name: A113EB45.DWG
BURNS & McDONNELL 9400 WARD PARKWAY KANSAS CITY, MISSOURI	Reviewed By: K. FRANCIS	Solicitation Number: URGG08-09-0006

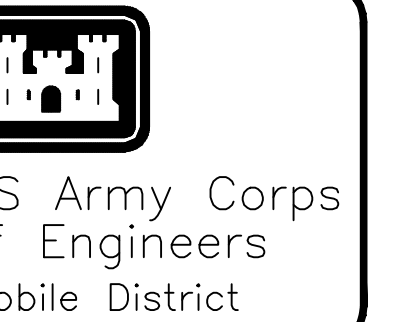
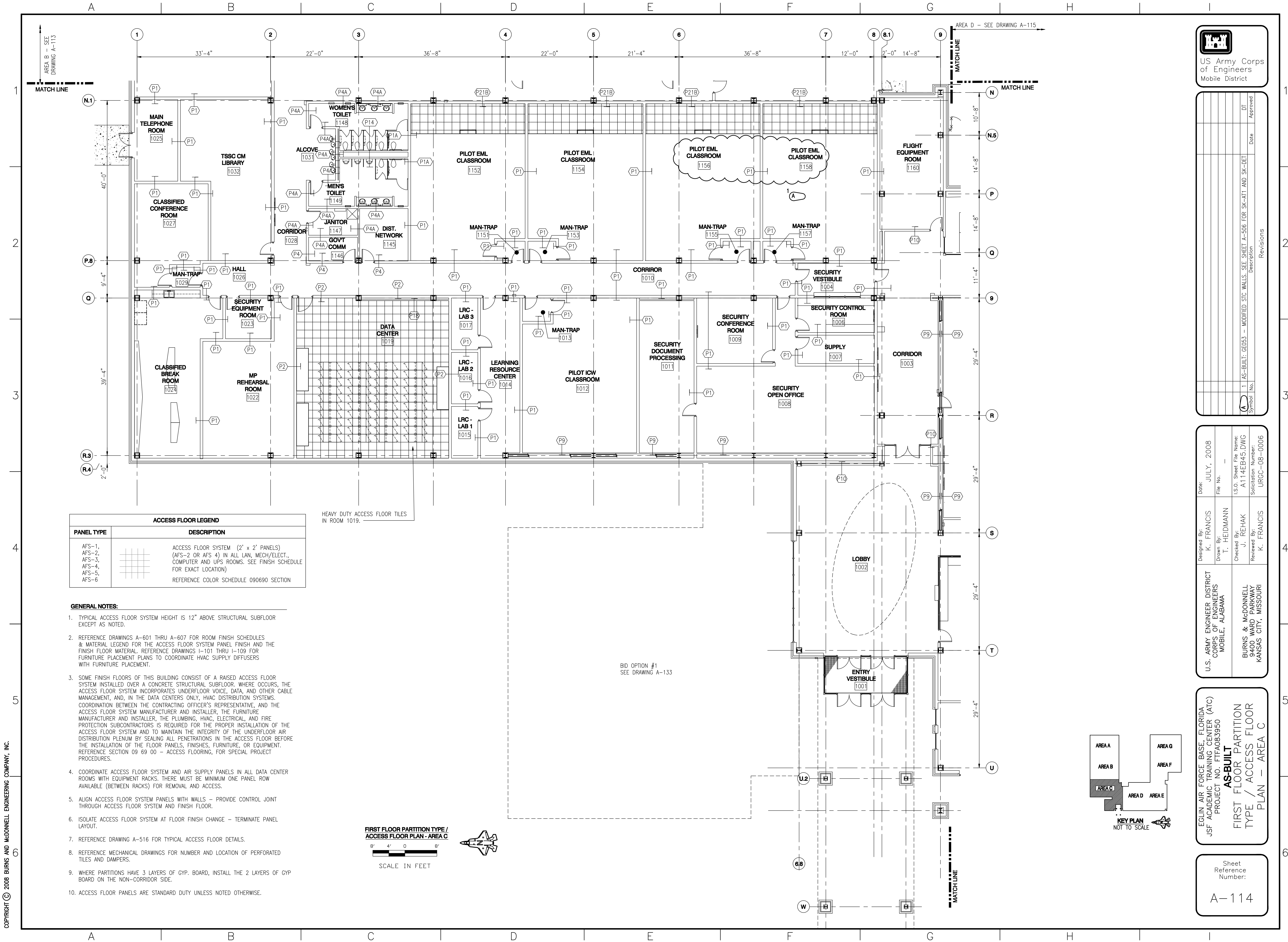
EGLIN AIR FORCE BASE, FLORIDA  
USF ACADEMIC TRAINING CENTER (ATC)  
PROJECT NO. FFA083950  
**AS-BUILT**  
FIRST FLOOR PARTITION  
TYPE / ACCESS FLOOR  
PLAN AREA B

Sheet  
Reference  
Number:

A-113





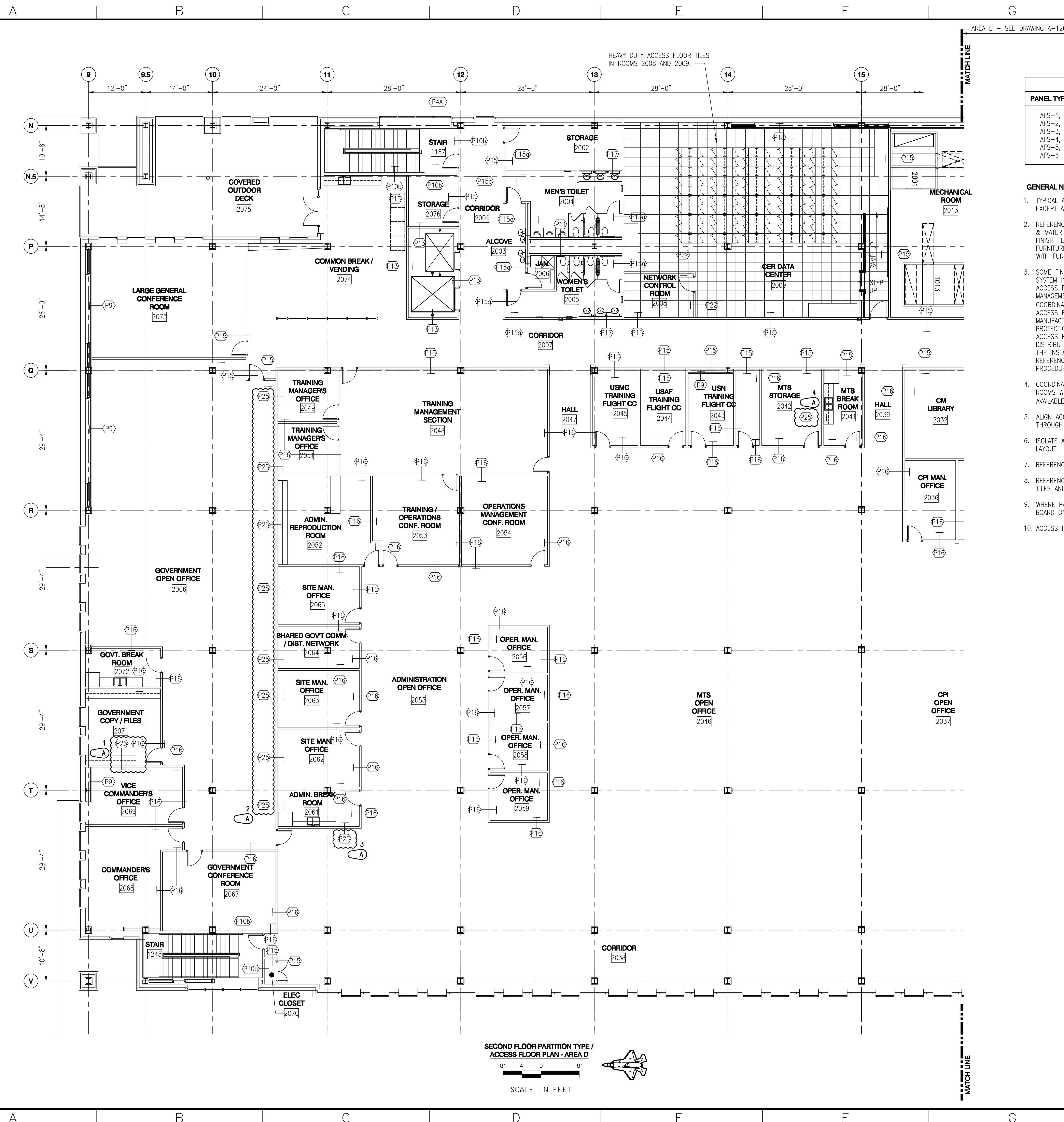


Revisions	Date	DT	Approved
1	AS-BUILT: GE053 - MODIFIED STC WALLS. SEE SHEET A-506 FOR SK-AT1 AND SK-DET		
Symbol	No.		

Designed By: K. FRANCIS	Date: JULY, 2008
Drawn By: T. HELDMANN	File No.: -
Checked By: J. REHAK	I.S.O. Sheet File Name: A114EB45.DWG
Reviewed By: K. FRANCIS	Solicitation Number: URGC-08-0006

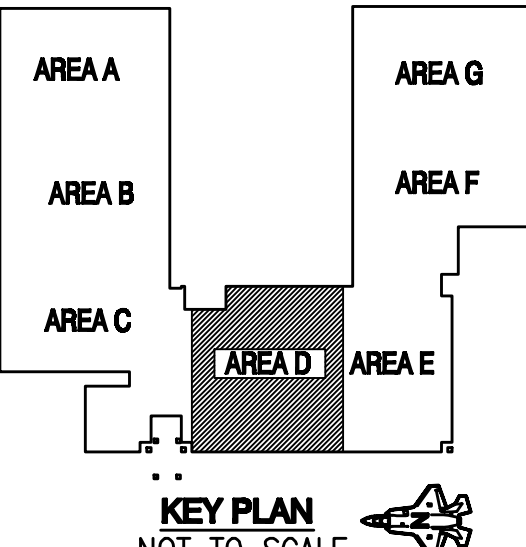
EGLIN AIR FORCE BASE, FLORIDA  
JSF ACADEMIC TRAINING CENTER (ATC)  
PROJECT NO. FTFA083950  
**AS-BUILT**  
FIRST FLOOR PARTITION  
TYPE / ACCESS FLOOR  
PLAN - AREA C

Sheet  
Reference  
Number:  
  
A-114

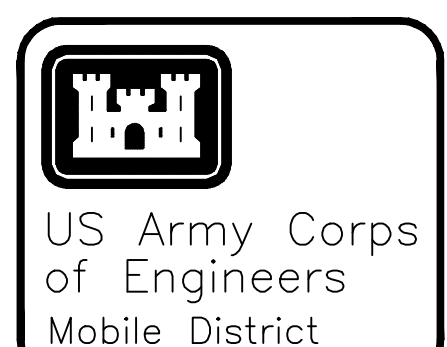


ACCESS FLOOR LEGEND	
PANEL TYPE	DESCRIPTION
AFS-1, AFS-2, AFS-3, AFS-4, AFS-5, AFS-6	ACCESS FLOOR SYSTEM (2' x 2' PANELS) (AFS-2 OR AFS 4) IN ALL LAN, MECH/ELECT., COMPUTER AND UPS ROOMS. SEE FINISH SCHEDULE FOR EXACT LOCATION) REFERENCE COLOR SCHEDULE 090690 SECTION

- GENERAL NOTES:**
1. TYPICAL ACCESS FLOOR SYSTEM HEIGHT IS 12" ABOVE STRUCTURAL SUBFLOOR EXCEPT AS NOTED.
  2. REFERENCE DRAWINGS A-601 THRU A-607 FOR ROOM FINISH SCHEDULES & MATERIAL LEGEND FOR THE ACCESS FLOOR SYSTEM PANEL FINISH AND THE FINISH FLOOR MATERIAL. REFERENCE DRAWINGS I-101 THRU I-109 FOR FURNITURE PLACEMENT PLANS TO COORDINATE HVAC SUPPLY DIFFUSERS WITH FURNITURE PLACEMENT.
  3. SOME FINISH FLOORS OF THIS BUILDING CONSIST OF A RAISED ACCESS FLOOR SYSTEM INSTALLED OVER A CONCRETE STRUCTURAL SUBFLOOR. WHERE OCCURS, THE ACCESS FLOOR SYSTEM INCORPORATES UNDERFLOOR VOICE, DATA, AND OTHER CABLE MANAGEMENT, AND, IN THE DATA CENTERS ONLY, HVAC DISTRIBUTION SYSTEMS. COORDINATION BETWEEN THE CONTRACTING OFFICER'S REPRESENTATIVE, AND THE ACCESS FLOOR SYSTEM MANUFACTURER AND INSTALLER, THE FURNITURE MANUFACTURER AND INSTALLER, THE PLUMBING, HVAC, ELECTRICAL, AND FIRE PROTECTION SUBCONTRACTORS IS REQUIRED FOR THE PROPER INSTALLATION OF THE ACCESS FLOOR SYSTEM AND TO MAINTAIN THE INTEGRITY OF THE UNDERFLOOR AIR DISTRIBUTION PLENUM BY SEALING ALL PENETRATIONS IN THE ACCESS FLOOR BEFORE THE INSTALLATION OF THE FLOOR PANELS, FINISHES, FURNITURE, OR EQUIPMENT. REFERENCE SECTION 09 69 00 - ACCESS FLOORING, FOR SPECIAL PROJECT PROCEDURES.
  4. COORDINATE ACCESS FLOOR SYSTEM AND AIR SUPPLY PANELS IN ALL DATA CENTER ROOMS WITH EQUIPMENT RACKS. THERE MUST BE MINIMUM ONE PANEL ROW AVAILABLE (BETWEEN RACKS) FOR REMOVAL AND ACCESS.
  5. ALIGN ACCESS FLOOR SYSTEM PANELS WITH WALLS - PROVIDE CONTROL JOINT THROUGH ACCESS FLOOR SYSTEM AND FINISH FLOOR.
  6. ISOLATE ACCESS FLOOR SYSTEM AT FLOOR FINISH CHANGE - TERMINATE PANEL LAYOUT.
  7. REFERENCE DRAWING A-516 FOR TYPICAL ACCESS FLOOR DETAILS.
  8. REFERENCE MECHANICAL DRAWINGS FOR NUMBER AND LOCATION OF PERFORATED TILES AND DAMPERS.
  9. WHERE PARTITIONS HAVE 3 LAYERS OF GYP. BOARD, INSTALL THE 2 LAYERS OF GYP BOARD ON THE NON-CORRIDOR SIDE.
  10. ACCESS FLOOR PANELS ARE STANDARD DUTY UNLESS NOTED OTHERWISE.



SECOND FLOOR PARTITION TYPE /  
 ACCESS FLOOR PLAN - AREA D  
 8' 4' 0'  
 SCALE IN FEET



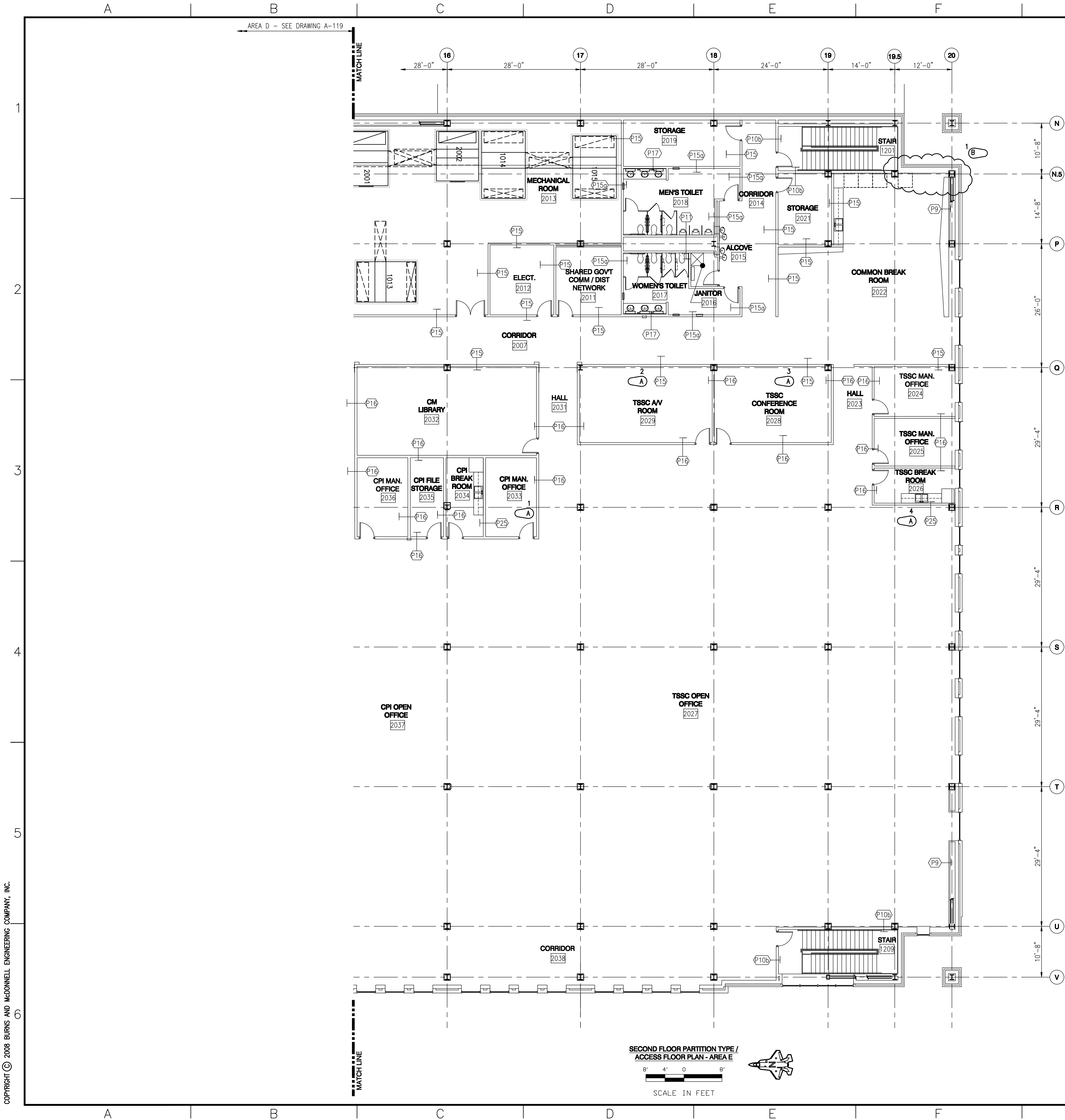
US Army Corps of Engineers Mobile District	02/15/10	K. FRANCIS	Approved
4 REVISED PARTITION TYPES PER REF-0173	Date	Description	Revisions
Symbol No.			

U.S. ARMY ENGINEER DISTRICT CORPS OF ENGINEERS MOBILE, ALABAMA	Designed By: K. FRANCIS	Date: JULY, 2008
	Drawn By: T. HEIDMANN	File No.:
	Checked By: J. REHAK	ISO Sheet File Name: A119EB45.DWG
	Reviewed By: K. FRANCIS	Salutation Number: URCC-08-0006

EGLIN AIR FORCE BASE, FLORIDA  
 JSF ACADEMIC TRAINING CENTER (ATC)  
 PROJECT NO. F1FA083950  
**AS-BUILT**  
 SECOND FLOOR PARTITION  
 TYPE / ACCESS FLOOR  
 PLAN - AREA D

Sheet  
 Reference  
 Number:  
 A-119





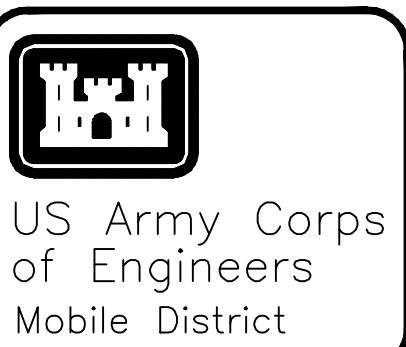
SECOND FLOOR PARTITION TYPE /  
ACCESS FLOOR PLAN - AREA E

8' 4' 0 8'

SCALE IN FEET

ACCESS FLOOR LEGEND	
PANEL TYPE	DESCRIPTION
AFS-1, AFS-2, AFS-3, AFS-4, AFS-5, AFS-6	ACCESS FLOOR SYSTEM (2' x 2' PANELS) (AFS-2 OR AFS 4) IN ALL LAN, MECH/ELECT., COMPUTER AND UPS ROOMS. SEE FINISH SCHEDULE FOR EXACT LOCATION) REFERENCE COLOR SCHEDULE 090690 SECTION

- GENERAL NOTES:**
1. TYPICAL ACCESS FLOOR SYSTEM HEIGHT IS 12" ABOVE STRUCTURAL SUBFLOOR EXCEPT AS NOTED.
  2. REFERENCE DRAWINGS A-601 THRU A-607 FOR ROOM FINISH SCHEDULES & MATERIAL LEGEND FOR THE ACCESS FLOOR SYSTEM PANEL FINISH AND THE FINISH FLOOR MATERIAL. REFERENCE DRAWINGS 1-101 THRU 1-109 FOR FURNITURE PLACEMENT PLANS TO COORDINATE HVAC SUPPLY DIFFUSERS WITH FURNITURE PLACEMENT.
  3. SOME FINISH FLOORS OF THIS BUILDING CONSIST OF A RAISED ACCESS FLOOR SYSTEM INSTALLED OVER A CONCRETE STRUCTURAL SUBFLOOR. WHERE OCCURS, THE ACCESS FLOOR SYSTEM INCORPORATES UNDERFLOOR VOICE, DATA, AND OTHER CABLE MANAGEMENT, AND, IN THE DATA CENTERS ONLY, HVAC DISTRIBUTION SYSTEMS. COORDINATION BETWEEN THE CONTRACTING OFFICER'S REPRESENTATIVE, AND THE ACCESS FLOOR SYSTEM MANUFACTURER AND INSTALLER, THE FURNITURE MANUFACTURER AND INSTALLER, THE PLUMBING, HVAC, ELECTRICAL, AND FIRE PROTECTION SUBCONTRACTORS IS REQUIRED FOR THE PROPER INSTALLATION OF THE ACCESS FLOOR SYSTEM AND TO MAINTAIN THE INTEGRITY OF THE UNDERFLOOR AIR DISTRIBUTION PLenum BY SEALING ALL PENETRATIONS IN THE ACCESS FLOOR BEFORE THE INSTALLATION OF THE FLOOR PANELS, FINISHES, FURNITURE, OR EQUIPMENT. REFERENCE SECTION 09 69 00 - ACCESS FLOORING, FOR SPECIAL PROJECT PROCEDURES.
  4. COORDINATE ACCESS FLOOR SYSTEM AND AIR SUPPLY PANELS IN ALL DATA CENTER ROOMS WITH EQUIPMENT RACKS. THERE MUST BE MINIMUM ONE PANEL ROW AVAILABLE (BETWEEN RACKS) FOR REMOVAL AND ACCESS.
  5. ALIGN ACCESS FLOOR SYSTEM PANELS WITH WALLS - PROVIDE CONTROL JOINT THROUGH ACCESS FLOOR SYSTEM AND FINISH FLOOR.
  6. ISOLATE ACCESS FLOOR SYSTEM AT FLOOR FINISH CHANGE - TERMINATE PANEL LAYOUT.
  7. REFERENCE DRAWING A-516 FOR TYPICAL ACCESS FLOOR DETAILS.
  8. REFERENCE MECHANICAL DRAWINGS FOR NUMBER AND LOCATION OF PERFORATED TILES AND DAMPERS.
  9. WHERE PARTITIONS HAVE 3 LAYERS OF GYP. BOARD, INSTALL THE 2 LAYERS OF GYP BOARD ON THE NON-CORRIDOR SIDE.
  10. ACCESS FLOOR PANELS ARE STANDARD DUTY UNLESS NOTED OTHERWISE.



Symbol No.	Description	Revisions
1	AS-BUILT: ADDED BULKHEAD TO HIDE RED IRON	05/26/10 JDC
2	REVISED PARTITION TYPES PER RFT-0713	02/15/10 K. FRANCIS

U.S. ARMY ENGINEER DISTRICT CORPS OF ENGINEERS MOBILE, ALABAMA	Designed By: K. FRANCIS	Date: JULY, 2008
	Drawn By: T. HEIDMANN	File No.:
BURNS & MCDONNELL 9400 WARD PARKWAY KANSAS CITY, MISSOURI	Checked By: J. REHAK	15.0. Sheet File Name: A120EB45.DWG
	Reviewed By: K. FRANCIS	Solicitation Number: URCC-08-0006

EGLIN AIR FORCE BASE, FLORIDA  
JSF ACADEMIC TRAINING CENTER (ATC)  
PROJECT NO. FTFA083950

**AS-BUILT**

SECOND FLOOR PARTITION  
TYPE / ACCESS FLOOR  
PLAN - AREA E

Sheet  
Reference  
Number:

A-120

