

MECHANICAL SCOPE OF WORK SUMMARY

1. PROVIDE AND INSTALL WALL LOUVERS AS SCHEDULED
2. ALL MATERIALS SUPPLIED AND INSTALLED SHALL BE SUITABLE FOR A COASTAL ENVIRONMENT.
3. WORK INCLUDES OBTAINING PERMITS, PROCUREMENT OF EQUIPMENT, MATERIALS, ETC. ; COORDINATING BETWEEN TRADES; DEMOLITION, INSTALLATION, STARTUP, REPORTING, SYSTEMS CHECKOUT; ASSISTING THE TEST, ADJUST AND BALANCE CONTRACTOR, AND RESOLVING DISCREPANCIES; PERFORMING SUBSTANTIAL AND FINAL COMPLETION ACTIVITIES, TRAINING, DEVELOPING AND SUBMITTING THE OPERATION AND MAINTENANCE MANUALS, AND PERFORMING PROJECT CLOSEOUT.

CODES

THE INSTALLATION SHALL COMPLY WITH THE INDICATED EDITION OF THE FOLLOWING CODES AND ORDINANCES. WHERE SPECIFIC EDITION IS NOT INDICATED, COMPLY WITH THE LATEST PUBLISHED EDITION.

NATIONAL FIRE PROTECTION ASSOCIATION - NFPA
NFPA 70 - 2020; NATIONAL ELECTRICAL CODE

FLORIDA BUILDING CODE
FBC-B 2023; THE FLORIDA BUILDING CODE (8th EDITION)
FBC-M 2023; THE FLORIDA MECHANICAL CODE (8th EDITION)
FBC-A 2023; THE FLORIDA BUILDING CODE, ACCESSIBILITY (8th EDITION)
FBC-EC 2023; THE FLORIDA BUILDING CODE, ENERGY CONSERVATION (8th EDITION)
FBC-P 2023; THE FLORIDA BUILDING CODE, PLUMBING (8th EDITION)

STATE AND MUNICIPAL CODES AND REQUIREMENTS

GENERAL NOTES

THE WORK WILL BE COMPLETE, FULLY OPERATIONAL, AND SUITABLE FOR THE SERVICE REQUIRED. DRAWINGS INDICATE SCOPE AND DO NOT SHOW ALL DETAILS, DEVICES AND INCIDENTAL MATERIALS NECESSARY TO ACCOMPLISH THE WORK. IT IS UNDERSTOOD THAT SUCH DEVICES AND INCIDENTAL MATERIALS REQUIRED WILL BE FURNISHED.

INSTALLERS ARE EXPECTED TO PROVIDE PROFESSIONAL WORK PERFORMED IN ACCORDANCE WITH INDUSTRY STANDARDS AND GOOD PRACTICE.

UPON COMPLETION OF THE WORK THE INSTALLERS WILL CLEAN SPACES THAT WERE OCCUPIED BY TEMPORARY WORK AND TEMPORARY FACILITIES. REMOVE DEBRIS, RUBBISH AND EXCESS MATERIALS FROM THE SITES. REPAIR DAMAGES CAUSED BY INSTALLATION OR USE OF TEMPORARY FACILITIES.

THE INSTALLERS WILL DELIVER TO THE OWNER, UPON SUBSTANTIAL COMPLETION OF THE WORK, ELECTRONIC COPIES OF DESCRIPTIVE LITERATURE RELATED TO THE EQUIPMENT INSTALLED UNDER THIS CONTRACT, INCLUDING PARTS LISTS, WIRING DIAGRAMS, MAINTENANCE AND OPERATION MANUALS AND WARRANTIES CUSTOMARILY SUPPLIED BY MANUFACTURERS FOR EQUIPMENT INCORPORATED IN THIS WORK.

THE CONTRACTOR SHALL GIVE PHYSICAL DEMONSTRATION AND VERBAL INSTRUCTIONS FOR PROPER OPERATION AND MAINTENANCE OF EQUIPMENT TO THE OWNER OR HIS DESIGNATED REPRESENTATIVE; SCHEDULE THESE DEMONSTRATIONS AND INSTRUCTIONS AT THE OWNER'S CONVENIENCE.

LAYOUT & COORDINATION:

INSTALLERS ARE EXPECTED TO COORDINATE IN ORDER TO AVOID INTERFERENCE BETWEEN TRADES. THE INSTALLERS ARE EXPECTED TO VERIFY CRITICAL DIMENSIONS AND FIELD FABRICATE PIPING AS NECESSARY TO ACCOMMODATE CONDITIONS. INSTALLERS ARE EXPECTED TO INSTALL EQUIPMENT SUCH THAT PROPER MAINTENANCE CLEARANCES ARE MAINTAINED FOR EQUIPMENT OF ALL TRADES.

THE CONTRACTOR SHALL TAKE FULL AND COMPLETE RESPONSIBILITY FOR AVOIDING CONFLICTS WITH EXISTING BUILDING STRUCTURE, PIPING AND EQUIPMENT. BEFORE FABRICATING ANY DUCTWORK OR PIPING, FIELD VERIFY THE SPACE AVAILABLE WHILE MAINTAINING REQUIRED ACCESS TO EQUIPMENT FROM ALL TRADES. ANY CHANGES REQUIRED SO THAT DUCTWORK OR PIPING WILL FIT EXISTING CONDITIONS AND ANY DUCTWORK OR PIPING RENDERED AS SCRAP BY FAILING TO VERIFY FIELD CONDITIONS WILL BE AT THE EXPENSE OF THE CONTRACTOR.

HAZARDOUS MATERIALS:

CONTRACTORS ARE EXPECTED TO NOTIFY THE OWNER WHENEVER THEY DISCOVER THAT THEIR WORK WILL EXPOSE THEM TO ANY MATERIALS THAT ARE THE LEAST BIT SUSPICIOUS. REMOVAL OF CONTAMINATED MATERIALS WILL BE THE RESPONSIBILITY OF THE OWNER. HOWEVER THE CONTRACTOR IS RESPONSIBLE TO INSPECT FUTURE WORK AREAS IN A TIMELY FASHION SO AS NOT TO BE HELD UP WAITING FOR ABATEMENT.

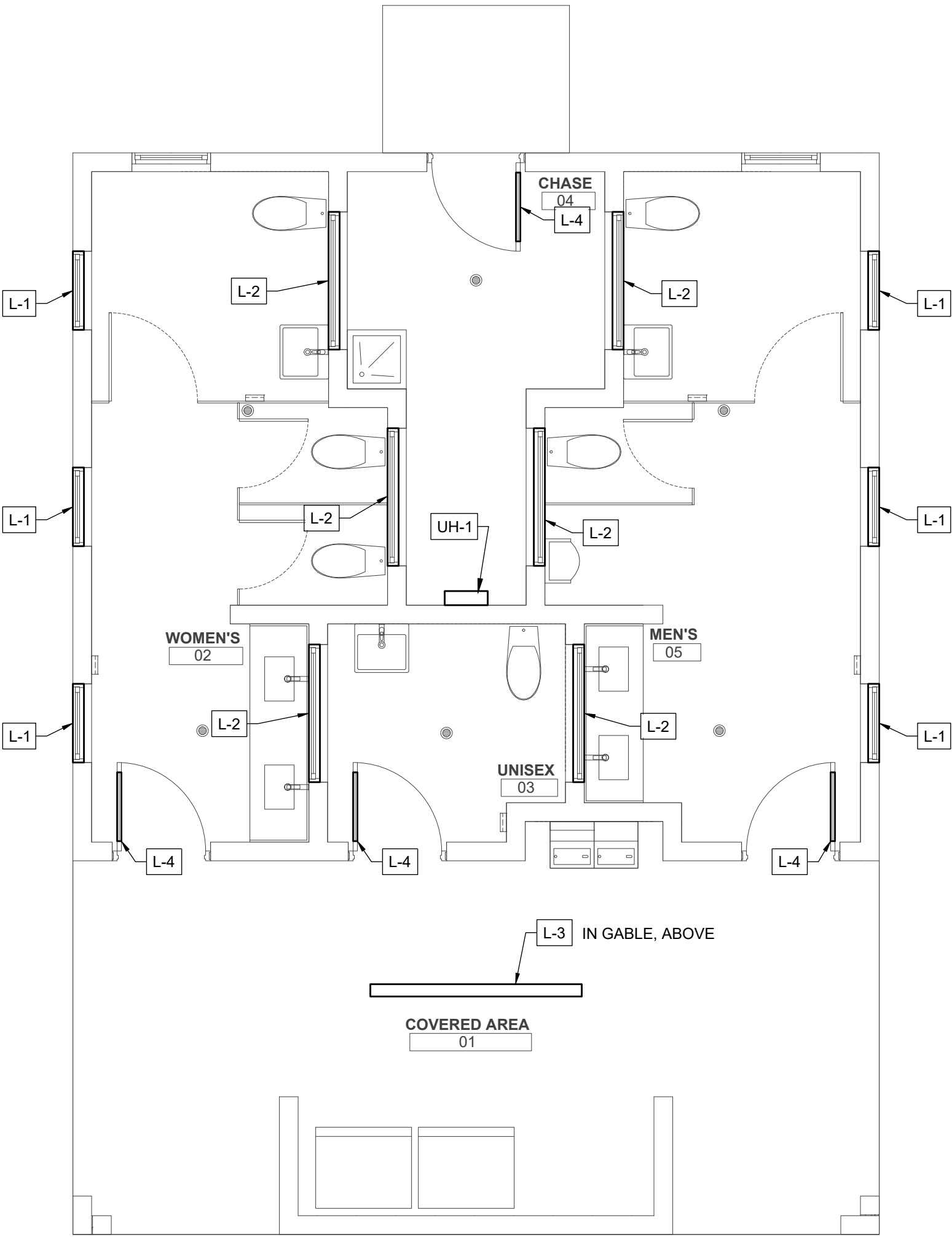
LOUVER SCHEDULE					
DESIGNATION		L1	L2	L3	L4
SERVICE		VENTILATION	VENTILATION	VENTILATION	VENTILATION
NOMINAL SIZE (WXH)	IN	2'-8" x 4'-0"	4'-8" X 2'-0"	12'-0" X 2'-0"	**
FREE AREA (DESIGN MINIMUM)	%	47%	24%	56%	**
FREE AREA	SQ FT	5 SF	2.2 SF	4.3	**
DEPTH	IN	5	4	5	**
TYPE		EXTERIOR	INTERIOR	TRIANGULAR	**
MATERIAL/CONSTRUCTION		ALUMINUM	ALUMINUM	ALUMINUM	ALUMINUM
BASIS OF DESIGN MANUFACTURER		RUSKIN	RUSKIN	RUSKIN	**
BASIS OF DESIGN MODEL		EME520MD	ELF40V	EME520MD	**
NOTES		1 - 6	1, 2, 4, 5, 6	1-6	7
NOTES: 1. CONSTRUCTED OF 6063T6 EXTRUDED ALUMINUM. BLADE CONSTRUCTION 6063T6, POSITIONED HORIZONTALLY. 2. EXPANDED, FLATTENED ALUMINUM BIRD SCREEN. 3. MIAMI-DADE CERTIFIED. 4. MILL FINISH 5. SIGHT PROOF, CHEVRON BLADES 6. INCLUDE INSECT SCREEN 7. SEE ARCHITECT'S DOOR SCHEDULE FOR INFORMATION					

UNIT HEATER SCHEDULE		
DESIGNATION		UH-1
BLDG/ROOM SERVED		CHASE
UNIT TYPE		ELECTRIC, HEAVY DUTY
MOUNT TYPE & LOCATION		WALL-MOUNT
MANUFACTURER		TRANE
UNIT MODEL		UHWA-021A2AT2
SUPPLY AIR	CFM	245
HEATING CAPACITY	MBH/KW	6.8/2.0
TEMPERATURE RISE	°F	27
ELECTRICAL CHARACTERISTICS	V/Ø/HZ	240 / 1 / 60
ELECTRICAL CURRENT	AMPS	8
UNIT DIMENSIONS	IN	21.5"H x 17.5"W x 5.75"D
UNIT WEIGHT	LB	41
NOTES: 1. FACTORY INSTALLED AND WIRED FAN, AND THERMOSTAT. 2. EXTERNAL DISCONNECT BY OTHERS. 3. SURFACE MOUNT WALL BOX. 4. T'STAT SET TO 40°F (ADJ) WITH LOCAL CONTROL ONLY		

1

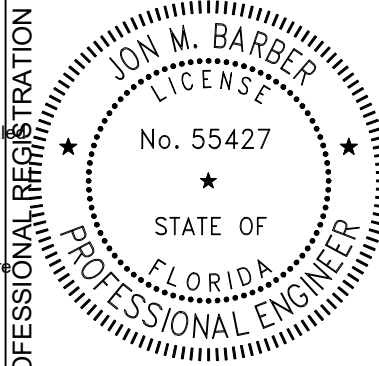
FLOOR PLAN

SCALE: 1/4" = 1'-0"



- NEW WORK NOTES:
- 1 THE FACILITY IS TO BE NATURALLY VENTILATED. SEE CALCULATION TABLE ON LS001.
- 2 COORDINATE LOUVERS WITH ARCHITECTURAL SHEETS. INSTALL PER MANUFACTURER'S INSTRUCTIONS.

This item has been digitally signed and sealed by Jon Barber, PE on 2/24/25
Printed copies of this document are not considered signed and sealed and the signature must be verified on any electronic copies.



CAMP HELEN STATE PARK

SHEET TITLE
MECHANICAL NOTES, SCHEDULE, & PLAN

PROJECT TITLE
PARK IMPROVEMENT

SHEET NO.

M100

Department of Environmental Protection
Division of Recreation and Parks
Bureau of Design and Construction
3800 Commonwealth Blvd., Tallahassee, FL 32399 (850) 245-2300

McGinniss + FLEMING
ENGINEERING
Consultant:
JON BARBER, PE, EIT 7
380 COMMONWEALTH BLVD., SUITE 200
TALLAHASSEE, FL 32301
WWW.MCFE.COM