

PLUMBING NOTES

GENERAL CONDITIONS

1. SEE SPECIFICATIONS FOR ADDITIONAL REQUIREMENTS.
2. CONTRACTOR SHALL FURNISH ALL LABOR, MATERIALS, EQUIPMENT AND INCIDENTALS REQUIRED TO COMPLETE ALL WORK SHOWN ON THE CONTRACT DRAWINGS.
3. ALL CONSTRUCTION SHALL CONFORM TO APPLICABLE CODE STANDARDS INCLUDING:

FLORIDA BUILDING CODE, BUILDING, 8TH EDITION (2023)  
FLORIDA BUILDING CODE, PLUMBING, 8TH EDITION (2023)  
FLORIDA BUILDING CODE, MECHANICAL, 8TH EDITION (2023)  
FLORIDA BUILDING CODE, ENERGY CONSERVATION CODE, 8TH EDITION (2023)  
NFPA 70, NATIONAL ELECTRIC CODE (NEC) 2020 EDITION  
STATE AND LOCAL CODES AND ORDINANCES
4. THE BIDDERS SHALL INSPECT THE PRESENT JOB SITE CONDITIONS BEFORE PREPARING A BID. THE SUBMISSION OF A BID WILL BE CONSIDERED EVIDENCE THAT SUCH A VISIT AND INSPECTION WAS PERFORMED BY THE BIDDER AND THAT HE TAKES FULL RESPONSIBILITY FOR ALL FACTORS GOVERNING HIS WORK.
5. THE CONTRACTOR IS EXPECTED TO PROVIDE PROFESSIONAL WORK PERFORMED IN ACCORDANCE WITH INDUSTRY STANDARDS AND GOOD PRACTICE. WORK SHALL CONFORM TO THE MANUFACTURER'S INSTRUCTIONS AND THE REQUIREMENTS OF THE LOCAL HEALTH DEPARTMENT.
6. THE CONTRACTORS ARE EXPECTED TO FIELD VERIFY ALL DIMENSIONS. CONTRACTORS ARE EXPECTED TO ACCOUNT FOR FIELD CONDITIONS. CONTRACTORS ARE EXPECTED TO COORDINATE IN ORDER TO AVOID INTERFERENCE BETWEEN TRADES. CONTRACTORS ARE EXPECTED TO INSTALL EQUIPMENT SUCH THAT PROPER MAINTENANCE CLEARANCES ARE MAINTAINED FOR EQUIPMENT OF ALL TRADES. IF CHANGES TO THE CONTRACT DOCUMENTS ARE NECESSARY TO AVOID CONFLICTS, THE CONTRACTOR IS RESPONSIBLE FOR REQUESTING CLARIFICATION IN A TIMELY FASHION. THE CONTRACTOR SHALL BE RESPONSIBLE FOR ANY DEFICIENCIES ASSOCIATED WITH WORK PERFORMED BEFORE OBTAINING CLARIFICATION.
7. UPON COMPLETION OF THE WORK THE CONTRACTOR SHALL CLEAN SPACES THAT WERE OCCUPIED BY TEMPORARY WORK AND TEMPORARY FACILITIES. REMOVE DEBRIS, RUBBISH AND EXCESS MATERIALS FROM THE SITES. REPAIR DAMAGES CAUSED BY INSTALLATION OR USE OF TEMPORARY FACILITIES.

GENERAL PLUMBING NOTES

1. PLUMBING PLANS ARE SCHEMATIC. LOCATE PIPING TO AVOID FIELD INTERFERENCES. CHANGES IN THE PIPING SCHEMATIC REQUIRE PRIOR APPROVAL OF THE ENGINEER.
2. TRANSITION CONNECTION BETWEEN SITE PIPING AND BUILDING PLUMBING SHALL OCCUR IN AN ACCESSIBLE GREEN SPACE.
3. THE CONTRACTOR IS EXPECTED TO VERIFY DIMENSIONS AND FIELD FABRICATE PIPING AS NECESSARY TO ACCOMMODATE CONDITIONS.
4. PRIOR TO ANY NEW WORK THE CONTRACTOR SHALL VERIFY BY ALL MEANS AVAILABLE THE DIRECTION OF FLOW OF ALL EXISTING PIPING THAT WILL BE TIED INTO FOR THE NEW WORK. REPORT TO THE ENGINEER ANY DIFFERENCES FROM WHAT THE CONTRACT DOCUMENTS SHOW.

MATERIALS AND DEVICES

1. ALL MATERIALS, EQUIPMENT AND APPARATUS COVERED BY THIS SPECIFICATION SHALL BE NEW, OF CURRENT MANUFACTURE.
2. SEE PROJECT SPECIFICATIONS FOR MATERIALS.
3. CONNECTION JOINTS BETWEEN PLASTIC AND METALLIC PIPE SHALL BE MADE WITH TRANSITION FITTING FOR THE SPECIFIC PURPOSE.
4. CONNECTIONS TO WATER HEATERS AND BETWEEN FERROUS AND NONFERROUS METALLIC PIPE SHALL BE MADE WITH DIELECTRIC FITTINGS.

PIPING NOTES

1. INSTALL GRAVITY LINES AT UNIFORM GRADES.
2. INSTALL SLEEVES AT ALL PENETRATIONS WHERE CONCRETE MIGHT CONTACT COPPER PIPING. PROVIDE SLEEVES AND SEAL ALL PENETRATIONS OF FULL HEIGHT WALLS AIR TIGHT. PROVIDE SLEEVES AT ALL PENETRATIONS OF FLOOR. PROVIDE POLY PIPE COVER OR INSULATION WHERE COPPER PIPING IS ENCASED WITHIN CMU WALLS.
3. LOCATE ALL VALVES AND OTHER DEVICES WHICH REQUIRE MAINTENANCE IN ACCESSIBLE LOCATIONS. PROVIDE ACCESS PANELS IF NECESSARY.
4. PIPING INSTALLATIONS ARE EXPECTED TO BE RIGID. SUPPORT AND SECURE PIPING IN ACCORDANCE WITH GOOD PRACTICE.
5. SEE SPECIFICATIONS FOR HOT WATER PIPING INSULATION REQUIREMENTS. PROFESSIONAL INSTALLATION IS EXPECTED.
6. LABEL ALL HOT, TEMPERED & COLD DOMESTIC WATER SUPPLY & RETURN PIPING AT EACH VALVE LOCATION & NO LESS THAN 20' O.C.
7. HOT WATER PIPE INSULATION SHALL BE RIGID GLASS FIBER INSULATION WITH A NOMINAL DENSITY OF 3 POUNDS PER CUBIC FOOT WITH A THERMAL CONDUCTIVITY BETWEEN 0.21 AND 0.28 AT 100 DEG F MEAN TEMPERATURE. INSULATION COVER SHALL BE AN ALL SERVICE JACKET WITH DOUBLE SELF-SEALING LAPS, WITH SELF-SEALING BUTT STRIPS. INSULATION THICKNESS SHALL BE ONE INCH (1") THICK FOR PIPE SIZES 3/4" TO 1-1/2", AND (1-1/2") THICK FOR PIPE SIZES 1-1/2" TO 4" PER FBC-PLUMBING 607.5 AND FBC-ENERGY CONSERVATION TABLE C403.2.10.

FIXTURES AND TRIM:

1. EQUIPMENT SHALL BE UNDAMAGED AND CLEANED.
2. ALL EXPOSED SINK AND LAVATORY DRAIN PIPING SHALL BE CHROME PLATED BRASS NO LESS THAN 17 GAUGE. TRAPS SHALL BE 17 GAUGE FULLY CAST BRASS WITH CLEANOUT PLUGS.
3. ESCUTCHEONS SHALL BE CHROME PLATED CAST BRASS WITH SET SCREW.

CLOSEOUT, TESTING AND INSPECTIONS

1. COORDINATE INSPECTIONS WITH THE SPECIFICATIONS.
2. ALL DOMESTIC WATER PIPING SHALL BE STERILIZED IN ACCORDANCE WITH THE PROCEDURE OUTLINED IN THE FBC, PLUMBING CODE.
3. ALL WATER SUPPLY PIPING SHALL BE LEAK TESTED IN ACCORDANCE WITH THE FBC, PLUMBING CODE BUT NOT LESS THAN 100 PSI.
4. ALL WASTE AND VENT PIPING SHALL BE LEAK TESTED IN ACCORDANCE WITH THE FBC, PLUMBING CODE BUT NOT LESS THAN 10' OF HEAD.
5. CONTRACTOR SHALL CAMERA SEWER LINES AND PROVIDE SMOKE TEST OF THE ENTIRE WASTE AND VENT SYSTEM.
6. NO PIPING SHALL BE COVERED OR CLOSED UP BEFORE INSPECTION AND APPROVAL. PROVIDE TEST TEES AT CONNECTION TO EXISTING AT EACH FLOOR & AS NEEDED FOR COMPLETE TESTING.

PLUMBING LEGEND

- 4"S

EXISTING SANITARY PIPING
- 1"V

EXISTING VENT PIPING
- 3"WM

EXISTING WM PIPING
- 1/2"CW

EXISTING CW PIPING
- EXISTING PIPING/EQUIPMENT TO BE REMOVED OR DEMOLISHED
- 4"S

SANITARY PIPING
- 2"V

VENT PIPING
- 3/8"

NATURAL GAS PIPING
- 3/4"CW

CW PIPING
- 3"CD

CONDENSATE PIPING
- 1/2"U.N.O.

TRAP PRIMER LINE ( 1/2" U.N.O.)
- CAP
- ELBOW TURNED UP
- ELBOW TURNED DOWN
- TEE, OUTLET UP
- TEE, OUTLET DOWN
- BALL VALVE
- PRESSURE REGULATOR
- FIRE ALARM SHUT-OFF VALVE
- SWING CHECK VALVE
- WATER HAMMER ARRESTER
- CONNECTION, NEW TO EXISTING
- LIMIT OF DEMOLITION

ABBREVIATIONS

- AC

ABOVE CEILING
- AF

ABOVE FLOOR
- AFF

ABOVE FINISHED FLOOR
- AFG

ABOVE FINISHED GRADE
- AS

ABOVE SLAB
- BFF

BELOW FINISHED FLOOR
- BFP

BACKFLOW PREVENTER
- BG

BELOW GRADE
- BS

BELOW SLAB
- CA

COMPRESSED AIR
- CO

CLEANOUT
- CS

CUP SINK
- CW

COLD WATER
- CWS

COLD WATER SERVICE
- DN

DOWN
- EXIST

EXISTING
- FCO

FLOOR CLEANOUT
- FD

FLOOR DRAIN
- HD

HUB DRAIN
- HW

HOT WATER
- HWR

HOT WATER RETURN
- G

NATURAL GAS
- INV EL

INVERT ELEVATION
- N.C.

NORMALLY CLOSED
- N.O.

NORMALLY OPEN
- N.S.

NO SUBSTITUTES
- N/A

NOT APPLICABLE
- PDI

PLUMBING DRAINAGE INSTITUTE
- PH

PHASE
- S

SOIL
- SAN

SANITARY
- SK

SINK
- TP

TRAP PRIMER
- TYP

TYPICAL
- UDS

UTILITY DISTRIBUTION SYSTEM
- U.N.O.

UNLESS NOTED OTHERWISE
- V

VENT
- W

WASTE
- WCO

WALL CLEANOUT
- WM

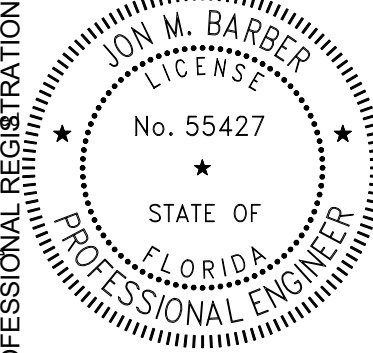
WATER MAIN
- XT

EXPANSION TANK

Department of Environmental Protection  
Division of Recreation and Parks  
Bureau of Design and Construction  
3800 Commonwealth Blvd., Tallahassee, FL 32399 (850) 245-2300

JON BARBER, P.E. 215436  
FLORIDA PROFESSIONAL ENGINEER  
NO. 61307C-N3803  
ISSUED: 02/24/2025 100% PLANS  
COMP. FILE NO.: 21-5436  
STATE PROJECT NO.: 61307C-N3803

McGinniss + Fleming Engineering  
CONSULTANT: JON BARBER, P.E.  
215436  
FLORIDA PROFESSIONAL ENGINEER  
NO. 61307C-N3803  
ISSUED: 02/24/2025 100% PLANS  
COMP. FILE NO.: 21-5436  
STATE PROJECT NO.: 61307C-N3803



CAMP HELEN STATE PARK  
SHEET TITLE  
PLUMBING NOTES AND LEGEND  
PROJECT TITLE  
PARK IMPROVEMENT

SHEET NO.  
P100

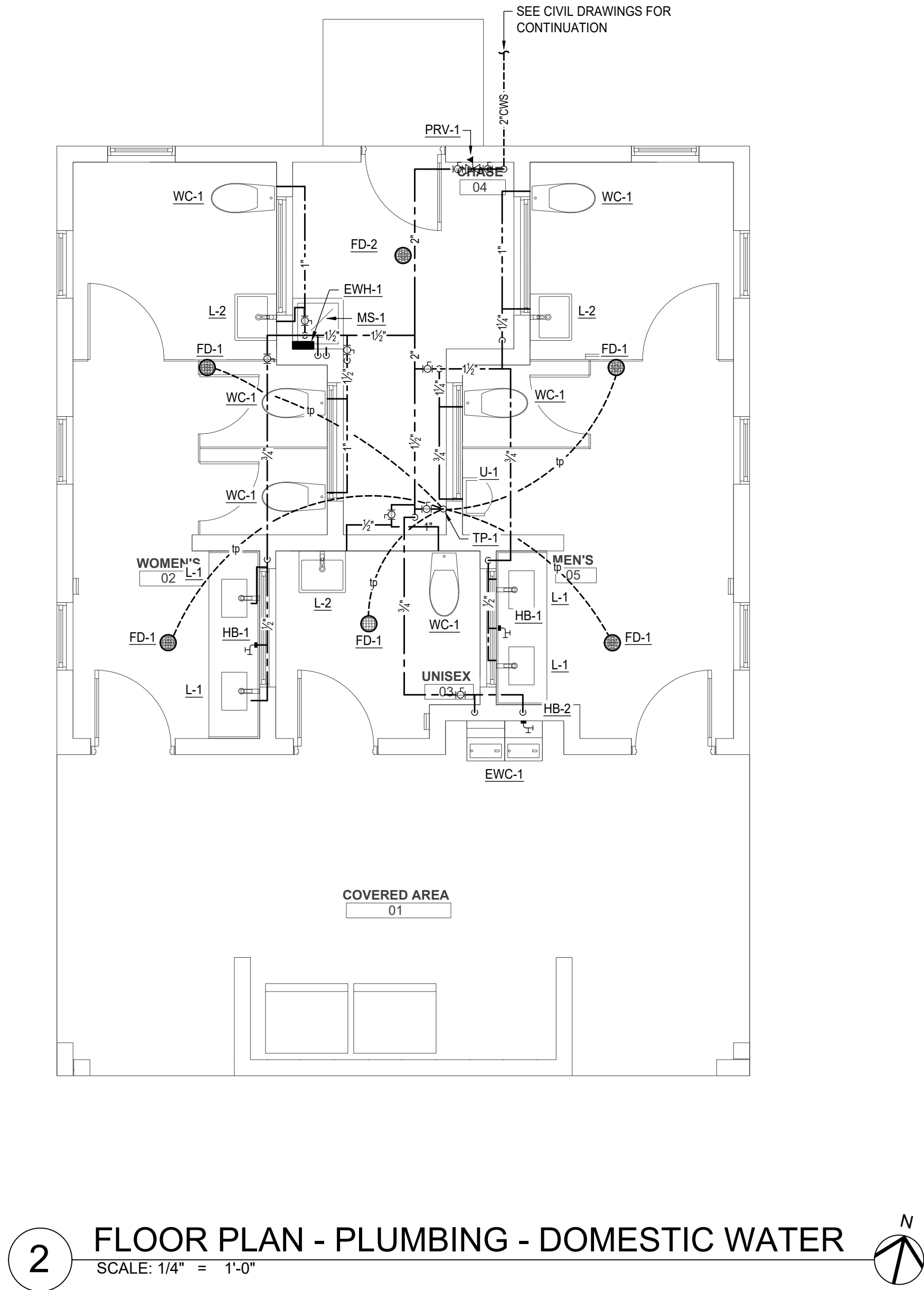
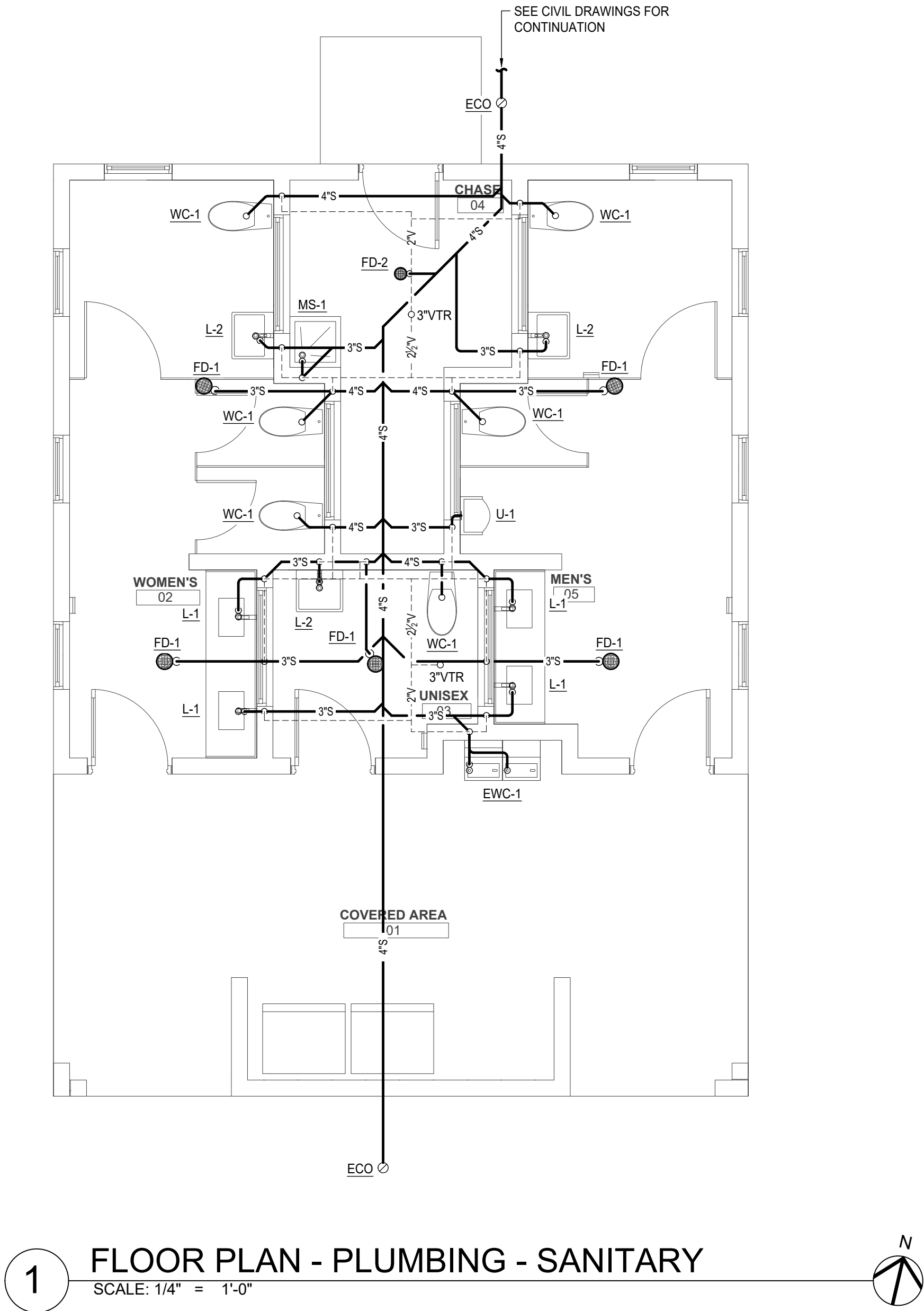
DRAIN SCHEDULE (BASIS OF DESIGN)						
TYPE	DESCRIPTION	MODEL	TRIM & ACCESSORIES	FIXTURE CONNECTIONS		
				CW	WASTE	VENT
FD-1	STAINLESS STEEL ADJUSTABLE FLOOR DRAIN WITH ANCHOR FLANGE AND AUXILIARY TRAP PRIMER FITTING. ROUND TOP, MEDIUM DUTY.	ZURN Z1726	STAINLESS STEEL BODY W/ FLASHING COLLAR AND ADJUSTABLE 8" SQUARE STAINLESS STEEL STRAINER HEAD. PRECISION PLUMBING PRODUCTS PVC TRAP PRIMER FITTING WITH ½" NPT TAPPING.	1/2"	3"	2"
FD-2	STAINLESS STEEL ADJUSTABLE FLOOR DRAIN WITH ANCHOR FLANGE. ROUND TOP, MEDIUM DUTY.	ZURN Z1726	STAINLESS STEEL BODY W/ FLASHING COLLAR AND ADJUSTABLE 7" ROUND STAINLESS STEEL STRAINER HEAD, STAINLESS STEEL SEDIMENT BUCKET. PROVIDE J.R. SMITH 2692 TRAP SEAL IN LIEU OF TRAP PRIMER CONNECTION.		3"	2"

TANKLESS ELECTRIC WATER HEATER SCHEDULE									
TYPE	MANUFACTURE R/ MODEL NO.	TEMP. RISE @ GPM	MAXIMUM FLOW (GPM)	ACTIVATION GPM	KW	VOLTS/PH	AMPS	RECOMMENDED WIRE SIZE	NOTES
EW-H-1	EEMAX PRO08240	55°@1.0 36°@1.5	5.0	0.3	8.0	240 / 1	33.0	8 AWG	TANKLESS WATER HEATER TO BE MOUNTED VERTICALLY ON WALL ABOVE MOP SINK WITH THE HW OUTLET ON THE BOTTOM. ADJUSTABLE OUTLET TEMPERATURE SET TO 110°. PROVIDE W/ EEMAX INLINE FLOW REGULATOR. INSULATE ALL PIPE, CONNECTIONS, VALVES, AND FITTINGS.

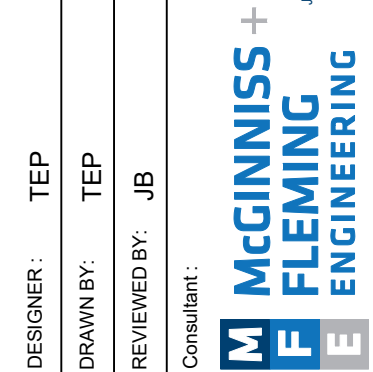
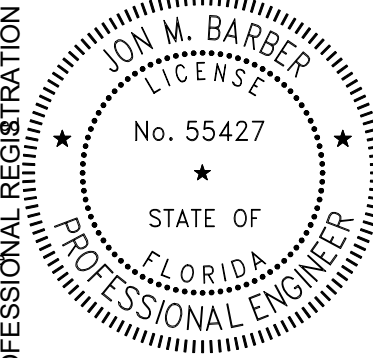
PLUMBING FIXTURE SCHEDULE							
TYPE	DESCRIPTION	MODEL	TRIM & ACCESSORIES	FIXTURE CONNECTIONS			
				CW	HW	WASTE	VENT
WC-1	WATER CLOSET - FLOOR MOUNT, WHITE VITREOUS CHINA, ELONGATED BOWL, SIPHON JET FLUSH, 1½" TOP SPUD, 11" ROUGH-IN, 16½" RIM HEIGHT, 1.6 GALLON FLUSH, MOUNT PER ADA REQUIREMENTS.	KOHLER K-96058 (N.S.)	SLOAN 111-1.6 EXPOSED FLUSH VALVE, DIAPHRAGM-TYPE, 1.6 GALLON FLUSH, CHROME PLATED, BEMIS 1955SSCT ELONGATED SOLID PLASTIC SELF-SUSTAINING OPEN FRONT SEAT WITH CHECK HINGE AND BOLT CAPS. ESCUTCHEON PLATE W/ SET SCREW.	1"		4"	2"
U-1	URINAL - WALL MOUNT, WHITE VITREOUS CHINA, ¾" TOP SPUD, 0.5 GALLON FLUSH, 14½" EXTENDED RIM. MOUNT PER ADA REQUIREMENTS.	KOHLER K-5016-ET (N.S.)	SLOAN REGAL 186 EXPOSED MANUAL FLUSH VALVE, 0.5 GALLON FLUSH, DIAPHRAGM VALVE. TOP SPUD.	3/4"		2"	2"
L-1	20½"x17½" DROP-IN VITREOUS CHINA LAVATORY, 3- HOLE INSTALLATION, ADA COMPLIANT.	KOHLER K-2196-4 (N.S.)	DELTA 501LF-HGMHDF SINGLE-HANDLED ADA LAVATORY FAUCET, 3-HOLE MOUNT. CHROME PLATED SOLID BRASS CONSTRUCTION, VANDAL RESISTANT LEVER HANDLE. 0.5GPM. WITHOUT POP-UP ASSEMBLY. METAL GRID STRAINER. MCGUIRE 1-1/4" TRAP W/ PRODRAIN OFFSET ASSEMBLY, PRE-WRAPPED CHROME PLATED HEAVY CAST BRASS ADJUSTABLE P-TRAP W/ CLEANOUT, TAILPIECE, SLIP NUTS, 17A. SEAMLESS TUBULAR BRASS WALL BEND. MCGUIRE 167LK ANGLE SUPPLY STOPS, FLEXIBLE CHROME PLATED RISERS, CHROME ESCUTCHEON PLATES W/ SET SCREWS.	1/2"		2"	1 1/2"
L-2	21½"x18½" WALL-HUNG VITREOUS CHINA LAVATORY, 3-HOLE INSTALLATION, ADA COMPLIANT.	KOHLER K-2005-0 (N.S.)	DELTA 501LF-HGMHDF SINGLE-HANDLED ADA LAVATORY FAUCET, 3-HOLE MOUNT. CHROME PLATED SOLID BRASS CONSTRUCTION, VANDAL RESISTANT LEVER HANDLE. 0.5GPM. WITHOUT POP-UP ASSEMBLY. METAL GRID STRAINER. MCGUIRE 1-1/4" TRAP W/ PRODRAIN OFFSET ASSEMBLY, PRE-WRAPPED CHROME PLATED HEAVY CAST BRASS ADJUSTABLE P-TRAP W/ CLEANOUT, TAILPIECE, SLIP NUTS, 17A. SEAMLESS TUBULAR BRASS WALL BEND. MCGUIRE 167LK ANGLE SUPPLY STOPS, FLEXIBLE CHROME PLATED RISERS, CHROME ESCUTCHEON PLATES W/ SET SCREWS.	1/2"		2"	1 1/2"
MS-1	24"x24"x10" HIGH IMPACT RESISTANT STRUCTURAL FIBERGLASS MOP SERVICE BASIN. COMPLETE WITH 3" PVC DRAIN.	MUSTEE 63M	T&S BRASS B-0665-BSTR FAUCET W/ VACUUM BREAKER MUSTEE63 700 HOSE AND HOSE BRACKET MUSTEE 65 600 MOP HANGER MUSTEE 63 403 STAINLESS STEEL BUMPER GUARD MUSTEE 67 2424 STAINLESS STEEL WALL GUARD	1/2"	1/2"	3"	2"
EWC-1	WALL MOUNTED, VANDAL RESISTANT, BI-LEVEL ADA WATER COOLER. FROST RESISTANT, NON-FILTERED, REFRIGERATED, STAINLESS STEEL FINISH. DELIVERS 8 GPH OF 50 DEGREE DRINKING WATER. SEE ARCHITECTURAL PLANS FOR MOUNTING HEIGHT.	ELKAY VRCTLFR8SC	McGUIRE 8872 1-1/4" HEAVY CAST BRASS POLISHED CHROME 17 GA. ADJUSTABLE P-TRAP WITH CLEANOUT, SLIP NUTS, AND SEAMLESS TUBULAR BRASS WALL BEND. McGUIRE 2165 1/2" IPS 3/8" O.D. ANGLE SUPPLIES AND STOPS, 12" FLEXIBLE CHROME PLATED COPPER RISERS, STEEL WALL MOUNT BRACKET. PROVIDE WITH CANE APRON - ELKAY 98324C.	0'-0 1/2"		0'-2"	0'-1 1/2"
HB-1	BRASS ANTI-SIPHON WALL FAUCET.	T&S BRASS B-0720-POL	1/2" IPS FEMALE INLET, TEE KEY HANDLE, ATMOSPHERIC VACUUM BREAKER, 3/4" GARDEN HOSE OUTLET.	1/2"			This item has been digitally signed and sealed by <b>Jon Barber</b> , 2/24/25. Printed copies of this document are not considered signed and the seal must be verified on electronic copies.
HB-2	BRASS ANTI-SIPHON WALL FAUCET.	WOODFORD MODEL 24	3/4" NPT MALE INLET, LOOSE TEE KEY. ADJUSTABLE PACKING NUT WITH DEEP STEM GUARD.	3/4"			
TP-1	TRAP PRIMER VALVE, FLOW ACTIVATED	PPP PRO1-500	MIN. ACTIVATION FLOW RATE OF 0.25 GPM AT 20 PSIG	1/2"			
WCO	CLEANOUT TEE, DURA-COATED CAST IRON BODY, GAS AND WATERTIGHT ABS TAPERED THREAD PLUG, AND ROUND, SMOOTH STAINLESS STEEL WALL ACCESS COVER WITH SECURING SCREW.	ZURN Z1446	POLISHED BRONZE COVER. BRONZE PLUG.		SEE PLANS FOR SIZES		
FCO	ADJUSTABLE FLOOR CLEANOUT, PVC OR ABS BODY WITH ADJUSTABLE PVC HEAD ASSEMBLY, NICKEL BRONZE FRAME AND COVER, AND ABS TAPER THREAD PLUG	ZURN CO2452	FLASHING CLAMP AND FLASHING FLANGE, BRONZE PLUG.		SEE PLANS FOR SIZES		
ECO	ADJUSTABLE FLOOR CLEANOUT, PVC OR ABS BODY WITH ADJUSTABLE PVC HEAD ASSEMBLY, NICKEL BRONZE FRAME AND COVER, AND ABS TAPER THREAD PLUG	ZURN CO2452	FLASHING CLAMP AND FLASHING FLANGE, BRONZE PLUG.		SEE PLANS FOR SIZES		

SHEET NO.	CAMP HELEN STATE PARK	<div>PROFESSIONAL REGISTRATION</div> <div><div>STATE OF FLORIDA</div><div>PROFESSIONAL ENGINEER</div></div> <div><div>★</div><div>★</div><div>★</div></div> <div><div>★</div><div>★</div><div>★</div></div> <div><div>★</div><div>★</div><div>★</div></div> <div><div>★</div><div>★</div><div>★</div></div> <div><div>★</div><div>★</div><div>★</div></div> <div><div>★</div><div>★</div><div>★</div></div> <div><div>★</div><div>★</div><div>★</div></div> <div><div>★</div><div>★</div><div>★</div></div> <div><div>★</div><div>★</div><div>★</div></div> <div><div>★</div><div>★</div><div>★</div></div> <div><div>★</div><div>★</div><div>★</div></div> <div><div>★</div><div>★</div><div>★</div></div> <div><div>★</div><div>★</div><div>★</div></div> <div><div>★</div><div>★</div><div>★</div></div> <div><div>★</div><div>★</div><div>★</div></div> <div><div>★</div><div>★</div><div>★</div></div> <div><div>★</div><div>★</div><div>★</div></div> <div><div>★</div><div>★</div><div>★</div></div> <div><div>★</div><div>★</div><div>★</div></div> <div><div>★</div><div>★</div><div>★</div></div> <div><div>★</div><div>★</div><div>★</div></div> <div><div>★</div><div>★</div><div>★</div></div> <div><div>★</div><div>★</div><div>★</div></div> <div><div>★</div><div>★</div><div>★</div></div> <div><div>★</div><div>★</div><div>★</div></div> <div><div>★</div><div>★</div><div>★</div></div> <div><div>★</div><div>★</div><div>★</div></div> <div><div>★</div><div>★</div><div>★</div></div> <div><div>★</div><div>★</div><div>★</div></div> <div><div>★</div><div>★</div><div>★</div></div> <div><div>★</div><div>★</div><div>★</div></div> <div><div>★</div><div>★</div><div>★</div></div> <div><div>★</div><div>★</div><div>★</div></div> <div><div>★</div><div>★</div><div>★</div></div> <div><div>★</div><div>★</div><div>★</div></div> <div><div>★</div><div>★</div><div>★</div></div> <div><div>★</div><div>★</div><div>★</div></div> <div><div>★</div><div>★</div><div>★</div></div> <div><div>★</div><div>★</div><div>★</div></div> <div><div>★</div><div>★</div><div>★</div></div> <div><div>★</div><div>★</div><div>★</div></div> <div><div>★</div><div>★</div><div>★</div></div> <div><div>★</div><div>★</div><div>★</div></div> <div><div>★</div><div>★</div><div>★</div></div> <div><div>★</div><div>★</div><div>★</div></div> <div><div>★</div><div>★</div><div>★</div></div> <div><div>★</div><div>★</div><div>★</div></div> <div><div>★</div><div>★</div><div>★</div></div> <div><div>★</div><div>★</div><div>★</div></div> <div><div>★</div><div>★</div><div>★</div></div> <div><div>★</div><div>★</div><div>★</div></div> <div><div>★</div><div>★</div><div>★</div></div> <div><div>★</div><div>★</div><div>★</div></div> <div><div>★</div><div>★</div><div>★</div></div> <div><div>★</div><div>★</div><div>★</div></div> <div><div>★</div><div>★</div><div>★</div></div> <div><div>★</div><div>★</div><div>★</div></div> <div><div>★</div><div>★</div><div>★</div></div> <div><div>★</div><div>★</div><div>★</div></div> <div><div>★</div><div>★</div><div>★</div></div> <div><div>★</div><div>★</div><div>★</div></div> <div><div>★</div><div>★</div><div>★</div></div> <div><div>★</div><div>★</div><div>★</div></div> <div><div>★</div><div>★</div><div>★</div></div> <div><div>★</div><div>★</div><div>★</div></div> <div><div>★</div><div>★</div><div>★</div></div> <div><div>★</div><div>★</div><div>★</div></div> <div><div>★</div><div>★</div><div>★</div></div> <div><div>★</div><div>★</div><div>★</div></div> <div><div>★</div><div>★</div><div>★</div></div> <div><div>★</div><div>★</div><div>★</div></div> <div><div>★</div><div>★</div><div>★</div></div> <div><div>★</div><div>★</div><div>★</div></div> <div><div>★</div><div>★</div><div>★</div></div> <div><div>★</div><div>★</div><div>★</div></div> <div><div>★</div><div>★</div><div>★</div></div> <div><div>★</div><div>★</div><div>★</div></div> <div><div>★</div><div>★</div><div>★</div></div> <div><div>★</div><div>★</div><div>★</div></div> <div><div>★</div><div>★</div><div>★</div></div> <div><div>★</div><div>★</div><div>★</div></div> <div><div>★</div><div>★</div><div>★</div></div> <div><div>★</div><div>★</div><div>★</div></div> <div><div>★</div><div>★</div><div>★</div></div> <div><div>★</div><div>★</div><div>★</div></div> <div><div>★</div><div>★</div><div>★</div></div> <div><div>★</div><div>★</div><div>★</div></div> <div><div>★</div><div>★</div><div>★</div></div> <div><div>★</div><div>★</div><div>★</div></div> <div><div>★</div><div>★</div><div>★</div></div> <div><div>★</div><div>★</div><div>★</div></div> <div><div>★</div><div>★</div><div>★</div></div> <div><div>★</div><div>★</div><div>★</div></div> <div><div>★</div><div>★</div><div>★</div></div> <div><div>★</div><div>★</div><div>★</div></div> <div><div>★</div><div>★</div><div>★</div></div> <div><div>★</div><div>★</div><div>★</div></div> <div><div>★</div><div>★</div><div>★</div></div> <div><div>★</div><div>★</div><div>★</div></div> <div><div>★</div><div>★</div><div>★</div></div> <div><div>★</div><div>★</div><div>★</div></div> <div><div>★</div><div>★</div><div>★</div></div> <div><div>★</div><div>★</div><div>★</div></div> <div><div>★</div><div>★</div><div>★</div></div> <div><div>★</div><div>★</div><div>★</div></div> <div><div>★</div><div>★</div><div>★</div></div> <div><div>★</div><div>★</div><div>★</div></div> <div><div>★</div><div>★</div><div>★</div></div> <div><div>★</div><div>★</div><div>★</div></div> <div><div>★</div><div>★</div><div>★</div></div> <div><div>★</div><div>★</div><div>★</div></div> <div><div>★</div><div>★</div><div>★</div></div> <div><div>★</div><div>★</div><div>★</div></div> <div><div>★</div><div>★</div><div>★</div></div> <div><div>★</div><div>★</div><div>★</div></div> <div><div>★</div><div>★</div><div>★</div></div> <div><div>★</div><div>★</div><div>★</div></div> <div><div>★</div><div>★</div><div>★</div></div> <div><div>★</div><div>★</div><div>★</div></div> <div><div>★</div><div>★</div><div>★</div></div> <div><div>★</div><div>★</div><div>★</div></div> <div><div>★</div><div>★</div><div>★</div></div> <div><div>★</div><div>★</div><div>★</div></div> <div><div>★</div><div>★</div><div>★</div></div> <div><div>★</div><div>★</div><div>★</div></div> <div><div>★</div><div>★</div><div>★</div></div> <div><div>★</div><div>★</div><div>★</div></div> <div><div>★</div><div>★</div><div>★</div></div> <div><div>★</div><div>★</div><div>★</div></div> <div><div>★</div><div>★</div><div>★</div></div> <div><div>★</div><div>★</div><div>★</div></div> <div><div>★</div><div>★</div><div>★</div></div> <div><div>★</div><div>★</div><div>★</div></div> <div><div>★</div><div>★</div><div>★</div></div> <div><div>★</div><div>★</div><div>★</div></div> <div><div>★</div><div>★</div><div>★</div></div> <div><div>★</div><div>★</div><div>★</div></div> <div><div>★</div><div>★</div><div>★</div></div> <div><div>★</div><div>★</div><div>★</div></div> <div><div>★</div><div>★</div><div>★</div></div> <div><div>★</div><div>★</div><div>★</div></div> <div><div>★</div><div>★</div><div>★</div></div> <div><div>★</div><div>★</div><div>★</div></div> <div><div>★</div><div>★</div><div>★</div></div> <div><div>★</div><div>★</div><div>★</div></div> <div><div>★</div><div>★</div><div>★</div></div> <div><div>★</div><div>★</div><div>★</div></div> <div><div>★</div><div>★</div><div>★</div></div> <div><div>★</div><div>★</div><div>★</div></div> <div><div>★</div><div>★</div><div>★</div></div> <div><div>★</div><div>★</div><div>★</div></div> <div><div>★</div><div>★</div><div>★</div></div> <div><div>★</div><div>★</div><div>★</div></div> <div><div>★</div><div>★</div><div>★</div></div> <div><div>★</div><div>★</div><div>★</div></div> <div><div>★</div><div>★</div><div>★</div></div> <div><div>★</div><div>★</div><div>★</div></div> <div><div>★</div><div>★</div><div>★</div></div> <div><div>★</div><div>★</div><div>★</div></div> <div><div>★</div><div>★</div><div>★</div></div> <div><div>★</div><div>★</div><div>★</div></div> <div><div>★</div><div>★</div><div>★</div></div> <div><div>★</div><div>★</div><div>★</div></div> <div><div>★</div><div>★</div><div>★</div></div> <div><div>★</div><div>★</div><div>★</div></div> <div><div>★</div><div>★</div><div>★</div></div> <div><div>★</div><div>★</div><div>★</div></div> <div><div>★</div><div>★</div><div>★</div></div> <div><div>★</div><div>★</div><div>★</div></div> <div><div>★</div><div>★</div><div>★</div></div> <div><div>★</div><div>★</div><div>★</div></div> <div><div>★</div><div>★</div><div>★</div></div> <div><div>★</div><div>★</div><div>★</div></div> <div><div>★</div><div>★</div><div>★</div></div> <div><div>★</div><div>★</div><div>★</div></div> <div><div>★</div><div>★</div><div>★</div></div> <div><div>★</div><div>★</div><div>★</div></div> <div><div>★</div><div>★</div><div>★</div></div> <div><div>★</div><div>★</div><div>★</div></div> <div><div>★</div><div>★</div><div>★</div></div> <div><div>★</div><div>★</div><div>★</div></div> <div><div>★</div><div>★</div><div>★</div></div> <div><div>★</div><div>★</div><div>★</div></div> <div><div>★</div><div>★</div><div>★</div></div> <div><div>★</div><div>★</div><div>★</div></div> <div><div>★</div><div>★</div><div>★</div></div> <div><div>★</div><div>★</div><div>★</div></div> <div><div>★</div><div>★</div><div>★</div></div> <div><div>★</div><div>★</div><div>★</div></div> <div><div>★</div><div>★</div><div>★</div></div> <div><div>★</div><div>★</div><div>★</div></div> <div><div>★</div><div>★</div><div>★</div></div> <div><div>★</div><div>★</div><div>★</div></div> <div><div>★</div><div>★</div><div>★</div></div> <div><div>★</div><div>★</div><div>★</div></div> <div><div>★</div><div>★</div><div>★</div></div> <div><div>★</div><div>★</div><div>★</div></div> <div><div>★</div><div>★</div><div>★</div></div> <div><div>★</div><div>★</div><div>★</div></div> <div><div>★</div><div>★</div><div>★</div></div> <div><div>★</div><div>★</div><div>★</div></div> <div><div>★</div><div>★</div><div>★</div></div> <div><div>★</div><div>★</div><div>★</div></div> <div><div>★</div><div>★</div><div>★</div></div> <div><div>★</div><div>★</div><div>★</div></div> <div><div>★</div><div>★</div><div>★</div></div> <div><div>★</div><div>★</div><div>★</div></div> <div><div>★</div><div>★</div><div>★</div></div> <div><div>★</div><div>★</div><div>★</div></div> <div><div>★</div><div>★</div><div>★</div></div> <div><div>★</div><div>★</div><div>★</div></div> <div><div>★</div><div>★</div><div>★</div></div> <div><div>★</div><div>★</div><div>★</div></div> <div><div>★</div><div>★</div><div>★</div></div> <div><div>★</div><div>★</div><div>★</div></div> <div><div>★</div><div>★</div><div>★</div></div> <div><div>★</div><div>★</div><div>★</div></div> <div><div>★</div><div>★</div><div>★</div></div> <div><div>★</div><div>★</div><div>★</div></div> <div><div>★</div><div>★</div><div>★</div></div> <div><div>★</div><div>★</div><div>★</div></div> <div><div>★</div><div>★</div><div>★</div></div> <div><div>★</div><div>★</div><div>★</div></div> <div><div>★</div><div>★</div><div>★</div></div> <div><div>★</div><div>★</div><div>★</div></div> <div><div>★</div><div>★</div><div>★</div></div> <div><div>★</div><div>★</div><div>★</div></div> <div><div>★</div><div>★</div><div>★</div></div> <div><div>★</div><div>★</div><div>★</div></div> <div><div>★</div><div>★</div><div>★</div></div> <div><div>★</div><div>★</div><div>★</div></div> <div><div>★</div><div>★</div><div>★</div></div> <div><div>★</div><div>★</div><div>★</div></div> <div><div>★</div><div>★</div><div>★</div></div> <div><div>★</div><div>★</div><div>★</div></div> <div><div>★</div><div>★</div><div>★</div></div> <div><div>★</div><div>★</div><div>★</div></div> <div><div>★</div><div>★</div><div>★</div></div> <div><div>★</div><div>★</div><div>★</div></div> <div><div>★</div><div>★</div><div>★</div></div> <div><div>★</div><div>★</div><div>★</div></div> <div><div>★</div><div>★</div><div>★</div></div> <div><div>★</div><div>★</div><div>★</div></div> <div><div>★</div><div>★</div><div>★</div></div> <div><div>★</div><div>★</div><div>★</div></div> <div><div>★</div><div>★</div><div>★</div></div> <div><div>★</div><div>★</div><div>★</div></div> <div><div>★</div><div>★</div><div>★</div></div> <div><div>★</div><div>★</div><div>★</div></div> <div><div>★</div><div>★</div><div>★</div></div> <div><div>★</div><div>★</div><div>★</div></div> <div><div>★</div><div>★</div><div>★</div></div> <div><div>★</div><div>★</div><div>★</div></div> <div><div>★</div><div>★</div><div>★</div></div> <div><div>★</div><div>★</div><div>★</div></div> <div><div>★</div><div>★</div><div>★</div></div> <div><div>★</div><div>★</div><div>★</div></div> <div><div>★</div><div>★</div><div>★</div></div> <div><div>★</div><div>★</div><div>★</div></div> <div><div>★</div><div>★</div><div>★</div></div> <div><div>★</div><div>★</div><div>★</div></div> <div><div>★</div><div>★</div><div>★</div></div> <div><div>★</div><div>★</div><div>★</div></div> <div><div>★</div><div>★</div><div>★</div></div> <div><div>★</div><div>★</div><div>★</div></div> <div><div>★</div><div>★</div><div>★</div></div> <div><div>★</div><div>★</div><div>★</div></div> <div><div>★</div><div>★</div><div>★</div></div> <div><div>★</div><div>★</div><div>★</div></div> <div><div>★</div><div>★</div><div>★</div></div> <div><div>★</div><div>★</div><div>★</div></div> <div><div>★</div><div>★</div><div>★</div></div> <div><div>★</div><div>★</div><div>★</div></div> <div><div>★</div><div>★</div><div>★</div></div> <div><div>★</div><div>★</div><div>★</div></div> <div><div>★</div><div>★</div><div>★</div></div> <div><div>★</div><div>★</div><div>★</div></div> <div><div>★</div><div>★</div><div>★</div></div> <div><div>★</div><div>★</div><div>★</div></div> <div><div>★</div><div>★</div><div>★</div></div> <div><div>★</div><div>★</div><div>★</div></div> <div><div>★</div><div>★</div><div>★</div></div> <div><div>★</div><div>★</div><div>★</div></div> <div><div>★</div><div>★</div><div>★</div></div> <div><div>★</div><div>★</div><div>★</div></div> <div><div>★</div><div>★</div><div>★</div></div> <div><div>★</div><div>★</div><div>★</div></div> <div><div>★</div><div>★</div><div>★</div></div> <div><div>★</div><div>★</div><div>★</div></div> <div><div>★</div><div>★</div><div>★</div></div> <div><div>★</div><div>★</div><div>★</div></div> <div><div>★</div><div>★</div><div>★</div></div> <div><div>★</div><div>★</div><div>★</div></div> <div><div>★</div><div>★</div><div>★</div></div> <div><div>★</div><div>★</div><div>★</div></div> <div><div>★</div><div>★</div><div>★</div></div> <div><div>★</div><div>★</div><div>★</div></div> <div><div>★</div><div>★</div><div>★</div></div> <div><div>★</div><div>★</div><div>★</div></div> <div><div>★</div><div>★</div><div>★</div></div> <div><div>★</div><div>★</div><div>★</div></div> <div><div>★</div><div>★</div><div>★</div></div> <div><div>★</div><div>★</div><div>★</div></div> <div><div>★</div><div>★</div><div>★</div></div> <div><div>★</div><div>★</div><div>★</div></div> <div><div>★</div><div>★</div><div>★</div></div> <div><div>★</div><div>★</div><div>★</div></div> <div><div>★</div><div>★</div><div>★</div></div> <div><div>★</div><div>★</div><div>★</div></div> <div><div>★</div><div>★</div><div>★</div></div> <div><div>★</div><div>★</div><div>★</div></div> <div><div>★</div><div>★</div><div>★</div></div> <div><div>★</div><div>★</div><div>★</div></div> <div><div>★</div><div>★</div><div>★</div></div> <div><div>★</div><div>★</div><div>★</div></div> <div><div>★</div><div>★</div><div>★</div></div> <div><div>★</div><div>★</div><div>★</div></div> <div><div>★</div><div>★</div><div>★</div></div> <div><div>★</div><div>★&lt;/</div></div>
-----------	-----------------------	--

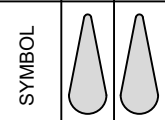




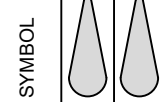
This item has been  
digitally signed and sealed  
by Jon Barber, PE on  
2/24/25  
Printed copies of this  
document are not  
considered signed and  
sealed and the signature  
must be verified on any  
electronic copies.



DESIGNER: TEP  
DRAWN BY: TEP  
REVIEWED BY: JB



ISSUE DATE: 02/24/2025 100% PLANS  
COMP. FILE NO.: 21-5436  
STATE PROJECT NO.: 61307C-N3803



REVISION  
DATE

CAMP HELEN STATE PARK




PLUMBING NEW WORK PLAN

PARK IMPROVEMENT

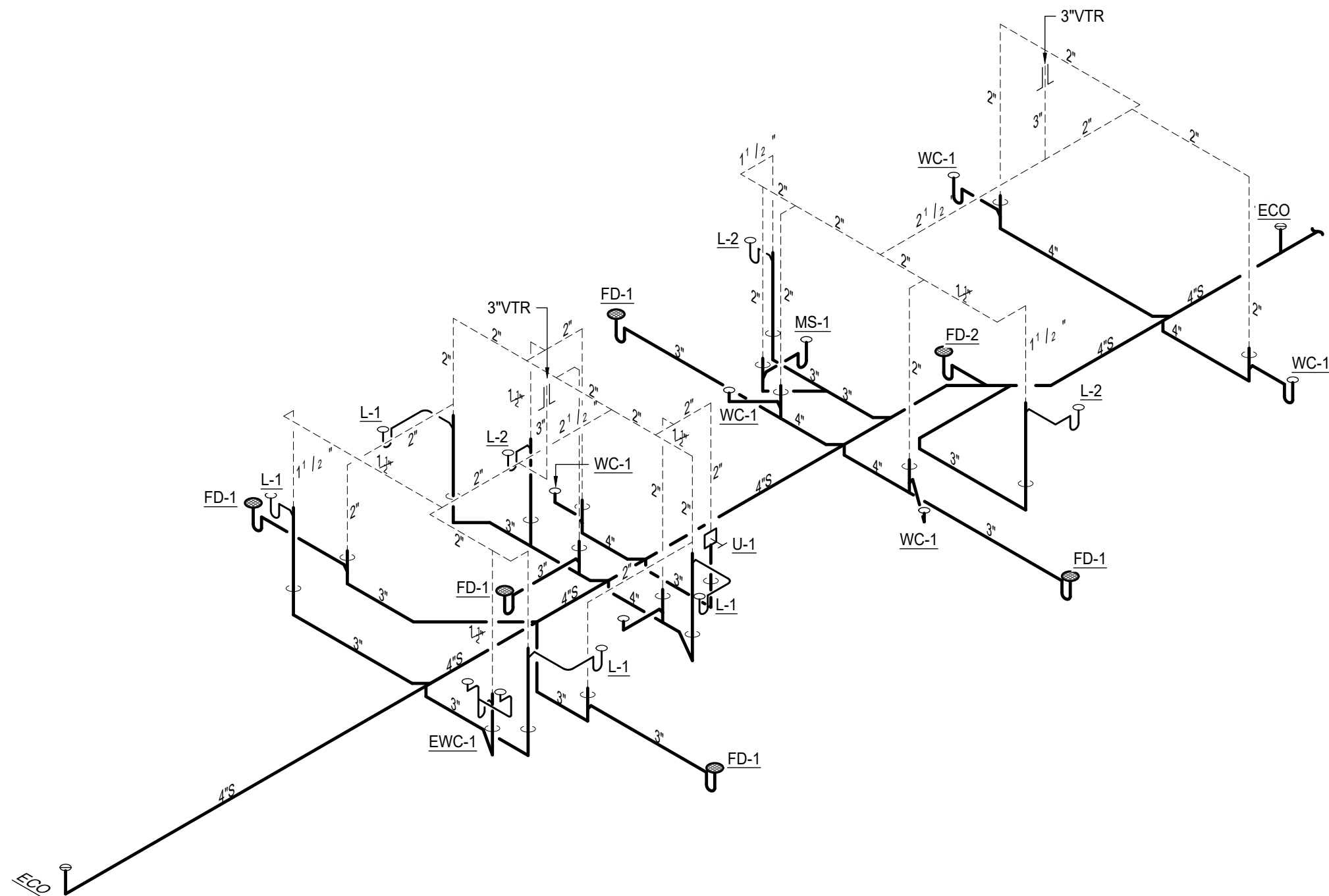
SHEET NO.

P200

Department of Environmental Protection  
Division of Recreation and Parks  
Bureau of Design and Construction  
3800 Commonwealth Blvd., Tallahassee, FL 32399 (850) 245-2300

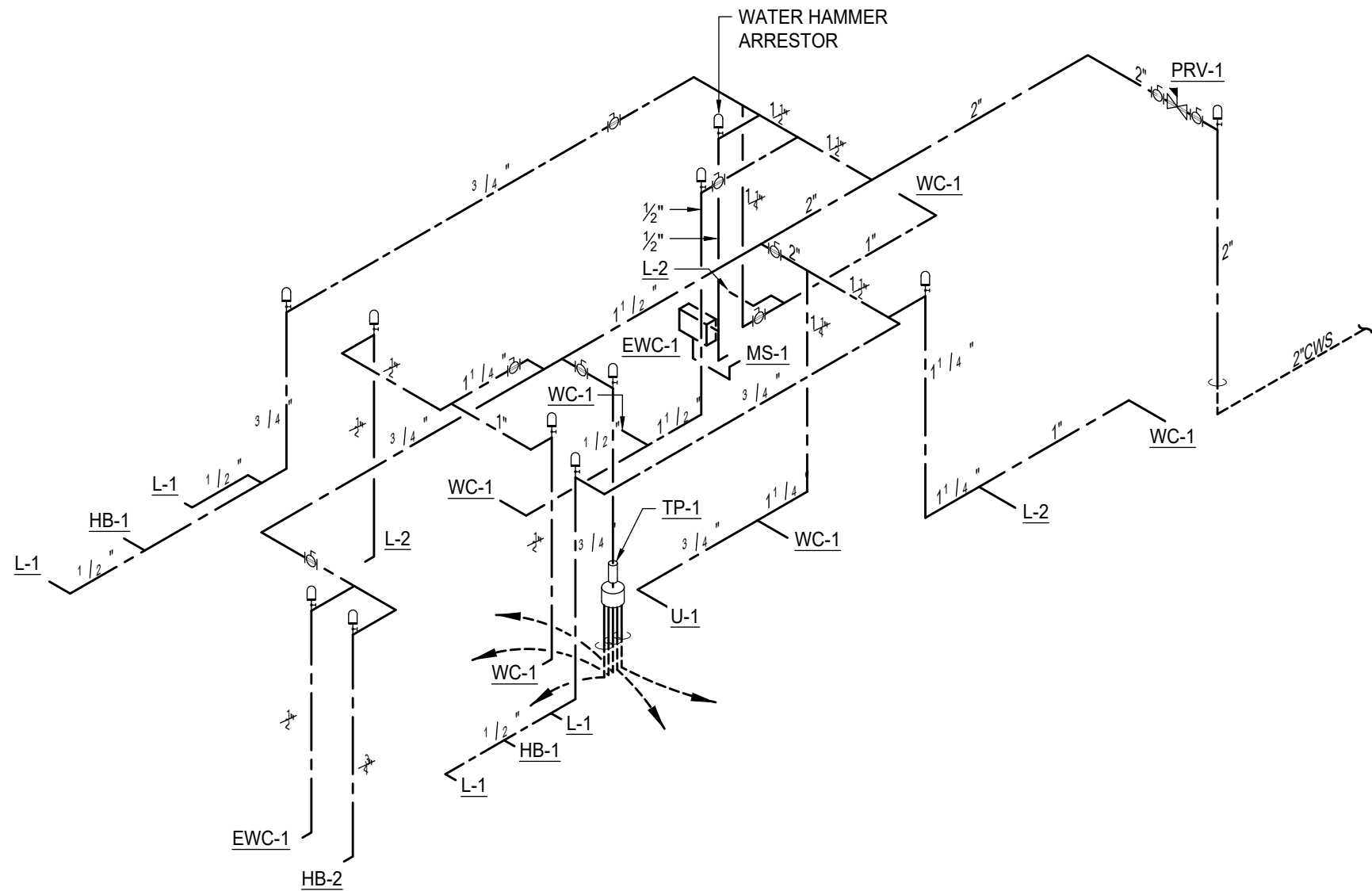
SHEET NO.	CAMP HELEN STATE PARK	PROFESSIONAL REGISTRATION	DESIGNER: TEP	ISSUE DATE: 02/24/2025	100% PLANS	SYMBOL	REVISION	DATE	DATE
	PLUMBING DETAILS		DRAWN BY: TEP	COMP. FILE NO: 21-5436					
PROJECT TITLE	PARK IMPROVEMENT		REVIEWED BY: JB	STATE PROJECT NO.: 61307C - N3803					
			<div>Consultant: <b>MCGINNIS + FLEMING ENGINEERING</b> JON BARBER, PE 50477 BOON WALLACE, PE 16602 402.547.1411 JMB@MFCINC.COM WFW@MFCINC.COM MFCINC.COM 800.681.6424</div> <div>Department of Environmental Protection Division of Recreation and Parks Bureau of Design and Construction 3800 Commonwealth Blvd., Tallahassee, FL 32399 (850) 245-2300</div>						
P300									





1 PLUMBING RISER - SANITARY

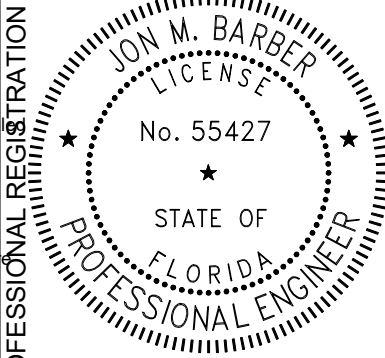
NTS



2 PLUMBING RISER - DOMESTIC WATER

NTS

This item has been  
digitally signed and sealed  
by Jon Barber, PE on  
2/24/25  
Printed copies of this  
document are not  
considered signed and  
sealed and the signature  
must be verified on any  
electronic copies.



CAMP HELEN STATE PARK

PLUMBING RISERS

PARK IMPROVEMENT

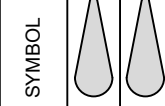
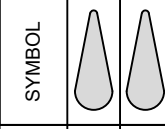
SHEET NO.

P400

DESIGNER: TEP  
DRAWN BY: TEP  
REVIEWED BY: JB



ISSUE DATE: 02/24/2025 100% PLANS  
COMP. FILE No.: 21-5436  
STATE PROJECT No.: 61307C-N3803



REVISION  
DATE  
SYMBOL  
DATE  
SYMBOL

Department of Environmental Protection  
Division of Recreation and Parks  
Bureau of Design and Construction  
3800 Commonwealth Blvd., Tallahassee, FL 32399 (850) 245-2300