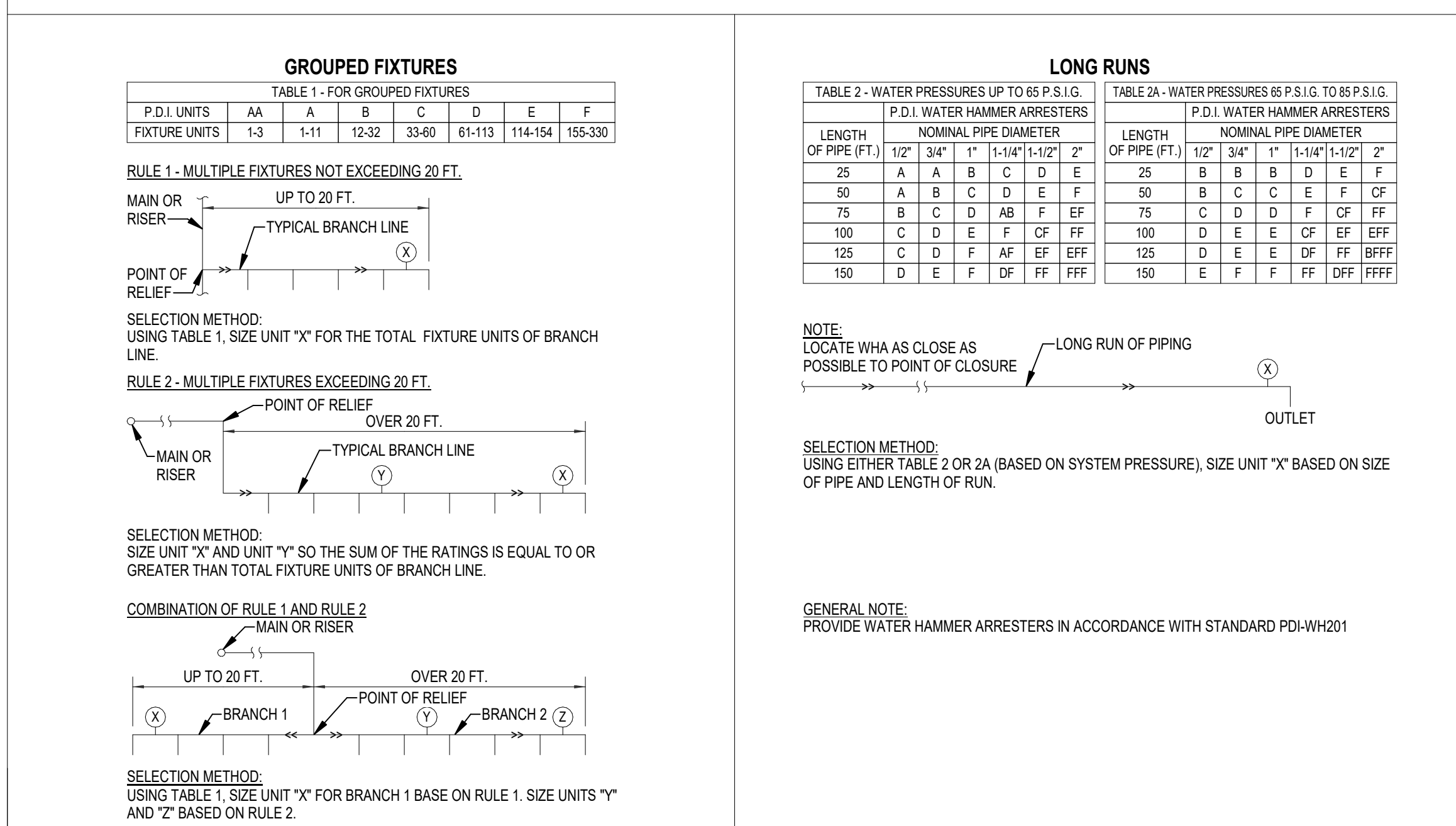


FIRESTOP SCHEDULE OF THROUGH PENETRATION SYSTEMS. BASIS OF DESIGN: HILTI, INC.								
TYPE OF PENETRANT	F-RATING (IFR)	CONCRETE FLOORS		CONCRETE OR BLOCK WALLS BASIS OF DESIGN UL SYSTEM		GYPSUM WALLS		HILTI PRODUCTS
CIRCULAR BLANK OPENINGS (9000-9599)	1	F-A-0008, C-AJ-0055, C-AJ-0090		C-AJ-0055, C-AJ-0090		—		CP 680, CP 618, FS-ONE MAX, CFS-BL
	2	F-A-0009, C-AJ-0055, C-AJ-0090		C-AJ-0055, C-AJ-0090		—		
METAL PIPES OR CONDUIT (1000-1999)	1	C-AJ-1228, F-A-1028, F-A-1017		C-AJ-1228, W-L-1067, W-L-1020		W-L-1054, W-L-1058, W-L-1164, W-L-1506		CP 680, FS-ONE MAX, CP 606, CFS-S ILG, CFS-D, MINERAL WOOL
	2	C-AJ-1228, F-A-1028, F-A-1017		C-AJ-1228, W-L-1067, W-L-1020, W-J-1248		W-L-1054, W-L-1058, W-L-1164, W-L-1506		
NON-METALLIC PIPE OR CONDUIT (I.E. PVC, CPVC, ABS, FRP, ENP) (2000-2999)	1	F-A-2053, F-A-2025, C-AJ-2109, C-AJ-2098, C-AJ-2271, C-AJ-2167, C-BJ-2021, C-AJ-2342		C-AJ-2109, C-AJ-2098, C-AJ-2167, C-AJ-2371, C-AJ-2342		W-L-2078, W-L-2075, W-L-2128		CP 680, CP 643N, MINERAL WOOL, CP 644, FS-ONE MAX, CFS-S ILG, CFS-S ILG, CP 646
	2	F-A-2053, F-A-2025, C-AJ-2109, C-AJ-2098, C-AJ-2271, C-AJ-2167, C-BJ-2021, C-AJ-2371, C-AJ-2342		C-AJ-2109, C-AJ-2098, C-AJ-2167, C-AJ-2371, C-AJ-2342		W-L-2078, W-L-2075, W-L-2128		
INSULATED PIPES (5000-5999)	1	F-A-5015, F-A-5017, C-AJ-5048, C-AJ-5091, C-AJ-5090, C-AJ-5090		C-AJ-5090, C-AJ-5091, C-AJ-5061, W-J-5042		W-L-5028, W-L-5029, W-L-5047		CP 680, FS-ONE MAX MINERAL WOOL
		F-A-5015, F-A-5017, C-AJ-5090, C-AJ-5091, C-AJ-5090		C-AJ-5090, C-AJ-5091, C-AJ-5061, W-J-5042		W-L-5028, W-L-5029, W-L-5047		
	1	C-AJ-8099, C-AJ-8056, C-AJ-8143		C-AJ-8099, C-AJ-8056, W-J-8007, C-AJ-8143		W-L-1095, W-L-8013		
MIXED PENETRANTS (8000-8999)	2	C-AJ-8099, C-AJ-8056, C-AJ-8143, C-AJ-8252		C-AJ-8099, C-AJ-8056, W-J-8007, C-AJ-8143, C-AJ-8252		W-L-1095, W-L-8013		FS-ONE MAX, CFS-BL, CP 620, CP 618

NOTES:

1. JOBSITE CONDITIONS OF EACH THROUGH-PENETRATION FIRESTOP SYSTEM MUST MEET ALL DETAILS OF THE UL-CLASSIFIED SYSTEM SELECTED.
2. IF JOBSITE CONDITIONS DO NOT MATCH ANY UL-CLASSIFIED SYSTEMS IN THE SCHEDULES ABOVE, CONTACT FIRESTOP MANUFACTURER FOR ALTERNATIVE SYSTEMS OR ENGINEER JUDGMENT DRAWINGS.
3. WHERE MORE THAN ONE APPLICABLE UL-CLASSIFIED SYSTEM IS LISTED IN THE SCHEDULES, CHOOSE THE UL SYSTEM WHICH IS MOST ECONOMICAL FOR EACH THROUGH-PENETRATION FIRESTOP SYSTEM.
4. COORDINATE WORK WITH OTHER TRADES TO ENSURE THAT PENETRATION OPENING SIZES ARE APPROPRIATE FOR PENETRANT LOCATIONS, AND VICE-VERSA.
5. ALL THROUGH-PENETRATION FIRESTOPS SHALL BE PROVIDED BY ONE MANUFACTURER. APPROVED MANUFACTURERS: HILTI, RECTORSAL, 3M, ILL.





WATER HAMMER ARRESTERS






PIPING AND FITTINGS

	CAP
	ELBOW TURNED UP
	ELBOW TURNED DOWN
	TEE, OUTLET UP
	TEE, OUTLET DOWN
	SANITARY, SOIL OR WASTE PIPING
	SANITARY VENT PIPING
	COLD WATER SUPPLY PIPING
	HOT WATER SUPPLY PIPING
	HOT WATER RECIRCULATION PIPING
	PRIMARY RAIN LEADER
	SECONDARY RAIN LEADER
	(COOLING COIL)/CONDENSATE DRAIN PIPING
	HOSE BIBB
	WALL HYDRANT
	WATER HAMMER ARRESTER - SEE DETAIL THIS SHEET
	FLOOR DRAIN - SEE DETAIL F.P.P.1
	FLOOR SINK - SEE DETAIL M.P.S.1
	ROOF DRAIN - SEE DETAIL L.P.S.1
	OVERFLOW DRAIN - SEE DETAIL L.P.S.1
	HUB DRAIN - SEE DETAIL G.P.S.1
	WALL CLEAN OUT - SEE DETAIL H.P.S.1
	CLEAN OUT - SEE DETAIL H.P.S.1
	CIRCULATOR PUMP

VALVES

  	BALL VALVE (WITH QUARTER TURN HANDLE)
VALVE ACTUATORS:	
	QUARTER TURN LEVER

MISCELLANEOUS

<input checked="" type="checkbox"/>	HINGED CEILING ACCESS PANEL
MIN. I.E. = 36" B.F.F. 	MINIMUM INVERT ELEVATION BELOW REFERENCE ELEVATION
	POINT OF CONNECTION, PLUMBING TO CIVIL
	2 HOUR FIRE RATED WALL

PLUMBING NOTES

1. INSTALL ALL WORK IN ACCORDANCE WITH THE FLORIDA PLUMBING CODE AND LOCAL PLUMBING CODES WHERE CONFLICTS OCCUR BETWEEN CODES AND BETWEEN THE CONSTRUCTION DOCUMENTS AND CODES.
2. PROVIDE PROTECTIVE COVERINGS TO PROTECT EXISTING WORK AND FINISHES.
3. ALL MISCELLANEOUS EQUIPMENT TO BE FURNISHED UNDER OTHER SECTIONS OF THE SPECIFICATIONS THAT REQUIRE PIPING OR DUCT CONNECTIONS SHALL BE RECEIVED AND SET WITH ROUGH-IN AND FINAL FINISHES MADE UNDER THESE SECTIONS.
4. PRESSURE TEST ALL WATER PIPING SYSTEMS AT 150% OF NORMAL WORKING PRESSURE.
5. ALL COPPER PRESSURE PIPE SHALL BE SOLDERED ENTIRELY WITH LEAD-FREE SOLDER.
6. ALL TYPES OF EQUIPMENT SHALL BE INSTALLED TO PROVIDE CONVENIENT ACCESS FOR MAINTENANCE.
7. ALL FLOOR DRAINS SHALL HAVE MINIMUM 3" DRAIN ENDS, DEEP SEAL TRAPS AND AUTOMATIC TRAP PRIMERS (MANUFACTURER: PRECISION PLUMBING PRODUCTS).
8. ALL SHOWER HAMMER ARRESTERS SHALL BE INSTALLED IN ACCORDANCE WITH PD-W0011.
9. ALL HOSE BIBBS, SINK CLOCKS AND/or FAUCETS WITH GLOBE CONNECTIONS SHALL HAVE A VACUUM BREAKER.
10. ALL LOW VOLTAGE SYSTEMS HAVE SPECIAL PRIORITY FOR SLOPING PIPES. HOWEVER, SLOPE MUST BE STARTED AT HIGHEST POINT POSSIBLE.
11. ALL WATER PIPING SUBJECT TO FREEZING SHALL BE FREEZE PROTECTED. THIS INCLUDES ALL PIPING IN RESTROOMS, OFFICES, EQUIPMENT ROOMS, CHANGES, ATTICS, SOFFITS, CRAWL SPACES, EXTERIOR WALLS, CELINGS, ETC.
12. INSULATE EXTERIOR ABOVE GRADE WATER PIPING WITH CELLULAR GLASS. SEE SPECS.
13. INSULATE FLOOR DRAINS ABOVE EQUIPMENT ROOMS. COORDINATE EXACT LOCATION OF DRAINS WITH EQUIPMENT FURNISHED.
14. ALL PLUMBING VENTS SHALL BE 2" MINIMUM UNLESS NOTED OTHERWISE.
15. ALL PLUMBING PIPES AT ALL TIMES SHALL BE PROTECTED BY THE EQUIPMENT REQUIRING SERVICE TO BE LOCATED ABOVE AN INACCESSIBLE CEILING OR INSIDE A WALL. ACCESS PANEL SHALL BE FIRE RATED IF INSTALLED IN A FIRE RATED CEILING OR WALL.
16. SWITCH ALL ON VOLTAGE WIRING AND CONDUIT NECESSARY FOR CONNECTION PRESSURE SWITCHES. SWITCH CHANGE OVER ALARM, ETC. TO MASTER ALARM STATION AT NURSE STATION.
17. A CLEANOUT SHALL BE PROVIDED AT THE BASE OF EACH WASTE, SLO, STACK OR RAIN LEADER. WHETHER ABOVE OR BELOW GRADE.
18. ANY PIPE THAT PASSES UNDER A FOOTING OR THROUGH A FOUNDATION WALL SHALL BE PROVIDED WITH A RELIEVING ARCH OR PIPE SLEEVE. SLEEVE SHALL BE BUILT INTO THE FOUNDATION WALL. THE SLEEVE SHALL BE 12" MINIMUM SIZE OVER THE PIPE.
19. ALL LOCATIONS OF EXISTING BELOW GRADE OR CONCEALED UTILITIES ARE BASED ON REFERENCE MATERIALS PROVIDED TO THE ENGINEER AND HAVE NOT BEEN VERIFIED. CONTRACTOR SHALL LOCATE CONCEALED UTILITIES BY ELECTRICAL ENGINEERING, GEOTECHNICAL ENGINEERING, AND/OR OTHER MEANS AND ACTUAL FIELD CONDITIONS EXIST AND MAY MATERIALLY AFFECT THE DESIGN INTENT.

APPLICABLE CODES

PERFORM WORK IN ACCORDANCE WITH THE FOLLOWING CODES AND ANY APPLICABLE STATUTES, ORDINANCES, CODES, AND REGULATIONS OF GOVERNMENTAL AUTHORITIES HAVING JURISDICTION.

- | | | |
|----|---|--|
| 1. | ASHRAE | |
| a. | STANDARD 15 | SAFETY STANDARD FOR REFRIGERATION SYSTEMS - 2010 |
| b. | STANDARD 55 | THERMAL ENVIRONMENTAL CONDITIONS FOR HUMAN OCCUPANCY |
| c. | STANDARD 62.1 | VENTILATION STANDARD FOR ACCEPTABLE INDOOR AIR QUALITY - 2016 |
| d. | STANDARD 90.1 | ENERGY STANDARD FOR BUILDINGS EXCEPT LOW RISE RESIDENTIAL BUILDINGS |
| 2. | OCCUPATIONAL SAFETY AND HEALTH REGULATIONS (OSHA). | |
| 3. | NATIONAL FIRE CODES | |
| a. | NFPA 1 | UNIFORM FIRE CODE - 2021 (FLORIDA EDITION) |
| b. | NFPA 13 | STANDARD FOR THE INSTALLATION OF SPRINKLER SYSTEM - 2019 |
| c. | NFPA 25 | STANDARD FOR THE INSPECTION, TESTING AND MAINTENANCE OF WATER-BASED FIRE PROTECTION SYSTEMS - 2020 |
| d. | NFPA 70 | NATIONAL ELECTRICAL CODE - 2020 |
| e. | NFPA 72 | NATIONAL FIRE ALARM AND SIGNALING CODE - 2019 |
| f. | NFPA 90A | STANDARD FOR THE INSTALLATION OF AIR CONDITIONING AND VENTILATION SYSTEMS - 2021 |
| g. | NFPA 90B | STANDARD FOR THE INSTALLATION OF WARM AIR HEATING AND AIR CONDITIONING SYSTEMS - 2021 |
| h. | NFPA 91 | STANDARD FOR THE INSTALLATION OF BLOWER AND EXHAUST SYSTEMS - 2020 |
| i. | NFPA 101 | STATE FIRE CODE - 2021 (FLORIDA EDITION) |
| 4. | FLORIDA BUILDING CODE - 2023 8th EDITION | |
| a. | BUILDING CODE | |
| b. | ENERGY CONSERVATION CODE | |
| c. | MECHANICAL CODE | |
| d. | PLUMBING CODE | |
| e. | FUEL GAS CODE | |
| f. | ACCESSIBILITY CODE | |
| 5. | FLORIDA STATUTES | |
| a. | CHAPTER 471 | ENGINEERING |
| b. | CHAPTER 533.80 | BUILDING CONSTRUCTION STANDARDS, FLORIDA BUILDING CODE - ENFORCEMENT |
| 6. | FLORIDA ADMINISTRATIVE CODE | |
| a. | CHAPTER 6B-1 | FLORIDA BUILDING COMMISSION HANDICAPPED ACCESSIBILITY STANDARDS |
| b. | CHAPTER 61G15-34 | RESPONSIBILITY RULES OF PROFESSIONAL ENGINEERS CONCERNING THE DESIGN OF MECHANICAL SYSTEMS |
| c. | CHAPTER 69A-3 | FIRE PREVENTION - GENERAL PROVISIONS |
| d. | CHAPTER 69A-60 | THE FLORIDA FIRE PREVENTION CODE |

MINIMUM REQUIRED SLOPE

Drainage Type	Size (Inches)	Minimum Slope (Inch/Foot) - Note 1
Sanitary (Note 2)	2-1/2" or less	1/4"
	3" to 6"	1/8"
	8" or larger	1/16"
Storm (Note 3)	12" or less	1/16"
Condensate	4" or less	1/8"

NOTES

1. UNLESS NOTED OTHERWISE ON PLANS.
2. COMBINATION WASTE AND VENT PIPING SHALL BE RUN AT A MAXIMUM SLOPE OF 1/2" PER FOOT.
3. SEE ROOF DRAINAGE SCHEDULE FOR SLOPE AT EACH ROOF DRAIN.

GENERAL NOTES

- DRAWINGS ARE DIAGRAMMATIC, INDICATIVE OF THE JOB TO BE FURNISHED AND INSTALLED UNDER THIS CONTRACT. REFER TO ARCHITECT FOR COMPLETION OF THE JOB AND BEFORE FINAL PAYMENT IS MADE. FIELD VERIFICATION OF DIMENSIONS AND CONDITIONS. IF THE CONTRACTOR IS UNABLE TO INTERPRET THE CONTRACT DOCUMENTS, HE IS RESPONSIBLE TO REQUEST CLARIFICATION IN WRITING TO THE ARCHITECT. IF HE FAILS TO DO SO, HE SHALL BE RESPONSIBLE FOR ANY AND ALL CONSEQUENT DAMAGE, LOSS, AND DEFICIENCIES ASSOCIATED THEREWITH.
- BEFORE SUBMITTING FOR THE WORK, EACH BIDDER WILL BE RESPONSIBLE TO EXAMINE THE PREMISES AND CONDITIONS, AS WELL AS ANY EXISTING UTILITIES, AND DETERMINE THE NECESSITY TO COMPLETE THE WORK UNDER THIS CONTRACT. NO ALLOWANCE WILL SUBSEQUENTLY BE MADE IN THIS CONNECTION ON BEHALF OF THE CONTRACTOR FOR ANY ERROR OR OMISSION ON HIS PART.
- THE CONTRACTOR SHALL MAINTAIN ALL EXISTING UTILITIES, CONNECTIONS, FENCES, SYSTEMS, DEMAND CHARGES AND LICENSE FEES IN CONNECTION WITH HIS WORK.
5. CONSTRUCTION/MANAGER/GENERAL CONTRACTOR SHALL BE RESPONSIBLE FOR COORDINATING WORK TO AVOID CONFLICTS WITH OTHERS.
6. WORK SHALL COMPLY WITH APPLICABLE O.S.H.A. AND E.P.A. REGULATIONS AND GUIDELINES. ERECT AND MAINTAIN REASONABLE PRECAUTIONS FOR SAFETY AND HEALTH INCLUDING POSTING GUARDS, SIGNS AND WARNING LIGHTS. PROVIDE SAFETY PRECAUTIONS AND BARRICADES FOR PEDESTRIANS AT CONSTRUCTION VEHICLE ACCESS AND EGRESS LOCATIONS.
7. THE CONTRACTOR SHALL PROVIDE DEMOLITION, CLEANING AND CONSTRUCTION WORK. SUBMIT A COMPLETELY DETAILED CONSTRUCTION SCHEDULE PRIOR TO PRE-CONSTRUCTION CONFERENCE.
8. THE CONTRACTOR SHALL STRICTLY BE HELD TO THE PROJECT SCHEDULE. HE SHALL PROVIDE SUFFICIENT PERSONNEL AND EQUIPMENT TO COMPLETE THE WORK WITHIN THE SCHEDULED TIME.
9. THE CONTRACTOR SHALL BE RESTRICTED TO AREAS SPECIFIED BY THE OWNER FOR ON-SITE STORAGE OF CONSTRUCTION MATERIALS. THE CONTRACTOR IS RESPONSIBLE FOR THE PROTECTION AND SECURITY OF CONSTRUCTION MATERIALS.
10. THE CONTRACTOR SHALL MAINTAIN A CLEAN WORK ENVIRONMENT AT ALL TIMES AND SHALL CLEAN THE ENTIRETY OF DEBRIS FROM THE PROJECT SITE.
11. THE CONTRACTOR SHALL FURNISH "AS-BUILT" DRAWINGS TO THE ARCHITECT AT COMPLETION OF CONSTRUCTION.
12. THE CONTRACTOR SHALL SUBMIT AN APPROVAL STATEMENT ON DOCUMENTS SUBMITTED AS SHOP DRAWINGS, PRODUCT DATA, SAMPLES AND SIMILAR SUBMITTALS CERTIFIERS THAT THE CONTRACTOR HAS COMPLIED WITH THE CONTRACT DOCUMENT REQUIREMENTS RELATED TO "SHOP DRAWINGS, PRODUCT DATA AND SAMPLES". THE CONTRACTOR SHALL NOT BE RESPONSIBLE FOR THE ACCURACY OF THE INFORMATION PROVIDED IN THE CONTRACT DOCUMENTS BY THE ARCHITECT/ENGINEER'S APPROVAL OF SHOP DRAWINGS, PRODUCT DATA, SAMPLES OR SIMILAR SUBMITTALS UNLESS THE CONTRACTOR HAS SPECIFICALLY INFORMED THE ARCHITECT/ENGINEER IN WRITING OF ANY DISCREPANCIES OR OMISSIONS IN THE CONTRACT DOCUMENTS. THE ARCHITECT/ENGINEER HAS GIVEN WRITTEN APPROVAL TO THE SPECIFIC DEFINITION, THE CONTRACTOR SHALL NOT BE RELIEVED OF RESPONSIBILITY FOR ERRORS OR OMISSIONS IN SHOP DRAWINGS, PRODUCT DATA, SAMPLES OR SIMILAR SUBMITTALS.
13. PRIOR TO INSTALLATION, COORDINATE AND ADJUST THE FINAL LOCATION OF WALL MOUNTED DEVICES AND EQUIPMENT WITH ALL CASEWORK, SHELVING, MARKER BOARDS, BULLETIN BOARDS OR OTHER WALL MOUNTED FIXTURES.
14. SUPPORTS AND HANGERS SHALL PRESENT A NEAT, ORDERLY APPEARANCE.
15. ROOF MOUNTED EQUIPMENT SHALL BE SECURED TO STRUCTURE TO RESIST A 30 MPH WIND LOAD.
16. THE CONTRACTOR SHALL MAINTAIN PROPER CLEARANCE OF ALL STRUCTURAL WALL ASSEMBLIES, BEAM AND FLOOR PENETRATIONS SHALL BE APPROVED BY THE STRUCTURAL ENGINEER. BEAM SLEEVES AND BEAM REINFORCING APPROVED BY STRUCTURAL ENGINEER SHALL BE FURNISHED AND INSTALLED BY THIS CONTRACTOR.
17. CONTRACTOR SHALL FURNISH UL APPROVED DRAWINGS FOR EACH TYPE OF FIRE RATED ASSEMBLY. PENETRATION BY DUCTS, PIPES OR CONDUITS. THESE DRAWINGS SHALL BE DISPLAYED ON THE JOB SITE AT ALL TIMES.
18. CONTRACTOR SHALL GUARANTEE THE WORK AND MATERIALS FOR A PERIOD OF ONE YEAR FROM DATE OF FINAL ACCEPTANCE. THIS GUARANTEE SHALL BE IN ADDITION TO THE WARRANTIES PROVIDED BY MATERIAL MANUFACTURERS.
19. EXITWAYS SHALL BE KEPT CLEAR. IF AN EXIT MUST BE TEMPORARILY BLOCKED, PROVIDE THE REQUIRED BARRICADE AND DIRECTIONAL SIGNS FOR TEMPORARY EXITING AND SAFETY.
20. THE CONTRACTOR SHALL CLEAN UP ALL DEBRIS AND MATERIALS FROM ALL SURFACES WHERE EQUIPMENT, CONDUIT AND/OR PIPING ARE REMOVED.

ABBREVIATIONS

AC	ABOVE CEILING	MSB	MOP SERVICE BASIN
AF	ABOVE FINISHED FLOOR	NA	NOT APPLICABLE
AS	AS HIGH AS POSSIBLE	OD	OVERFLOW DRAIN
CHP	COLD WATER SUPPLY	PRN	PRANTRY
DHW	DOMESTIC HOT WATER	PVENT	PVENT
DN	DOWN	RD	ROOF DRAIN
ELWC	ELECTRIC WATER COOLER	RL	RUN LEADER
FD	FLOOR DRAIN	SK	SNK
HDR	HUB DRAIN	TYP	TYPICAL
HP	HORSEPOWER	V	VALVE
HWS	HOT WATER SUPPLY	VTR	VENT THROUGH ROOF
HW	HOT WATER REGULATION	WC	WATER CLOSET
IE	INLET ELEVATION	WCO	WALL CLEANOUT
MB	MIXED WATER	WH	WALL HYDRANT
LV	INVERT LOCATION	WHM	WATER HAMMER ARRESTER

DRAWING INDEX

P0.1	GENERAL NOTES, LEGENDS & SCHEDULES
P0.2	SCHEDULES
P1.1	FLOOR PLAN - WASTE & VENT
P1.2	FLOOR PLAN - SUPPLY
P1.3	ROOF PLAN
P2.1	ENLARGED PLANS
P3.1	WASTE, VENT & STORM DIAGRAMS
P3.2	SUPPLY RISER DIAGRAM
P5.1	DETAILS



BKJ, Inc., Architecture
1621 Physicians Dr.
Tallahassee, Florida 32308
(P) 850.778.8007 | (F) 850.546.8151
www.bkjarchitecture.com
FL Architecture Corporation AA260023

SEAL:

PROJECT TITLE:

COT E&G USC Warehouse
City of Tallahassee Electric & Gas Utility
2641 Municipal Way Tallahassee FL 32304

PROJECT NO.: 23.154

DESIGNED BY: RDR

DRAWN BY: SPD

CHECKED BY: RDR

THIS DRAWING AND ANY REPRODUCTIONS
ARE THE PROPERTY AND COPYRIGHT
OF BJK, INC. AND MAY NOT BE
REPRODUCED, PUBLISHED, OR USED IN ANY
MANNER WITHOUT WRITTEN
PERMISSION OF THE ARCHITECT

[illegible]

DRAWING PHASE:

100% Construction Documents

DRAWING TITLE :

GENERAL NOTES:
LEGENDS &
SCHEDULES

SHEET NO. :

P0.1

DATE: _____

March 28, 2025



HGE PROJECT No. 24038

THIS DOCUMENT IS THE PROPERTY OF HGEEngineering, INC. IT IS LOANED TO YOU FOR YOUR INFORMATION AND IS NOT TO BE REPRODUCED OR COPIED IN ANY MANNER WITHOUT THE WRITTEN PERMISSION OF HGEEngineering, INC. ANY REUSE OR REPRODUCTION, EXCEPT BY WRITTEN AGREEMENT WITH HGEEngineering, IS PROHIBITED.

Florida Registry #2485
Robert D. Richards, P.E. #90648

PLUMBING FIXTURE ACCESSORY SCHEDULE

ACCESSORY TAG	ACCESSORY DESCRIPTION	MANUFACTURER AND MODEL NUMBER
DR-LV-C	1-1/4" CHROME PLATED BRASS OFFSET DRAIN WITH TAIL PIECE. PROVIDE A PERFORATED FLAT CHROME BRASS STRAINER.	ELKAY: UKAD174 OR APPROVED EQUAL
DR-SK-STD	TYPE 304 STAINLESS STEEL DRAIN, REMOVEABLE CONICAL, STRAINER BASKET, 1-1/2" STAINLESS STEEL OFFSET TAILPIECE.	ELKAY: UK35/LK53/LKAD35 OR APPROVED EQUAL
FCT-LV-0.5-MAN-C	SINGLE CONTROL DECK MOUNTED FAUCET, A.D.A. COMPLIANT, 4" CENTERSET, POLISHED CHROME PLATED BRASS, 0.5 GPM AERATOR SPRAY HEAD, 4" COVER PLATE.	T&S BRASS: B-2711 OR APPROVED EQUAL
FCT-MSB	SERVICE SINK FAUCET, POLISHED CHROME PLATED BRASS, BUILT-IN STOPS, VACUUM BREAKER, LEVER HANDLES, WALL BRACE, 3/4" HOSE OUTLET.	T&S BRASS: B-0665-BSTP OR APPROVED EQUAL
FCT-SK-1.5-GEN-SPRAY	SINGLE LEVER DECK MOUNTED FAUCET, POLISHED CHROME PLATED BRASS, 3" SWING SPOUT, 1.5 GPM AT 80 PSI AERATOR, HOSE AND SPRAY, SOFT-CLOSING VALVE WITH INTEGRAL FLOW CONTROL AND ADJUSTABLE STOP TO RESTRICT EXTREME TEMPERATURES. PROVIDE COVER PLATE.	T&S BRASS: B-2730 OR APPROVED EQUAL
FD-SH	FLOOR DRAIN FOR SHOWER, 2" OUTLET	0
FV-1.6-AUTO-S	EXPOSED AUTOMATIC WATER CLOSET FLUSH VALVE, A.D.A. COMPLIANT, POLISHED CHROME PLATED, 1.6 GPF, BATTERY POWERED, SENSOR OPERATED, 1" SCREWDRIVER ANGLE STOP, VACUUM BREAKER, CAST WALL FLANGE.	AMERICAN STANDARD: 6065.161.002 OR APPROVED EQUAL
HGR-MSB	STAINLESS STEEL HANGER, WITH THREE RUBBER TOOL GRIPS.	FIAT: 889CC OR APPROVED EQUAL
HOSE-MSB	HEAVY DUTY, FLEXIBLE HOSE, 5/8" RUBBER, CLOTH REINFORCED, 3/4" BRASS COUPLING, TYPE 302 STAINLESS STEEL BRACKET WITH RUBBER GRIP.	FIAT: 832AA OR APPROVED EQUAL
RMGD-MSB	ALUMINUM RIM GUARD.	FIAT: 1236BB OR APPROVED EQUAL
SEAT-OPN-FRT	EXTRA HEAVY DUTY, OPEN FRONT, ELONGATED SEAT, WITHOUT COVER, SOLID PLASTIC, SELF-SUSTAINING CHECK TYPE HINGE. HINGES SHALL MATCH SEAT COLOR, STAINLESS STEEL POSTS FITTED WITH STAINLESS STEEL WASHERS AND NUTS.	BEMIS: 1655SSCT OR APPROVED EQUAL
SH-TMV-FCT-HND	SHOWER: SINGLE HANDLE PRESSURE BALANCED THERMOSTATIC MIXING VALVE WITH CERAMIC CARTRIDGE, INTEGRAL VOLUME CONTROL, ADJUSTABLE TEMPERATURE LIMIT STOP, TWO SERVICE STOPS/CHECK STOPS, TWO-WAY BRASS DIVERTER VALVE. SHOWER HEAD WITH INTEGRAL 1.5 GPM @ 80 PSI FLOW CONTROL, ADJUSTABLE PATTERN, ARM AND WALL FLANGE. HAND-HELD SHOWER WITH 60" FLEXIBLE METAL HOSE. 24" MOUNTING SLIDE BAR WALL CONNECTION. ALL EXPOSED METALLIC TRIM IS POLISHED CHROME PLATED NICKEL.	JUST: JBSV-4623 OR APPROVED EQUAL
TMV-LV-90	EXPOSED ROUGH BRONZE, THERMOSTATIC MIXING VALVE, ADJUSTABLE LIMIT STOP, ASSE 1070, LISTED FOR POINT OF USE APPLICATION. SET OUTLET TEMPERATURE TO 90°F.	LAWLER: 570 OR APPROVED EQUAL
TR-LV	CAST BRASS ADJUSTABLE P-TRAP, TUBING OUTLET, 1-1/4" x 1-1/2", CLEANOUT PLUG, POLISHED CHROME PLATED FINISH.	ELKAY: UK500 OR APPROVED EQUAL
TR-SK-STD	CAST BRASS ADJUSTABLE P-TRAP, TUBING OUTLET, 1-1/2" x 1-1/2", CLEANOUT PLUG, POLISHED CHROME PLATED FINISH.	KOHLER: K-9000-CP OR APPROVED EQUAL

PLUMBING FIXTURE SCHEDULE

FIXTURE DESIGNATION	FIXTURE DESCRIPTION	A.D.A. COMPLIANT	MOUNTING METHOD	HEIGHT (A.F.F.)	ROUGH-IN PIPE SIZES				MANUFACTURER AND MODEL NUMBER	ACCESSORIES (SEE SCHEDULE)
					COLD WATER SUPPLY	HOT WATER SUPPLY	FIXTURE TRAP	FIXTURE DRAIN		
WC-1	FLUSH VALVE WATER CLOSET, HIGH EFFICIENCY (1.28 - 1.6 GPF), VITREOUS CHINA, SIPHON JET FLUSHING ACTION, ELONGATED RIM, 1-1/2" TOP SPUD, MIN. 2" BALLPASS TRAPWAY. COLOR: WHITE.	YES	FLOOR	RIM: 16-1/2"	1"	N/A	4"	4"	AMERICAN STANDARD: 3043.001 OR APPROVED EQUAL	SEAT-OPN-FRT FV-1.6-AUTO-B
LV-1	LAVATORY, 20"x16", VITREOUS CHINA, 3 FAUCET HOLES (ONE CENTERED, TWO 4" OFF CENTER), ANTI-SPLASH RIM AND HIGH BACK. COLOR: WHITE.	YES	WALL	RIM: 34"	1/2"	1/2"	1-1/4"	2"	AMERICAN STANDARD: 0355.012 OR APPROVED EQUAL	FCT-LV-0.5-MAN-V DR-LV-C TR-LV TMV-LV-90
SK-3	DOUBLE COMPARTMENT SINK, SELF-RIMMING, 33"x22", 16"x13-1/2"x5" DEEP BOWLS, 18 GAUGE TYPE 302 STAINLESS STEEL, SATIN FINISH. 4 FAUCET HOLES (ONE CENTERED, TWO 4" FROM CENTER, ONE 8" FROM CENTER), SOUND DEADENING COATING ON BOTTOM OF SINK.	YES	COUNTER TOP	SEE ARCH. PLANS	1/2"	1/2"	1-1/2"	2"	ELKAY: L1KAD32250 OR APPROVED EQUAL	FCT-SK-1.5-GEN-SPRAY DR-SK-STD TR-SK-STD
EWV-21	ELECTRIC WATER COOLER WITH BOTTLE FILLING STATION, FILTERED, BARRIER-FREE, TYPE 304 STAINLESS STEEL BASIN, BRUSHED FINISH, VANDAL-RESISTANT BUBBLER, STAINLESS STEEL CABINET AND APRON, LEAD-FREE WATERWAYS, SELF CONTAINED SYSTEM (R-134A REFRIGERANT) DELIVERS MIN. 8 GPH OF 50°F WATER @ 80°F. INLET WATER AND 90°F AMBIENT AIR, 120V/1PH. BOTTLE FILLING STATION: ELECTRONIC SENSOR ACTIVATED WITH AUTOMATIC 20-SECOND SHUT-OFF TIMER AND BOTTLE COUNTER. DELIVERS MIN. 1 GPM FLOW RATE WITH LAMINAR FLOW. ANTI-MICROBIAL PLASTIC COMPONENTS.	YES	WALL SURFACE	SPOUT: 38" / 32"	1/2"	N/A	1-1/4"	2"	ELKAY: LZ2STLGBWSVK OR APPROVED EQUAL	
MSB-2	MOP SERVICE SINK BASIN, 24"L x 24"W x 12"H, WITH 2" WIDE SHOULDERS, 1/4" PITCH TOWARD INSIDE, PRECAST TERRAZZO (MINIMUM 3,000 PSI @ 7 DAYS), SURFACE GROUND AND POLISHED WITH ALL HOLES AND FITS GRINDED AND WITH DESS REMOVED. COLOR: BLACK & WHITE MARBLE CHIPS IN GRAY PORTLAND CEMENT.	NO	FLOOR	--	1/2"	1/2"	3"	3"	FIAT: TSB-200 OR APPROVED EQUAL	FCT-MSB RMSD-MSB HOSE-MSB HGR-MSB
IMS	ICE MAKER HOOK-UP BOX, 20 GAUGE STEEL, WHITE POWDER-COATED, ALL WELDED WATER TIGHT CONSTRUCTION, COLD WATER SUPPLY VALVE WITH 1/2" COPPER SWEAT INLET AND 1/4" COMPRESSION OUTLET AND WATER HAMMER ARRESTER.	N/A	WALL RECESSED	--	1/2"	N/A	N/A	N/A	GLYF GRAY: MB11HAAB OR APPROVED EQUAL	
WH	EXTERIOR WALL HYDRANT, NON-FREEZE, ANTI-SIPHON, AUTOMATIC DRAINING, WITH INTEGRAL BACKFLOW PREVENTER, ALL BRONZE INTERIOR PARTS, 3/4" INLET, 3/4" HOSE THREAD OUTLET, STAINLESS STEEL FACE AND OPERATING KEY.	N/A	WALL RECESSED	--	3/4"	N/A	N/A	N/A	0	
HB	ROUGH CHROME HOSE BIBB WITH VACUUM BREAKER, CROSS HANDLE, 3/4" HOSE THREAD OUTLET, 3/4" FEMALE INLET.	N/A	WALL SURFACE	--	3/4"	N/A	N/A	N/A	0	
SH-7	60"x30" ACRYLIC SHOWER MODULE WITH SUBWAY TILE PATTERN, EQUIPPED WITH GRAB BAR ON BACK WALL, GRAB BAR ON SIDE WALL, MOUNTED WITH STAINLESS STEEL BOLTS, 18 GAUGE WHITE CURTAIN ROD, INTEGRAL FRONT TRENCH DRAIN, FACTORY INSTALLED BASE AND 3/4" THRESHOLD, PROVIDE TYPE 304 STAINLESS STEEL 2" DRAIN.	YES	WALL	VALVE: 38" TO 48" (OPTIONAL)	1/2"	1/2"	2"	2"	COMFORT DESIGNS: XST6232TR OR APPROVED EQUAL	SH-TM/FCT-HND FD-SH

NOTES

- 1 SUPPLY STOPS: CHROME-PLATED-BRASS, ONE-QUARTER TURN, BALL-TYPE OR COMPRESSION VALVE WITH INLET MATCHING SUPPLY PIPING.
- 2 FLEXIBLE CONNECTIONS: ASME A112.18.6 BRAIDED- OR CORRUGATED-STAINLESS STEEL, FLEXIBLE HOSE RISER.
- 3 SUPPORT CARRIERS: ASME A112.6.1M TYPE 1 (URINALS) OR TYPE 2 (CONCEALED ARM FOR LAVATORIES) WITH RECTANGULAR STEEL UPRIGHTS, COUPLING, SEAL, AND MOUNTING HARDWARE.
- 4 A.D.A. LAVATORIES & SINKS: PROTECT DRAIN AND SUPPLY LINES WITH "TRAP WRAP" OR APPROVED EQUAL.
- 5 EXTRA MAINTENANCE MATERIALS: FURNISH TWO (2) FLUSHOMETER-VALVE REPAIR KITS FOR EACH TYPE OF FLUSHOMETER VALVE INSTALLED.

THERMOSTATIC MIXING VALVES

DESIGNATION			TMV-1
	APPLICATION		MED / LOW
	SET-POINT	"F	110
	MINIMUM FLOW	GPM	0.5
	MAXIMUM FLOW	GPM	3.5
	PRESSURE DROP @ MAX FLOW	PSI	5
	RECIRCULATED SYSTEM		YES
	ASSE COMPLIANCE		1017
MANUFACTURER			LAWLER
MODEL NUMBER			61-15
DETAIL REFERENCE			APS.1
NOTES:			
1	PROVIDE ROUGH BRASS FINISH		

CIRCULATOR PUMPS

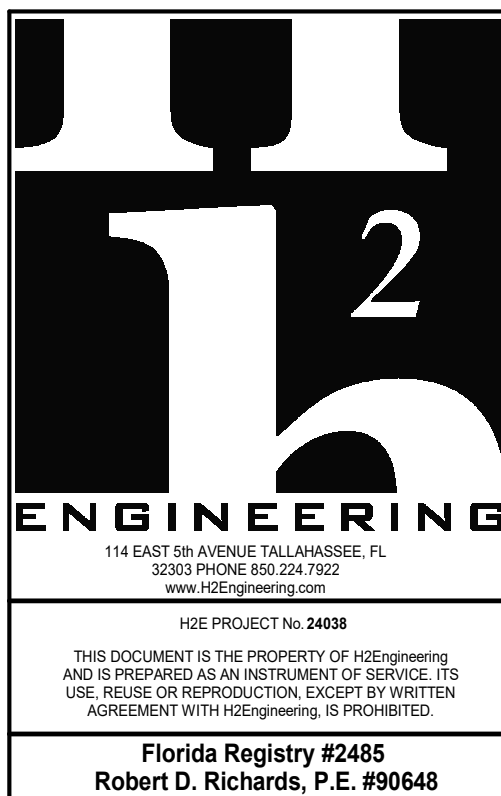
DESIGNATION		CP-1
	SERVICE	DHW
	CAPACITY	GPM 4
	TOTAL DYNAMIC HEAD	FT. 27
	SHUT-OFF HEAD	FT. 35
	PUMP SEAL	MECHANICAL
	MOTOR SPEED	RPM 3,250
	MOTOR HORSEPOWER	HP 1/8
	MOTOR WINDING	FULL
	ELECTRICAL CHARACTERISTICS	V / PH 120 / 1
	NOTES	1
MANUFACTURER		TACO
MODEL NUMBER		009-SF5
DETAIL REFERENCE		APS.1
NOTES: 1 PROVIDE TACO 00 TIMER/AQUASTAT WITH 7 DAY DIGITAL PROGRAMMABLE TIMER. SET TIMER FOR ALLOWABLE OPERATION DURING OCCUPIED HOURS AND AQUASTAT TO CYCLE PUMP. 2 PLUMBING CONTRACTOR TO COORDINATE INSTALLATION OF TIMER AND AQUASTAT WITH ELECTRICAL CONTRACTOR AND INSTALL PER MANUFACTURER INSTRUCTIONS.		

ELECTRIC STORAGE WATER HEATERS

DESIGNATION			EW-1
	STORAGE	GAL	40
	HEATING ELEMENT INPUT (EACH)	KW	4.5
	NUMBER OF ELEMENTS	#	2
	SIMULTANEOUS OPERATION OF ELEMENTS		YES
	TOTAL HEATING INPUT	KW	9.0
	ENTERING WATER TEMPERATURE	°F	60
	LEAVING WATER TEMPERATURE	°F	140
	TEMPERATURE RISE	°F	80
	RECOVERY RATE	GPH	46
	ELECTRICAL CHARACTERISTICS	V / PH	208 / 1
MANUFACTURER			A.O. SMITH
MODEL NUMBER			DEX-40
DETAIL REFERENCE			APS. 1
NOTES:			
1	PROVIDE LOW WATER CUT-OFF.		

FIXTURE UNIT CALCULATIONS

FIXTURE TYPE		QUANTITY	WASTE		SUPPLY					
					COLD		HOT		TOTAL	
			UNIT	TOTAL	UNIT	TOTAL	UNIT	TOTAL	UNIT	TOTAL
	DRINKING FOUNTAIN	1	0.5	0.5	0.25	0.25			0.25	0.25
	LAVATORY (HOT WATER)	3	1	3	1.5	4.5	1.5	4.5	2	6
	SINK	1	2	2	2	2	2	2	3	3
	MOP SERVICE BASIN	1	2	2	2.25	2.25	2.25	2.25	3	3
	WATER CLOSET (FLUSH VALVE)	3	6	18	10	30			10	30
	SHOWER (PER HEAD)	1	2	2	3	3	3	3	4	4
	HOSE BIBB / WALL HYDRANT	7			4	28			4	28
	FLOOR DRAIN	4	2	8						
	REFRIGERATOR / ICE MAKER	2			1	2			1	2
	FLOOR SINK	1	2	2						
TOTAL FIXTURE UNITS				37.5		72		11.75		76.25
DOMESTIC WATER DEMAND (GPM)						58.6		6.8		60.0



SEAL:

PROJECT TITLE:

COT E&G USC Warehouse
City of Tallahassee Electric & Gas Utility
2641 Municipal Way Tallahassee FL 32304

PROJECT NO.: 23.154

DESIGNED BY: RDF

DRAWN BY: SPD

THIS DRAWING AND ANY REPRODUCTIONS
ARE THE PROPERTY AND COPYRIGHT
OF BKJ, INC. AND MAY NOT BE
REPRODUCED, PUBLISHED, OR USED IN ANY
MANNER WITHOUT WRITTEN
PERMISSION OF THE ARCHITECT

REVISIONS:

DRAWING PHASE:

100% Construction Documents

DRAWING TITLE :

SCHEDULES

SHEET NO. :

P0.2

DATE:

March 28, 2025

PROJECT TITLE:

COT E&G USC Warehouse
City of Tallahassee Electric & Gas Utility
2641 Municipal Way Tallahassee FL 32304

SIGNED BY: RDR

AWN BY: SPD

HECKED BY: RDR

DRAWING AND ANY REPRODUCTIONS
THE PROPERTY AND COPYRIGHT
OF BKJ, INC. AND MAY NOT BE
DUCE, PUBLISHED, OR USED IN ANY
MANNER WITHOUT WRITTEN
PERMISSION OF THE ARCHITECT

LOWING PHASE:

100% Construction Documents

AWING TITLE :

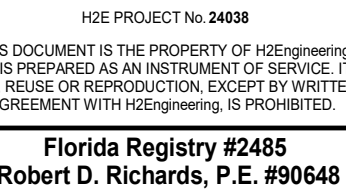
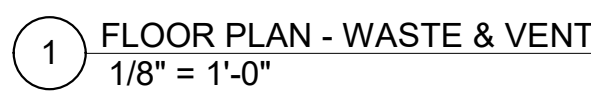
FLOOR PLAN -
ASTE & VENT

SET NO.:

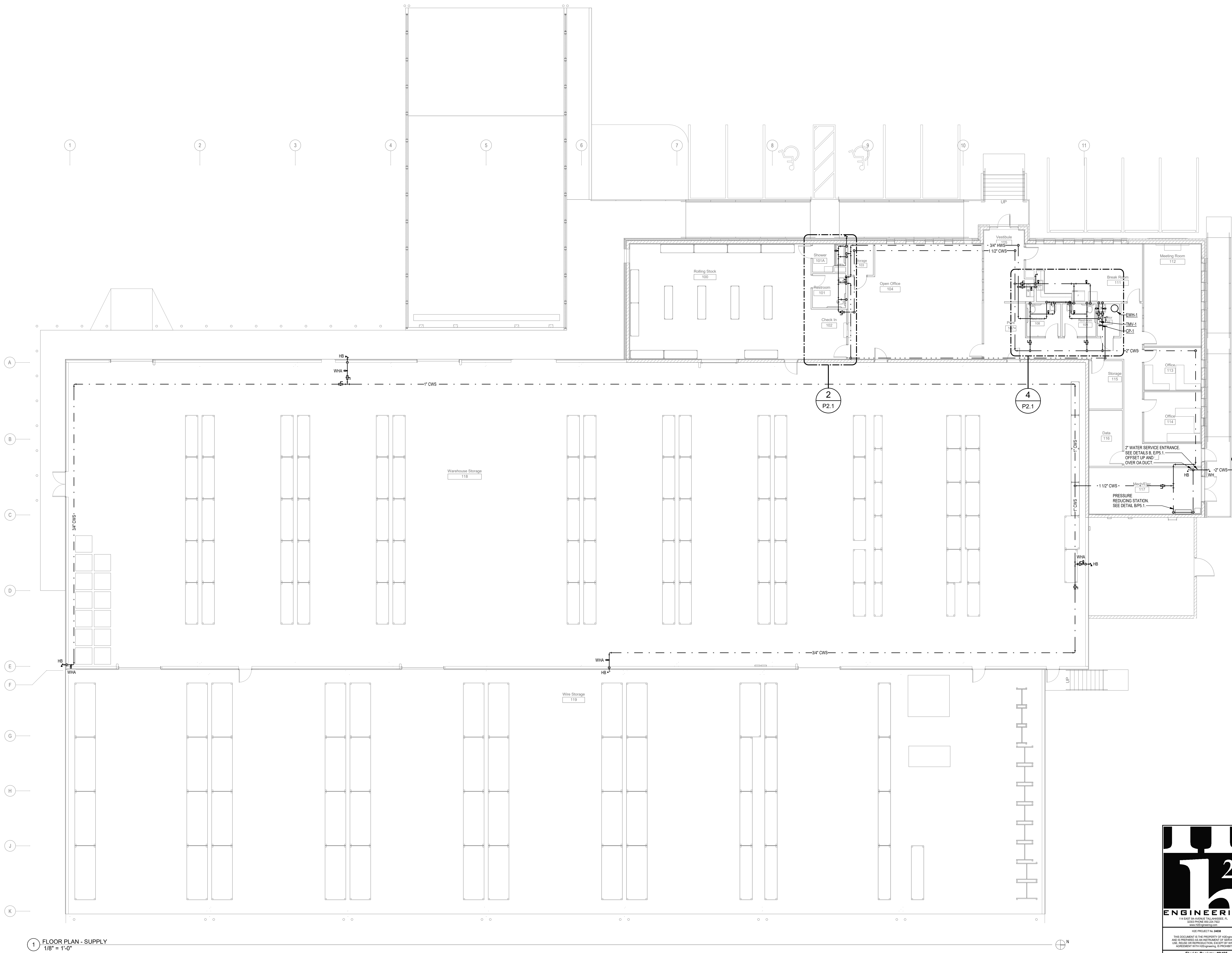
1.1

E:

March 28, 2025



3/28/2025 10:56:01 AM



1 FLOOR PLAN - SUPPLY
1/8" = 1'-0"



BKJ, Inc., Architecture
1621 Physicians Dr.
Tallahassee, Florida 32304
(P) 850.778.8007 | (F) 850.546.6150
www.bkjarchitecture.com
FL Architecture Corporation A4300002280

SEAL:

PROJECT TITLE:

COT E&G USC Warehouse
City of Tallahassee Electric & Gas Utility
2641 Municipal Way Tallahassee FL 32304

PROJECT NO.: 23.154

DESIGNED BY: **RDR**

DRAWN BY: **SPD**

CHECKED BY: **RDR**

THIS DRAWING AND ANY REPRODUCTIONS
ARE THE PROPERTY AND COPYRIGHT
OF BKJ, INC. AND MAY NOT BE
REPRODUCED, PUBLISHED, OR USED IN ANY
MANNER WITHOUT WRITTEN
PERMISSION OF THE ARCHITECT

REVISIONS:

DRAWING PHASE:

100% Construction
Documents

DRAWING TITLE:

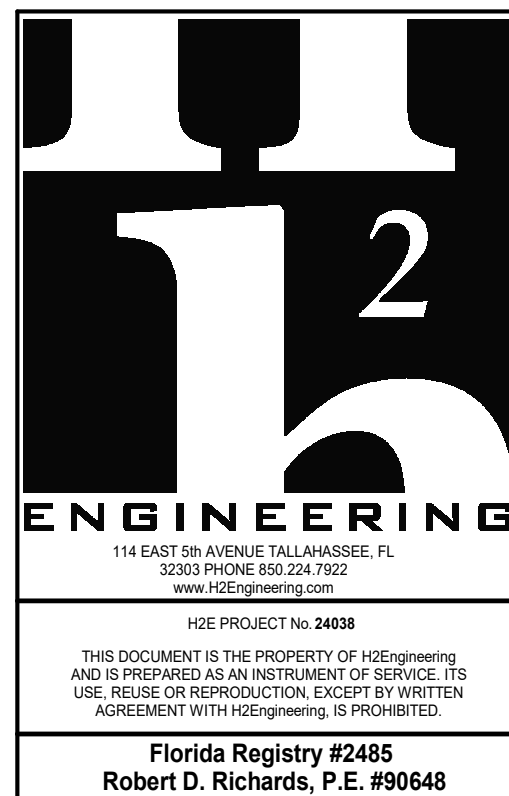
FLOOR PLAN -
SUPPLY

SHEET NO.:

P1.2

DATE:

March 28, 2025



114 EAST 5th AVENUE TALLAHASSEE, FL
32303 PHONE 850.204.7007
www.h2eengineering.com
THIS DOCUMENT IS THE PROPERTY OF H2E Engineering
AND IS PREPARED AS AN INSTRUMENT OF SERVICE. ITS
USE, REUSE OR REPRODUCTION, EXCEPT BY WRITTEN
AGREEMENT WITH H2E Engineering, IS PROHIBITED.
Florida Registry #2468
Robert D. Richards, P.E. #90648

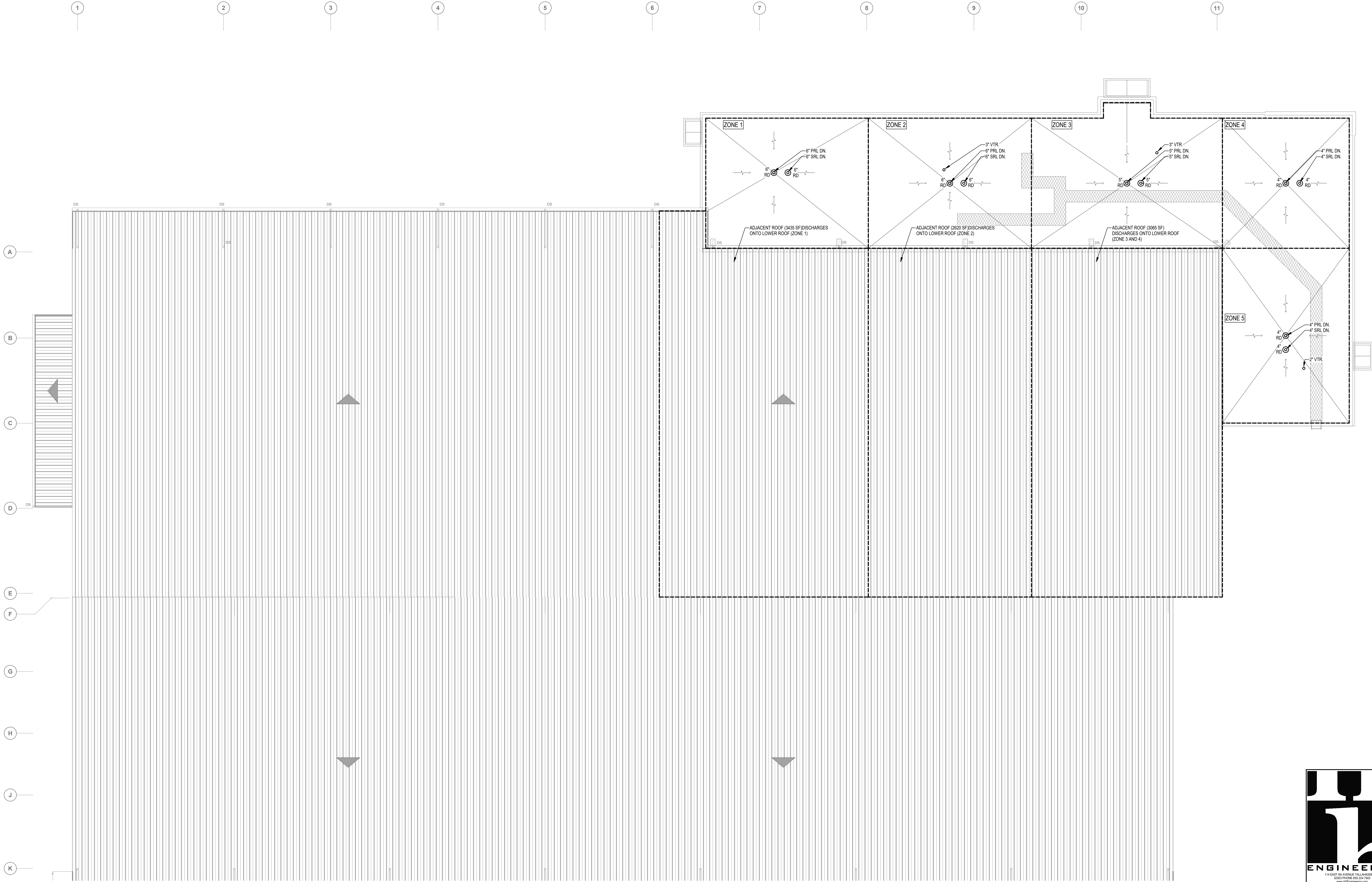
3/28/2025 10:56:02 AM

1 ROOF PLAN
1/8" = 1'-0"

ROOF DRAINAGE SCHEDULE

ZONE NO.	COMBINED FLOW FROM ZONE(S)	HORIZONTAL AREA (SF)	VERTICAL WALL AREA (SF)	TOTAL ROOF AREA (SF)	DRAIN CAPACITY (GPM)	PRIMARY DRAIN			SECONDARY DRAIN		
						VERTICAL DRAIN (INCH)	HORIZONTAL DRAIN (INCH)	SLOPE (INCH / FT)	VERTICAL DRAIN (INCH)	HORIZONTAL DRAIN (INCH)	SLOPE (INCH / FT)
1*		4,410	385	4,803	215	5	6	1/8	5	6	1/8
2*		3,600	339	3,770	176	4	6	1/8	4	6	1/8
3*		2,713	436	2,931	137	4	5	1/8	4	5	1/8
4*		2,293	128	2,357	110	4	4	1/8	4	4	1/8
5		1,030	586	1,323	61	3	4	1/8	3	4	1/8

NOTES:
1 RAIN FALL RATE = 4.5 INCH / HR
2 TOTAL ROOF AREA INCLUDES HORIZONTAL AREA AND 50% OF VERTICAL WALL AREA.
3 ZONES MARKED WITH ASTERISK (*) HAVE COMBINED FLOWS FROM HIGH ROOF.



PROJECT TITLE:

COT E&G USC Warehouse
City of Tallahassee Electric & Gas Utility
2641 Municipal Way Tallahassee FL 32304

PROJECT NO.: 23.154

DESIGNED BY: RDR

DRAWN BY: SPD

CHECKED BY: RDR

THIS DRAWING AND ANY REPRODUCTIONS ARE THE PROPERTY AND COPYRIGHT OF BKJ, INC. AND MAY NOT BE REPRODUCED, PUBLISHED, OR USED IN ANY MANNER WITHOUT WRITTEN PERMISSION OF THE ARCHITECT

REVISIONS:

DRAWING PHASE:

100% Construction Documents

DRAWING TITLE:

ROOF PLAN

SHEET NO.:

P1.3

DATE:

March 28, 2025

ENGINEERING

114 EAST 5th AVENUE TALLAHASSEE, FL 32303 PHONE 904.24.7307 WWW.100ENGINEERING.COM

100 PROJECT NO. 24088

THIS DOCUMENT IS THE PROPERTY OF 100ENGINEERING AND IS PREPARED AS AN INSTRUMENT OF SERVICE. ITS USE, REUSE OR REPRODUCTION, EXCEPT BY WRITTEN AGREEMENT WITH 100ENGINEERING, IS PROHIBITED.

Florida Registry #2468

Robert D. Richards, P.E. #90648

SEAL:

PROJECT TITLE:

COT E&G USC Warehouse
City of Tallahassee Electric & Gas Utility
2641 Municipal Way Tallahassee FL 32304

PROJECT NO.: 23.154

DESIGNED BY: **RDR**

DRAWN BY: **SPD**

CHECKED BY: **RDR**

THIS DRAWING AND ANY REPRODUCTIONS
ARE THE PROPERTY AND COPYRIGHT
OF BKJ, INC. AND MAY NOT BE
REPRODUCED, PUBLISHED, OR USED IN ANY
MANNER WITHOUT WRITTEN
PERMISSION OF THE ARCHITECT

REVISIONS:

DRAWING PHASE:

100% Construction
Documents

DRAWING TITLE:

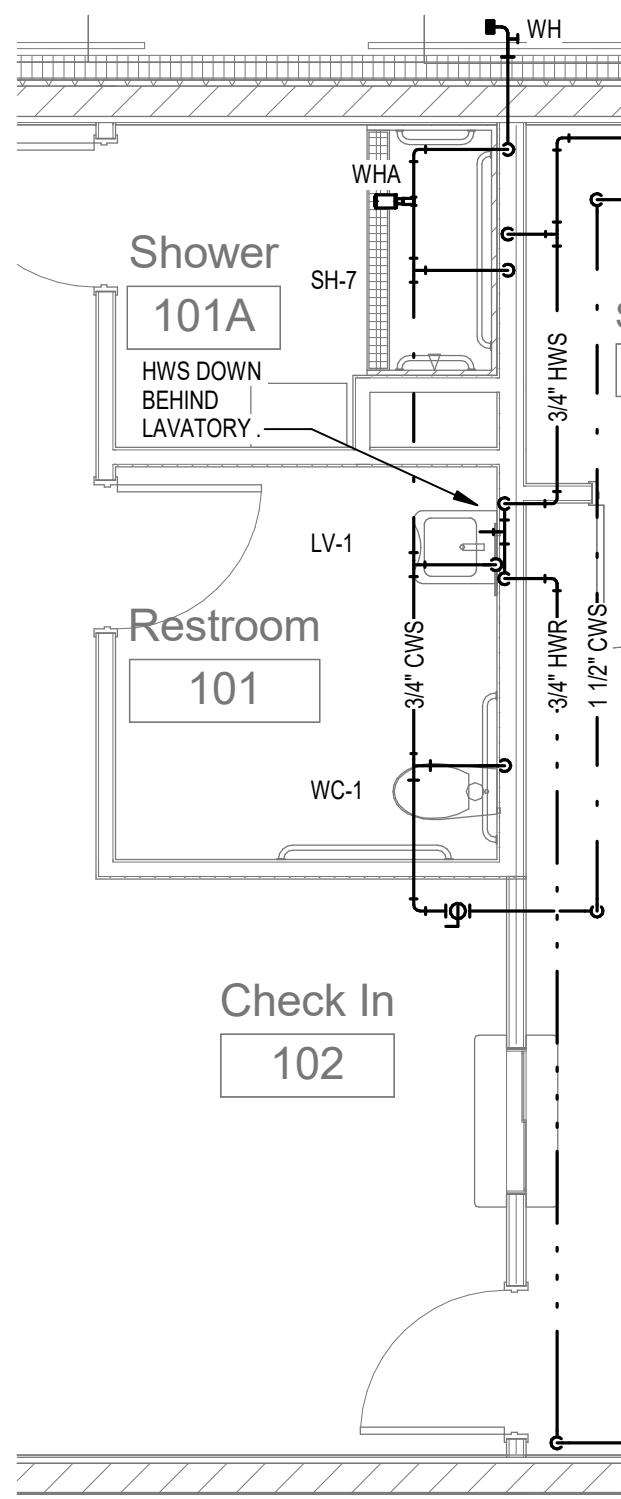
ENLARGED PLANS

SHEET NO.:

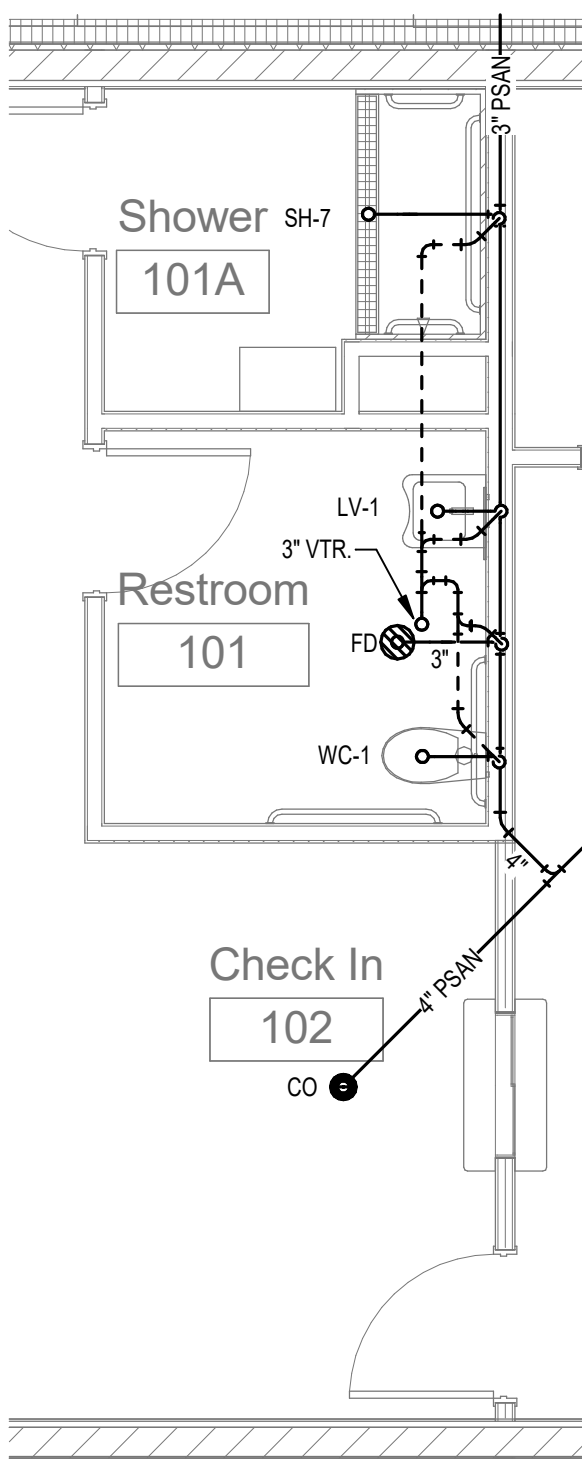
P2.1

DATE:

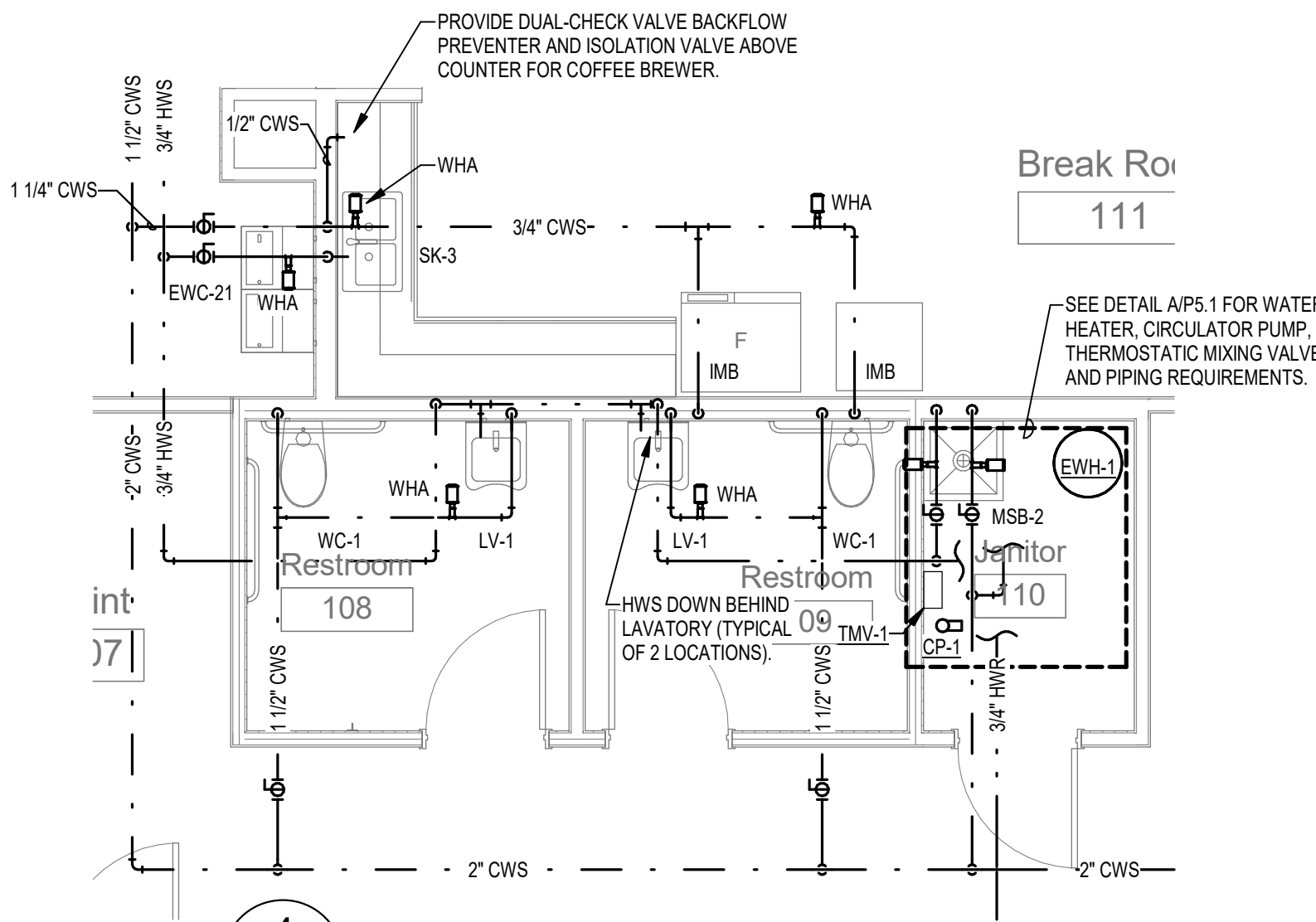
March 28, 2025



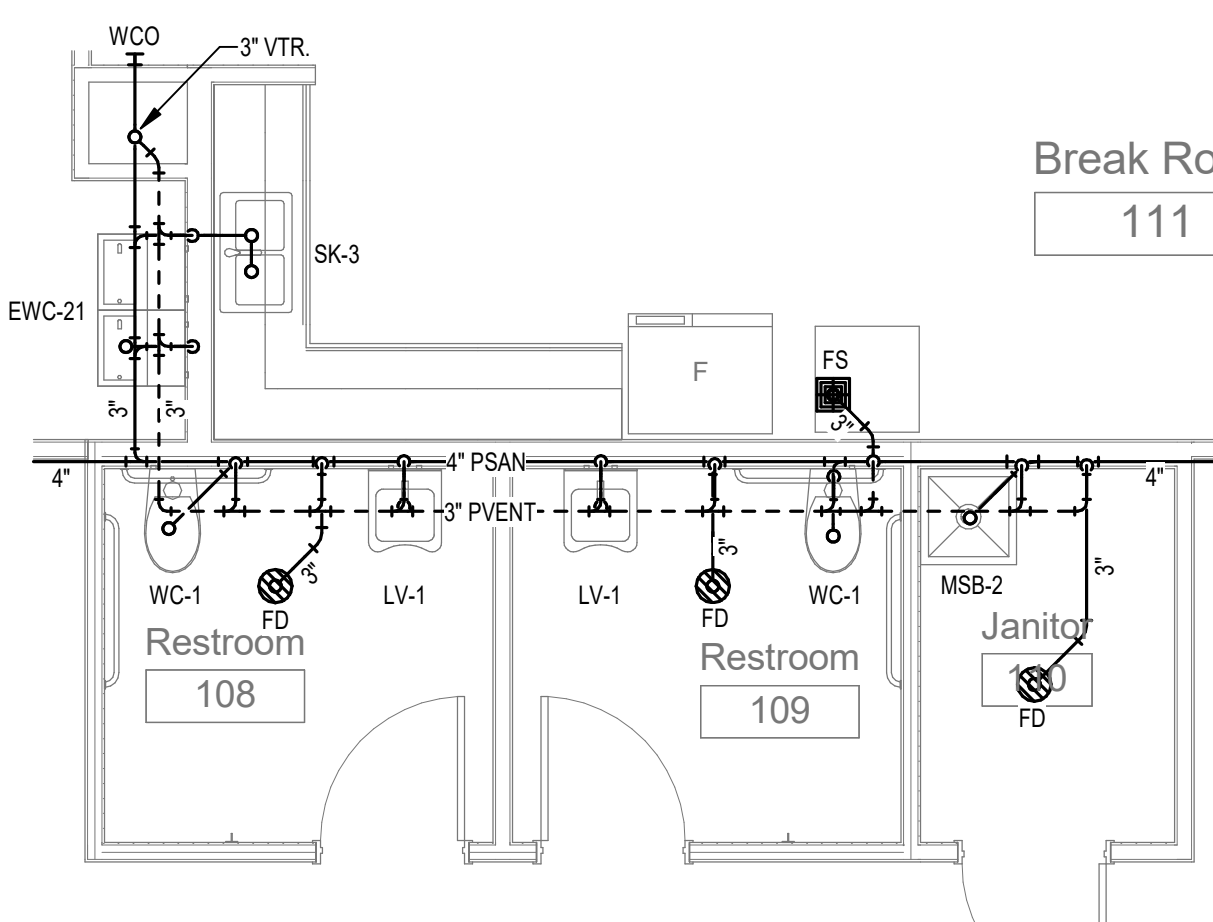
2
P2.1 ENLARGED PLAN - SUPPLY
1/4" = 1'-0"



1
P2.1 ENLARGED PLAN - WASTE & VENT
1/4" = 1'-0"



4
P2.1 ENLARGED PLAN - SUPPLY
1/4" = 1'-0"



3
P2.1 ENLARGED PLAN - WASTE & VENT
1/4" = 1'-0"

PROJECT TITLE:

COT E&G USC Warehouse
City of Tallahassee Electric & Gas Utility
2641 Municipal Way Tallahassee FL 32304

PROJECT NO.: 23.154

DESIGNED BY: RDR

DRAWN BY: SPD

CHECKED BY: RDF

THIS DRAWING AND ANY REPRODUCTIONS ARE THE PROPERTY AND COPYRIGHT OF BKJ, INC. AND MAY NOT BE PRODUCED, PUBLISHED, OR USED IN ANY MANNER WITHOUT WRITTEN PERMISSION OF THE ARCHITECT.

DRAWING PHASE

100% Construction Documents

DRAWING TITLE:

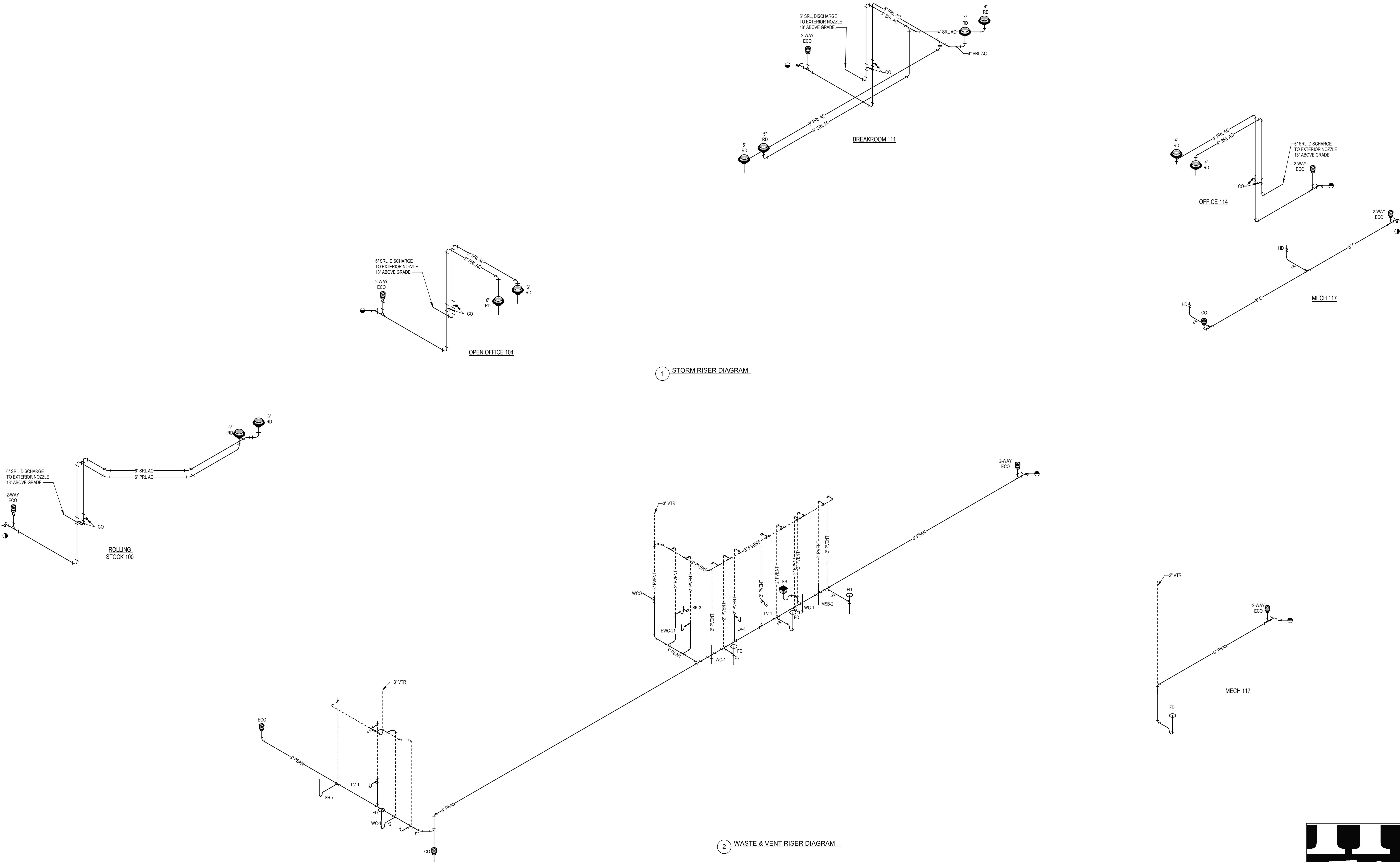
WASTE, VENT & STORM DIAGRAMS

SHEET NO. :

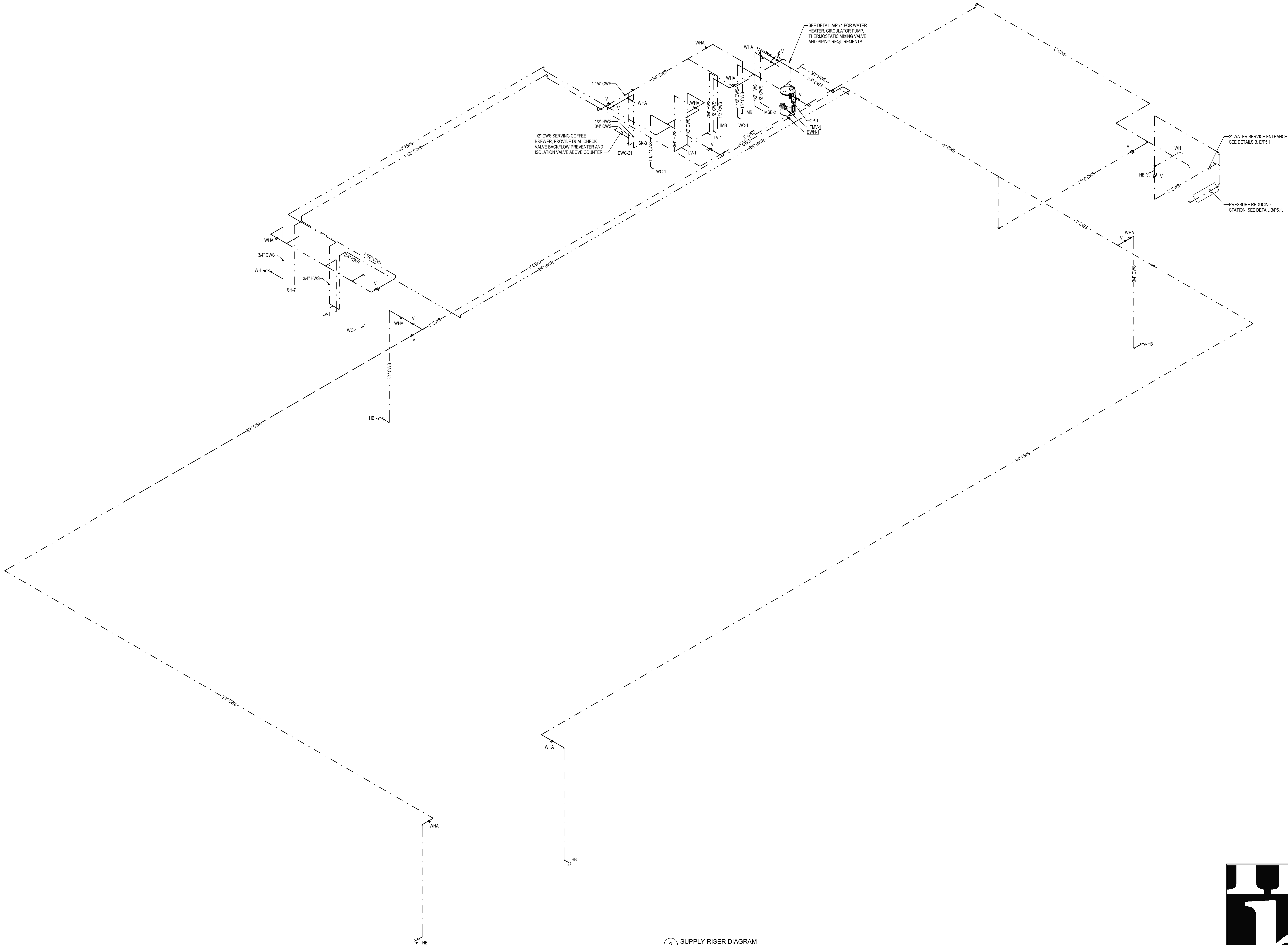
P3.1

DATE:

March 28, 2025



3/28/2025 11:02:28 AM



2 SUPPLY RISER DIAGRAM



BKJ, Inc., Architecture
1621 Physicians Dr.
Tallahassee, Florida 32308
(P) 850.778.8007 | (F) 850.546.6150
www.bkjarchitecture.com
FL Architecture Corporation AAD0002280

SEAL:

PROJECT TITLE:

COT E&G USC Warehouse
City of Tallahassee Electric & Gas Utility
2641 Municipal Way Tallahassee FL 32304

PROJECT NO.: 23.154

DESIGNED BY: **RDR**

DRAWN BY: **SPD**

CHECKED BY: **RDR**

THIS DRAWING AND ANY REPRODUCTIONS
ARE THE PROPERTY AND COPYRIGHT
OF BKJ, INC. AND MAY NOT BE
REPRODUCED, PUBLISHED, OR USED IN ANY
MANNER WITHOUT WRITTEN
PERMISSION OF THE ARCHITECT

REVISIONS:

DRAWING PHASE:

100% Construction
Documents

DRAWING TITLE:

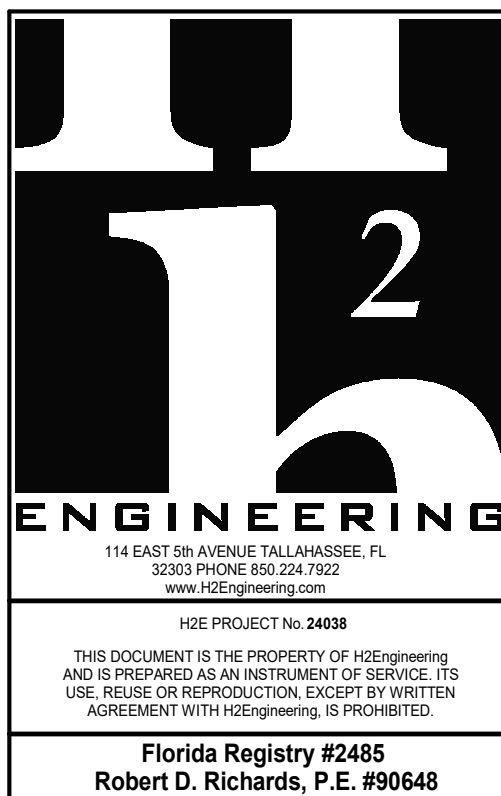
SUPPLY RISER
DIAGRAM

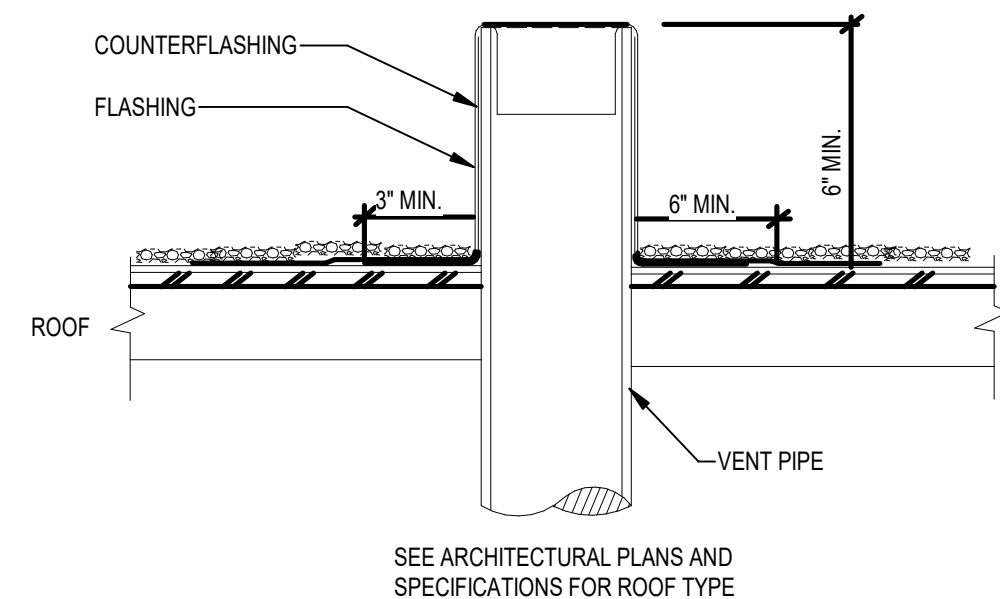
SHEET NO.:

P3.2

DATE:

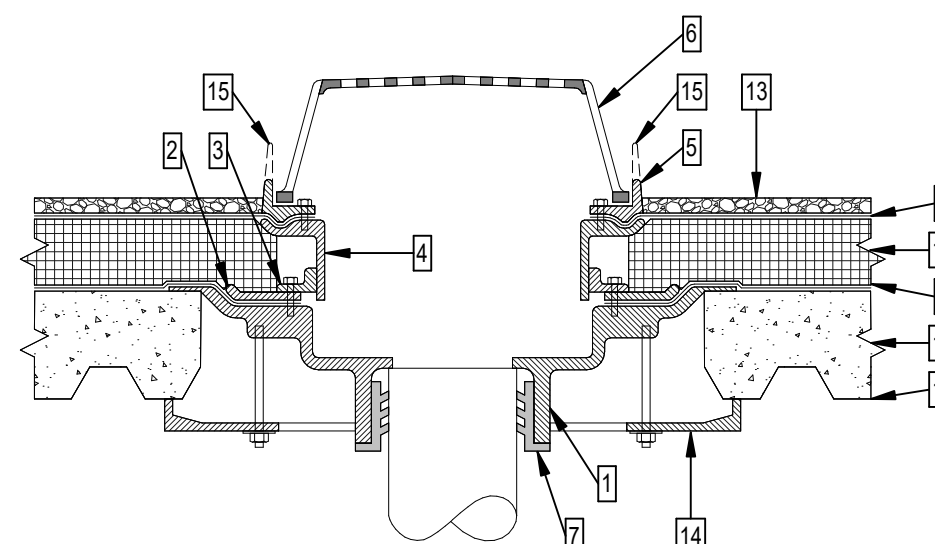
March 28, 2025





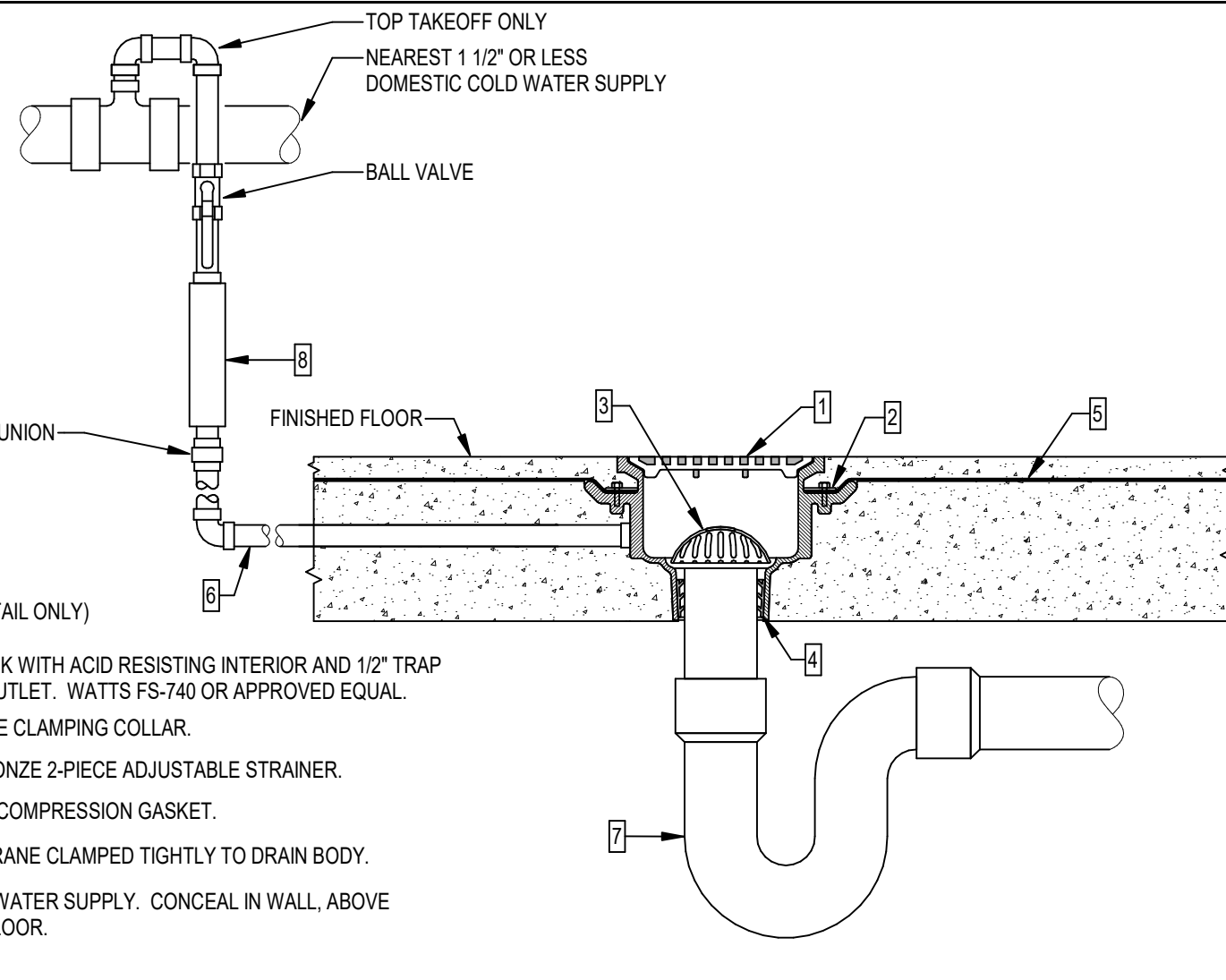
- NOTES:
1. FLASHING AND COUNTERFLASHING FURNISHED BY PLUMBING CONTRACTOR AND INSTALLED BY ROOFING CONTRACTOR.
 2. PAINT VENT TO MATCH ROOF.

K	VENT THRU ROOF
---	----------------



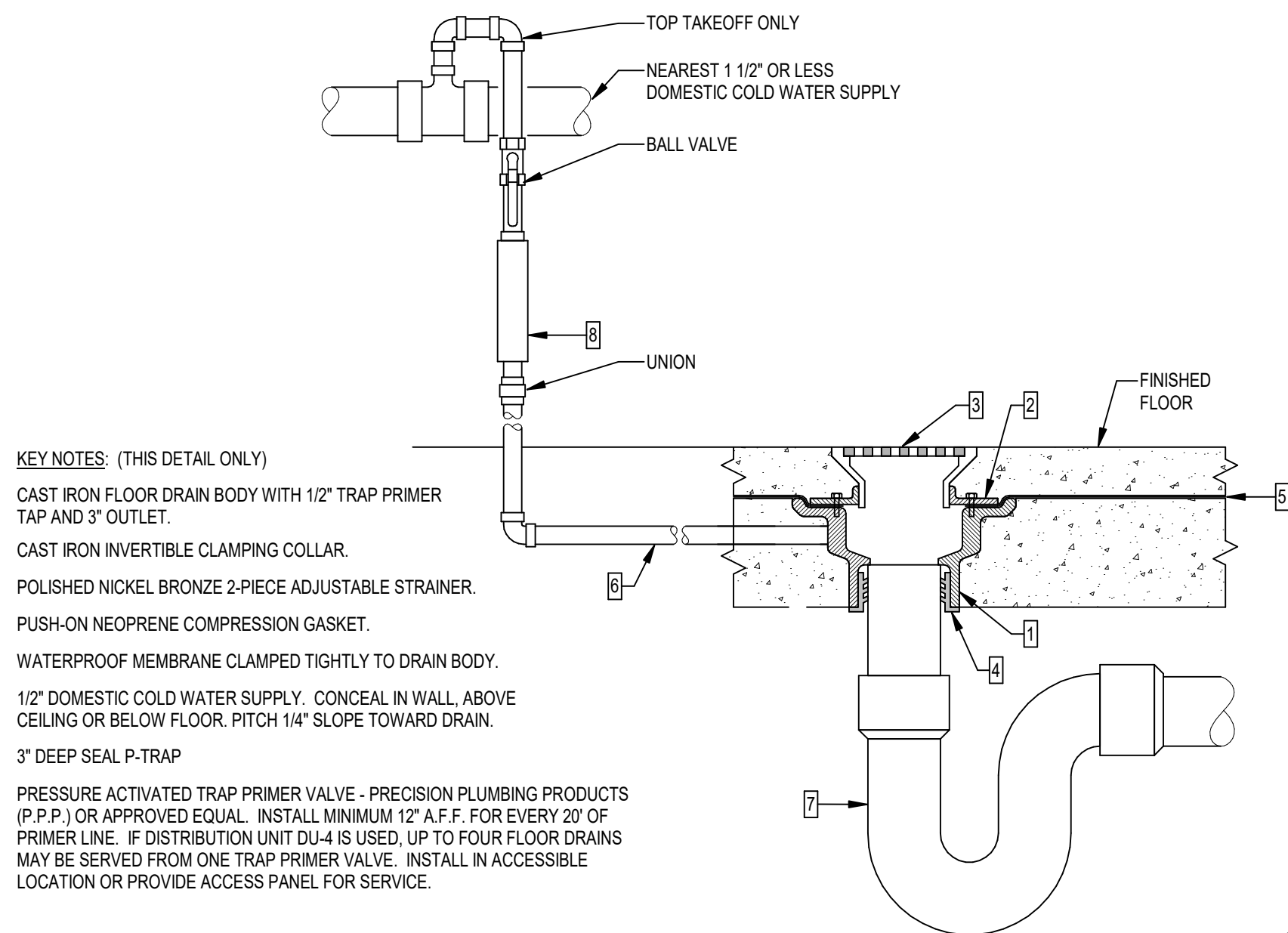
- | | |
|--|--|
| KEY NOTES: (THIS DETAIL ONLY) | |
| CAST IRON ROOF DRAIN BODY WITH HUB OUTLET. | 9 FLASHING CLAMPED TIGHTLY TO ADJUSTABLE COLLAR |
| SECONDARY CLAMP RING WITH SEEPAPE OPENINGS. | 10 STEEL ROOF PAN. |
| INVERTIBLE SUPPORT RING. | 11 CONCRETE ROOF DECK. |
| ADJUSTABLE COLLAR. | 12 INSULATION. |
| CLAMP RING WITH GRAVEL STOP. | 13 2 PLY MOD. BITUMEN ROOFING |
| LOOKING DOWN STRAINER | 14 DECK CLAMP. |
| PUSH-ON NEOPRENE COMPRESSION GASKET. | 15 2" EXTERNAL WATER DAM (FOR USE WITH SECONDARY OVERFLOW ROOF DRAINS ONLY). |
| WATERPROOF MEMBRANE CLAMPED TIGHTLY TO DRAIN BODY. | |

L TYPICAL ROOF DRAIN DETAIL



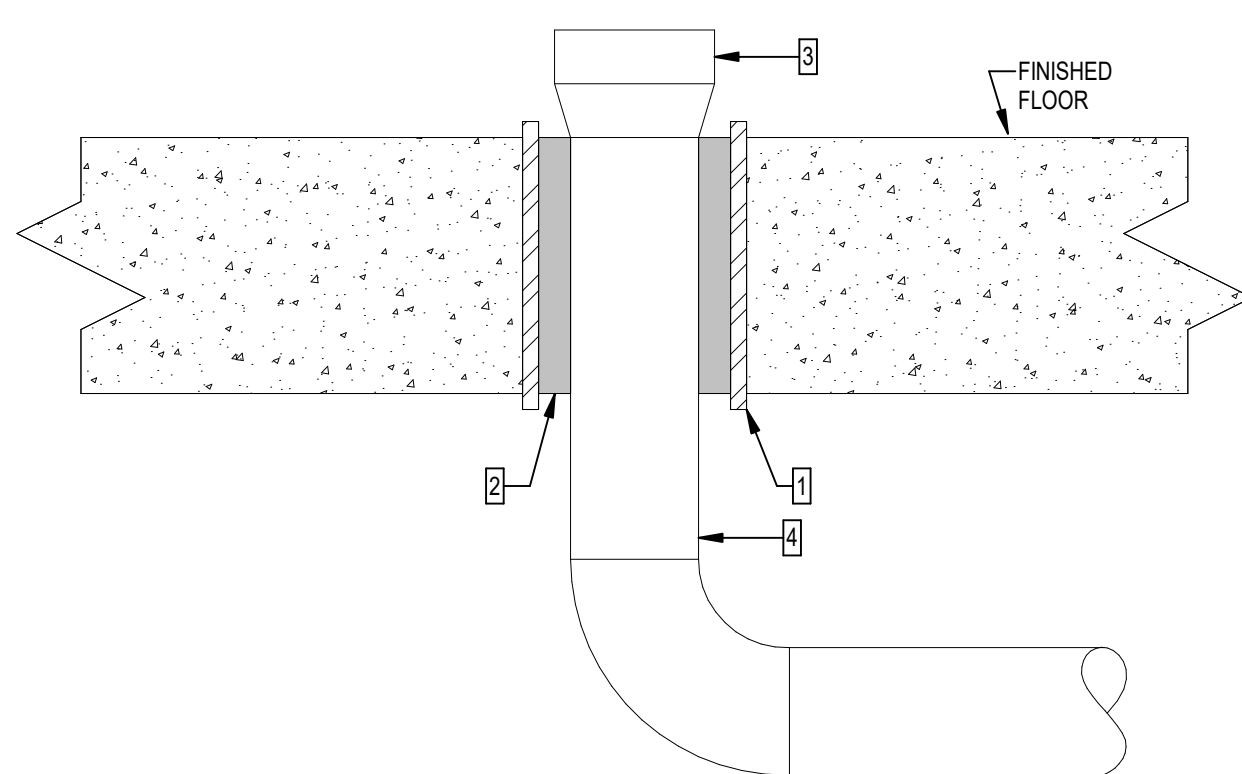
- KEY NOTES: (THIS DETAIL ONLY)
- CAST IRON FLOOR SINK WITH CLAMP RESISTING INTERIOR AND 12" TR
PRIMER TAP AND 2" OUTLET. WATTS FS-740 OR APPROVED EQUIV.
- CAST IRON INVERTIBLE CLAMPING CLACK.
- POLISHED NICKEL BRONZE 2-PIECE ADJUSTABLE STRAINER.
- PUSH-ON NEOPRENE COMPRESSION GASKET.
- WATERPROOF MEMBRANE CLAMPED TIGHTLY TO DRAIN BODY.
- 1/2" DOMESTIC COLD WATER SUPPLY. CONCEAL IN WALL, ABOVE
CEILING OR BELOW FLOOR.
- 3" DEEP SEAL P-TAP.
- PRESSURE ACTIVATED TRAP PRIMER VALVE - PRECISION PLUMBING
PRODUCTS (P.P.P.) OR APPROVED EQUIV. INSTALL MINIMUM 12"
A.F.F. FOR EVERY 20' OF PRIMER LINE. IF DISTRIBUTION UNIT DU-4
IS USED, UP TO FOUR FLOOR DRAINS MAY BE SERVED FROM ONE
TRAP PRIMER VALVE. INSTALL IN ACCESSIBLE LOCATION OR
PROVIDE ACCESS PANEL FOR SERVICE.

M	FLOOR SINK
---	------------



- KEY NOTES:** (THIS DETAIL ONLY)
- 1 CAST IRON FLOOR DRAIN BODY WITH 1/2" TRAP
TAP AND 3" OUTLET.
- 2 CAST IRON INVERTIBLE CLAMPING COLLAR.
- 3 POLISHED NICKEL BRONZE 2" PECE ADJUSTABLE STRAINER.
PUSH-ON NEOPRENE COMPRESSION GASKET.
- 4 WATERPROOF MEMBRANE CLAMPED TIGHTLY TO TRAP WALL.
- 5 12" DOMESTIC COLD WATER SUPPLY. CONCEAL IN DUCT ABOVE
CEILING OR BELOW FLOOR. PITCH 1/4" SLOPE TOWARD DRAIN.
- 3" DEEP SEAL P-TAP
- PRESSURE ADJUSTED TRAP WATER VALVE - PRECISION PLUMBING PRODUCTS
(P.P.P.) OR APPROVED EQUIV. INSTALL MINIMUM 12" A.F.F. FOR EVERY 20"
OF DRAIN OR PROVIDE DISTRIBUTION LINE DUAL IS USED TO UP FOUR FLOOR DRAINS
AND DOWN FROM ONE TRAP PRIMER VALVE. NOT INSTALL IN ACCESSIBLE
LOCATION OR PROVIDE ACCESS PANEL FOR SERVICE.

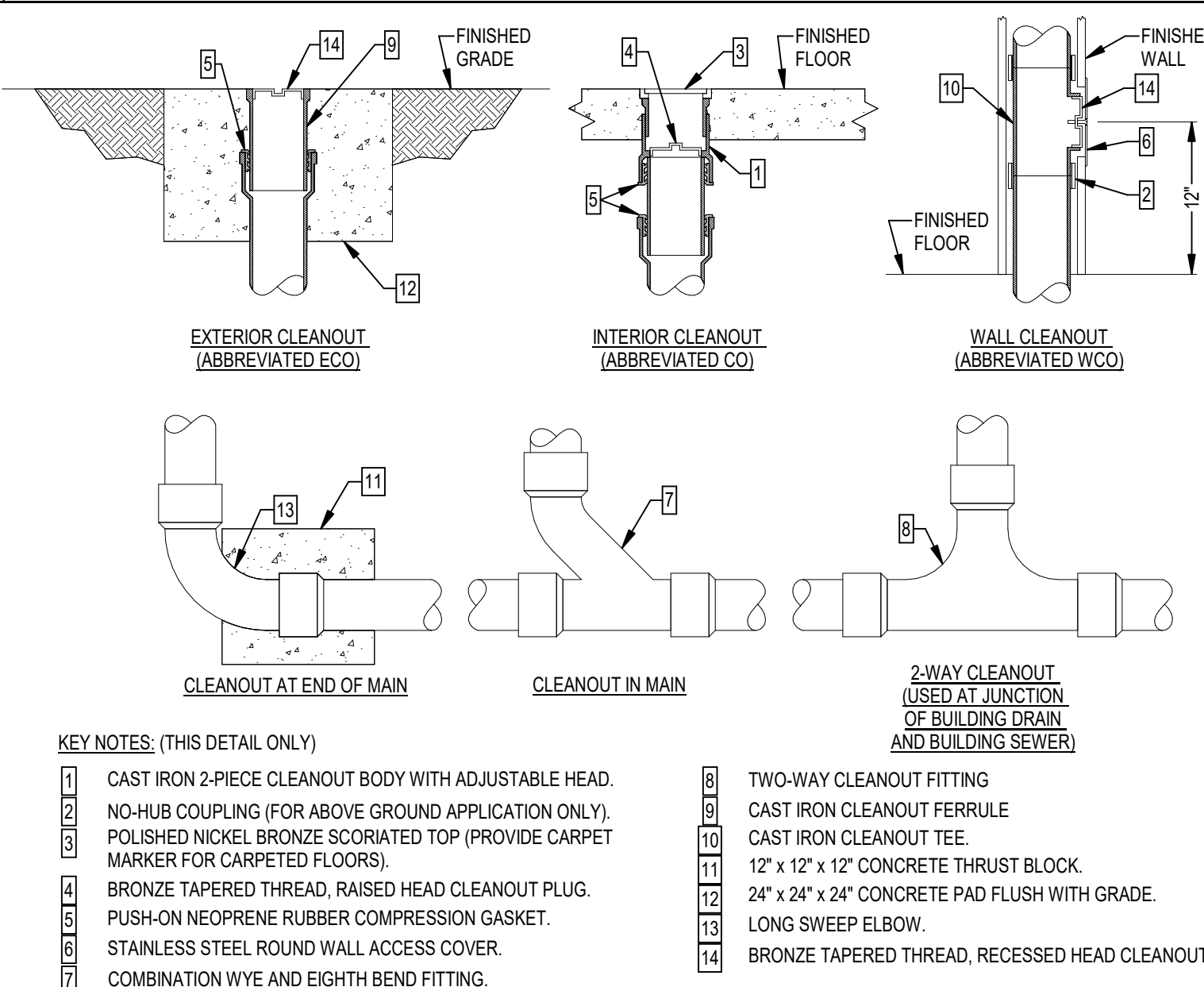
F	FLOOR DRAIN
---	-------------



- KEY NOTES: (THIS DETAIL ONLY)**
- 1 STEEL SLEEVE GROUTED IN PLACE IN FLOOR. SIZE MINIMUM TO 1" MAXIMUM CLEARANCE BETWEEN PIPE AND SLEEVE.
 - 2 FILL ANNULAR SPACE WITH FIRE STOPPING MATERIAL.
 - 3 HUB END OF PIPE (SIZE INDICATED ON DRAWINGS).
 - 4 PIPE THRU FLOOR SLAB.

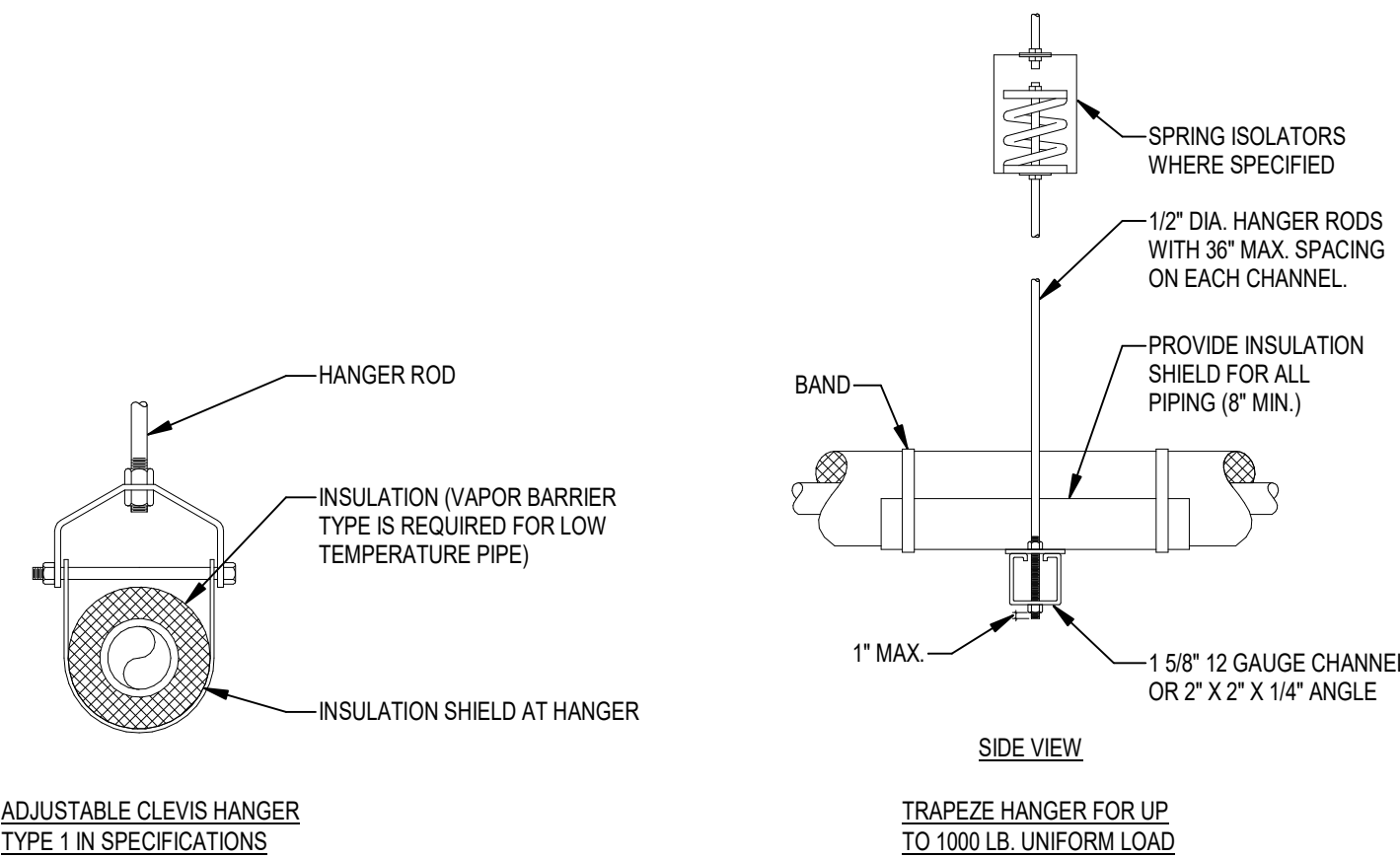
- NOTES:**
1. THIS DETAIL IS SHOWN AS AN EXAMPLE OF THE WORK SCOPE REQUIRED. FIRE STOPPING SHALL BE IN ACCORDANCE WITH THE REQUIREMENTS OF THE U.L. LISTED FIRE RATED ASSEMBLY. REFER TO ARCHITECTURAL DRAWINGS FOR LOCATIONS OF ALL FIRE RATED ASSEMBLIES.

G	HUB DRAIN
---	-----------



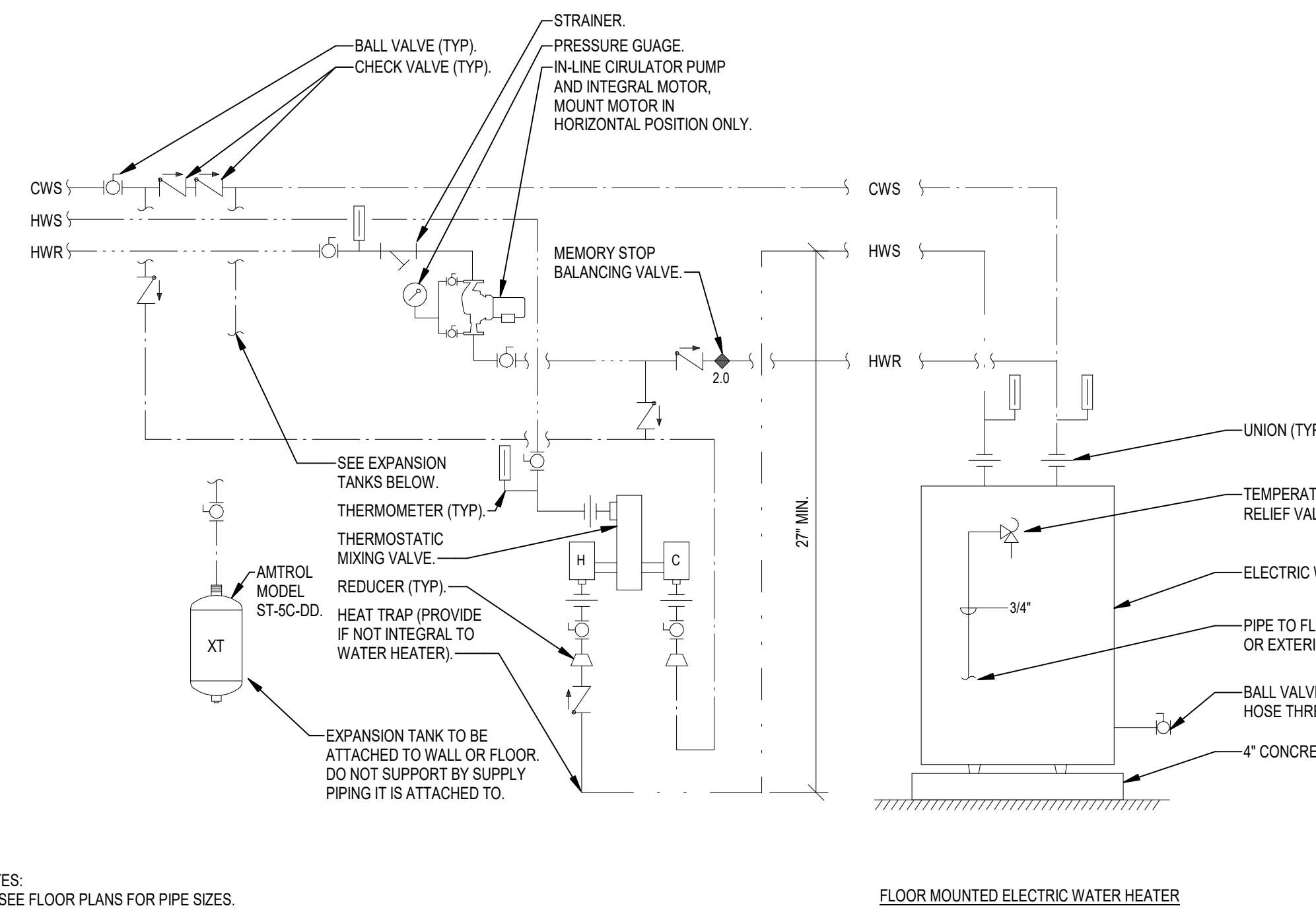
- | KEY NOTES: (THIS DETAIL ONLY) | | (AND BUILDING SEWER) | |
|-------------------------------|--|----------------------|--|
| 1 | CAST IRON 2-PIECE CLEANOUT BODY WITH ADJUSTABLE HEAD | 2 | TWO-WAY CLEANOUT FITTING |
| 3 | NH-NUB COUPLING (FOR ABOVE GROUND APPLICATION ONLY) | 6 | CAST IRON CLEANOUT FERRULE |
| 4 | POLISHED METAL BRONZE SCORICATED TOP (PROVIDE CARPET MATS FOR CARPETED FLOORS) | 7 | CAST IRON CLEANOUT TEE |
| 5 | BRONZE TAPERED THREAD, RAISED HEAD CLEANOUT PLUG | 11 | 12" x 12" x 12" CONCRETE TRUSS BRACE |
| 6 | PUSH-ON NEOPRENE RUBBER COMPRESSION GASKET | 12 | 24" x 24" x 24" CONCRETE PAD FLUSH WITH GRADE |
| 7 | STAINLESS STEEL ROUND WALL ACCESS COVER | 13 | LONG SWEET ELBOW |
| 8 | COMBINATION WYE AND EIGHTH BEND FITTING | 14 | BRONZE TAPERED THREAD, RECESSED HEAD CLEANOUT PLUG |

H	CLEANOUTS
---	-----------



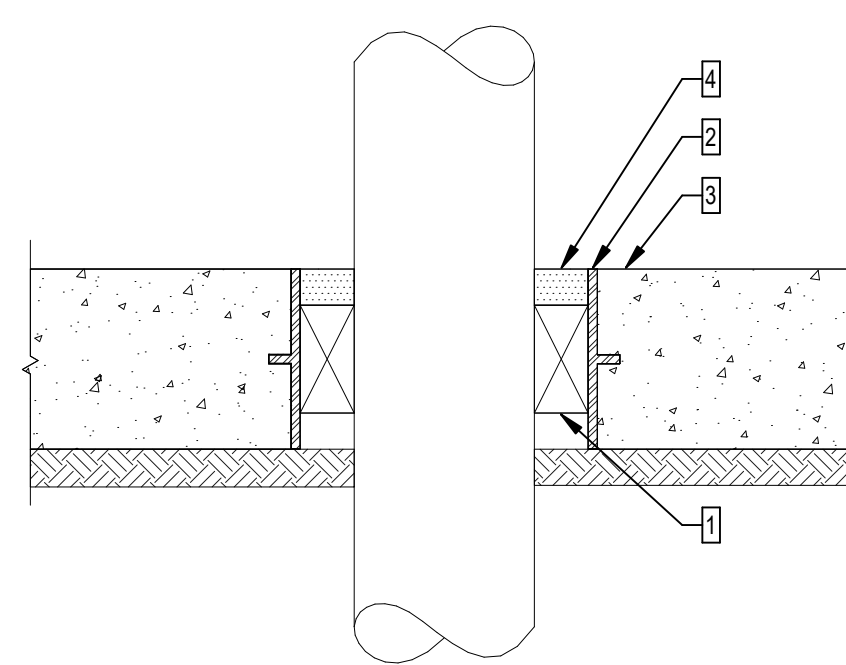
- NOTES:**
1. SEE SPECIFICATIONS FOR SPACING OF HANGERS.
 2. PROVIDE SPRING ISOLATORS FOR FIRST 3 HANGERS UP TO AND BEYOND EQUIPMENT CONNECTION AND/OR THROUGHOUT MECHANICAL ROOMS OR MEZZANINE AREAS.

J TYPICAL PIPE HANGERS



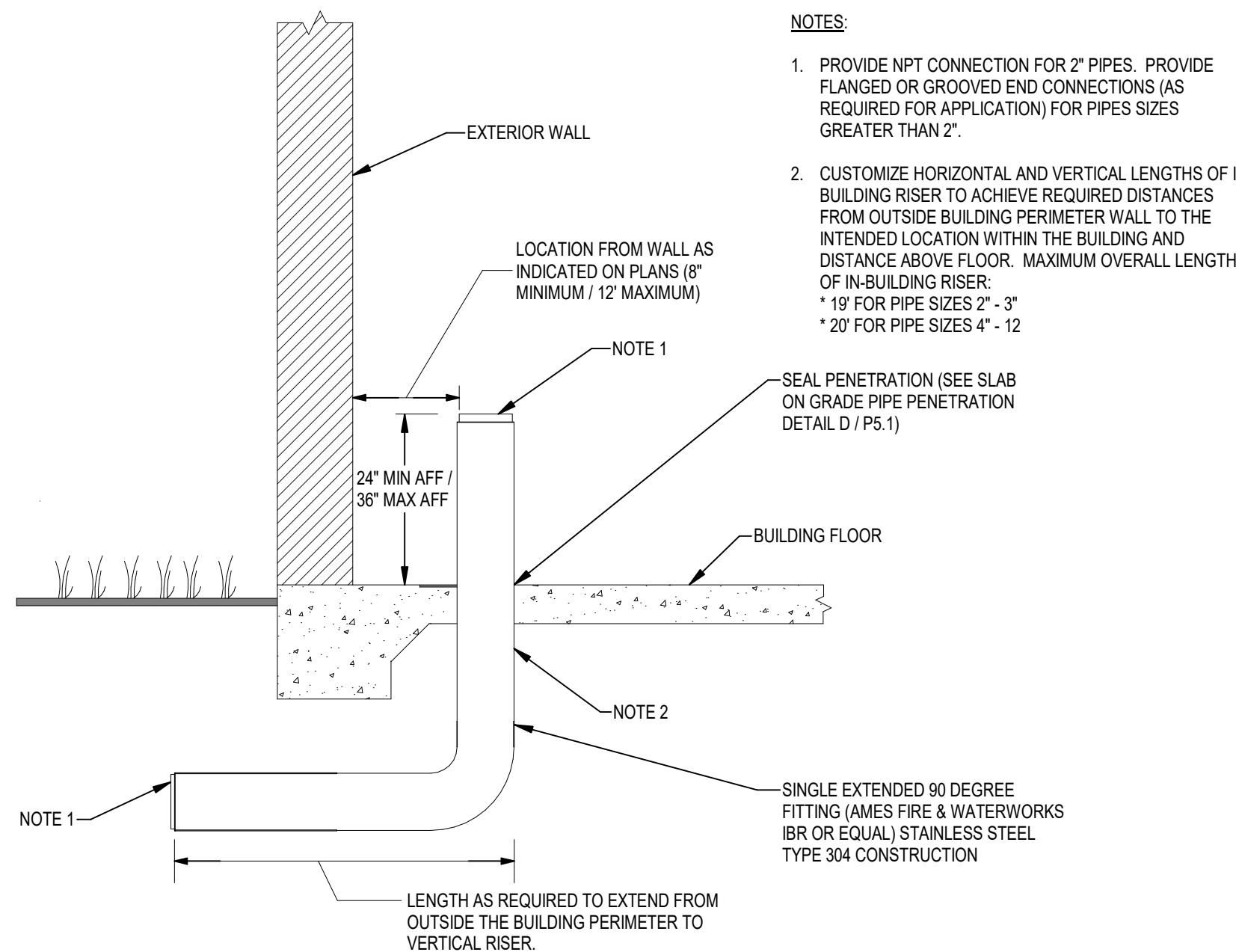
- NOTES:
1. SEE FLOOR PLANS FOR PIPE SIZES.
 2. COLD AND HOT WATER PIPE SIZES TO TMV SHALL BE SAME SIZE AS COLD WATER PIPE SIZE TO WATER HEATER.
 3. PROVIDE 3-POLE CONTACTOR IN POWER SUPPLY TO SHUT OFF POWER BY MEANS OF AQUASTAT.
 4. PROVIDE HEAT TRAPS ON COLD WATER INLET AND HOT WATER OUTLET OF WATER HEATER.
 5. PIPE T&P RELIEF VALVE FULL SIZE TO FLOOR DRAIN.
 6. PIPE DRAIN VALVE FULL SIZE TO FLOOR DRAIN OR EXTERIOR.

A DOMESTIC HOT WATER SYSTEM



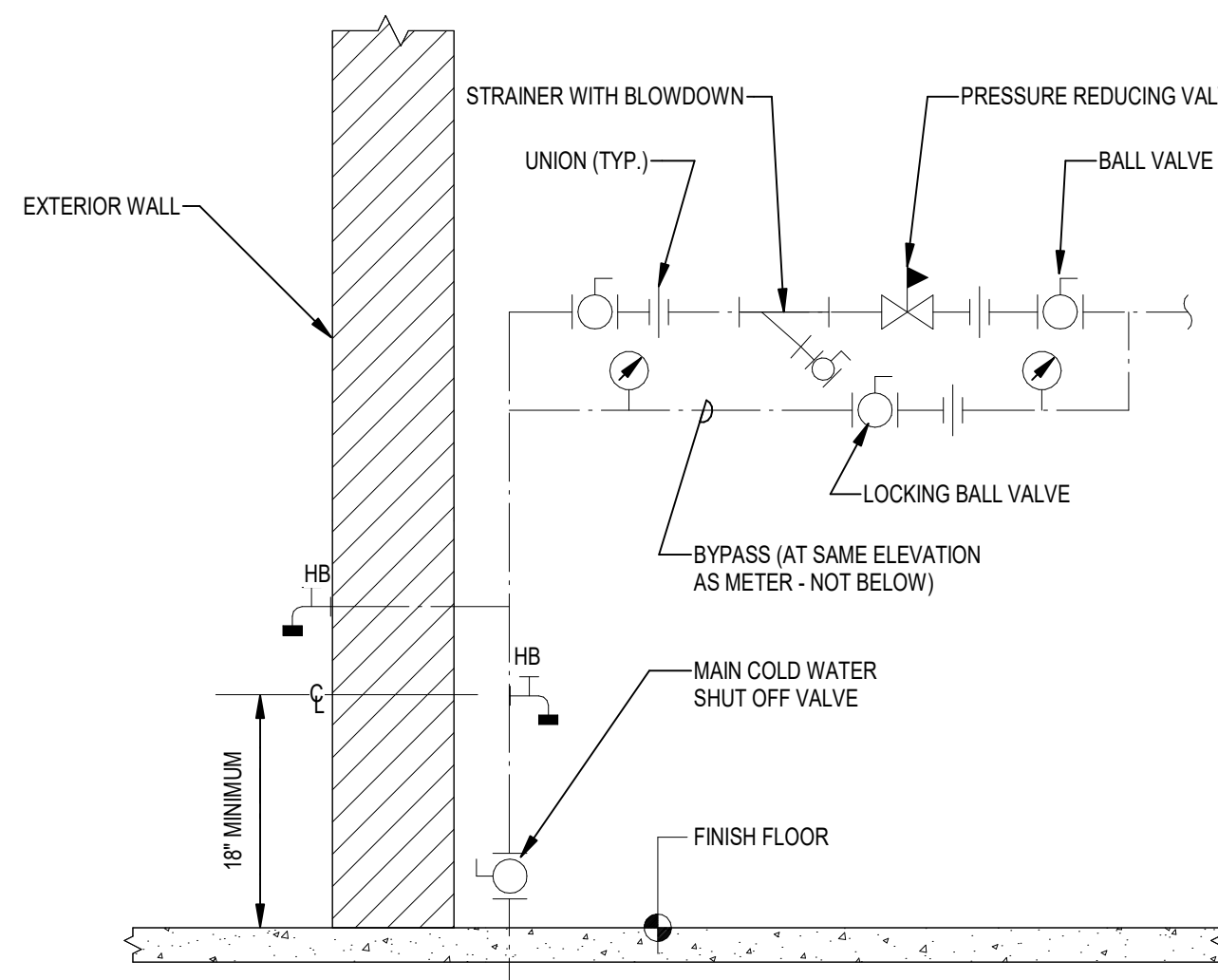
- KEY NOTES: (THIS DETAIL ONLY)**
- 1 SEAL ANNULAR SPACE AROUND PIPE WITH MODULAR SLEEVE SEAL SYSTEM. MODEL SHALL BE SUITABLE FOR THIS APPLICATION.
 - 2 SLEEVE OR CORE DRILL APPROPRIATE SIZE HOLE ACCORDING TO MANUFACTURER'S RECOMMENDATIONS
 - 3 FLOOR SLAB ON GRADE.
 - 4 COMPLETELY FILL SPACE WITH SEALANT SUITABLE FOR THIS APPLICATION.

D SLAB ON GRADE PIPE PENETRATION



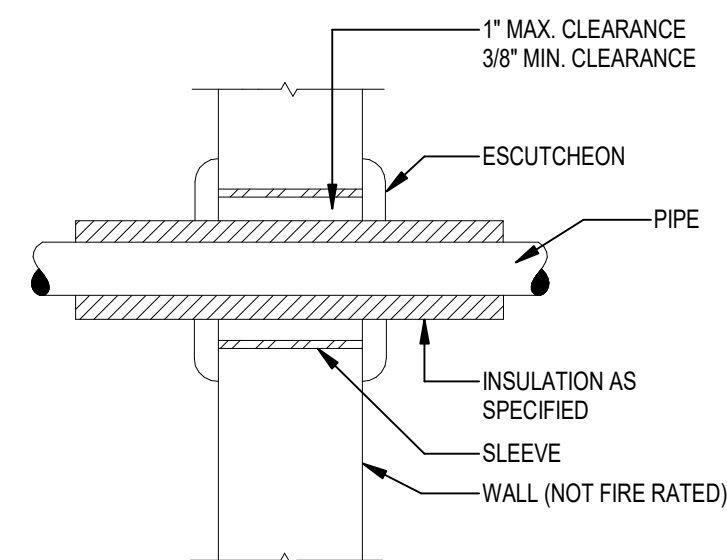
- NOTES:**
1. PROVIDE NPT CONNECTION FOR 2" PIPES. PROVIDE FLANGED OR GROOVED END CONNECTIONS (AS REQUIRED FOR APPLICATION) FOR PIPES SIZES GREATER THAN 2".
 2. CUSTOMIZE HORIZONTAL AND VERTICAL LENGTHS OF BUILDING RISER TO ACHIEVE REQUIRED DISTANCES FROM OUTSIDE BUILDING PERIMETER WALL TO THE INTENDED LOCATION WITHIN THE BUILDING AND DISTANCE ABOVE FLOOR. MAXIMUM OVERALL LENGTH OF IN-BUILDING RISER:
 - * 19' FOR PIPE SIZES 2" - 3"
 - * 20' FOR PIPE SIZES 4" - 12"

E SINGLE PIECE IN-BUILDING RISER



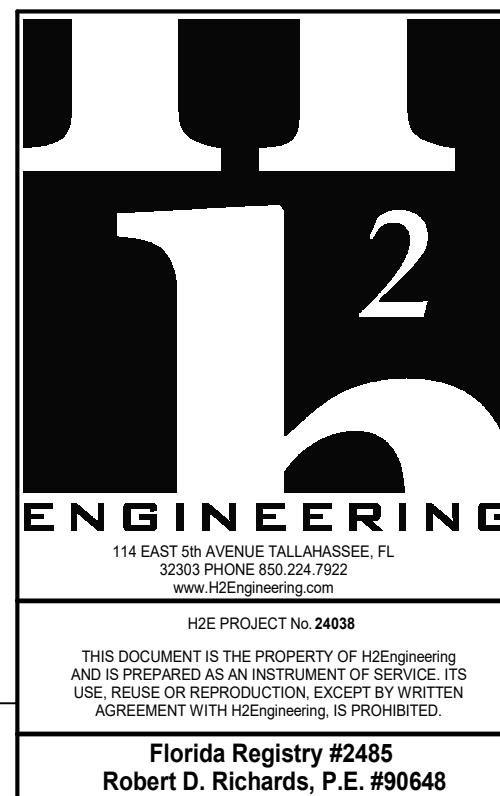
-
- The diagram illustrates the installation of a water meter. On the left, a vertical hatched area represents the exterior wall. Two horizontal lines enter from the left: the top line is labeled 'HB' and the bottom line is labeled 'C'. A vertical arrow pointing upwards from the 'C' line is labeled 'MINIMUM'. To the right of the wall, a horizontal pipe runs. A vertical line labeled 'MAIN COLD WATER SHUT OFF VALVE' connects to this pipe. The pipe continues to the right, passing through a 'STRAINER WITH BLOWDOWN' (indicated by a downward arrow), a 'UNION (TYP.)', a 'PRESSURE REDUCING VALVE' (indicated by a downward arrow), and a 'BALL VALVE (TYP.)'. Below the main line, a 'BYPASS (AT SAME ELEVATION AS METER - NOT BELOW)' line connects to the main line. This bypass line contains a 'LOCKING BALL VALVE' and a pressure gauge. The main line also has a pressure gauge before the strainer. The entire system is labeled 'FINISH FLOOR' at the bottom.

B	WATER SERVICE ENTRANCE
----------	-------------------------------



-
- 1" MAX. CLEARANCE
3/8" MIN. CLEARANCE
- ESCUTCHEON
- PIPE
- INSULATION AS SPECIFIED
- SLEEVE
- WALL (NOT FIRE RATED)

C PIPE PENETRATION OF NON-FIRE RATED WALL



HGE PROJECT No. 24038

THIS DOCUMENT IS THE PROPERTY OF HGE Engineering, INC. AND IS PREPARED AS AN INSTRUMENT OF SERVICE. USE, REUSE OR REPRODUCTION, EXCEPT BY WRITTEN AGREEMENT WITH HGE Engineering, IS PROHIBITED.

Florida Registry #2485
Robert D. Richards, P.E. #90648