

FIXTURE UNIT CALCULATIONS - BUILDING C

FIXTURE TYPE		QUANTITY	WASTE		SUPPLY						
					COLD		HOT		TOTAL		
			UNIT	TOTAL	UNIT	TOTAL	UNIT	TOTAL	UNIT	TOTAL	
CAR WASH SYSTEM	DRINKING FOUNTAIN	1	0.5	0.5	0.25	0.25			0.25	0.25	
	LAVATORY	2	1	2	1.5	3	1.5	3	2	4	
	SINK	3	2	6	2	6	2	6	3	9	
	MOP SERVICE BASIN	1	2	2	2.25	2.25	2.25	2.25	3	3	
	WATER CLOSET (FLUSH VALVE)	2	6	12	10	20			10	20	
	HOSE BIBB / WALL HYDRANT	9			4	36			4	36	
	FLOOR DRAIN/FLOOR SINK	8	2	16							
	REFRIGERATOR ICE MAKER	1			1	1			1	1	
	TRENCH DRAIN (MAINT. BAY)	2	4	8							
	EMERGENCY EYEWASH/SHOWER	1	4	4	7	7			7	7	
	HOSE REEL (MAINT. BAY)	1			4	4			4	4	
	CAR WASH SYSTEM										
	PRESSURE WASHER	2			4	8			4	8	
	RECLAIMED WATER SUPPLY/DRAIN	1	350	350	500	500			500	500	
WINDSHIELD WASHER FLUID	1			4	4			4	4		
LAUNDRY FIXTURES											
WASHING MACHINE (30 LB)	1	30	30	20	20	20	20	30	30		
TOTAL FIXTURE UNITS				430.5		611.5		31.25		626.25	
DOMESTIC WATER DEMAND (GPM)						158.2		44.3		160.2	

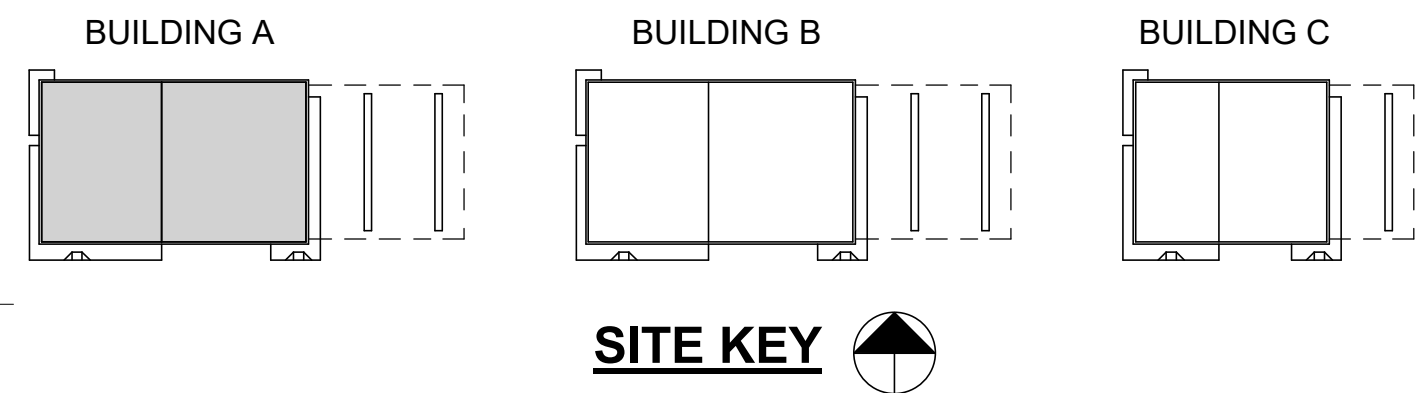
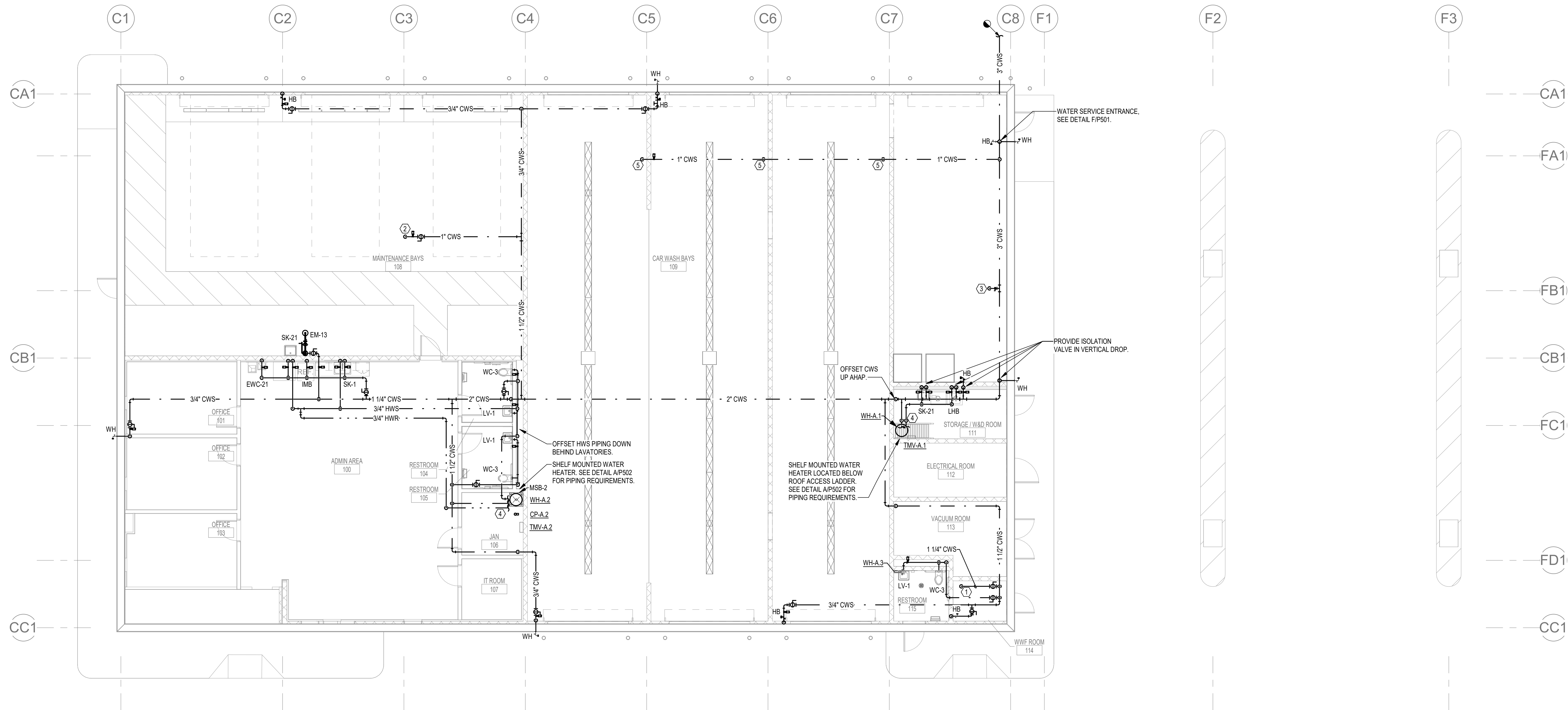
FIXTURE UNIT CALCULATIONS - BUILDING A

FIXTURE TYPE		QUANTITY	WASTE		SUPPLY						
					COLD		HOT		TOTAL		
			UNIT	TOTAL	UNIT	TOTAL	UNIT	TOTAL	UNIT	TOTAL	
	DRINKING FOUNTAIN	1	0.5	0.5	0.25	0.25			0.25	0.25	
	LAVATORY	3	1	3	1.5	4.5	1.5	4.5	2	6	
	SINK	2	2	4	2	4	2	4	3	6	
	MOP SERVICE BASIN	1	2	2	2.25	2.25	2.25	2.25	3	3	
	WATER CLOSET (FLUSH VALVE)	3	6	18	10	30			10	30	
	HOSE BIBB / WALL HYDRANT	9			4	36			4	36	
	FLOOR DRAIN/FLOOR SINK	9	2	18							
	REFRIGERATOR ICE MAKER	1			1	1			1	1	
	TRENCH DRAIN (MAINT. BAY)	3	4	12							
	EMERGENCY EYEWASH/SHOWER	1	4	4	7	7			7	7	
	HOSE REEL (MAINT. BAY)	2			4	8			4	8	
	CAR WASH SYSTEM										
	PRESSURE WASHER	3			4	12			4	12	
	RECLAIMED WATER SUPPLY/DRAIN	1	700	700	1000	1000			1000	1000	
WINDSHIELD WASHER FLUID	1			4	4			4	4		
LAUNDRY FIXTURES											
WASHING MACHINE (30 LB)	1	30	30	20	20	20	20	30	30		
TOTAL FIXTURE UNITS				791.5		1129		30.75		1143.25	
DOMESTIC WATER DEMAND (GPM)						224.0		44.2		225.8	

FIXTURE UNIT CALCULATIONS - BUILDING B

FIXTURE TYPE		QUANTITY	WASTE		SUPPLY						
					COLD		HOT		TOTAL		
			UNIT	TOTAL	UNIT	TOTAL	UNIT	TOTAL	UNIT	TOTAL	
	DRINKING FOUNTAIN	1	0.5	0.5	0.25	0.25			0.25	0.25	
	LAVATORY	3	1	3	1.5	4.5	1.5	4.5	2	6	
	SINK	2	2	4	2	4	2	4	3	6	
	MOP SERVICE BASIN	1	2	2	2.25	2.25	2.25	2.25	3	3	
	WATER CLOSET (FLUSH VALVE)	3	6	18	10	30			10	30	
	HOSE BIBB / WALL HYDRANT	9			4	36			4	36	
	FLOOR DRAIN/FLOOR SINK	9	2	18							
	REFRIGERATOR ICE MAKER	1			1	1			1	1	
	TRENCH DRAIN (MAINT. BAY)	3	4	12							
	EMERGENCY EYEWASH/SHOWER	1	4	4	7	7			7	7	
	HOSE REEL (MAINT. BAY)	2			4	8			4	8	
	CAR WASH SYSTEM										
	PRESSURE WASHER	3			4	12			4	12	
RECLAIMED WATER SUPPLY/DRAIN	1	700	700	1000	1000			1000	1000		
WINDSHIELD WASHER FLUID	1			4	4			4	4		
LAUNDRY FIXTURES											
WASHING MACHINE (30 LB)	1	30	30	20	20	20	20	30	30		
TOTAL FIXTURE UNITS				791.5		1129		30.75		1143.25	
DOMESTIC WATER DEMAND (GPM)						224.0		44.2		225.8	

1 1/8" = 1'-0" SUPPLY FLOOR PLAN - BUILDING A



KEYNOTES				
1	PROVIDE RPZ, CONNECT CWS TO WINDSHIELD WASHER FLUID SYSTEM, SEE SHEET QM701 FOR REFERENCE.			
2	CONNECT 1\" CWS TO HOSE REEL SYSTEM, SEE SHEET QM700 FOR REFERENCE.			
3	PROVIDE RPZ, CONNECT 3\" CWS TO RECLAIM WATER SYSTEM, SEE SHEET QC700 FOR REFERENCE.			
4	SEE SHELF MOUNTED WATER HEATER DETAIL A/P502 FOR CONNECTIONS REQUIREMENTS.			
5	PROVIDE RPZ AND 3/4\" CONNECTION TO PRESSURE WASHING EQUIPMENT IN THIS VICINITY. REFER TO QC DRAWINGS. PROVIDE ISOLATION VALVE IN DROP.			

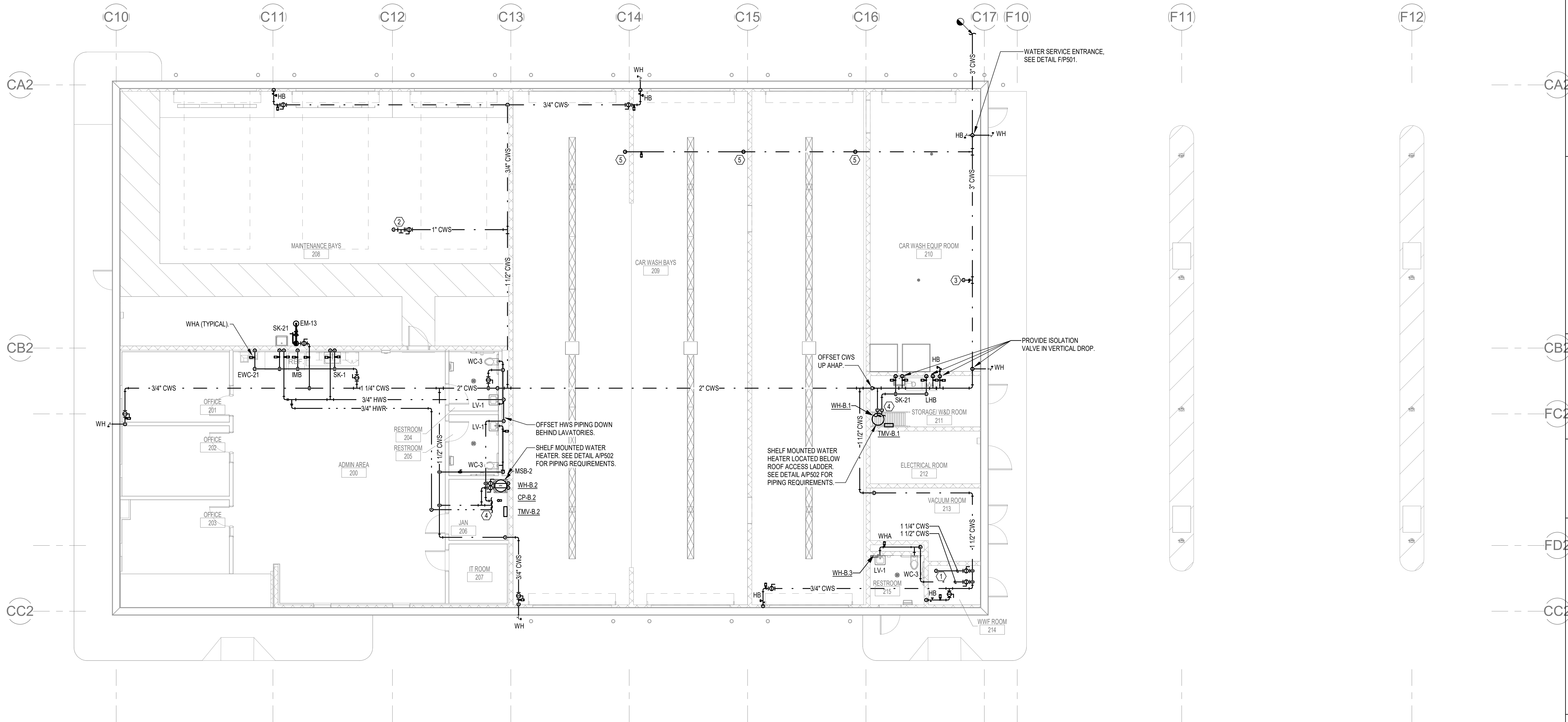
PROJECT # 18-28 THIS DOCUMENT IS THE PROPERTY OF KIMLEY-HORN AND ASSOCIATES, INC. AND IS NOT TO BE REPRODUCED OR TRANSMITTED IN ANY FORM OR BY ANY MEANS, ELECTRONIC OR MECHANICAL, INCLUDING PHOTOCOPYING, RECORDING, OR BY ANY INFORMATION STORAGE AND RETRIEVAL SYSTEM, WITHOUT THE WRITTEN PERMISSION OF KIMLEY-HORN AND ASSOCIATES, INC.		Kimley»Horn © 2020 KIMLEY-HORN AND ASSOCIATES, INC. 2815 CENTENNIAL BOULEVARD SUITE 102 TALLAHASSEE, FL 32309 TALLAHASSEE, FL 32309 WWW.KIMLEY-HORN.COM CA 0000696	
H2 ENGINEERING 114 EAST 7th AVENUE TALLAHASSEE, FL 32302 334.242.4242 www.h2engineering.com		Florida Registry #2485 Scott T. Craig Jr., P.E. FL LICENSE NUMBER #73938	
PROJECT NUMBER 144124059		DATE 01/17/2025	
DESIGNED BY RDR		DRAWN BY SPD	
CHECKED BY STC		NO.	
REVISIONS		DATE	
BY			

QUICK - TURNAROUND FACILITY
PREPARED FOR
TALLAHASSEE INTERNATIONAL AIRPORT

CITY OF
TALLAHASSEE
FLORIDA

SHEET NUMBER
P101

1 1/8" = 1'-0" SUPPLY FLOOR PLAN - BUILDING B

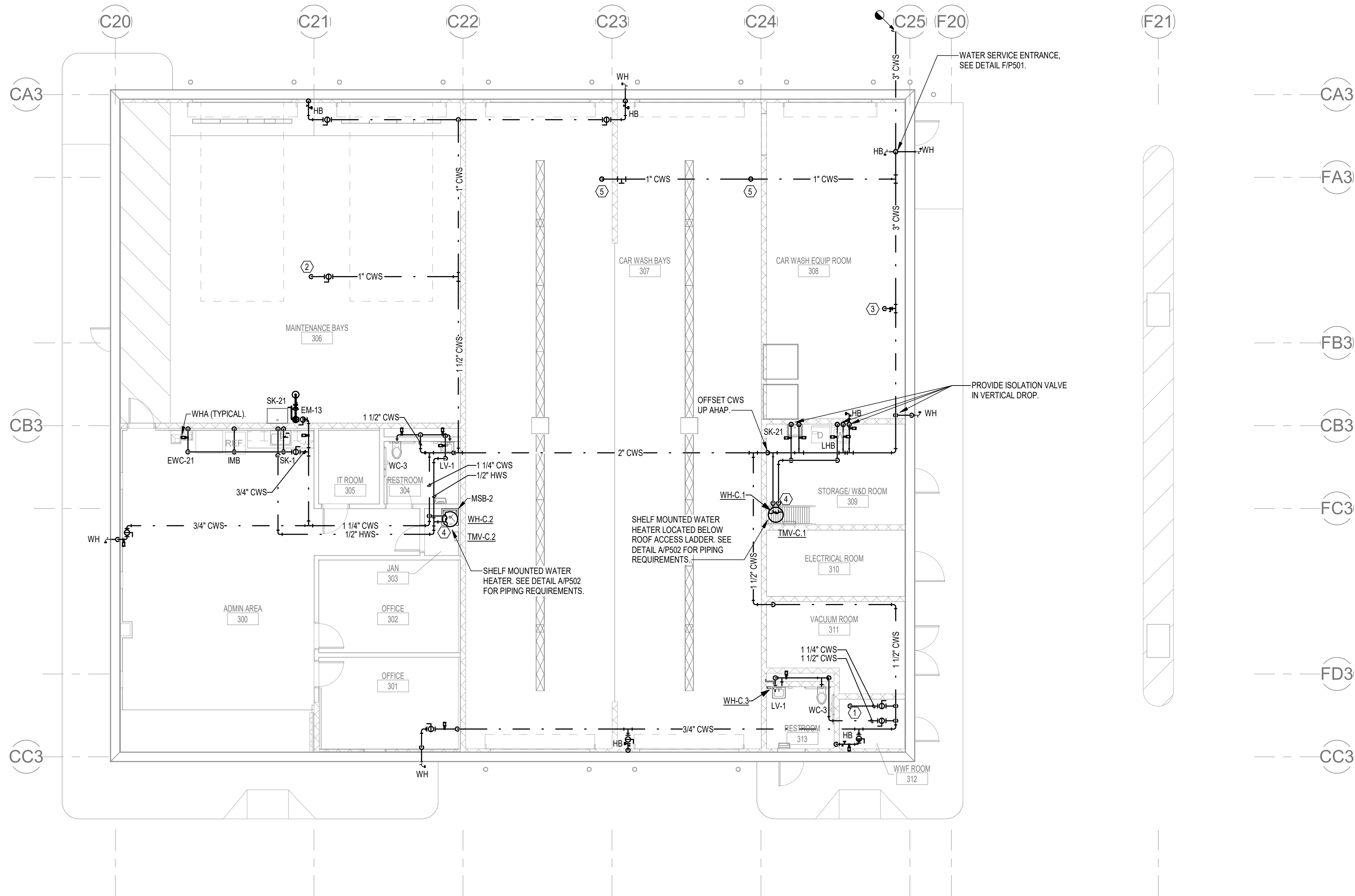


KEYNOTES

- 1 PROVIDE RPZ, CONNECT CWS TO WINDSHIELD WASHER FLUID SYSTEM, SEE SHEET QM701 FOR REFERENCE.
- 2 CONNECT 1" CWS TO HOSE REEL SYSTEM, SEE SHEET QM700 FOR REFERENCE.
- 3 PROVIDE RPZ, CONNECT 3" CWS TO RECLAIM WATER SYSTEM, SEE SHEET QC700 FOR REFERENCE.
- 4 SEE SHELF MOUNTED WATER HEATER DETAIL A/P502 FOR CONNECTIONS REQUIREMENTS.
- 5 PROVIDE RPZ AND 3/4" CONNECTION TO PRESSURE WASHING EQUIPMENT IN THIS VICINITY. REFER TO QC DRAWINGS. PROVIDE ISOLATION VALVE IN DROP.

PROJECT # 18-28 THIS DOCUMENT IS THE PROPERTY OF KIMLEY-HORN AND ASSOCIATES, INC. AND IS NOT TO BE REPRODUCED OR TRANSMITTED IN ANY FORM OR BY ANY MEANS, ELECTRONIC OR MECHANICAL, INCLUDING PHOTOCOPYING, RECORDING, OR BY ANY INFORMATION STORAGE AND RETRIEVAL SYSTEM, WITHOUT THE WRITTEN PERMISSION OF KIMLEY-HORN AND ASSOCIATES, INC.		Kimley»Horn © 2020 KIMLEY-HORN AND ASSOCIATES, INC. 2815 CENTENNIAL BOULEVARD SUITE 102 TALLAHASSEE, FL 32309 WWW.KIMLEY-HORN.COM CA 0000696	
PROJECT # 18-28 THIS DOCUMENT IS THE PROPERTY OF KIMLEY-HORN AND ASSOCIATES, INC. AND IS NOT TO BE REPRODUCED OR TRANSMITTED IN ANY FORM OR BY ANY MEANS, ELECTRONIC OR MECHANICAL, INCLUDING PHOTOCOPYING, RECORDING, OR BY ANY INFORMATION STORAGE AND RETRIEVAL SYSTEM, WITHOUT THE WRITTEN PERMISSION OF KIMLEY-HORN AND ASSOCIATES, INC.		Florida Registry #2485	
PROJECT # 18-28 THIS DOCUMENT IS THE PROPERTY OF KIMLEY-HORN AND ASSOCIATES, INC. AND IS NOT TO BE REPRODUCED OR TRANSMITTED IN ANY FORM OR BY ANY MEANS, ELECTRONIC OR MECHANICAL, INCLUDING PHOTOCOPYING, RECORDING, OR BY ANY INFORMATION STORAGE AND RETRIEVAL SYSTEM, WITHOUT THE WRITTEN PERMISSION OF KIMLEY-HORN AND ASSOCIATES, INC.		ENGINEERING 114 EAST 7th AVENUE TALLAHASSEE, FL 32302 WWW.KHENGINEERING.COM	
PROJECT # 18-28 THIS DOCUMENT IS THE PROPERTY OF KIMLEY-HORN AND ASSOCIATES, INC. AND IS NOT TO BE REPRODUCED OR TRANSMITTED IN ANY FORM OR BY ANY MEANS, ELECTRONIC OR MECHANICAL, INCLUDING PHOTOCOPYING, RECORDING, OR BY ANY INFORMATION STORAGE AND RETRIEVAL SYSTEM, WITHOUT THE WRITTEN PERMISSION OF KIMLEY-HORN AND ASSOCIATES, INC.		LISCENSED PROFESSIONAL Scott T. Craig Jr., P.E. FL LICENSE NUMBER #73938	
PROJECT # 18-28 THIS DOCUMENT IS THE PROPERTY OF KIMLEY-HORN AND ASSOCIATES, INC. AND IS NOT TO BE REPRODUCED OR TRANSMITTED IN ANY FORM OR BY ANY MEANS, ELECTRONIC OR MECHANICAL, INCLUDING PHOTOCOPYING, RECORDING, OR BY ANY INFORMATION STORAGE AND RETRIEVAL SYSTEM, WITHOUT THE WRITTEN PERMISSION OF KIMLEY-HORN AND ASSOCIATES, INC.		PROJECT NUMBER 144124059 DATE 01/17/2025 1/8" = 1'-0" DESIGNED BY RDR DRAWN BY SPD CHECKED BY STC	
PROJECT # 18-28 THIS DOCUMENT IS THE PROPERTY OF KIMLEY-HORN AND ASSOCIATES, INC. AND IS NOT TO BE REPRODUCED OR TRANSMITTED IN ANY FORM OR BY ANY MEANS, ELECTRONIC OR MECHANICAL, INCLUDING PHOTOCOPYING, RECORDING, OR BY ANY INFORMATION STORAGE AND RETRIEVAL SYSTEM, WITHOUT THE WRITTEN PERMISSION OF KIMLEY-HORN AND ASSOCIATES, INC.		THREE BAY FLOOR PLAN - SUPPLY - BUILDING B	
PROJECT # 18-28 THIS DOCUMENT IS THE PROPERTY OF KIMLEY-HORN AND ASSOCIATES, INC. AND IS NOT TO BE REPRODUCED OR TRANSMITTED IN ANY FORM OR BY ANY MEANS, ELECTRONIC OR MECHANICAL, INCLUDING PHOTOCOPYING, RECORDING, OR BY ANY INFORMATION STORAGE AND RETRIEVAL SYSTEM, WITHOUT THE WRITTEN PERMISSION OF KIMLEY-HORN AND ASSOCIATES, INC.		QUICK - TURNAROUND FACILITY PREPARED FOR TALLAHASSEE INTERNATIONAL AIRPORT CITY OF TALLAHASSEE FLORIDA	
PROJECT # 18-28 THIS DOCUMENT IS THE PROPERTY OF KIMLEY-HORN AND ASSOCIATES, INC. AND IS NOT TO BE REPRODUCED OR TRANSMITTED IN ANY FORM OR BY ANY MEANS, ELECTRONIC OR MECHANICAL, INCLUDING PHOTOCOPYING, RECORDING, OR BY ANY INFORMATION STORAGE AND RETRIEVAL SYSTEM, WITHOUT THE WRITTEN PERMISSION OF KIMLEY-HORN AND ASSOCIATES, INC.		SHEET NUMBER P103	

1 1/8" = 1'-0" SUPPLY FLOOR PLAN - BUILDING C



KEYNOTES

- 1 PROVIDE RPZ, CONNECT CWS TO WINDSHIELD WASHER FLUID SYSTEM, SEE SHEET QM701 FOR REFERENCE.
- 2 CONNECT 1" CWS TO HOSE REEL SYSTEM, SEE SHEET QM700 FOR REFERENCE.
- 3 PROVIDE RPZ, CONNECT 3" CWS TO RECLAIM WATER SYSTEM, SEE SHEET QC700 FOR REFERENCE.
- 4 SEE SHELF MOUNTED WATER HEATER DETAIL A/P502 FOR CONNECTIONS REQUIREMENTS.
- 5 PROVIDE RPZ AND 3/4" CONNECTION TO PRESSURE WASHING EQUIPMENT IN THIS VICINITY. REFER TO QC DRAWINGS. PROVIDE ISOLATION VALVE IN DROP.

TWO BAY FLOOR
PLAN - SUPPLY -
BUILDING C

QUICK - TURNAROUND
FACILITY
PREPARED FOR
TALLAHASSEE INTERNATIONAL
AIRPORT

CITY OF
TALLAHASSEE

FLORIDA

LICENSED PROFESSIONAL

Scott T. Craig Jr., P.E.

FL LICENSE NUMBER
#73938

PROJECT # 18-28
THIS DOCUMENT IS THE PROPERTY
OF KIMLEY-HORN AND ASSOCIATES, INC.
AND IS NOT TO BE REPRODUCED OR
TRANSMITTED IN ANY FORM OR BY
ANY MEANS, ELECTRONIC OR
MECHANICAL, INCLUDING
PHOTOCOPYING, RECORDING, OR
BY ANY INFORMATION
SYSTEMS WITHOUT THE
WRITTEN PERMISSION OF
KIMLEY-HORN AND ASSOCIATES, INC.

Florida Registry #2485



114 EAST 7th AVENUE
TALLAHASSEE, FL 32302
www.kimley-horn.com

Kimley-Horn

© 2020 KIMLEY-HORN AND ASSOCIATES, INC.
2815 CENTENNIAL BOULEVARD, SUITE 102
TALLAHASSEE, FL 32309
TALLAHASSEE, FL 32309
WWW.KIMLEY-HORN.COM CA 0000696

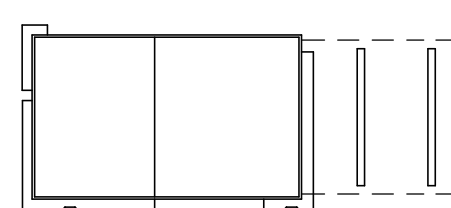
REVISIONS

No.

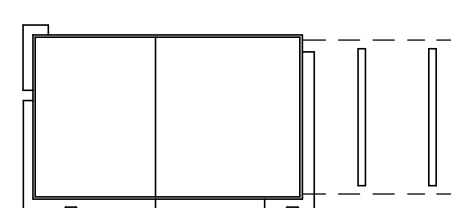
DATE

BY

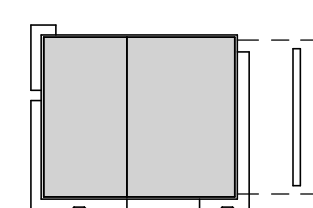
BUILDING A



BUILDING B



BUILDING C



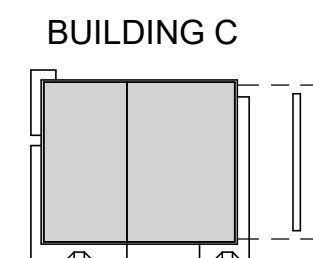
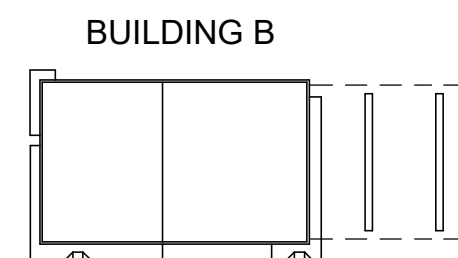
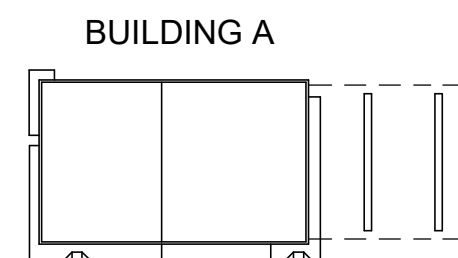
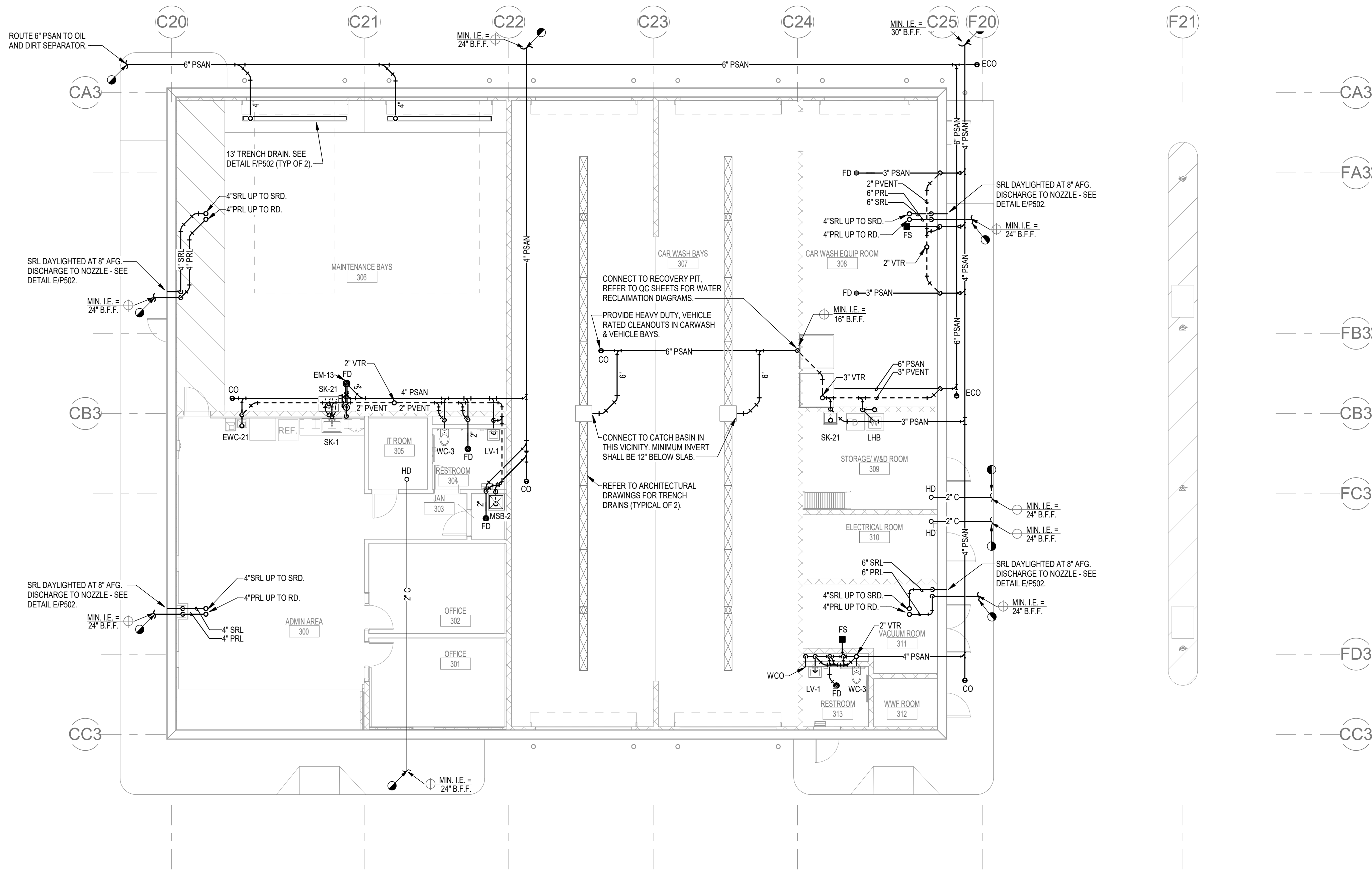
SITE KEY



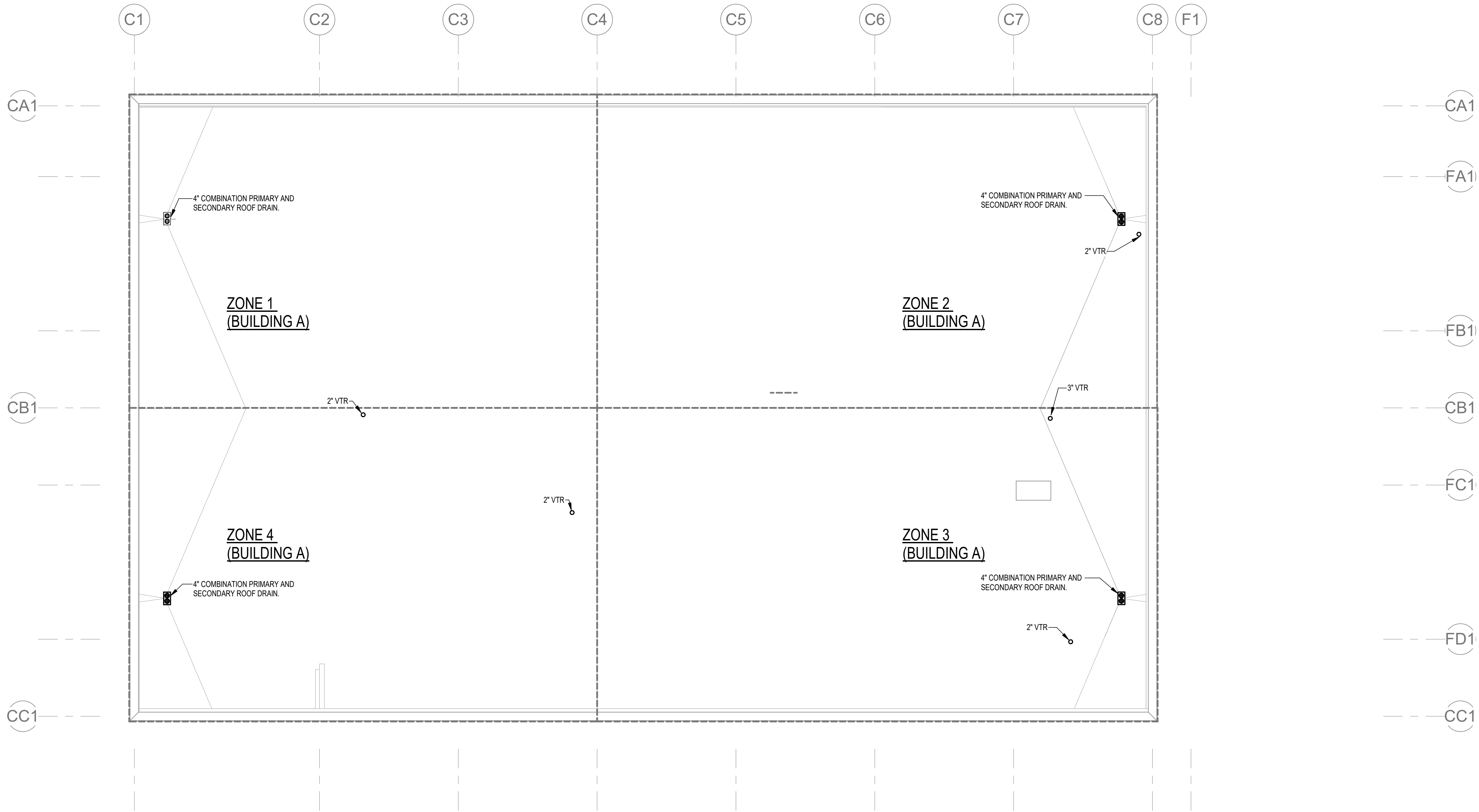
SHEET NUMBER

P105

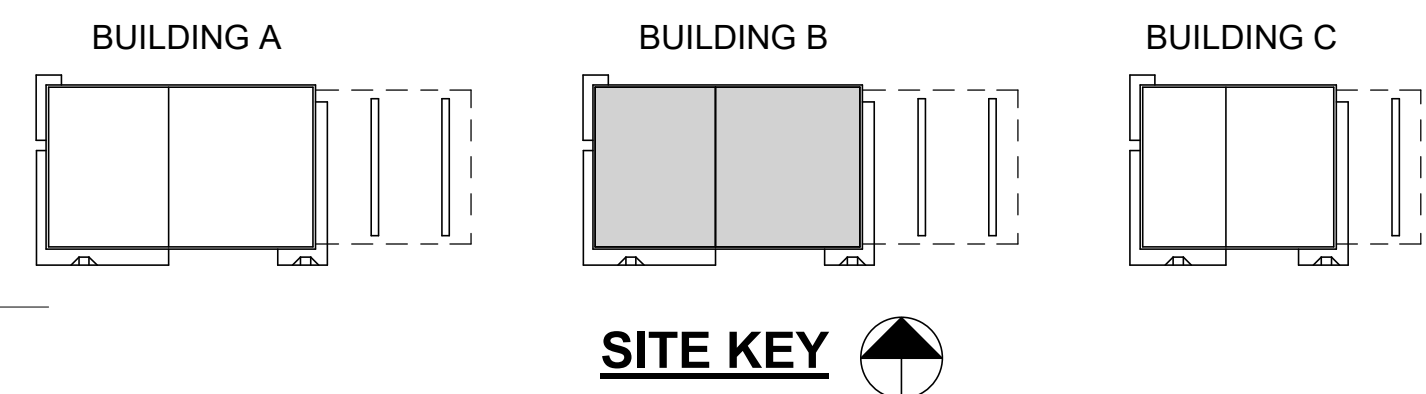
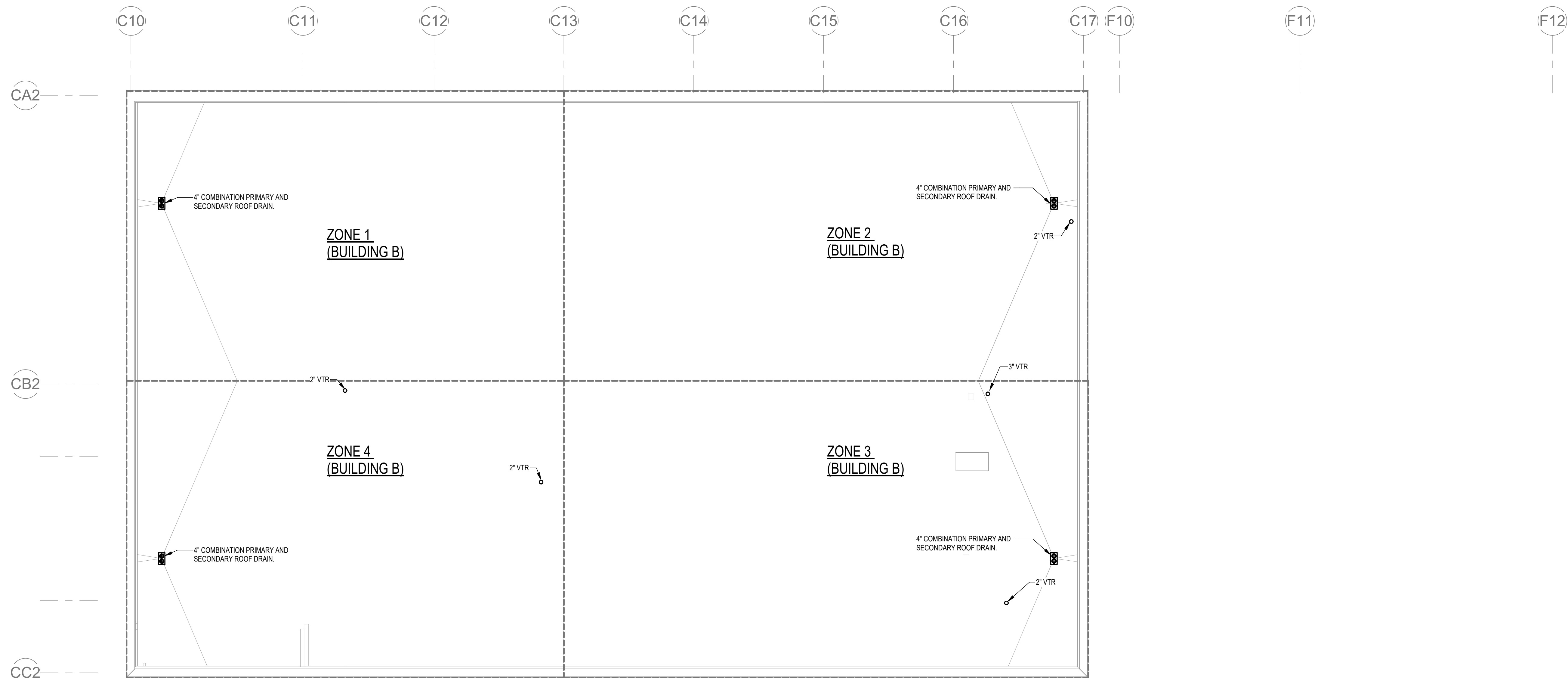
1 1/8" = 1'-0" WASTE & VENT FLOOR PLAN - BUILDING C



1 1/8" = 1'-0" PLUMBING ROOF PLAN - BUILDING A

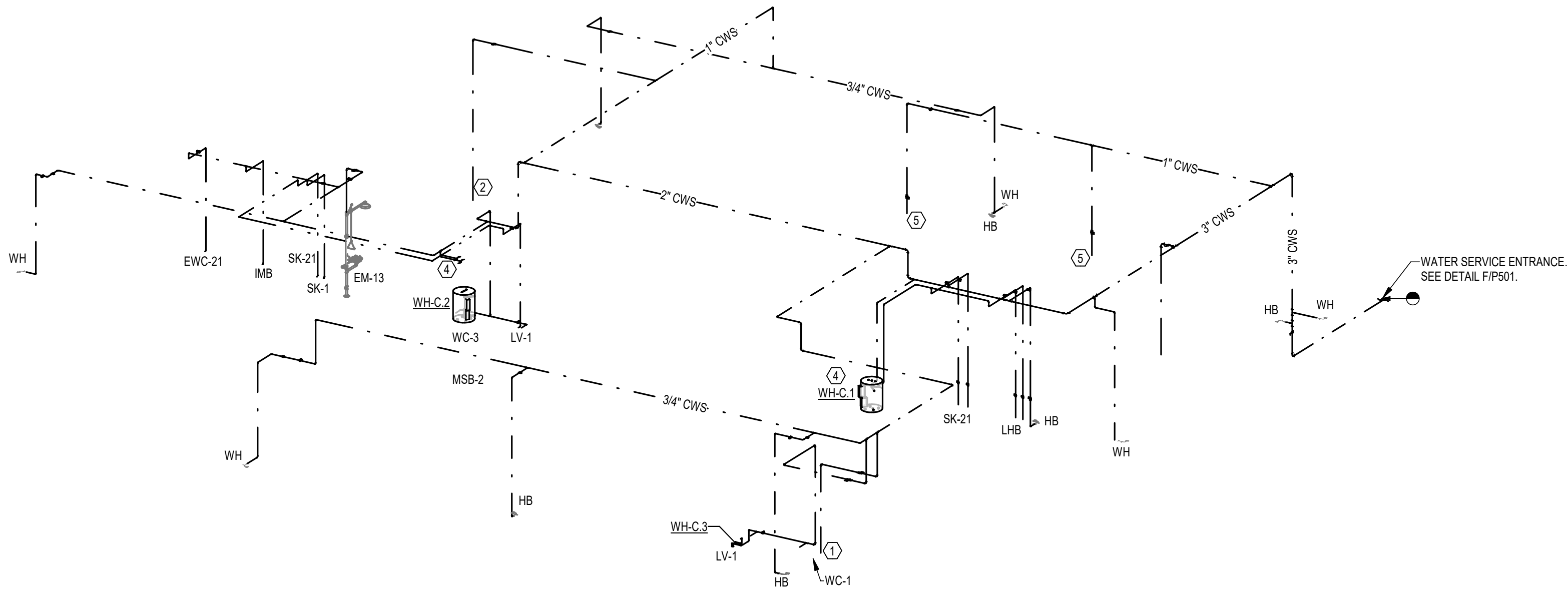


SHEET NUMBER P201	CITY OF TALLAHASSEE FLORIDA	QUICK - TURNAROUND FACILITY PREPARED FOR TALLAHASSEE INTERNATIONAL AIRPORT	THREE BAY ROOF PLAN - BUILDING A	PROJECT NUMBER 144124059	DATE 01/17/2025	DESIGNED BY RDR	DRAWN BY JLR	CHECKED BY STC	LICENSED PROFESSIONAL Scott T. Craig Jr., P.E. FL LICENSE NUMBER #73938	 H2 ENGINEERING 114 EAST 7th AVENUE TALLAHASSEE, FL 32302 www.h2engineering.com	Florida Registry #2485	PROJECT # 15-28 THIS DOCUMENT IS THE PROPERTY OF KIMLEY-HORN AND ASSOCIATES, INC. AND IS NOT TO BE REPRODUCED OR TRANSMITTED IN ANY FORM OR BY ANY MEANS, ELECTRONIC OR MECHANICAL, INCLUDING PHOTOCOPYING, RECORDING, OR BY ANY INFORMATION SYSTEMS WITHOUT THE WRITTEN PERMISSION OF KIMLEY-HORN AND ASSOCIATES, INC. © 2020 KIMLEY-HORN AND ASSOCIATES, INC. 2815 CENTENNIAL BOULEVARD, SUITE 102 TALLAHASSEE, FL 32309 WWW.KIMLEY-HORN.COM CA 0000696	Kimley»Horn	No.	REVISIONS	DATE	BY

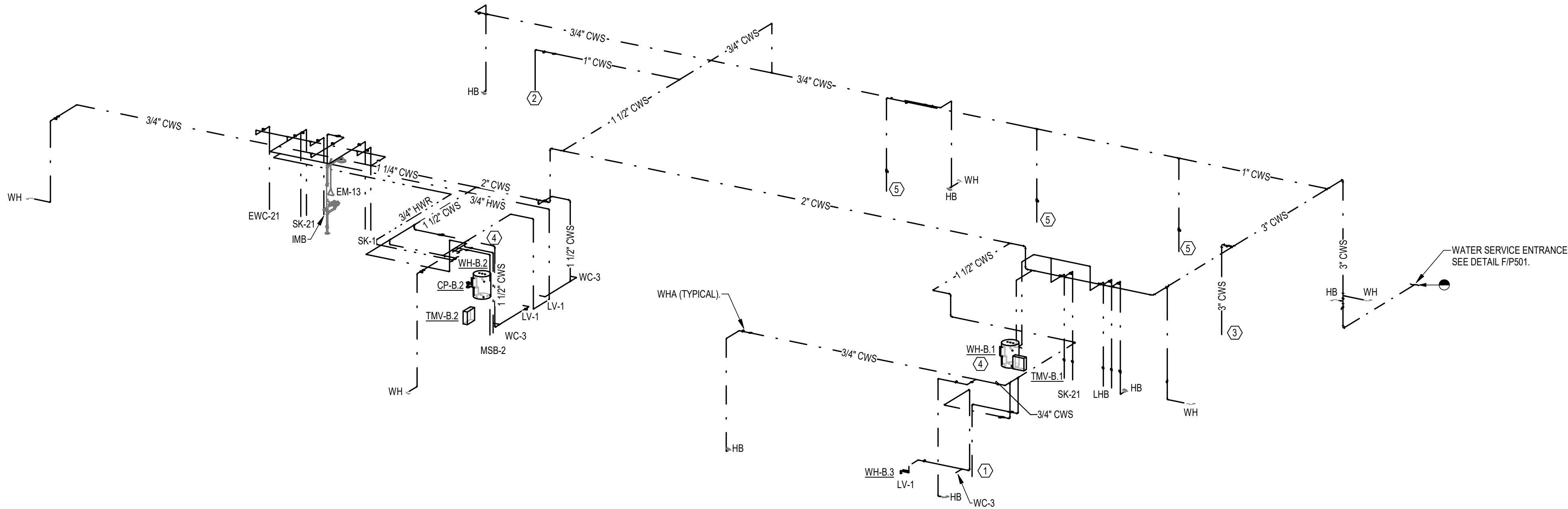


SHEET NUMBER	CITY OF TALLAHASSEE	QUICK - TURNAROUND FACILITY PREPARED FOR TALLAHASSEE INTERNATIONAL AIRPORT	FLORIDA
P202		THREE BAY ROOF PLAN - BUILDING B	
PROJECT NUMBER 144124059	LICENSED PROFESSIONAL	DATE 01/17/2025	SCOTT T. CRAIG JR., P.E.
		1/8" = 1'-0"	FL LICENSE NUMBER #73938
DESIGNED BY RDR		DRAWN BY JLR	
CHECKED BY STC			
		 <p>Kimley»Horn © 2020 KIMLEY-HORN AND ASSOCIATES, INC. 2815 CENTENNIAL BOULEVARD SUITE 102 TALLAHASSEE, FLORIDA 32310-3600 WWW.KIMLEY-HORN.COM CA 00000595</p>	
No.	Revisions	Date	By

1 PLUMBING SUPPLY RISER - BUILDINGS C



2 PLUMBING SUPPLY RISER - BUILDING A & B



KEYNOTES

- 1 PROVIDE RPZ. CONNECT CWS TO WINDSHIELD WASHER FLUID SYSTEM, SEE SHEET QM701 FOR REFERENCE.
- 2 CONNECT 1" CWS TO HOSE REEL SYSTEM, SEE SHEET QM700 FOR REFERENCE.
- 3 PROVIDE RPZ. CONNECT 3" CWS TO RECLAIM WATER SYSTEM, SEE SHEET OC700 FOR REFERENCE.
- 4 SEE SHELF MOUNTED WATER HEATER DETAIL A/P502 FOR CONNECTIONS REQUIREMENTS.
- 5 PROVIDE RPZ AND 3/4" CONNECTION TO PRESSURE WASHING EQUIPMENT IN THIS VICINITY. REFER TO GC DRAWINGS. PROVIDE ISOLATION VALVE IN DROP.

QUICK - TURNAROUND
FACILITY
PREPARED FOR
TALLAHASSEE INTERNATIONAL
AIRPORT

CITY OF
TALLAHASSEE

FLORIDA

RISER DIAGRAMS

PROJECT NUMBER	144124059
DATE	01/17/2025
DESIGNED BY	RDR
DRAWN BY	SPD
CHECKED BY	STC

LICENSED PROFESSIONAL

Scott T. Craig Jr., P.E.

FL LICENSE NUMBER
#73938



114 EAST 7th AVENUE
TALLAHASSEE, FL 32302
www.h2engineering.com

PROJECT # 15-25
THIS DOCUMENT IS THE PROPERTY
OF H2 ENGINEERING. IT IS TO BE
USED FOR THE PROJECT AND NOT
FOR ANY OTHER PROJECT. NO
REUSE OR REPRODUCTION IS
ALLOWED WITHOUT THE
APPROPRIATE PERMISSION.

Florida Registry #2485

Kimley»Horn

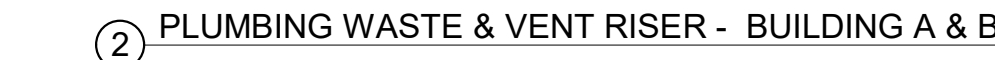
2815 CENTENNIAL BOULEVARD, SUITE 102
TALLAHASSEE, FL 32308
PHONE: 850-553-3500
WWW.KIMLEY-HORN.COM

REVISIONS

No.

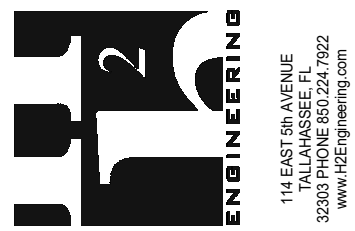
DATE

BY



RISER DIAGRAMS

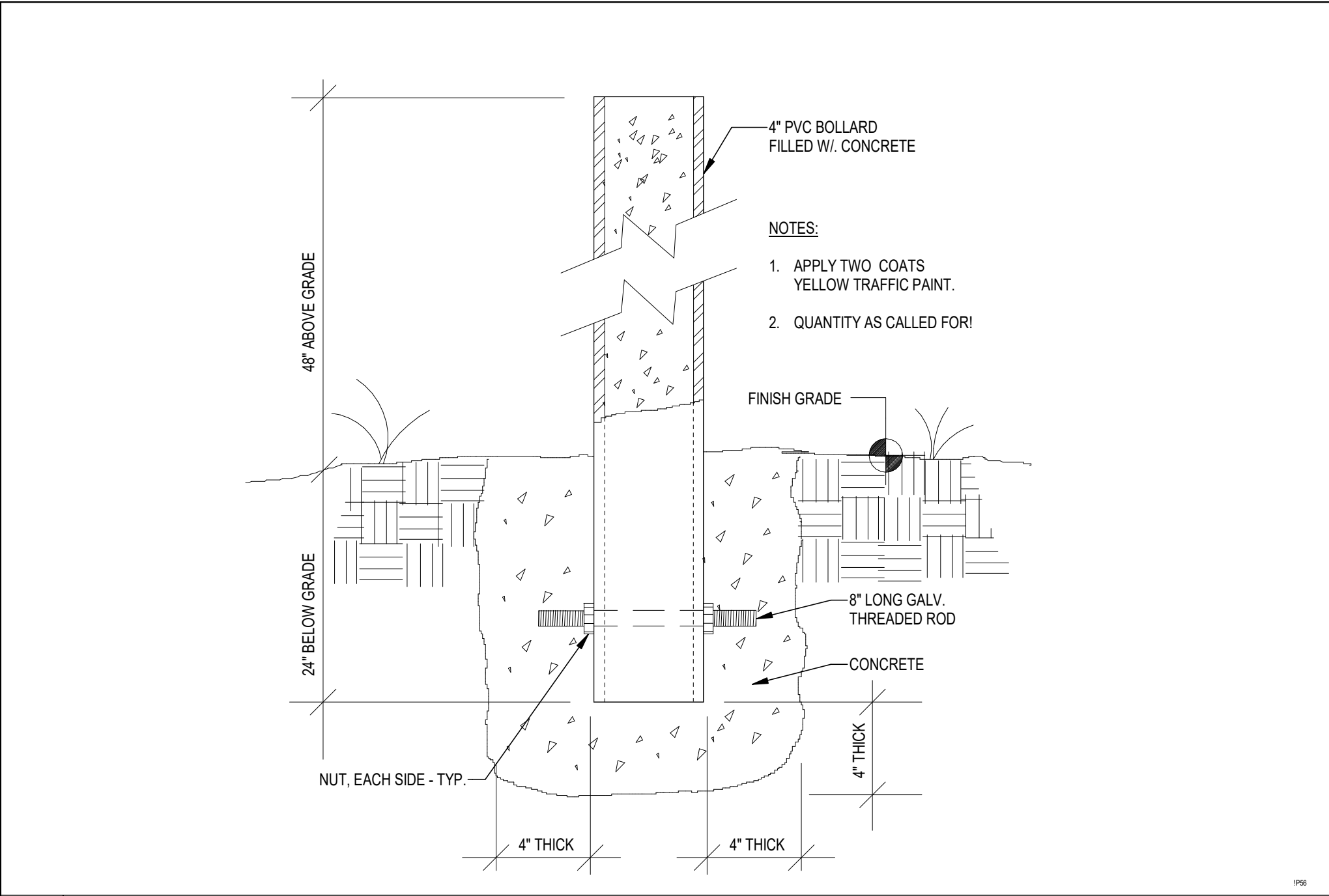
PROJECT NUMBER 144124059	LICENSED PROFESSIONAL		
DATE 01/17/2025	Scott T. Craig Jr., P.E.		
DESIGNED BY RDR	FL LICENSE NUMBER #73938		
DRAWN BY SPD			
CHECKED BY STC			



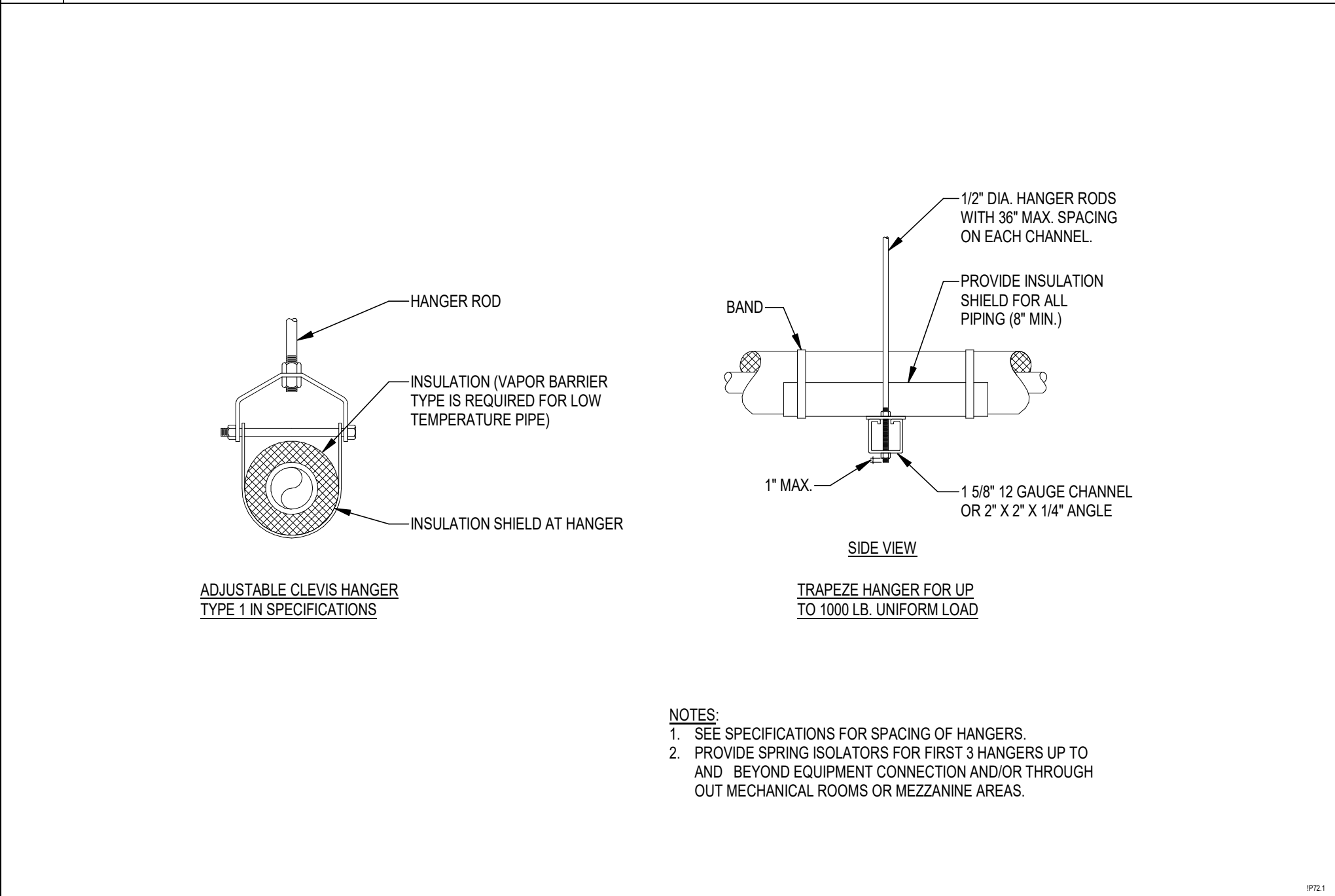
Florida Registry #2485

Kimley»Horn
2615 CENTENNIAL BOULEVARD, SUITE 102
TALLAHASSEE, FL 32308
PHONE: 850-553-3500
WWW.KIMLEY-HORN.COM

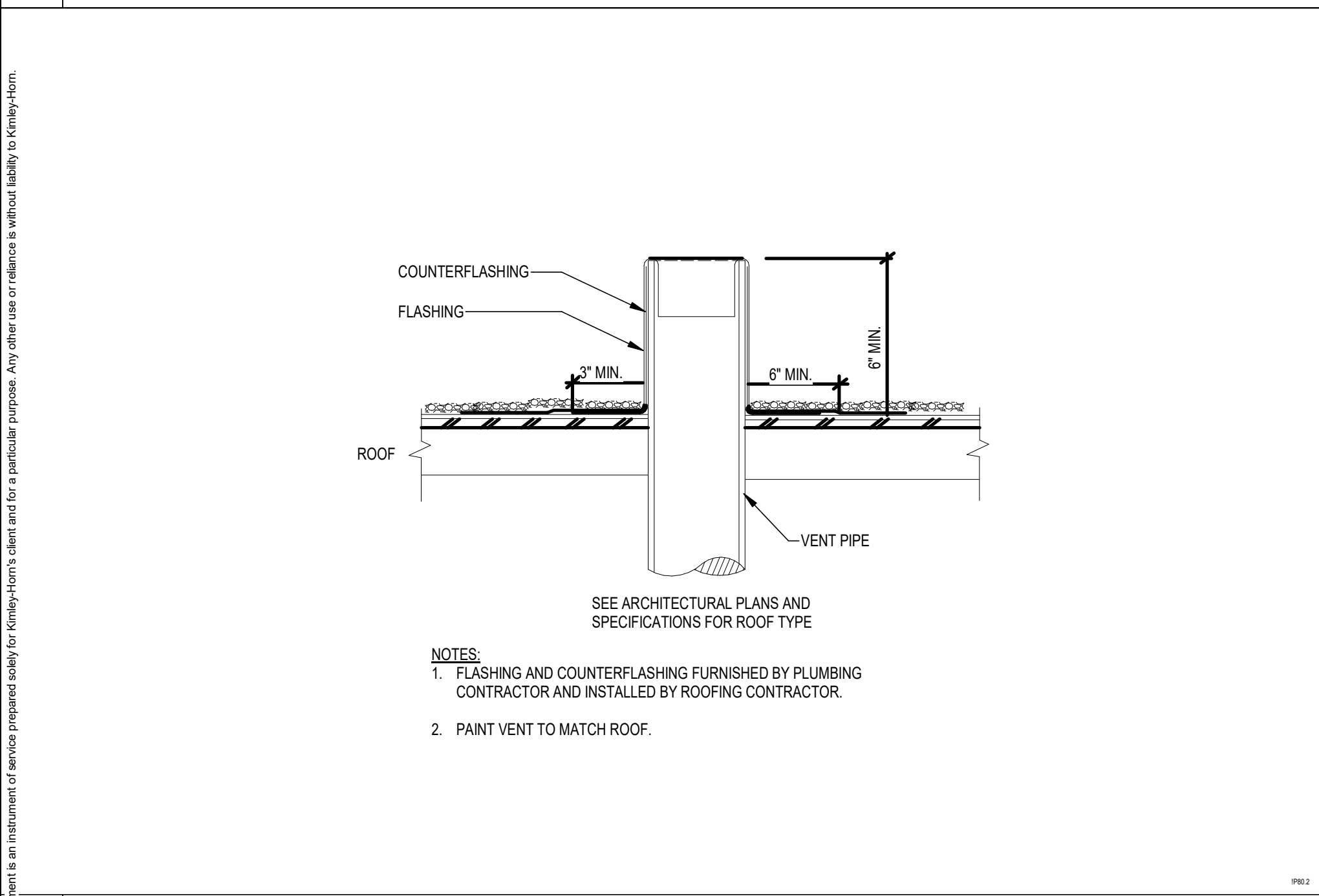
[illegible]



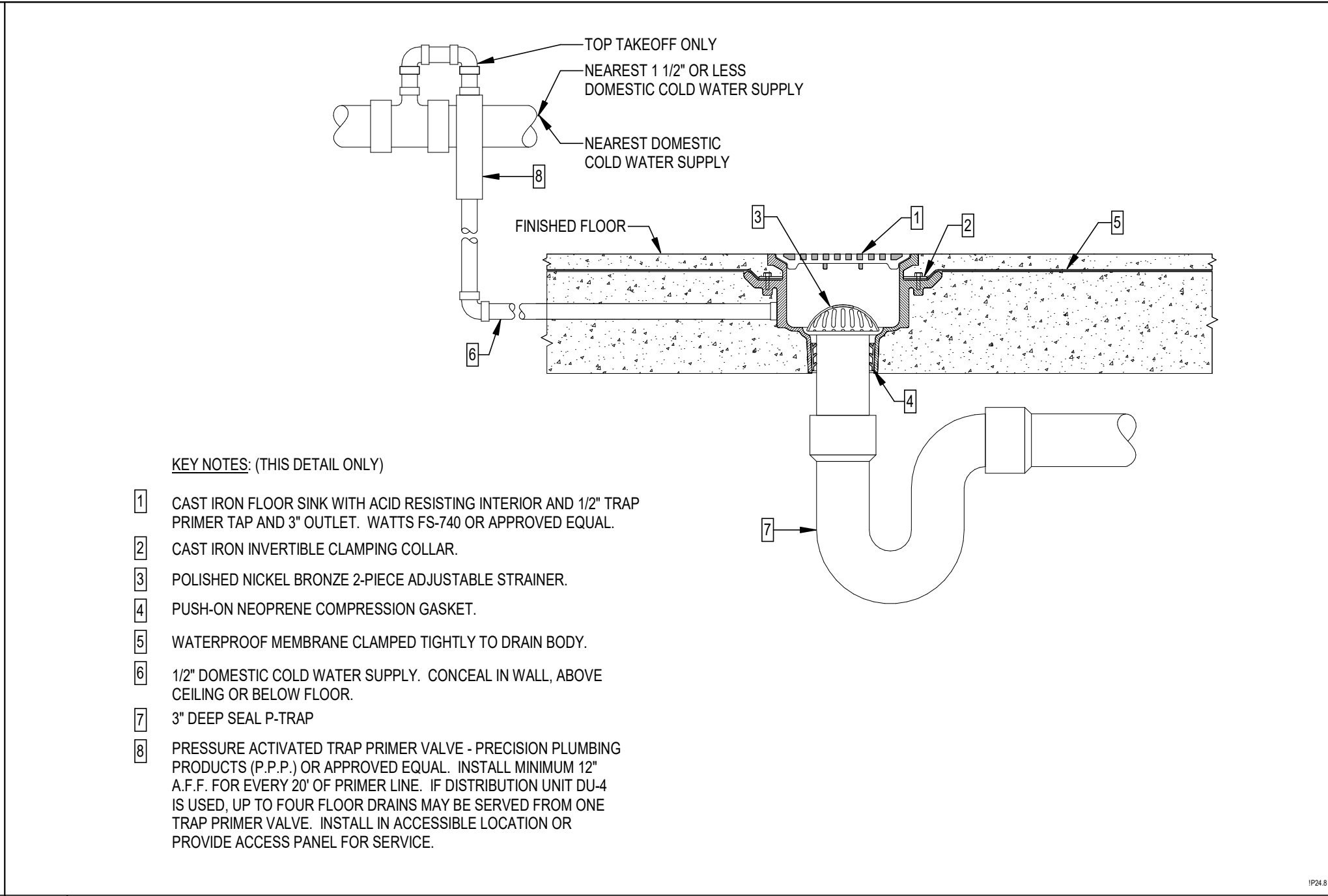
G PROTECTIVE BOLLARD



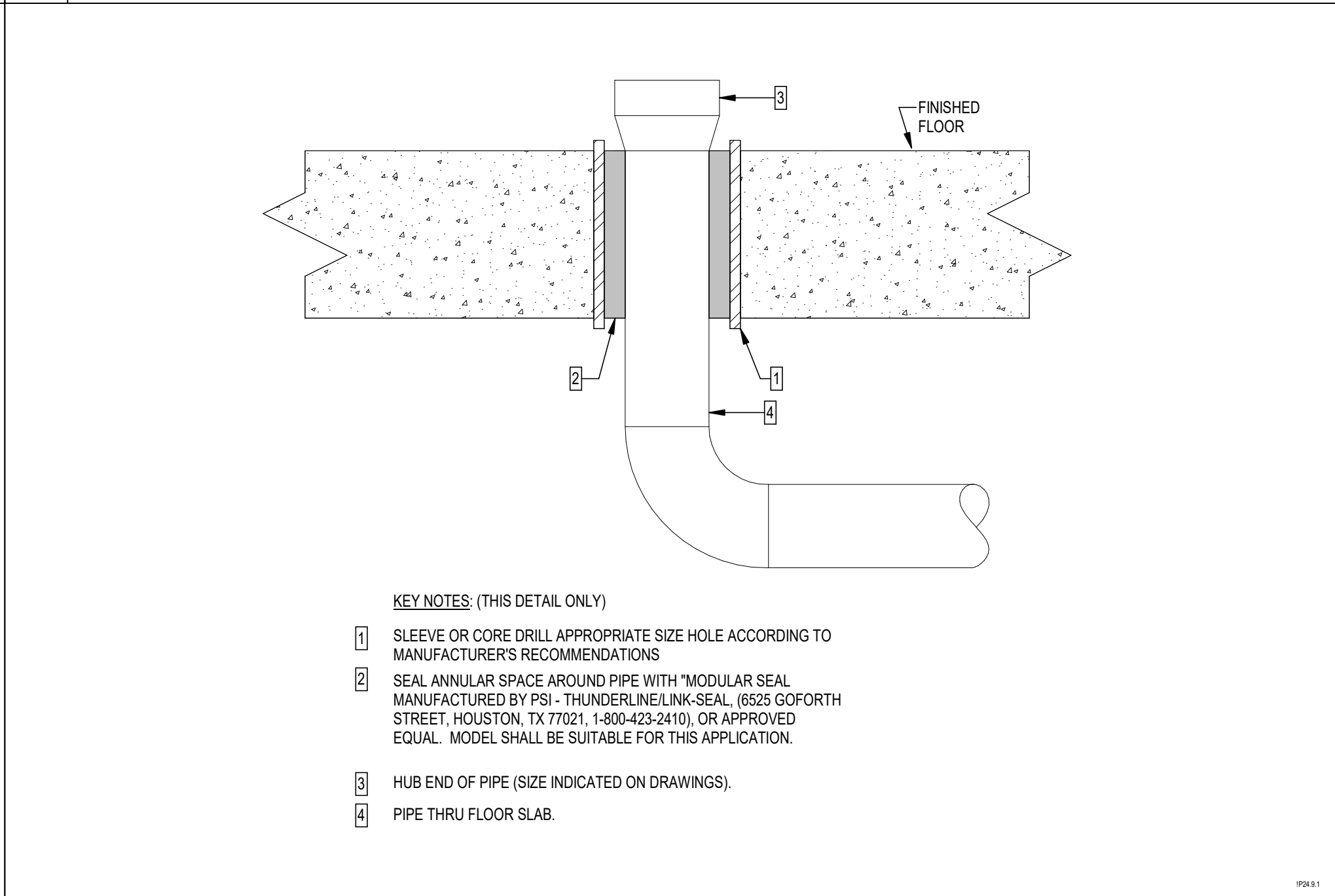
H TYPICAL PIPE HANGERS



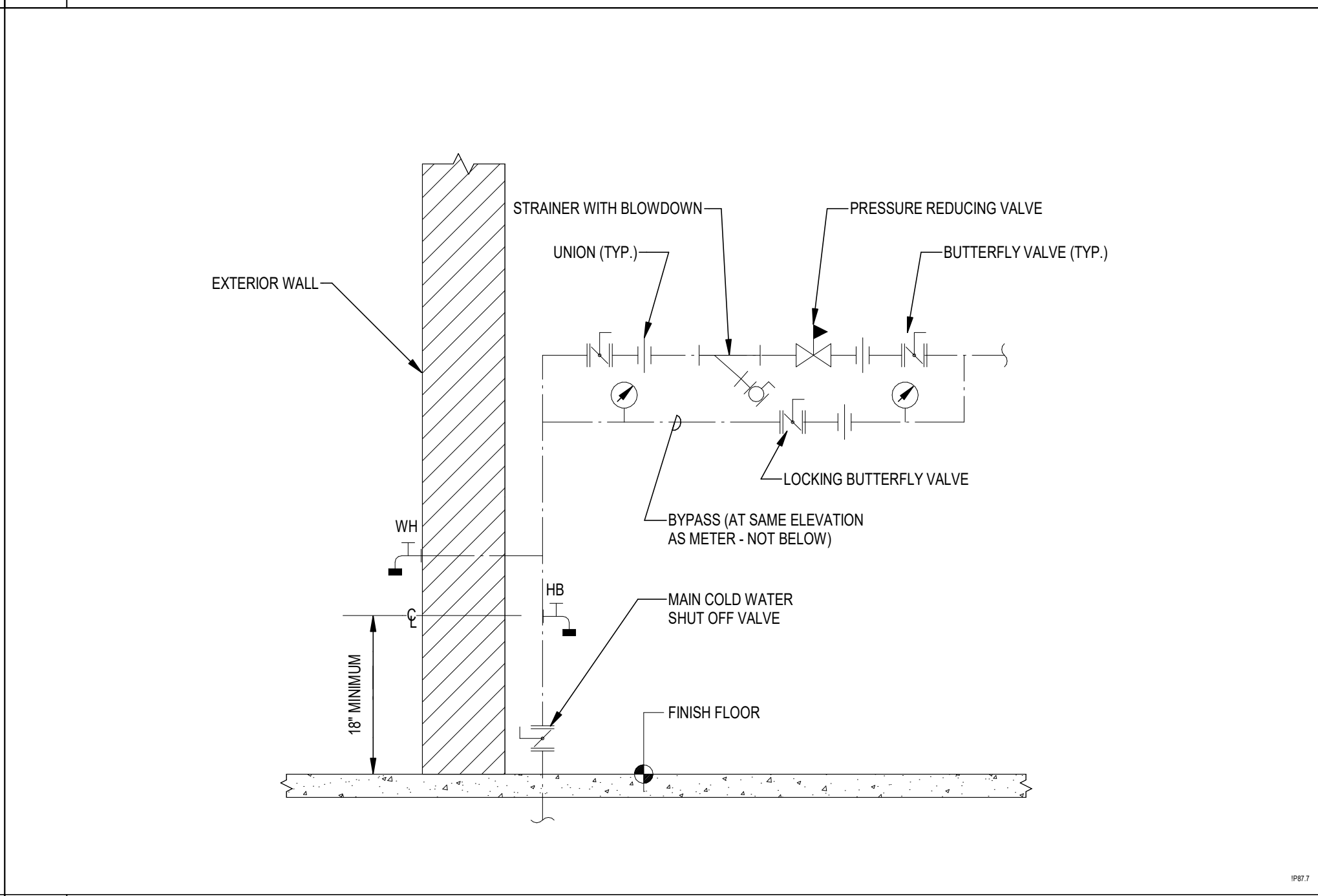
J VENT THRU ROOF



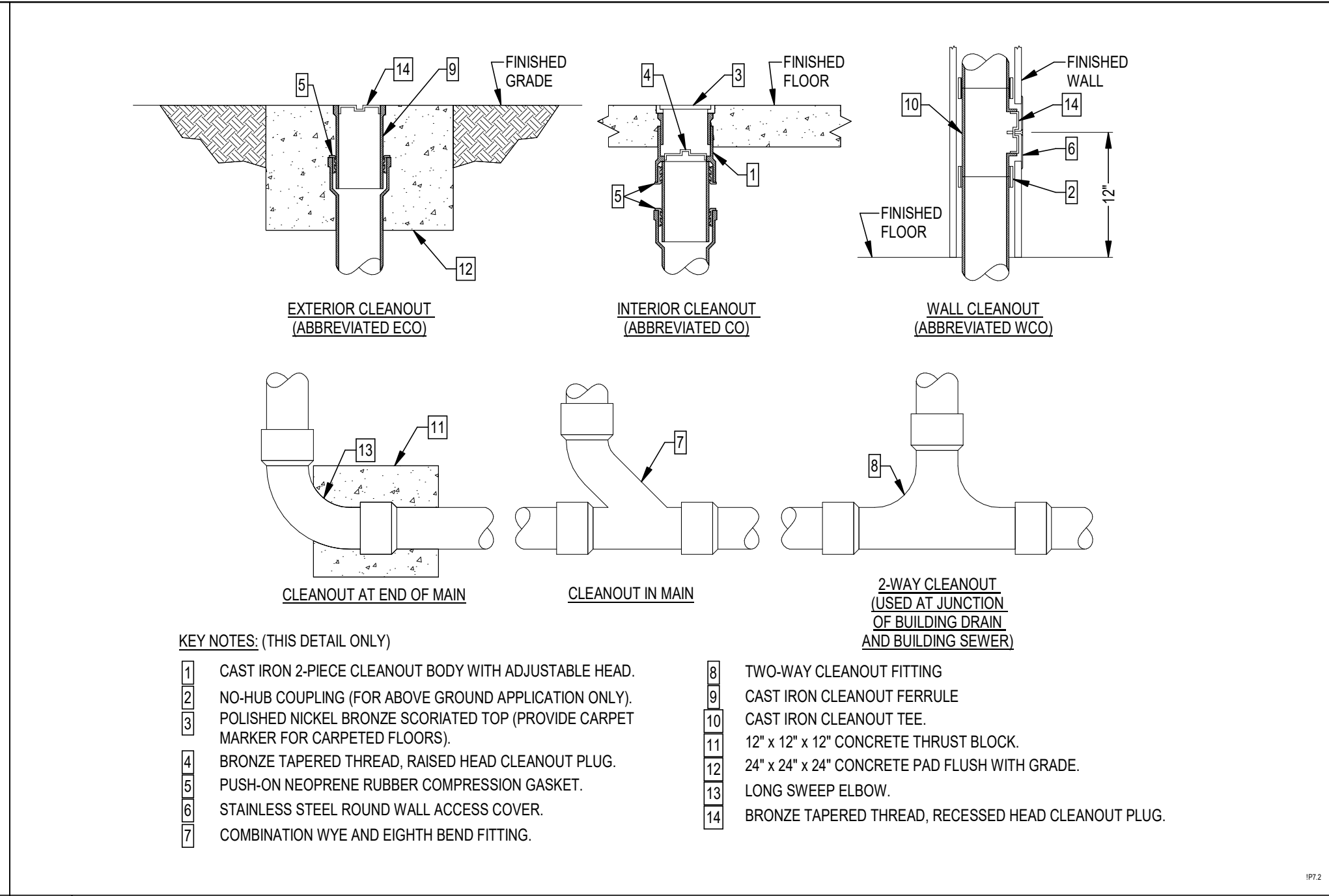
D FLOOR SINK



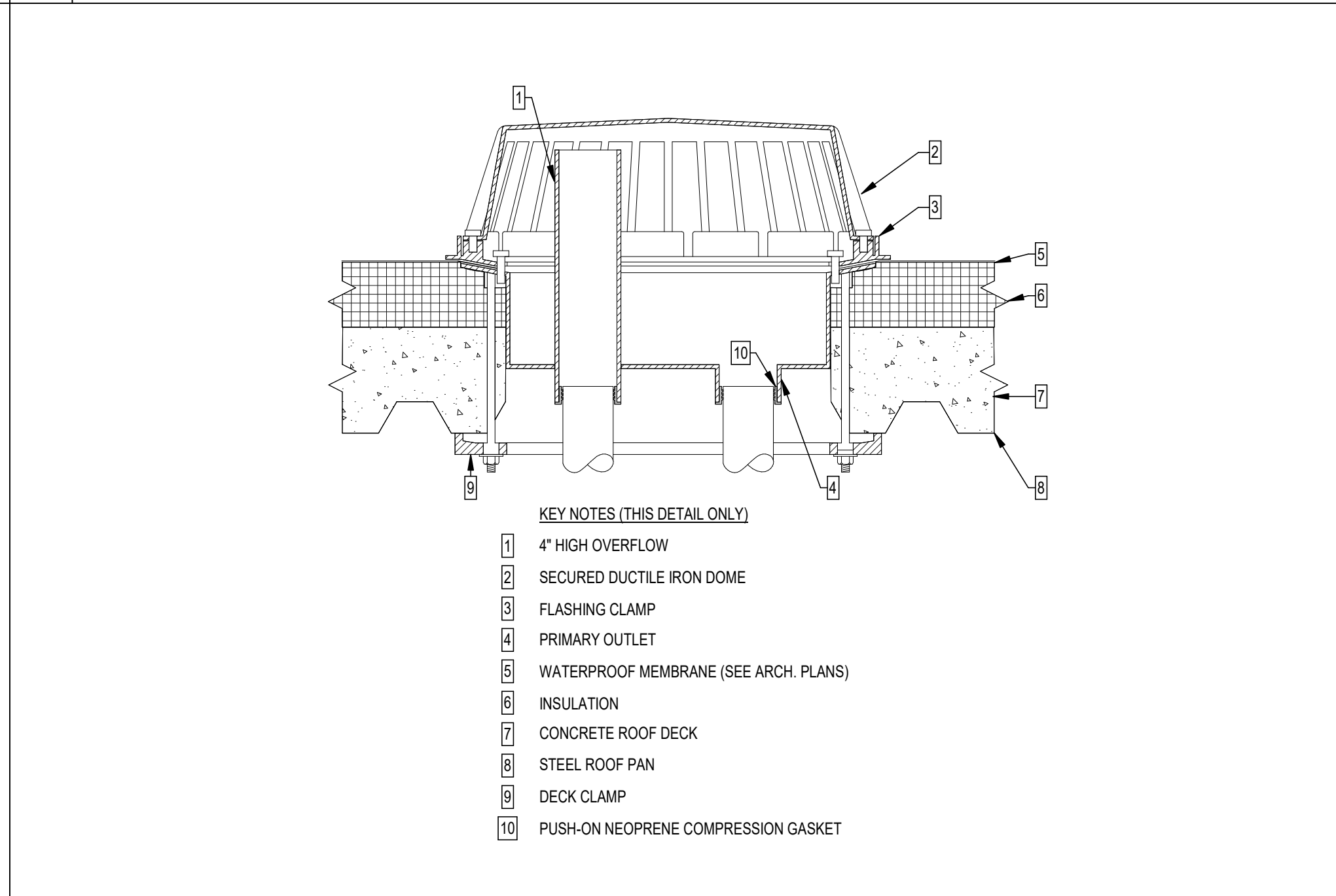
E HUB DRAIN



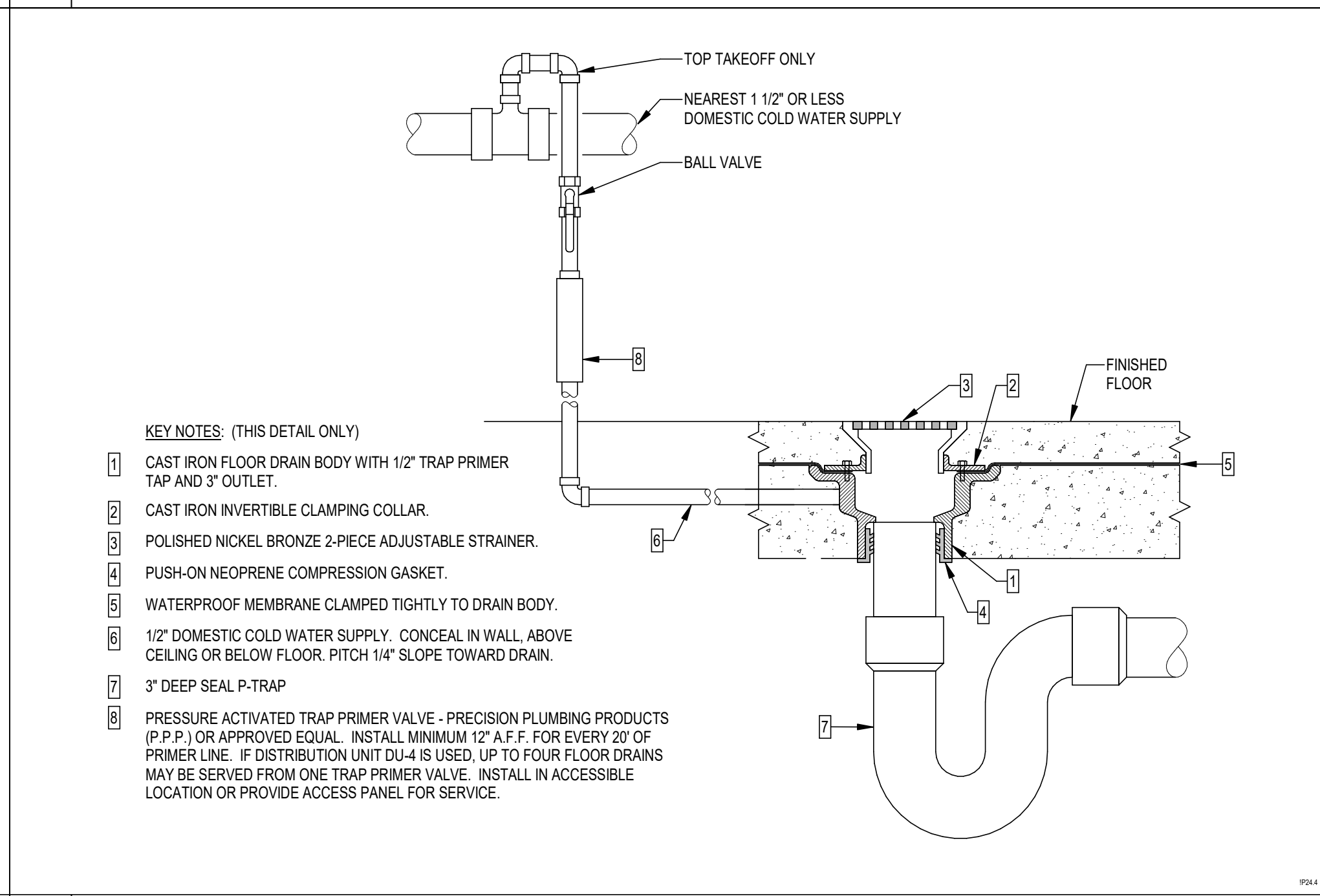
F WATER SERVICE ENTRANCE



A CLEANOUTS



B COMBINATION ROOF DRAIN DETAIL



C FLOOR DRAIN

REVISIONS		DATE	BY
No.			

Kimley»Horn
2615 CENTENNIAL BOULEVARD, SUITE 102
TALLAHASSEE, FL 32308
PHONE: 850-553-3500
WWW.KIMLEY-HORN.COM

PROJECT # 18-28
THIS DOCUMENT IS THE PROPERTY OF KIMLEY-HORN, INC. AND IS NOT TO BE REPRODUCED OR TRANSMITTED IN ANY FORM OR BY ANY MEANS, ELECTRONIC OR MECHANICAL, INCLUDING PHOTOCOPYING, RECORDING, OR BY ANY INFORMATION STORAGE AND RETRIEVAL SYSTEM, WITHOUT THE WRITTEN PERMISSION OF KIMLEY-HORN, INC.
Florida Registry #248

ENGINEERING
14 EAST 9th AVENUE
TALLAHASSEE, FL 32302
www.kimley-horn.com

PROJECT NUMBER	144124059	LICENSED PROFESSIONAL
DATE	01/17/2025	
DESIGNED BY	RDR	
DRAWN BY	SFD	
CHECKED BY	STC	

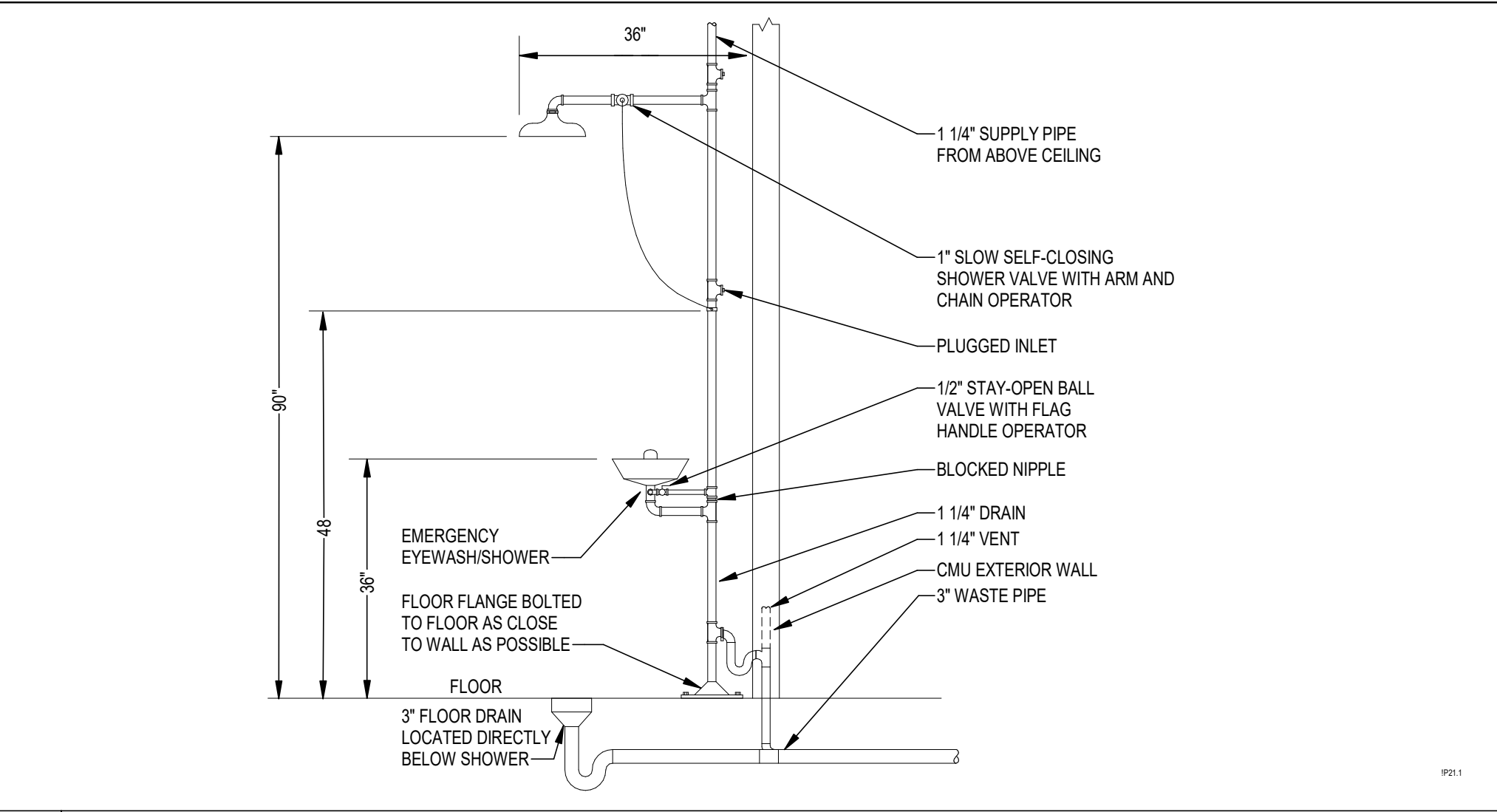
Scott T. Craig Jr., P.E.
FL LICENSE NUMBER #73938

DETAILS

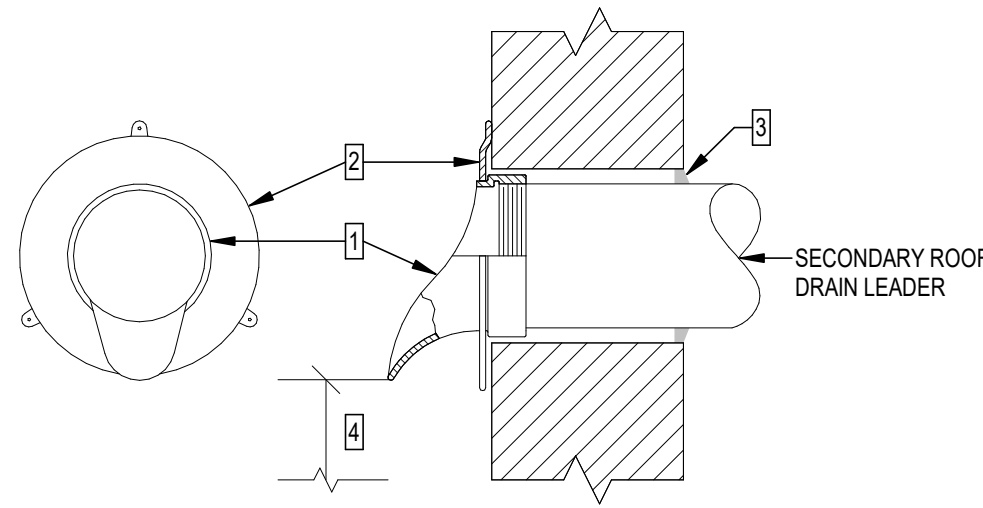
QUICK - TURNAROUND FACILITY
PREPARED FOR
TALLAHASSEE INTERNATIONAL AIRPORT

CITY OF TALLAHASSEE
FLORIDA

SHEET NUMBER
P501



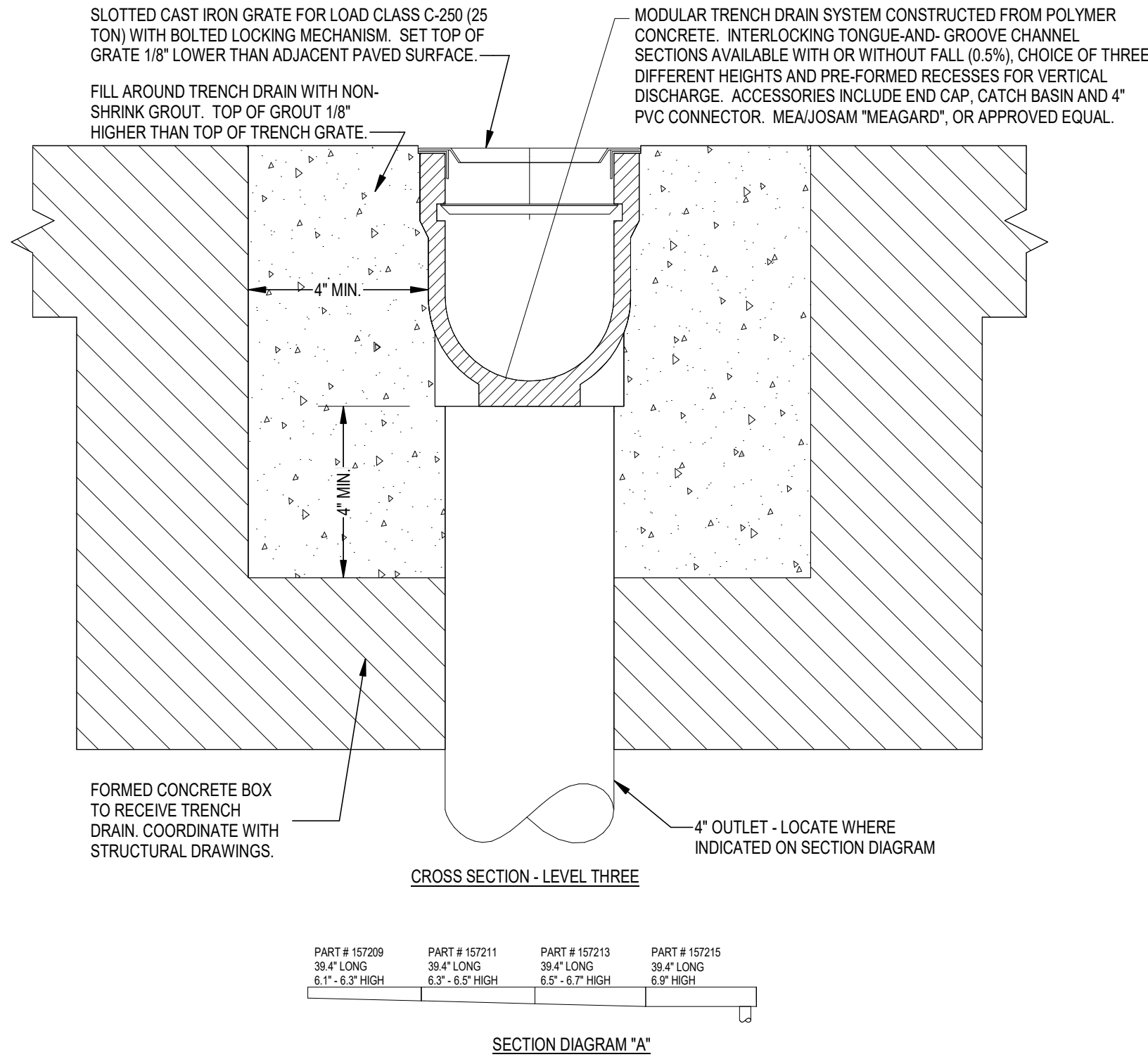
D EMERGENCY EYEWASH/SHOWER



KEY NOTES: (THIS DETAIL ONLY)

1. DOWNSPOUT NOZZLE WITH CAST BRONZE BODY AND WALL FLANGE, NPT THREADS, J.R. SMITH FIGURE 1770T, OR APPROVED EQUAL.
2. WALL FLANGE SECURED TO WALL WITH STAINLESS STEEL ANCHOR BOLTS AND EXPANSION SLEEVES.
3. SEAL AROUND PIPE AT WALL PENETRATION.
4. DISCHARGE MINIMUM 12" ABOVE EXTERIOR GRADE.

E DOWNSPOUT NOZZLE

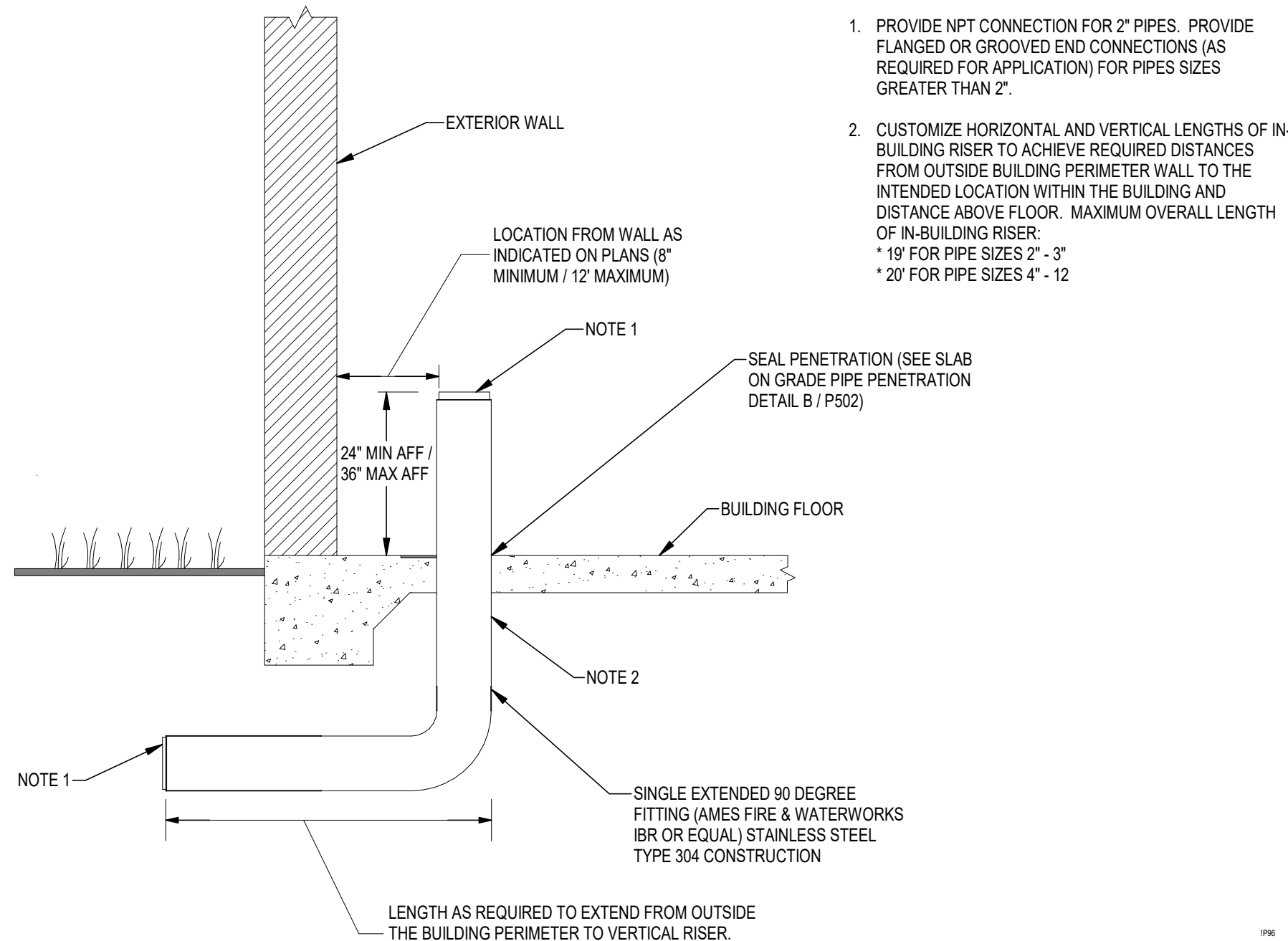


NOTE:

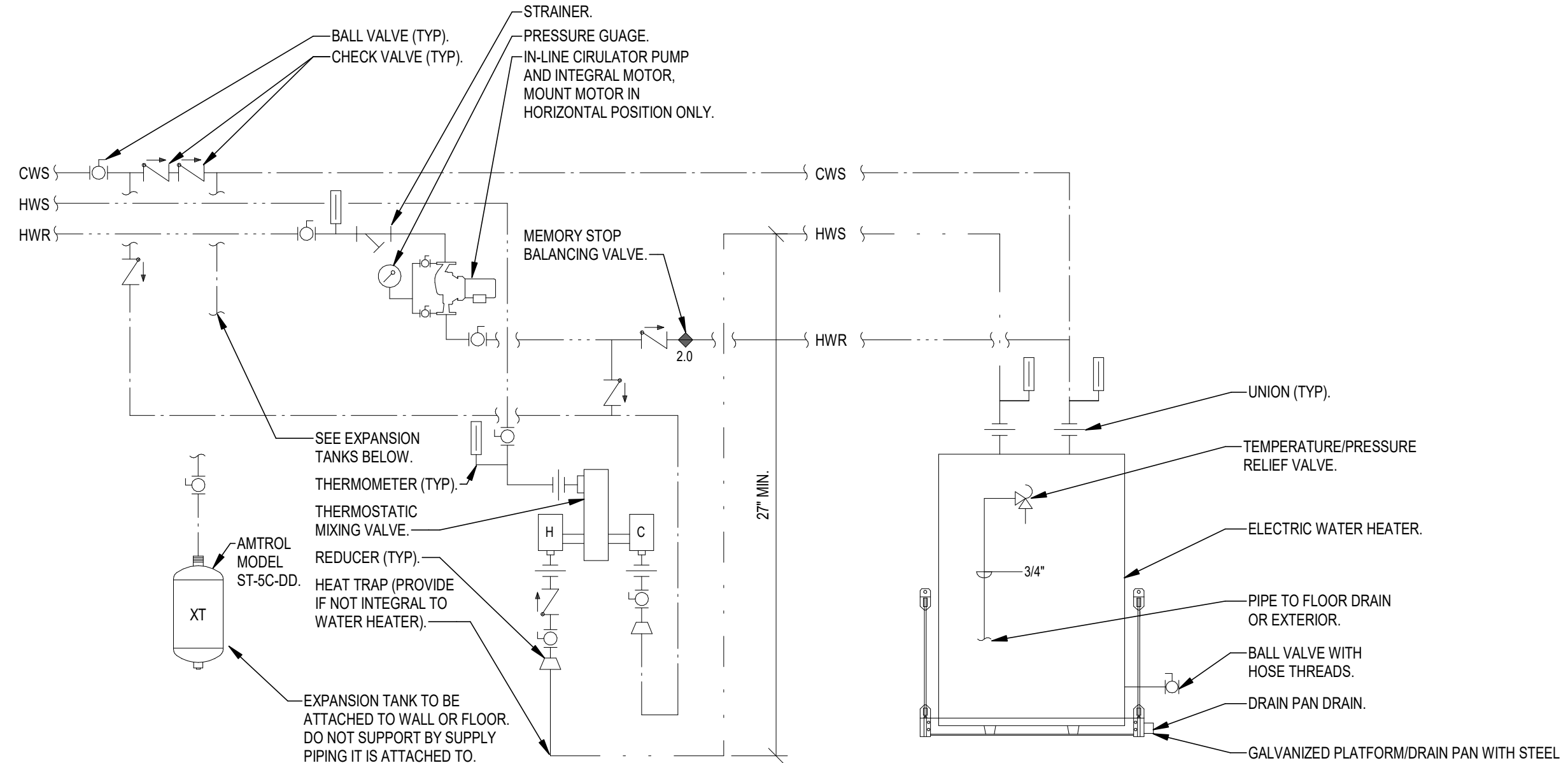
1. CONTRACTOR SHALL FURNISH APPROVED SHOP DRAWINGS AND COMPLETE INSTALLATION INSTRUCTIONS TO ENGINEER FOR APPROVAL BEFORE ORDERING ANY MATERIALS.
2. PART NUMBERS PER JOSAM MEADRAIN SUPREME, MODEL EN1000 OR APPROVED EQUAL.

F TRENCH DRAIN

A DOMESTIC HOT WATER SYSTEM



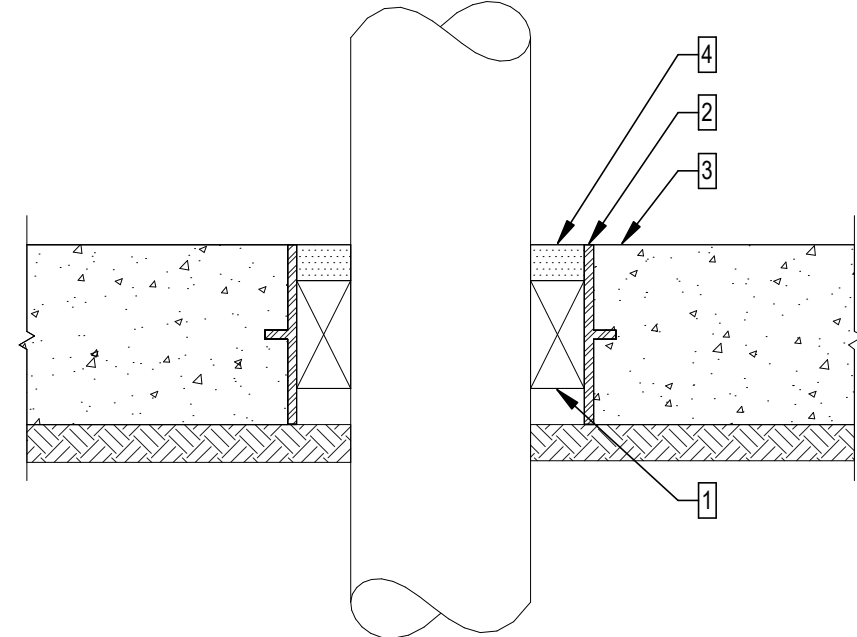
C SINGLE PIECE IN-BUILDING RISER



NOTES:

1. SEE FLOOR PLANS FOR PIPE SIZES.
2. COLD AND HOT WATER PIPE SIZES TO TMV SHALL BE SAME SIZE AS COLD WATER PIPE SIZE TO WATER HEATER.
3. PROVIDE 3-POLE CONTACTOR IN POWER SUPPLY TO SHUT OFF POWER BY MEANS OF AQUASTAT.
4. PROVIDE HEAT TRAPS ON COLD WATER INLET AND HOT WATER OUTLET OF WATER HEATER.
5. PIPE T&P RELIEF VALVE FULL SIZE TO FLOOR DRAIN.
6. PIPE DRAIN VALVE FULL SIZE TO FLOOR DRAIN OR EXTERIOR.

SHELF MOUNTED ELECTRIC WATER HEATER



KEY NOTES: (THIS DETAIL ONLY)

1. SEAL ANNUAL SPACE AROUND PIPE WITH MODULAR SLEEVE SEAL SYSTEM, MODEL SHALL BE SUITABLE FOR THIS APPLICATION.
2. SLEEVE OR CORE DRILL APPROPRIATE SIZE HOLE ACCORDING TO MANUFACTURER'S RECOMMENDATIONS.
3. FLOOR SLAB ON GRADE.
4. COMPLETELY FILL SPACE WITH SEALANT SUITABLE FOR THIS APPLICATION.

B SLAB ON GRADE PIPE PENETRATION

NO.	REVISIONS	DATE	BY

Kimley»Horn
2815 CENTENNIAL BOULEVARD, SUITE 102
TALLAHASSEE, FL 32308
PHONE: 850-553-3500
WWW.KIMLEY-HORN.COM

PROJECT # 15-25
THIS DOCUMENT IS THE PROPERTY
OF KIMLEY-HORN AND IS NOT TO BE
REPRODUCED OR TRANSMITTED IN
ANY FORM OR BY ANY MEANS, ELECTRONIC
OR MECHANICAL, INCLUDING PHOTOCOPYING,
RECORDING, OR BY ANY INFORMATION
SYSTEMS WITHOUT PERMISSION IN
WRITING FROM KIMLEY-HORN.
Florida Registry #248

Kimley-Horn
ENGINEERING
141 EAST 7th AVENUE
TALLAHASSEE, FL 32302
www.kh-engineering.com

LICENSED PROFESSIONAL
Scott T. Craig Jr., P.E.
FL LICENSE NUMBER
#73938

PROJECT NUMBER	DATE	DESIGNED BY	DRAWN BY	CHECKED BY
144124059	01/17/2025	18" = 1'-0"	RDR	SPD

DETAILS

**QUICK - TURNAROUND
FACILITY
PREPARED FOR
TALLAHASSEE INTERNATIONAL
AIRPORT**
CITY OF
TALLAHASSEE
FLORIDA

SHEET NUMBER
P502