

SYMBOL LEGEND

ABBREVIATIONS					
#	AT	FDN	FOUNDATION	OC	ON CENTER(S)
ACT	ACCTICAL TILE	FE	FIRE EXTINGUISHER	OCO	OUTSIDE CANTER
AD	AREAL DRAIN	FEC	FIRE EXTINGUISHER CABINET	OFD	OWNER FINISHED
AE	ARCHITECT-ENGINEER	FF	FINISHED FLOOR	QCN	CONTRACTOR INSTALLED
AFR	ABOVE FINISHED FLOOR	FIN	FIRE EXTING. CABINET	QFO	OWNER FINISHED
AHU	AIR HANDLING UNIT	FINI	FINISHED	QFONI	OWNER FINISHED
APPROX	APPROXIMATE	FL	FLOOR	QFONI	OWNER FINISHED
ARCH	ARCHITECTURAL	FO	FOOTING	QFON	CONTRACTOR ROUGH N
BD	BOARD	FOF	FACE OF FOOTING	QOH	OVERHEAD
BS	BT/PT BOARD	FT	FOOTPRINT	OPH	OPPOSITE HAND
BUL	BUILDING	FTG	FOOTING	OPP	OPPOSITE
BULK	BLOCKING	GA	GAGE/GAUGE	PL	PLATE
BURG	BLOCKING	GA/GV	GALVANIZED	PLM	PLASTIC LAMINATE
BUR	BURIAL	GB	GLASS/GLAZING	PLR	PLASTER
BT	BOTTOM	GWB	Gypsum WALL BOARD	PT	PRESSURE TREATED
BSK	BEARING	GYP	GYPSPUM	QT	QUARTZ TILE
BRK	BRICK	HAC	HATCH/CAP ACCESSIBLE	R	RISER/RUN
BR	BUILT UP ROOFING	HDW	HARDWARE	RD	ROOM DRAIN
CEN	CENTRAL PLASTER	HW	HOLLOW METAL	REB	RECESSED
CH	CONTRACTOR FURNISHED	JR	JUNCTION	REB	RECESSED
CHM	CONTRACTOR INSTALLED	HYC	HIGH/THIGH	REB	RECESSED
CHT	CHIMNEY	HT	HEATING, VENTILATING, AIR CONDITIONING	REB	RECESSED
CHU	CONTROL UNIT	IND	INDUSTRIAL	REB	RECESSED
CL	CEILING	INT	INTERIOR	REV	REVISION(S)
CLG	CENTRAL LINE	INS	INSULATION	RO	ROUGH OPENING
CLG	CEILING	INO	INSLATEX(ON)	S	SOUTH
CLM	CONCRETE MASONRY UNIT	INT	INTERIOR	SC	SOLID CORE
COL	COLUMN	J	JOINT	SECT	SECTION
CON	CONCRETE	L	LENGTH	BTPL	BETTER
CONP	CONCRETE	LAV	LAVATORY	SPES	SPECIFICATION(S)
CONT	CONTINUED	LEV	LEVEL	SQ	SQUARE
CONT	CONTINUED	LI	LINE ITEM	ST	STAIRS
CP	CERAMIC TILE	LS	LENGTH	STR	STRUCTURAL
CT	CERAMIC TILE	LAV	LAVATORY	SYS	SYSTEM
DEPO	DEPOULCATION	MAX	MAXIMUM	T	TREAD
DET	DETAIL	MED	MECHANICAL	TH	THICKNESS
DR	DRAINING FOUNTAIN	MET	METAL	TOP	TOP OF
DA	DAMETER	MFG	MANUFACTURE(ON)	TP	TYPICAL
DEN	DENSIFICATION	MH	MATERIAL HANDLING	UL	UNDERCUT
DIV	DIVISION	MISC	MISCELLANEOUS	UNL	UNLESS OTHERWISE NOTED
DN	DOWN	N	NORTH	VCN	VENT COMPOSITION TILE
DOS	DRAIN(S)	NA	NOT APPLICABLE	VER	VERTICAL
DRA	DRAINAGE	NR	NUMBER	VTR	VENT THRU ROOF
DRG	DRAWING	NTS	NOT TO SCALE	VVC	VENT VALVE COVERING
E	EAST	EQ	EQUAL	W	WEST
EA	EAST	EXP	ELECTRIC	W	WITHOUT
EXP	EXPANSION JOINT	EXT	ELECTRIC WATER COOLER	WPT	WORK POINT
ELEV	ELEVATION				
ELEC	ELECTRIC				
ELV	ELEVATION				
EQ	EQUAL				
EQUIP	EQUIPMENT				
EXP	EXPANSION				
EXT	EXTENDED				
EXT	EXTENDING				

1. FIRE EXTINGUISHER NOTES:

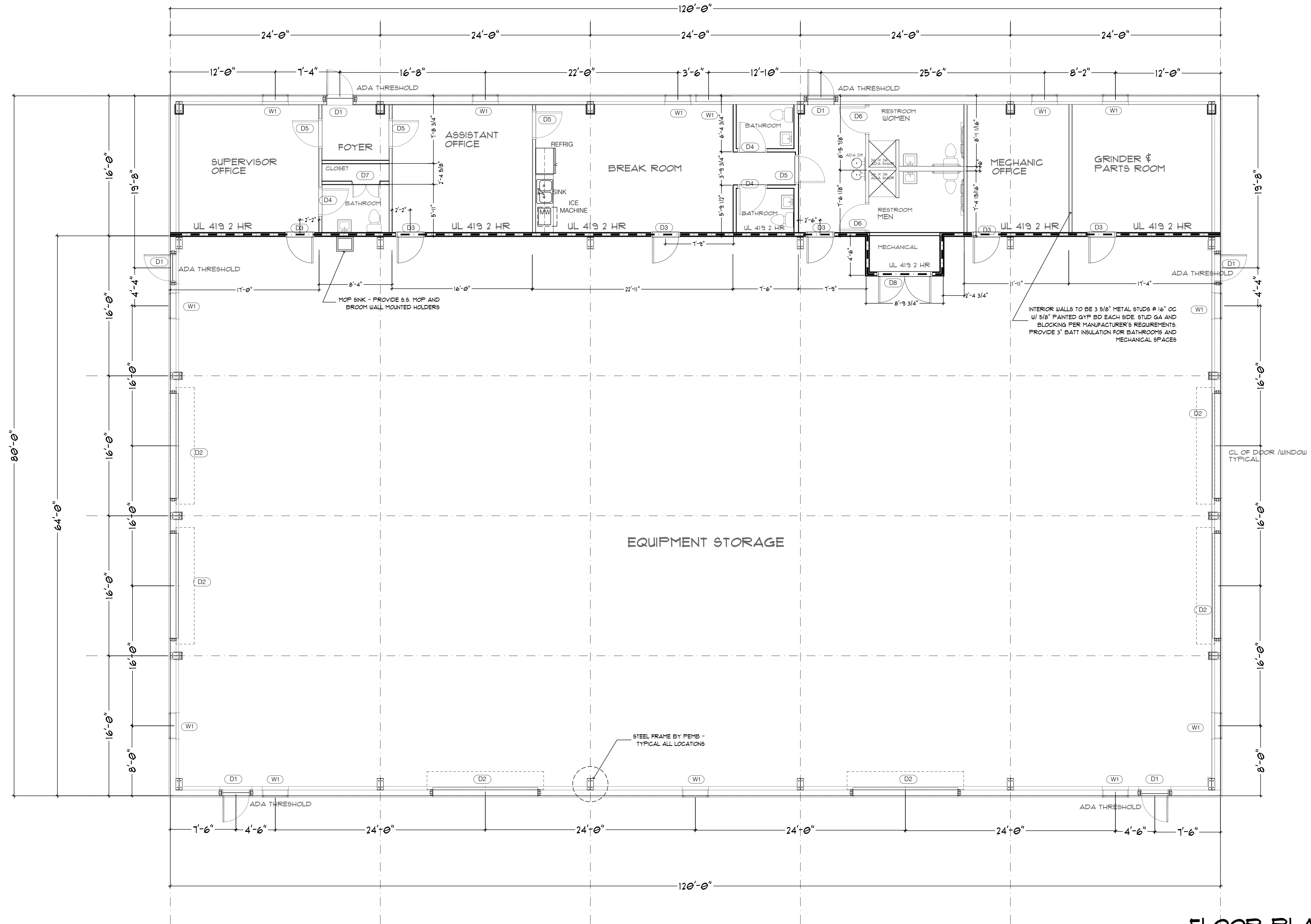
- 1.1. THE LOCATION, SIZE, AND CLASS OF FIRE EXTINGUISHERS SHALL BE DETERMINED PER NFPA REQUIREMENTS BY THE FIRE EXTINGUISHER SUPPLIER AND AS APPROVED BY THE FIRE MARSHALL / INSPECTOR.
- 1.2. THE INSTALLATION OF THE PORTABLE FIRE EXTINGUISHERS SHALL BE PER FIRE INSPECTION CODES AND IN ACCORDANCE WITH THE GENERAL CONTRACTOR.
- 1.3. SUBMIT FIRE EXTINGUISHER LAYOUT, SIZE, AND CLASS TO THE APPROPRIATE FIRE MARSHALL / INSPECTOR FOR REVIEW AND APPROVAL INDICATING THE FIRE EXTINGUISHER TAG NO., CLASSIFICATION, SIZES, PLACEMENTS AND TRAVEL DISTANCES PRIOR TO INSTALLATION.

FIRE SPRINKLER NOTE: BASED ON THE ALLOWABLE AREA FOR NON-SPRINKLERED 92 OCCUPANCY (13,500 SF ALLOWED), A FIRE SPRINKLER SYSTEM IS NOT REQUIRED. HOWEVER, THE AHJ, AUTHORITY HAVING JURISDICTION, MAY REQUIRE A FIRE SPRINKLER SYSTEM/ALARM BASED ON THE ACTUAL STORAGE MATERIALS AND EQUIPMENT THAT THE OWNER PLACES IN THE STORAGE AREA. CONTRACTOR SHALL COORDINATE FIRE SPRINKLER REQUIREMENTS W/ THE OWNER AND AHJ. IF A FIRE SPRINKLER/ALARM IS REQUIRED, IT SHALL BE DESIGNED BY OTHERS AND SHALL MEET THE REQUIREMENTS OF FBC 2020, NFPA CODES, AND THE FLORIDA FIRE PREVENTION CODE.

<p>ARCHITECT RUSSELL JOHNSON ARCHITECT P.O. BOX 1939 PANAMA CITY, FL 32401 (904) 639-4483 AF 04/25/93 RAJ.ARC@CHS.NC</p>	<p>STRUCTURAL ENGINEER APEX ENGINEERING GROUP, PLLC 18-A RICKER AVENUE SANTA ROSA BEACH, FL 32459 (904) 731-4540 WWW.APEXENGINEERINGGROUP.NET</p>
<p>MECHANICAL ENGINEER STEPHENS MECHANICAL ENG, LLC 925 TOMMY MUNRO DR SUITE B BLOOM, MS 39532 (626) 291-3322</p>	<p>ELECTRICAL ENGINEER WILHELM ELECTRICAL CONSULTANTS , PLLC 1416 CUSTOMS BLVD, SUITE 1111 GULFPORT, MS 39503 (728) 821-8800</p>

A - 100


OWNER REVIEW
05.17.23



INDICATES 2 HR WALL ASSEMBLY
UL 419 OR APPROVED EQUAL

FLOOR PLAN
SCALE: 3/16" = 1'-0"

RUSSELL JOHNSON ARCHITECT PL
ARCHITECTURE
850 630 4483
RAJARCH@MGN.COM



DATE	
DRAWN	REVIEWED
REVISIONS	
NO.	DATE
PROJECT #	

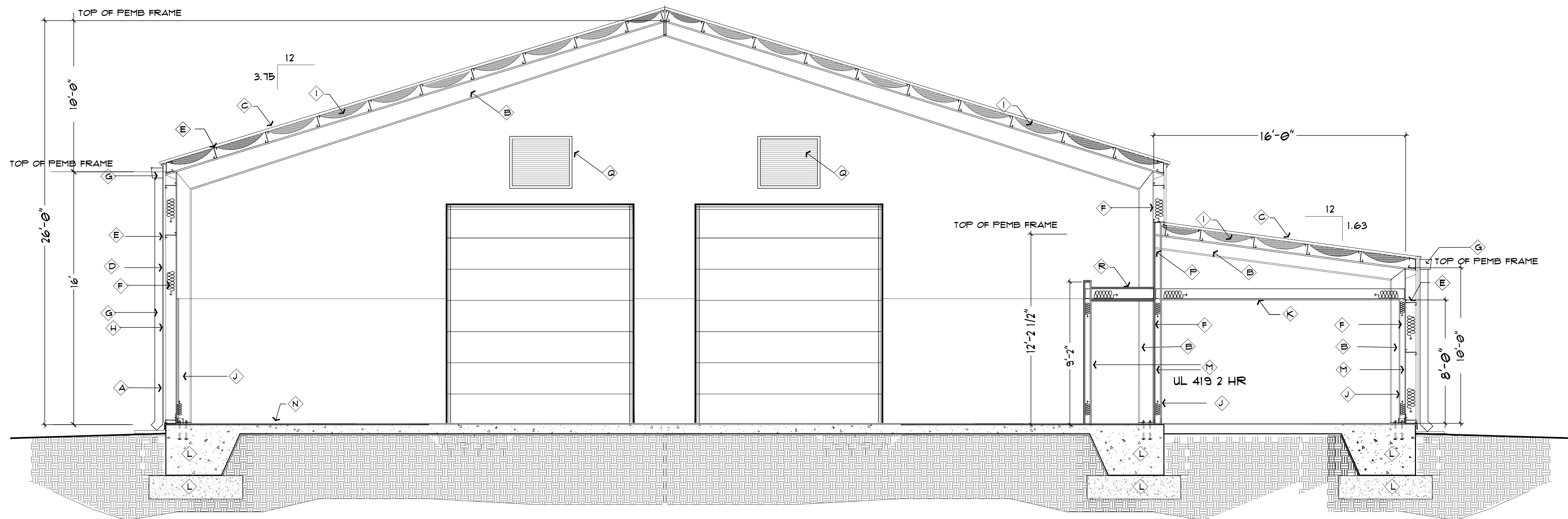
**EAGLE SPRINGS GOLF COURSE
MAINTENANCE BUILDING**
WALTON COUNTY, FLORIDA

A - 101



SCALE: $3/16" = 1'-0"$

SYMBOL	TYPE	SIZE	DESCRIPTION	REMARKS
(D1)	EXTERIOR DOOR	3-0 W, 6-8 H	PAINTED GALV STEEL, HM FRAME MINERAL FIBER INSULATION	IMPACT RATED W/ CLOSERS & ADA COMPLIANT LOCKSETS/HANDLES KEYED ON THE EXTERIOR SIDE W/ PRIVACY TURN BUTTON ON INTERIOR SIDE
(D2)	OH DOOR -- ELECTRIC	12-0 W, 14-0 H	PAINTED GALV STEEL, HM FRAME	IMPACT RATED
(D3)	PERSONEL DOOR, INTERIOR	3-0 W, 6-8 H	PAINTED METAL, HM FRAME MINERAL FIBER INSULATION	1.5 HOUR FIRE RATED UL ASSEMBLY W/ CLOSERS & ADA COMPLIANT LOCKSETS/HANDLES, SMOKE GASKET, DOOR SWEEP KEYED ON THE EXTERIOR SIDE W/ PRIVACY TURN BUTTON ON INTERIOR SIDE
(D4)	BATHROOM DOOR	3-0 W, 6-8 H	PAINTED METAL, HM FRAME	W/ CLOSERS & ADA COMPLIANT LOCKSETS/HANDLES PRIVACY PUSH BUTTONS, INSIDE PUSH BUTTON LOCKS OUTSIDE LEVER PROVIDE COAT HOOK
(D5)	OFFICE DOOR, INTERIOR	3-0 W, 6-8 H	PAINTED METAL, HM FRAME	W/ CLOSERS & ADA COMPLIANT LOCKSETS/HANDLES, SMOKE GASKET, DOOR SWEEP KEYED ON THE EXTERIOR SIDE W/ PRIVACY TURN BUTTON ON INTERIOR SIDE
(D6)	RESTROOM DOOR	3-0 W, 6-8 H	PAINTED METAL, HM FRAME	W/ CLOSERS & ADA COMPLIANT LOCKSETS/HANDLES PROVIDE COAT HOOK PRIVACY PUSH BUTTON ON INSIDE, INSIDE BUTTON LOCKS OUTSIDE LEVER. TURNING INSIDE LEVER RELEASES INSIDE BUTTON AND UNLOCKS LOCKSET.
(D7)	CLOSET DOOR	(2) 1-6 W, 6-8 H	PAINTED WOOD, WD FRAME	W/ CLOSERS & ADA COMPLIANT LOCKSETS/HANDLES
(D8)	MECH CLOSET	(2) 3-0 W, 6-8 H	PAINTED METAL, HM FRAME MINERAL FIBER INSULATION	1.5 HOUR FIRE RATED UL ASSEMBLY W/ CLOSERS & ADA COMPLIANT LOCKSETS/HANDLES, SMOKE GASKET, DOOR SWEEP KEYED ON THE EXTERIOR SIDE W/ PRIVACY TURN BUTTON ON INTERIOR SIDE



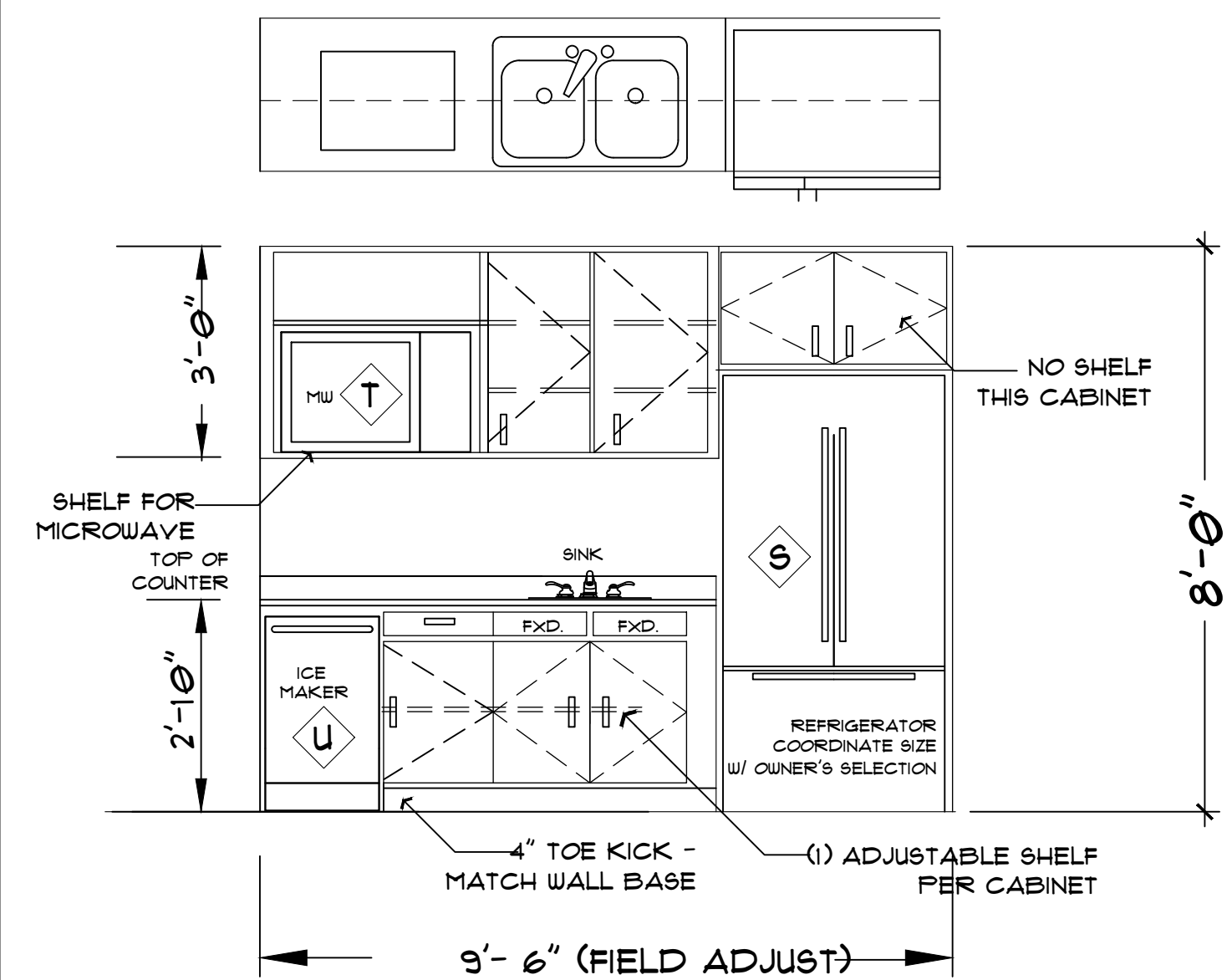
LEGEND

- A** TYPE 1, COLOR 1, PEMB METAL WALL PANELS
B STEEL PEMB FRAME
C METAL ROOF PANELS BY PEMB
D TYPE 2, COLOR 2, PEMB METAL WALL PANELS
E PEMB Z-GIRTS
F WALL INSULATION W/ VAPOR RETARDER - IN COMPLIANCE W/ FBC ENERGY CODE -
G GUTTER, DOWNSPOUT, & CONC. SPLASHBLOCK
H METAL TRIM BAND / FLASHING BY PEMB
I ROOF INSULATION W/ VAPOR RETARDER - IN COMPLIANCE W/ FBC ENERGY CODE -
J INTERIOR FINISH - COORDINATE W/ OWNER
8 FT H METAL PANELS BY PEMB IN STORAGE AREA
5/8" PAINTED GYP BOARD OTHER SPACES
4" VINYL BASE ALL SPACES - EXCEPT STORAGE AREA
VINYL FLOOR TILE ALL SPACES EXCEPT STORAGE AREA

- K** CEILING - 5/8" TYPE X PAINTED GYP BD, COORDINATE W/ OWNER
ON 6" 18 GA CEILING JOISTS @ 16" OC.
TYPICAL ALL SPACES EXCEPT MAIN STORAGE AREA
CONCRETE FOUNDATION - REFER TO STRUCTURAL
L 3-5/8" METAL STUDS (6" @ PLUMBING WALLS IF REQUIRED)
@ 16" OC W/ 5/8" TYPE X PAINTED GYP BD
METAL STUD GAUGE, BRACING, ETC SHALL BE PER SIGNED AND SEALED
SHOP DRAWINGS FROM THE METAL STUD MANUFACTURER
PROVIDE 3.5" BATT INSULATION ALL INTERIOR WALLS THAT ABUTT THE
MAIN STORAGE AREA AND ALL MECHANICAL AND BATHROOMS.
PROVIDE 2 HOUR WALL ASSEMBLY WHERE INDICATED ON PLAN
CONCRETE FLOOR SLAB - REFER TO STRUCTURAL, PROVIDE VAPOR BARRIER
N BUILDING SIGNAGE PER OWNER'S SPECIFICATIONS
O PROVIDE UL APPROVED FIRE CAULKING SYSTEM MATCHING FIRE RATING
OF WALL @ STEEL BEAM PENETRATIONS
P LOUVERS - COORDINATE W/ MECHANICAL DRAWINGS
Q PROVIDE UL APPROVED 2HR ASSEMBLY UL I 506 OR APPROVED EQUAL
(2) LAYERS 5/8" TYPE ULIX GYP BD, LOOSELY LAID ON TOP OF MIN 6" D
STEEL JOISTS @16" OC AND (3) LAYERS TYPE ULIX GYP BD ATTACHED
TO THE BOTTOM OF THE STEEL CEILING JOISTS.
R

APPLIANCE SCHEDULE:
COORDINATE W/ OWNER FOR FINAL SELECTIONS.
APPROVED EQUALS ARE ACCEPTABLE

- S** GE 27.8 cu ft FRENCH DOOR REFRIGERATOR w/ Ice Maker
Stainless Steel
Model #PFE28KYNFS
T GE Profile 2.2 cu. ft. Countertop Sensor MICROWAVE OVEN
Stainless Steel
Model # PES7227SLSS
U EDGE STAR IB250SS 15" wide 20 lb Built-In ICE MAKER
Stainless Steel
Model # IB250SS

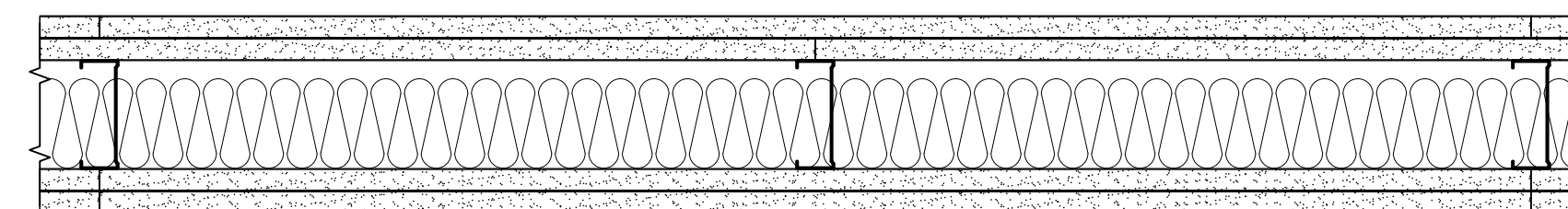


BREAK ROOM CABINET ELEVATIONS

SCALE: NTS

NOTE:

- COORDINATE CABINET DESIGN WITH OWNER - SUBMIT SHOP DRAWINGS FOR OWNER APPROVALS PRIOR TO PURCHASE / CONSTRUCTION OF CABINETS
- CABINETS TO BE PLASTIC LAMINATE OVER 3/4" PLYWOOD.
- HARDWARE TO BE STAINLESS STEEL, COMMERCIAL GRADE



DEMISING WALL - U419 OR APPROVED EQUAL

- 3 5/8" METAL STUDS - @ 16" OC - GAUGE AND BLOCKING PER MANUFACTURER'S REQUIREMENTS - 25 GA MIN.
- (2) LAYERS OF 5/8" SHEETROCK FIRECODE CORE PANELS EACH SIDE OF WALL - PROVIDE R19 INSULATION.
- PROVIDE UL APPROVED FIRE RATED ASSEMBLY AT ALL VOIDS & PENETRATIONS

BUILDING SECTION
NTS

EAGLE SPRINGS GOLF COURSE
MAINTENANCE BUILDING
WALTON COUNTY, FLORIDA



RUSSELL JOHNSON ARCHITECT PL
ARCHITECTURE
850 630 4483
AR 00012593
RAJARCH@MSN.COM

DATE	
DRAWN	REVIEWED
REVISIONS	
NO. DATE	
PROJECT #	

NOTE: Specified products listed are for design intent/quality control, approved equals are accepted as approved by owner. Submit complete shop drawings and specs for owner review and approval.

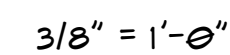
GB; Bobrick B-6806.99 series peened satin stainless steel finished grab bars for accessible toilet
size 42" L side wall, 36" L back wall

PTC; Bobrick B-262 classic series satin stainless steel finished surface mounted paper towel cabinet for folded paper.

TPH; Bobrick B-6867 classic series surface mounted satin stainless steel finish two roll toilet paper holder.

ADA COMPLIANT WATER CLOSET -

Bobrick B 2260 satin stainless steel floor standing waste receptacle



NOTES:

1. COORDINATE TOILET ACCESSORIES WITH OWNER. SUBMIT FULL SHOP DRAWINGS / CUT SHEETS FOR OWNER APPROVAL DURING BIDDING.
2. COORDINATE MOUNTING HEIGHTS OF ACCESSORIES WITH MANUFACTURER'S DATA FOR ADA COMPLIANCE.

